

Theodore Roosevelt Island

Cultural Landscape Report/ Environmental Assessment



What is a Cultural Landscape Report?

- **Reference document** guiding immediate and long-term treatment of cultural landscape.
- **Establishes preservation goals** based on:
 - Research
 - Inventory
 - Documentation
 - Analysis and Evaluation
- Clearly **identifies landscape characteristics** and features that make the cultural landscape historically significant, according to the National Register of Historic Places.
- Outlines the **history** and periods of **historical significance** of the site.
- Recommends treatment **guidelines** and **actions**



Naturalist and Tour Group, 1955 (Brochure, TR Center).

Project Area



Theodore Roosevelt Island

Cultural Landscape Report/ Environmental Assessment

National Park Service
U.S. Department of the Interior



Public Meeting
April 19, 2018

Park Management Philosophy

Preserve and maintain Theodore Roosevelt Island's natural environment and historic features while providing public access, education, interpretation, and other low impact uses that are compatible with the cultural landscape and natural surroundings.



TRI Explorations, 1955 (National Park Service).

Project Purpose & Need

- **Provide guidance for preserving** the cultural landscape.
- **Identify and document** landscape characteristics, patterns, and features that convey historical significance.
- **Recommend a treatment approach** from the *Secretary of the Interior's Standards for the Treatment of Historic Properties* (SOI Standards) to guide long-term stewardship.
- **Provide a framework** for NPS to appropriately **apply preservation measures** when planning updates at the site.
- Ensure the improvement planning process properly **considers the significance of the cultural landscape** and historical features of these sites so that the historical context may be preserved.
- **Promote a better visitor experience.**
- **Preserve** the park's historically significant features.
- **Improve and modernize** certain visitor amenities, access areas, and conditions.

Theodore Roosevelt Island

Cultural Landscape Report/ Environmental Assessment

Historic Periods of Significance

American Indian Period (to 1717)

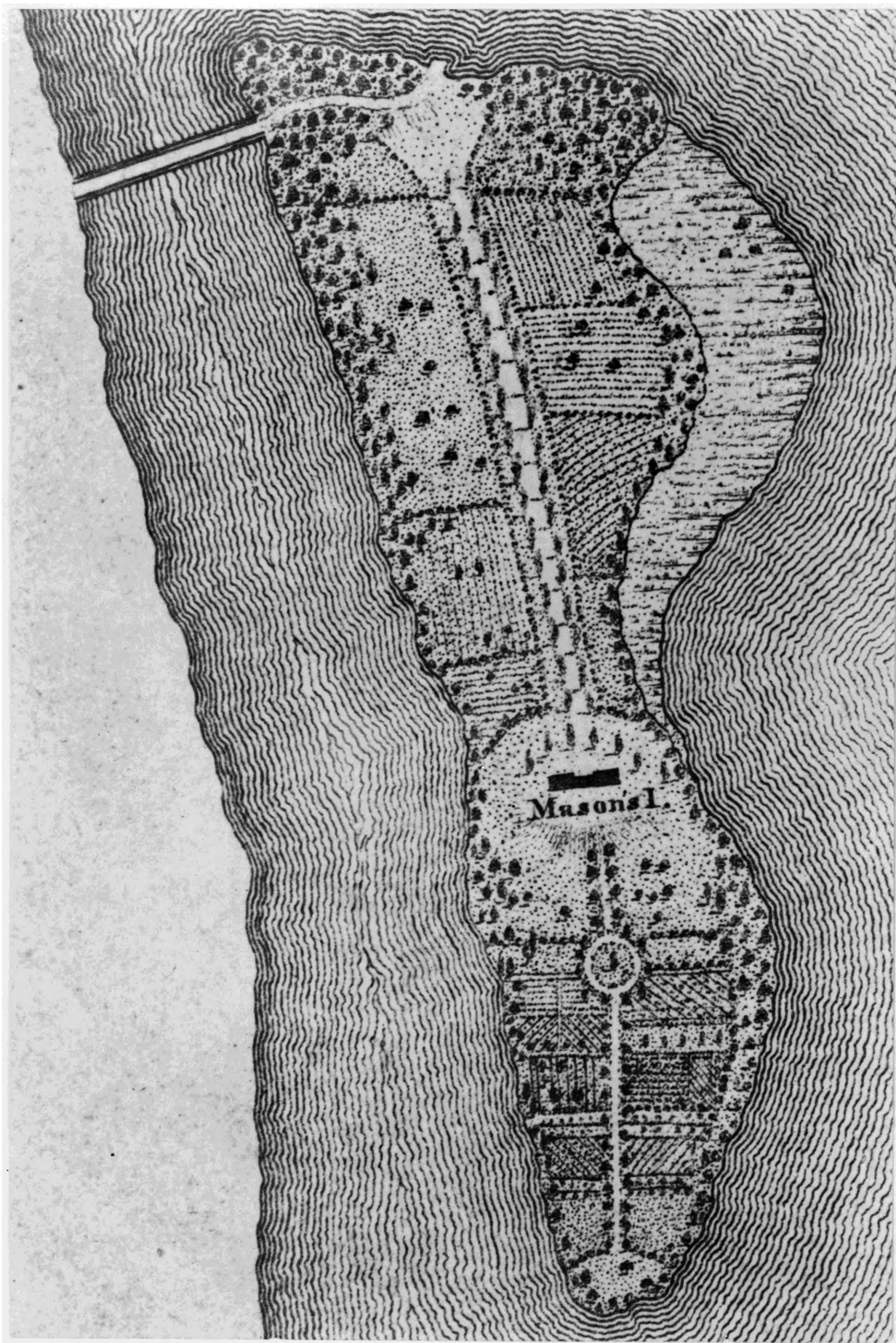


Capt. John Smith's Map of Virginia in 1612 (1624, Library of Congress).



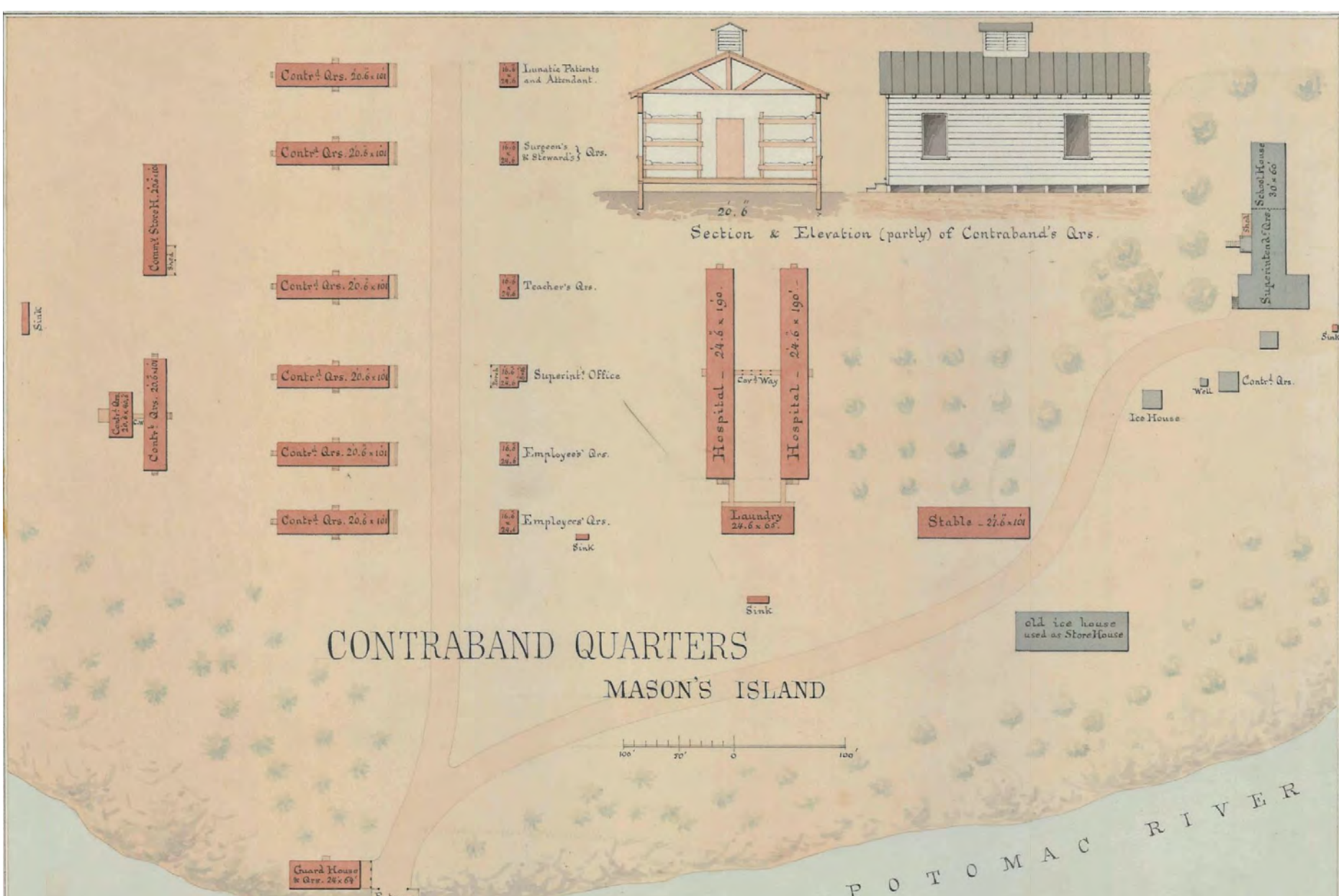
"Early Indian Life on Analostan Island," Auriel Bessemer, 1940.

Mason Family Ownership (1717-1833)

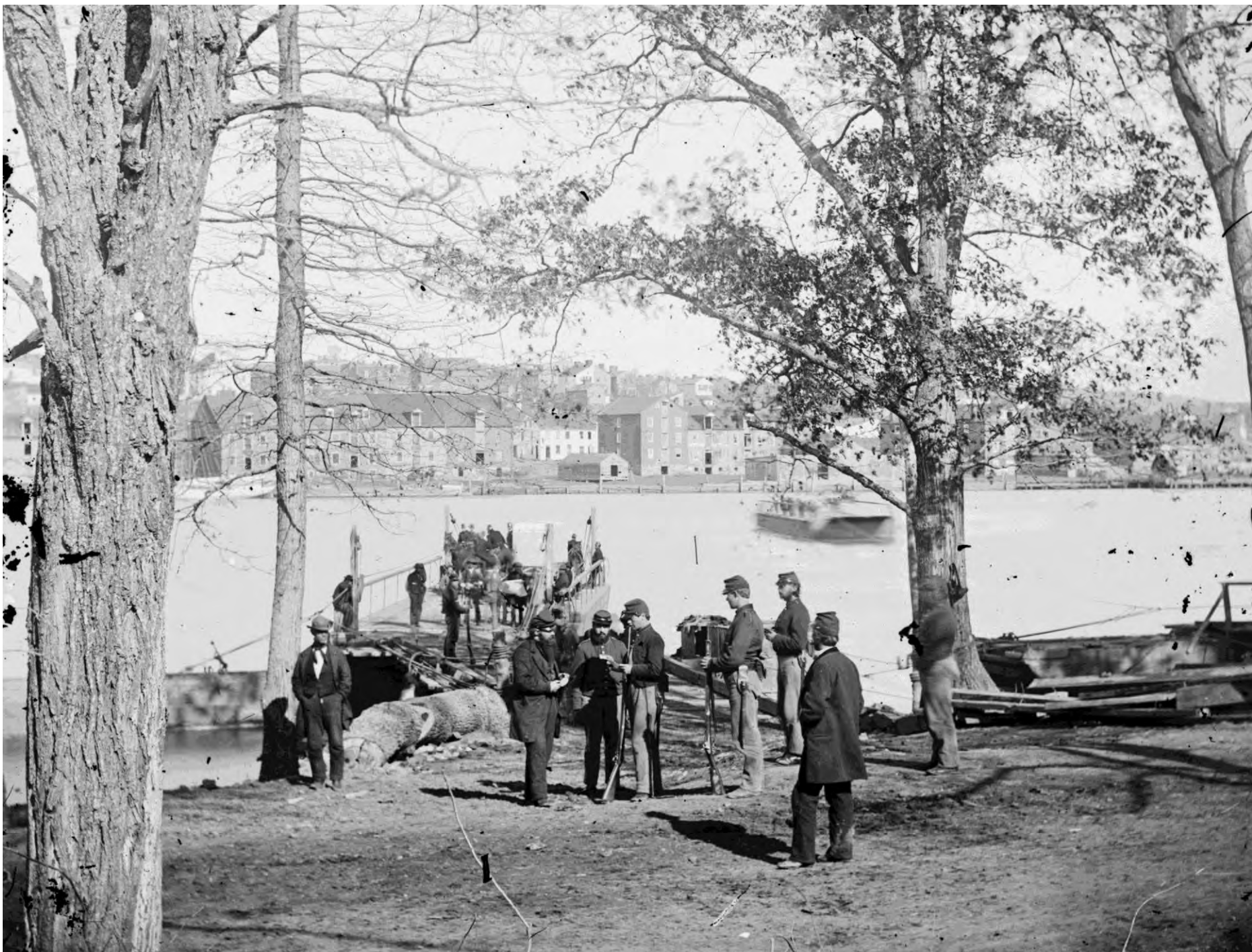


Robert King Map of Washington, 1818 (Library of Congress).

Civil War (1861-1865)



ca. 1863 (Library of Congress).



Soldiers at Ferry Landing, Matthew Brady, 1860-1865 (Library of Congress).

Theodore Roosevelt Island

Cultural Landscape Report/ Environmental Assessment

National Park Service
U.S. Department of the Interior

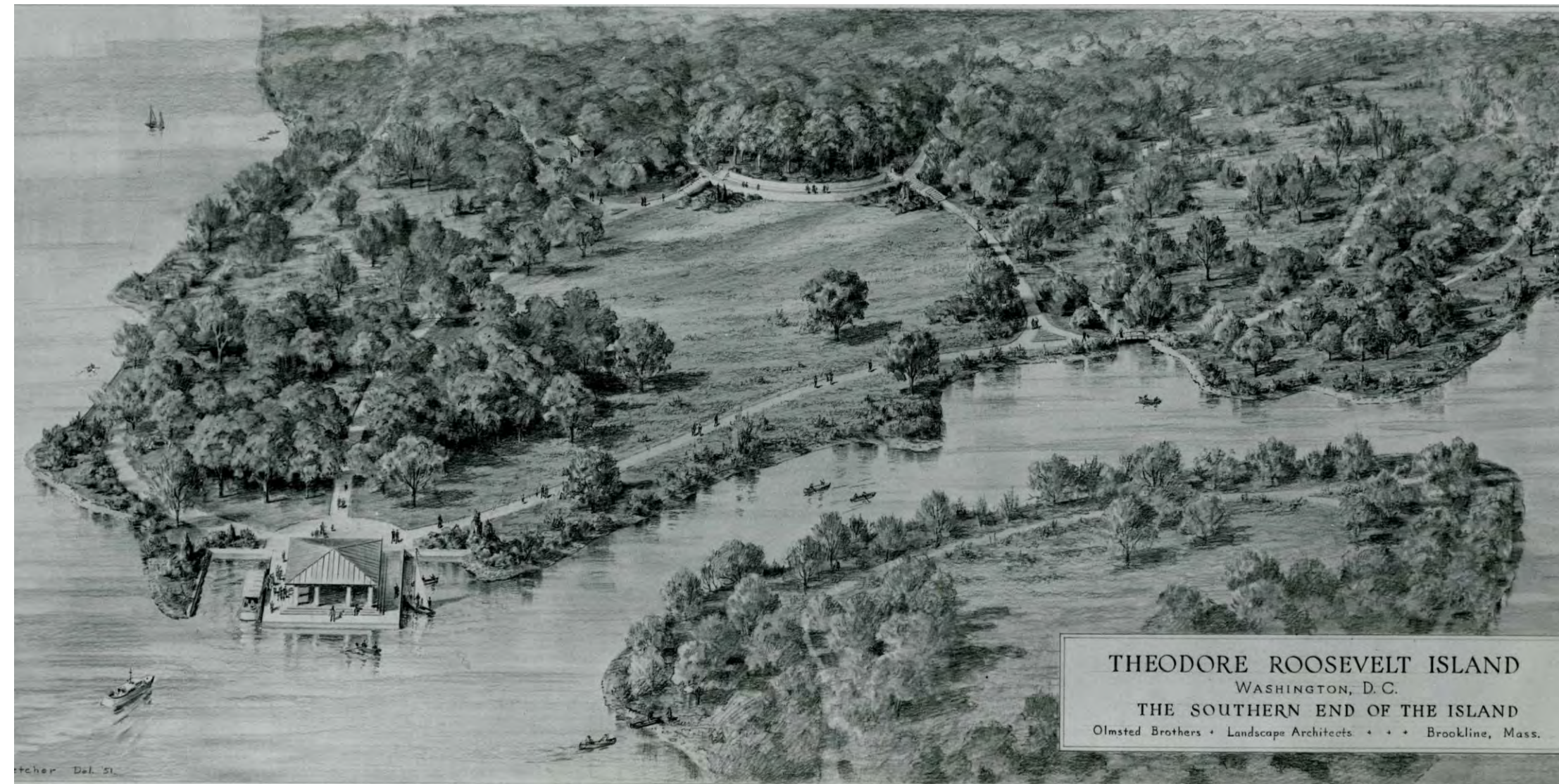


Public Meeting
April 19, 2018

Historic Periods of Significance

Presidential Memorial (1931-1979)

*Olmsted Bros. and Civilian Conservation Corps
(1931-1947)*



Sketch of southern end of island, Olmsted Bros. (Olmsted NHS Archive).

*Memorial Plaza
(1961-1979)*



Plaza under construction, 1965 (Library of Congress).



CCC workers at TR Island, ca. 1935 (NPS).



Sketch of plaza, 1961 (NPS).

- Memorial to Theodore Roosevelt, 26th president of the U.S.
- **1931:** Purchased by Roosevelt Memorial Association and gifted to federal government for use as memorial.
- **1934-1937:** Olmsted Brothers created the plan and restored natural woodland to the island as a living memorial to Roosevelt, known as the "Great Conservationist."
- **ca. 1936:** Opened to public
- **1958:** Dedication
- **1967:** Memorial Plaza, designed by Paul Manship and Eric Gugler, constructed.

Theodore Roosevelt Island

Cultural Landscape Report/ Environmental Assessment



Cultural Landscape Characteristics

Archeology



Archeological resources include remains of past human life and activities on the island.

Buildings & Structures



Buildings and structures include the Memorial Plaza, the Comfort Station, the pedestrian bridge, and the ruins of the Mason mansion and icehouse.

Views & Vistas



There are historic views across the river to Georgetown and Virginia.

Natural Systems & Features



Natural systems and features include the Potomac River, the marsh and swamp, deciduous forest, and the Atlantic Seaboard fall line.

Circulation



Circulation elements include the bridges, island trail system, Virginia trails, and water access.

Small Scale Features



Small scale features on the island include elements such as benches, signs, markers, and water fountains.

Theodore Roosevelt Island

Cultural Landscape Report/ Environmental Assessment

Cultural Landscape Characteristics



Spatial Organization & Land Use

Built memorial features among natural forests and wetlands connected by a path system were designed to provide visitors a presidential memorial experience in nature that honors President Theodore Roosevelt's conservation legacy.

Vegetation

TR Island's vegetation cover has changed over time; and its 11 different native plant communities and the Memorial Plaza's designed ornamental landscape fulfill Olmsted's vision for TR Island as a presidential memorial.





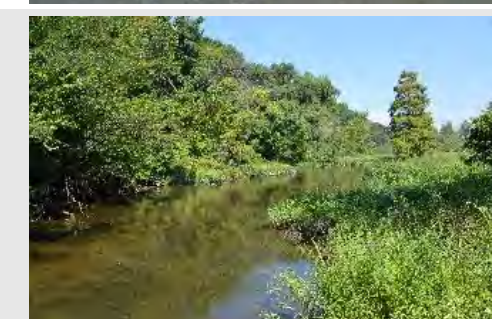







Theodore Roosevelt Island

Cultural Landscape Report/ Environmental Assessment

Treatment Recommendations

Secretary of the Interior’s Standards for the Treatment of Historic Properties (SOI Standards)

- **PRESERVATION:** sustain the existing form, integrity, and materials of an historic property; maintain and repair
- **REHABILITATION:** make a compatible use possible while preserving features that convey historical or cultural value
- **RESTORATION:** depict the property as it appeared at a particular period of time
- **RECONSTRUCTION:** reconstruct non-surviving features to replicate the appearance of a site at a particular period of time

Image	Landscape Characteristic	Treatment Summary
	Archeology	Conserve, protect, and manage.
	Natural Systems	Protect or enhance Potomac River, river edge, and diverse island ecosystems.
	Vegetation	Protect and enhance the 11 diverse island vegetation zones; rehabilitate memorial landscape.
	Spatial Organization & Land Use	Preserve special relationships of natural areas to built areas. Maintain TRI as presidential memorial for public education & interpretation.
	Circulation	Preserve or enhance land trails, make portions ABA compliant; rehabilitate Bridge 31 of MVT; install soft shoreline landing(s) for small non-motorized watercraft.
	Buildings & Structures	Restore full-circle memorial experience. Address Historic Comfort Station.
	Constructed Water Features	Repair and maintain pools and fountains at plaza.
	Views & Vistas	Undertake select view and vista clearing to improve views; reinstate natural southern viewpoint.
	Topography	Preserve or enhance.
	Small Scale Features	Protect and preserve; introduce compatible benches and trail signage.

Theodore Roosevelt Island

Cultural Landscape Report/ Environmental Assessment



Treatment Recommendations Overview



Treatment Recommendations Overview

Legend

- Topographic Contours
- Fence
- Regional Trail Network
- Large Soft Non-Motorized Watercraft Landing
- Small Soft Non-Motorized Watercraft Landing
- Former Mason Estate
- Study Area
- Political Boundaries
- Wall or Contributing Feature
- Contributing Feature
 - 1. Comfort Station
 - 2. Remnants of Causeway
 - 3. Possible Wharf Ruins
 - 4. Possible Wharf Ruins
 - 5. Possible Wharf Ruins
 - 6. Ferry/Wharf Remnants
 - 7. Ferry Signs (2)
 - 8. Ferry/Wharf Remnants
 - 9. Ferry Signs (2)
 - 10. Shipwreck
 - 11. Ferry/Wharf Remnants
 - 12. Ferry/Wharf Remnants
- Easily Adaptable for Universal Access
- Redesign for Universal Access
- Regional Trail Network
- NPS Trails
- New 2nd Tier Trails
- Decommission Social Trails
- FD Floating Dock
- Bridge 31
- Riverine, R1USQ
- Deciduous Forest, Basic Mesic Hardwood Forest (Costal Plain/Piedmont Type)
- Deciduous Forest, Successional Mixed Deciduous Forest
- Emergent Herbaceous Wetlands, Freshwater Tidal Mixed High Marsh
- Shrub/Scrub, Successional Vine-Shrubland
- Woody Wetlands, Freshwater Tidal Swamp
- Woody Wetlands, Maple-Ash Swamp Forest
- Woody Wetlands, Silver Maple Floodplain Forest
- Woody Wetlands, Successional Box-elder Floodplain Forest
- Woody Wetlands, Terrace Hardwood Floodplain Forest
- Viewpoint
 - Create shoreline access with viewpoints and non-motorized boat landings at key historic landing or viewpoint locations.
- Add Wayfinding
 - Add wayfinding signage and interpretive amenities.
- Parking

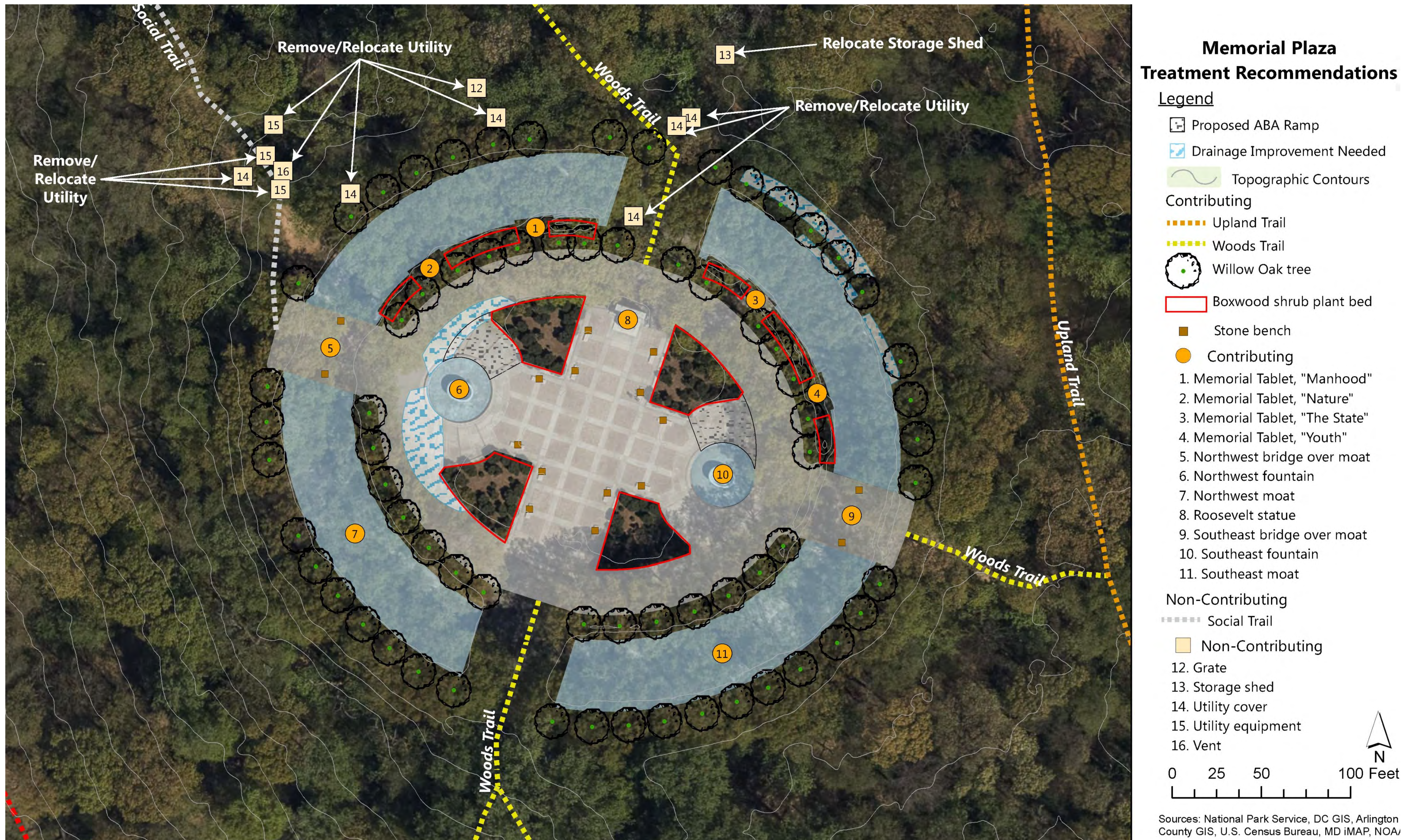
0 250 500 1,000 Feet

Sources: National Park Service, DC GIS, Arlington County GIS, U.S. Census Bureau, NOAA, Esri

Theodore Roosevelt Island

Cultural Landscape Report/ Environmental Assessment

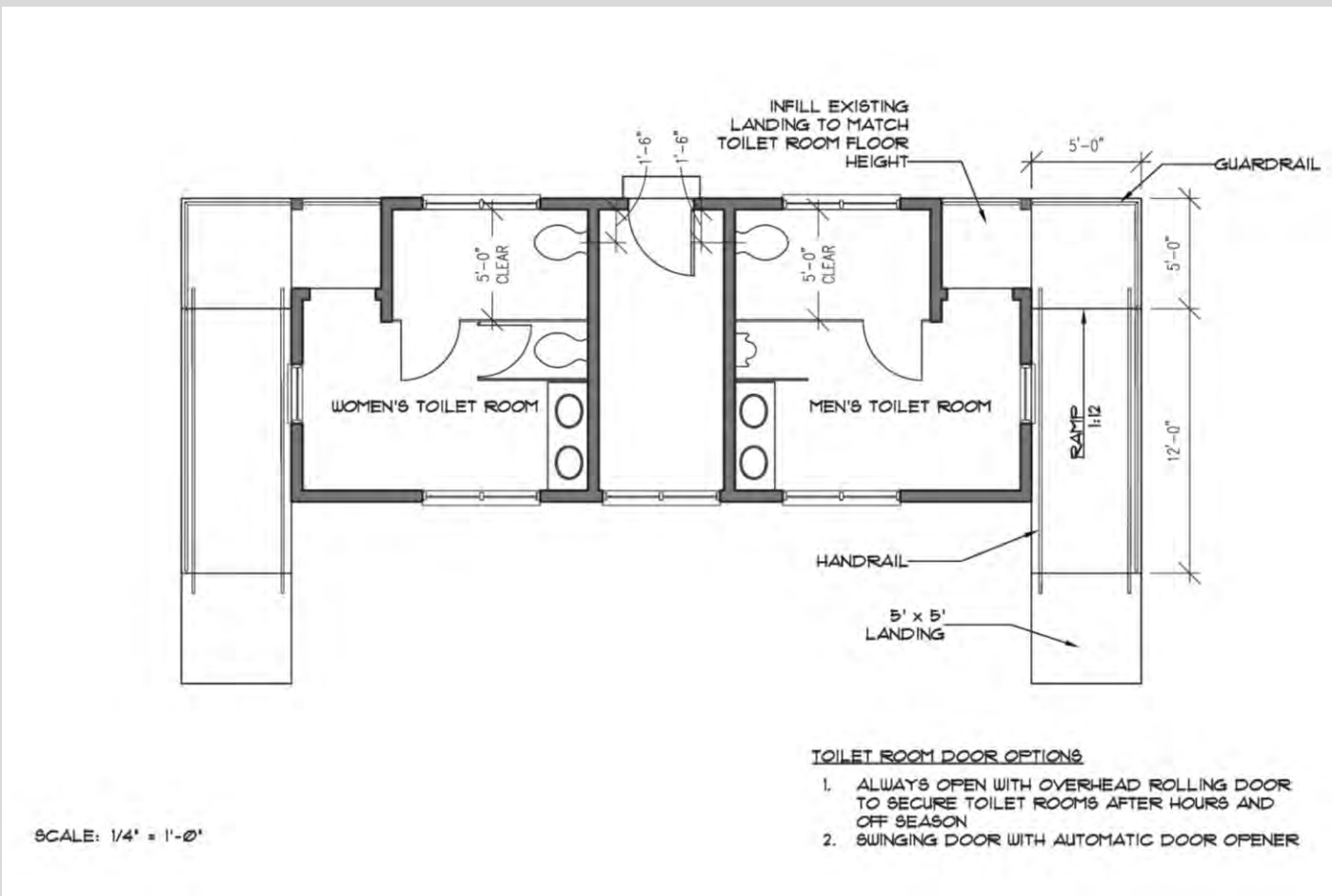
Memorial Plaza Plan



Theodore Roosevelt Island

Cultural Landscape Report/ Environmental Assessment

Environmental Assessment Alternatives



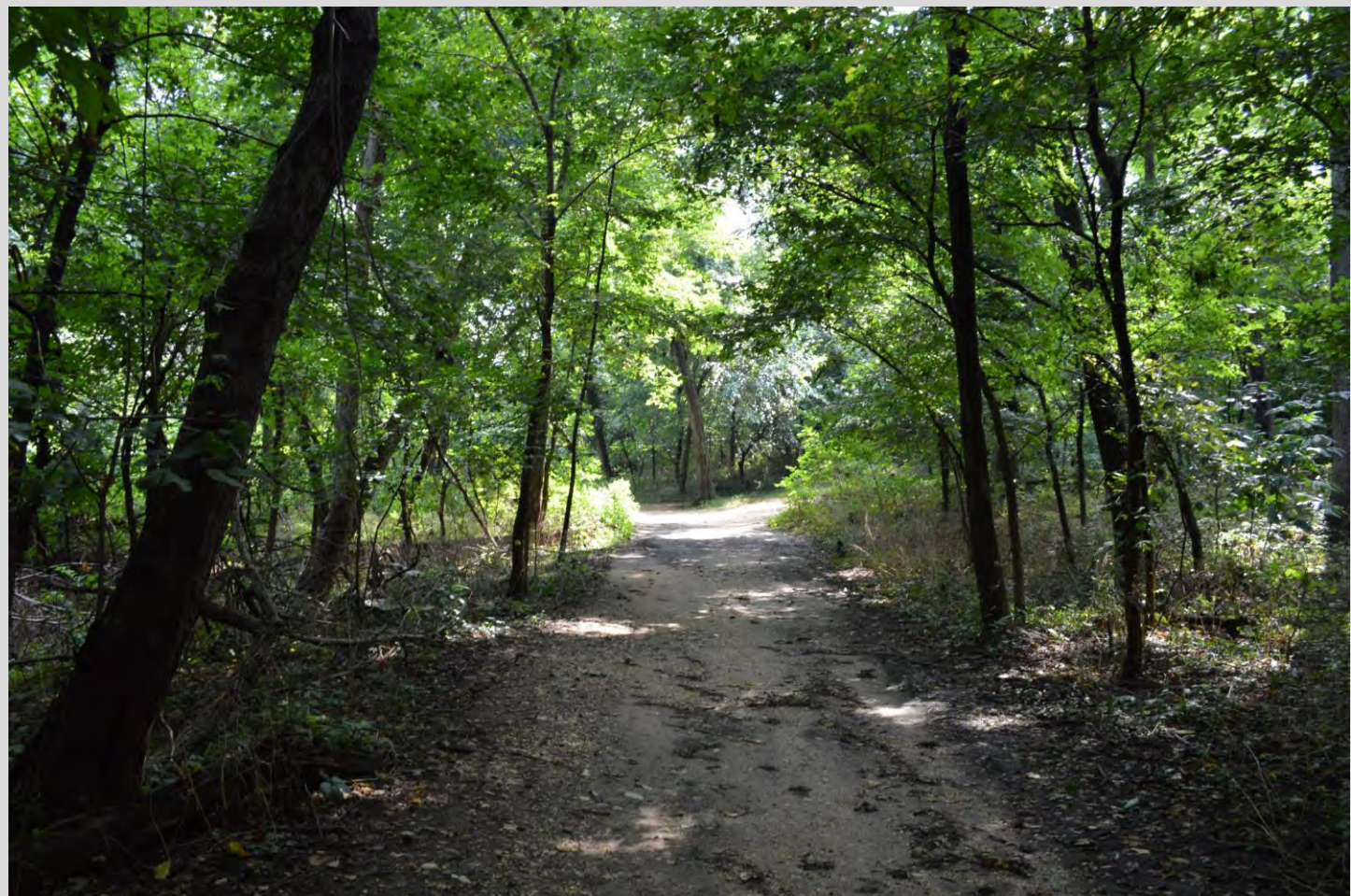
Historic Comfort Station

1. No Action: maintain in existing, partially-functional condition.
2. PREFERRED: Rehabilitate as fully functional, universally accessible, year-round facility.
3. Rehabilitate for adaptive reuse and build new restroom facility elsewhere.
4. Rehabilitate as fully functional, universally accessible, year-round facility and build additional new facility elsewhere



Water Circulation

1. No Action: maintain existing condition of no formal water access or landings on island.
2. Establish Soft Landings for Non-Motorized Watercraft
3. PREFERRED: Establish Soft Landings for Non-Motorized Watercraft and a Floating Dock.



Land Circulation – On Island Trails

1. No Action: maintain trails in existing condition.
2. Social Trail Decommissioning and Vegetation Restoration
3. PREFERRED: Trail Improvements and Viewpoint/Wayfinding Creation



Land Circulation – Off Island Trails

1. No Action: maintain trails in existing condition
2. Rehabilitate Bridge 31 at Mount Vernon Trail
 - a. Option 1: Realignment with One New Pile
 - b. Option 2: Realignment with Three New Piles
 - c. Option 3: Realignment with Five New Piles
 - d. PREFERRED: Option 4: Realignment with Three New Piles and larger left turn lane

Theodore Roosevelt Island

Cultural Landscape Report/ Environmental Assessment



Environmental Assessment Preferred Alternatives



Theodore Roosevelt Island

Cultural Landscape Report/ Environmental Assessment

National Park Service
U.S. Department of the Interior



Public Meeting
April 19, 2018

Public Comments

Tell us what you think!

Submit comments during the **Public Scoping Period:**

Comments requested no later than May 3, 2018.

Three Ways:

- Right here!
- Online: https://parkplanning.nps.gov/tri_clr_ea
- By Mail: Superintendent
George Washington Memorial Parkway
Attn: Theodore Roosevelt Island CLR/EA
Turkey Run Headquarters
700 George Washington Memorial Parkway
McLean, VA 22101