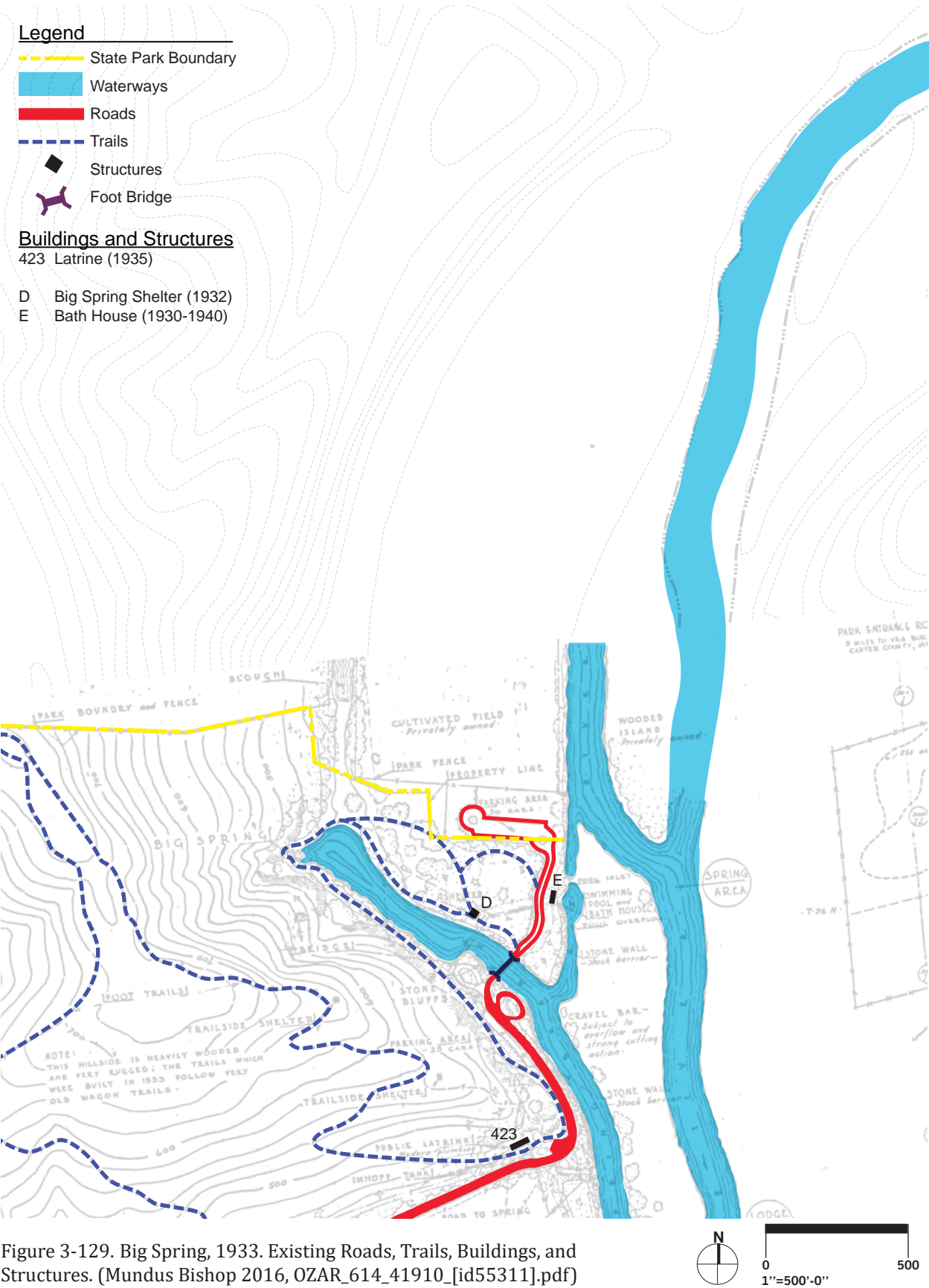
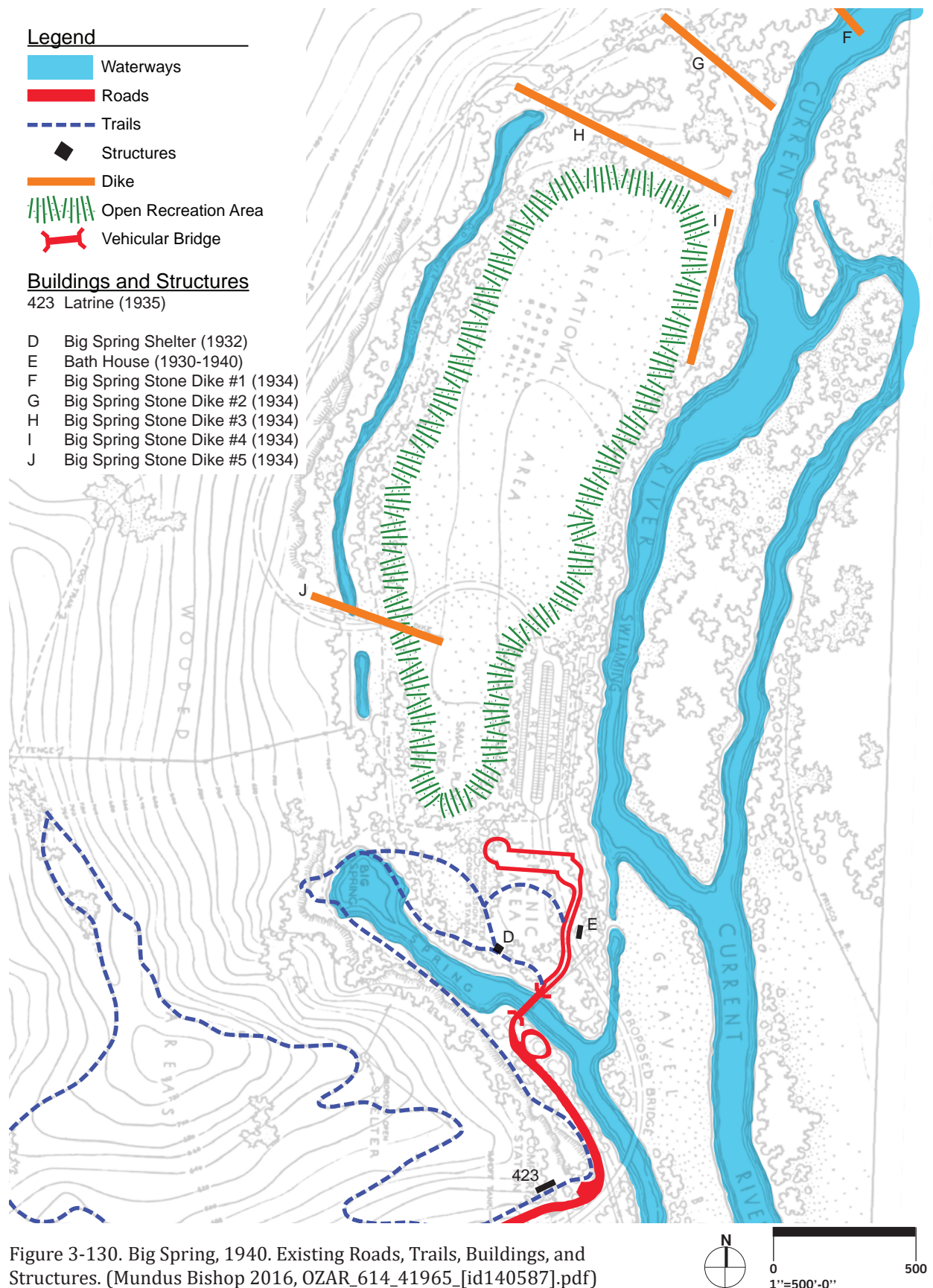
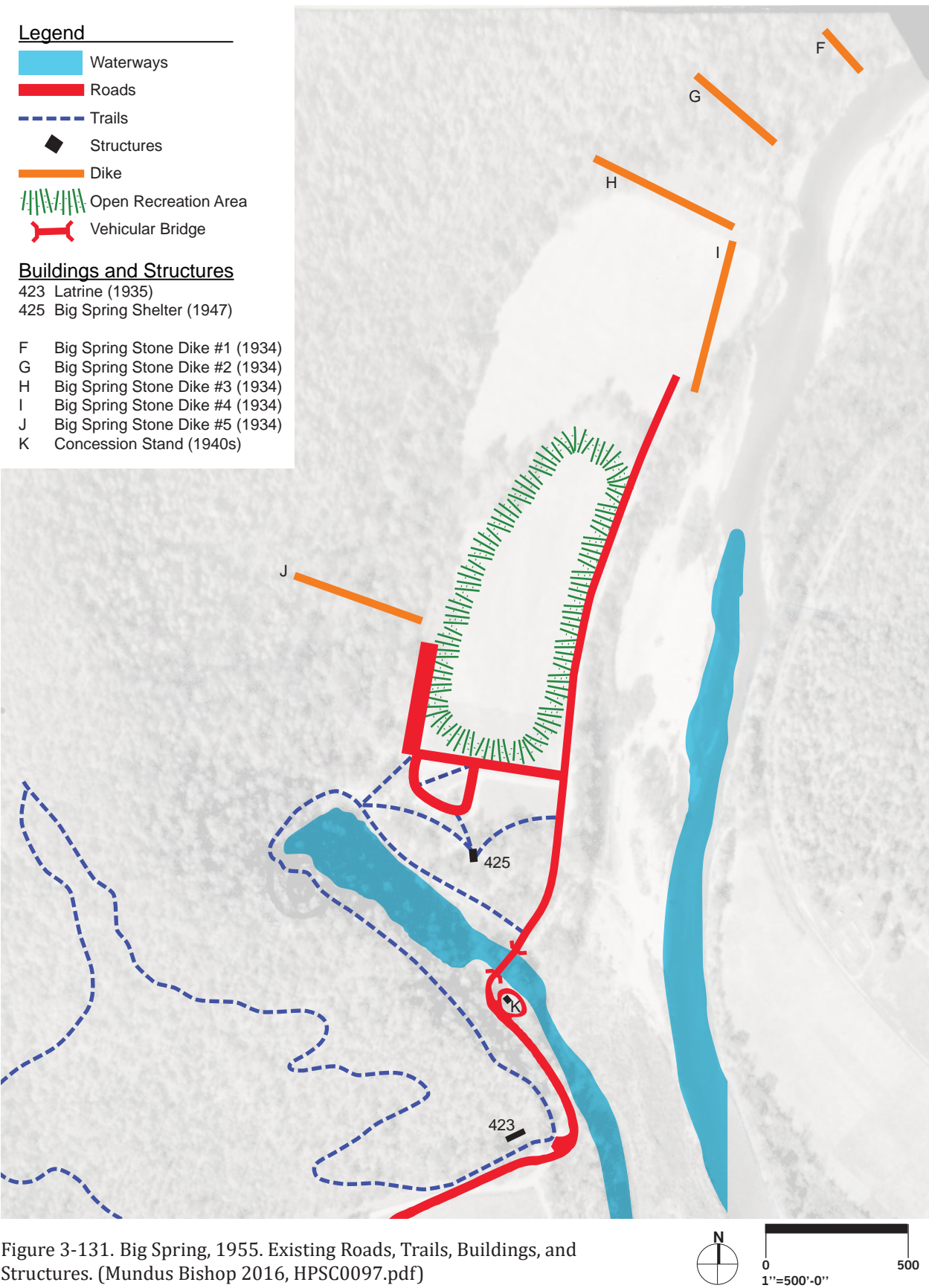


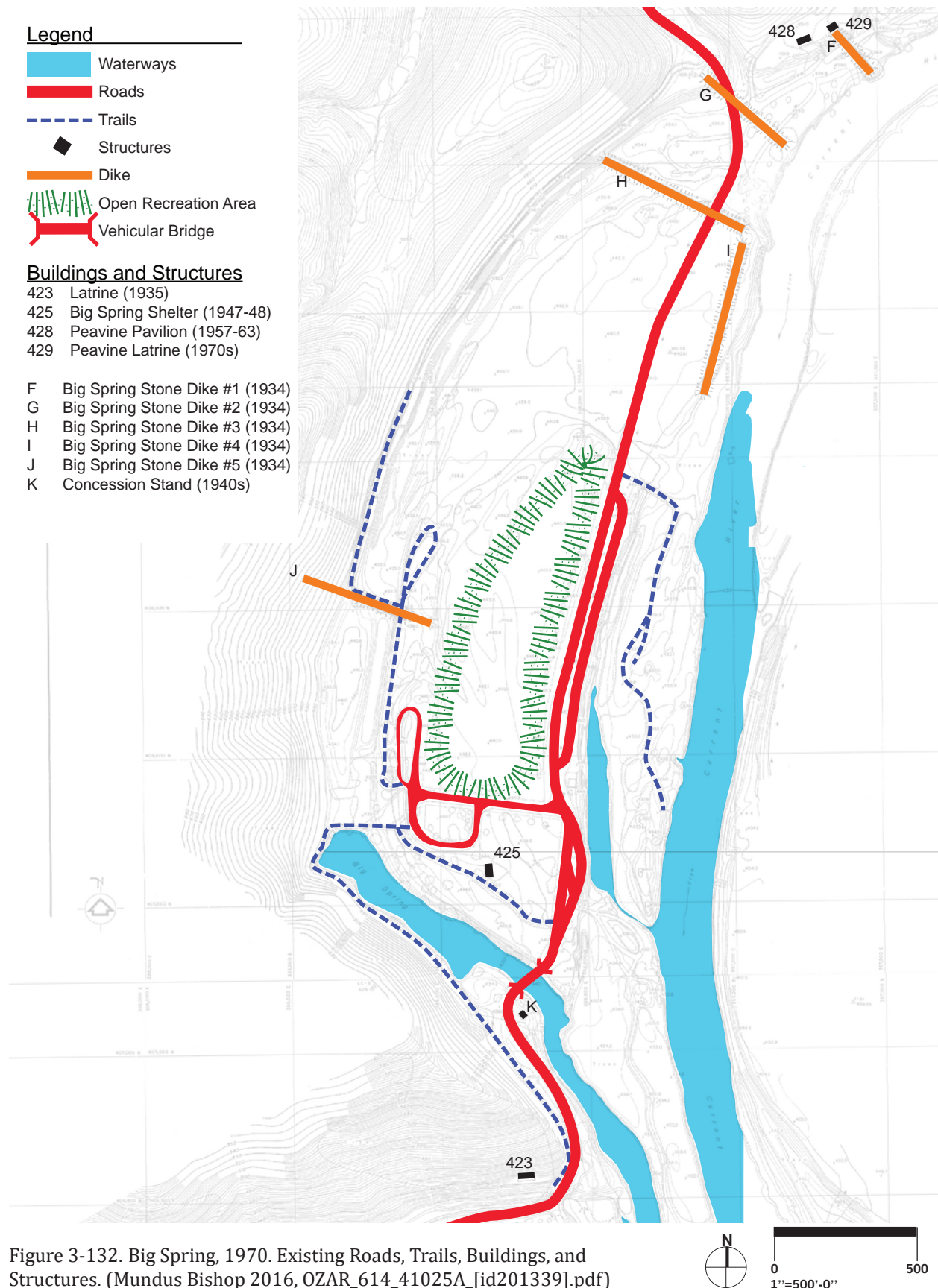
Figure 3-128. Big Spring, 1927. Existing Roads, Trails, Buildings, and Structures. (Mundus Bishop 2016, HPSC0108.pdf)











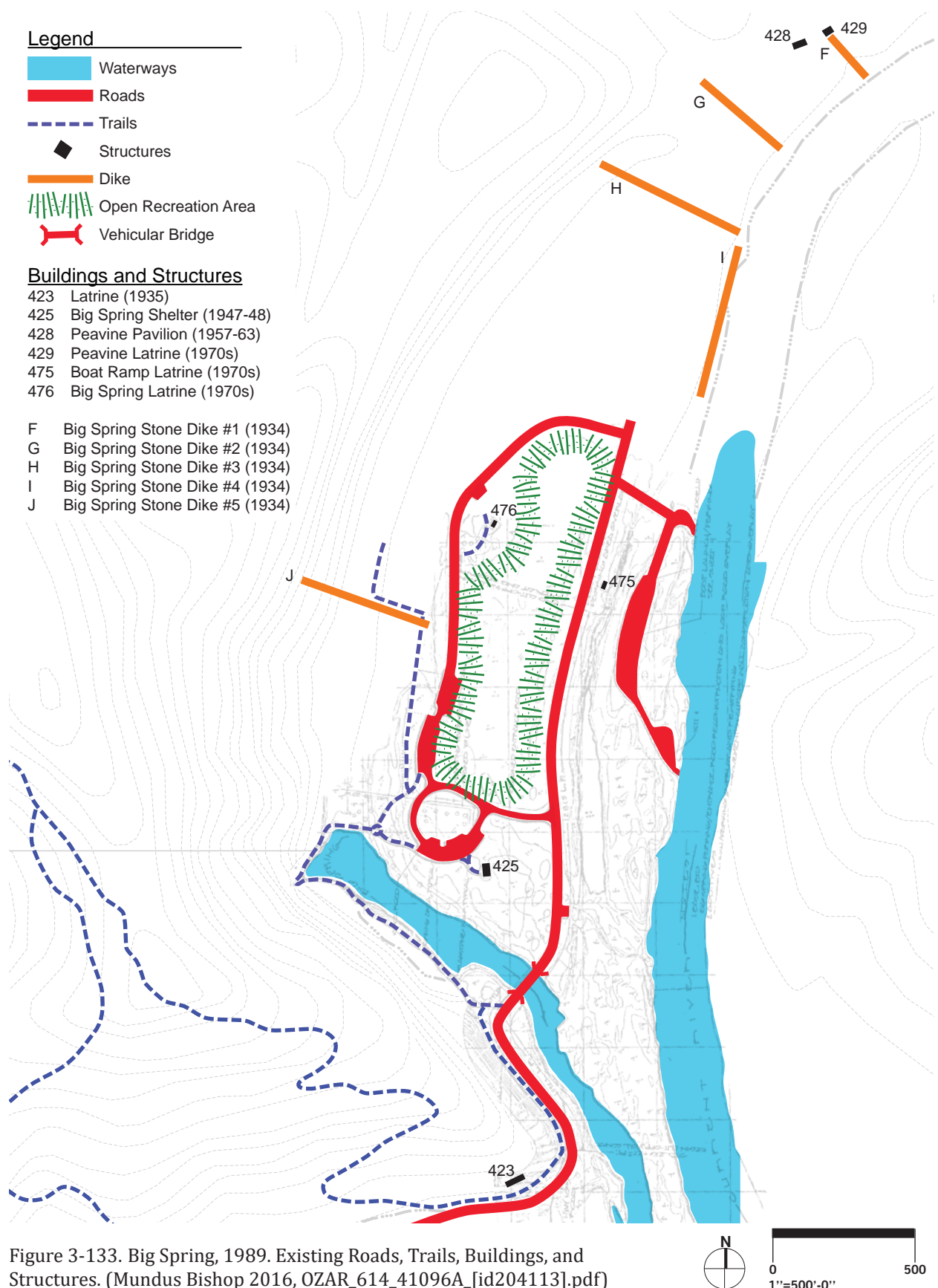






Figure 3-134. Big Spring Branch Vehicular Bridge, note diagonal struts, Circa 1940. (OZAR Archives)



Figure 3-135. Big Spring Branch Vehicular Bridge. (Mundus Bishop 2015)





Figure 3-136. The trail to the spring was originally an unimproved dirt path. Stone abutments can be seen at the edge of the water, at right. Date unknown. (OZAR Archives)



Figure 3-137. The trail to the spring from the parking area has been modified since the period of significance with new stone surfacing and retaining walls. (Mundus Bishop 2016)





Figure 3-138. The CCC built a trail at the edge of the bluff, stabilized by native cut stone. Date unknown. (OZAR Archives)

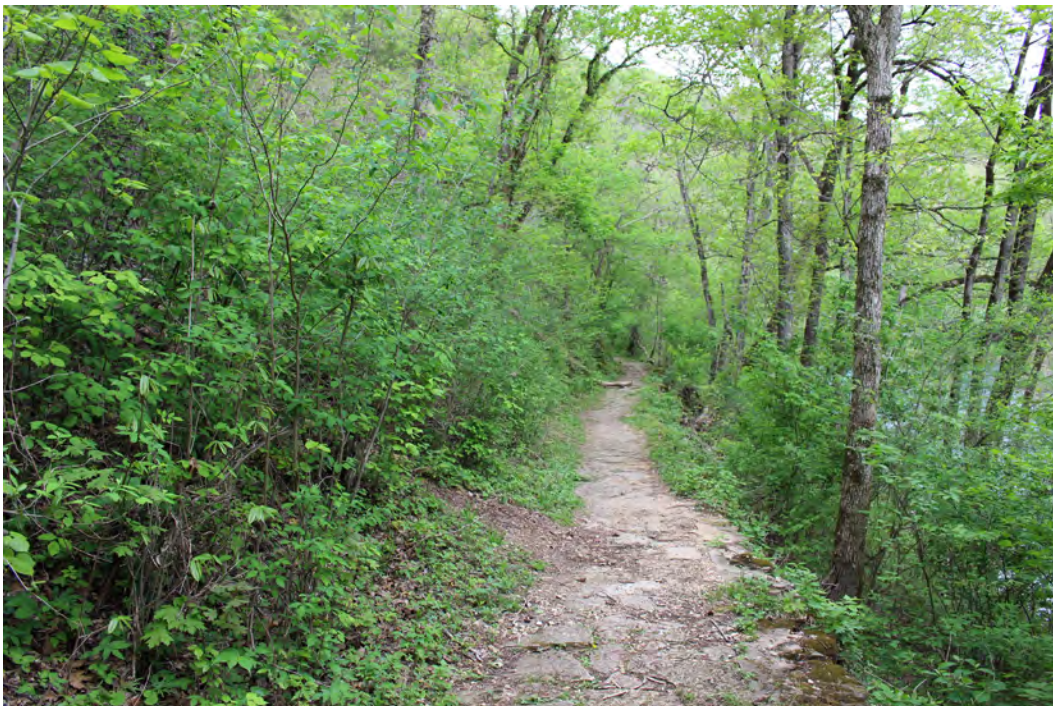


Figure 3-139. The CCC-designed trail remains in its original alignment, however their stone work is difficult to discern. (Mundus Bishop 2016)





Figure 3-140. Trail at the spring, date unknown. (OZAR Archives)



Figure 3-141. The trail at the spring has been washed out in places, and is in fair condition. (Mundus Bishop 2016)