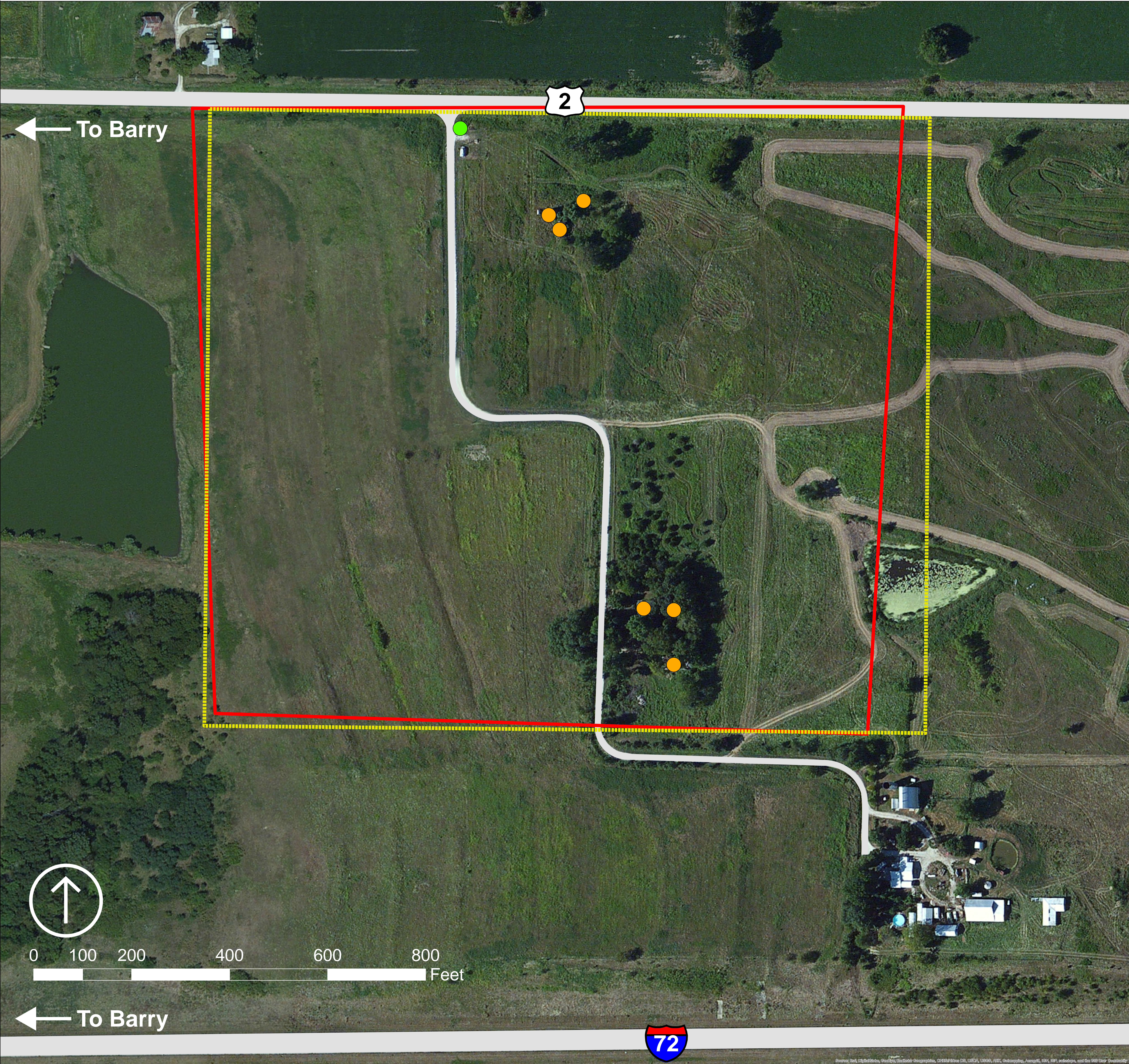




New Philadelphia Townsite with Existing Conditions



- Non-Contributing Structures
- Interpretive Kiosk (Modern)
- Area Roads
- New Philadelphia Townsite boundary based on UTM coordinates in NHL nomination
- New Philadelphia Townsite boundary based on georectified 1836 lots (approximate)

Produced By:
Midwest Region
Geospatial Support Center

Coordinate System:
NAD 1983 2011 StatePlane Illinois
West FIPS 1202 Ft US

The NPS makes no warranty, express or implied, related to the accuracy or content of this map.