



December 13, 2016



About the Project

The goal of the Buzzard Point Park project is to improve access to the river and reclaim the waterfront for city residents and visitors.

Buzzard Point Park is a roughly 3.5 acre waterfront park uniquely situated along the north bank of Anacostia River just east of the confluence with the Potomac River. Once an isolated area, the park is now primed to serve a neighborhood undergoing a major transformation. In March of 2016, the National Park Service initiated a study to determine the future uses of the park. Based

on community input, concept plans were developed to activate the riverfront and provide seamless connections to the surrounding neighborhoods and planned Anacostia Riverwalk Trail.

By enhancing the river's edge and removing obstacles, residents and visitors can connect with the river. Buzzard Point Park will be transformed into a distinguishable park along the Anacostia Riverwalk Trail that provides the surrounding community with enhanced public access to the waterfront.

Make Your Voice Heard

There will be a 45-day comment period after the December 13, 2016 public meeting (closing on January 27, 2017). All comments and feedback on the design concepts may be sent to the NPS project website or by completing and mailing the comment to: Tammy Stidham, National Park Service Project Coordinator, National Park Service, National Capital Region, ATTN: Buzzard Point Park Development Concept Plan, 1100 Ohio Drive SW, Washington, DC 20242.

Buzzard Point Park

Design Concept

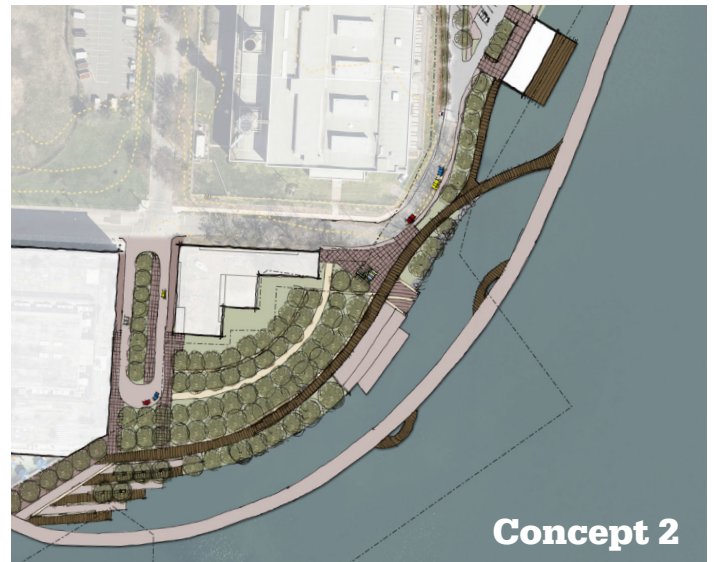
Inspired by the native marshland that historically softened the transition between land and water, the design concept for Buzzard Point Park seeks to restore the natural beauty of the site. Located in a busy urban area, Buzzard Point Park will become a place where residents can stroll down a shoreline promenade lined with trees and marsh grasses, muffling the sounds of the city. The waterfront, once inaccessible, will be transformed into a peaceful retreat for both recreation and relaxation.

The design begins with the shoreline. In sharp contrast to the hard lines traditionally used in waterfront parks, this concept uses soft edges and organic shapes defined by native marsh plantings. This holistic approach provides shoreline stability and flood protection, while making the waterfront accessible. To enhance this experience, a kayak share program is proposed to allow residents a new way to engage with the waterfront.

Along the Anacostia Riverwalk Trail are a series of Recreational Pods (Rec Pods) offering a variety of play, education, and interpretive opportunities. These spaces are intended to be more multifunctional to meet a variety of recreational needs. Each space can be designed to meet a specific need such as a play area, a splash pad, rest stop, fitness station, public art display, or a simple open lawn area. Visitors seeking active recreation will be able to use the continuation of the Anacostia Riverwalk Trail, linking to the existing trail ending at Diamond Teague Park.



This concept transforms the park into a linear waterfront and gateway park serving as the entrance to the Buzzard Point neighborhood. Within the park is both The Anacostia Riverwalk Trail and a pedestrian promenade separated by landscape features including grass dunes and open lawn areas. The shoreline includes a terraced ledge to provide uninterrupted access to the water's edge. Incorporated into the park will be a pilot kayak share program that aims to provide a simple and affordable means to navigate along the river. National Park Service (NPS) and Earth Conservation Corps (ECC) will repurpose the Hansen Center, in partnership, to provide restrooms and other park support amenities.



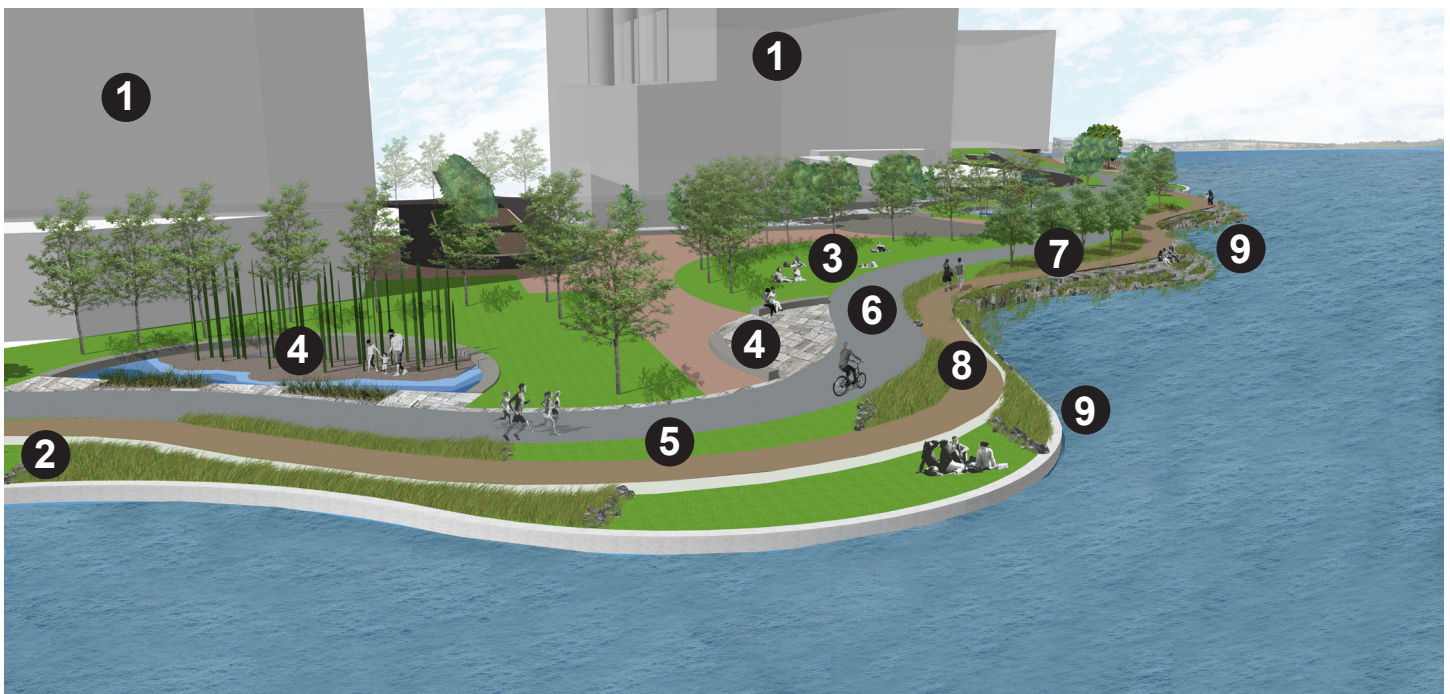
This concept proposes to locate the Anacostia Riverwalk Trail within the river. By elevating the Anacostia Riverwalk Trail over the water, a unique park experience is created, with the potential to become a new DC attraction. Along the elevated trail, overlooks have been incorporated to take advantage of city and river views. This concept also includes many of the same elements as Concept 1, such as the pedestrian promenade, terraced ledge, Rec Pods, repurposing of the existing ECC building, and kayak share pilot program.



Design Drivers

Throughout the planning process, National Park Service has been committed to incorporating feedback from the community. Several overarching themes emerged from the public input NPS received over the past six (6) months. These themes are reflected in the design.

- A** Create a unique and distinct park setting from the existing waterfront fabric.
- B** Include features, elements, and programming that are water based and support and provide maximum accessibility.
- C** Waterfront trail and pedestrian connections are important. Bike and walking paths should be provided.
- D** Transform the river's edge into a regenerative greenspace with a focus on native trees and landscapes.
- E** Direct access to the water should be provided without over-developing the shoreline.



- 1** Adjacent mixed-use high-rise
- 2** Landscape transition zones
- 3** Open lawn
- 4** Rec pod
- 5** Landscape buffer
- 6** Anacostia Riverwalk Trail (20' wide multi-use trail)
- 7** Stormwater filtration
- 8** Pedestrian Promenade (10' wide)
- 9** Terraced ledge for shoreline stabilization

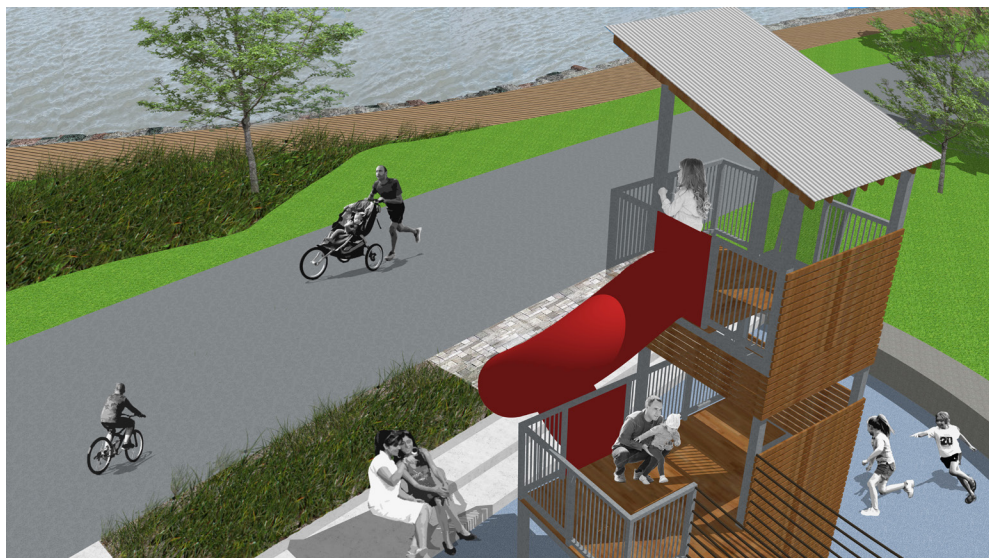
What are Rec Pods?

Recreational Pods, or “Rec Pods,” are small areas creatively designed as multi-generational spaces that combine recreation, education, and play. These will be situated in key locations to provide a fun yet educational experience for park users and enable them to learn more about Buzzard Point Park’s history as a marshland and place of industry. Below are two conceptual ideas that could be further explored for the recreation pods:



Marsh Splash Pad

Alluding to Buzzard Point Park’s origins, we have created a recreational play area for children symbolic of the original marshland. Children will be able to play among synthetic marsh grasses in this innovative splash pad. Interpretive panels will be incorporated describing the history and transformation of this area.



Observation Play Tower

This one-of-a-kind play structure will provide amusement for both kids and adults. Built from repurposed materials symbolizing Buzzard Point’s industrial heritage, it evokes the memory of backyard play forts from childhood. After a climb to the top, park users are rewarded with a panoramic view of the Anacostia River - and a trip down the slide!

Contact:

Tammy Stidham, National Park Service Project Coordinator
(202) 619-7474
tammy_stidham@nps.gov

To learn more and provide additional comments, please visit:

<http://parkplanning.nps.gov/BuzzardPointParkDCP>