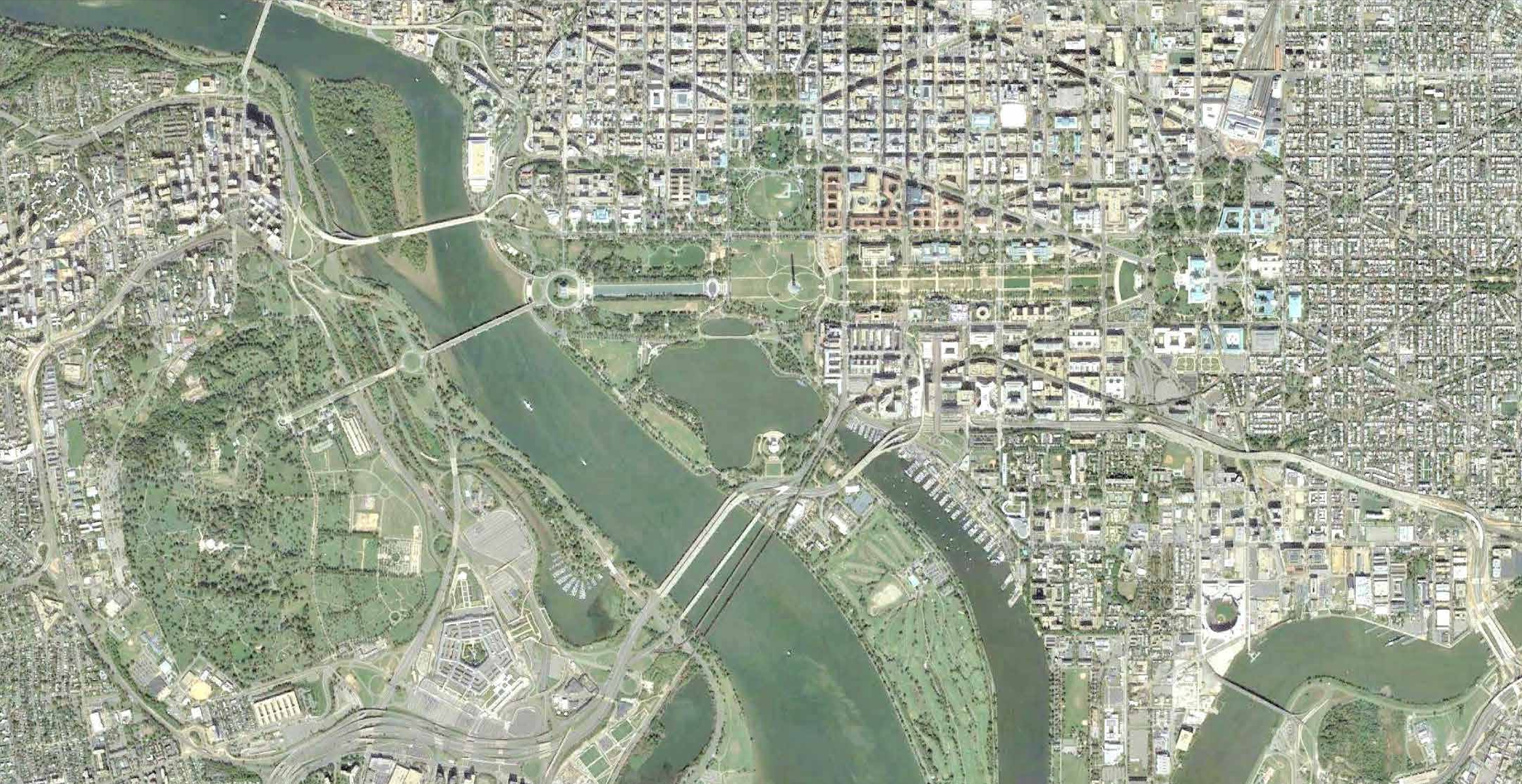


National Desert Storm and Desert Shield Memorial  
Design Public Scoping Meeting

WELCOME



March 27, 2018



National Desert Storm and Desert Shield Memorial  
Design Public Scoping Meeting

# WELCOME

**The purpose of tonight:**

- ▶ Identify any issues or potential concerns associated with the design concepts of the proposed memorial
- ▶ Gather early public input on the scope of the project and study by encouraging you to provide your thoughts and ideas in writing

March 27, 2018



# Project Background and Site Locations

- ▶ Congress authorized establishment of the National Desert Storm and Desert Shield Memorial in Public Law 113-291 on Federal land in the District of Columbia
- ▶ Congress authorized the location of the commemorative work in Public Law 115-18 within Area I as defined under the Commemorative Works Act (CWA)
- ▶ Work must be consistent with the CWA. The CWA provides site and design criteria for commemorative works in terms of surroundings, location, material, and landscape features
- ▶ Construction of the memorial will be sponsored and funded by the National Desert Storm War Memorial Association
- ▶ The memorial will be maintained by the National Park Service (NPS)





# Purpose and Need

## Purpose of the Memorial

- ▶ To commemorate and honor members of the Armed Forces who served on active duty in support of Operation Desert Storm or Operation Desert Shield

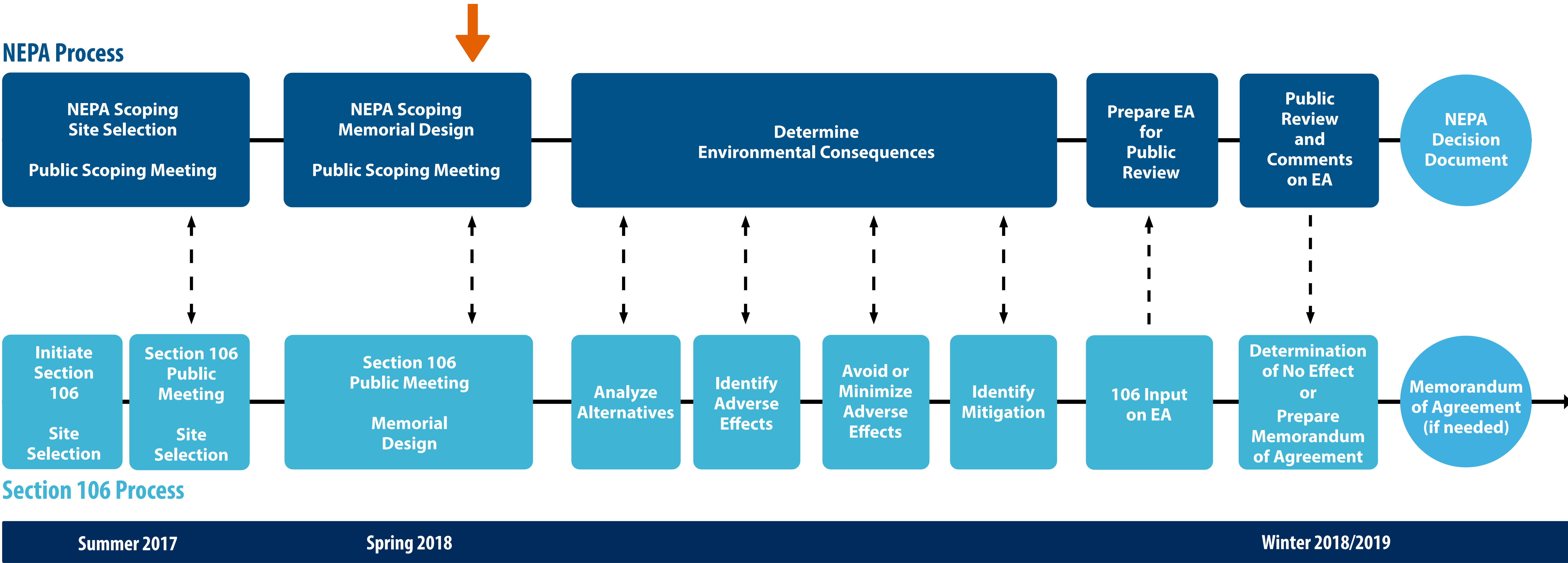
## Need of the Memorial

- ▶ To carry out Public Law 113-291 and address the current lack of a formal place for commemoration of those who served during Operation Desert Storm or Operation Desert Shield





# NEPA and Section 106 - A Coordinated Approach



## What Issues will the EA Address?

**Cultural Resources**

- ▶ Historic Resources
- ▶ Cultural Landscapes

**Natural and Physical Resources**

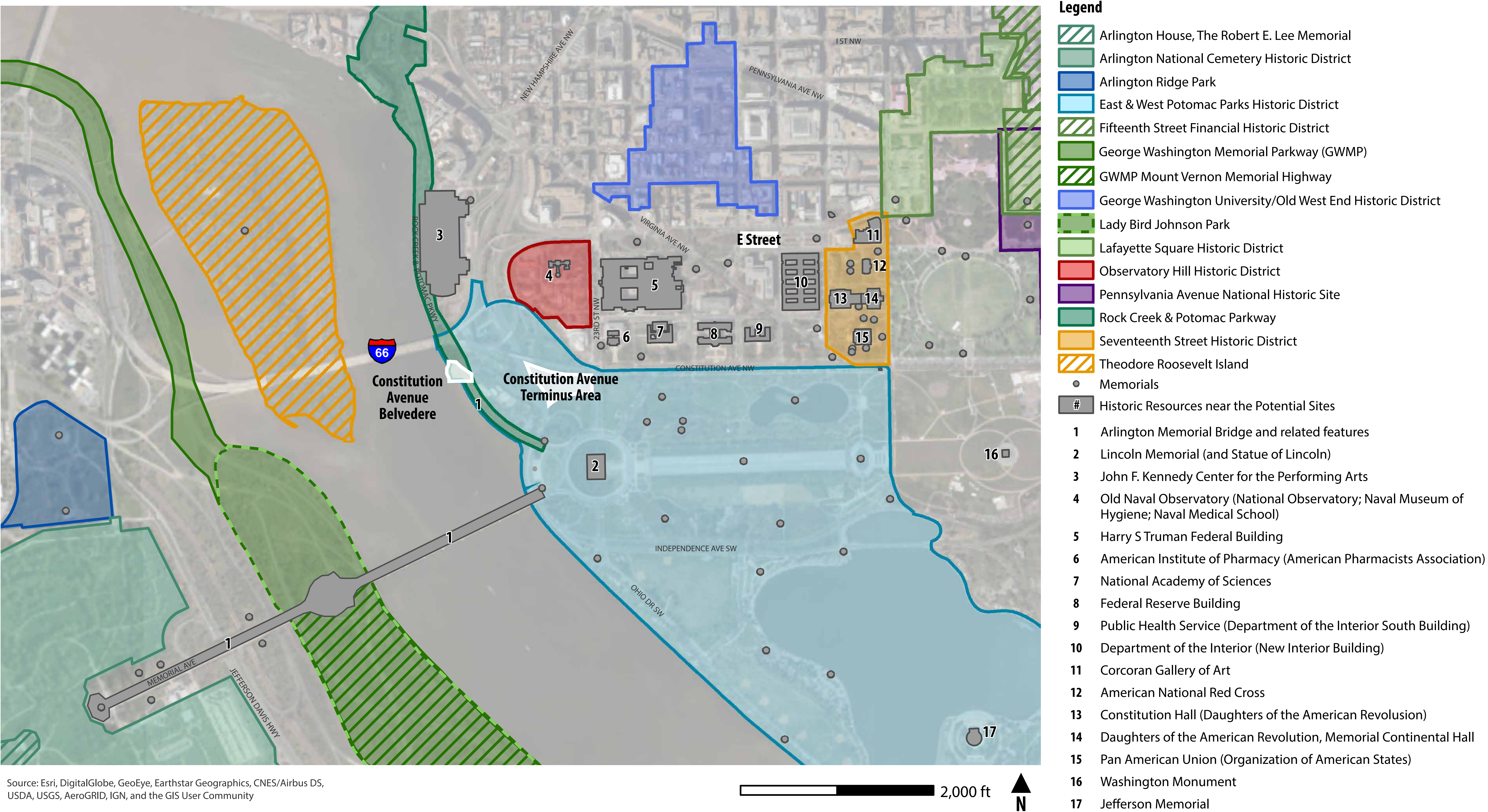
- ▶ Water Resources
- ▶ Stormwater
- ▶ Floodplains

**Other Issues**

- ▶ Visitor Use and Experience



# Historic Resources in the Vicinity of Sites Under Consideration





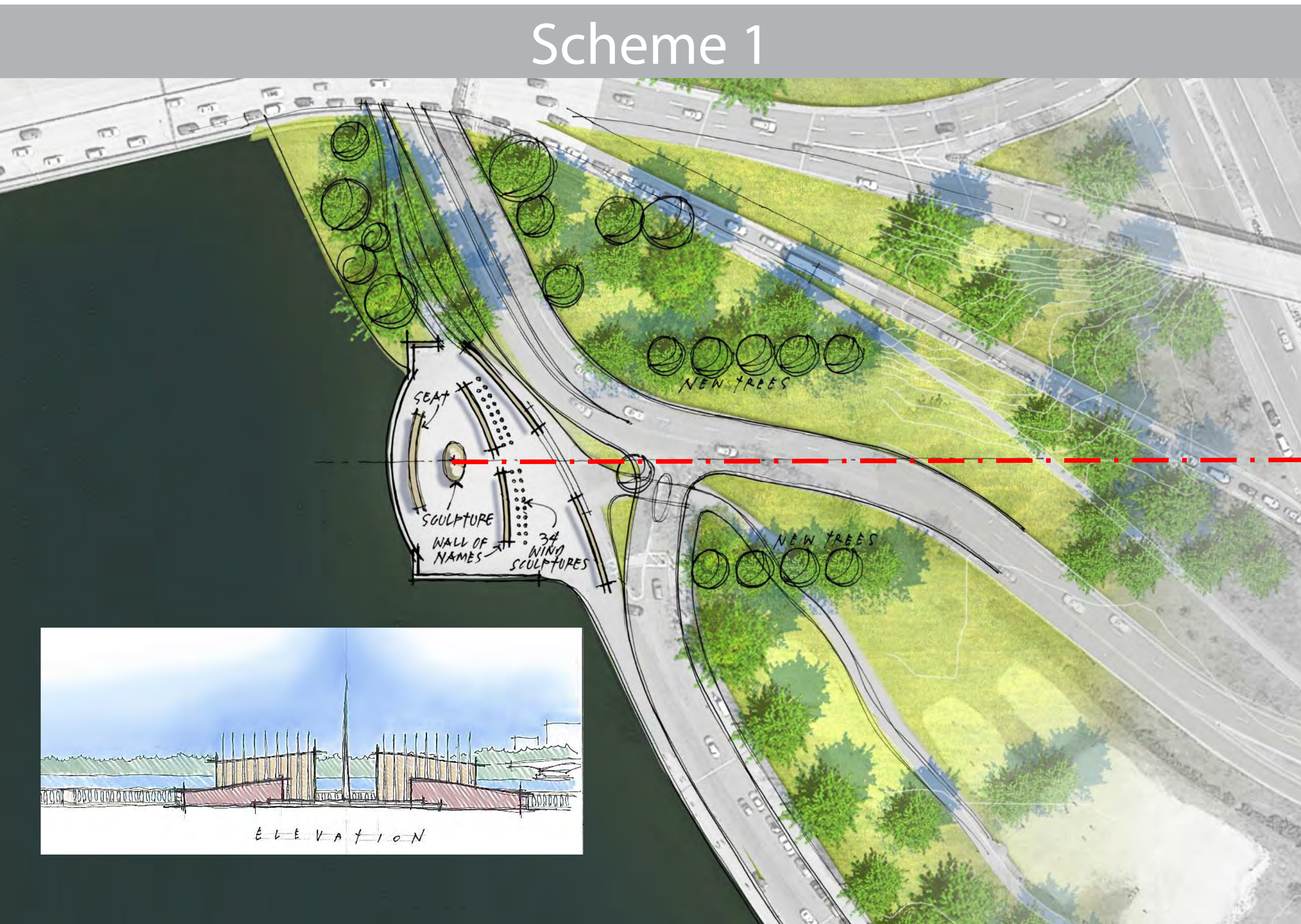
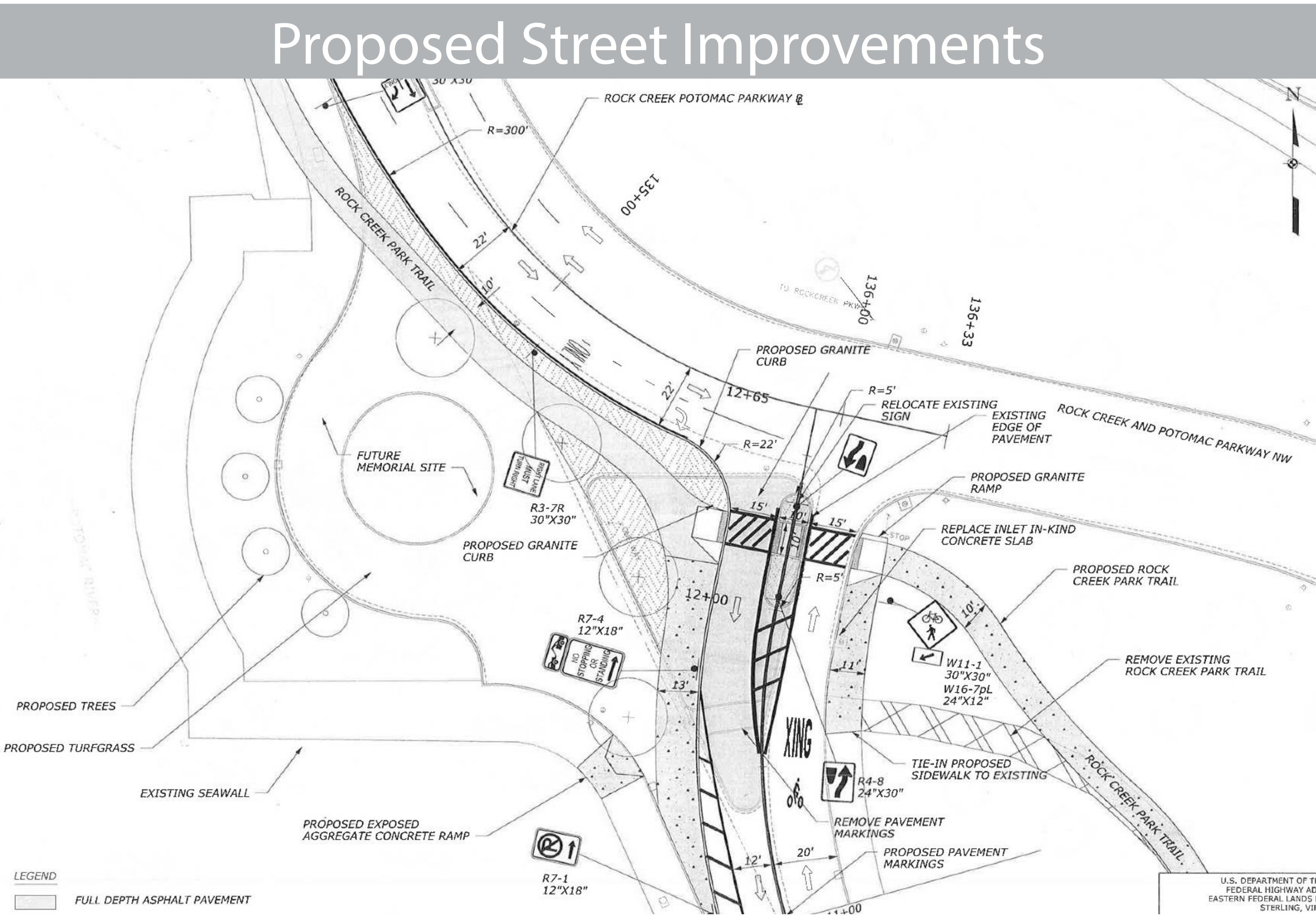
# Constitution Avenue Belvedere



**Site Character:** "The Civic Landscape" A visible, prominent site on the Potomac River

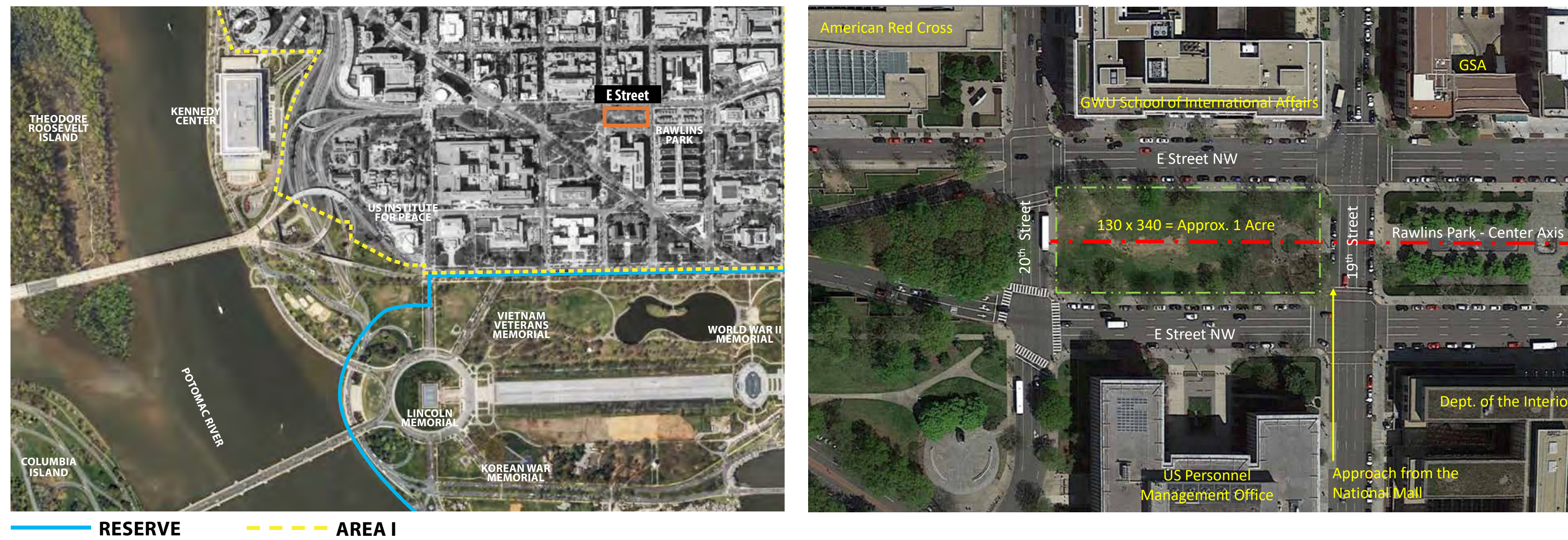
**Site Characteristics:**

- ▶ Historic terminus to Constitution Avenue
- ▶ Visible to & from multiple directions
- ▶ Parallel parking on Potomac Parkway
- ▶ Adjacent vehicular circulation
- ▶ Multi-use trail passes through the site
- ▶ Adjacent to the Potomac River: boundlessness & floodplain
- ▶ 1/2-mile walk to the National Mall & Lincoln Memorial





# E Street

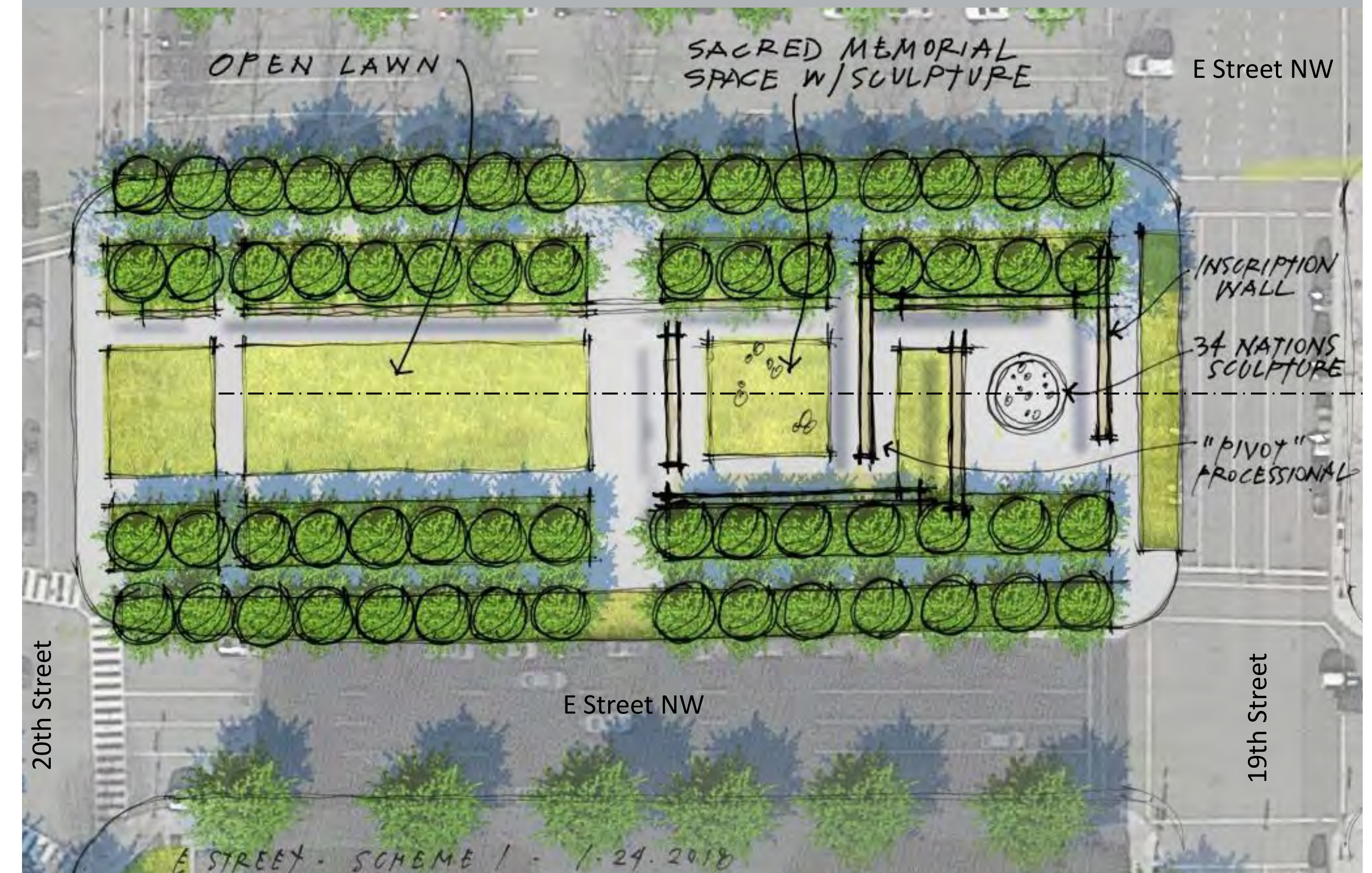


**Site Character:** "The Urban Landscape" *An urban green space*

## Site Characteristics:

- ▶ Urban character, zoned for mixed use
- ▶ Area II location level of prominence
- ▶ Pedestrian accessible
- ▶ On-street parking
- ▶ Bounded by four streets & multi-story buildings
- ▶ Existing park occupies east portion of site
- ▶ 1/4-mile to the National Mall via 19th Street
- ▶ Adjacent to Rawlins Park, with a shared center axis
- ▶ Within anticipated Presidential Corridor

## Scheme 1

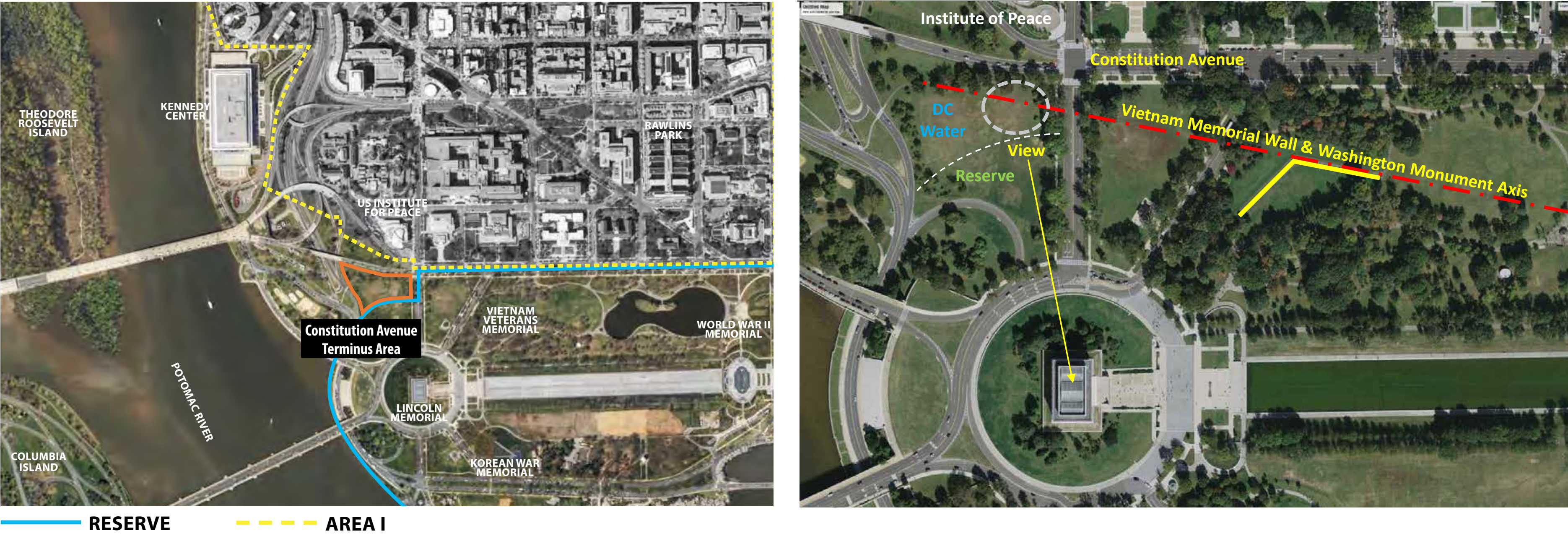


## Scheme 2





# Constitution Avenue Terminus Area



## Site Character: "The Cultural Landscape" Near the National Mall

### Site Characteristics:

- ▶ Adjacent to the National Mall
- ▶ Pedestrian accessible
- ▶ Connections to other national memorials
- ▶ Area I location, the Reserve is to the south
- ▶ On-street parking on Constitution Avenue
- ▶ Lincoln Memorial adjacency:  
A symbol of liberation & freedom
- ▶ Outside of the 100-yr floodplain, within the 500-yr floodplain
- ▶ Coordination with future DC Water & levee projects

