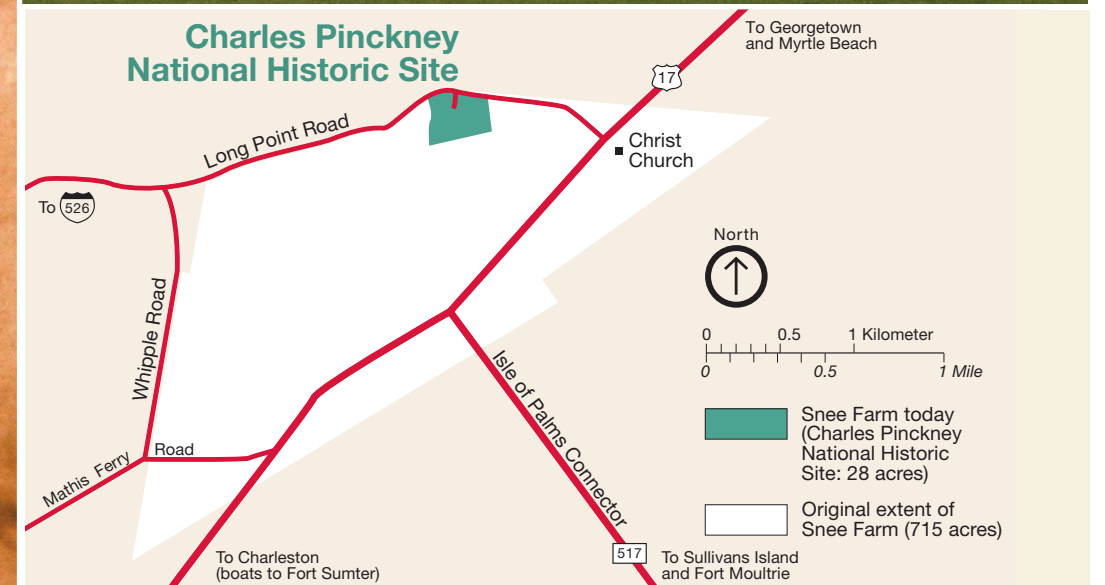
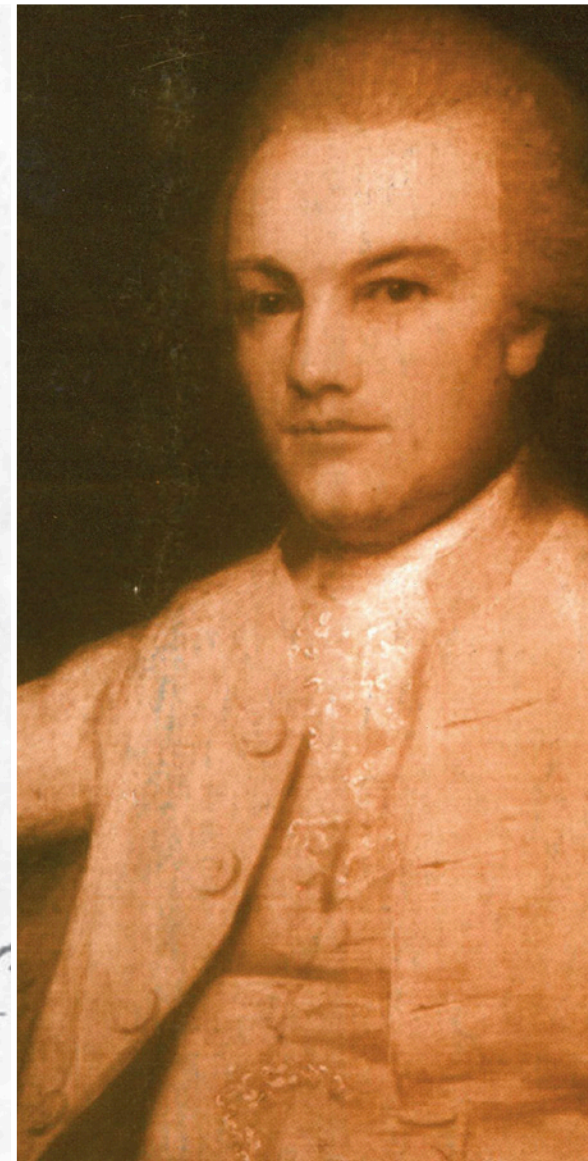


# Snee Farm House | Mt. Pleasant, South Carolina



© designminds

SDI

SDII

DRAFT DDI

DDI COMP

DDII

PDI

PDII



CONTENTS OF THIS DOCUMENT

Table of Contents / Introduction .....1

Building Floor Plan/Scope of Work .....2

Existing Conditions .....3

Current Visitor Flow .....4

Recommended Visitor Flow .....5

Exterior Graphic Panel Area .....6

**DESIGN ALTERNATIVE A:**

    Narrative .....7

    Bubble Plan .....8

    Design Inspiration .....9

    Rendering .....10

**DESIGN ALTERNATIVE B:**

    Narrative .....11

    Bubble Plan .....12

    Design Inspiration .....13

    Rendering .....14

**DESIGN ALTERNATIVE C:**

    Narrative .....15

    Bubble Plan .....16

    Design Inspiration .....17

    Rendering .....18

Overview of Design Alternatives .....19

Universal Design .....20

Key Artifacts .....21

Schedule and Upcoming Deliverables .....22

PURPOSE AND CONTENTS

The Schematic Design I package presents three high-level concepts for new interpretive exhibits at Charles Pinckney National Historic Site. The plans and illustrations in this book are intended to show three compelling approaches to the interior spaces of Snee Farm, so as to move the design forward to a singular vision (the “Preferred Alternative”) in Schematic Design II. To do so, reviewers should evaluate in particular how well the overall story approach meets the goals and needs of the site.

The Schematic Design I deliverable includes:

- This design document, featuring three exhibit alternatives. Narratives, conceptual floor plans, perspective drawings, and design inspirations help explain how each alternative offers a different storytelling and design approach to the space and how each plan meets the established project goals. The descriptions include references to exhibit media proposed in each alternative.
- Class B production estimates and life-cycle cost estimates will help the park assess elements in the design and better compare the different design alternatives.
- The Resource Package Level I records different forms of media—including objects, graphics, and multimedia—that will carry each alternative’s exhibit content. This document is intended to give a first impression of how park resources can be leveraged to tell the story powerfully, but additional selections will occur based on feedback to this package.

We ask the NPS team to evaluate all the deliverables following the presentation of these materials and provide its consolidated comments by September 6, 2019. This review period contains an additional 15 days in order to allow the NPS team to also evaluate community feedback following the July 30, 2019 public presentation. A conference call will follow within one week of comments. The Design Minds will take these notes and feedback and prepare the Schematic Design II deliverable, scheduled for October 18, 2019.

NEXT STEPS

The Schematic Design II deliverable will feature the Preferred Alternative—a singular vision for the exhibits—**which often incorporates elements of each SDI alternative**. The client team should keep this goal in mind as it crafts its consolidated, collated review.

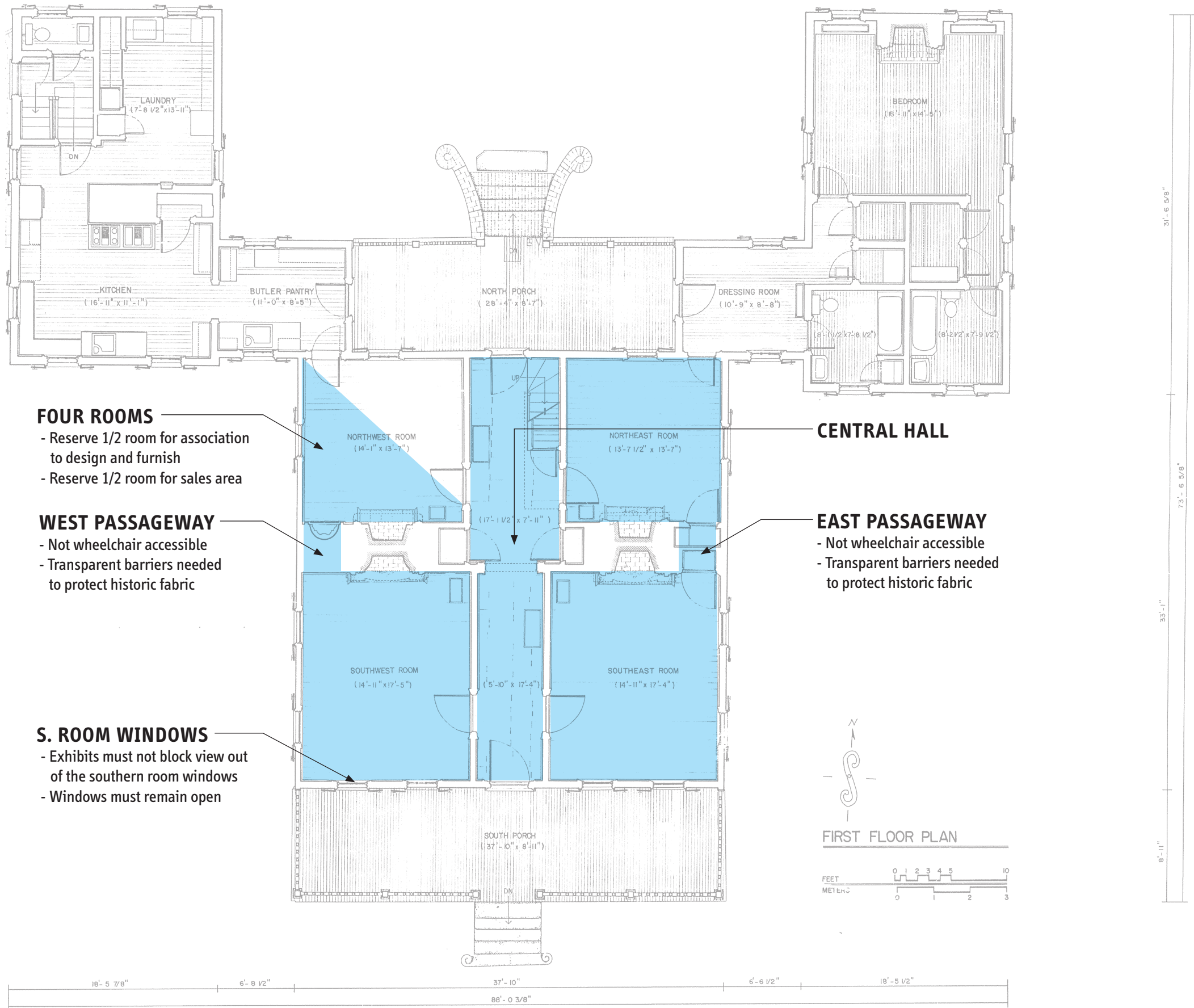
During the meeting and the review period, please consider:

- Which alternative provides the best overall concept for telling the desired story of Snee Farm and Charles Pinckney National Historic Site?
- Do any specific elements of each alternative work well? Which elements do not work as well?
- Are any important themes, stories, or topics missing in the presented alternatives? Does anything strike reviewers as inappropriate?
- Is there a blended “Alternative D” that might include different elements of each alternative presented?
- Are there resources currently being underutilized?

PROJECT GOALS

- Engage visitors with exhibits that complement the building’s architecture and includes a mix of low-tech, multigenerational, hands-on interactives that avoid routine maintenance.
- Utilize the park’s collections to support the design and enhance the interpretive storytelling.
- Ensure exhibits represent the diverse community associated with Charles Pinckney and contextualize the site in relation to other regional sites.
- Exhibits should highlight the founders of the nation, both the Founding Fathers and those not typically thought of, such as their wives and daughters, planters, and enslaved persons.
- Exhibits should be relevant to contemporary visitors.
- The park’s landscape and main structure should be utilized interpretively in addition to collections.

PLAN: SCOPE OF WORK





EXISTING CONDITIONS

- GENERAL NOTES:
- PASSAGEWAYS ON EAST AND WEST SIDES NEED TO BE PROTECTED FROM VISITORS
  - PREFERENCE NOT TO ADD NEW ELECTRICAL PLUG INS AND REUSING EXISTING HOLES IN THE WALLS AND FLOORS PREFERRED



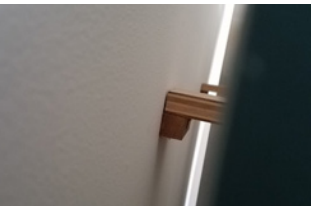
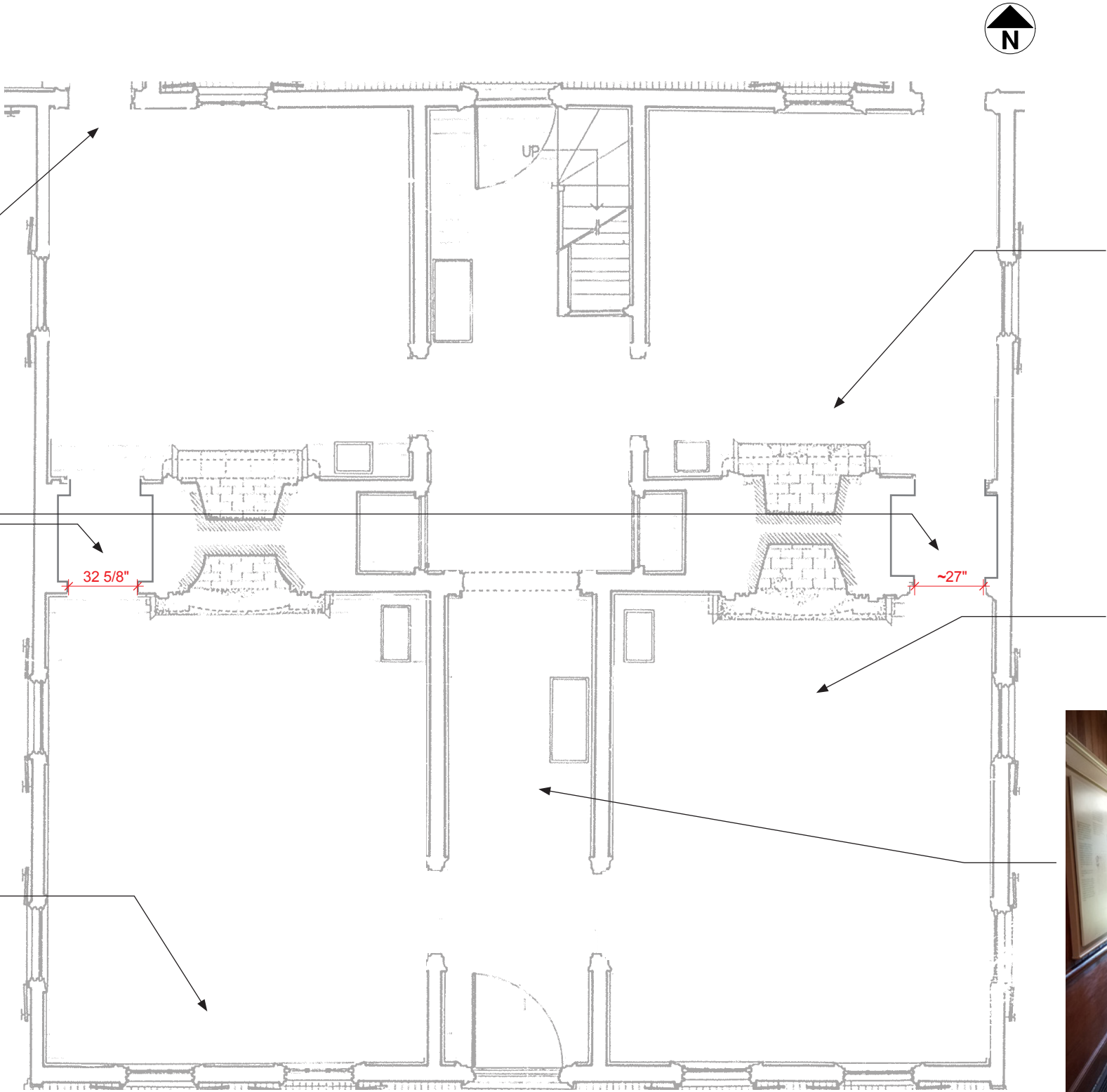
CURRENTLY THE ONLY WHEELCHAIR ACCESSIBLE ENTRANCE IS THROUGH THE RANGER AREA



SOME OF THE EXPOSED ARCHITECTURE AND BUILDING ELEMENTS TO BE PROTECTED FROM VISITORS



EAST PASSAGEWAY IS TOO NARROW FOR ACCESSIBILITY



DETAIL SHOWING ATTACHMENT METHOD OF EXISTING DISPLAYS



PARK TO DETERMINE IF SOME AIR VENTS CAN BE COVERED OR REMOVED TO EXPOSE THE BUILDING'S FOUNDATION

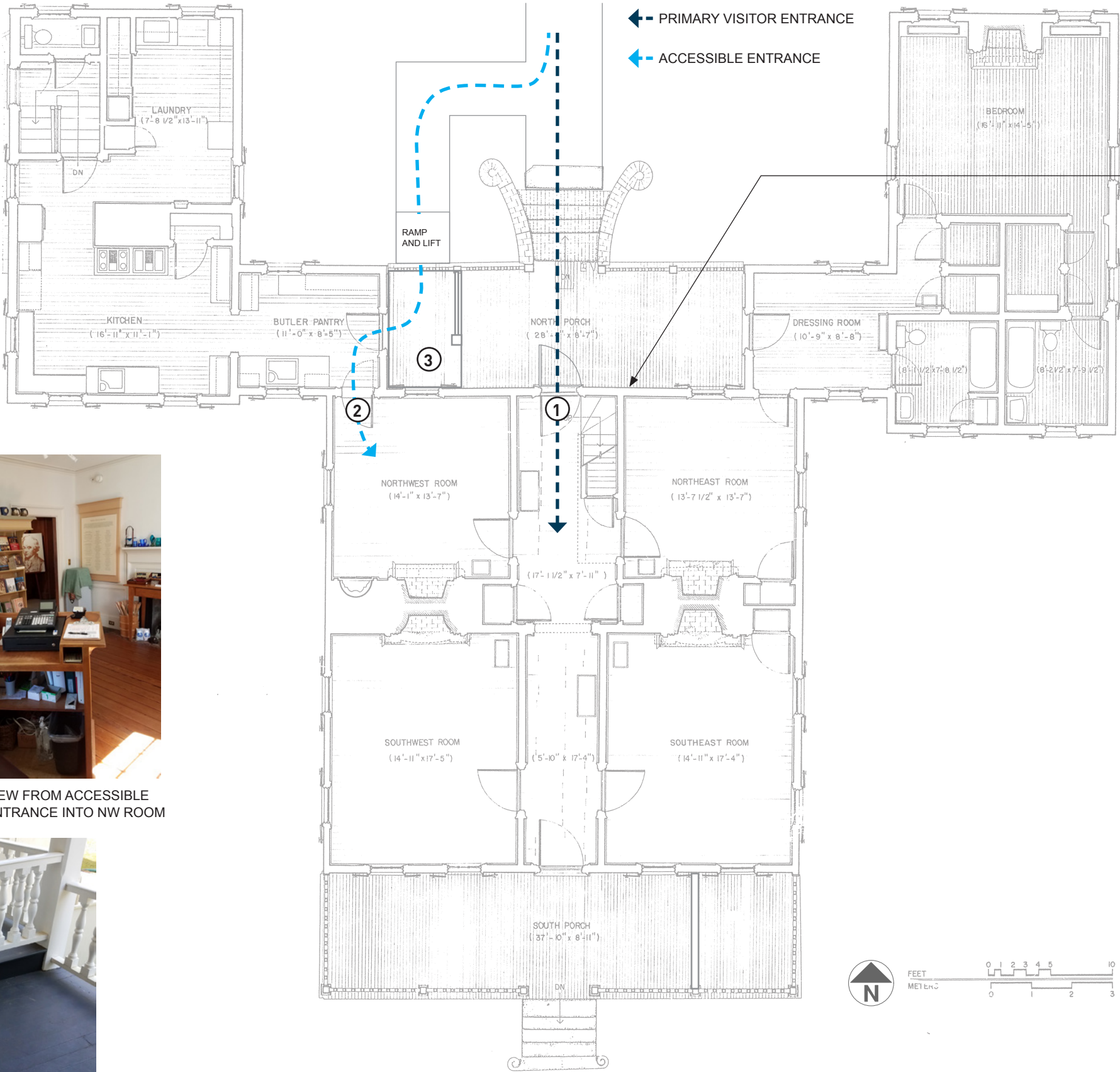




CURRENT VISITOR FLOW



PRIMARY VISITOR ENTRANCE  
VIEW FROM NORTH



EXISTING GRAPHIC PANEL  
PANEL IS CURRENTLY  
INACCESSIBLE BY A VISITOR  
USING A WHEELCHAIR.



① VIEW FROM FRONT DOOR  
(PRIMARY ENTRANCE)



② VIEW FROM ACCESSIBLE  
ENTRANCE INTO NW ROOM



③ PLATFORM AT ACCESSIBLE ENTRANCE DOOR



RECOMMENDED VISITOR FLOW



PRIMARY VISITOR ENTRANCE  
VIEW FROM NORTH, SHOWING ELEVATOR.  
WHITE LINES INDICATE POTENTIAL NEW RAMP.

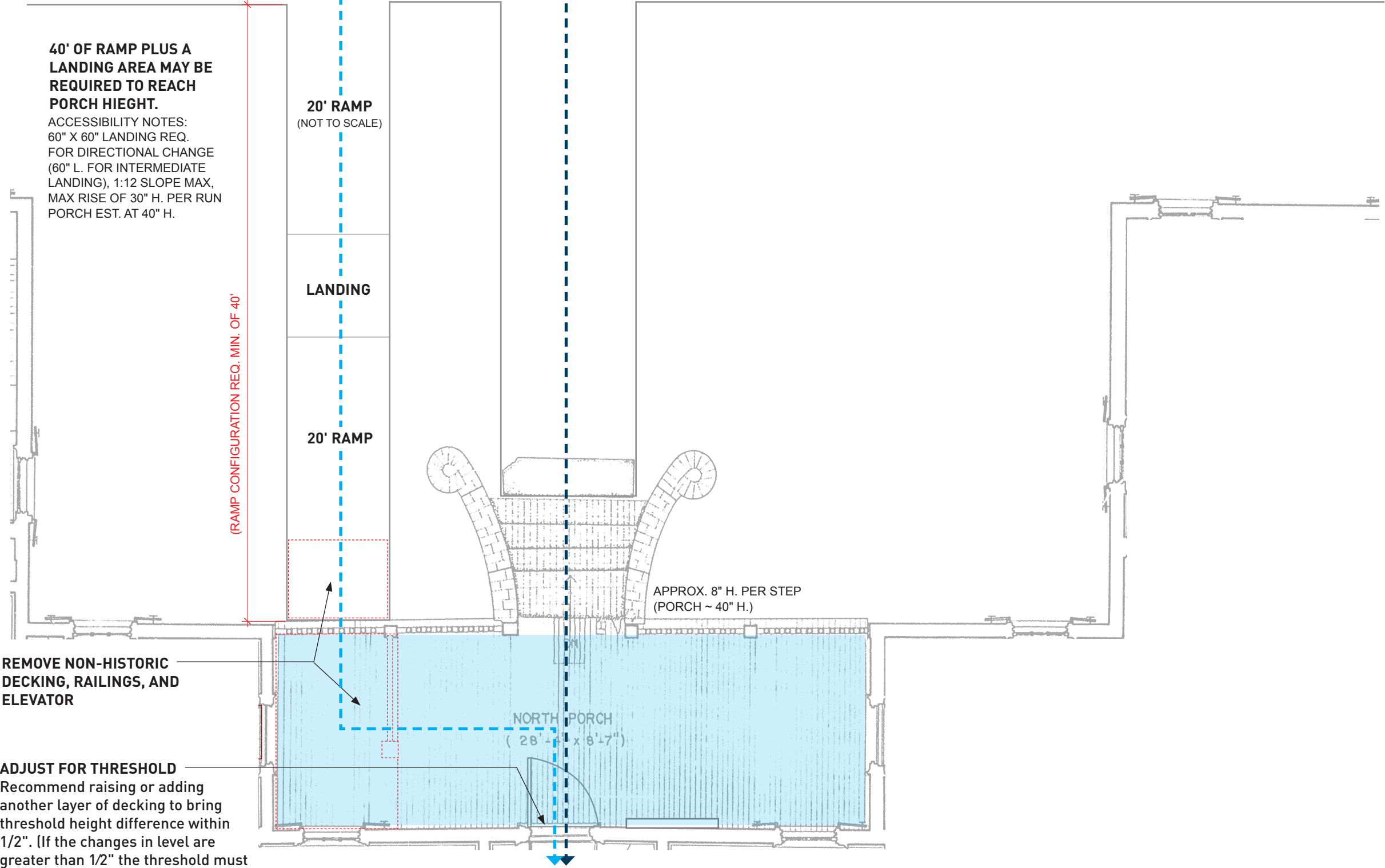


PLATFORM AT ADA ENTRANCE DOOR



RAISED THRESHOLD AT ENTRANCE DOOR

NOTE: Recommended changes are not included the exhibit design SOW or budget. An engineer needs to assess feasibility and code requirements.



REMOVE NON-HISTORIC  
DECKING, RAILINGS, AND  
ELEVATOR

ADJUST FOR THRESHOLD  
Recommend raising or adding  
another layer of decking to bring  
threshold height difference within  
1/2". (If the changes in level are  
greater than 1/2" the threshold must  
be equipped with a ramp).

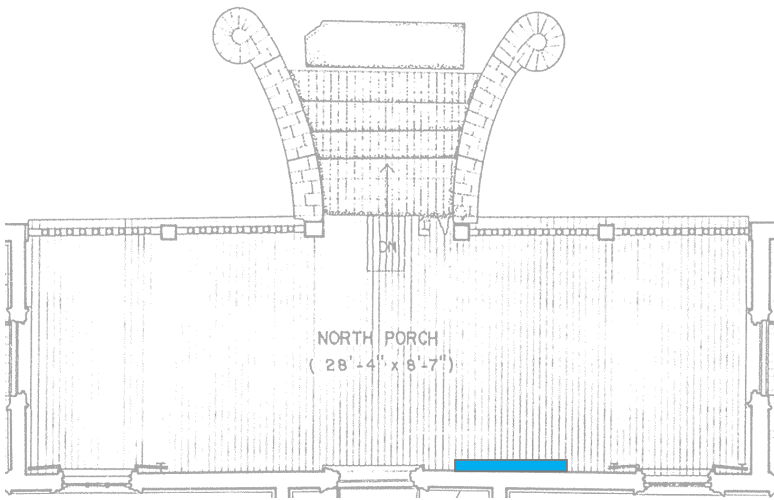
1 PLAN: NORTH ENTRANCE  
Scale: 3/16" = 1'-0"

0 1 2 3 4 5 6 7 8 9 10 FT





EXTERIOR GRAPHIC PANEL



EXISTING GRAPHIC PANEL AT ENTRANCE

Recommend changing this graphic with a new graphic with less text and in the style of the chosen alternative.



“VISITOR CENTER”  
NPS arrowhead is added to the existing frame. Graphic is replaced with simple text and exhibit title or quote, clearly indicating the building as a visitor center and inviting people up to the entrance.



“REWARD”  
NPS arrowhead and “Vistor Center” text are added to the existing frame. Panel is replaced with a graphic evocative of a runaway slave ad. Upon closer review, it will speak to the ideas of a forgotten father, lost drafts, and an absence of the people who once lived here. The reward is knowledge. “Please share any information you may learn.” may be a nice prompt for social media sharing.



FORGOTTEN FOUNDERS:  
PINCKNEY AND THE GLOBAL COMMUNITY AT SNEE FARM

EXHIBIT NARRATIVE

Exhibit Overview

The story of Snee Farm is a global tale influenced by people of multiple nations and backgrounds who lived and worked at this plantation, transformed the region, and built America. The farm’s story evokes the values and practices of not only Charleston’s Lowcountry society, but also demonstrates key cultural aspects of European society, African nations, and other groups.

Although not a successful agricultural enterprise during the life of Charles Pinckney, the Snee Farm plantation nevertheless was a sign of his wealth in the region. The farms’ enslaved, black residents maintained a connection to other plantations and enslaved communities in the region. The ingenuity of enslaved laborers and their mastery of practices from Africa made rice and indigo cultivation flourish in Charleston and the surrounding Lowcountry. As one of the sites of Charles Pinckney’s wealth and a place of human bondage, the plantation offers a portal into South Carolinian politics, society, and divisions from the American Revolution through today, particularly regarding race, slavery, an agricultural economy, and rural vs. urban divides.

Nationally, the site is significant as one of many plantations which allowed “great men” like Charles Pinckney the ability to travel, obtain an education, and ultimately spend time crafting the guiding documents of our nation’s founding. Pinckney’s particular political decisions during the crafting of the US Constitution also set the stage for the American Civil War and a great political divide over the issue of slavery. His words and views, informed by Snee Farm, his family, financial status, and his experience as a slave owner, influenced his decision making while at the Constitutional Convention and in later public roles. Pinckney and his fellow Southerners brought a unique Southern influence that can be explored at the farm.

In the international context, the site is a blending of cultures and traditions from Africa, Europe, Asia, and other parts of North America.

Enslaved people combined African religious beliefs, skill sets, and ingenuity with European practices to create uniquely American traditions. Ideas and writings from across the Atlantic, the French Revolution, Haitian Revolution, colonialism in India, and more, impacted life at Snee Farm, the views of Charles Pinckney, and ultimately the Constitution itself.

Visitor Experience

Each section will highlight key aspects of the history of the site and its inhabitants throughout time, from the American Revolution to today, including Native American, intellectual, and geological histories where applicable. A tactile exhibit plan and eye-catching exhibit introduction set the stage for visitors, before allowing them to explore each room in any order they choose. Content is interpreted thematically through the lens of the farm’s regional, national, and international setting.

Large map graphics from different notable periods in the farm’s history set the tone for each section, highlighting the farm and a relevant event, movement, etc. that corresponds with that section. For example, the international room could feature a map showing routes of slave ships to Charleston or notable global events that Pinckney was aware of. Pop-out turntable elements on graphics noted with key symbols explain concepts or terms through time in engaging panels and question and answers. Sounds of Bible readings, hymns in Gullah, readings from Charles Pinckney’s speeches, Charleston news reports, and more are incorporated where relevant to bring life to the story. Interactives are incorporated in each of the main rooms to bring more connections to experiences at Snee Farm when it was used as an agricultural center and operated by enslaved labor. A large feedback station located in the Ranger Station/Bookstore area allows visitors to leave thoughts on the material presented and add a pin or other marker to a large, global map to note where they come from and add their own “mark” or experience to the story.

ALTERNATIVE A  
FORGOTTEN FOUNDERS: PINCKNEY AND THE  
GLOBAL COMMUNITY AT SNEE FARM

THE BIG IDEA

The story of Snee Farm is a global tale influenced by people of multiple nations and backgrounds who lived and worked at this farm, transformed the region, and built America.

VISITOR OUTCOMES

Agricultural demands and global events affected this area’s development and life at Snee Farm.

Everything is connected: ideas and events in South Carolina influenced global movements and vice versa.

I feel connected to this place and proud as an American.

SPACE PLANNING & EXHIBIT FLOW

Interpretive exhibits are located within the existing exhibit rooms.

An open floor plan with thematic groupings enables visitors to explore the exhibits in any order they choose.

A feedback station located in the bookstore makes it an ideal place to encourage further exploration outside.

DESIGN APPROACHES

Color schemes and design are inspired by historic maps and the various cultures are represented, including the Gullah Geechee, European-Americans, and Native Americans.

Large maps draw visitors into exhibit areas and provide high-level interpretation that sets the tone of the room.

Inset artifact cases connect the items with the story.

PROJECT:

Charles Pinckney National Historic Site, Snee Farm House  
Exhibit Planning and Design

PHASE:

Schematic Design I  
July 24, 2019

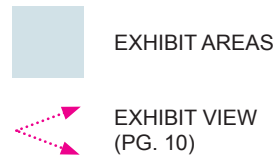
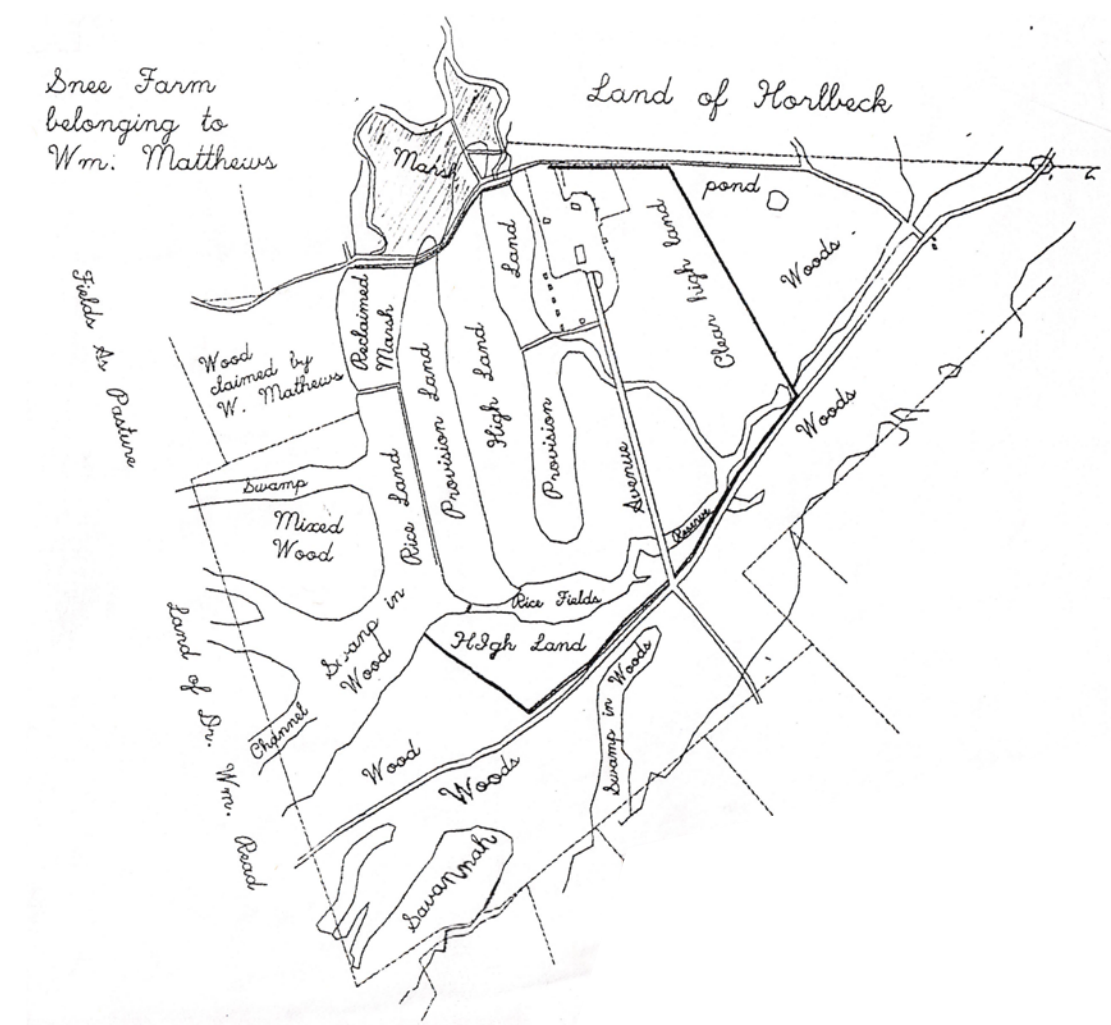
SCALE:

Scale = N. A.

DRAWINGS:

Alternative A: Exhibit Narrative

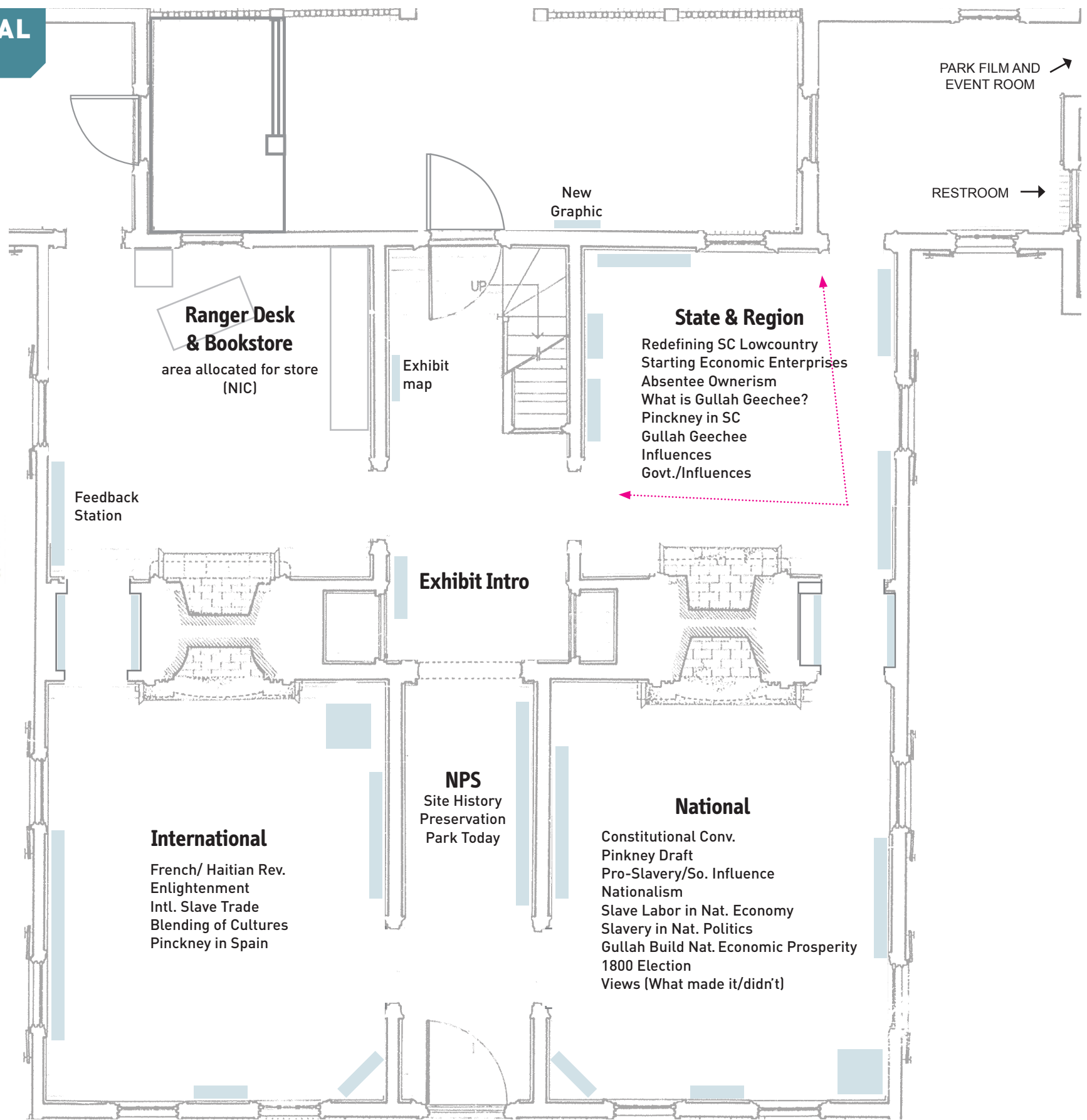




1

PLAN: ALT. A  
Scale: 3/16" = 1'-0"

0 1 2 3 4 5 6 7 8 9 10 FT





ALT  
A

FORGOTTEN FOUNDERS: PINCKNEY AND THE GLOBAL COMMUNITY AT SNEE FARM

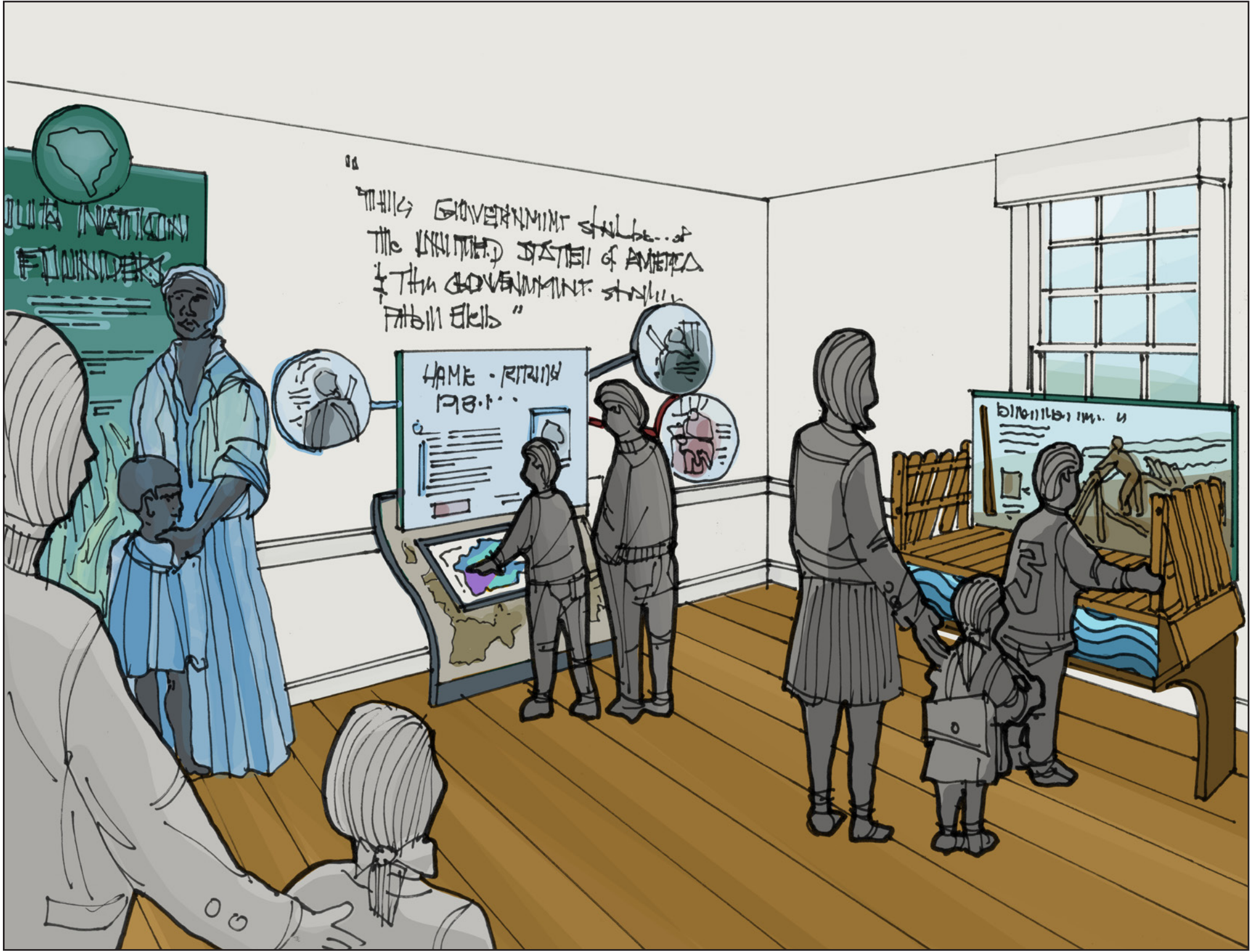
NPS

State & Region

National

International





This View:

Visitors enter the south Main Room through either the Hallway or East Passageway and encounter interpretation focused on Snee Farm in the national context. Charles Pinckney, his family, the enslaved persons in the region, white overseers, and others all influenced and contributed to the building of a new republic, the Constitution, and the founding principles of the nation. The blending of European, African, and other American cultures also helped create a uniquely American identity.

A centralized Overview Panel introduces the main themes of the room and an eye-catching tactile map showing all of the known voyages of ships transporting slaves from Africa and the Caribbean to Charleston is displayed. Artifact cases and large graphics assist in bringing the story alive, while interactive spinners with additional content contextualize the story over time. Large quotes from key figures or possibly interpretive questions can be utilized on the walls to provide quick prompts for further reflection on the content. An interactive flipbook contrasts key Pinckney provisions in the Constitution with the actual language that made it in and interpretation on what influenced his decision making.

Although not pictured in this view, sub graphic panels in each room allow for deeper-dives into a particular piece of the story. For this room, the Election of 1800 is examined, in which Pinckney became influential in securing the Thomas Jefferson’s victory by managing his campaign in South Carolina and even turning against fellow family members. Other possible interactives for this room could focus more on culture and how Gullah Geechee influenced Southern and national food trends.



# LOWCOUNTRY ROOTS: FORGING A NEW AMERICAN IDENTITY

## EXHIBIT NARRATIVE

### Exhibit Overview

The founders of our nation forged a unique American identity, influenced by Southern ideas and experiences found at Snee Farm, and created a lasting legacy of democracy, ingenuity, inequity, and resilience that continues today. Charles Pinckney’s Snee Farm represents a diverse range of American history and lived experiences. The farm simultaneously stood as a symbol of opportunity and oppression, innovation and resilience, and preservation and loss.

For Pinckney and his family, the farm site represented a “Country home” for a wealthy family and highlighted their status as elite to other white landowners in the region. The farm and other holdings, as well as the work of enslaved persons at his properties, further allowed him the opportunity to travel, obtain an education, and debate our nation’s founding principles. For enslaved persons of color, the place was a site of oppression and the farm itself a beacon of opportunity and freedom unavailable to them at the time. The ingenuity and ability of both Europeans and Africans to adapt to thrive in the humid, swampy South Carolina Lowcountry is also featured in exhibits. Furthermore, Gullah Geechee communities were resilient in maintaining their own ideas, cultural practices, foodways, music, and more.

The beliefs and experiences of these individuals had a lasting impact on the foundation of our country. Pinckney’s words and ideas helped forge the basis of the Constitution and live on today as they continue to be reinterpreted. Similarly, enslaved persons and the Gullah Geechee, who continue to maintain their heritage and a connection to the land, can trace their roots as similar founders, bringing new ideas, practices, and building our nation. The Constitution’s unique Southern influences can be understood through the shared lived experiences of those who lived, worked, and died at Snee Farm.

### Visitor Experience

The Intro Exhibit element in the main hallway entrance serves as an introduction and exhibit overview, mirroring the style of other exhibit structures found in the home. Visitors are then encouraged to enter into the first main room containing an overview of the site’s history and centered with an interactive, tactile map of Snee Farm, although content can be experienced in any order. A timeline of major happenings at the farm spans one corner of the room while windows on the east side of the room feature translucent graphic treatments showing perhaps the farm in the past or workers outside. The East Passageway is repurposed as a double-sided artifact case, with interpretation on this side focusing on archaeology work done at the site and what it can tell us about the history of those who lived here.

Walking through the hallway, visitors pass through a soundscape element with graphics on each side that change from agricultural workers and enslaved persons to the founding fathers signing the Constitution. Sounds of mosquitos buzzing, work songs, or speeches from the Constitutional Convention are also incorporated. The two Main Rooms on the south side of the building feature titles over the main entrances and are thematically arranged, allowing exploration in either order. The southeast Main Room focuses on the forging of an American identity and the ingenuity of the American founders, both the “great men” and those not typically considered as founders. An open scenic exhibit structure in the center of the room features most of the content, as well as some high level interpretation. Two interactives are featured, one matching Pinckney proposals with the final draft of the Constitution and the other demonstrating sweet grass weaving or an agricultural practice. The southwest Main Room again features a central exhibit structure with much of the main content. An additional exhibit element features an AV interactive that juxtaposes some of Pinckney’s beliefs and ideas with their continued legacy today. Other possible interactives for this room include a facilitated dialogue station that can be used by two visitors and a scenic floor covering in the West Passageway depicting an archaeological dig at the site.

## ALTERNATIVE B LOWCOUNTRY ROOTS: FORGING A NEW AMERICAN IDENTITY

### THE BIG IDEA

The founders of our nation forged a unique American identity, influenced by Southern ideas and experiences exemplified at Snee Farm, and created a lasting legacy of democracy, ingenuity, inequity, and resilience that continues today.

### VISITOR OUTCOMES

Southern ideas and society greatly influenced the nation’s founding.

Individuals at Snee Farm and Gullah Geechee people fought inequality and created a legacy of resilience.

There are real, diverse stories of people here.

### SPACE PLANNING & EXHIBIT FLOW

An orientation space in the northeast Main Room provides an in-depth timeline of events at Snee Farm and helps orient visitors to the story.

The East Passageway is repurposed as a double-sided exhibit case, encouraging visitors to walk through the main Hallway to experience the soundscape element.

Central structures in each room create an open floor-plan to be explored.

### DESIGN APPROACHES

Floor graphics, overhanging titles, and immersive, scenic elements lead visitors through the exhibits and tie to each topic.

Exhibit structures and panels are designed to appear flowing and flag-like and are combined with strong colors to reinforce a sense of identity.

People-focused stories woven throughout the narrative and via people panels help visitors connect with the exhibits.

PROJECT:

Charles Pinckney National Historic Site, Snee Farm House  
Exhibit Planning and Design

PHASE:

Schematic Design I  
July 24, 2019

SCALE:

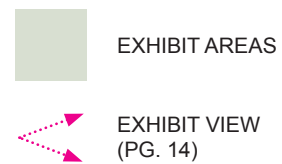
Scale = N. A.

DRAWINGS:

Alternative B: Exhibit Narrative



# LOWCOUNTRY ROOTS: FORGING A NEW AMERICAN IDENTITY



1 PLAN: ALT. B  
Scale: 3/16" = 1'-0"

0 1 2 3 4 5 6 7 8 9 10 FT



60" TWO-WAY VISITOR TRAFFIC  
AND WHEELCHAIR TURNAROUND



36" WHEELCHAIR CLEARANCE  
AND ONE-WAY TRAFFIC  
(32" MIN. AT PINCH POINTS)



PROJECT:

Charles Pinckney National Historic Site, Snee Farm House  
Exhibit Planning and Design

PHASE:

Schematic Design I  
July 24, 2019

SCALE:

Scale = 3/16" = 1'-0"

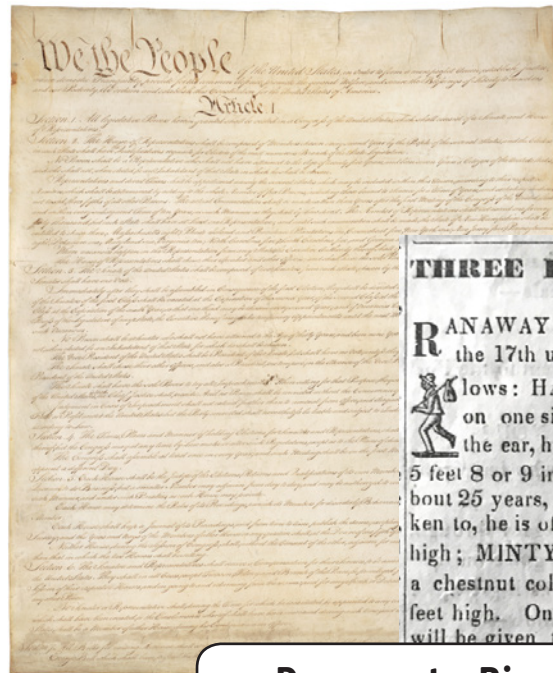
DRAWINGS:

Alternative B: Bubble Plan





# LOWCOUNTRY ROOTS: FORGING A NEW AMERICAN IDENTITY



Documents, Rice, Sweetgrass



ANN BRODESS,  
Dorchester county, Md.  
azette will please copy  
and charge this office.



Framing, Fleeting Ribbons, Converging Curves



Contrasting Labor/Society

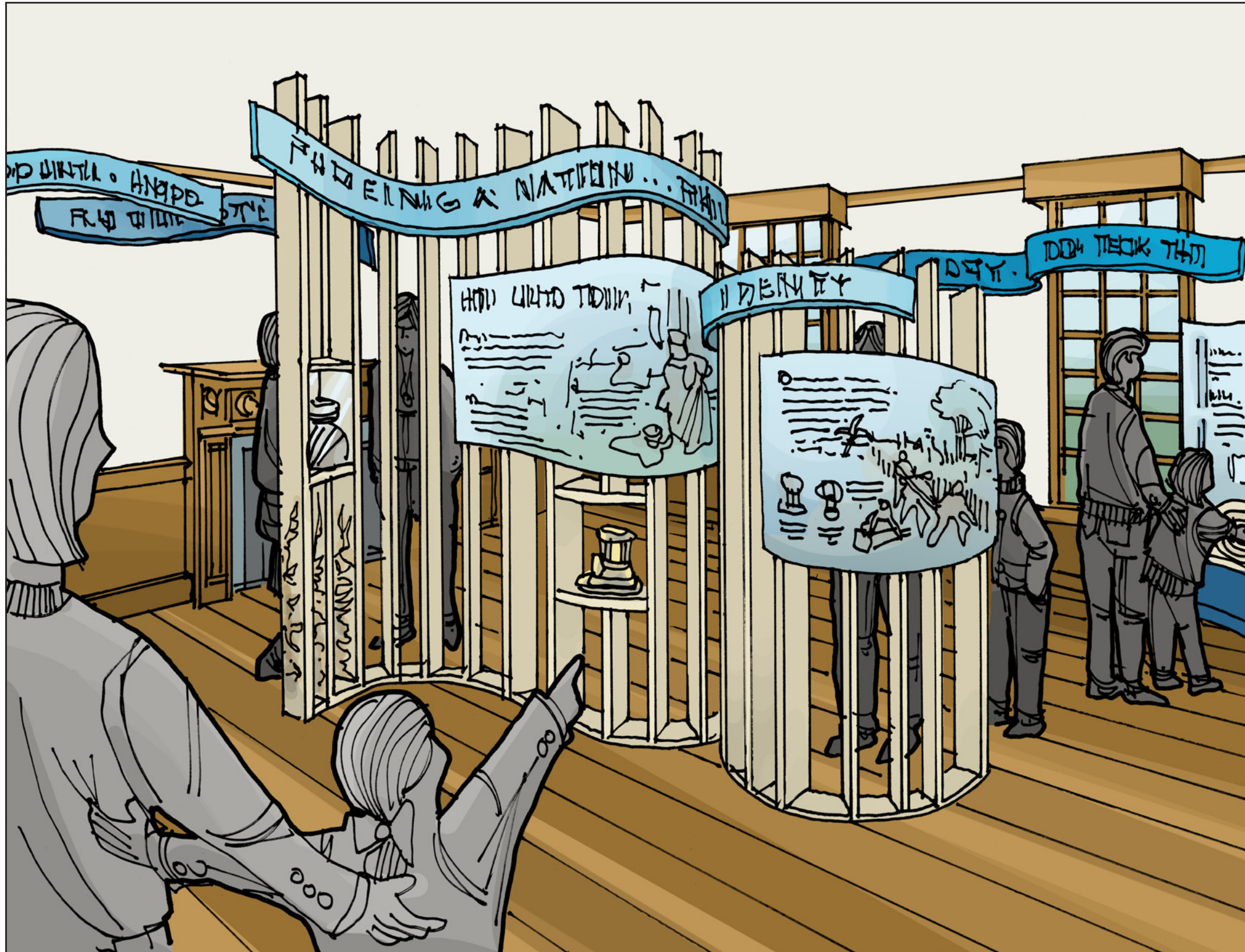


Indigo, Gullah Haint, Perseverance





## LOWCOUNTRY ROOTS: FORGING A NEW AMERICAN IDENTITY



### This View:

The southeast Main Room features a title element above the entrance. As visitors enter the room, they first encounter the main, center exhibit structure. Constructed as vertical slabs placed at regular intervals, the structure has an open feel with graphic panels attached, artifacts, and interactives. Large main graphic panels with dominant imagery and interpretive text tell the story, while inset artifact cases add tangible representations and provoke new connections. The exhibit element's wall structure could be printed on with images from the farm's past or imagery representing the indigo, rice, Sea Island cotton and other agricultural products grown here.

Sweeping, overhead graphics prompt additional thought on the content by featuring interpretive questions posed to visitors or possibly key phrases and quotes. Interactive elements are also included in the main exhibit structure, as well as matching elements located on the southern side of the room. Interactives for this room focus on the ingenuity, knowledge, and skill-sets exhibited by Pinckney, the enslaved workers, and others. Possible interactives include a basket weaving/sweetgrass interactive, repurposing of the existing rice trunk, and an AV interactive matching Pinckney's proposed ideas with the final draft of the Constitution.

Not seen in this view is the rear of the double-sided artifact case, repurposed from the East Passageway, which is also interpreted in the northeast Main Room. While interpretation in the opposite room focused on the archaeology of the items featured, content in this room reinterprets the items to examine their uses by enslaved persons and Pinckney in building America.

#### PROJECT:

Charles Pinckney National Historic Site, Snee Farm House  
Exhibit Planning and Design

#### PHASE:

Schematic Design I  
July 24, 2019

#### SCALE:

Scale = N. A.

#### DRAWINGS:

Alternative B: Conceptual Rendering



SOUTHERN SUPPORT: PINCKNEY’S PLAN AND THE CONSTITUTION

EXHIBIT NARRATIVE

Exhibit Overview

This alternative highlights the idea that the Constitution and our nation’s founding contained a uniquely Southern influence which continues to inform our nation’s decisions today. These influences stem from both the perspectives and ideas of “Great Men” like Charles Pinckney, who crafted his own plan for the Constitution, and the countless individuals who supported his ability to perform this work and whose experiences have traditionally been excluded from narratives of the nation’s beginning, notably that of the enslaved persons at Snee Farm and the Gullah Geechee culture. The Constitution remains a living document which continues to evolve. Social, racial, economic, and political issues continue to shape America.

Visitors are presented with a milieu of exhibits—including powerful imagery, facilitated dialogue stations, audiovisual elements, and primary source materials—that present differing themes of Pinckney’s influence through three, main interpretive questions: Who holds the power in government?; What are the rights of the people?; How will the economy function? Exhibits will allow visitors to understand how Pinckney’s views were informed by his experiences at Snee Farm and elsewhere as a slave owner, how the agriculture-based economy of the South and the South Carolina Lowcountry left a lasting impact on our government’s operations, and how the Constitution, as a living document, continues to carry and respond to these influences today.

The central exhibit structures in each of the Main Rooms provide a snapshot of one of these main thematic questions over time. The backside of these structure features glass panels with images providing a snapshot of that theme’s legacy through time (see following pages for examples of glass method proposed). For example, images of enslaved persons working on a plantation can be used with images of workers in factories or a chain gang of prisoners from the post-Civil War era. These provide high-level interpretation of the different struggles diverse Americans of different socio-economic, racial, and other backgrounds have experienced, while additional text on the structure interprets these

changes and arguments. Additionally, each room features sweeping reader rail structures around the perimeter of the space. These allow for more room for interpretive text, images, artifacts, and possibly interactives. The rail’s base structure is different in each room, but the supports feature symbolic representations of items which add to the high-level interpretation that our nation’s founding was supported by Southern agriculture and these lesser known experiences and perspectives. Some possible thematic items included in these base structures, which can better be understood by viewing the sketch on the following pages, include indigo, rice plants, agricultural tools, spinning wheels, or sweet baskets.

Visitor Experience

Visitors enter the Snee Farm building and first encounter a tactile exhibit map and an introduction exhibit element directing visitors to start the main exhibit experience. The three Main Rooms can be understood separately and visitors may explore the rooms in the order which appeals to them. Each of these three main rooms contains a center exhibit structure designed to draw visitors in and provide an introduction to the room’s main theme. The backside of these structures delivers more detailed interpretation and push visitors to question their own assumptions about our nation’s founding document. Thematic reader rails spanning the main walls of the exhibit spaces provide additional high-level interpretation visually, as well as more detailed interpretive text, imagery, and artifacts. Exhibit areas also contain a facilitated dialogue station centered around the current fire places in each room, allowing for visitors to take time to reflect further on the materials they learned and provide an interactive experience which can encourage visitors to future action. The exhibit space located in the Ranger Station room provides an overview timeline of the Site’s history and a central orientation map of the entire site. This could serve as a location where rangers could encourage further exploration outside, as well as provide a more chronological understanding to the exhibit content.

ALTERNATIVE C  
SOUTHERN SUPPORT: PINCKNEY’S  
PLAN AND THE CONSTITUTION

THE BIG IDEA

The unique Southern perspectives and influences which informed our nation’s founding and principles of the Constitution created an enduring legacy that continues to shape America.

VISITOR OUTCOMES

The Constitution is still evolving, the story continues.

How do I contribute to these ideas today?

The founders of the nation include more than just the “great men.”

SPACE PLANNING & EXHIBIT FLOW

Center exhibit structures in each Main Room serve as orientation and introduction interpretive pieces.

An open floorplan encourages a non-linear exploration of the exhibits.

DESIGN APPROACHES

Intro exhibit structures are designed to highlight the contrast between what visitors might expect when learning about the Constitution and the events and people not typically thought of which influenced it.

Stylized reader rails running along the main walls include tactile representations of key plants and agricultural tools used to help support the creation of a new nation.

Exhibit elements encourage further dialogue and reflection on how these rights and issues are still debated in different ways.

PROJECT:

Charles Pinckney National Historic Site, Snee Farm House  
Exhibit Planning and Design

PHASE:

Schematic Design I  
July 24, 2019

SCALE:

Scale = N. A.

DRAWINGS:

Alternative C: Exhibit Narrative



# SOUTHERN SUPPORT: PINCKNEY'S PLAN AND THE CONSTITUTION

Article III. The judicial Power of the United States, shall be vested in one supreme Court, and in such inferior Courts as the Congress may from time to time ordain and establish. The Judges, both of the supreme and inferior Courts, shall hold their Offices during good Behaviour, and shall, at stated Times, receive for their Services a Compensation, which shall neither be increased nor diminished during their Continuance in Office.

Section 1. The President shall be Commander in Chief of the Army and Navy of the United States, and of the Militia of the several States, and shall execute the actual Powers of the Executive Office, he may require the Opinion, in Writing of the principal Officers in each of the executive Departments, upon any subject relating to the Duties of their respective Offices, and he shall have Power to grant Reprieves and Pardons for Offences against the United States, except in Cases of Impeachment.

Section 2. The President shall have Power to grant with the Advice and Consent of the Senate, to make Treaties, provided two thirds of the Senators present concur, and he shall nominate, and by and with the Advice and Consent of the Senate, shall appoint Ambassadors, other public Ministers and Consuls, Judges of the supreme Court, and all other Officers of the United States, whose Appointments are not herein otherwise provided for, and which shall be established by Law; but the Congress may by Law vest the Appointment of such inferior Officers, as they think proper, in the President alone, in the Courts, or in the Heads of Departments.

Section 3. The President shall have Power to fill up all Vacancies that may happen during the Absence of Senators, by granting Commissions, which shall expire at the End of their next Session.

Section 4. The President shall have Power to grant Pardon, and to remove from Office, on Impeachment, for and Conviction, any Person, except Judges, and other Officers of the United States.

Article III. The judicial Power of the United States, shall be vested in one supreme Court, and in such inferior Courts as the Congress may from time to time ordain and establish. The Judges, both of the supreme and inferior Courts, shall hold their Offices during good Behaviour, and shall, at stated Times, receive for their Services a Compensation, which shall neither be increased nor diminished during their Continuance in Office.

Section 1. The President shall be Commander in Chief of the Army and Navy of the United States, and of the Militia of the several States, and shall execute the actual Powers of the Executive Office, he may require the Opinion, in Writing of the principal Officers in each of the executive Departments, upon any subject relating to the Duties of their respective Offices, and he shall have Power to grant Reprieves and Pardons for Offences against the United States, except in Cases of Impeachment.

Section 2. The President shall have Power to grant with the Advice and Consent of the Senate, to make Treaties, provided two thirds of the Senators present concur, and he shall nominate, and by and with the Advice and Consent of the Senate, shall appoint Ambassadors, other public Ministers and Consuls, Judges of the supreme Court, and all other Officers of the United States, whose Appointments are not herein otherwise provided for, and which shall be established by Law; but the Congress may by Law vest the Appointment of such inferior Officers, as they think proper, in the President alone, in the Courts, or in the Heads of Departments.

Section 3. The President shall have Power to fill up all Vacancies that may happen during the Absence of Senators, by granting Commissions, which shall expire at the End of their next Session.

Section 4. The President shall have Power to grant Pardon, and to remove from Office, on Impeachment, for and Conviction, any Person, except Judges, and other Officers of the United States.

Article IV. The executive Power shall be vested in the President of the United States. He shall hold his Office during the Term of Years, which the Congress may by Law determine, and he shall be eligible for one or more Terms, which the Congress may by Law determine. He shall, at stated Times, receive for his Services a Compensation, which shall neither be increased nor diminished during his Continuance in Office.

Section 1. The President shall be Commander in Chief of the Army and Navy of the United States, and of the Militia of the several States, and shall execute the actual Powers of the Executive Office, he may require the Opinion, in Writing of the principal Officers in each of the executive Departments, upon any subject relating to the Duties of their respective Offices, and he shall have Power to grant Reprieves and Pardons for Offences against the United States, except in Cases of Impeachment.

Section 2. The President shall have Power to grant with the Advice and Consent of the Senate, to make Treaties, provided two thirds of the Senators present concur, and he shall nominate, and by and with the Advice and Consent of the Senate, shall appoint Ambassadors, other public Ministers and Consuls, Judges of the supreme Court, and all other Officers of the United States, whose Appointments are not herein otherwise provided for, and which shall be established by Law; but the Congress may by Law vest the Appointment of such inferior Officers, as they think proper, in the President alone, in the Courts, or in the Heads of Departments.

Section 3. The President shall have Power to fill up all Vacancies that may happen during the Absence of Senators, by granting Commissions, which shall expire at the End of their next Session.

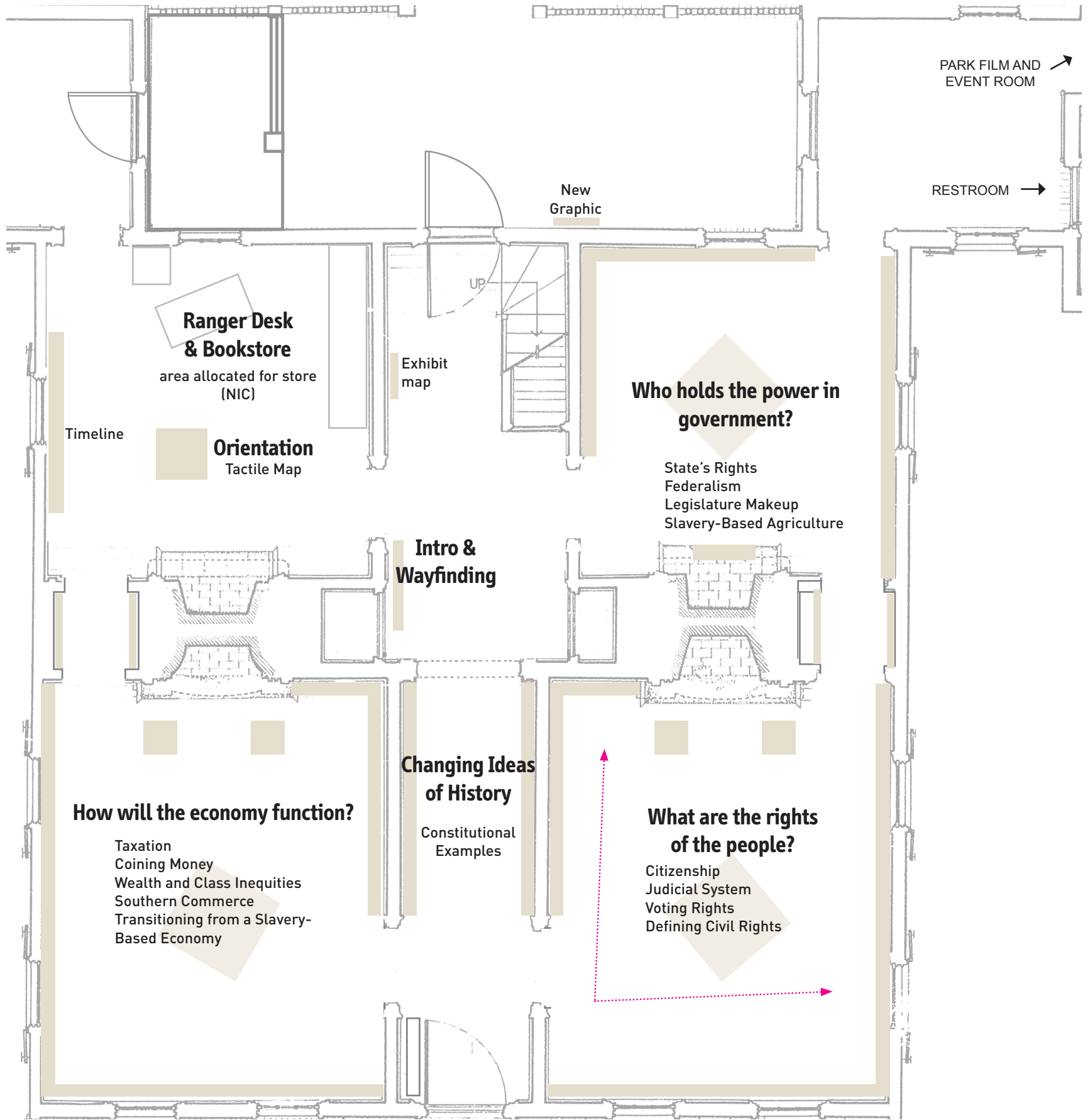
Section 4. The President shall have Power to grant Pardon, and to remove from Office, on Impeachment, for and Conviction, any Person, except Judges, and other Officers of the United States.

1 PLAN: ALT. C  
Scale: 3/16" = 1'-0"

0 1 2 3 4 5 6 7 8 9 10 FT

60" TWO-WAY VISITOR TRAFFIC AND WHEELCHAIR TURNAROUND

36" WHEELCHAIR CLEARANCE AND ONE-WAY TRAFFIC (32" MIN. AT PINCH POINTS)





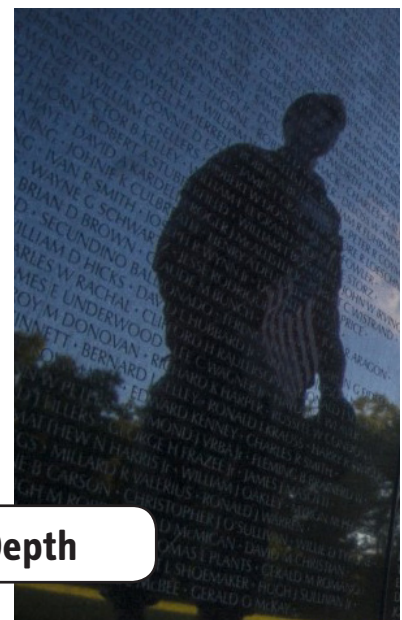
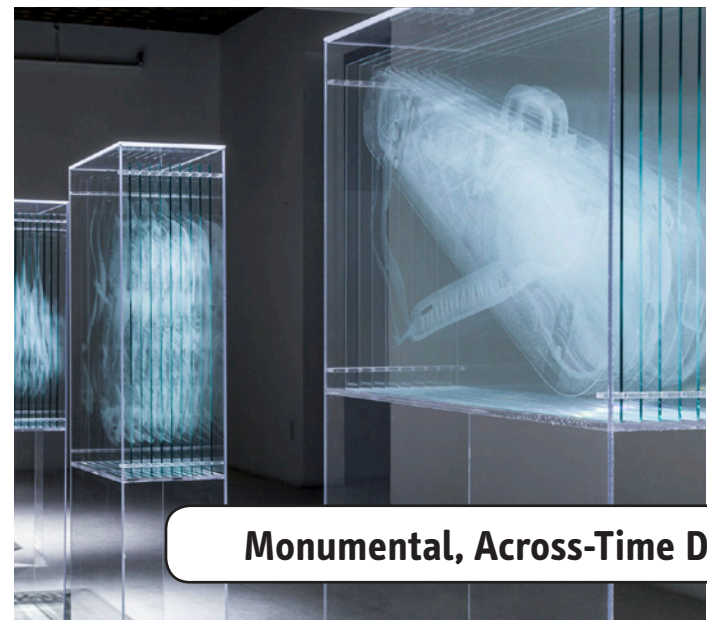
# SOUTHERN SUPPORT: PINCKNEY'S PLAN AND THE CONSTITUTION

and furnish Stores and Depots committed on the high seas, and officers against  
his grand Litters of Marque and Reprisal, and make Rules concerning Captives on  
support Armies, but no Appropriation of Money to that Use shall be for a longer  
and maintain a Navy;  
Rules for the Government and Regulation of the land and naval Forces;  
for calling forth the Militia to execute the Laws of the Union, suppress Insurrections  
or organizing, arming and disciplining, the Militia, and for governing such Part of  
or States respectively, the Appointment of the Officers, and the Authority of training the  
wherever Legislation in all Cases whatsoever, over such District (not exceeding ten Miles  
become the Seat of the Government of the United States, and to exercise like Author  
which the same shall be, for the Erection of Forts, Magazines, Armies, dock Yards, and  
Laws which shall be necessary and proper for carrying into Execution the foregoing  
of the United States, or in any Department or Officer thereof.  
Migration or Importation of such Persons as any of the States now existing shall  
thousand eight hundred and eight, but a Tax or duty may be imposed on such Impon  
of the Wind of Noebus Corpus shall not be suspended, unless when in Cases of Rebelli  
Attainder or ex post facto Law shall be passed.  
tion, or other direct Tax shall be laid, unless in Proportion to the Census and Enumera  
Duty shall be laid on Articles exported from any

Constitutional  
Contributions

Cultural  
Contrast

Southern Perspectives



Monumental, Across-Time Depth



Support



powerful,



**SOUTHERN SUPPORT:  
PINCKNEY'S PLAN AND THE CONSTITUTION****This View:**

How was the founding document of our nation influenced by agricultural leaders and workers in the South? How did the experiences of enslavement and participation in the international slave trade inform decisions at the Constitutional Convention? How are these influences still felt and understood today? This exhibit focuses on answering these key questions and further pushes visitors to question their own understandings and beliefs regarding the crafting of the Constitution.

As visitors enter this main exhibit space, they are immediately drawn to the Intro Exhibit Structures highlighting a key thematic question relating Pinckney's Plan; in this case: What are the rights of the people? The backside of the structure includes imagery depicting enslaved persons on a farm, perhaps juxtaposed with other laborers who also had to fight for their rights. The leading question will focus the room, with each sub and main panel located along the reader rails highlighting specific aspects of Pinckney's Plan and exploring Americans' understanding of those concepts over time. These reader rails are supported visually by agricultural tools and plants which link the idea that these ideas and debates were enabled and shaped by the hard work of enslaved persons, other laborers, and people traditionally not considered founders of our nation.

Text includes a focus on how these ideals evolved throughout American history and interpretative questions encourage visitors to further debate the need or basis of these ideas in today's context. Fireside chat spaces contain facilitated dialogues relating to the content of the room and put the visitor into the historical context of one of these rights debates. These allow additional time for content reflection and a space for visitors who are serving as facilitators for their group to discuss the in more detail.

**PROJECT:**

Charles Pinckney National Historic Site, Snee Farm House  
Exhibit Planning and Design

**PHASE:**

Schematic Design I  
July 24, 2019

**SCALE:**

Scale = N. A.

**DRAWINGS:**

Alternative C: Conceptual Rendering

OVERVIEW OF DESIGN ALTERNATIVES

ALTERNATIVE A FORGOTTEN FOUNDERS: PINCKNEY AND THE GLOBAL COMMUNITY AT SNEE FARM
THE BIG IDEA
The story of Snee Farm is a global story influenced by people of multiple nations and backgrounds who lived and worked at this farm, transformed the region, and built America.
VISITOR OUTCOMES
Agricultural demands and global events affected this area’s development and life at Snee Farm.
Everything is connected: ideas and events in South Carolina influenced global movements and vice versa.
I feel connected to this place and proud as an American.
SPACE PLANNING & EXHIBIT FLOW
Interpretive exhibits are located within the existing exhibit rooms.
An open floor plan with thematic groupings enables visitors to explore the exhibits in any order they choose.
A feedback station located in the bookstore makes it an ideal place to encourage further exploration outside.
DESIGN APPROACHES
Color schemes and design are inspired by historic maps and the various cultures are represented, including the Gullah Geechee, European-Americans, and Native Americans.
Large maps draw visitors into exhibit areas and provide high-level interpretation that sets the tone of the room.
Inset artifact cases connect the items with the story.

ALTERNATIVE B LOWCOUNTRY ROOTS: FORGING A NEW AMERICAN IDENTITY
THE BIG IDEA
The founders of our nation forged a unique American identity, influenced by Southern ideas and experiences exemplified at Snee Farm, and created a lasting legacy of democracy, ingenuity, inequity, and resilience that continues today.
VISITOR OUTCOMES
Southern ideas and society greatly influenced the nation’s founding.
Individuals at Snee Farm and Gullah Geechee people fought inequality and created a legacy of resilience.
There are real, diverse stories of people here.
SPACE PLANNING & EXHIBIT FLOW
An orientation space in the northeast Main Room provides an in-depth timeline of events at Snee Farm and helps orient visitors to the story.
The East Passageway is repurposed as a double-sided exhibit case, encouraging visitors to walk through the main Hallway to experience the soundscape element.
Central structures in each room create an open floor-plan to be explored.
DESIGN APPROACHES
Floor graphics, overhanging titles, and immersive, scenic elements lead visitors through the exhibits and tie to each topic.
Exhibit structures and panels are designed to appear flowing and flag-like and are combined with strong colors to reinforce a sense of identity.
People-focused stories woven throughout the narrative and via people panels help visitors connect with the exhibits.

ALTERNATIVE C SOUTHERN SUPPORT: PINCKNEY’S PLAN AND THE CONSTITUTION
THE BIG IDEA
The unique Southern perspectives and influences which informed our nation’s founding and principles of the Constitution created an enduring legacy that continues to shape America.
VISITOR OUTCOMES
The Constitution is still evolving, the story continues.
How do I contribute to these ideas today?
The founders of the nation include more than just the “great men.”
SPACE PLANNING & EXHIBIT FLOW
Center exhibit structures in each Main Room serve as orientation and introduction interpretive pieces.
An open floorplan encourages a non-linear exploration of the exhibits.
DESIGN APPROACHES
Intro exhibit structures are designed to highlight the contrast between what visitors might expect when learning about the Constitution and the events and people not typically thought of which influenced it.
Stylized reader rails running along the main walls include tactile representations of key plants and agricultural tools used to help support the creation of a new nation.
Exhibit elements encourage further dialogue and reflection on how these rights and issues are still debated in different ways.



UNIVERSAL DESIGN

The Schematic Design I Package provides universal design concepts that allow visitors of all ages and abilities to experience the exhibits. Using a variety of design approaches, mechanical and tactile interactives, and assistive technology, we ensure that the exhibit’s goals and themes will be accomplished for any visitor with disabilities.

The chosen design alternative, which will be developed for the Schematic Design II presentation, will ensure all relevant laws, including the Architectural Barriers Act and Sections 504 and 508 of the Rehabilitation Act, are followed.

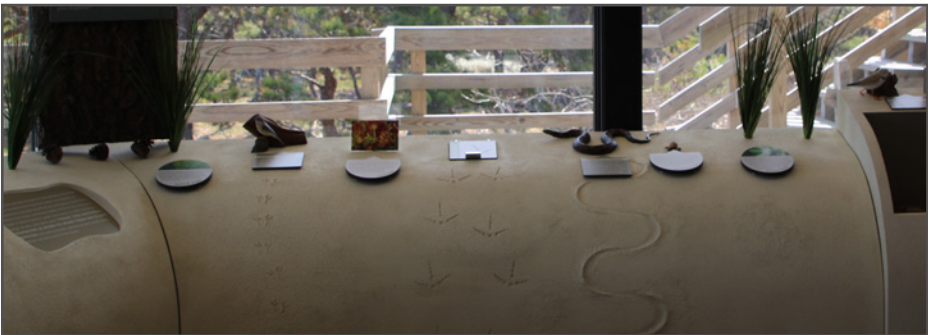
Each alternative in this package ensures that exhibit components are accessible to all visitors, with accessible routes into, within, and out of the exhibits.

Using the principles of universal design, our plans incorporate exhibit elements that appeal to all of the senses: touch, sight, sound, and smell. All mechanical interactives will adhere to requirements for heights, reach ranges, weight, and required force to operate.

A full accessibility report will be provided during the Schematic Design II phase, but planning for universal design should take place early in the process. As we develop a single approach to the visitor center, the principals outlined here will remain front and center. Note that a combination of these interactive elements maybe used or swapped between design alternatives, however, this list is not intended to be comprehensive of all interactives for future exhibits.

TOUCH

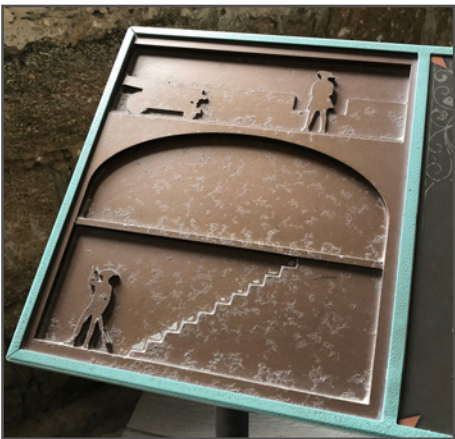
- Tactile maps
- Models of agriculutral tools
- Rice trunk
- Bas relief historic images
- Flip-doors
- Indigo, rice, and other plants



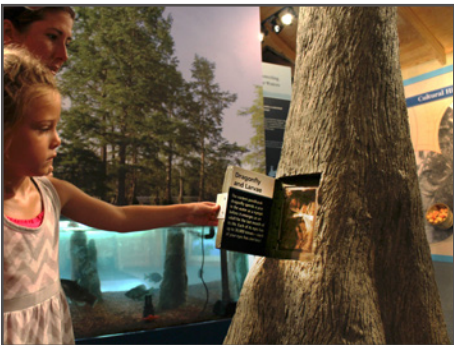
Tactile environments and models



Tactile furs



Details in relief



Flip doors with tactiles



Tactile animals

HEAR

- Oral histories
- Mosquitoes buzz
- Hnynms and work songs
- Agriculutral work, tools
- Historical debates



Focused Array Speakers



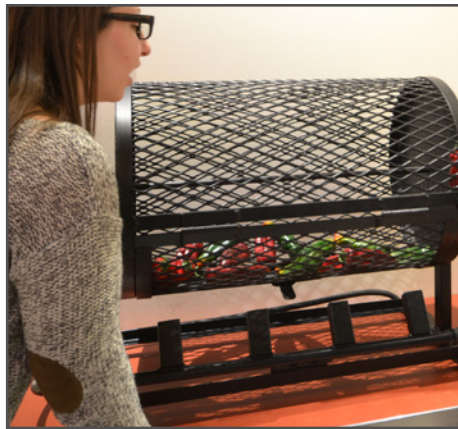
Audio player w/ speaker, sounds activated when box lid is opened



Audio handsets, first person accounts

SMELL

- Rice
- Indigo
- River smells
- Pluff mud
- Fresh-cut lumber



Scent Canisters



Slide panels open to release smells

PROJECT:

Charles Pinckney National Historic Site, Sneer Farm House  
Exhibit Planning and Design

PHASE:

Schematic Design I  
July 24, 2019

SCALE:

Scale = N. A.

DRAWINGS:

Universal Design



KEY ARTIFACTS

During the project Kick-Off meeting, the TDM team had the opportunity to tour the Charles Pinckney collections facilities and examine potential artifacts for use in the upcoming exhibits. The following items were identified as possible key artifacts to be used in one of or multiple of the design alternatives presented in the Schematic Design I Package. Note: Some of these artifacts will need further research or clarifying information for use in exhibits.



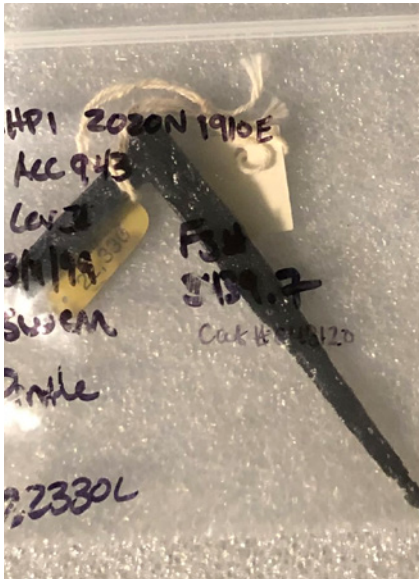
COINS/MONEY - Wealth, international reach, power, trade, freedom (CHPI 10039, 10059, 24362, 31286, et al.)



PINCKNEY WINE SEAL- Production, wealth, trade, labor (CHPI 11030, 3595)



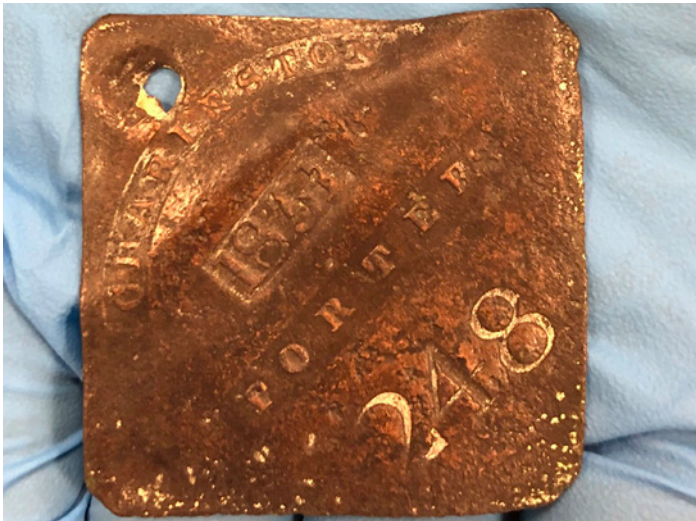
PINCKNEY SILVER SPOONS - Wealth, power, presence (CHPI 11325)



NAILS/BUILDING MATERIALS- Ingenuity, craftsmanship/metalwork, labor, tools (CHPI 943, 2020, 20626, 18813, 7535, 00352)



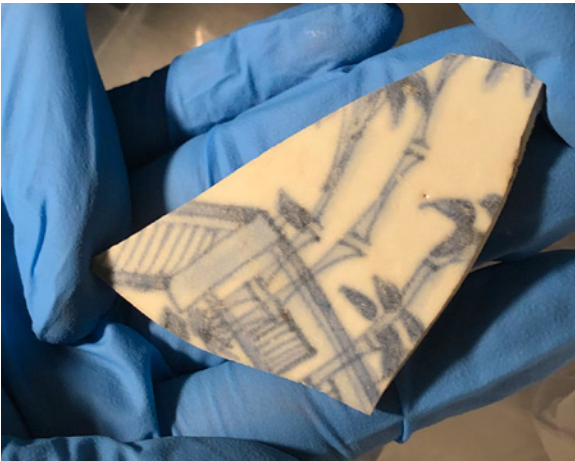
BUTTONS - Trade, ingenuity, functionality, tools, wealth (CHPI 3302, 3308, 11443, 10040, et al.)



SLAVE TAG - Oppression, labor, lack of freedom, power (CHPI 5200)



BEADS/PIPES/ETC- Wealth, cultural retention, individuality, freedom (CHPI 4944, 8224, 9857, 9783, et al.)



POTTERY/CERAMICS- Wealth, trade, craftsmanship (CHPI 4944, 50944, 50943, 8224, 9857, 9783, et al.)



Additional Possible Artifacts for Use:

- Native American Items (CHPI 15789, 15887, 10037)
- Bones/Shells/Hunting and Food Remains (CHPI 2354, 2616, 3271, 3286)
- Bullets/Lead/Gun flint (CHPI 3278, 3701, 5752, 38449)
- Brass Printing Plate (CHPI 26030)

PROJECT:

Charles Pinckney National Historic Site, Snee Farm House  
Exhibit Planning and Design

PHASE:

Schematic Design I  
July 24, 2019

SCALE:

Scale = N. A.

DRAWINGS:

Key Artifacts



SCHEDULE AND NEXT STEPS

- After TDM’s presentation of the Schematic Design I and the community input from this meeting, the park will provide comments to TDM by September 6, 2019, within 45 days. These comments will be used to craft the preferred Design Alternative for Schematic Design II phase.
- Following the submittal of comments, TDM will schedule a follow-up conference call within a week with the park to discuss any outstanding issues or questions that remain.
- TDM will submit the Schematic Design II package by October 18, 2018.

	Project Phase	Due Date	Client Review
➔	3C. Schematic Design I Deliverables	Delivery to NPS- 7/24/2019	
	3.C. At Park Presentation / Stakeholders (Two 8-hr day)	7/30/2019- 7/31/2019	
	3C. Client Comments	9/6/2019	45 days
	3C. Conference call to discuss comments	Within a week of comments	
	3D. Schematic Design II Deliverables	Delivery to NPS- 10/18/2019	
	3D. Web Conference	10/25/2019	
	3D. Client Comments	11/15/2019	21 Days
	3D. Conference call to discuss comments	Within a week of comments	
	3E. Draft Design Development I Deliverables	Delivery to NPS- 1/31/2020	
	3E. Web Conference	2/7/2020	
	3E. Client Comments	2/21/2020	21 days
	3E. Conference call to discuss comments	Within a week of comments	
	3F. DD1 Comprehensive Deliverables	Delivery to NPS- 5/8/2020	
	3F. At Park Presentation / Stakeholders (Two 8-hr days)	Week of 5/18/2020	
	3F. Client Comments	6/23/2020	45 days
	3F. Conference call to discuss comments	Within a week of comments	
	3G. DDII Deliverables	Delivery to NPS- 8/26/2020	
	3E. Web Conference	9/2/2020	
	3G. Client Comments	9/16/2020	21 Days
	3G. Conference call to discuss comments	Within a week of comments	
	3H. Production Documents I Deliverables	Delivery to NPS- 10/9/2020	
	3H. Web Conference	10/14/2020	
	3H. Client Comments	11/2/2020	21 Days
	3H. Conference call to discuss comments	Within a week of comments	
	3I. Final Delivery PDII Deliverables	Delivery to NPS- 12/4/2020	
	3I. Web Conference	12/8/2020	
	Final Completion/Delivery	12/31/2020	