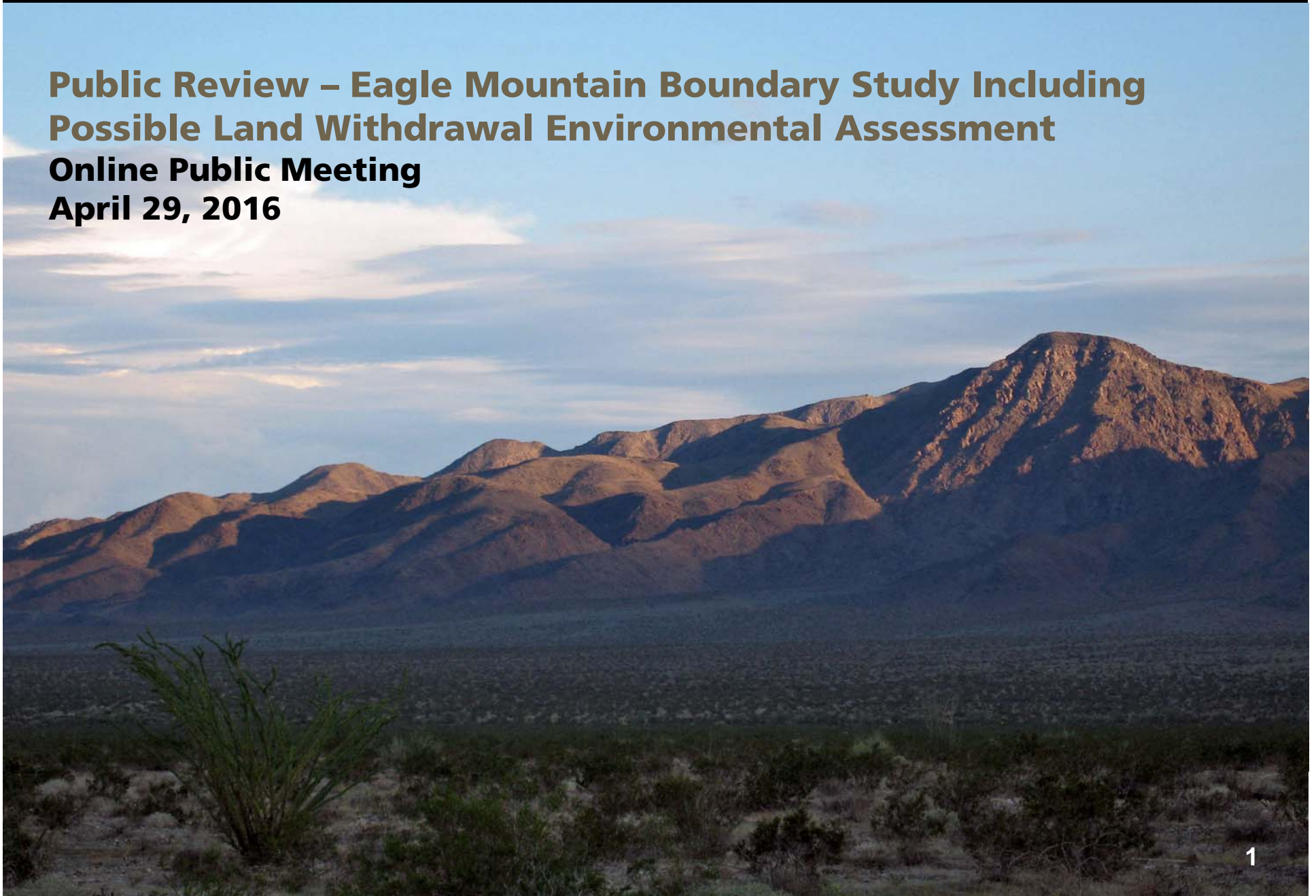




Public Review – Eagle Mountain Boundary Study Including Possible Land Withdrawal Environmental Assessment Online Public Meeting April 29, 2016





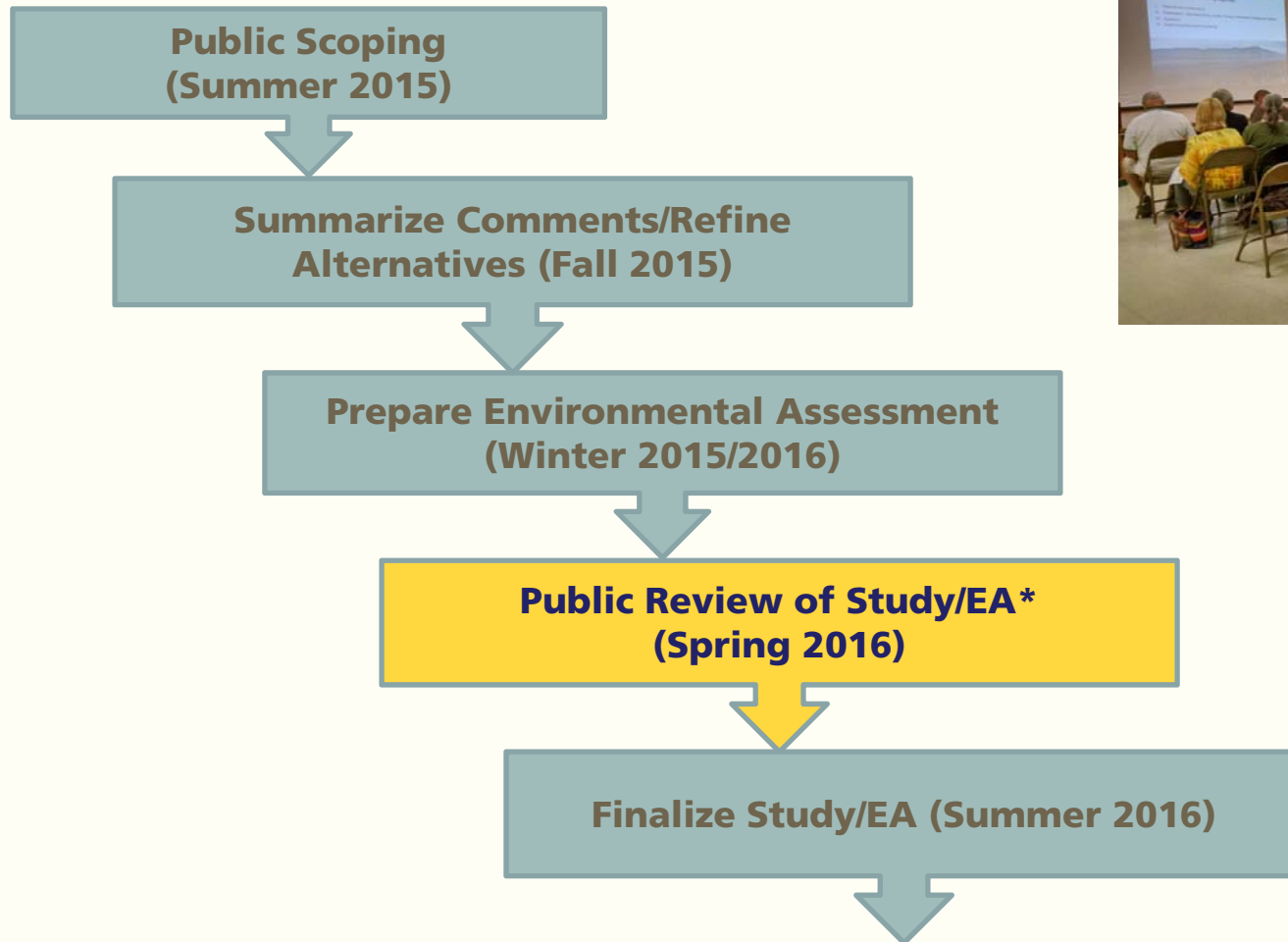
Meeting Agenda

- I. Welcome and Introductions
- II. Study Update Including Overview of Findings and Alternatives in the EA
- III. Questions and Comments





Boundary Study Process and Timeline



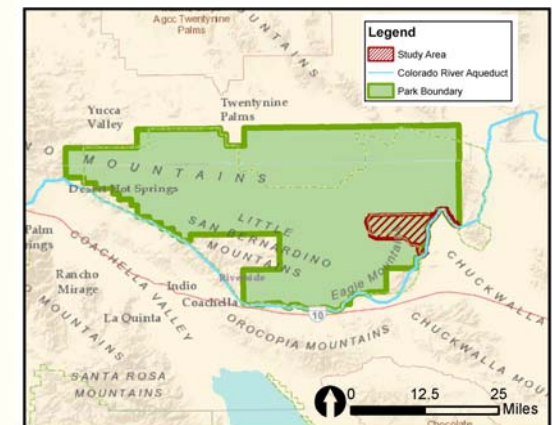
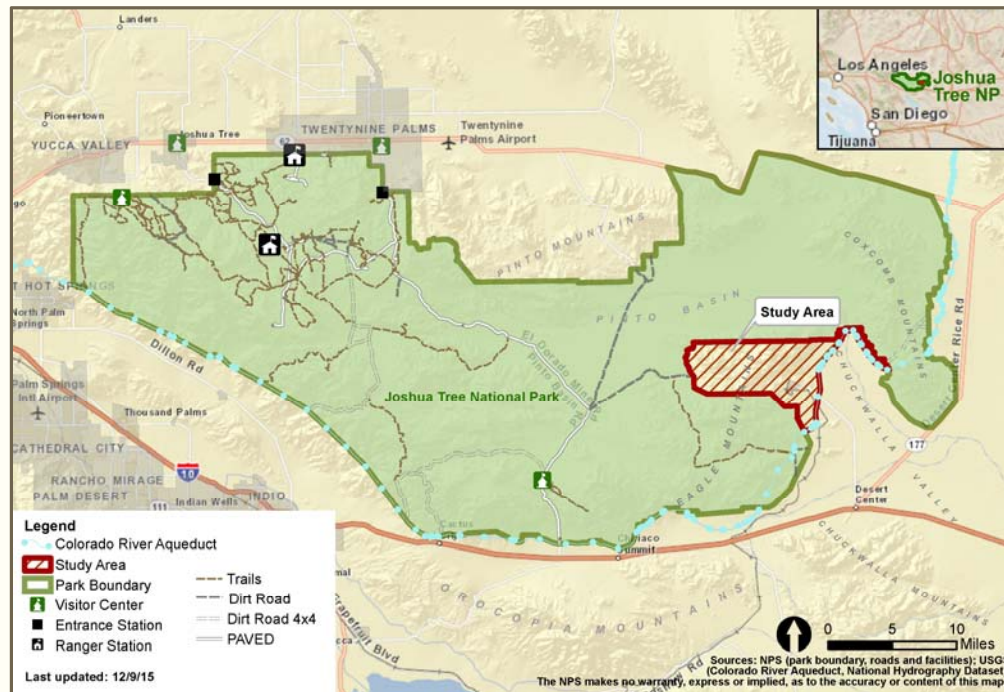
Eagle Mountain Boundary Study, Joshua Tree National Park

National Park Service
Department of the Interior



Purpose

- Evaluate feasibility of adding lands to Joshua Tree National Park
- Evaluates the potential effects of a withdrawal and transfer of jurisdiction of federal lands in the area from the BLM to the NPS ~22,500 acres



Park Boundary 1936

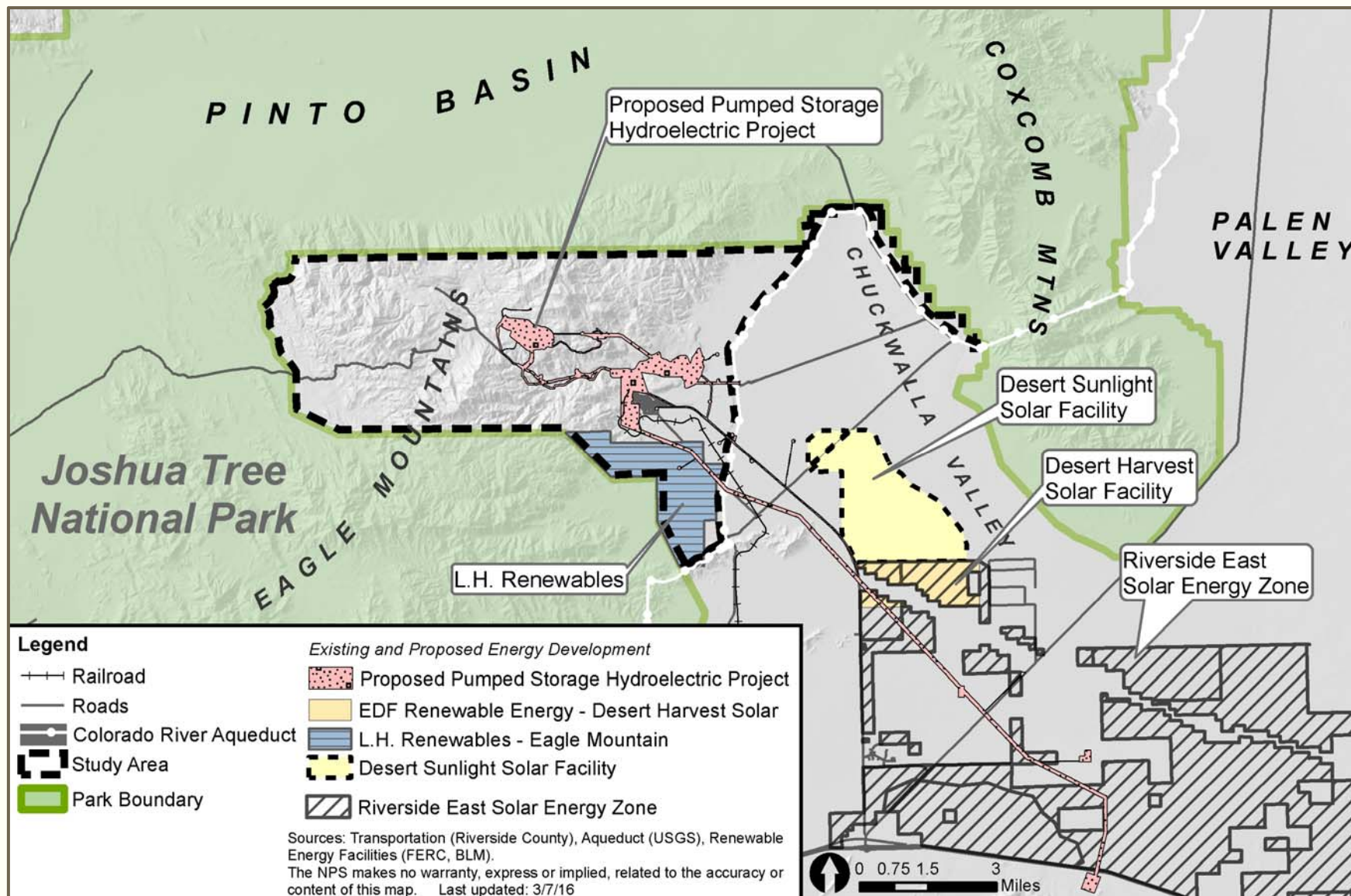


Park Boundary 1950



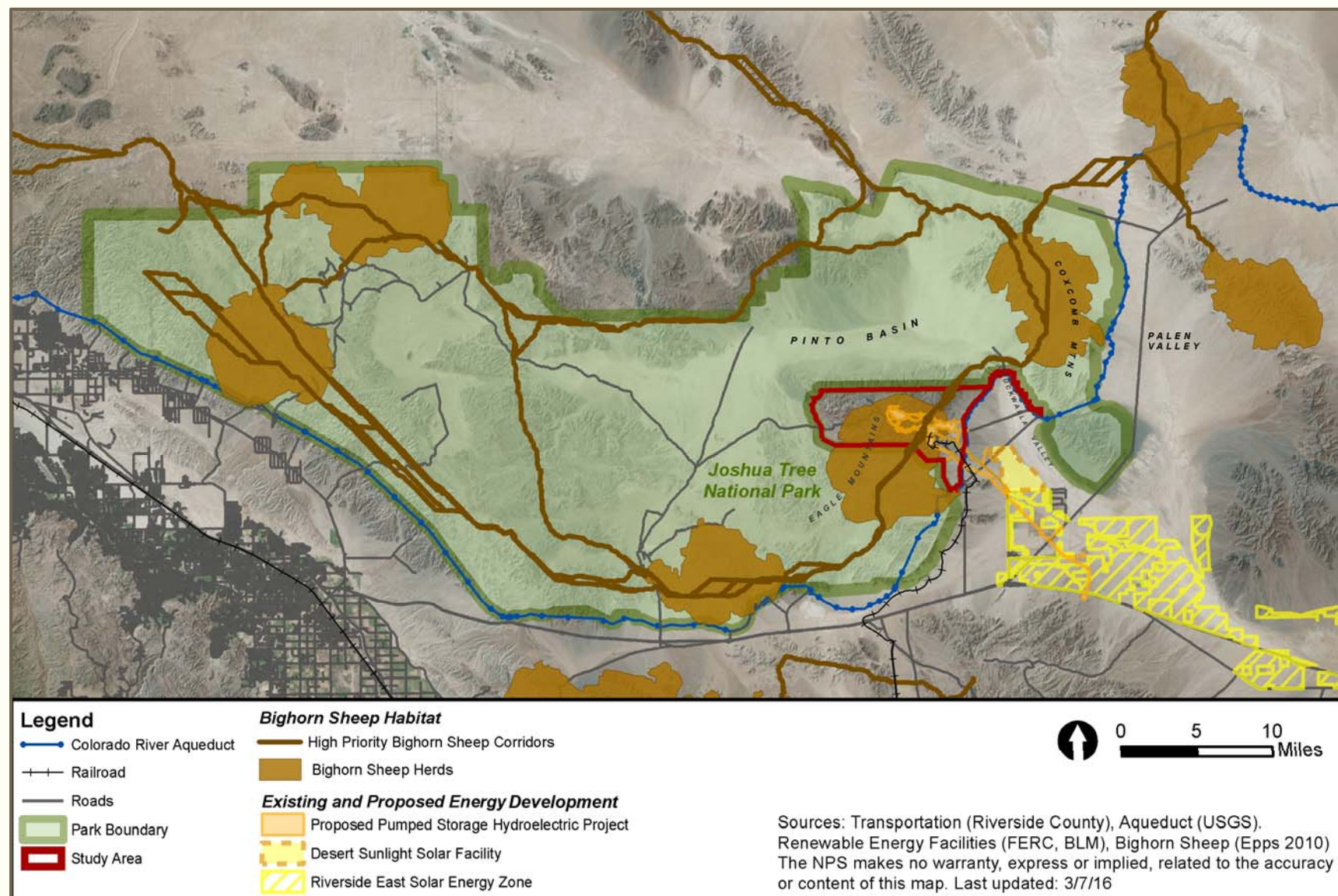
Background – Regional Development

Potential effects on park biodiversity, wilderness values, scenery



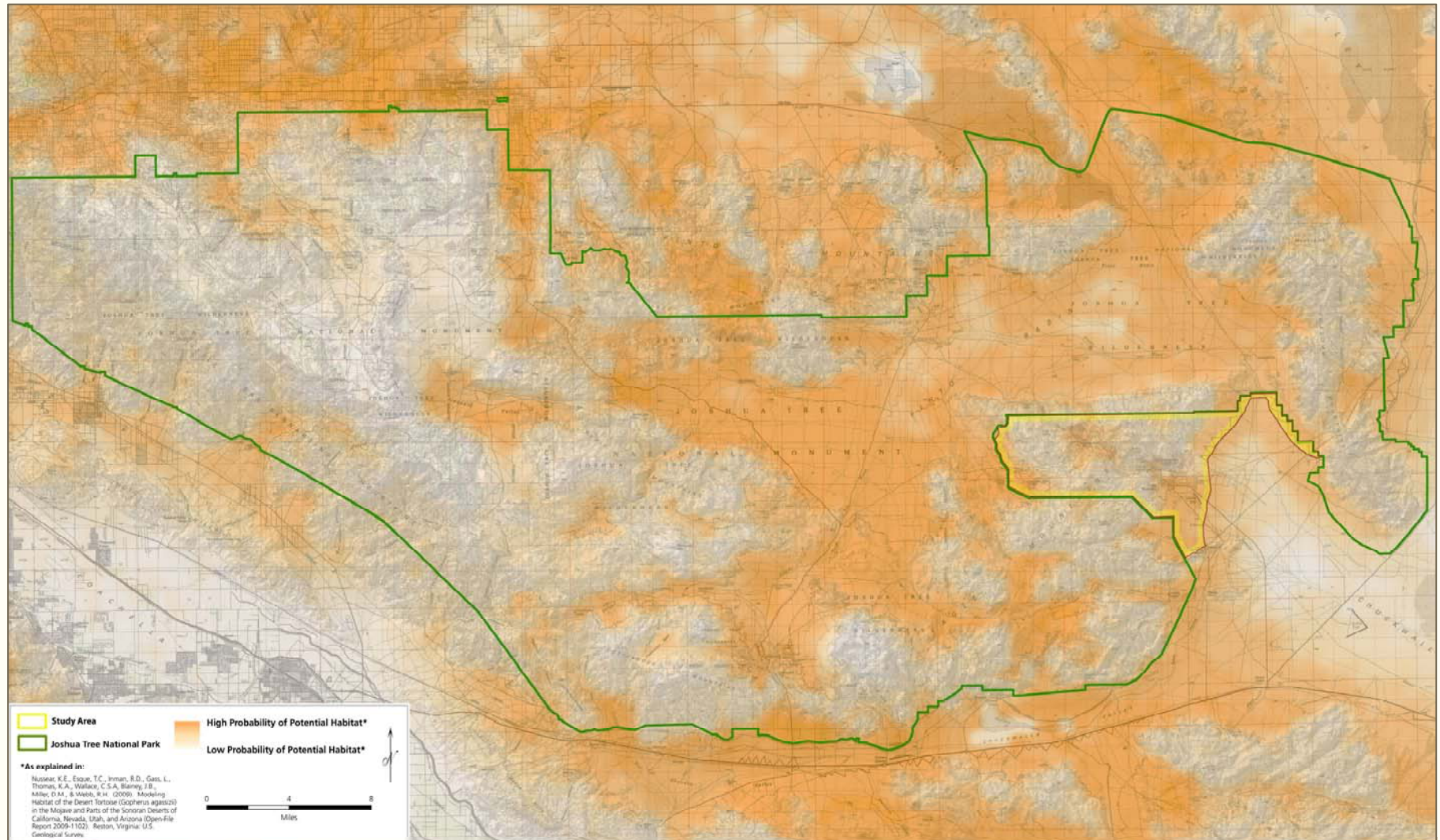


Habitat Connectivity – Desert Bighorn Sheep



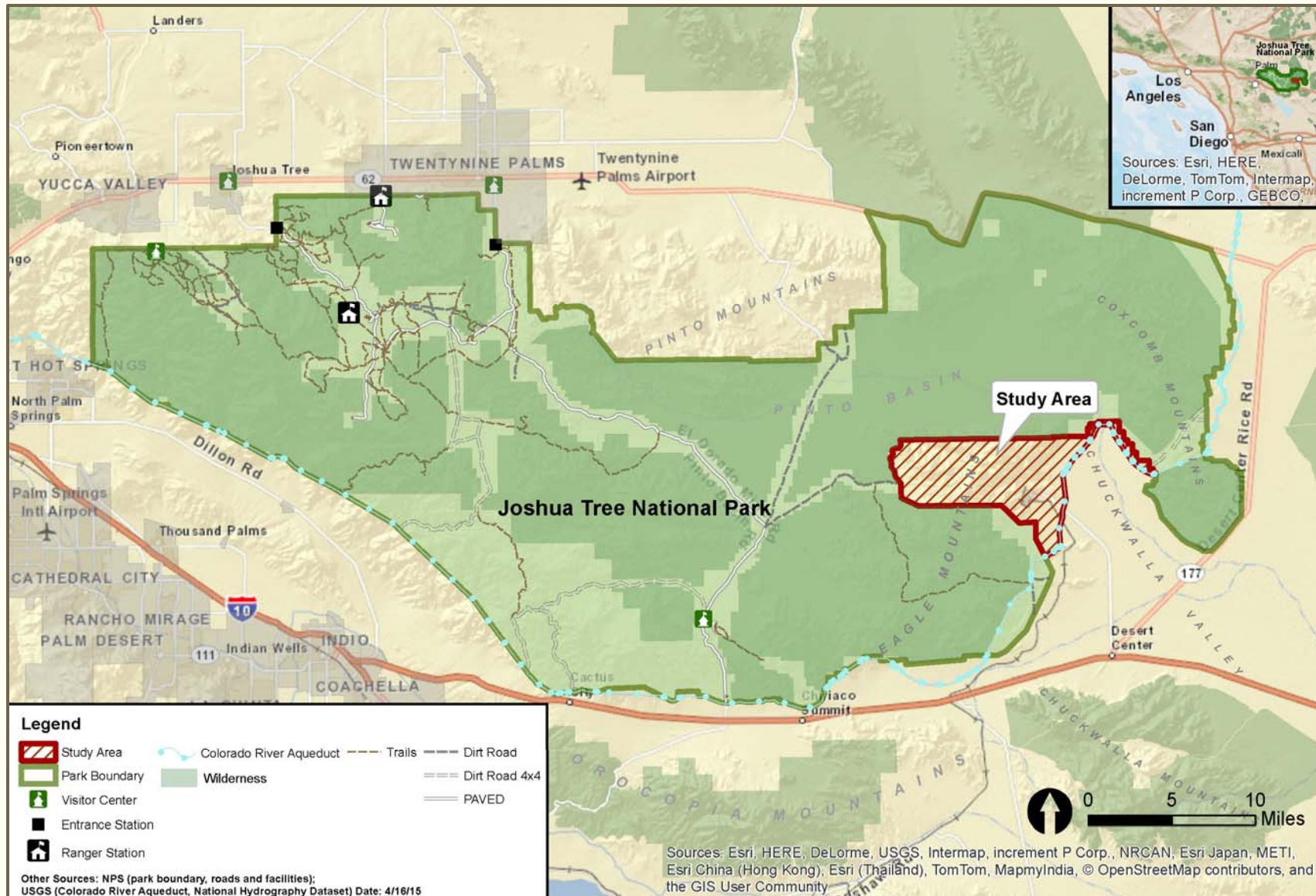


Habitat Connectivity – Desert Tortoise





Wilderness Values





Background – Cultural Resources



Ethnographic Resources/ Archeological Potential

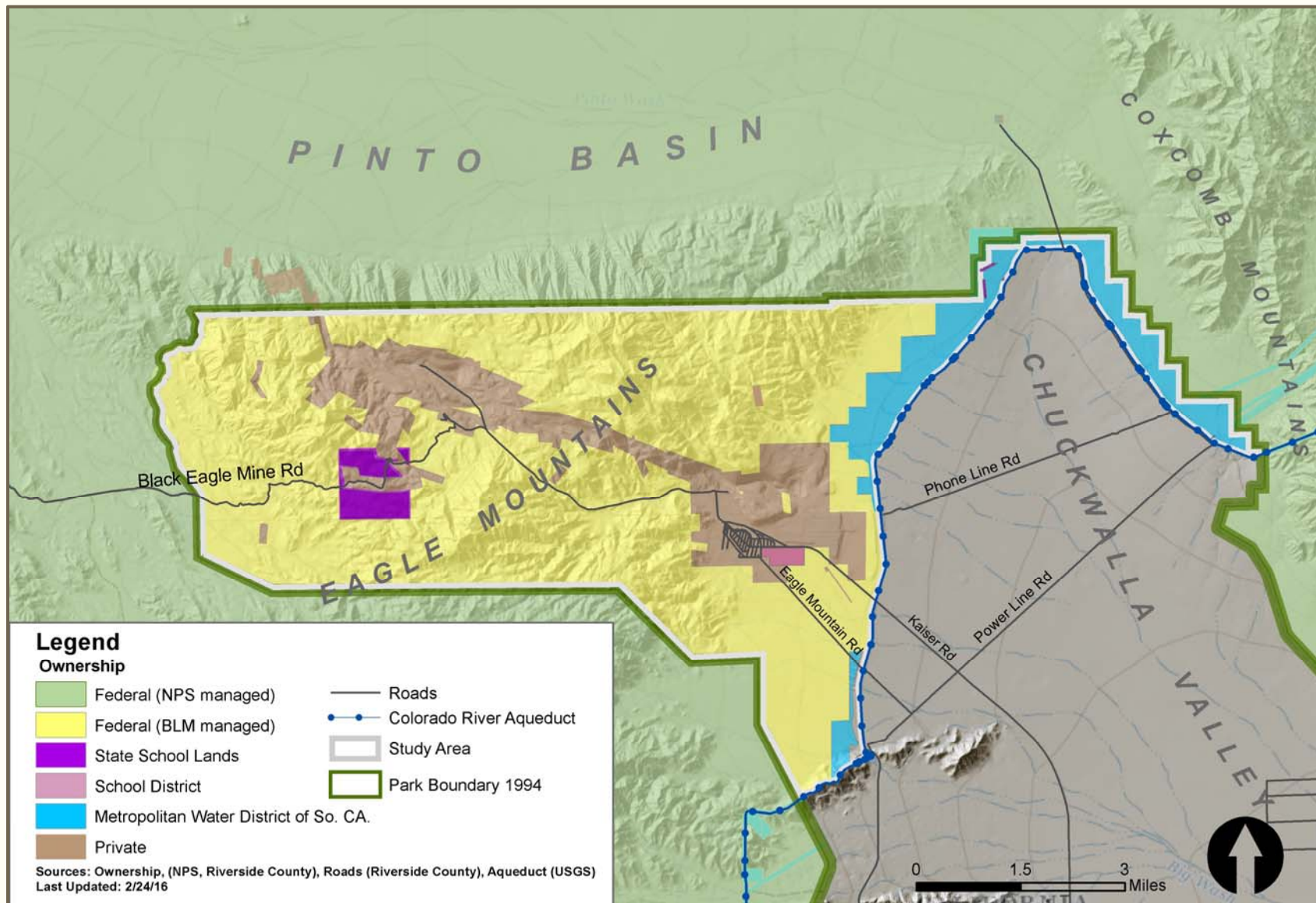


Eagle Mountain Mine and Townsite





Background – Current Ownership and Management



Eagle Mountain Boundary Study, Joshua Tree National Park

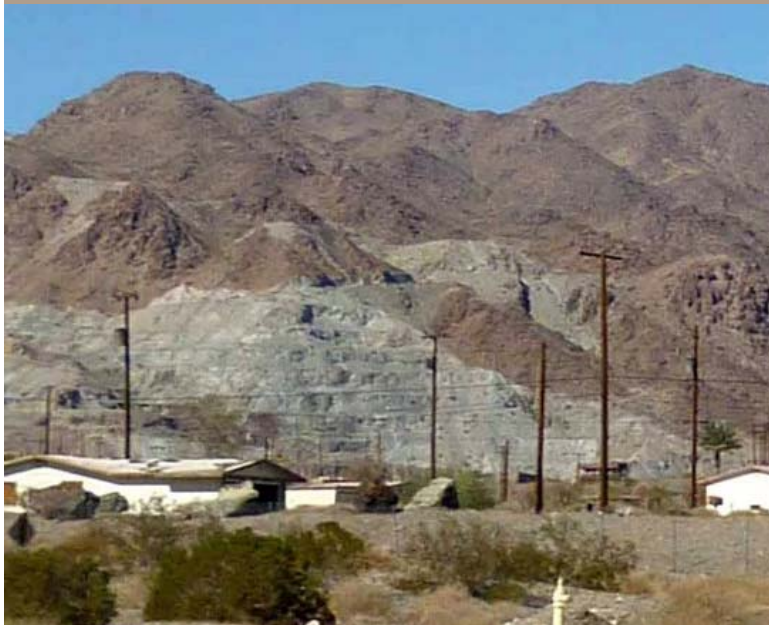
National Park Service
Department of the Interior



Bureau of Land Management Lands



Colorado River Aqueduct



Eagle Mountain Mine and Townsite





Scoping Comments – What We Heard



Support for resource protection and a broad boundary expansion



Consider effects on existing recreation & access



Consider effects on mining & mineral resources



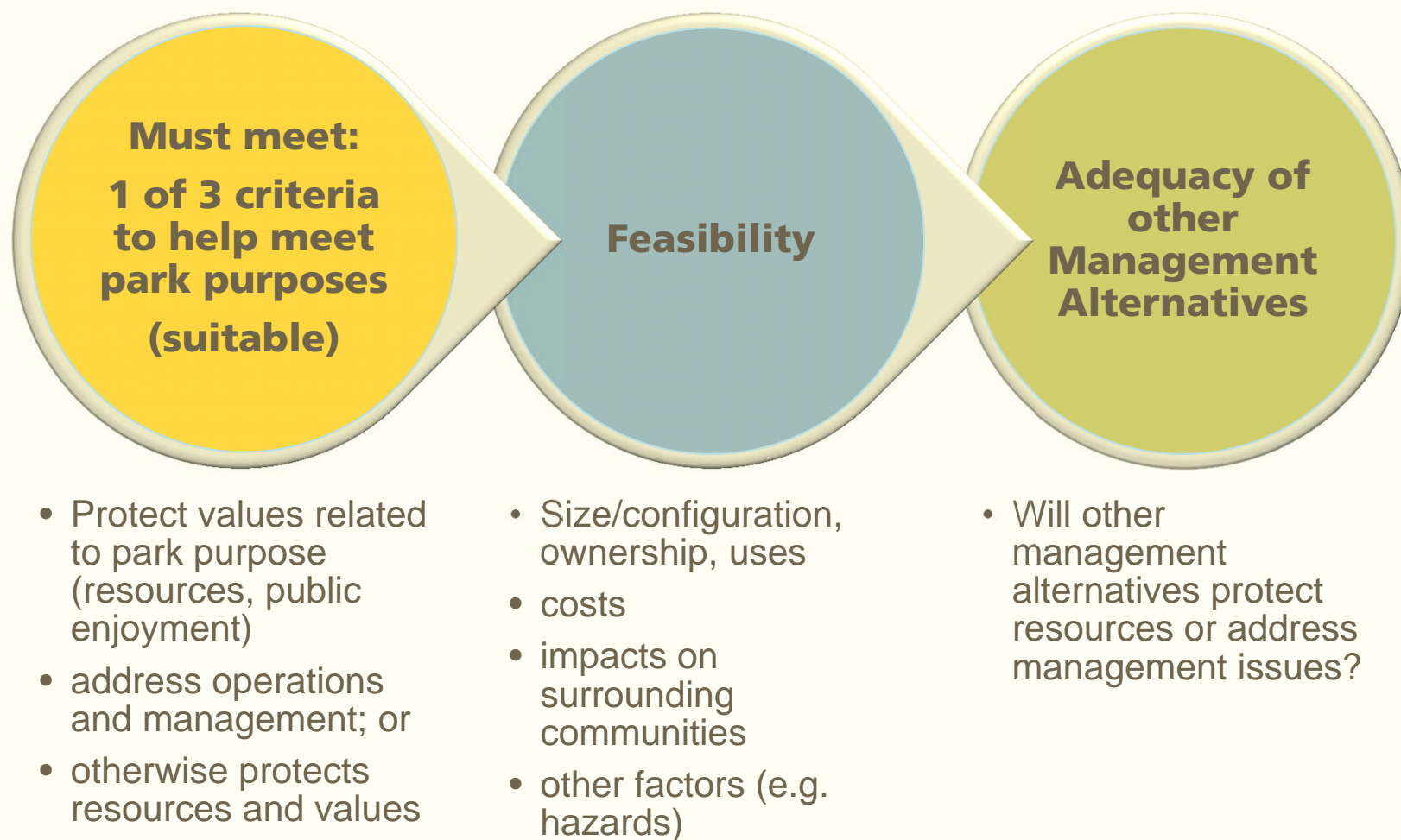
Information about reversionary interest in Eagle Mountain Townsite



Consider cumulative effects of development/energy projects



NPS Criteria for Expanding Park Boundaries





Initial Criteria Findings

- ✓ Yes – Including area in park would protect values related to park purpose
- ✓ Yes - Operational efficiency improved through better access, logical boundary



Habitat
Connectivity



Cultural
Resources



Ethnographic
Resources



Recreation
Opportunities/
Wilderness Values



Research
Opportunities



Improved Access
for Management

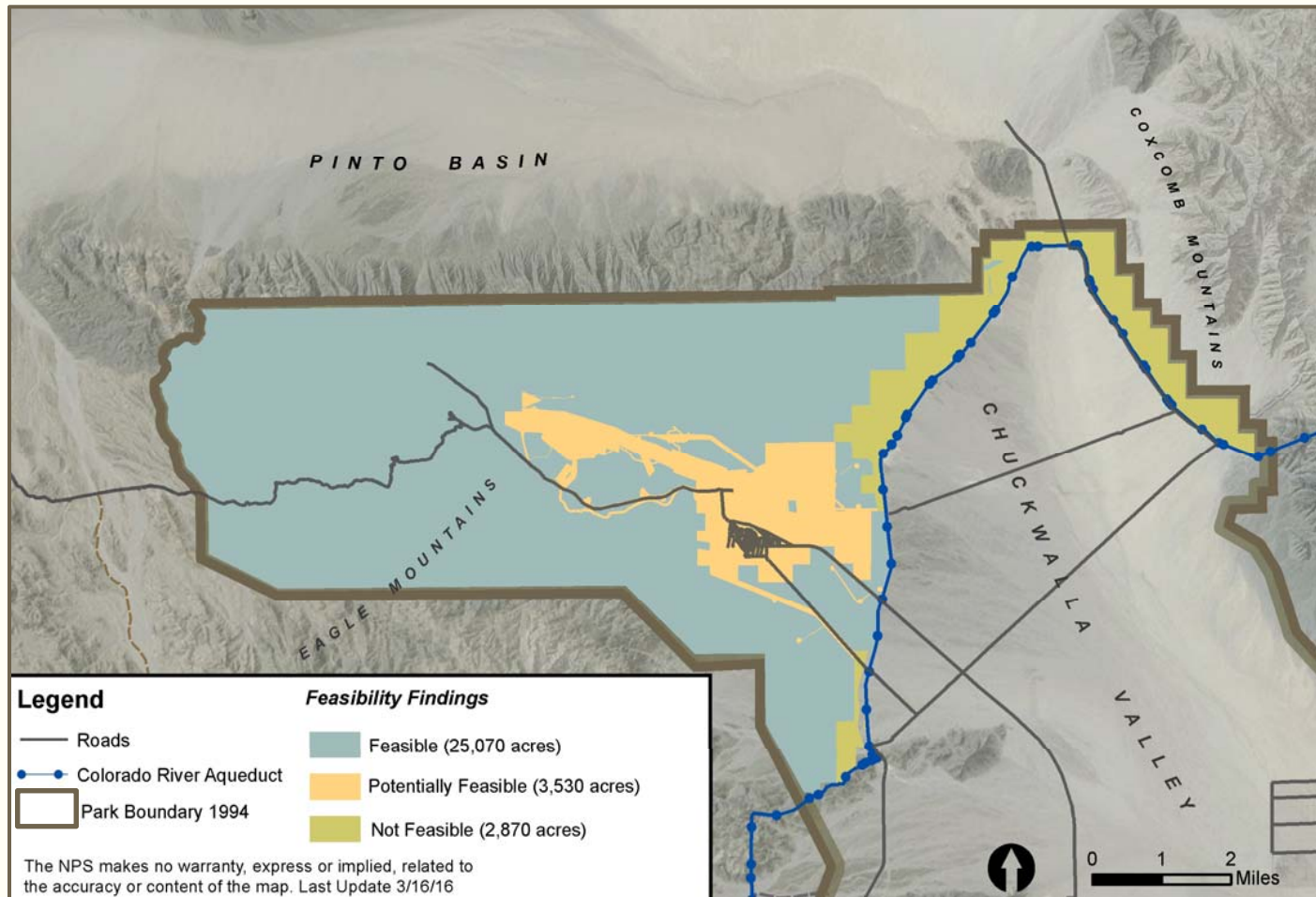


Interpretation
and Education



Feasibility Findings

- ✓ **Yes** - Over **25,000 acres** feasible for NPS to administer at this time
~3,500 acres *potentially* feasible.



Feasible =

- Federal lands
- State school lands and private lands (assuming willing seller/donation/exchange)

Potentially Feasible when current uses cease =

- Hydroelectric project licensed areas
- Townsite area and surrounding private lands

Not Feasible =

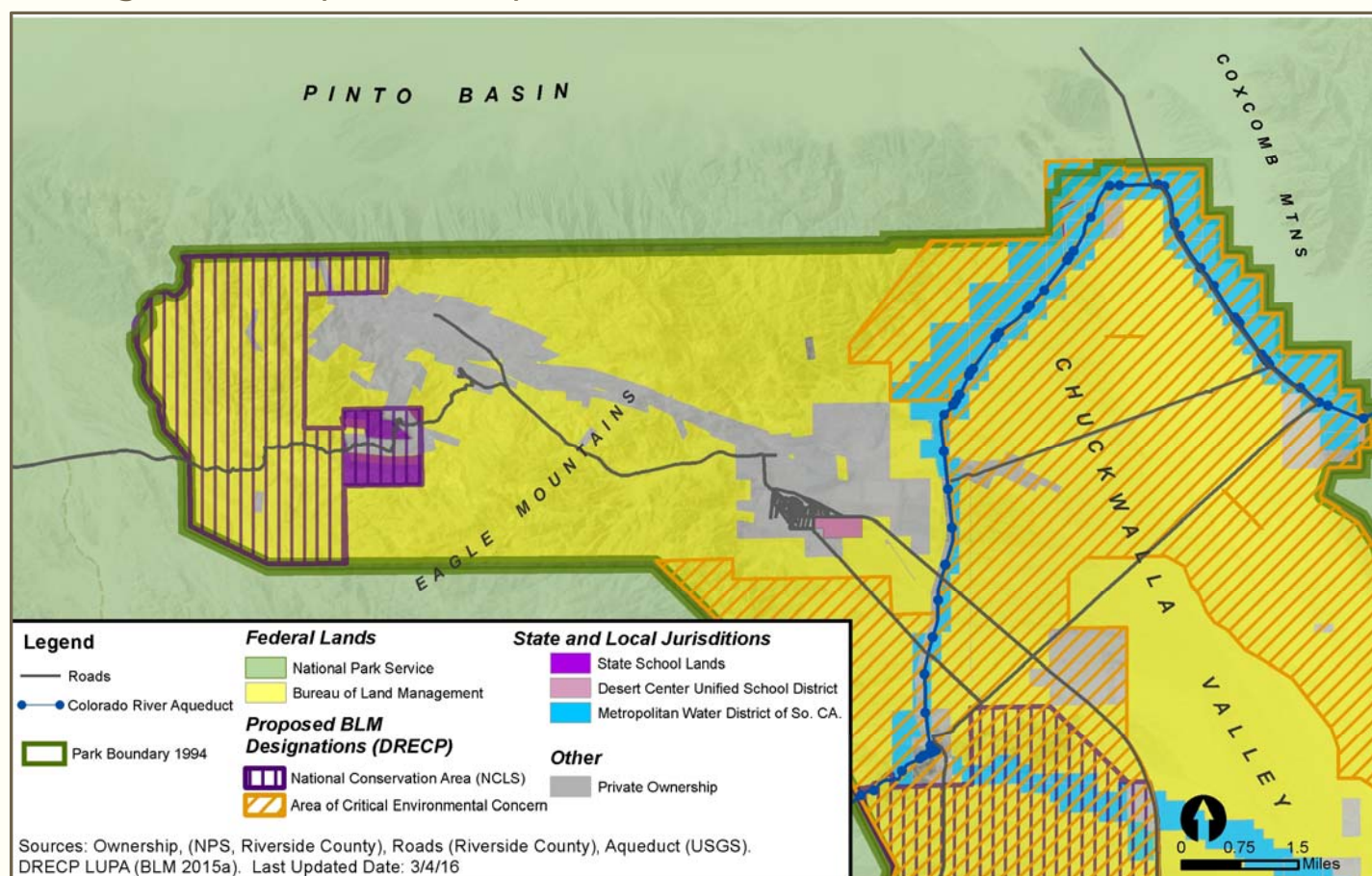
- Aqueduct lands



Adequacy of other Management Alternatives - Findings

Will other management alternatives protect resources or address management issues?

- ✓ Including lands within the Joshua Tree National Park boundary affords the best opportunity to provide long-term, comprehensive protection of the area and its resources.



The Desert Renewable Energy Conservation Plan proposes new conservation measures for federal lands in the area. However, more than half of the federal lands would continue to be available for resource intensive uses.



Alternatives Evaluated – Common Themes

- **Four alternatives are evaluated**
- **Implementation requires additional action**
 1. Administrative land transfer (segregation and withdrawal notice and application) or
 2. Congressional action
- **Existing rights not affected**

Prior withdrawals under public land laws, property and mineral rights, etc.

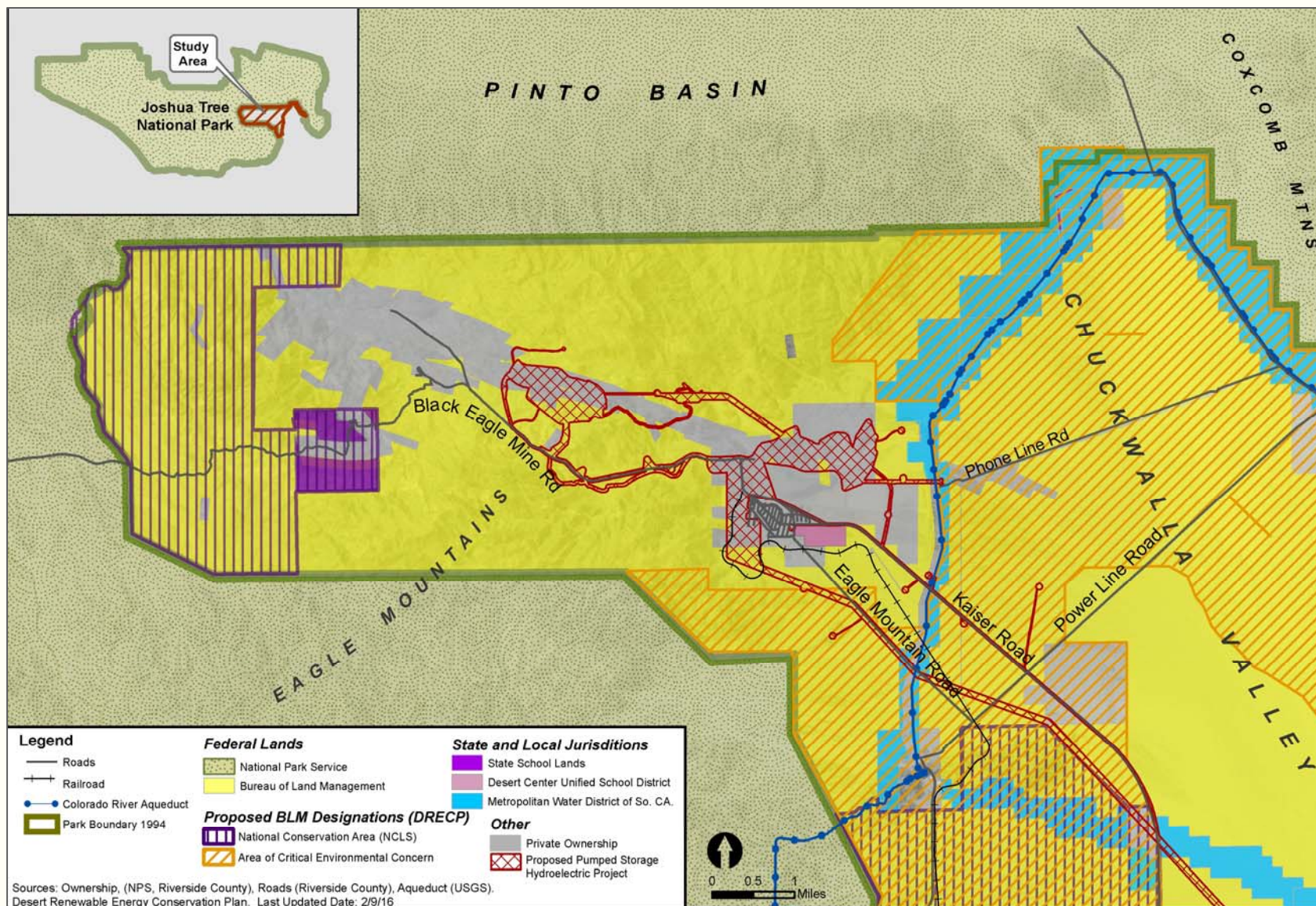


Eagle Mountain Boundary Study, Joshua Tree National Park

National Park Service
Department of the Interior



Alternative A: Continue Current Management (No Action)

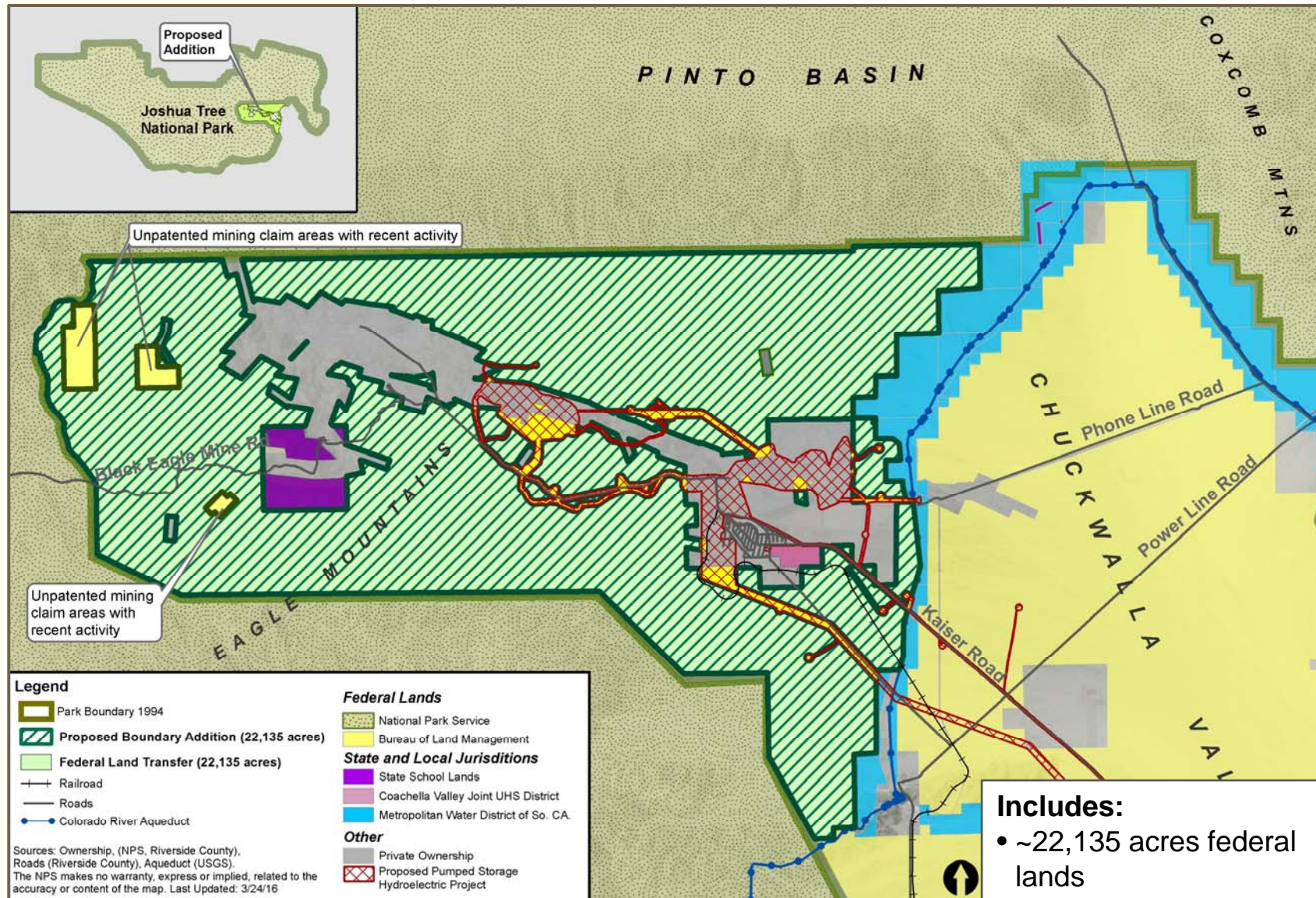


Eagle Mountain Boundary Study, Joshua Tree National Park

National Park Service
Department of the Interior

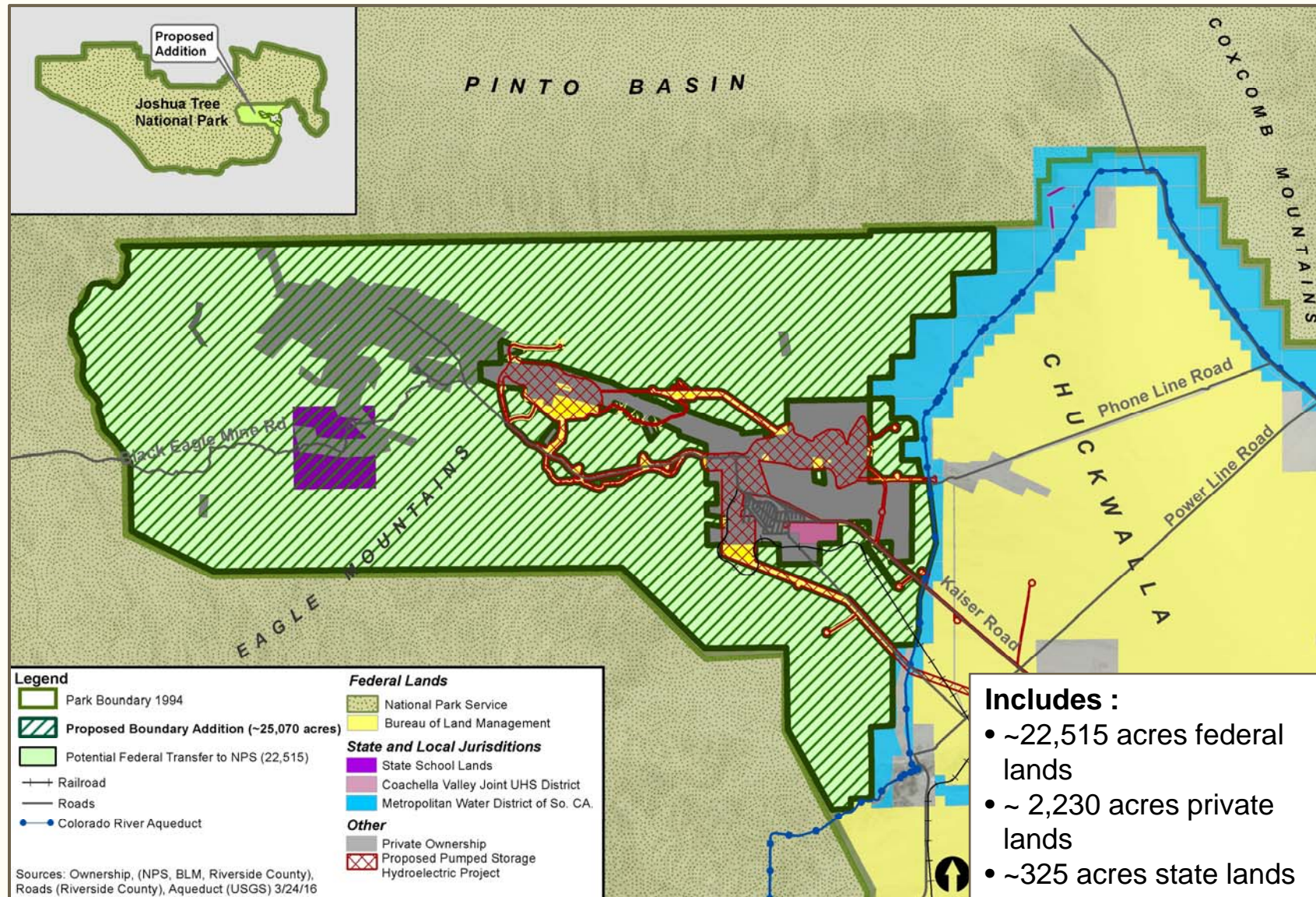


Alternative B: Federal Agency to Agency Land Transfer (~22,135 acres)





Alternative C: Agency Transfer with Enhanced Habitat Connectivity and Recreation (~25,070 acres) – Preferred Alternative/Proposed Action

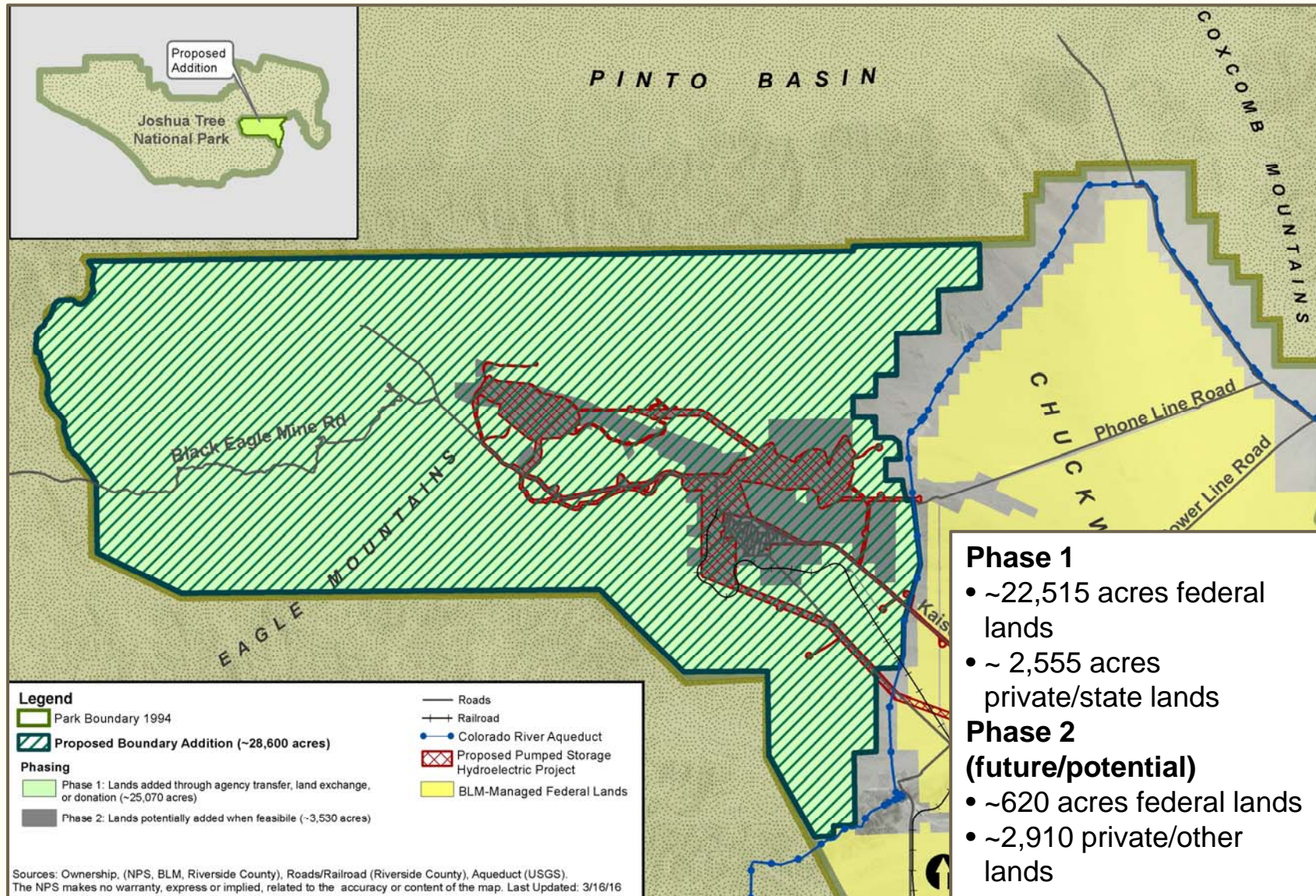


Eagle Mountain Boundary Study, Joshua Tree National Park

National Park Service
Department of the Interior



Alternative D: Restore 1936 Boundary to Provide Diverse Visitor and Resource Protection Opportunities (~28,600 acres)





Environmental Effects – Preferred Alternative (Alternative C)



Positive long-term effects on resource conservation and public enjoyment opportunities from preservation of significant resources (natural, cultural, scenic, etc.)



Some adverse effects on future development and establishment of new mining claims. Valid existing rights retained.



Mining on unpatented claims could continue subject to NPS regulations for mining in the parks. No effect on mining on private lands.



Both beneficial and adverse affect on visitor uses

- Continued visitor access and backcountry use along Black Eagle Mine Road
- Some uses may be limited or restricted
- Opportunities for potential new visitor experiences (interpretive features, trails, camping areas)



Beneficial effects on park management. Consistency in application of land use policies.



Next steps

- Comments on Environmental Assessment through May 27, 2016
- Upcoming Notice of Segregation and Withdrawal Published in Federal Register
- Evaluation of Comments (June 2016)
- Completion of Study (July/August 2016)
- Possible land transfer from BLM to NPS





Questions/Comments?





How to Comment

Upcoming Public Meetings:

Desert Center, CA

May 3, 2016 • 1-3 pm

Lake Tamarisk Community Center
26-251 Parkview Drive

Palm Desert, CA

May 3, 2016 • 6-8 pm

University of California, Riverside - Palm
Desert Center
Second Floor, Room B200
75080 Frank Sinatra Drive

Joshua Tree, CA

May 4, 2016 • 6-8 pm

Joshua Tree Community Center (Elliott Hall)
6171 Sunburst Street

Mailing Address:

Joshua Tree National Park
Attn: Eagle Mountain Boundary Study
74485 National Park Drive
Twentynine Palms, CA 92277-3597

Project Web Site:

<http://parkplanning.nps.gov/eaglemountain>

E-mail: JOTR_study@nps.gov

*****Comments are due by May 27, 2016**