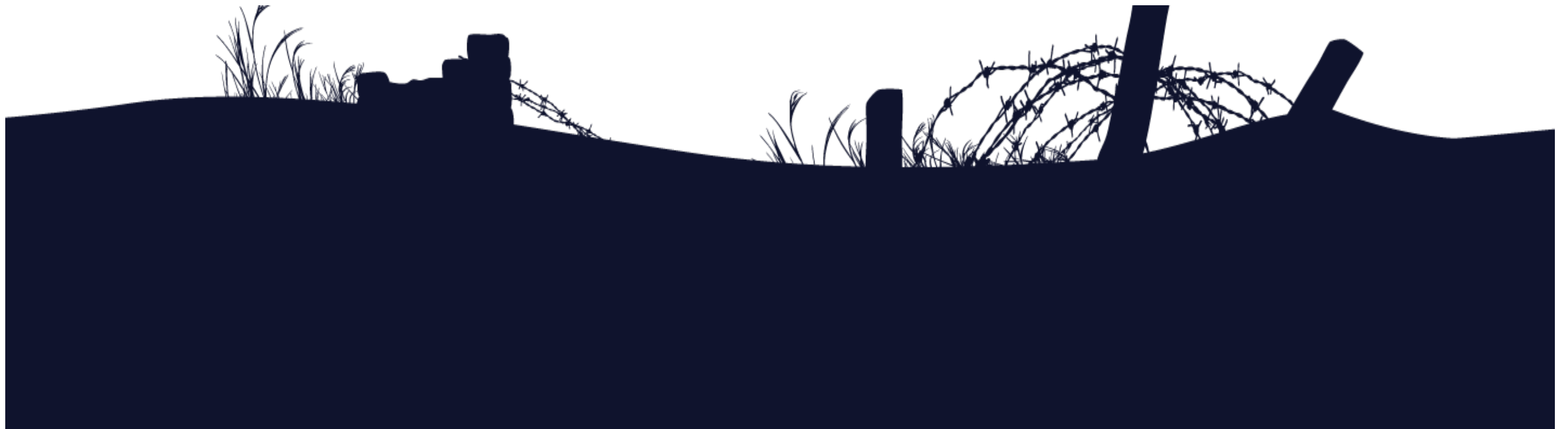


World War I Memorial

Section 106 Consultation

September 21, 2016



Agenda

- 1. Introduction /Context**
- 2. Changes to the APE**
- 3. Review of Determination of Eligibility for Pershing Park**
- 4. Existing Conditions Analysis**
- 5 Review of Competition Design**
- 6. Review of Proposed Design**
- 7. Identification of Potential Adverse Effects**
- 8. Next Steps**

Context

1.Context	2. APE Changes	3. Review of Determination of Eligibility for Pershing Park	4. Existing Conditions Analysis	5. Review of Competition Design	6. Review of Proposed Design	7. Identification of Potential Adverse Effects	8. Next Steps
-----------	----------------	---	---------------------------------	---------------------------------	------------------------------	--	---------------



THE UNITED STATES
WORLD WAR ONE
CENTENNIAL COMMISSION

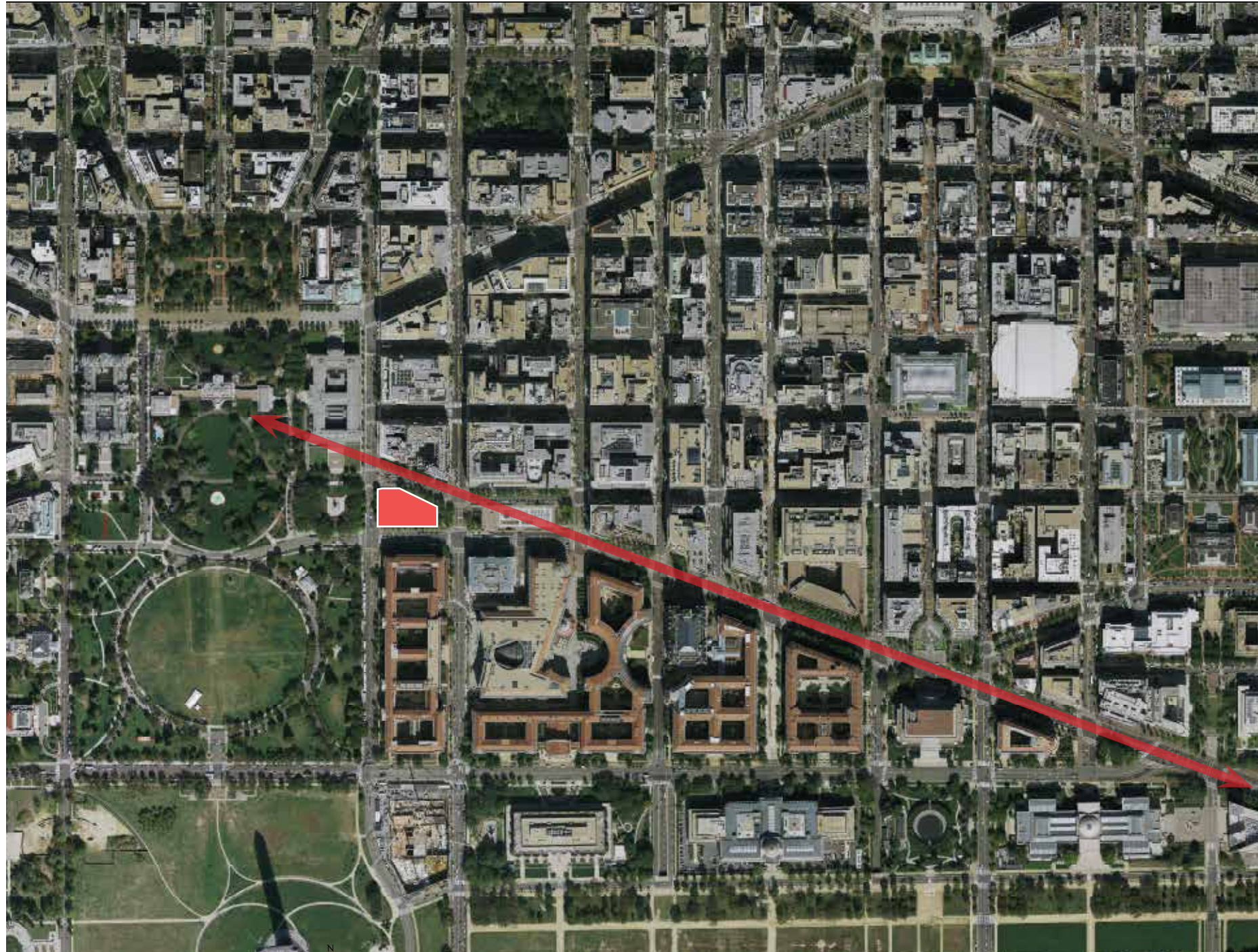


U
STUDIO

FORGE
LANDSCAPE ARCHITECTURE

G|W
W|O
ARCHITECTS

Site Context



- Located east of the White House, north of Federal Triangle, and on the edge of downtown Washington
- Situated prominently on the Pennsylvania Avenue axis connecting the White House and the US Capitol
- Contributing object of the Pennsylvania Avenue National Historic Site

Site Context



- Pershing Park is adjacent to President's Park and Sherman to the west, Freedom Plaza to the east, the Willard InterContinental Hotel to the north, and the Department of Commerce Building (including the White House Visitor's Center) to the south

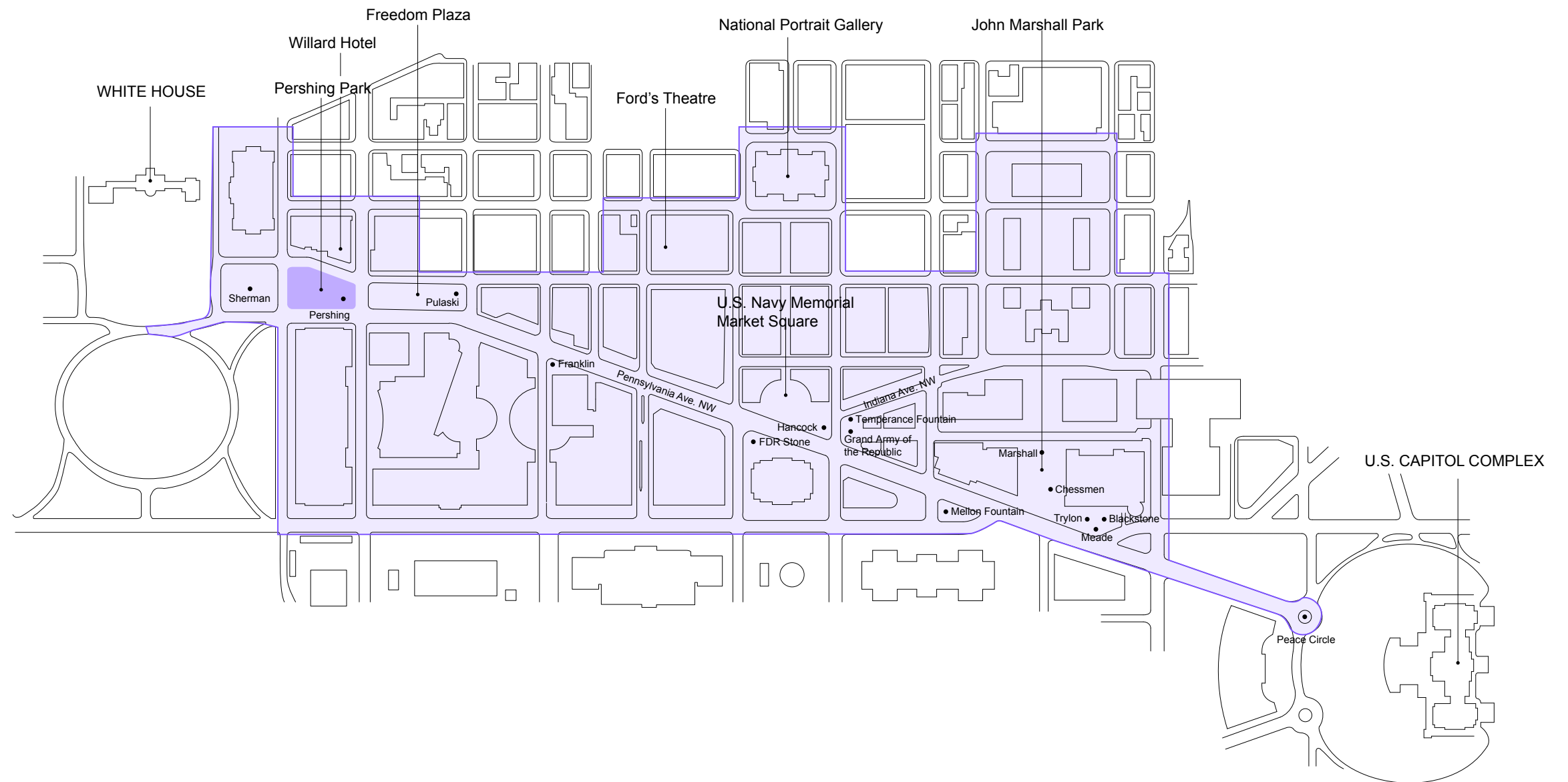
- Pennsylvania Avenue borders the site to the north and the south

- The site serves as a key transition point from green open space to a more urban built environment

2015

Pennsylvania Avenue National Historic Site

- Pershing Memorial is a contributing element to PANHS
- Pershing Park (non-contributing) situated at western end of PANHS
- vital role as commemorative space
- vital role as urban park



THE UNITED STATES
WORLD WAR ONE
CENTENNIAL COMMISSION

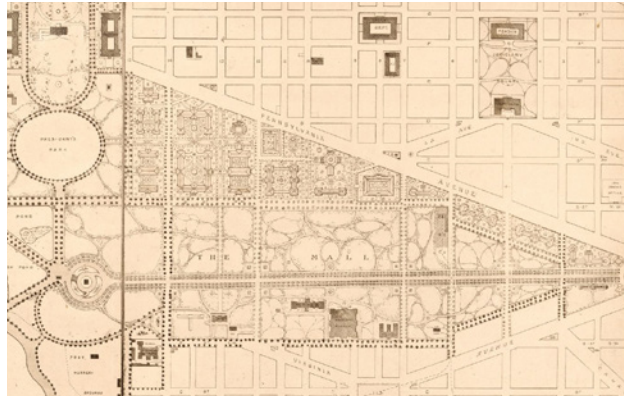


U
STUDIO

FORGE
LANDSCAPE ARCHITECTURE

G|W
W|O
ARCHITECTS

Pershing Park Through Time



- radical change from the 1791 L'Enfant plan to today
- fully built out site per Hopkins Plan of 1887
- witness to Pennsylvania Avenue parades and ceremonies on the north
- open green space in 1939; temporary building 1942-55
- approved by NCPC as site for General Pershing Memorial in 1957
- Beautification Task Force plantings 1966-68
- proposed redesign by PADC in 1974; Pennsylvania Avenue on north and south; generous ceremonial streetscape on north side



1865 Lincoln Funeral



1902



1910



1913



1917 Wilson Inauguration



1920



1925



1953 Eisenhower Inauguration



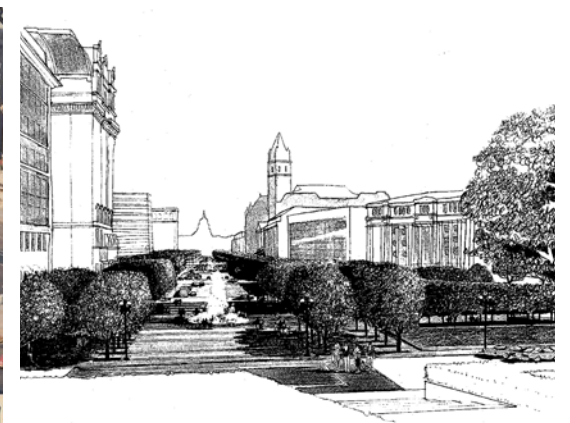
1958



1963 Kennedy Funeral



1966



1974 PADC Rendering



THE UNITED STATES
WORLD WAR ONE
CENTENNIAL COMMISSION



U
STUDIO

FORGE
LANDSCAPE ARCHITECTURE

G|W
W|O
ARCHITECTS

Site Context

Overview of Undertaking:

Enhance the General Pershing Commemorative Work to further honor the service of the U.S. Armed Forces in World War I by constructing on Pershing Park appropriate sculptural and other memorial elements, including landscaping, as provided within Public Law 113-291.

Need for the Memorial:

To fulfill the Congressional mandate for the establishment of a World War I Memorial in Pershing Park.

Area of Potential Effect

1.Context	2. APE Changes	3. Review of Determination of Eligibility for Pershing Park	4. Existing Conditions Analysis	5. Review of Competition Design	6. Review of Proposed Design	7. Identification of Potential Adverse Effects	8. Next Steps
-----------	----------------	---	---------------------------------	---------------------------------	------------------------------	--	---------------



THE UNITED STATES
WORLD WAR ONE
CENTENNIAL COMMISSION

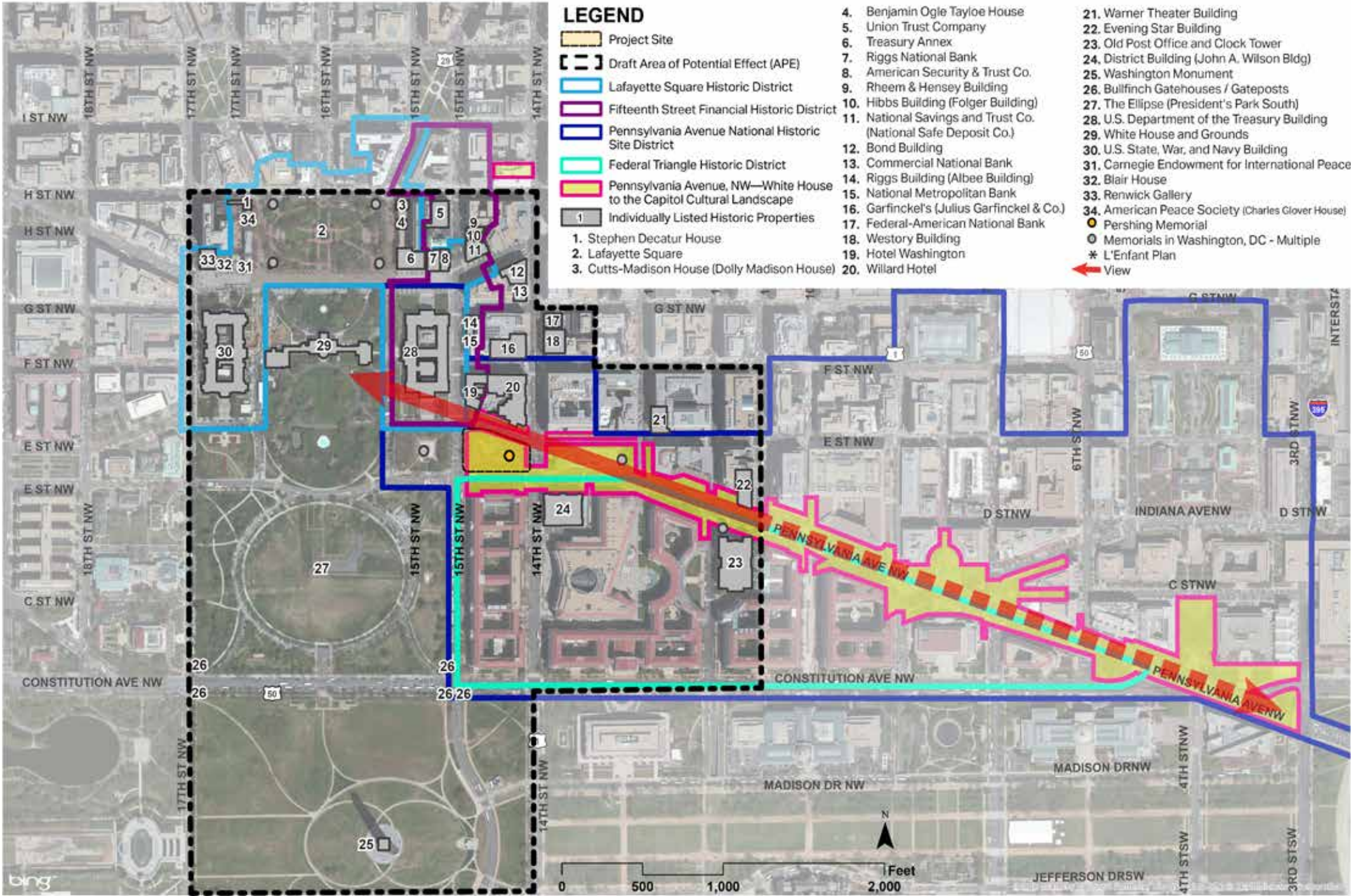


U
STUDIO

FORGE
LANDSCAPE ARCHITECTURE

G|W
W|O
ARCHITECTS

Revised Area of Potential Effect



Review of Area of Potential Effect

Historic Properties Determined Eligible for Listing in the National Register



- **L'Enfant Plan of the City of Washington:** Pershing Park's significance due to its origin as a public space in the McMillan Plan
- **Pennsylvania Avenue National Historic Site:** Pershing Memorial is a contributing object to the National Historic Site; Pershing Park identified as a noncontributing site
- **Pennsylvania Avenue, NW - White House to the Capitol Cultural Landscape:** Pershing Park is a contributing feature due to its spatial organization; Pershing Park also contains associated land uses, circulation, the Pershing Memorial, views and vistas, and PADC site furnishings

Review of Determination of Eligibility for Pershing Park

1.Context	2. APE Changes	3. Review of Determination of Eligibility for Pershing Park	4. Review of Previous Designs	5. Review of Selected Design	6. Identification of Potential Adverse Effects	7. Next Steps
-----------	----------------	---	-------------------------------	------------------------------	--	---------------

Review of Determination of Eligibility for Pershing Park

Submitted July 20th, 2016

Criterion	Applicable Aspect
A	<ul style="list-style-type: none">- Community planning and development as site of John J. Pershing memorial
C	<ul style="list-style-type: none">- Landscape Architecture as a signature designed landscape by M. Paul Friedberg- First modernist commemorative park on one of the important elements of the nationally significant Washington D.C. plan
F	<ul style="list-style-type: none">- Commemorative Property
G	<ul style="list-style-type: none">- Property having achieved significance within the last 50 years for its exceptional significance as a highly intact example of M. Paul Friedberg’s concept of the urban park plaza
Elements	<ul style="list-style-type: none">- Spatial organization, views and vistas, Pershing Memorial, Bex Eagle, PADC street furnishings, and vegetation

Review of Determination of Eligibility for Pershing Park

Criterion A

Associated with events that have made a significant contribution to the broad patterns of our history

Community planning and development as site of the Pershing Memorial



Review of Determination of Eligibility for Pershing Park

Criterion C

Embodies the distinctive characteristics of a type, period, or method of construction, or that represents the work of a master, or that possess high artistic values, or that represent a significant and distinguishable entity whose components may lack individual distinction

Landscape architecture as a signature landscape designed by M. Paul Friedberg



Review of Determination of Eligibility for Pershing Park

Criterion C

Embodies the distinctive characteristics of a type, period, or method of construction, or that represents the work of a master, or that possess high artistic values, or that represent a significant and distinguishable entity whose components may lack individual distinction

First modernist commemorative park on one of the important elements of the nationally significant Washington D.C. plan



Review of Determination of Eligibility for Pershing Park

Criteria Consideration F

*A property primarily
commemorative in intent*

**Honors a significant
individual/event. Derives
significance from function
as a national symbol,
rather than the individual it
commemorates**



Review of Determination of Eligibility for Pershing Park

Criteria Consideration G

A property less than 50 years old having achieved significance if it is of exceptional importance.

Pershing Park was built in the last 50 years as an “urban park plaza.” It offers multiple activities and a playful freedom of choice. The park features modern materials, asymmetry, rectilinear geometric forms, continuously flowing space



Existing Conditions Analysis

1.Context	2. APE Changes	3. Review of Determination of Eligibility for Pershing Park	4. Existing Conditions Analysis	5. Review of Competition Design	6. Review of Proposed Design	7. Identification of Potential Adverse Effects	8. Next Steps
-----------	----------------	---	---------------------------------	---------------------------------	------------------------------	--	---------------



THE UNITED STATES
WORLD WAR ONE
CENTENNIAL COMMISSION



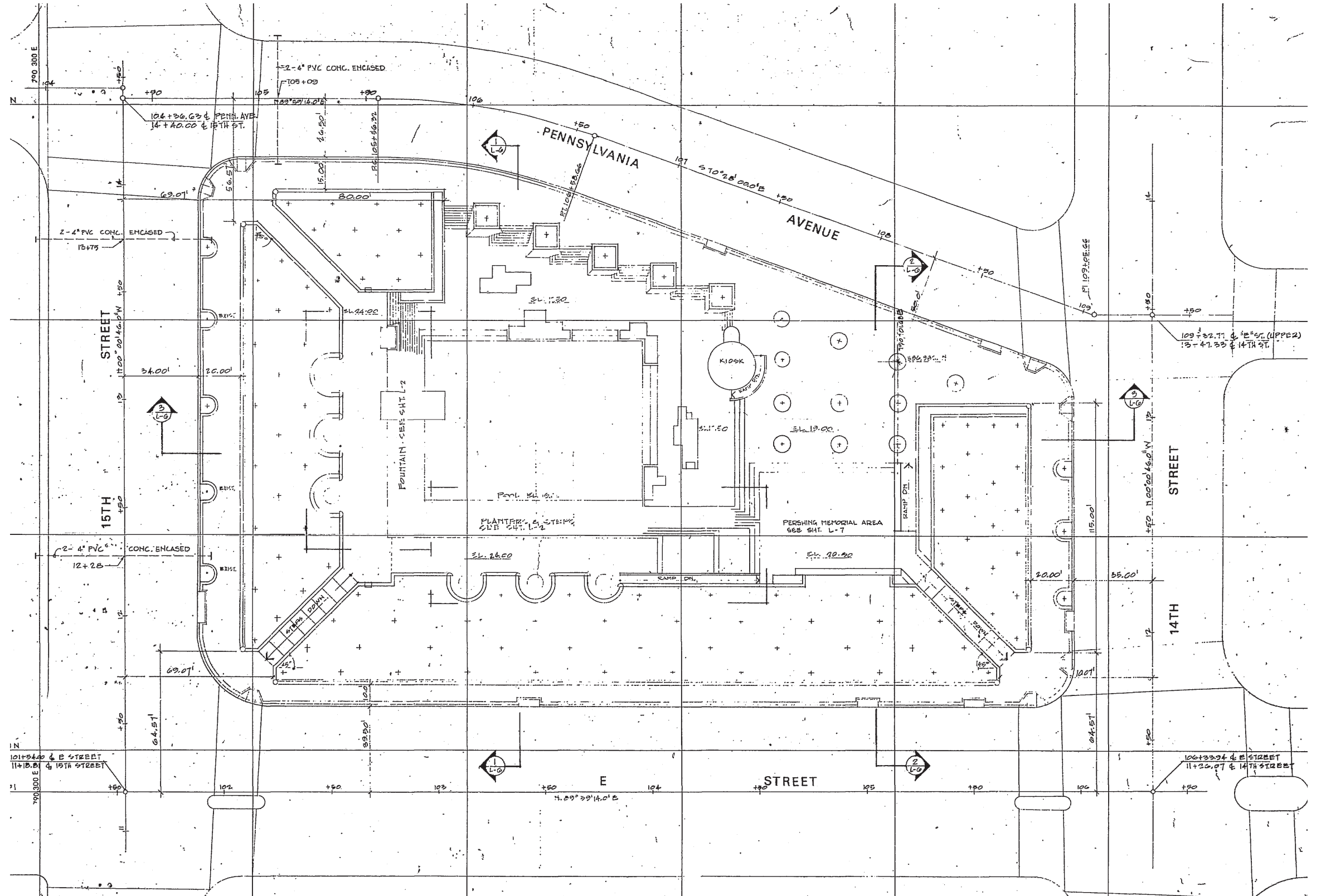
U
STUDIO

FORGE
LANDSCAPE ARCHITECTURE

G|W
W|O
ARCHITECTS

Existing Park Defining Features

- spatial organization
- free flow of space
- omnidirectional views
- vegetation: sense of enclosure
- water feature: urban oasis
- asymmetry with rectilinear forms



THE UNITED STATES
WORLD WAR ONE
CENTENNIAL COMMISSION



U
STUDIO

FORGE
LANDSCAPE ARCHITECTURE

G|W
W|O
ARCHITECTS

Existing Site Conditions

- designed by landscape architect M. Paul Friedberg and architect Wallace K. Harrison
- opened to the public in 1981
- planting redesigned by Oehme van Sweden in 1981 after opening
- closure of central water feature, concessions kiosk, underground restrooms, fountain, and ice rink in 2006
- main challenges and opportunities:
 - central oasis water feature
 - accessibility
 - visibility
 - Pershing Memorial



Pershing Park 2015



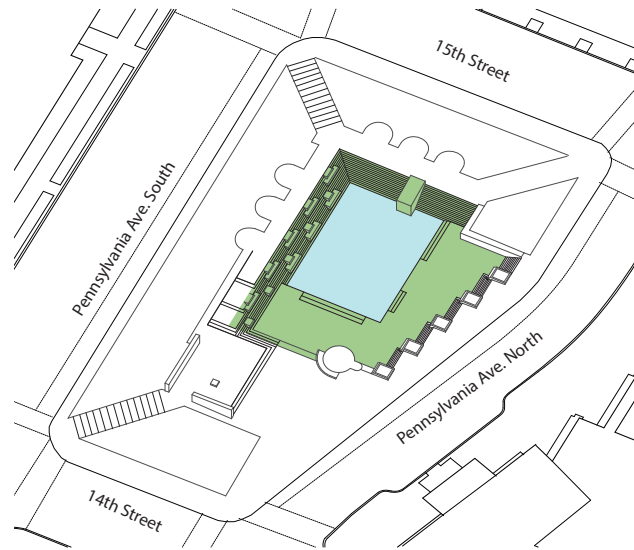
THE UNITED STATES
WORLD WAR ONE
CENTENNIAL COMMISSION



FORGE
LANDSCAPE ARCHITECTURE



Central Oasis



- park designed around central water feature (7575 SF), key feature of urban oasis
- fountain and water basin inoperable since 2006-07



THE UNITED STATES
WORLD WAR ONE
CENTENNIAL COMMISSION

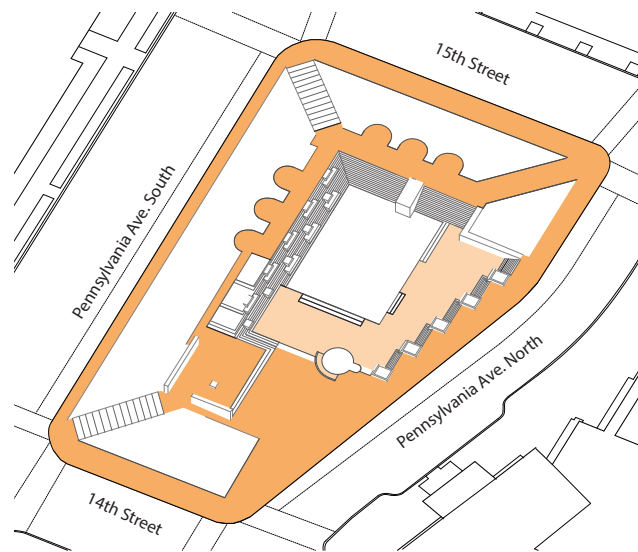


U
STUDIO

FORGE
LANDSCAPE ARCHITECTURE

G|W
W|O
ARCHITECTS

Accessibility



- accessibility constrained by stairs and stepped platforms
- ramps require circuitous route or passage along the margins
- accessible entry gained only at northwest corner and mid-block along Pennsylvania Avenue North



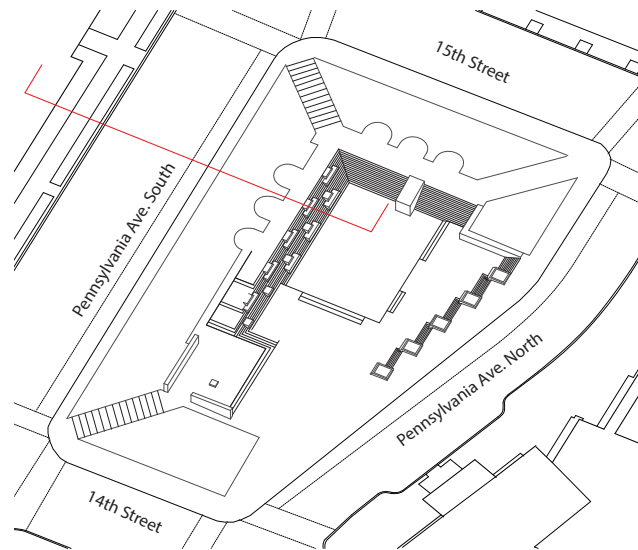
THE UNITED STATES
WORLD WAR ONE
CENTENNIAL COMMISSION



FORGE
LANDSCAPE ARCHITECTURE



Visibility



- sense of enclosure provided by berms shelters people from the noise of city streets
- excessive height makes the park invisible from the street and creates safety concerns



N/S Section: Limited Visibility Into the Park



View from Pennsylvania Avenue South, looking northeast



THE UNITED STATES
WORLD WAR ONE
CENTENNIAL COMMISSION

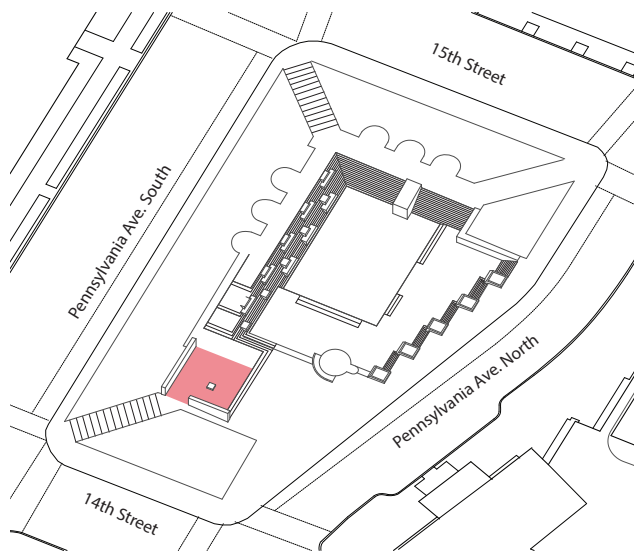


U
STUDIO

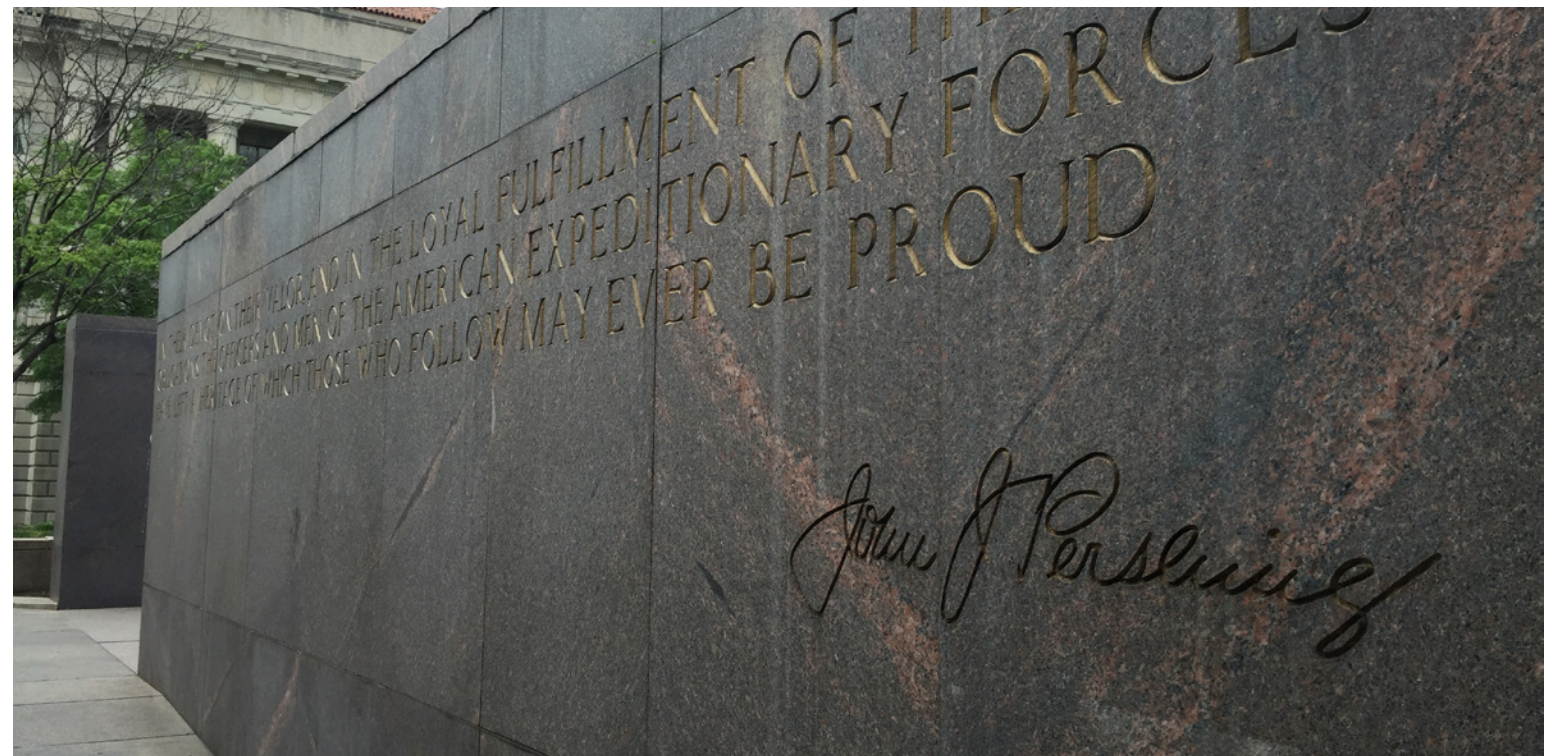
FORGE
LANDSCAPE ARCHITECTURE

G|W
W|O
ARCHITECTS

Pershing Memorial



- contributing element within Pennsylvania Avenue National Historic Site
- walls define memorial precinct (3400 SF)
- does not commemorate greater sacrifice of all WWI servicemen and women
- not well integrated into site
- inscriptions on walls lack legibility



Review of Competition Design

1.Context	2. APE Changes	3. Review of Determination of Eligibility for Pershing Park	4. Existing Conditions Analysis	5. Review of Competition Design	6. Review of Proposed Design	7. Identification of Potential Adverse Effects	8. Next Steps
-----------	----------------	---	---------------------------------	---------------------------------	------------------------------	--	---------------



THE UNITED STATES
WORLD WAR ONE
CENTENNIAL COMMISSION



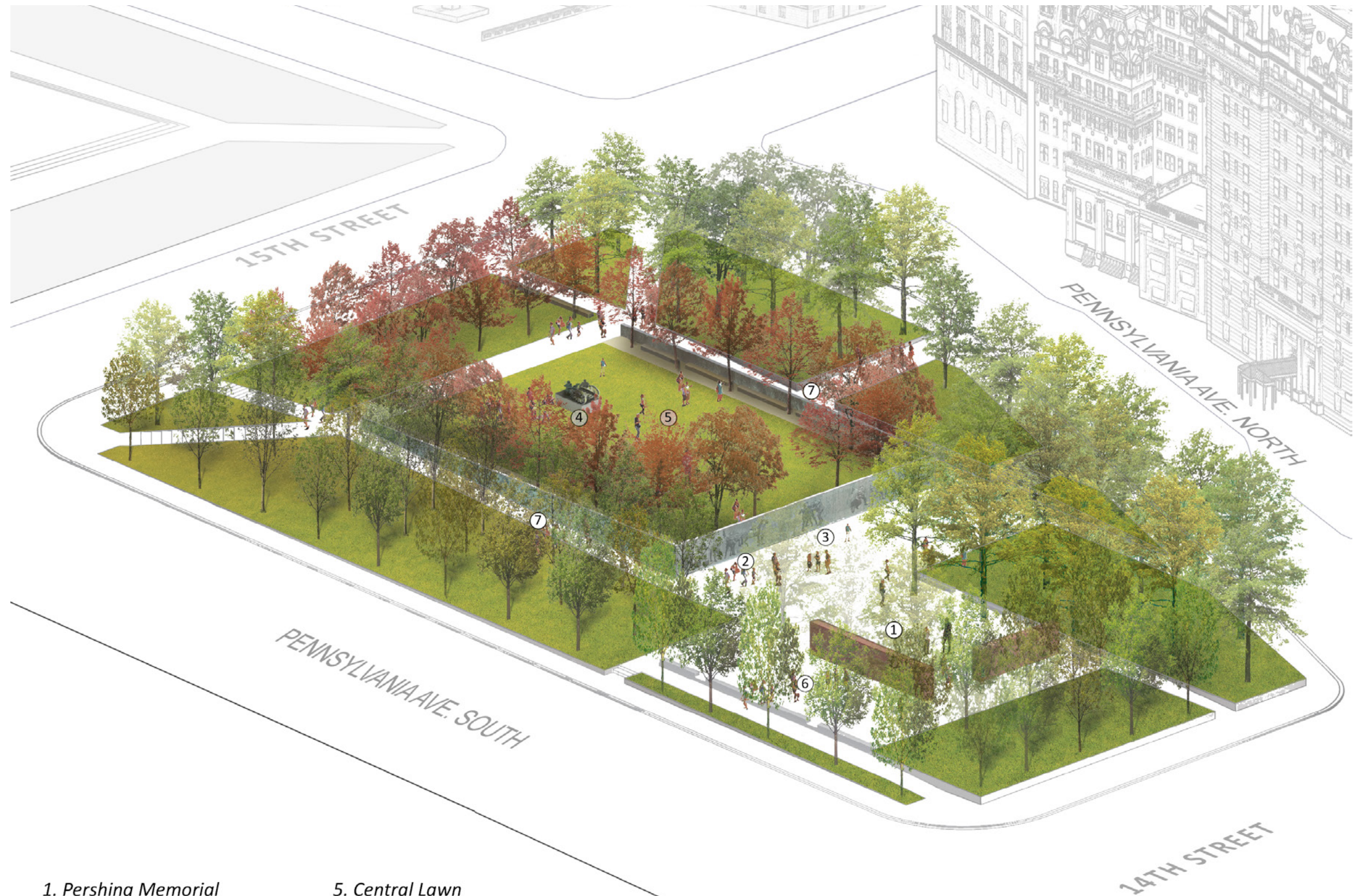
U
STUDIO

FORGE
LANDSCAPE ARCHITECTURE

G|W
W|O
ARCHITECTS

The Weight of Sacrifice

- integration of memorial and park
- raised central space surrounded by walls commemorate WWI through figurative sculpture and narrative
- design links memorial to General Sherman on the West and Freedom Plaza on the East



- | | |
|---------------------------------|-----------------|
| 1. Pershing Memorial | 5. Central Lawn |
| 2. Wall of Remembrance | 6. Civic Plaza |
| 3. Brothers-In-Arms Relief | 7. Allee |
| 4. Wheels of Humanity Sculpture | |



THE UNITED STATES
WORLD WAR ONE
CENTENNIAL COMMISSION



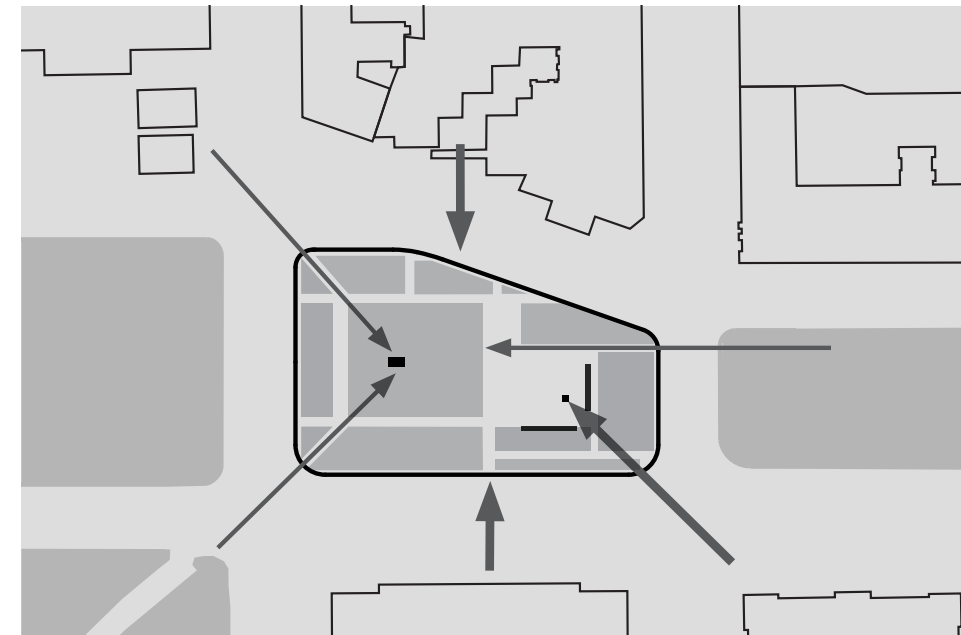
U
STUDIO

FORGE
LANDSCAPE ARCHITECTURE

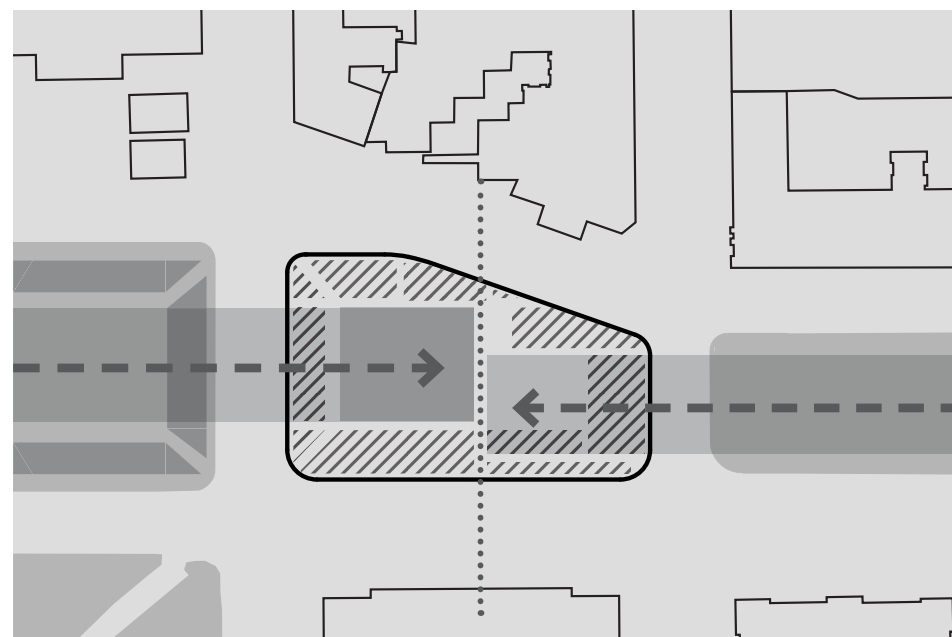
G|W
W|O
ARCHITECTS



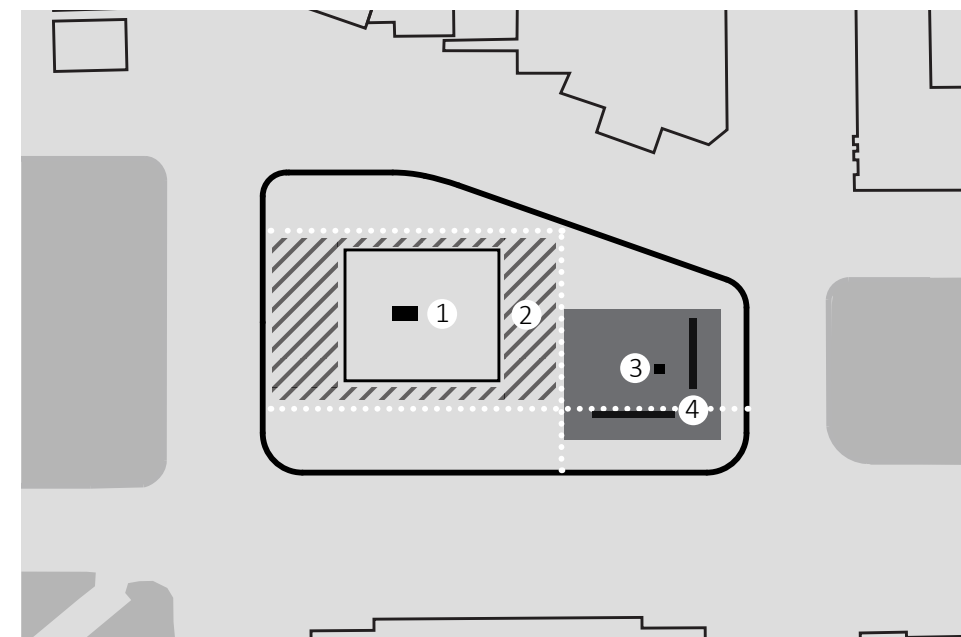
Pedestrian access to the site is primarily from the South-West in the direction of the mall, from the South-East via Freedom Plaza and the Freedom Triangle metro stop, and from the White House



Key views into the site are from the four corners, Pennsylvania Ave., and from the Willard Hotel



Connection to the surrounding park and plaza spaces



Procession of monuments: 1) Wheels of Fury 2) Wall of Remembrance 3) Pershing Statue 4) Pershing Walls

Competition Design: Context Analysis



Competition Design: E/W section looking north



Competition Design: Wall of Remembrance



Competition Design: Raised central Memorial space



THE UNITED STATES
WORLD WAR ONE
CENTENNIAL COMMISSION



U
STUDIO

FORGE
LANDSCAPE ARCHITECTURE

G|W
W|O
ARCHITECTS

Summary of Feedback

- bifurcation of the site is undesirable; proposed design should retain and create a primary unified space
- raised lawn creates a cul-de-sac
- lack of hierarchy between commemorative elements
- distinction between solemn commemoration and active public open space is unclear
- mid-block crossing is problematic
- softened shapes and forms of perimeter berms are a beneficial enhancement to the existing park
- thematic relationship between existing General Pershing memorial and future WWI Memorial Wall, focusing on commemorating all servicemen and women, is welcomed
- proposed design should retain conceptual elements of the existing park, integrating a broader commemorative function
- Pershing Park and Pennsylvania Avenue are works in progress; agencies (specifically SHPO) do not desire to keep the park static



THE UNITED STATES
WORLD WAR ONE
CENTENNIAL COMMISSION



U
STUDIO

FORGE
LANDSCAPE ARCHITECTURE

G|W
W|O
ARCHITECTS

Overview of Proposed Design

1.Context	2. APE Changes	3. Review of Determination of Eligibility for Pershing Park	4. Existing Conditions Analysis	5. Review of Competition Design	6. Review of Proposed Design	7. Identification of Potential Adverse Effects	8. Next Steps
-----------	----------------	---	---------------------------------	---------------------------------	------------------------------	--	---------------



THE UNITED STATES
WORLD WAR ONE
CENTENNIAL COMMISSION



U
STUDIO

FORGE
LANDSCAPE ARCHITECTURE

G|W
W|O
ARCHITECTS

Proposed Design

- rehabilitates Pershing Park to serve as a national World War I Memorial
- integrates new commemorative elements while maintaining character-defining features of existing park
 - spatial organization
 - views and vistas
 - Pershing Memorial
 - water feature
 - vegetation
 - amphitheater seating areas with planters
 - alcoves along elevated walk with semicircular seating



THE UNITED STATES
WORLD WAR ONE
CENTENNIAL COMMISSION



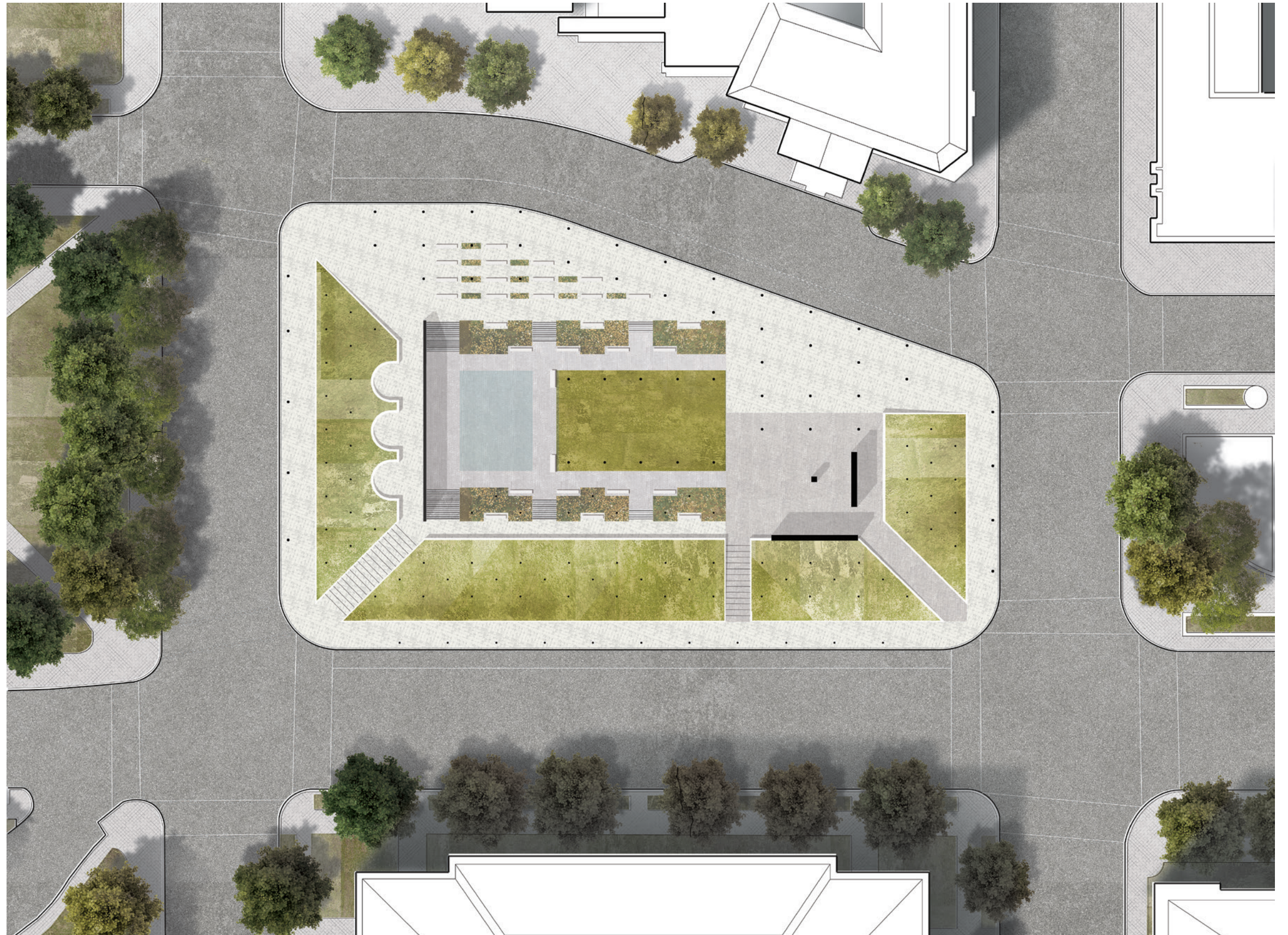
U
STUDIO

FORGE
LANDSCAPE ARCHITECTURE

G|W
W|O
ARCHITECTS

Proposed Design

- fulfills Congressional mandate to enhance Pershing Park as a National World War I Memorial
- reestablishes oasis in the city
- enhances visual access
- addresses accessibility and safety
- enhances relationship with urban context
- enhances physical connections between commercial uses and across Pennsylvania Avenue North



THE UNITED STATES
WORLD WAR ONE
CENTENNIAL COMMISSION



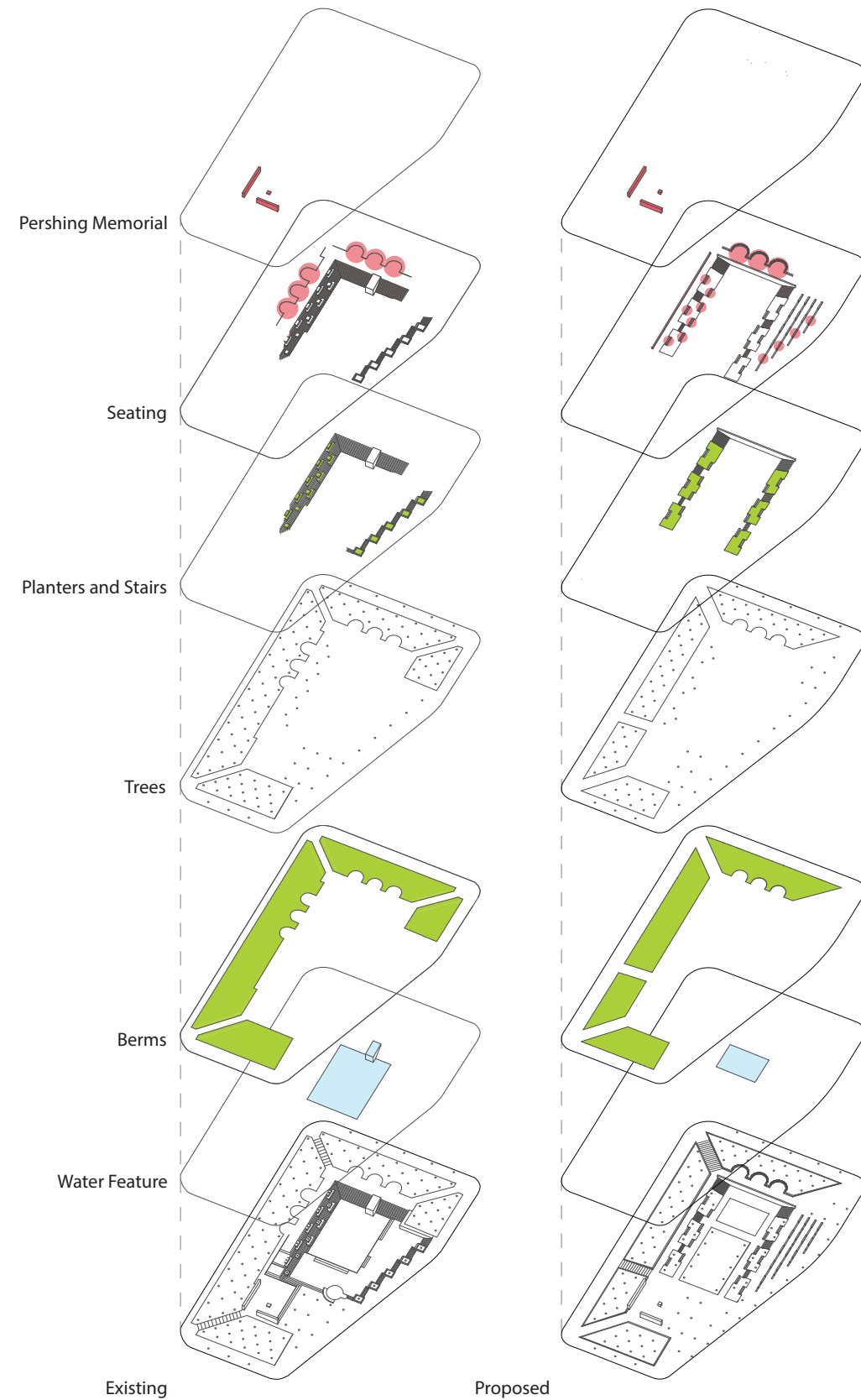
U
STUDIO

FORGE
LANDSCAPE ARCHITECTURE

G|W
W|O
ARCHITECTS

Features Retained

- water feature rehabilitated, reduced in size, accomodating seasonal use
- earthen berms retained in existing location and orientation with additional access point through southern berm, more generous corner entries, widening of Pennsylvania Ave. South sidewalk
- trees retained across the site, reduced in numbers within the berms to ensure adequate soil volume
- planters and stairs on north side of central space shifted south
- stair retained on south side of central space
- additional seating provided in existing location on south stair and along Pennsylvania Avenue North
- semi-circular seating retained on west side of central space
- Pershing Memorial retained in current location



THE UNITED STATES
WORLD WAR ONE
CENTENNIAL COMMISSION



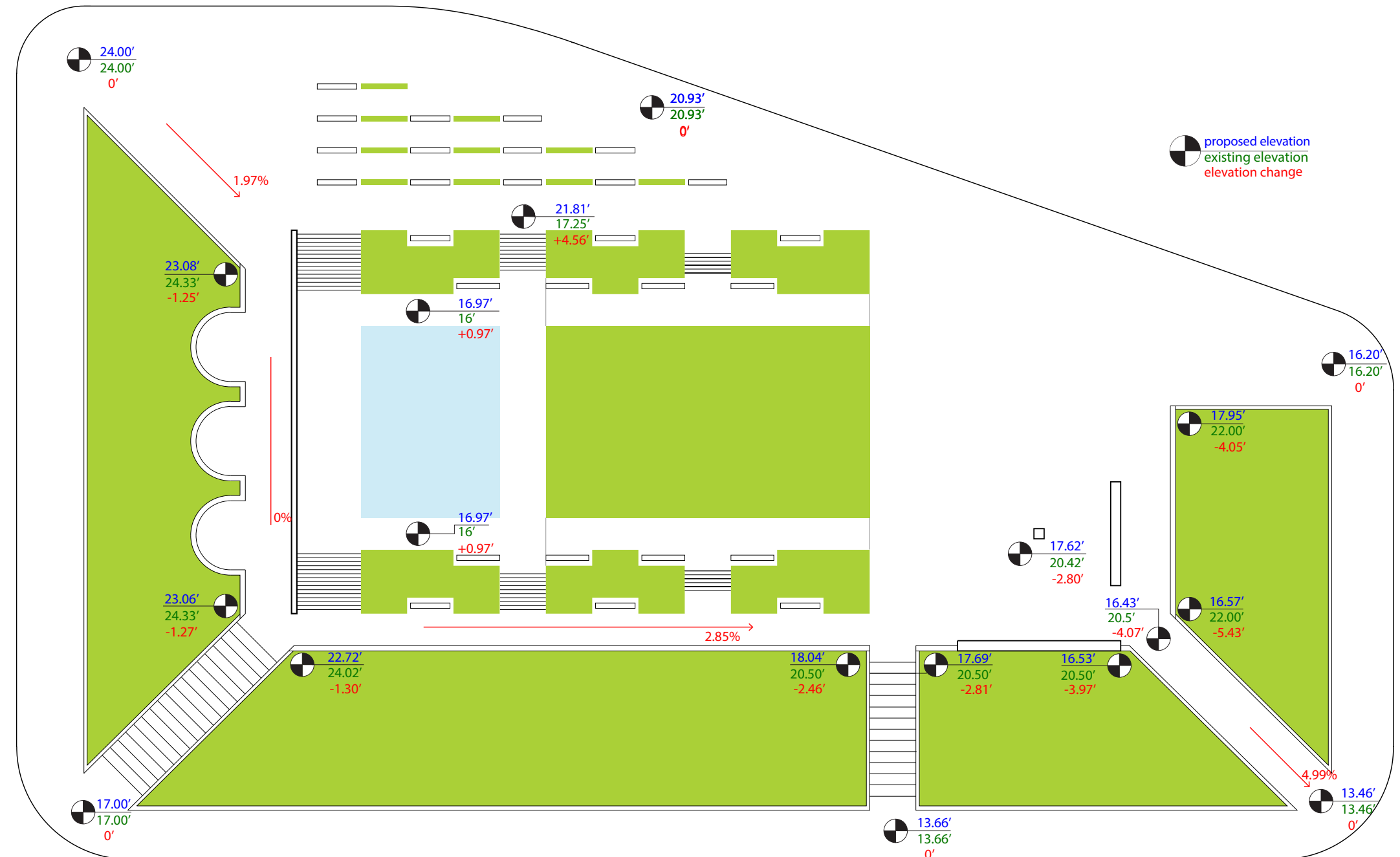
U
STUDIO

FORGE
LANDSCAPE ARCHITECTURE

G|W
W|O
ARCHITECTS

Topographic Enhancement

- maintains overall topographic relationships of existing park
- barriers to accessibility removed where possible
- visibility and accessibility enhanced across central Memorial space
- earthen berms softened to increase visibility into park on the south, west, and east sides



THE UNITED STATES
WORLD WAR ONE
CENTENNIAL COMMISSION



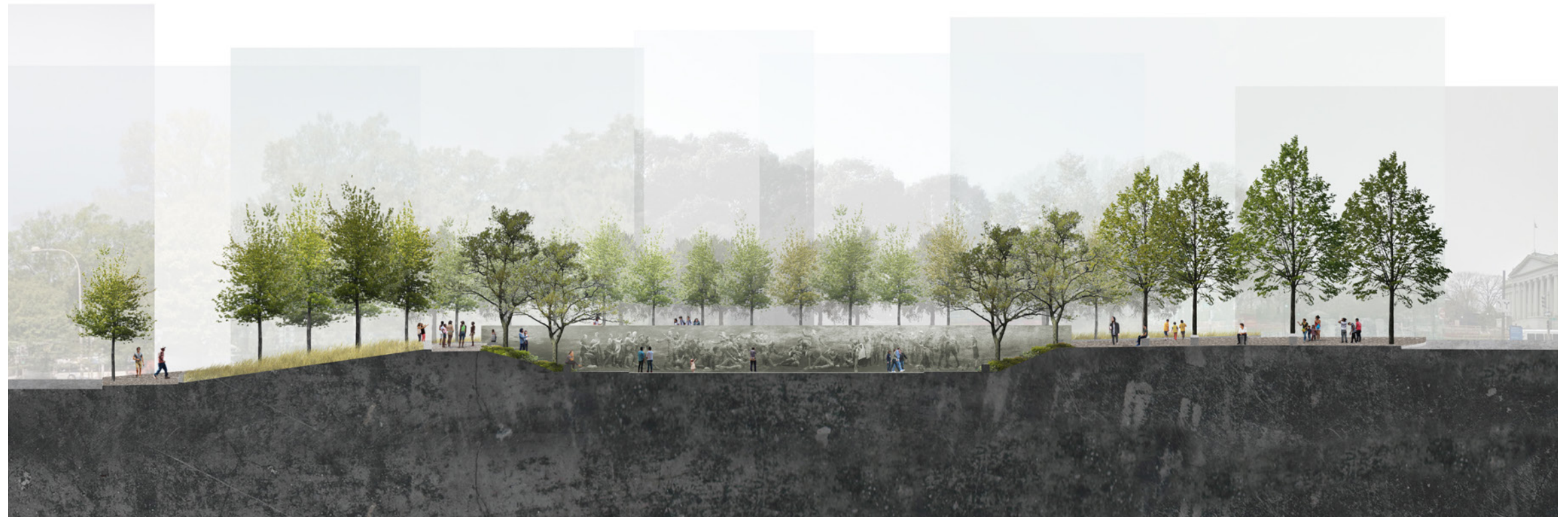
U
STUDIO

FORGE
LANDSCAPE ARCHITECTURE

G|W
W|O
ARCHITECTS

Memorial Wall

- primary new commemorative element
- framed by trees and north / south stair
- visual and tactile experience honoring the sacrifice of all World War I servicemen and women
- walkway on south and terrace area on north provide views of wall and visual connection across site
- views and access into park from Pennsylvania Avenue North and South



N/S Section Looking West



THE UNITED STATES
WORLD WAR ONE
CENTENNIAL COMMISSION



U
STUDIO

FORGE
LANDSCAPE ARCHITECTURE

G|W
W|O
ARCHITECTS

Accessibility and Visibility

- open, unified spaces are inclusive
- connection to urban context
- views into park on east, west, and south sides
- direct physical and visual connection between Pershing Memorial and the Memorial Wall



THE UNITED STATES
WORLD WAR ONE
CENTENNIAL COMMISSION



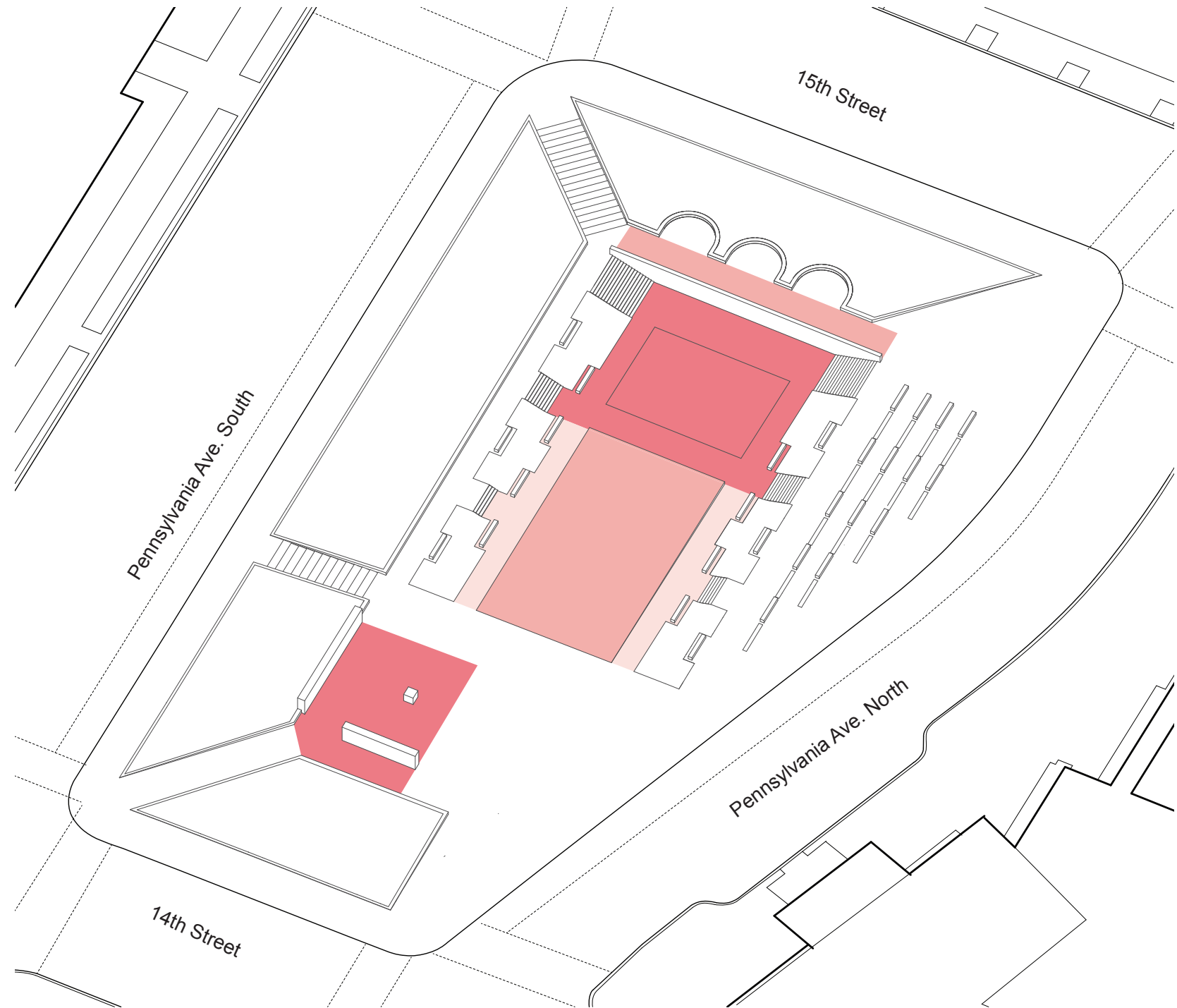
U
STUDIO

FORGE
LANDSCAPE ARCHITECTURE

G|W
W|O
ARCHITECTS

Memorial Precincts

- zones of proximity to Memorial elements
- sacred space of reflection, commemoration, and education
- integration of flexible urban park space
- zones of overlapping use



THE UNITED STATES
WORLD WAR ONE
CENTENNIAL COMMISSION



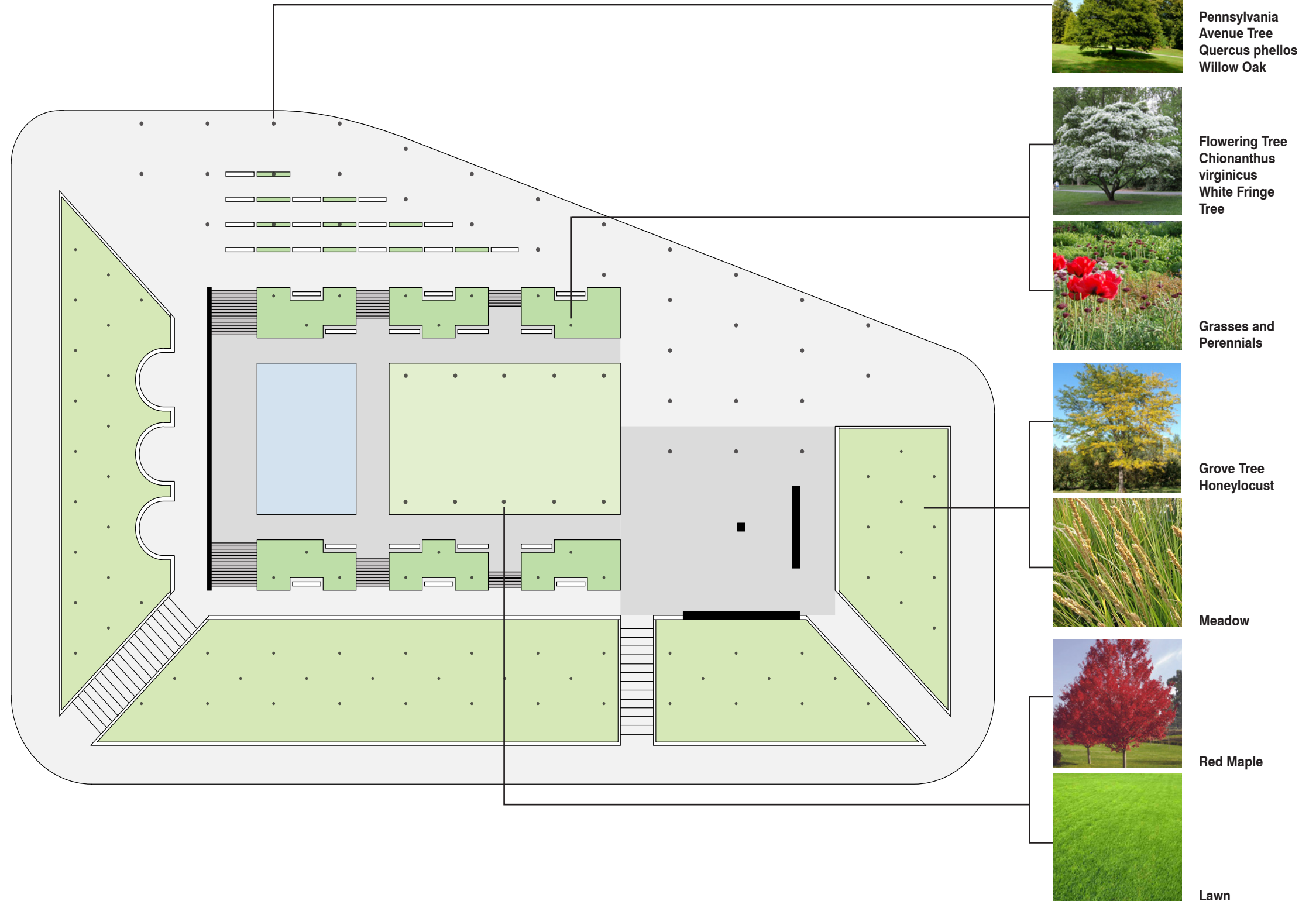
U
STUDIO

FORGE
LANDSCAPE ARCHITECTURE

G|W
W|O
ARCHITECTS

Planting Design

- legacy of Oehme van Sweden's planting design
- palette of appropriate native and adapted trees, grasses, and perennials
- low maintenance and year round color, structure, and shape.
- understory of grasses and forbs reduces maintenance while increasing ecological value
- increased diversity of species
- number of trees in berms reduced to ensure minimum 1000 cubic feet of soil per tree



THE UNITED STATES
WORLD WAR ONE
CENTENNIAL COMMISSION



STUDIO
FORGE

LANDSCAPE ARCHITECTURE



ARCHITECTS



View looking east



THE UNITED STATES
WORLD WAR ONE
CENTENNIAL COMMISSION



U
STUDIO

FORGE
LANDSCAPE ARCHITECTURE

G|W
W|O
ARCHITECTS



View looking west



THE UNITED STATES
WORLD WAR ONE
CENTENNIAL COMMISSION



U
STUDIO

FORGE
LANDSCAPE ARCHITECTURE

G|W
W|O
ARCHITECTS



View looking west



THE UNITED STATES
WORLD WAR ONE
CENTENNIAL COMMISSION



U
STUDIO

FORGE
LANDSCAPE ARCHITECTURE

G|W
W|O
ARCHITECTS



View from northwest corner looking east



View from southeast corner



THE UNITED STATES
WORLD WAR ONE
CENTENNIAL COMMISSION



U
STUDIO

FORGE
LANDSCAPE ARCHITECTURE

G|W
W|O
ARCHITECTS

Identification of Potential Adverse Effects

1.Context	2. APE Changes	3. Review of Determination of Eligibility for Pershing Park	4. Existing Conditions Analysis	5. Review of Competition Design	6. Review of Proposed Design	7. Identification of Potential Adverse Effects	8. Next Steps
-----------	----------------	---	---------------------------------	---------------------------------	------------------------------	--	---------------



Identification of Potential Adverse Effects



Historic Area	Discussion Points
Pershing Park	The World War I Memorial could affect physical park elements, such as statues or structures, but would maintain the conceptual elements and the overall spatial orientation of the modernist layout.
Pennsylvania Avenue Cultural Landscape	The World War I Memorial would maintain similar spatial organization, commemorative and passive recreation land uses, the Pennsylvania Avenue standards, the Pershing Memorial, and axial view from Treasury Building to the U.S. Capitol. Potential treatment of Bex Eagle is undetermined.
Pennsylvania Avenue National Historic Site (Pershing Memorial as a contributing feature)	The Pershing Memorial would be minimally altered, maintaining the location of the walls and central figural statue. The World War I Memorial would enhance the visibility of the Pershing Statue and the legibility of the Pershing Memorial walls.
L'Enfant Plan	The World War I Memorial maintains Pershing Park open space, retains the current boundaries, and does not alter the existing vistas.

Discussion

Next Steps

- Receive comments from review agencies
- Make formal determination of effect
- Prepare EA

1.Context	2. APE Changes	3. Review of Determination of Eligibility for Pershing Park	4. Existing Conditions Analysis	5. Review of Competition Design	6. Review of Proposed Design	7. Identification of Potential Adverse Effects	8. Next Steps
-----------	----------------	---	---------------------------------	---------------------------------	------------------------------	--	---------------

