
COMMUNITY MEETING

FRANKLIN PARK

NOVEMBER 2018



Land DAVID RUBIN

Collective

STUDIOS
architecture



you're invited

Franklin Park Public Meeting Presentation of Concept Design

when

Wednesday, November 14, 2018

Session I: 8:30 a.m. - 10:00 a.m.

Session II: 6:00 p.m. - 8:00 p.m.

where

Session I:

One Franklin Square
1301 K Street NW
Washington, DC 20071

Session II:

The Hamilton Hotel
1001 14th Street NW
Washington, DC 20005

The National Park Service (NPS), the D.C. Department of General Services, the D.C. Office of Planning, the D.C. Department of Parks and Recreation and the Downtown BID are hosting two public meetings, on Wednesday, November 14, 2018 from 8:30 a.m. to 10:00 a.m. at One Franklin Square, 1301 K Street NW, Washington DC, 20071 and from 6:00 p.m. to 8:00 p.m. at the Hamilton Hotel, 1001 14th Street NW, Washington, DC, 20005 to present concept designs for the restoration and transformation of Franklin Park. The Franklin Park concept designs were developed based on desired park uses and programs prioritized from both public comments submitted to NPS and feedback received at prior Franklin Park community meetings.

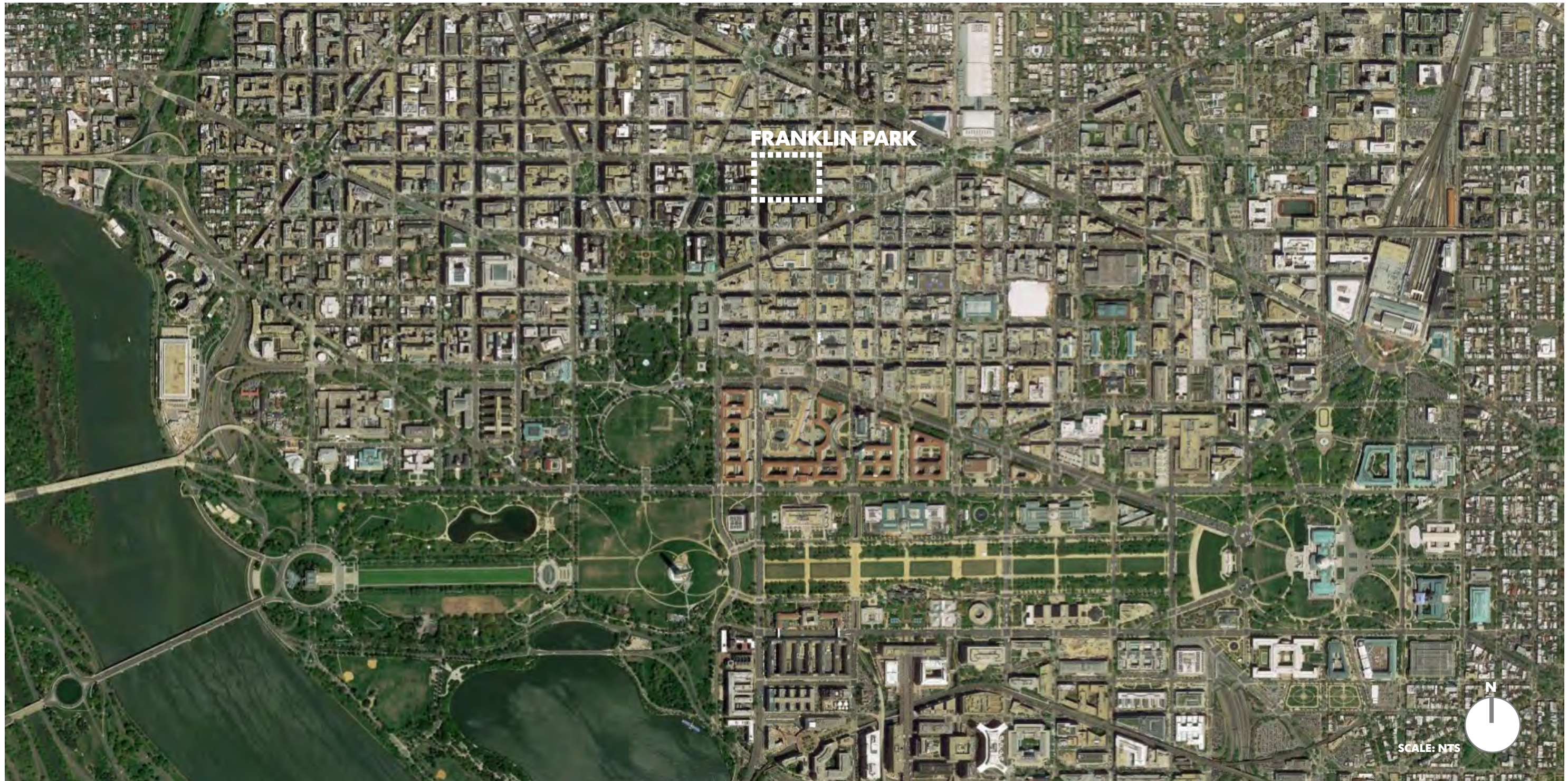
For more information about the Franklin Park Vision and Transformation Plan, please visit: parkplanning.nps.gov/FranklinPark



Land
DAVID RUBIN

Collective

STUDIOS
architecture



WASHINGTON D.C.
FRANKLIN PARK

November 2018



Land
DAVID RUBIN

Collective

STUDIOS
architecture



WASHINGTON D.C.
FRANKLIN PARK

November 2018

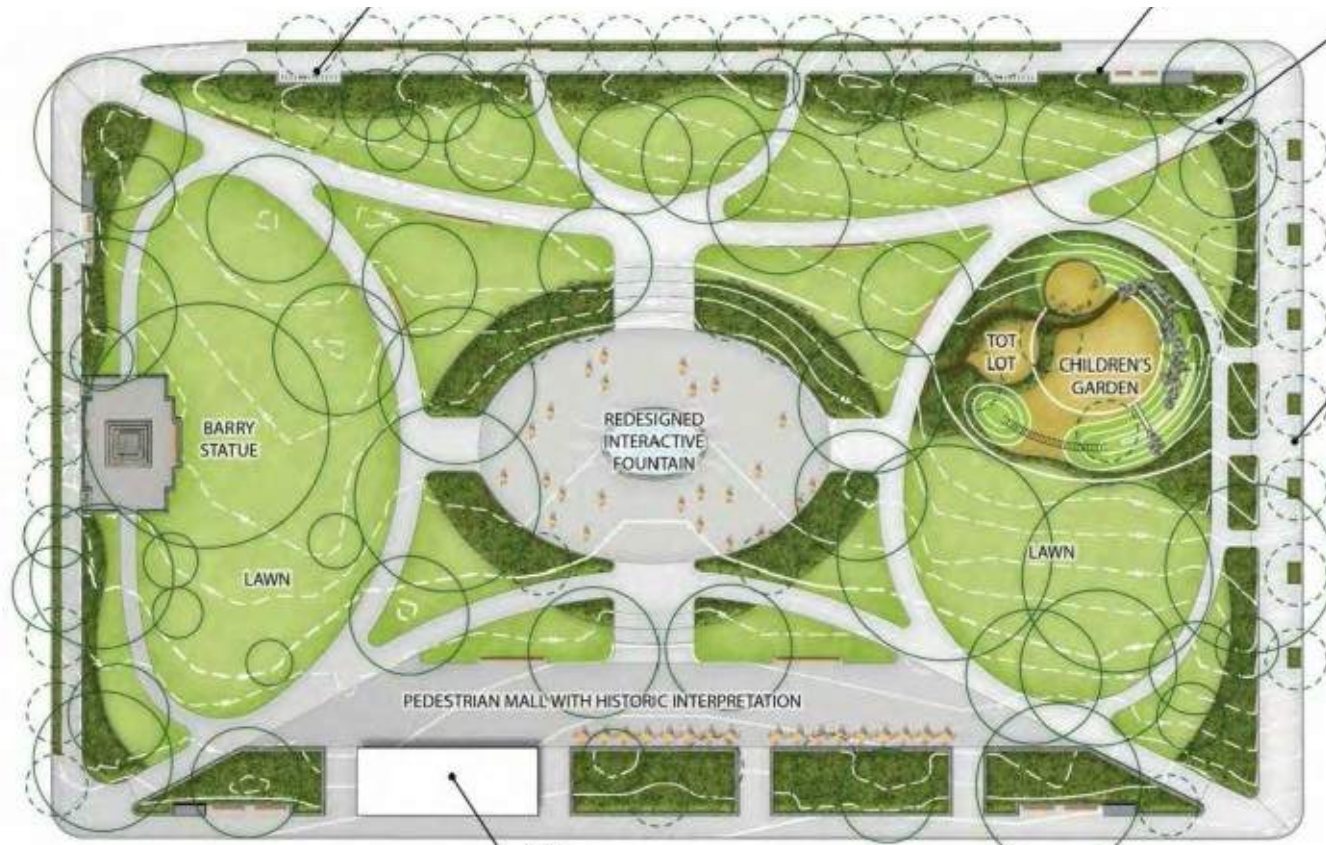


VISION:

- To realize this dramatic transformation, we believe that an inclusive design process and **a bold approach to improvements and programming** is necessary to create a great park that can attract and serve users, as well as engage in financial support from multiple partners for long-term maintenance and operation.

GOALS:

- As an urban park, Franklin Park should **provide multiple active and passive recreational opportunities**, essential services such as restrooms, food and flexible seating, and have actively managed daytime and evening events and programs.
- The renovation of Franklin Park should **celebrate and respect the park's historic character and sense of place** through restored historic resources, rich landscaping and seasonal plantings, and high quality site and building materials.
- Franklin Park should be redesigned as **a sustainable, maintainable, and ecologically sensitive place that serves a diverse group of users** including young and old District residents, workers, and visitors.
- Franklin Park should be framed by an enhanced streetscape and public realm and integrated with multiple transportation modes, including Capital Bikeshare, Metrobus, Metrorail, and future streetcar.
- Franklin Park should utilize a public/private management structure to fund, program, maintain, and provide security for the park.



MASTER PLAN 2015

- New East-West path to central space
- New Cafe/Pavilion for park users
- New social plaza along the southern portion of the site
- New Children's Garden



SCHEMATIC DESIGN 2018

MASTER PLAN TO SCHEMATIC DESIGN FRANKLIN PARK

November 2018



Land
DAVID RUBIN

Collective

STUDIOS
architecture

EARLY HISTORY, FARMLAND OF PORT ROYAL

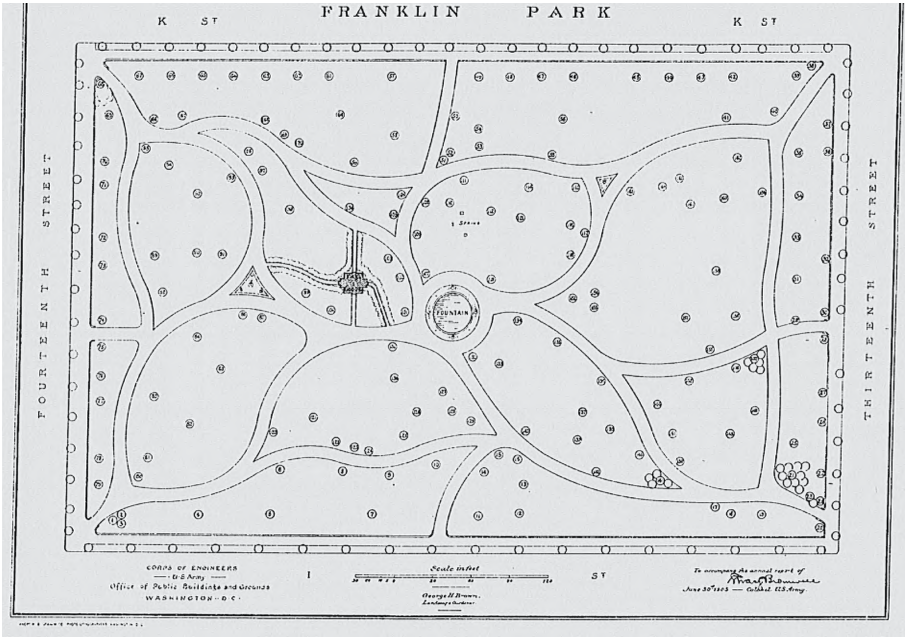


PRE 1851

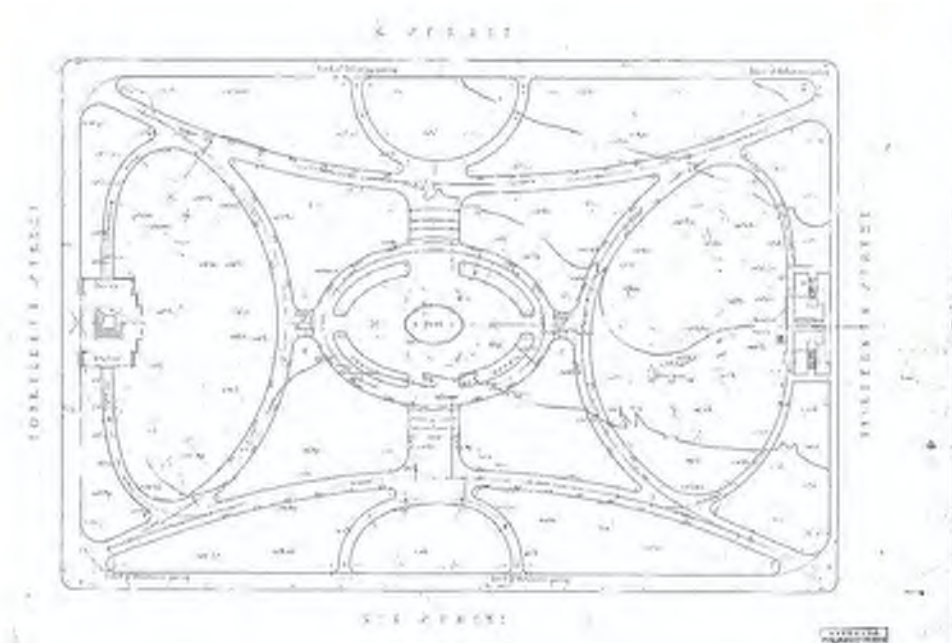
FIRST 100 YEARS

PAST 100 YEARS

NEXT 100 YEARS



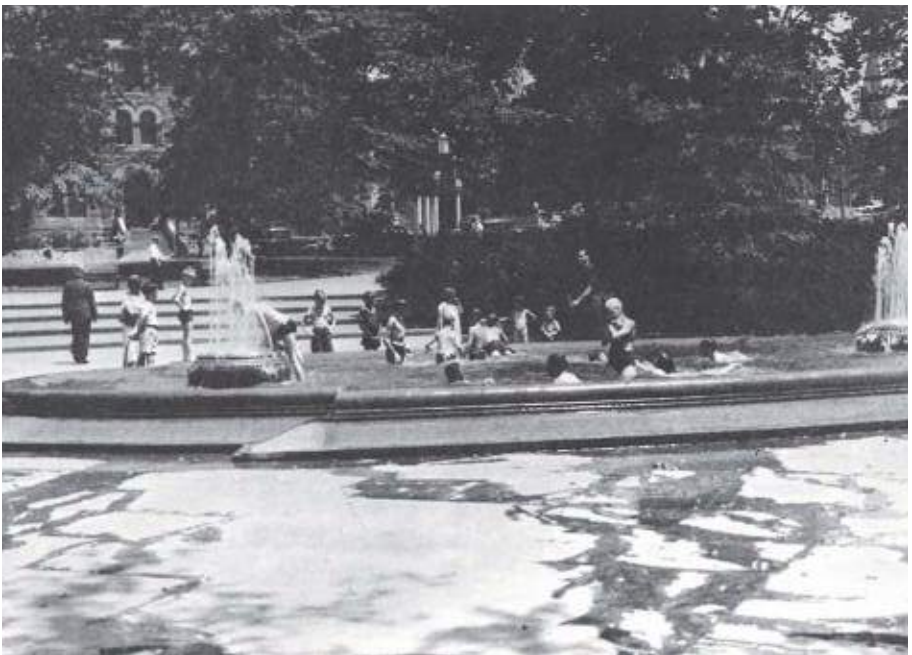
1851 - 1933



1933 - 2020



2020 - 2120



SITE OVERVIEW

- REHABILITATE SOILS, LAWNS, AND SITE PLANTING.
- ASSESS ORIGINAL AND EXISTING TREE LOCATIONS & HEALTH TO ESTABLISH A PROPOSED PLANTING STRATEGY THAT ENSURES FUTURE CANOPY COVER.
- REFINE HISTORIC PATH NETWORK TO IMPROVE FUNCTION AND UNIVERSAL ACCESS, SPECIFICALLY TO THE CENTRAL FOUNTAIN PLAZA.
- REFURBISH & REUSE HISTORIC LIGHT FIXTURES & SITE FURNISHINGS WITH CONTEMPORARY NEEDS.





SCHEMATIC DESIGN PLAN UPDATE **FRANKLIN PARK**

November 2018

EYE STREET



Land
DAVID RUBIN

Collective

STUDIOS
architecture



POOR TREE HEALTH



DENSE CANOPY COVERAGE



PREVENTS UNIVERSAL ACCESSIBILITY



DETERIORATING PATHS



ACTIVATED FOUNTAIN PLAZA



COMPACTED SOILS

EXISTING CONDITIONS FRANKLIN PARK

November 2018



Land DAVID RUBIN **Collective**

STUDIOS
architecture



- APPROX. 15 YRS OR YOUNGER: 20%
- APPROX. 50 YRS: 20%
- APPROX. 75 YRS+: 40%
- UNKNOWN: 10%
- REMOVE PER NPS: 10%

TREE DISTRIBUTION STUDY - EXISTING FRANKLIN PARK

November 2018



Land
DAVID RUBIN

Collective

STUDIOS
architecture



- APPROX. 15 YRS OR YOUNGER: 40%
- APPROX. 20 YRS: 30%
- APPROX. 50 YRS+: 20%
- APPROX. 75+ YRS: 10%

TREE DISTRIBUTION STUDY - PROPOSED FRANKLIN PARK

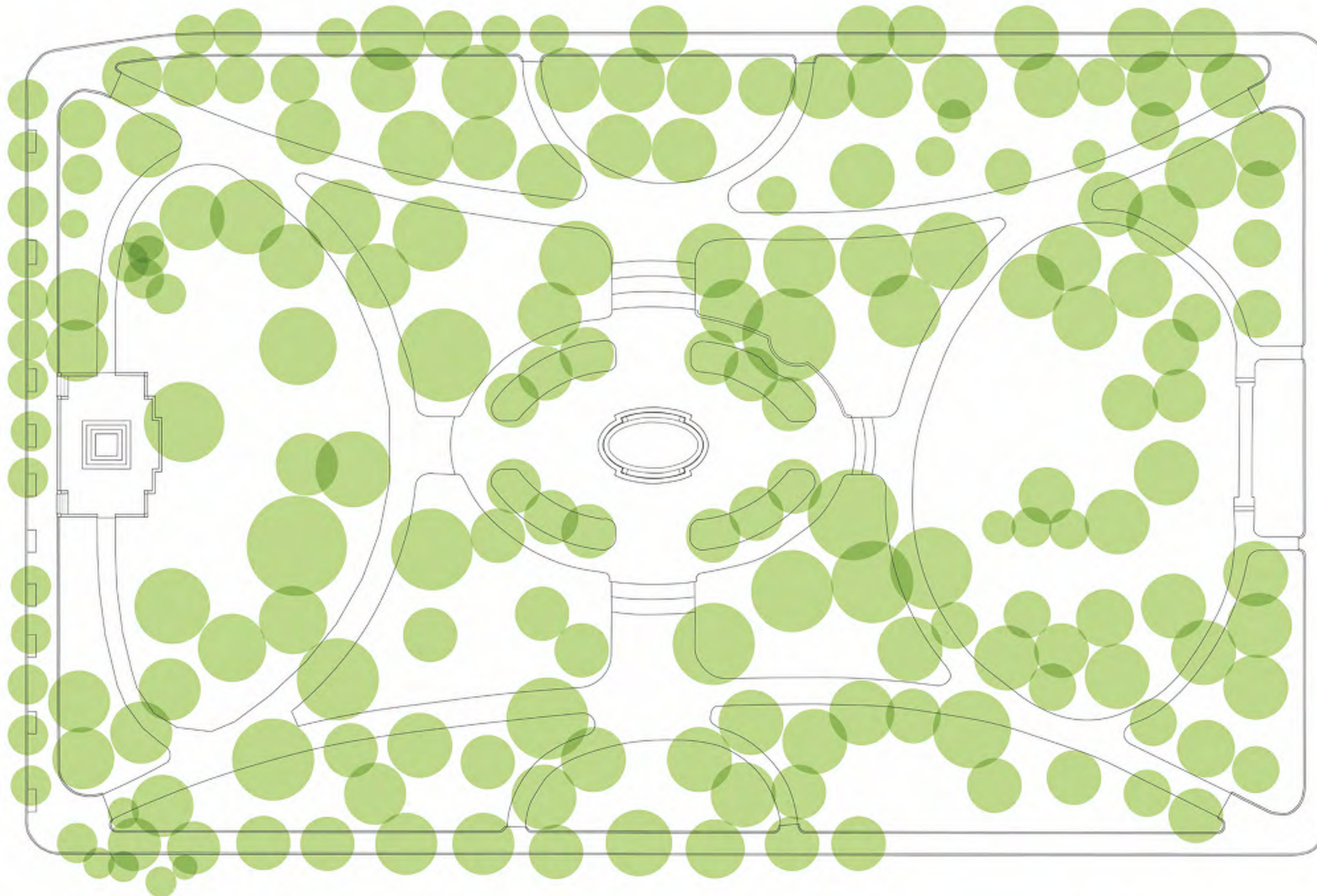
November 2018



Land
DAVID RUBIN

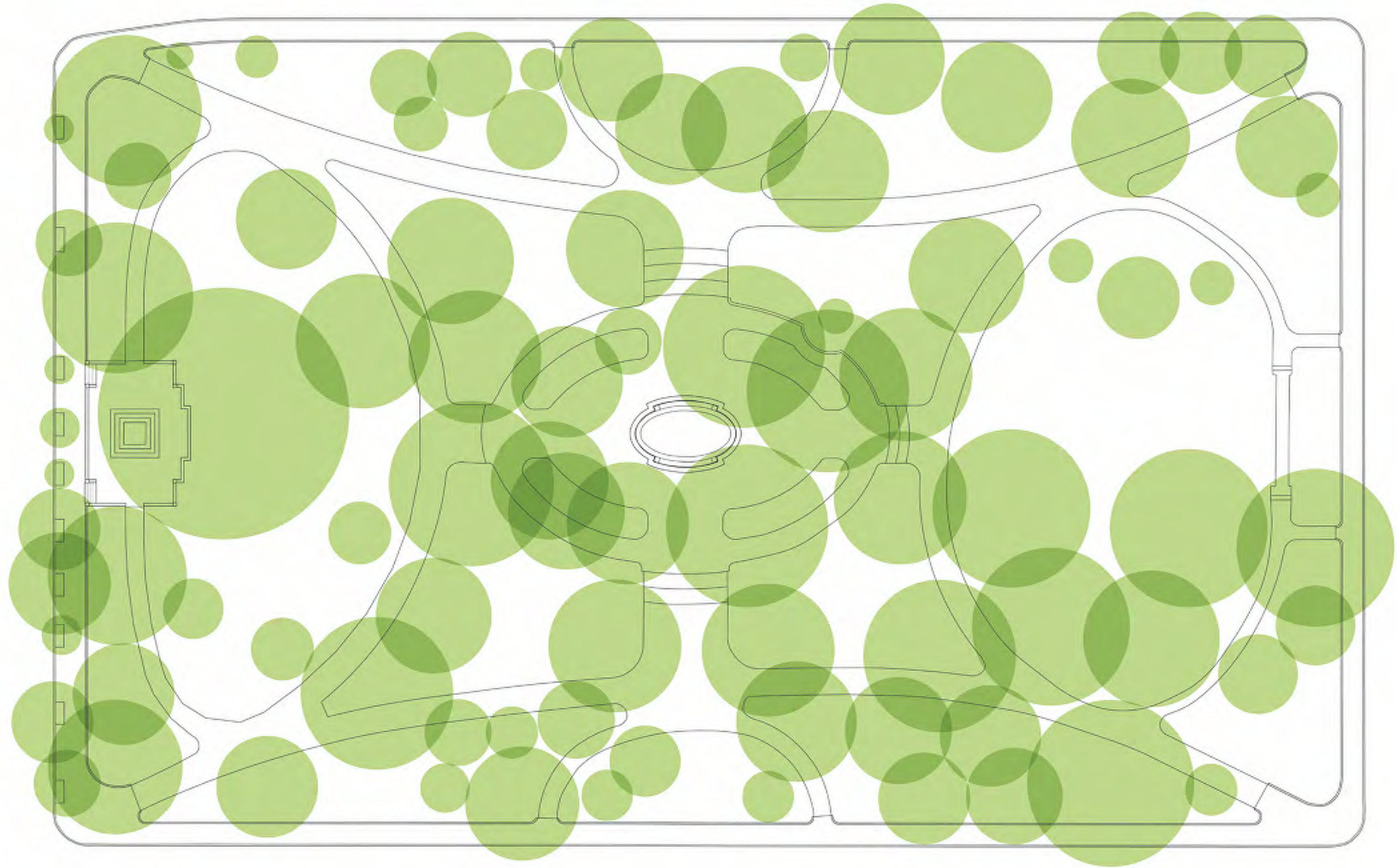
Collective

STUDIOS
architecture



TREE DISTRIBUTION STUDY - PLANTING VISION FROM 1946
FRANKLIN PARK

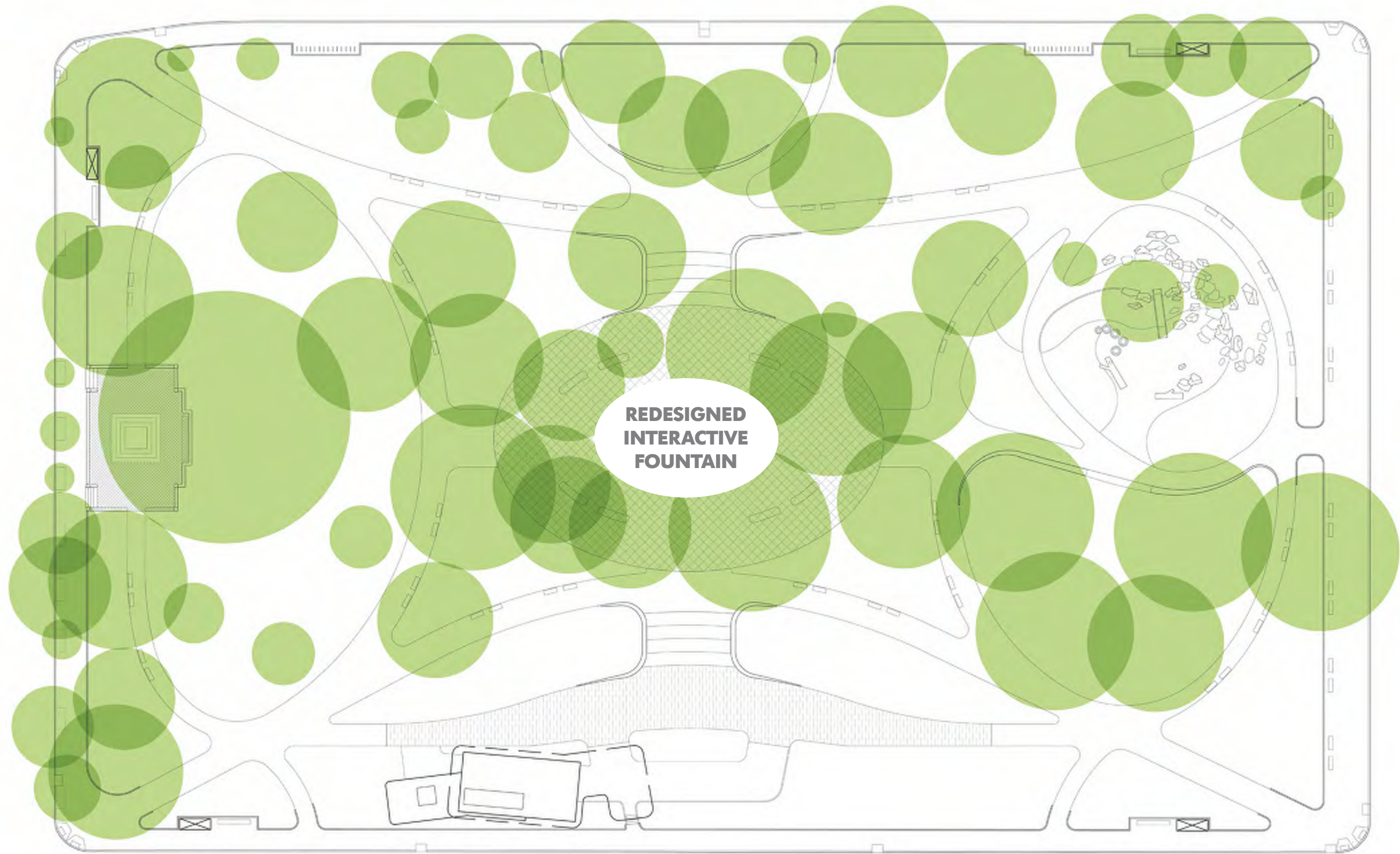
November 2018



TREE DISTRIBUTION STUDY - EXISTING CANOPY
FRANKLIN PARK
 (TREES RECOMMENDED FOR REMOVAL BY NPS ASSESSMENT)

November 2018

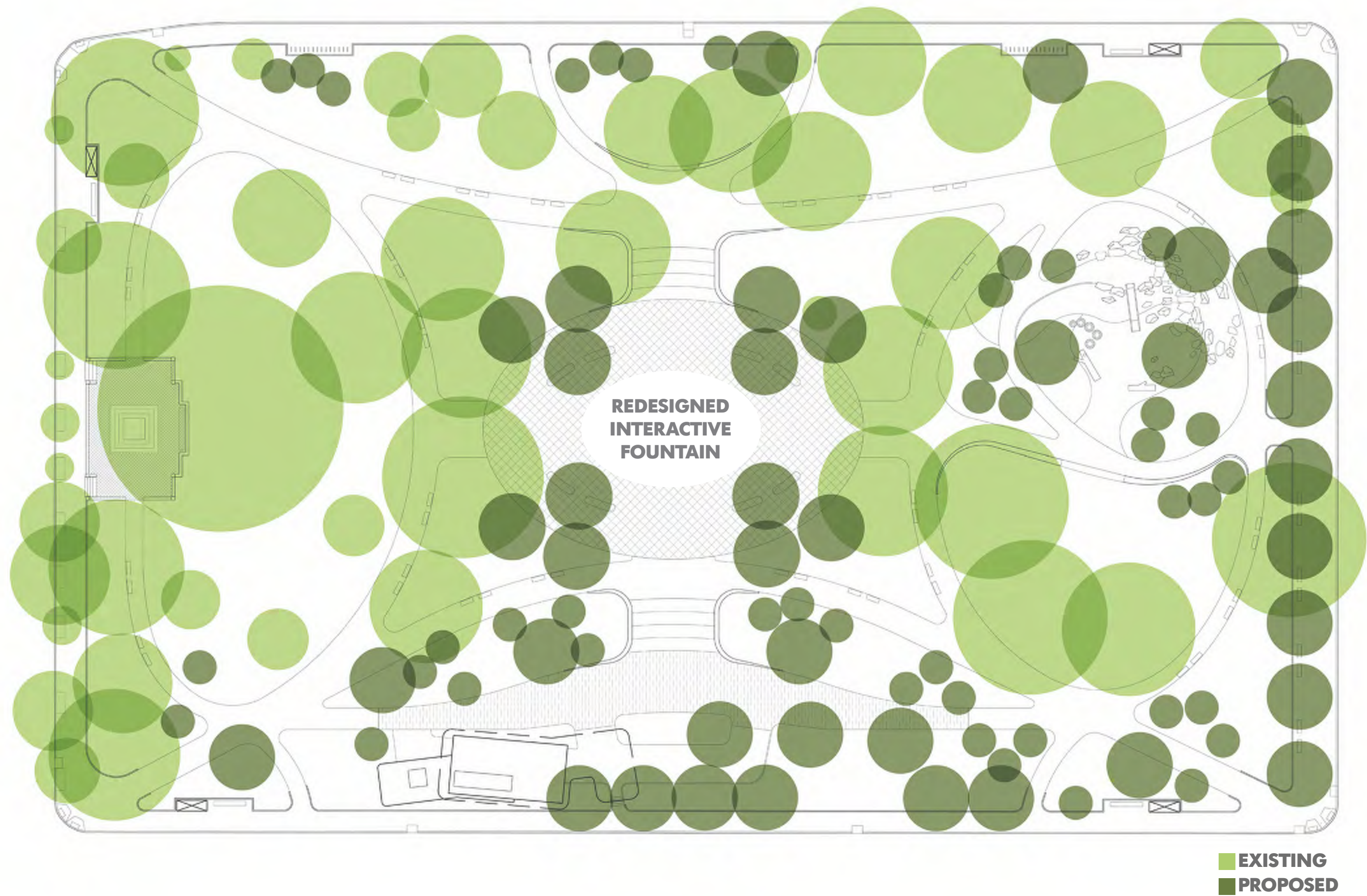




TREE DISTRIBUTION STUDY - EXISTING CANOPY
FRANKLIN PARK
 (TREES TO BE REMOVED TO MEET STORMWATER REGS)

November 2018





TREE DISTRIBUTION STUDY - PROPOSED CANOPY FRANKLIN PARK

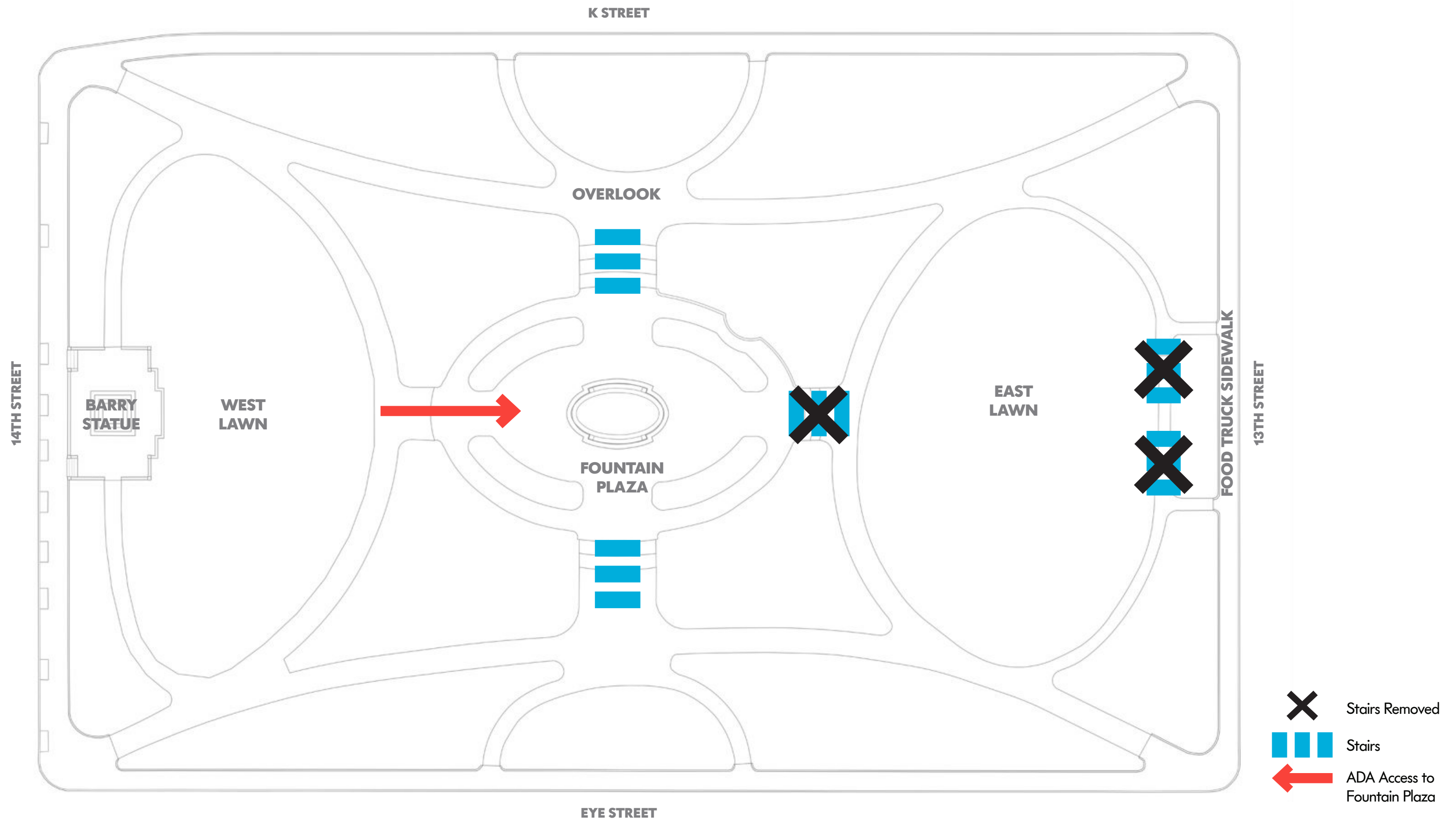
November 2018



Land
DAVID RUBIN

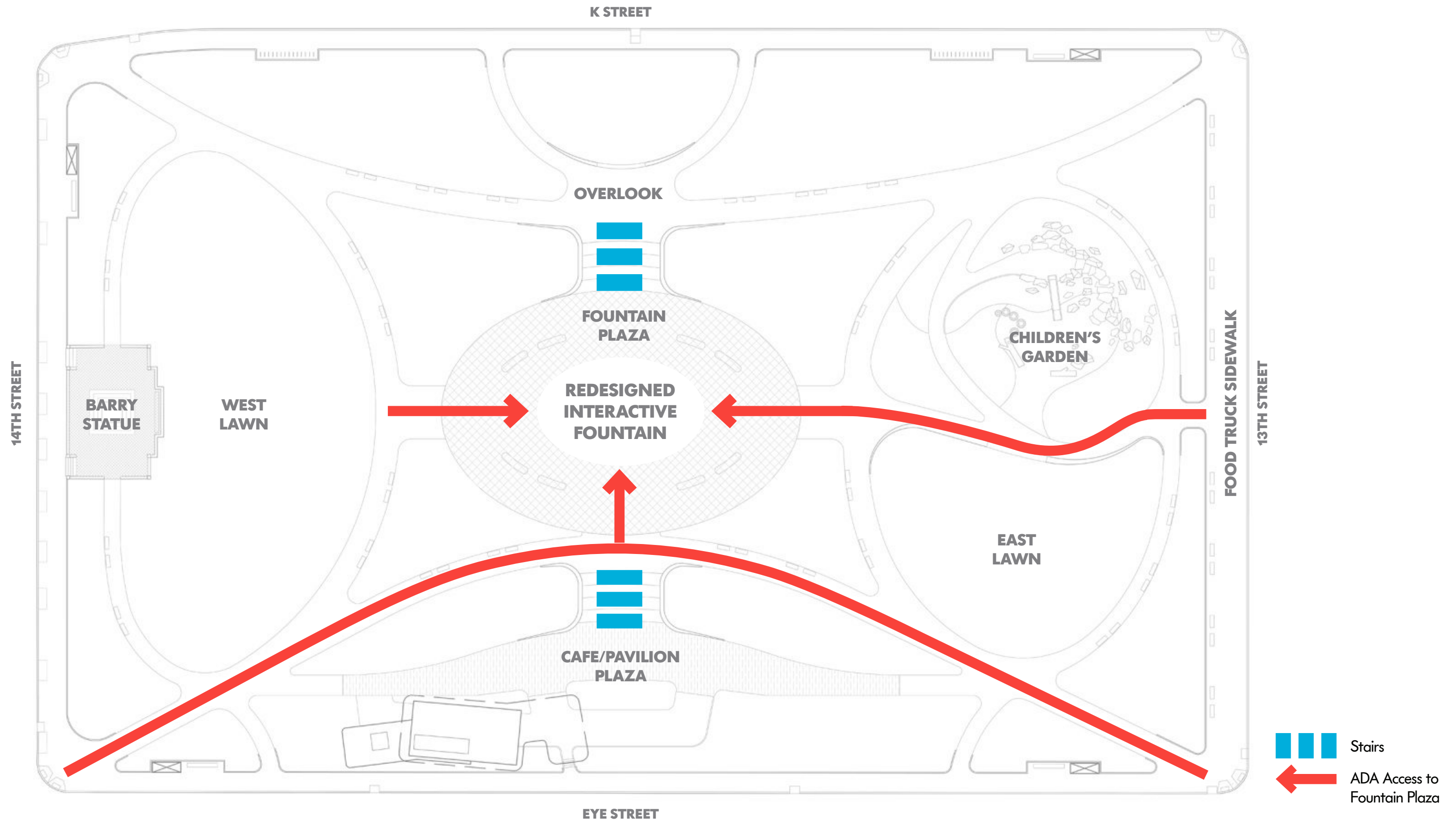
Collective

STUDIOS
architecture



CIRCULATION PATTERNS - PROPOSED ADJUSTMENTS
FRANKLIN PARK

November 2018



CIRCULATION PATTERNS - PROPOSED ADJUSTMENTS FRANKLIN PARK

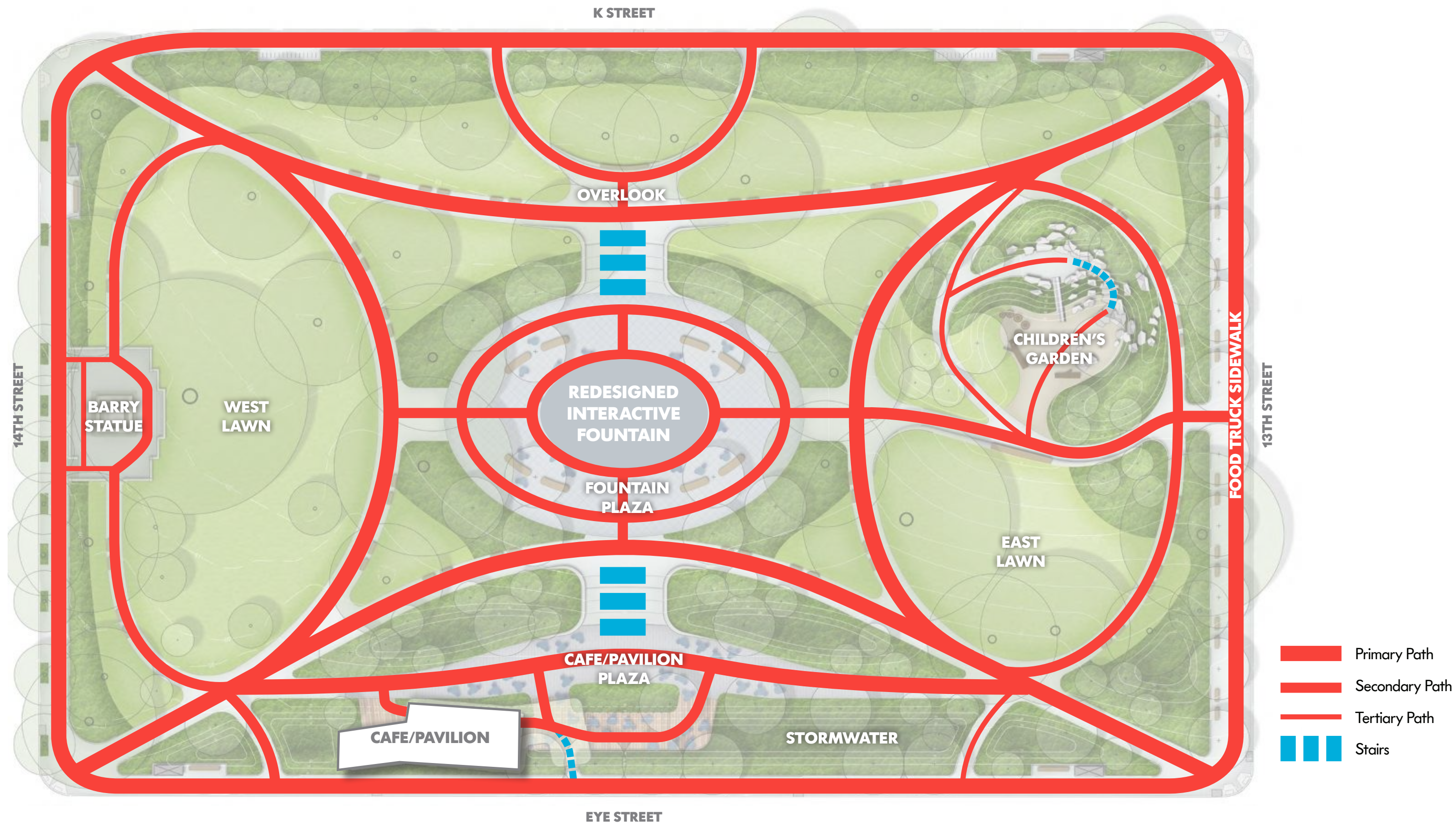
November 2018



Land
DAVID RUBIN

Collective

STUDIOS
architecture



CIRCULATION PATTERNS - PROPOSED OVERALL FRANKLIN PARK

November 2018



Land
DAVID RUBIN

Collective

STUDIOS
architecture



**REFURBISH / REPLACE
EXISTING LIGHT FIXTURES**



**REFURBISH / REPLACE
EXISTING SEATING ELEMENTS**

LIGHTING AND SITE FURNISHINGS FRANKLIN PARK

November 2018



Land
DAVID RUBIN

Collective

STUDIOS
architecture

RAIN GARDEN, CAFE/ PAVILION, CAFE/PAVILION PLAZA, & EYE ST.

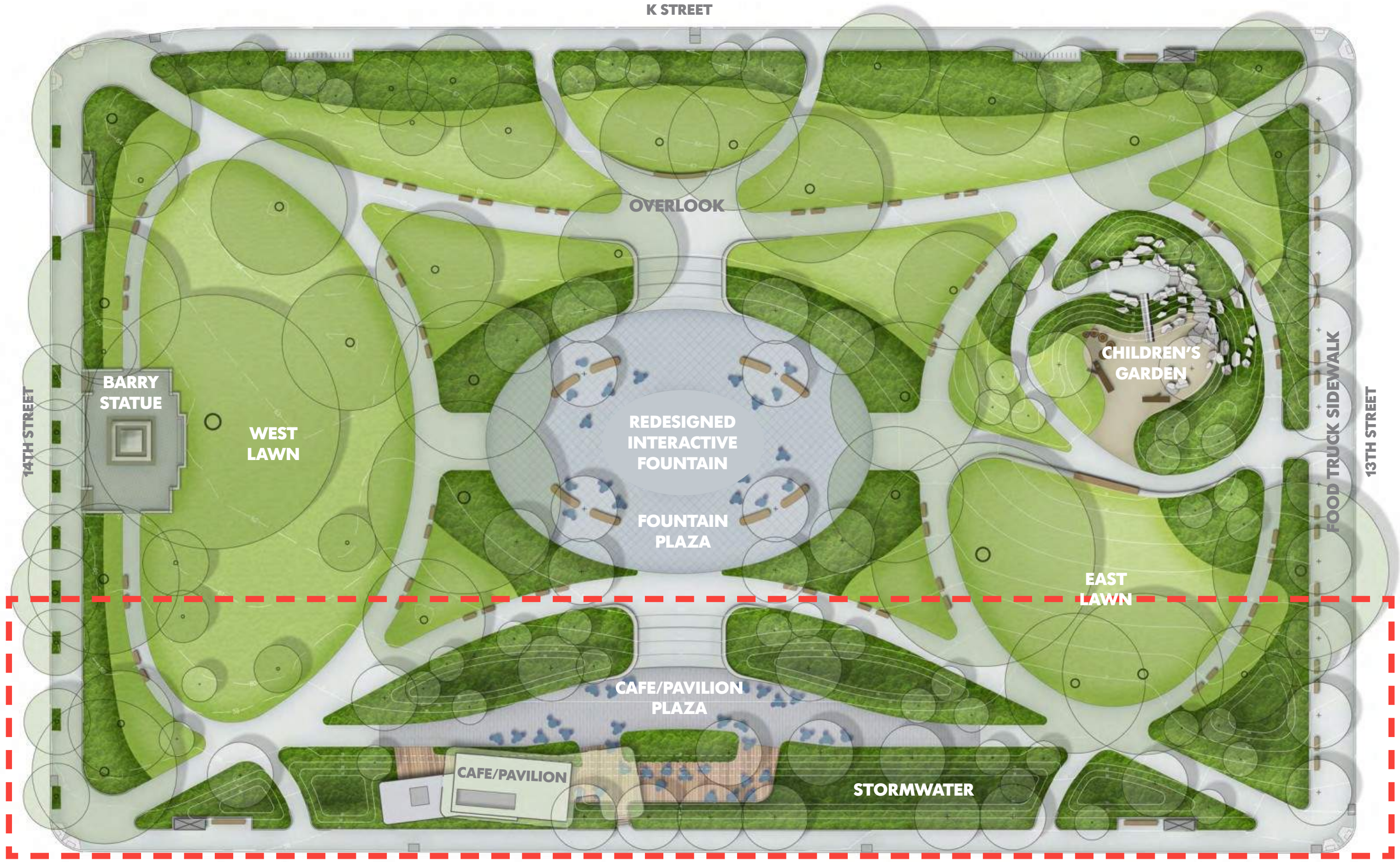
- DEVELOP A HISTORICALLY SENSITIVE STORMWATER MANAGEMENT PLAN TO INFILTRATE AND CAPTURE ALL STORMWATER THAT FALLS ON THE PARK .
- DESIGN A CONTEMPORARY CAFE WITH PUBLIC RESTROOMS, INFORMATION BOOTH, AND MAINTENANCE SPACE.
- RESPECT IMPORTANT VIEWS TOWARD THE CENTRAL FOUNTAIN THROUGH THE STRUCTURES PHYSICAL LOCATION AND MATERIALITY.
- INTRODUCE A NEW, VERSATILE SOUTHERN PLAZA FOR DAYTIME AND EVENING EVENTS & PROGRAMMING.
- ENHANCE PARK CONNECTIONS TO THE ADJACENT STREETScape AND PUBLIC REALM, INCLUDING MULTIPLE TRANSPORTATION MODES.



Land DAVID RUBIN

Collective

STUDIOS
architecture



SCHEMATIC DESIGN
FRANKLIN PARK

November 2018



Land
DAVID RUBIN

Collective

STUDIOS
architecture



NARROW SIDEWALKS



HEAVY BUS USE ALONG EYE STREET



COMPACTED SOILS



BUS SHELTER LOCATIONS



OBVIOUS DESIRE LINES



MISCELLANEOUS INFRASTRUCTURE

EXISTING CONDITIONS FRANKLIN PARK

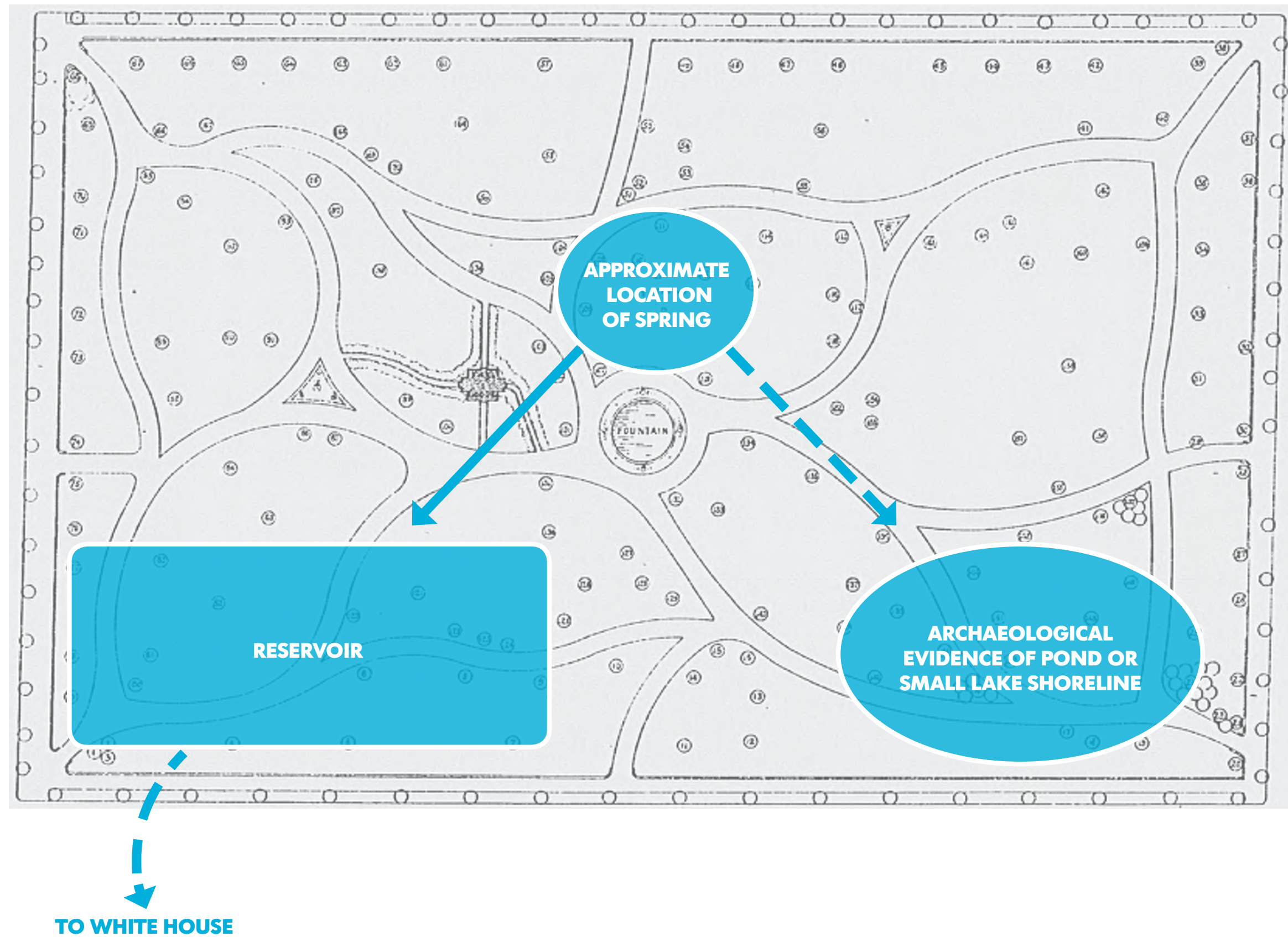
November 2018



Land
DAVID RUBIN

Collective

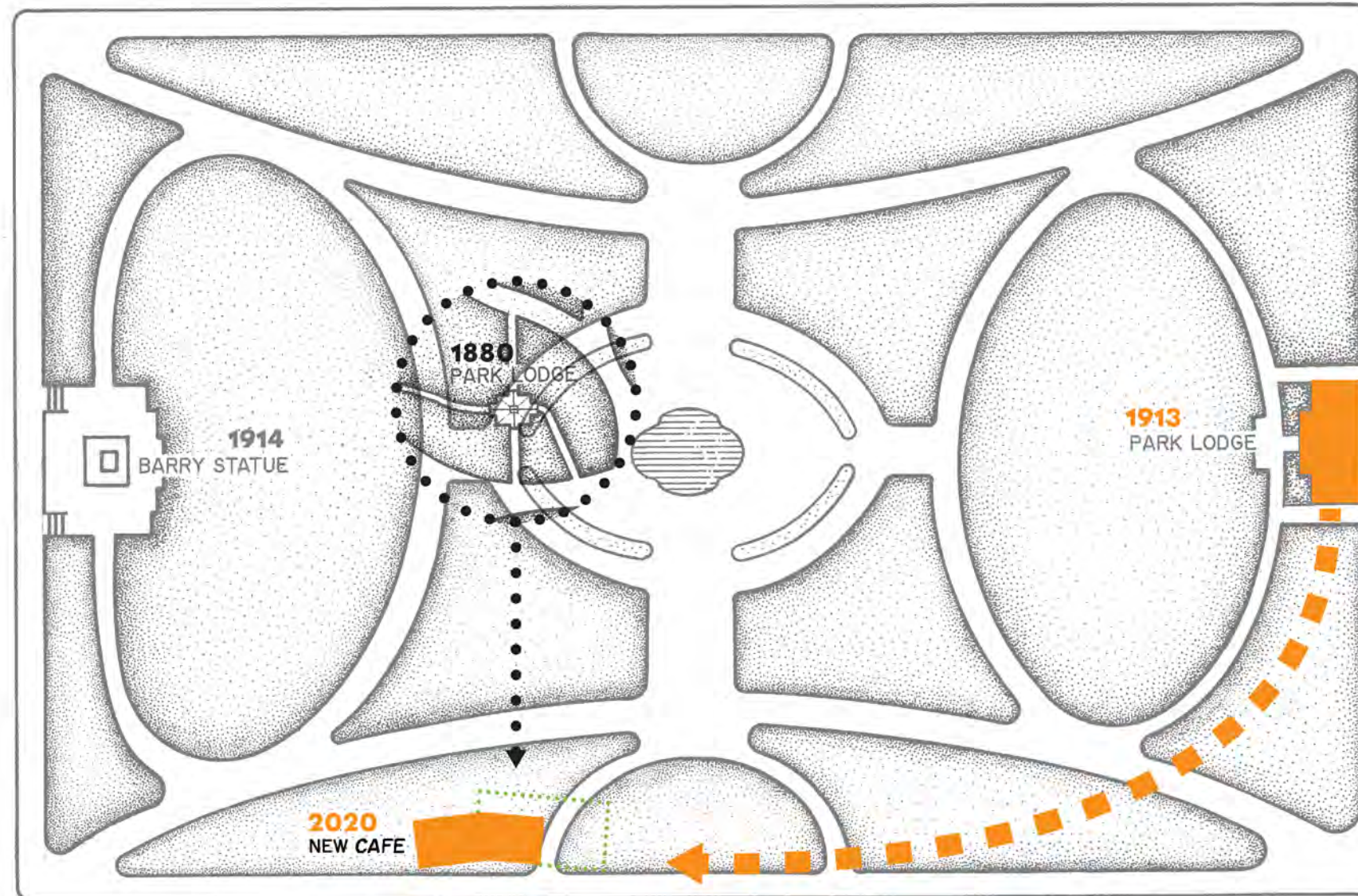
STUDIOS
architecture



**HISTORIC WATER INFRASTRUCTURE SYSTEM
FRANKLIN PARK**

November 2018

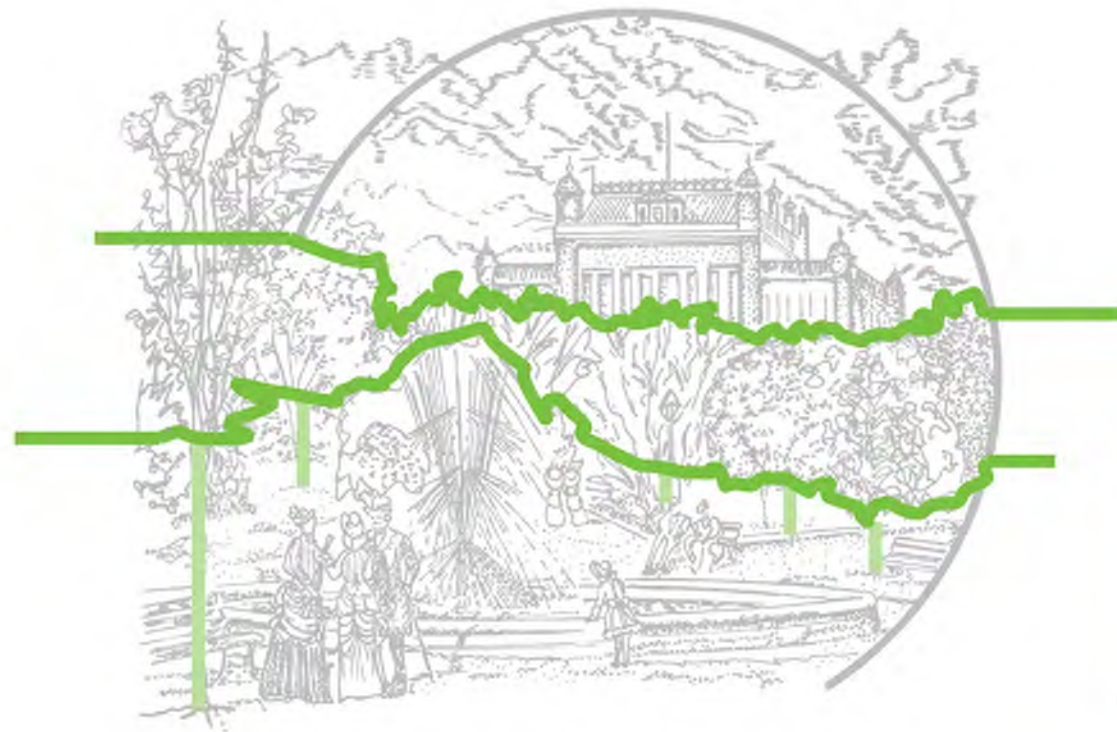




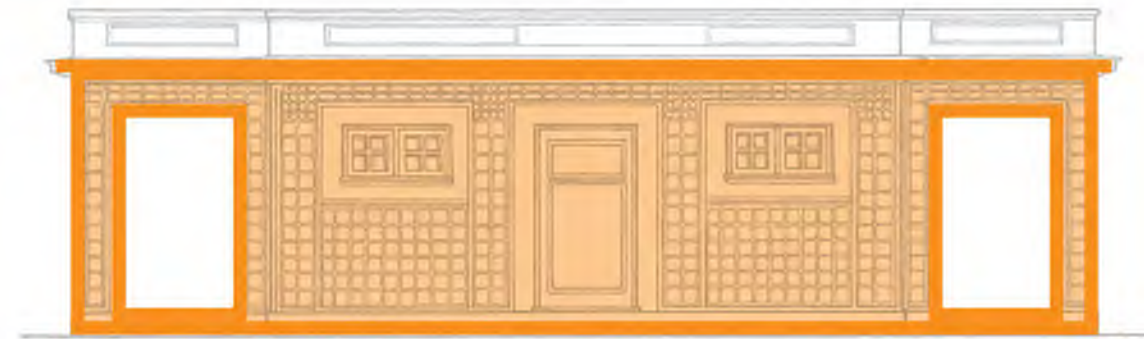
CAFE - SCALE OF 20TH CENTURY PARK LODGE **FRANKLIN PARK**

November 2018

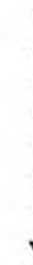




ETCHING OF FRANKLIN PARK, CA. 1890.



PARK LODGE FOR LAFAYETTE, FRANKLIN, JUDICIARY AND LINCOLN PARKS, 1913. GEORGE BURNAP, LANDSCAPE ARCHITECT; HORACE PEASLEE, ARCHITECT



DESIGN FOR A CAFE, 2018

CAFE CONCEPT - TREE CANOPY AND LODGE FRANKLIN PARK

November 2018



Land
DAVID RUBIN

Collective

STUDIOS
architecture

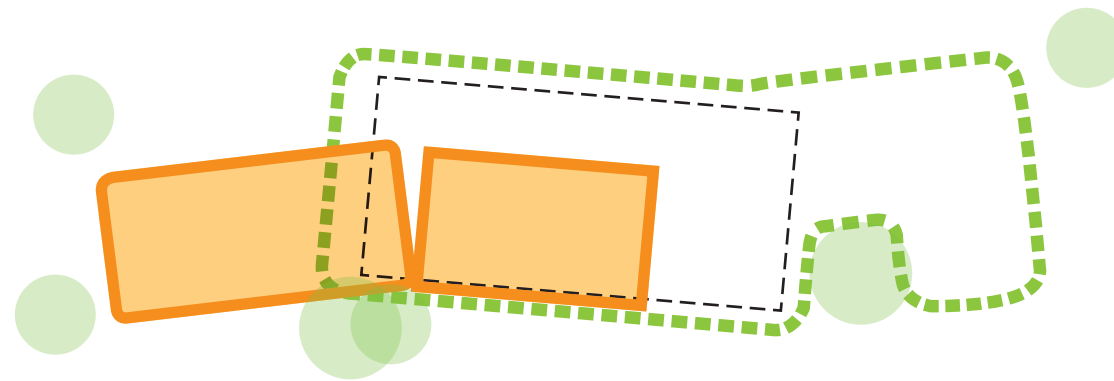
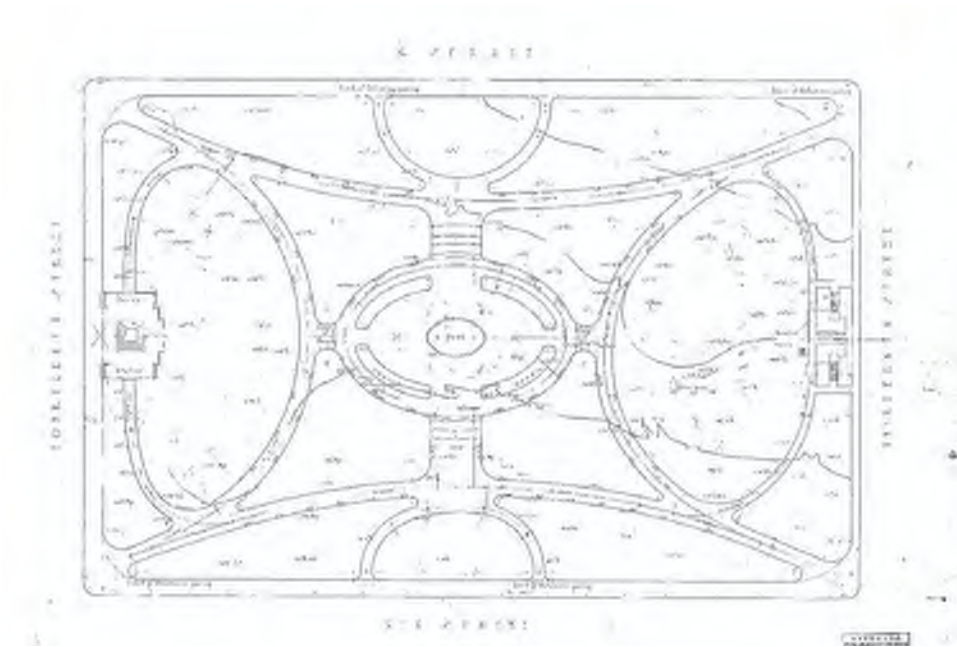
ORGANIC GEOMETRY



TRANSITION



LINEAR I STREET

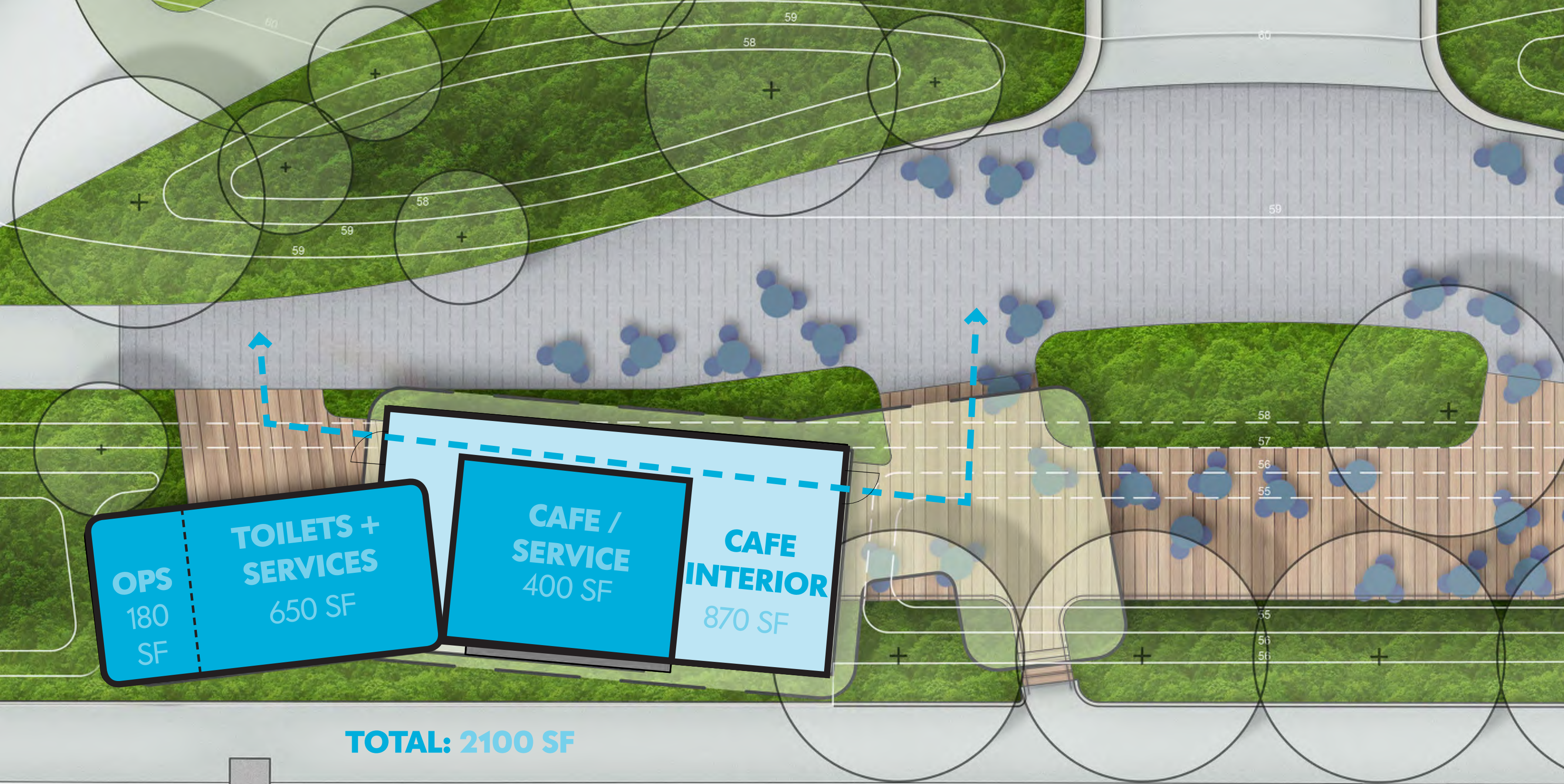


SOFTENED EDGES BEND IN
SUBORDINATE ROLE WITHIN THE PARK

FOCUS TOWARD THE PARK WHILE
ACKNOWLEDGING I STREET

RESPECTS HISTORIC SYMMETRY AND
DOES NOT OBSTRUCT VIEWS TOWARD THE
CENTRAL FOUNTAIN





CAFE - PROGRAM DIAGRAM **FRANKLIN PARK**

November 2018



Land
DAVID RUBIN

Collective

STUDIOS
architecture



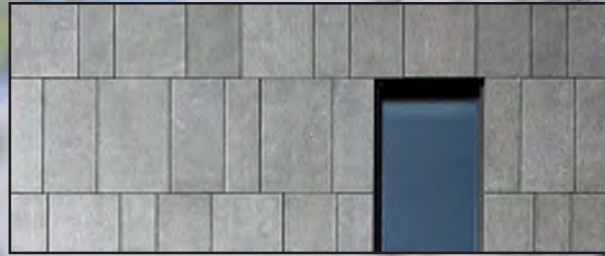
3/32" = 1'-0"



WOOD
PROTECTED NATURAL OR SIMULATED WOOD
SIM: DECKING



GLASS
LOW-E COATED, CLEAR GLASS



STONE
NATURAL OR SIMULATED STONE,
SIM: PRECAST PAVERS



GREEN ROOF
LIGHTWEIGHT EXTENSIVE GREEN ROOF SYSTEM



DARK METAL
COATED ALUMINUM AND STEEL
SIM: HISTORIC LIGHTPOLES AND BENCHES

ARCHITECTURAL MATERIALS

LANDSCAPE MATERIALS

FLAGSTONE
FOUNTAIN PLAZA



PRECAST PAVERS
PEDESTRIAN MALL



CONCRETE WALKS
PRIMARY PATHS



DARK METAL
SMALL-SCALE FEATURES



CONCRETE PAVERS
DOWNTOWN DC SIDEWALK STANDARD



**WEST LAWN LOOKING SOUTHEAST
FRANKLIN PARK**

November 2018



Land
DAVID RUBIN

Collective

STUDIOS
architecture



**CAFE PLAZA LOOKING SOUTHWEST
FRANKLIN PARK**

November 2018





I STREET NEAR 14TH STREET LOOKING NORTHEAST
FRANKLIN PARK

November 2018



Land
DAVID RUBIN

Collective

STUDIOS
architecture



**I STREET LOOKING NORTHWEST
FRANKLIN PARK**

September 2018



Land
DAVID RUBIN

Collective

STUDIOS
architects



CAFE PLAZA
FRANKLIN PARK

November 2018



Land
DAVID RUBIN

Collective

STUDIOS
architecture



CAFE PLAZA
FRANKLIN PARK

November 2018



DOWNTOWNDC

Land
DAVID RUBIN

Collective

STUDIOS
architecture



CAFE PLAZA
FRANKLIN PARK

November 2018



DOWNTOWNDC

Land
DAVID RUBIN

Collective

STUDIOS
architecture



RAINGARDEN DIAGRAM FRANKLIN PARK

November 2018



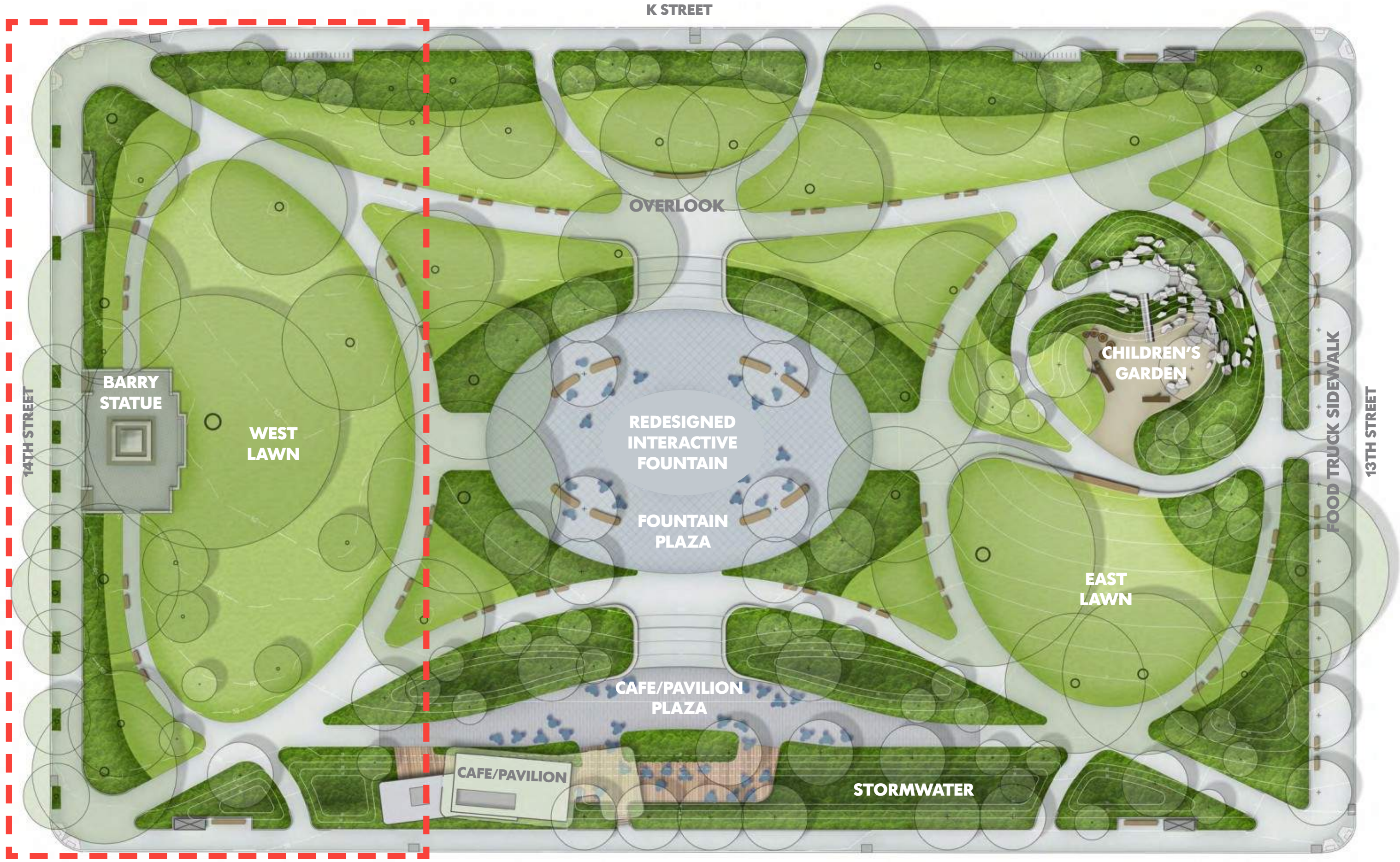
Land DAVID RUBIN **Collective**

STUDIOS
architecture

WEST LAWN & EVENT PROGRAMMING

- PRESERVE & RESTORE THE COMMODORE JOHN BARRY STATUE
- PROVIDE THE INFRASTRUCTURE NECESSARY TO ACCOMMODATE DIVERSE COMMUNITY EVENTS AND PROGRAMING WITHIN THE WEST LAWN, AS WELL AS OTHER PARK SPACES.





SCHEMATIC DESIGN
FRANKLIN PARK

November 2018

EYE STREET



OBVIOUS DESIRE LINES



SETTLING PAVEMENT AT BARRY STATUE



DETERIORATING PATHS



LAWN FOR ACTIVITIES



SITE DRAINAGE ISSUES



HISTORIC VIEWS

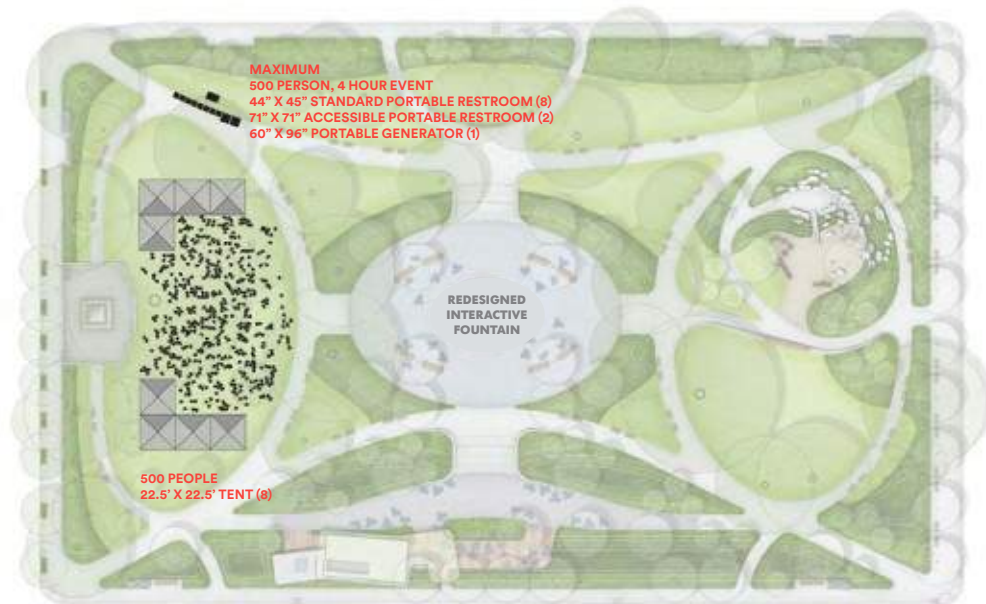
EXISTING CONDITIONS FRANKLIN PARK

November 2018

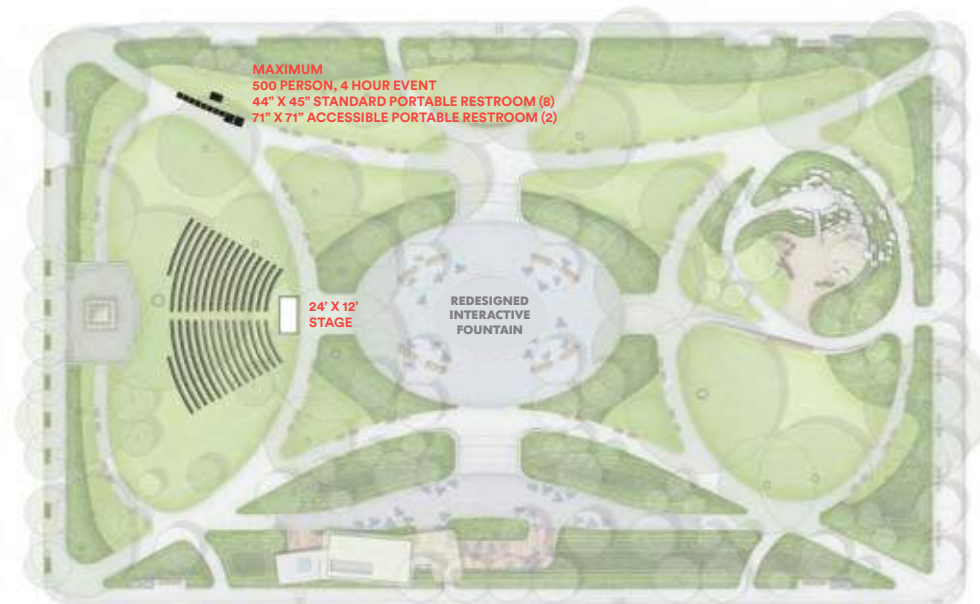


Land **Collective**
DAVID RUBIN

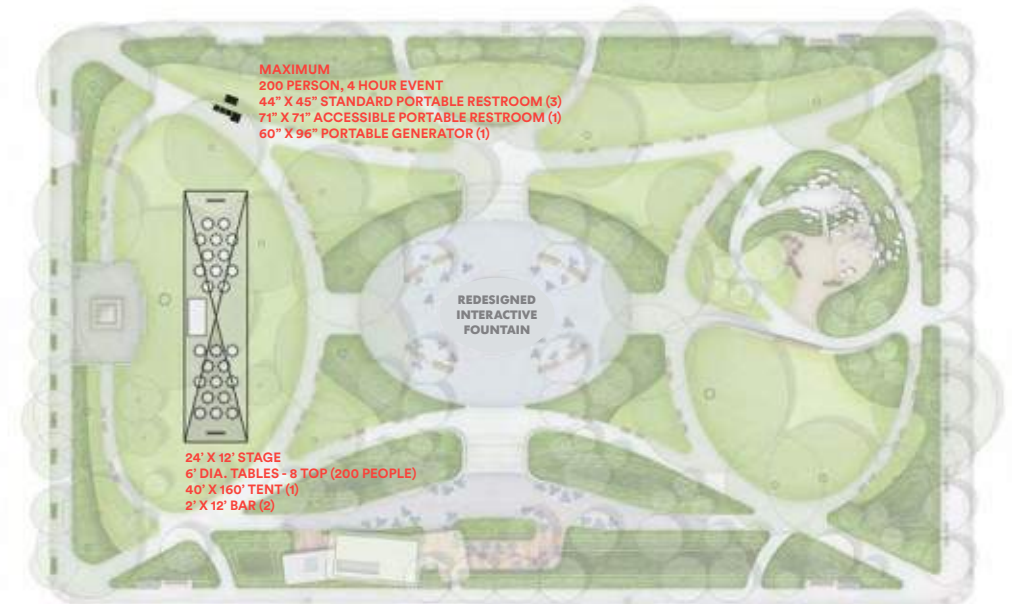
STUDIOS
architecture



PROGRAM STUDY - 500 PERSON EVENT



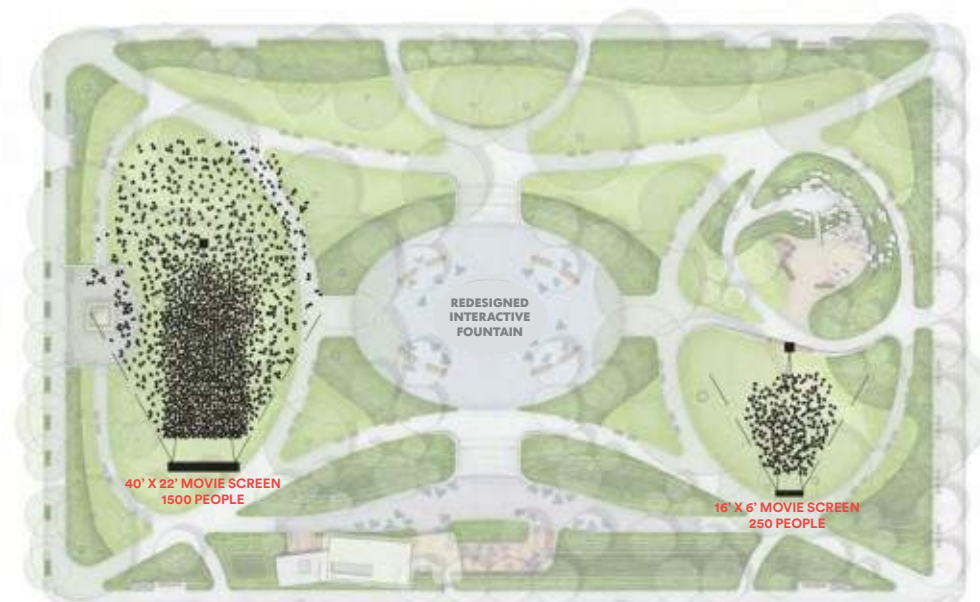
PROGRAM STUDY - 500 PERSON CEREMONY



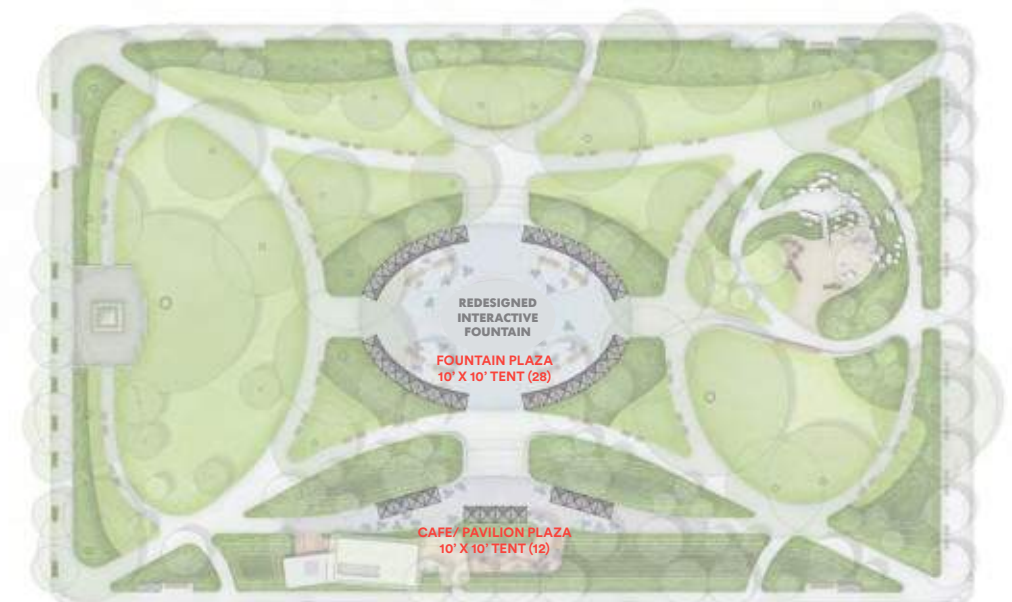
PROGRAM STUDY - 200 PERSON EVENT WITH MEGA-TENT



PROGRAM STUDY - 200 PERSON EVENT



PROGRAM STUDY - MOVIE NIGHT



PROGRAM STUDY - MARKET FESTIVALS

PROGRAM STUDY **FRANKLIN PARK**

November 2018



Land
DAVID RUBIN

Collective

STUDIOS
architecture

EAST LAWN, 13TH ST. IMPROVEMENTS, CHILDREN'S GARDEN & OVERLOOK

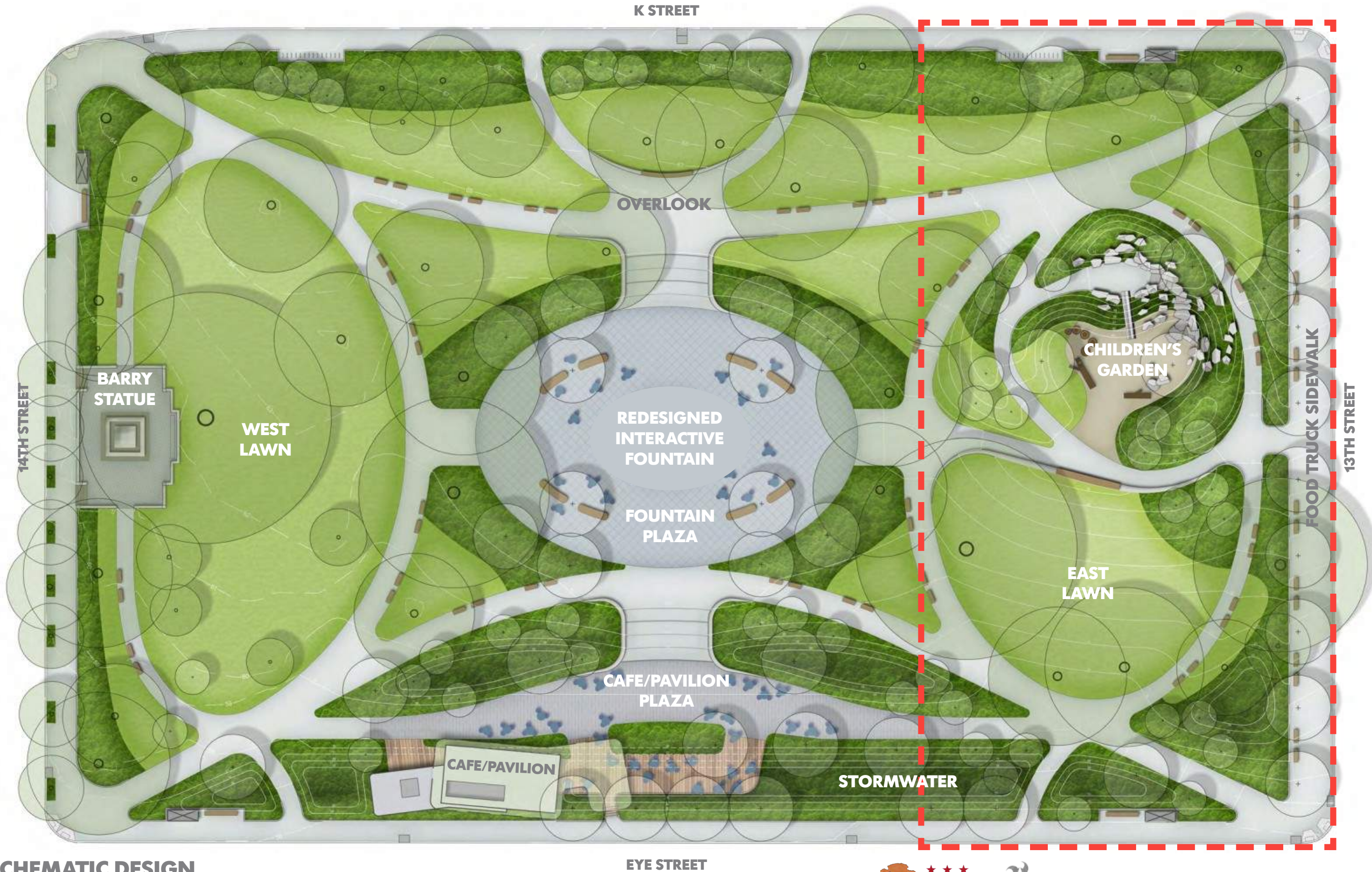
- ENHANCE THE STREETScape TO BETTER ACCOMMODATE EXISTING POP-UP VENDORS AND FOOD TRUCKS.
- REFURBISH AND REUSE THE HISTORIC BENCHES TO FOSTER GREATER SOCIAL INTERACTION AND ALLOW UNIVERSAL ACCESSIBILITY.
- DRAW FROM EXISTING SITE DETAILS TO INFORM NEW PARK FEATURES.
- RESTORE THE EXISTING LAWN TO CREATE A MORE DESIRABLE AREA FOR DAYTIME PICNICKING AND EVENING MOVIE NIGHTS.
- DESIGN A CHILDREN'S GARDEN TO BE COMPATIBLE WITH THE OVERALL CHARACTER OF THE PARK USING NATURAL MATERIALS INCLUDING PLANTING, BOULDERS, LOGS, AND TOPOGRAPHIC FEATURES.



Land
DAVID RUBIN

Collective

STUDIOS
architecture



SCHEMATIC DESIGN
FRANKLIN PARK

November 2018



Land
DAVID RUBIN

Collective

STUDIOS
architecture



ROLLED CURB AT ENTRY POINTS



STREETSCAPE CONDITION



PREVENTS UNIVERSAL ACCESSIBILITY



COMPACTED SOILS



LAWN CONDITIONS



NARROW SIDEWALK

EXISTING CONDITIONS FRANKLIN PARK

November 2018



Land DAVID RUBIN **Collective**

STUDIOS
architecture



**EAST LAWN
FRANKLIN PARK**

November 2018



20'-0" Proposed Sidewalk

10'-0" Existing Sidewalk

13TH STREET IMPROVEMENTS FRANKLIN PARK

November 2018



Land
DAVID RUBIN

Collective

STUDIOS
architecture



**EAST LAWN
FRANKLIN PARK**

November 2018



DOWNTOWNDC

Land
DAVID RUBIN

Collective

STUDIOS
architecture



**EAST LAWN
FRANKLIN PARK**

November 2018



DOWNTOWNDC

Land
DAVID RUBIN

Collective

STUDIOS
architecture



**EAST LAWN
FRANKLIN PARK**

November 2018



DOWNTOWNDC

Land
DAVID RUBIN

Collective

STUDIOS
architecture



CHILDREN'S GARDEN
FRANKLIN PARK

November 2018





CHILDREN'S GARDEN
FRANKLIN PARK

November 2018



Land
DAVID RUBIN

Collective

STUDIOS
architecture



CHILDREN'S GARDEN
FRANKLIN PARK

November 2018



DOWNTOWNDC

Land
DAVID RUBIN

Collective

STUDIOS
architecture



CHILDREN'S GARDEN
FRANKLIN PARK

November 2018



Land
DAVID RUBIN

Collective

STUDIOS
architecture

FOUNTAIN & CENTRAL PLAZA

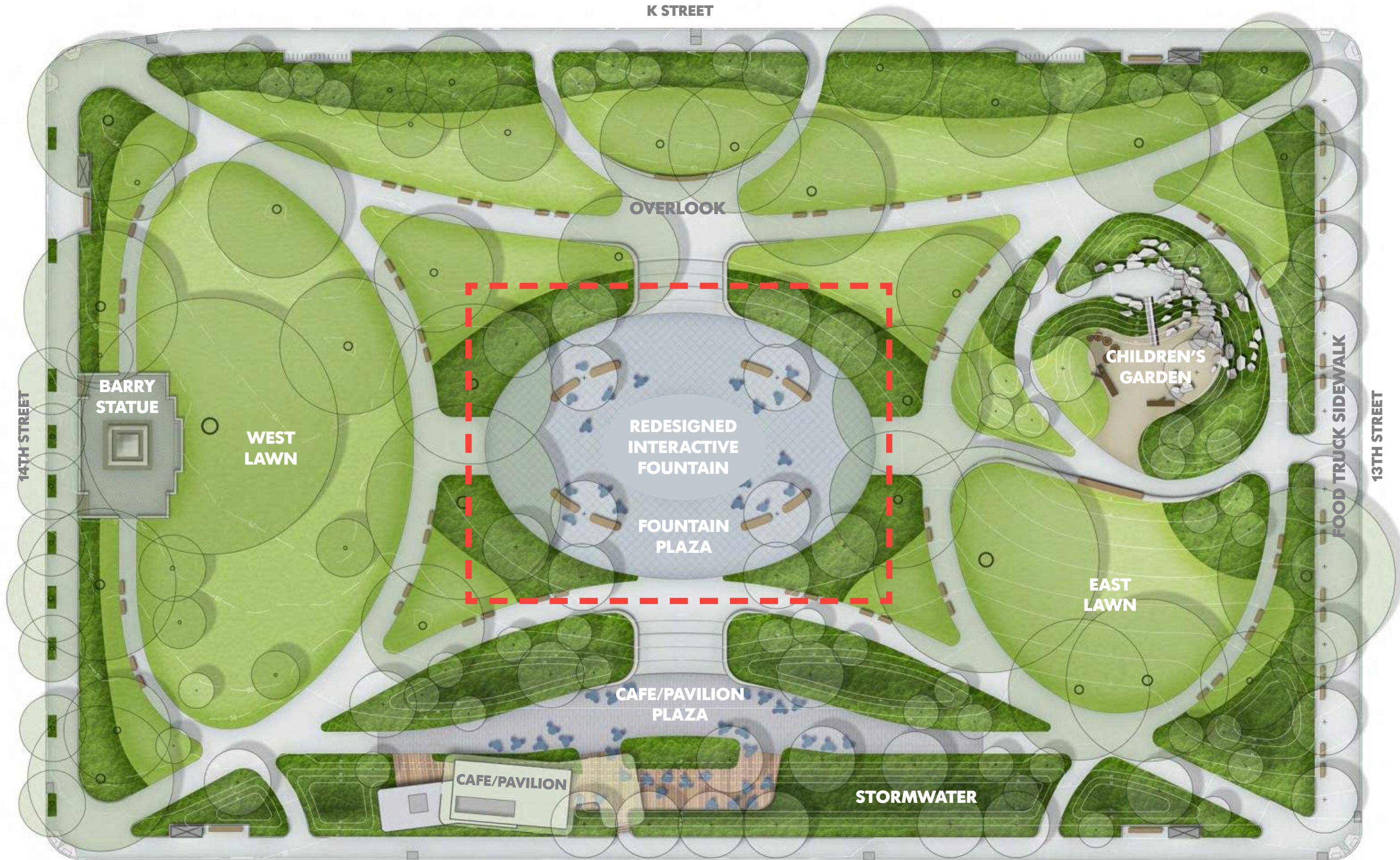
- MAINTAIN THE FOUNTAIN AS THE CENTRAL FEATURE OF THE PARK.
- REDESIGN AND REHABILITATE THE FOUNTAIN TO ALLOW FOR PARK USERS TO ENGAGE & ENJOY THE WATER.
- REFERENCING HISTORIC FORM CAN BE CAPTURED WITH NEW INTERACTION.
- ASPIRE FOR A UNIVERSALLY ACCESSIBLE, INTERACTIVE WATER FEATURE.
- PROVIDE SUFFICIENT SPACE FOR MULTIPLE PROGRAM AND SEATING OPPORTUNITIES TO ACTIVATE THE PLAZA.
- MAINTAIN AN APPROPRIATE SCALE OF THE PLAZA SPACE.



Land
DAVID RUBIN

Collective

STUDIOS
architecture



SCHEMATIC DESIGN
FRANKLIN PARK

November 2018

EYE STREET



Land
DAVID RUBIN

Collective

STUDIOS
architecture



ICONIC FOUNTAIN VIEWS



FOUNTAIN BOWL WITH EXPOSED EQUIPMENT



UNDESIRED RETAINING WALLS



QUALITY OF WATER EXPRESSION



DETERIORATING COPING MATERIALS



SEASONAL MAINTENANCE

EXISTING CONDITIONS FRANKLIN PARK

November 2018

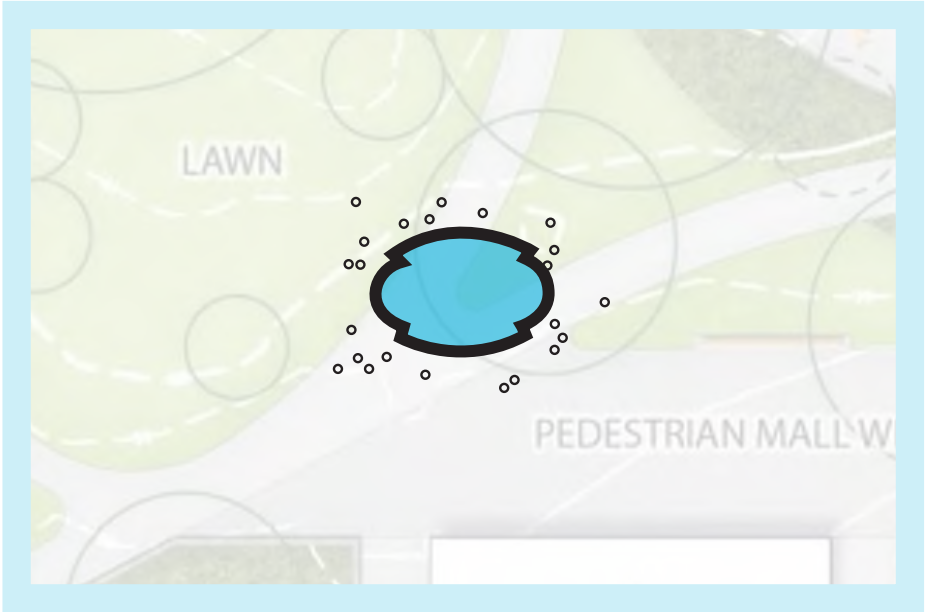


Land
DAVID RUBIN

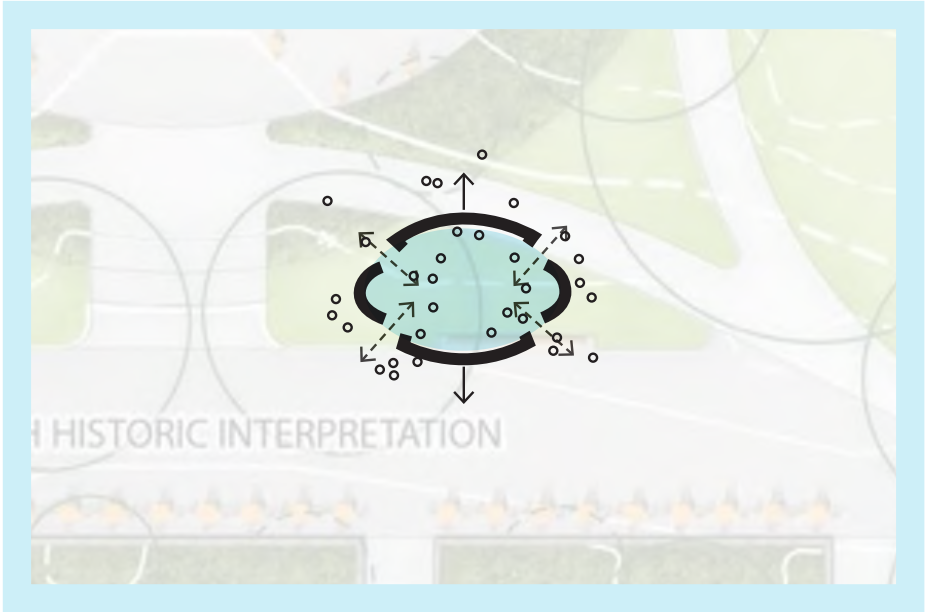
Collective

STUDIOS
architecture

FOUNTAIN AS OBJECT (CURRENT)



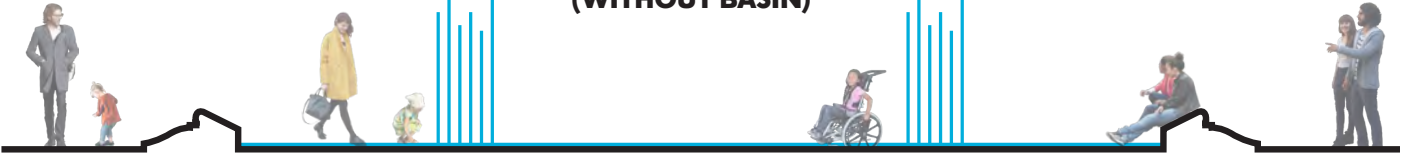
FOUNTAIN AS PLACE-MAKING



NON-ACCESSIBLE FOUNTAIN WITH BASIN



UNIVERSALLY ACCESSIBLE FOUNTAIN (WITHOUT BASIN)



UNUSABLE IN OFF-SEASON

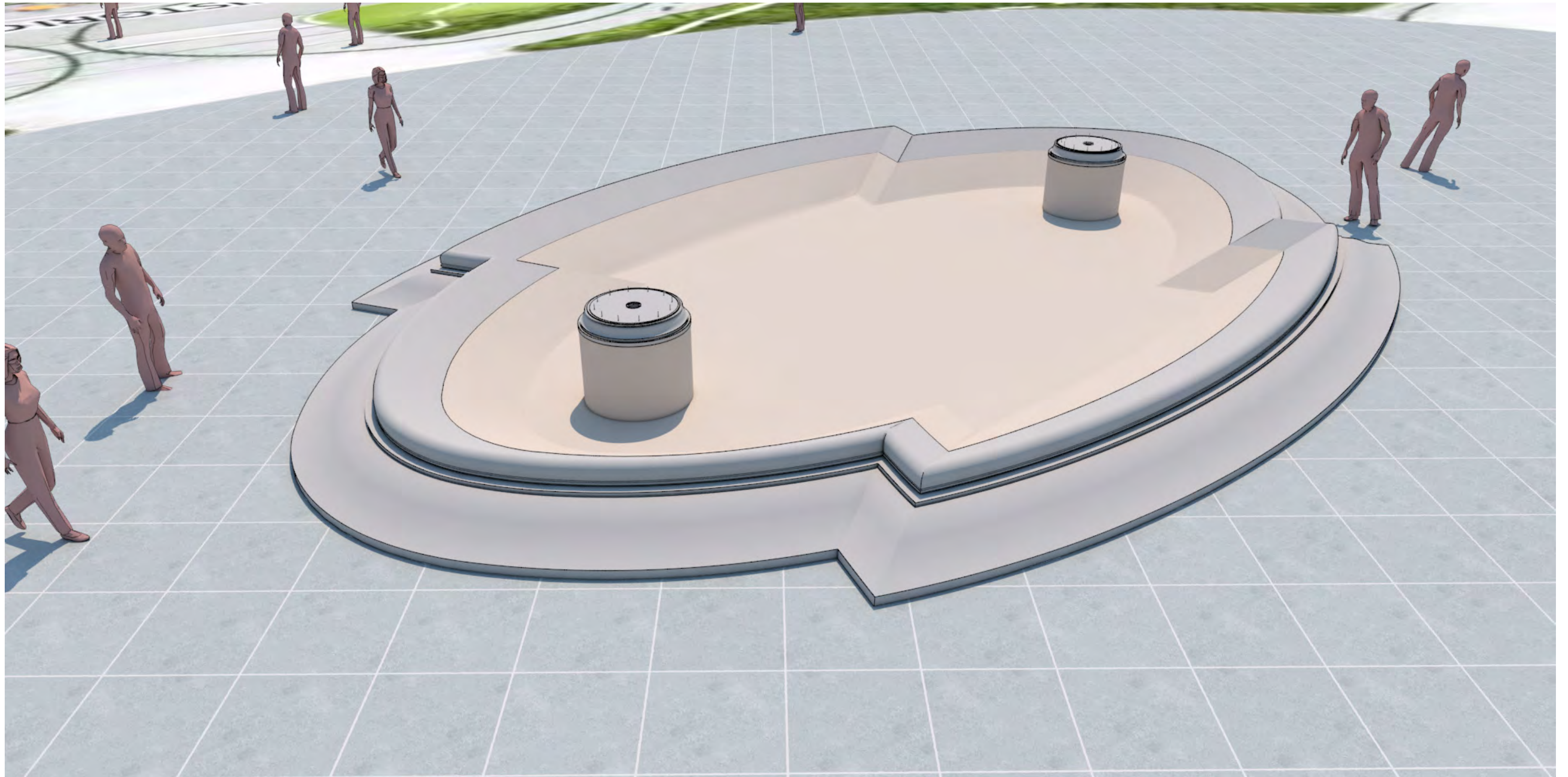


PROGRAMMABLE IN OFF-SEASON



PROGRAMMABLE FOR EVENTS





FOUNTAIN STUDY - EXISTING CONDITIONS
FRANKLIN PARK

November 2018



DOWNTOWNDC

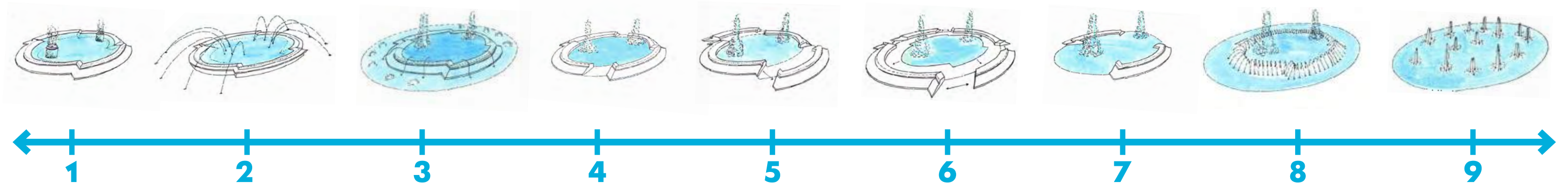
Land
DAVID RUBIN

Collective

STUDIOS
architecture

NOTE:

- The partners are in the process of evaluating a number of fountain alternatives that range from rehabilitation to complete redesign using the criteria in the associated matrix. The partners will continue to explore these options and come back for commission review of this element once a direction has been determined.





PLAZA STUDY - MASTER PLAN DESIGN
FRANKLIN PARK

November 2018



Land
DAVID RUBIN

Collective

STUDIOS
architecture



**EXISTING
CONDITION

MASTER PLAN
CONDITION**

**PLAZA STUDY - MASTER PLAN DESIGN (WITH PLANTERS REMOVED)
FRANKLIN PARK**

November 2018



DOWNTOWNDC

Land
DAVID RUBIN

Collective

STUDIOS
architecture



PLAZA STUDY - AERIAL VIEW
FRANKLIN PARK

November 2018



DOWNTOWNDC

Land
DAVID RUBIN

Collective

STUDIOS
 architecture



PLAZA STUDY - AERIAL VIEW WITH PROGRAM ACTIVATION
FRANKLIN PARK

November 2018



Land
DAVID RUBIN

Collective

STUDIOS
 architecture



SCHEMATIC DESIGN - AERIAL PERSPECTIVE
FRANKLIN PARK

November 2018



TIMELINE

Design: Spring 2018 – Summer 2019

General Contractor Procurement: Winter 2018

Next Community Meeting: Spring 2019

Groundbreaking: Fall 2019



Land
DAVID RUBIN

Collective

STUDIOS
architecture



when

Wednesday, November 14, 2018

Session I: 8:30 a.m. - 10:00 a.m.

Session II: 6:00 p.m. - 8:00 p.m.

where

Session I:

One Franklin Square
1301 K Street NW
Washington, DC 20071

Session II:

The Hamilton Hotel
1001 14th Street NW
Washington, DC 20005

The National Park Service (NPS), the D.C. Department of General Services, the D.C. Office of Planning, the D.C. Department of Parks and Recreation and the Downtown BID are hosting two public meetings, on Wednesday, November 14, 2018 from 8:30 a.m. to 10:00 a.m. at One Franklin Square, 1301 K Street NW, Washington DC, 20071 and from 6:00 p.m. to 8:00 p.m. at the Hamilton Hotel, 1001 14th Street NW, Washington, DC, 20005 to present concept designs for the restoration and transformation of Franklin Park. The Franklin Park concept designs were developed based on desired park uses and programs prioritized from both public comments submitted to NPS and feedback received at prior Franklin Park community meetings.

For more information about the Franklin Park Vision and Transformation Plan, please visit: parkplanning.nps.gov/FranklinPark



Land
DAVID RUBIN

Collective

STUDIOS
architecture