

## APPENDICES



## **APPENDIX A. PUBLIC SCOPING SUMMARY**



1                                    **Pea Ridge National Military Park**  
2                                    **Highway 62 Mitigations Environmental Assessment**  
3                                    **Public Scoping Summary**

4  
5  
6  
7                                    **Prepared for—**

8  
9                                    National Park Service  
10                                  Denver Service Center  
11                                  P.O. Box 25287  
12                                  Denver, Colorado 80225-0287

13  
14  
15                                  **Prepared by—**

16  
17                                  ERO Resources Corporation  
18                                  1842 Clarkson Street  
19                                  Denver, Colorado 80218  
20                                  (303) 830-1188

21  
22  
23  
24                                  September 22, 2014

1                                    **Pea Ridge National Military Park**  
2                                    **Highway 62 Mitigations Environmental Assessment**  
3                                    **Public Scoping Summary**

4                                    **September 22, 2014**  
5

6                                    **Introduction**  
7

8                                    Pursuant to Section 101(2)(C) of the National Environmental Policy Act of 1969, as amended  
9                                    (NEPA), the National Park Service (NPS) is preparing a Highway 62 Mitigations Environmental  
10                                    Assessment and Assessment of Effect (EA/AoE) for the Pea Ridge National Military Park  
11                                    (park). In preparing this EA/AoE, the NPS is following the planning process as required by  
12                                    NEPA and as provided for in agency guidance, Director's Order #12: Conservation Planning,  
13                                    Environmental Impact Analysis and Decision-Making and Handbook (Handbook; NPS 2011).  
14                                    The NPS will examine a range of feasible alternatives and evaluate potential impacts on the  
15                                    resources in the EA/AoE.  
16

17                                    **Scoping Announcements**

18                                    ***Agency and Tribal***  
19

20                                    Agency scoping for the EA/AoE began with a scoping letter sent on June 24, 2014 to the  
21                                    Arkansas Historic Preservation Program (SHPO), Advisory Council on Historic Preservation  
22                                    (ACHP), and US Fish and Wildlife Service (USFWS) to solicit input on issues of concern (see  
23                                    Attachment A).  
24

25                                    On June 24, 2014, the park sent a scoping letter to federally recognized American Indian  
26                                    tribes and tribal governments that are traditionally associated with the area now containing the  
27                                    park, informing them of the proposed project and soliciting comments (Attachment A). The  
28                                    tribes and tribal governments that received a scoping letter include the following:

- 29                                    • Absentee Shawnee Tribe  
30                                    • Caddo Nation  
31                                    • Cherokee Nation of Oklahoma  
32                                    • Jena Band of the Choctaw Indians  
33                                    • The Osage Nation  
34                                    • Shawnee Tribe of Oklahoma  
35                                    • Quapaw Tribe of Oklahoma  
36                                    • United Keetoowah Band of Cherokee Indians  
37                                    • The Chickasaw Nation  
38                                    • Muscogee (Creek) Nation of Oklahoma

Information from the tribes also was requested to determine if any ethnographic resources are in the project area and if the tribes wanted to be involved in the environmental compliance process.

## **Public**

The park initiated public scoping with a press release that was sent on June 24, 2014 to the *Arkansas Democrat Gazette*, *Barry County Advertiser*, *Cassville Democrat*, *McDonald County News*, *Morning News of Northwest Arkansas*, *Times of Northeast Benton County*, and *Weekly Advertiser*. A scoping announcement was also posted to the NPS Planning, Environment and Public Comment (PEPC) website on June 25, 2014. The scoping period was defined as June 25, 2014 through July 25, 2014. The press release and scoping announcement are in Attachment B.

## **Scoping Comments**

### **Agency and Tribal Comments**

A scoping notice response was received from the SHPO on July 24, 2014 stating that Alternative A appears to result in the least removal of the Tour Road, which is likely eligible for the National Register of Historic Places (NRHP) because of its association with Mission 66. In addition, Alternative A would result in the least amount of ground disturbance and would be less likely to impact archeological resources.

The ACHP responded to the scoping notice in a letter dated August 4, 2014 stating that they will not be participating in the current Section 106 consultation since they did not participate in the 2012 Programmatic Agreement (PA) (which was developed under the separate Highway 62 relocation project for the Federal Highway Administration and Arkansas Highway and Transportation Department), unless controversy should develop and the NPS or another party should contact them or request their involvement. The letter also recommended steps to take if the project results in impacts unanticipated in the 2012 PA.

The USFWS Arkansas Field Office responded to the scoping notice in an e-mail dated August 11, 2014, stating that the alternatives proposed appear to have minor adverse effects on fish and wildlife resources, with no effects anticipated to listed species.

Responses from the SHPO, ACHP, and USFWS are in Attachment C.

No responses from area tribes were received following the scoping notice.

### **Public Comments**

PEA RIDGE NATIONAL MILITARY PARK  
HIGHWAY 62 MITIGATIONS ENVIRONMENTAL ASSESSMENT  
PUBLIC SCOPING SUMMARY

1 No comments were received from the public during the scoping period.

2

3 ***References***

4

5 National Park Service (NPS). 2011. Director's Order #12: Conservation Planning,  
6 Environmental Impact Analysis, and Decision-Making. Approved: November 5.

7

8



PEA RIDGE NATIONAL MILITARY PARK  
HIGHWAY 62 MITIGATIONS ENVIRONMENTAL ASSESSMENT  
PUBLIC SCOPING SUMMARY

1  
2  
3  
4  
5  
6  
7  
8

**Attachment A – Agency and Tribal Scoping Letters**

SHPO

ACHP

USFWS

Tribes and Tribal Governments



United States Department of the Interior  
NATIONAL PARK SERVICE

Pea Ridge National Military Park  
15930 US Hwy. 62 East  
Garfield, AR 7232

IN REPLY REFER TO:  
H42 (PERI Mitigation EA)

June 24, 2014

Mr. Eric Gilliland  
Senior Archeologist and Section 106 Coordinator  
The Arkansas Historic Preservation Program  
1500 Tower Building, 323 Center Street  
Little Rock, AR. 72201

**Subject: Scoping Notice — Preparation of an Environmental Assessment for Highway 62 Mitigations at Pea Ridge National Military Park**

Dear Mr. Gilliland,

The National Park Service (NPS) is beginning an environmental assessment (EA) to evaluate a range of alternatives and associated impacts of providing new access and improved circulation to the park in conjunction with the relocation of Highway 62 in northwestern Arkansas. The existing highway alignment runs along the southern boundary of Pea Ridge National Military Park (park) and provides the only visitor access to the park. The project is needed because the Highway 62 relocation further south will leave the park without an access point to its key features. The purpose of the EA is to identify a safe and convenient access road (and parking) to key features in the park while minimizing impacts on cultural and natural resources.

Previous communications with your office are as follows. A letter was sent on February 27, 2013 to notify your office of the proposed project and mitigations and included background information and maps for the project. We received a response from your office on April 12, 2013 acknowledging the project and stating that the Programmatic Agreement developed by the Federal Highway Administration now governs Section 106 review on this undertaking. In addition, a site visit was held on June 11, 2014 to review and discuss potentially eligible Mission 66 resources within the project area.

In accordance with Advisory Council on Historic Preservation (ACHP) regulations, 36 CFR Part 800: Protection of Historic Properties, the NPS will comply with Section 106 of the National Historic Preservation Act of 1966, as amended. This letter serves to continue Section 106 consultations with your office. Section 106 consultation is also being initiated with identified Native American tribes and the ACHP. In addition, scoping has been initiated with other federal, state, and local agencies, and the public.

Four action alternatives for mitigation are being considered by the park and are described below. Elements common to all alternatives include a new parking area at the visitor center, extension of the new park road to the new horse trail parking and trailhead east of the visitor center, and a new restroom near the Elkhorn Tavern.

- **Alternative A** – This alternative would locate the new horse trailhead to just east of the visitor center, replace the one-way tour road with a two-lane (two-way) tour road between the visitor

center and the Elkhorn Tavern, and would provide a short new one-way route from the tour road on Elkhorn Mountain (below the east overlook) to the two-way portion of the tour road.

- **Alternative B** – In this alternative, the new horse trail area would be in the same area as in Alternative A, the two-lane (two-way) tour road between the visitor center and Elkhorn Tavern would be retained, and a longer new route would extend down the slope of Elkhorn Mountain (below the east overlook) to the new parking area near the Elkhorn Tavern.
- **Alternative C** – In this alternative, the new horse trail area would be located south of Ruddick's field, the park road would extend the full length of the southern boundary, the tour road between the visitor center and the Elkhorn Tavern would remain a one-way route, a new road would be added from the Elkhorn Tavern along historic Huntsville Road to the new park road on the southern boundary, and a longer new route would extend down the slope of Elkhorn Mountain (below the east overlook) to the new parking area near the Elkhorn Tavern.
- **Alternative D** - In this alternative, the new horse trail area would be in the same area as in Alternative C, the park road would extend to the parking area, a new vehicular route would extend to the north to connect with the existing tour road, and a new two-way (two-lane) route would extend from the new connecting point to the new parking area at the Elkhorn Tavern. The new tour road route along the slope of Elkhorn Mountain (below the east overlook) would extend to the new parking area on the south side of the tour road near the Elkhorn Tavern.

Previous cultural resource surveys of the project area indicate there are historic structures and other archeological resources near the proposed project area. The NPS will evaluate potential impacts on cultural resources concurrently with the preparation of the EA. The EA, including Section 106 compliance, will be sent to you for comment when available.

I invite your participation in the scoping for the proposed undertaking to provide review and consultation regarding the definition of the area of potential effect, and to ensure that any concerns your office has regarding potential impacts on historic properties are raised and addressed early in the planning process.

I will continue to keep you informed as the planning effort progresses, and we appreciate receiving any preliminary comments you have by July 25, 2014. If you have questions or need additional information, please don't hesitate to contact me. I can be reached in writing at Pea Ridge National Military Park, 15930, US Hwy 62, Garfield, AR 72732; by email at [kevin\\_eads@nps.gov](mailto:kevin_eads@nps.gov); or by phone at (479) 451-8122, ext. 239. I look forward to continued consultations with your office and believe these communications will help ensure that historic properties are adequately considered and protected throughout the planning and implementation of the project.

Sincerely,



Kevin Eads  
Superintendent (Acting)

Enclosure:

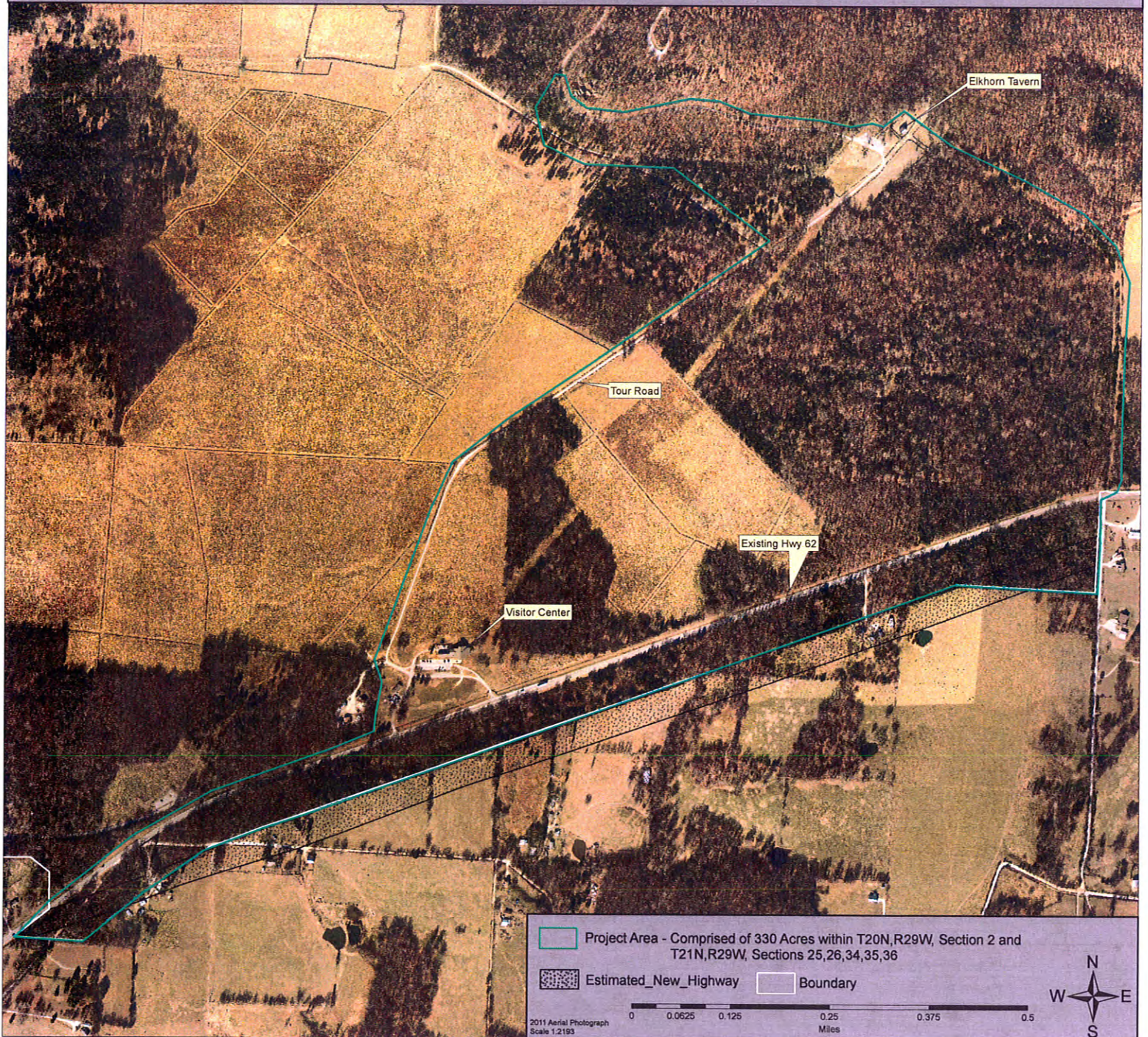
Maps illustrating the project area and preliminary alternatives

CC:

Mr. Ralph Wilcox, National Register & Survey Coordinator, The Arkansas Historic Preservation Program  
Mr. Lynn Malbrough, Environmental Division Head, AHTD  
Ms. Brenda Price, Assistant Division Head, AHTD  
Mr. Randal J. Looney, Federal Highway Administration – Arkansas Division Office

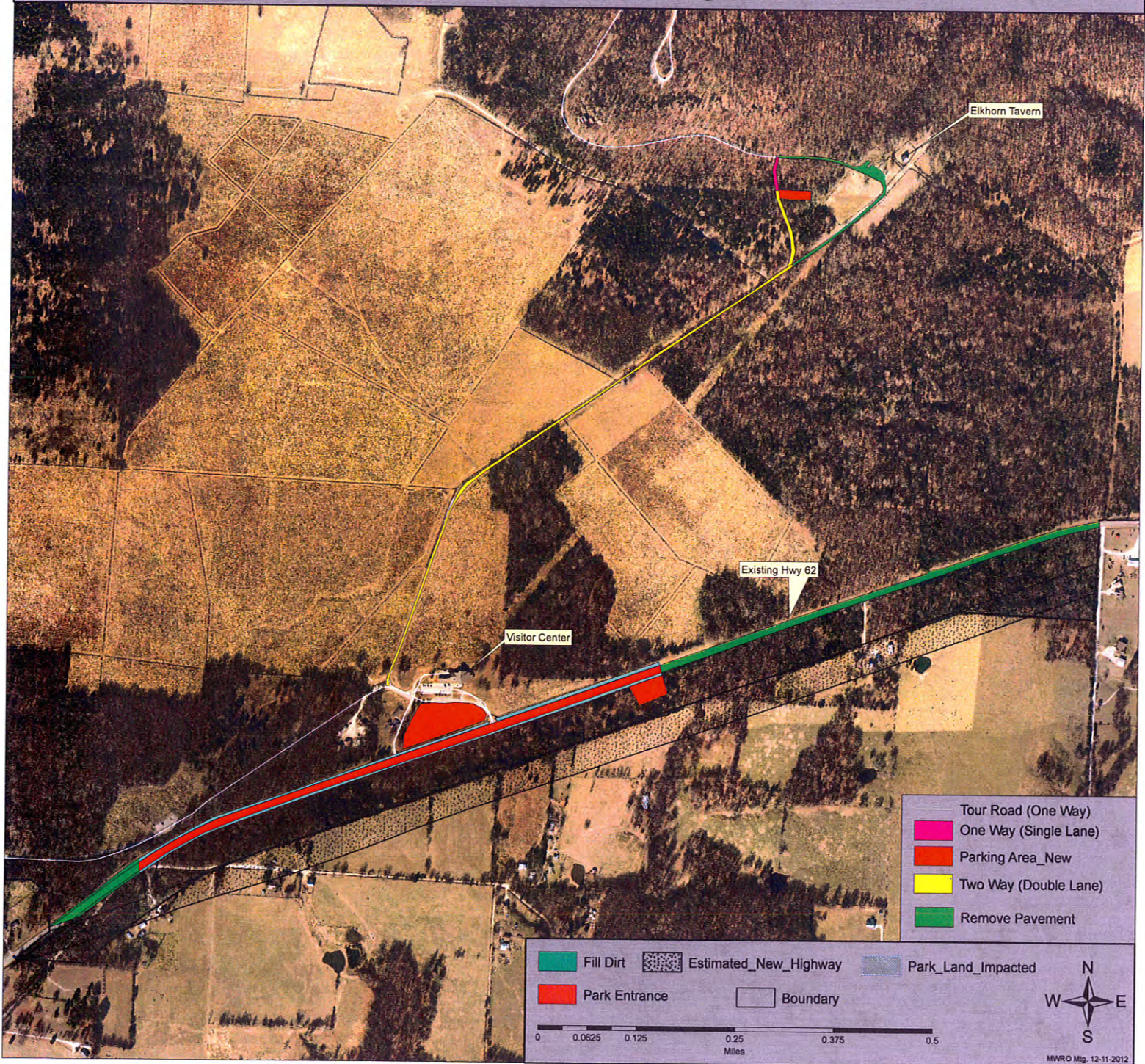


# Pea Ridge National Military Park Highway 62 Removal Mitigation EA Project Area Map



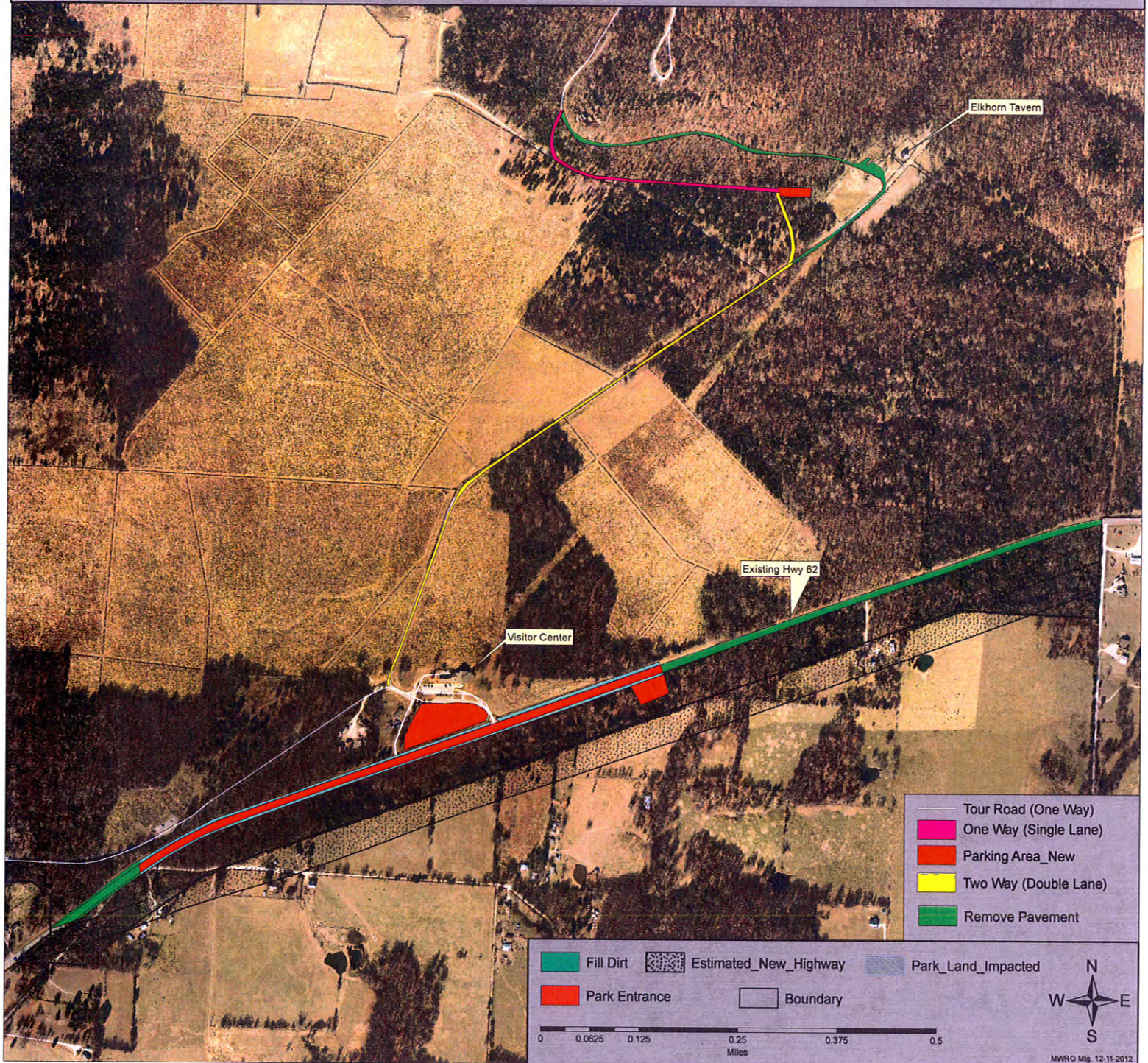


# Pea Ridge National Military Park Highway 62 Mitigation EA - Alternative A



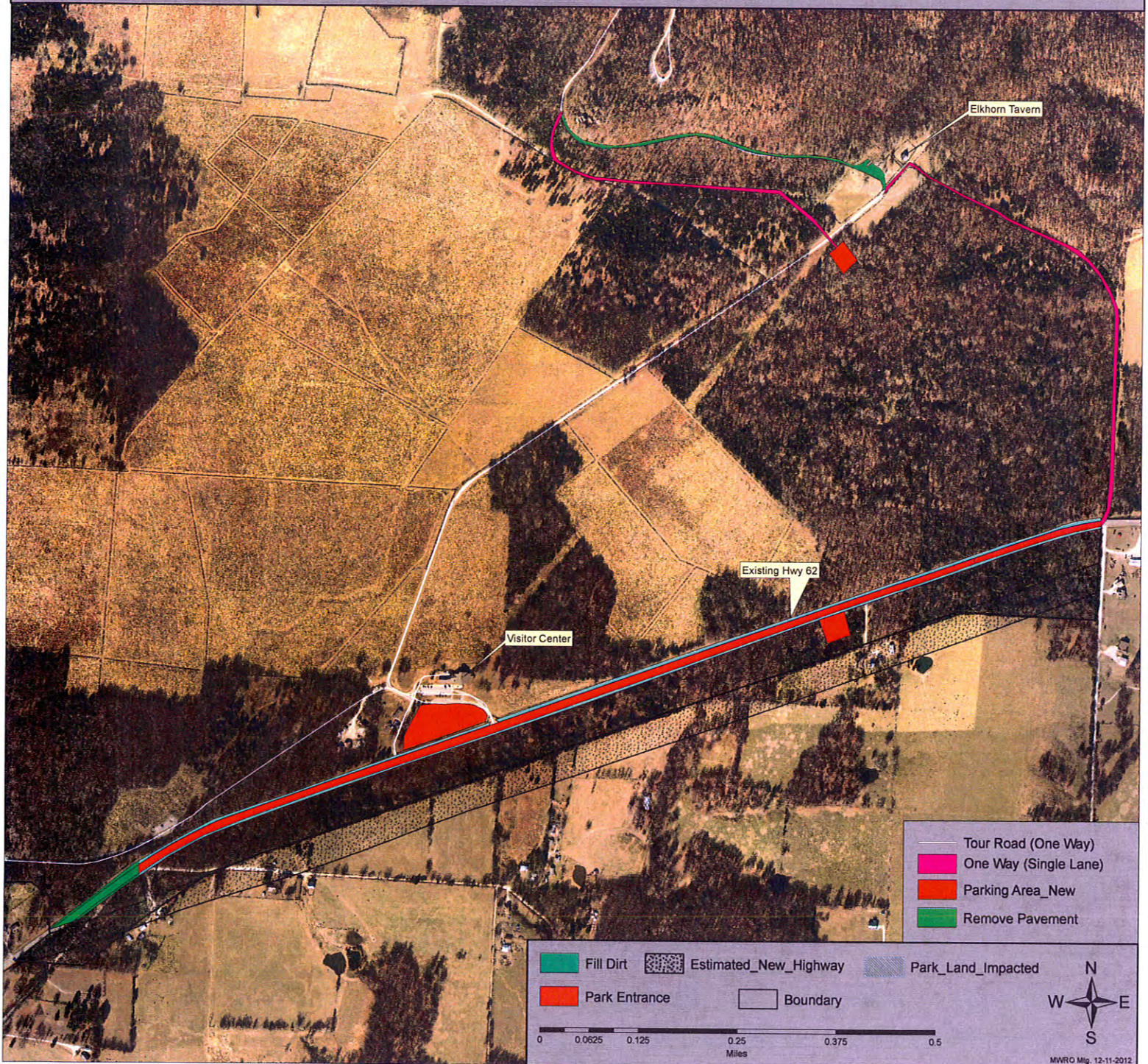


# Pea Ridge National Military Park Highway 62 Mitigation EA - Alternative B



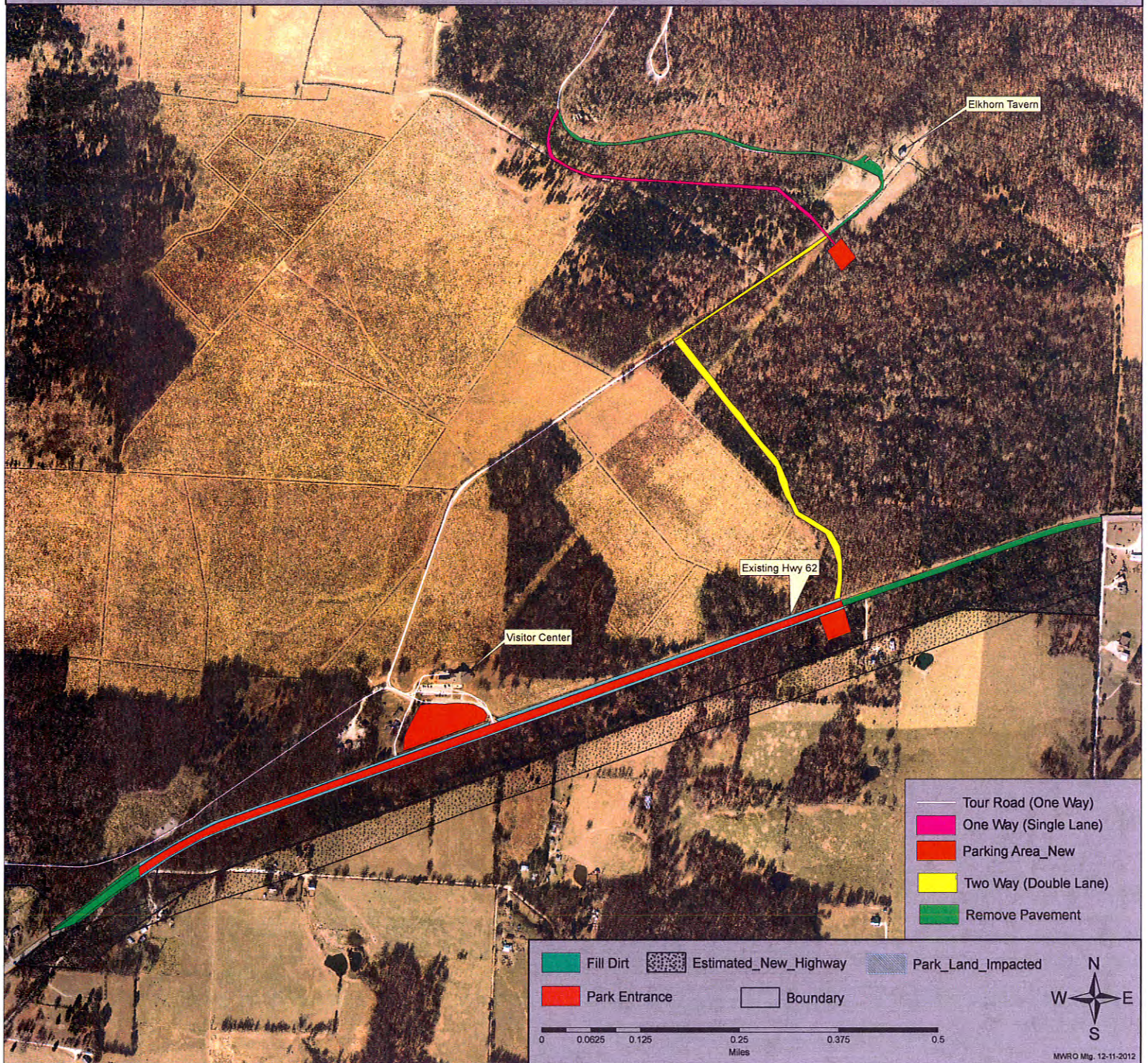


# Pea Ridge National Military Park Highway 62 Mitigation EA - Alternative C





# Pea Ridge National Military Park Highway 62 Mitigation EA - Alternative D





## APPENDICES



## **APPENDIX A. PUBLIC SCOPING SUMMARY**





## United States Department of the Interior

### NATIONAL PARK SERVICE

Pea Ridge National Military Park  
15930 US Hwy. 62 East  
Garfield, AR 7232

IN REPLY REFER TO:  
H42 (PERI Mitigation EA)

June 24, 2014

Mr. Reid Nelson  
Director, Office of Federal Agency Programs  
Advisory Council on Historic Preservation  
401 F Street NW, Suite 308  
Washington, DC 20001-2637

**Subject: Scoping Notice — Preparation of an Environmental Assessment for Highway 62 Mitigations at Pea Ridge National Military Park**

Dear Mr. Nelson,

The National Park Service (NPS) is beginning an environmental assessment (EA) to evaluate a range of alternatives and associated impacts of providing new access and improved circulation to the park in conjunction with the relocation of Highway 62 in northwestern Arkansas. The existing highway alignment runs along the southern boundary of Pea Ridge National Military Park (park) and provides the only visitor access to the park. The project is needed because the Highway 62 relocation further south will leave the park without an access point to its key features. The purpose of the EA is to identify a safe and convenient access road (and parking) to key features in the park while minimizing impacts on cultural and natural resources.

In accordance with Advisory Council on Historic Preservation (ACHP) regulations, 36 CFR Part 800: Protection of Historic Properties, the NPS will comply with Section 106 of the National Historic Preservation Act of 1966, as amended. This letter serves to initiate Section 106 consultation with your office. Section 106 consultation is also being initiated with identified Native American tribes and the Arkansas Historic Preservation Program (SHPO). In addition, scoping has been initiated with other federal, state, and local agencies, and the public.

Four action alternatives for mitigation are being considered by the park and are described below. Elements common to all alternatives include a new parking area at the visitor center, extension of the new park road to the new horse trail parking and trailhead east of the visitor center, and a new restroom near the Elkhorn Tavern.

- **Alternative A** – This alternative would locate the new horse trailhead to just east of the visitor center, replace the one-way tour road with a two-lane (two-way) tour road between the visitor center and the Elkhorn Tavern, and would provide a short new one-way route from the tour road on Elkhorn Mountain (below the east overlook) to the two-way portion of the tour road.
- **Alternative B** – In this alternative, the new horse trail area would be in the same area as in Alternative A, the two-lane (two-way) tour road between the visitor center and Elkhorn Tavern would be retained, and a longer new route would extend down the slope of Elkhorn Mountain (below the east overlook) to the new parking area near the Elkhorn Tavern.

- **Alternative C** – In this alternative, the new horse trail area would be located south of Ruddick's field, the park road would extend the full length of the southern boundary, the tour road between the visitor center and the Elkhorn Tavern would be a one-way route, a new road would be added from the Elkhorn Tavern along historic Huntsville Road to the new park road on the southern boundary, and a longer new route would extend down the slope of Elkhorn Mountain (below the east overlook) to the new parking area near the Elkhorn Tavern.
- **Alternative D** – In this alternative, the new horse trail area would be in the same area as in Alternative C, the park road would extend to the parking area, a new vehicular route would extend to the north to connect with the existing tour road, and a new two-way (two-lane) route would extend from the new connecting point to the new parking area at the Elkhorn Tavern. The new tour road route along the slope of Elkhorn Mountain (below the east overlook) would extend to the new parking area on the south side of the tour road near the Elkhorn Tavern.

Previous cultural resource surveys of the project area indicate there are historic structures and other archeological resources near the proposed project area. The NPS will evaluate potential impacts on cultural resources concurrently with the preparation of the EA. The EA, including Section 106 compliance, will be sent to you for comment when available.

I invite your participation in the scoping for the proposed undertaking to provide review and consultation regarding the definition of the area of potential effect, and to ensure that any concerns your office has regarding potential impacts on historic properties are raised and addressed early in the planning process.

I will continue to keep you informed as the planning effort progresses, and we appreciate receiving any preliminary comments you have by July 25, 2014. If you have questions or need additional information, please don't hesitate to contact me. I can be reached in writing at Pea Ridge National Military Park, 15930, US Hwy 62, Garfield, AR 72732; by email at kevin\_eads@nps.gov; or by phone at (479) 451-8122, ext. 239. I look forward to continued consultations with your office and believe these communications will help ensure that historic properties are adequately considered and protected throughout the planning and implementation of the project.

Sincerely,



Kevin Eads  
Superintendent (Acting)

Enclosure:

Maps illustrating the project area and preliminary alternatives

CC:

Mr. Eric Gilliland, Section 106 Coordinator, The Arkansas Historic Preservation Program.



# United States Department of the Interior

## NATIONAL PARK SERVICE

Pea Ridge National Military Park  
15930 US Hwy 62 East  
Garfield, AR. 72732

IN REPLY REFER TO

H42 (PERI Mitigation EA)

June 24, 2014

Mr. Mitch Wine  
Biologist  
Arkansas Field Office  
U.S. Fish and Wildlife Service  
110 S. Amity Road, Suite 300  
Conway, AR 72032

**Subject: Scoping Notice — Preparation of an Environmental Assessment for Highway 62 Mitigations at Pea Ridge National Military Park**

Dear Mr. Wine,

The National Park Service (NPS) is beginning an environmental assessment (EA) to evaluate a range of alternatives and associated impacts of providing new access and improved circulation to the park in conjunction with the relocation of Highway 62 in northwestern Arkansas. The existing highway alignment runs along the southern boundary of Pea Ridge National Military Park (park) and provides the only visitor access to the park. The project is needed because the Highway 62 relocation further south will leave the park without an access point to its key features. The purpose of the EA is to identify a safe and convenient access road (and parking) to key features in the park while minimizing impacts on cultural and natural resources.

A letter was sent on March 12, 2013 to notify your office of the proposed project and mitigations and included background information on the project. We received your letter of response on March 12, 2013 and acknowledge that no further notifications are necessary. As a courtesy, we are notifying you that we are initiating agency scoping. An EA will be prepared in compliance with the National Environmental Policy Act (NEPA) and will also be used to coordinate compliance with the requirements of Section 106 of the National Historic Preservation Act pursuant to 36 Code of Federal Regulations Part 800.8(c).

Four action alternatives for mitigation are being considered by the park and are described below. Elements common to all alternatives include a new parking area at the visitor center, extension of the new park road to the new horse trail parking and trailhead east of the visitor center, and a new restroom near the Elkhorn Tavern.

- **Alternative A** – This alternative would locate the new horse trailhead to just east of the visitor center, replace the one-way tour road with a two-lane (two-way) tour road between the visitor center and the Elkhorn Tavern, and would provide a short new one-way route from the tour road on Elkhorn Mountain (below the east overlook) to the two-way portion of the tour road.
- **Alternative B** – In this alternative, the new horse trail area would be in the same area as in Alternative A, the two-lane (two-way) tour road between the visitor center and Elkhorn Tavern



would be retained, and a longer new route would extend down the slope of Elkhorn Mountain (below the east overlook) to the new parking area near the Elkhorn Tavern.

- **Alternative C** – In this alternative, the new horse trail area would be located south of Ruddick's field, the park road would extend the full length of the southern boundary, the tour road between the visitor center and the Elkhorn Tavern would remain a one-way route, a new road would be added from the Elkhorn Tavern along historic Huntsville Road to the new park road on the southern boundary, and a longer new route would extend down the slope of Elkhorn Mountain (below the east overlook) to the new parking area near the Elkhorn Tavern.
- **Alternative D** - In this alternative, the new horse trail area would be in the same area as in Alternative C, the park road would extend to the parking area, a new vehicular route would extend to the north to connect with the existing tour road, and a new two-way (two-lane) route would extend from the new connecting point to the new parking area at the Elkhorn Tavern. The new tour road route along the slope of Elkhorn Mountain (below the east overlook) would extend to the new parking area on the south side of the tour road near the Elkhorn Tavern.

Section 7 of the Endangered Species Act of 1973, as amended, requires that a federal agency consult with the U.S. Fish and Wildlife Service or the National Marine Fisheries Service on any action that may affect threatened, endangered, or proposed species; or that may result in adverse modification of designated or proposed critical habitat. This letter will serve as a record that the NPS is initiating informal consultation with your agency pursuant to the requirements of the Endangered Species Act and NPS *Management Policies 2006*.

I invite your participation in the scoping for the proposed undertaking to provide review and consultation regarding federally listed species and to ensure that any concerns your office has regarding potential impacts are raised and addressed early in the planning process.

I will continue to keep you informed as the planning effort progresses, and we appreciate receiving any preliminary comments you have by July 25, 2014. If you have questions or need additional information, please don't hesitate to contact me. I can be reached, in writing at Pea Ridge National Military Park, 15930 U.S. Hwy 62 Garfield AR. 72732; by email at [kevin\\_eads@nps.gov](mailto:kevin_eads@nps.gov); or by phone at (479) 451-8122, ext. 239. I look forward to continued consultations with your office on this project.

Sincerely,



Kevin Eads  
Superintendent (Acting)

Enclosure:

Maps illustrating the project area and preliminary alternatives maps





## United States Department of the Interior NATIONAL PARK SERVICE

Pea Ridge National Military Park  
15930 US Hwy. 62 East  
Garfield, AR 7232

IN REPLY REFER TO:  
H42 (PERI Mitigation EA)

June 24, 2014

Ms. Edwina Butler-Wolfe, Governor  
Absentee Shawnee Tribe  
2025 S. Gordon Cooper  
Shawnee, OK 74801

### **Subject: Scoping Notice — Preparation of an Environmental Assessment for Highway 62 Mitigations at Pea Ridge National Military Park**

Dear Governor Butler-Wolfe:

The National Park Service (NPS) is beginning an environmental assessment (EA) to evaluate a range of alternatives and associated impacts of providing new access and improved circulation to the park in conjunction with the relocation of Highway 62 in northwestern Arkansas. The existing highway alignment runs along the southern boundary of Pea Ridge National Military Park (park) and provides the only visitor access to the park. The project is needed because the Highway 62 relocation further south will leave the park without an access point to its key features. The purpose of the EA is to identify a safe and convenient access road (and parking) to key features in the park while minimizing impacts on cultural and natural resources.

A letter was sent on March 01, 2013 to notify your tribe of the proposed project and mitigations and included background information on the project. In accordance with Advisory Council on Historic Preservation (ACHP) regulations, 36 CFR Part 800: Protection of Historic Properties, the NPS will comply with Section 106 of the National Historic Preservation Act of 1966, as amended. This letter serves to initiate agency scoping for the project and to continue Section 106 consultation with your tribe. Section 106 consultation is also being initiated with the Arkansas Historic Preservation Program (SHPO) and the ACHP. In addition, scoping has been initiated with other federal, state, and local agencies and the public.

Four action alternatives for mitigation are being considered by the park and are described below. Elements common to all alternatives include a new parking area at the visitor center, extension of the new park road to the new horse trail parking and trailhead east of the visitor center, and a new restroom near the Elkhorn Tavern.

- **Alternative A** – This alternative would locate the new horse trailhead to just east of the visitor center, replace the one-way tour road with a two-lane (two-way) tour road between the visitor center and the Elkhorn Tavern, and would provide a short new one-way route from the tour road on Elkhorn Mountain (below the east overlook) to the two-way portion of the tour road.
- **Alternative B** – In this alternative, the new horse trail area would be in the same area as in Alternative A, the two-lane (two-way) tour road between the visitor center and Elkhorn Tavern would be retained, and a longer new route would extend down the slope of Elkhorn Mountain (below the east overlook) to the new parking area near the Elkhorn Tavern.

- **Alternative C** – In this alternative, the new horse trail area would be located south of Ruddick's field, the park road would extend the full length of the southern boundary, the tour road between the visitor center and the Elkhorn Tavern would remain a one-way route, a new road would be added from the Elkhorn Tavern along historic Huntsville Road to the new park road on the southern boundary, and a longer new route would extend down the slope of Elkhorn Mountain (below the east overlook) to the new parking area near the Elkhorn Tavern.
- **Alternative D** - In this alternative, the new horse trail area would be in the same area as in Alternative C, the park road would extend to the parking area, a new vehicular route would extend to the north to connect with the existing tour road, and a new two-way (two-lane) route would extend from the new connecting point to the new parking area at the Elkhorn Tavern. The new tour road route along the slope of Elkhorn Mountain (below the east overlook) would extend to the new parking area on the south side of the tour road near the Elkhorn Tavern.

Previous cultural resource surveys of the project area indicate historic structures and other archeological resources are near the proposed project area. The NPS will evaluate potential impacts on cultural resources concurrently with the preparation of the EA. A programmatic agreement has also been prepared to address mitigation for potential cultural resource impacts. The EA, including Section 106 compliance, will be sent to you for comment when available.

In accordance with the National Environmental Policy Act (NEPA) and 36 CFR 800 requirements, we are eliciting your comments and invite you to review the proposed project. We appreciate any input you have regarding traditional use, ethnographic resources, and/or traditional cultural properties within or near the proposed study area.

I will continue to keep you informed as the planning effort progresses, and we appreciate receiving any preliminary comments you have by July 25, 2014. If you have questions or need additional information, please don't hesitate to contact me. I can be reached in writing at Pea Ridge National Military Park, 15930, US Hwy 62, Garfield, AR 72732; by email at [kevin\\_eads@nps.gov](mailto:kevin_eads@nps.gov); or by phone at (479) 451-8122, ext. 239. I look forward to continued consultations with your tribe and believe these communications will help ensure that historic properties are adequately considered and protected throughout the planning and implementation of the project.

Sincerely,



Kevin Eads  
Superintendent (Acting)

Enclosure:

Maps illustrating the project area and preliminary alternatives

CC:

Mr. Joseph H. Blanchard, Tribal Historic Preservation Officer, Absentee Shawnee Tribe  
Mr. Lynn Malbrough, Environmental Division Head, AHTD



United States Department of the Interior  
NATIONAL PARK SERVICE

Pea Ridge National Military Park  
15930 US Hwy. 62 East  
Garfield, AR 7232

IN REPLY REFER TO:  
H42 (PERI Mitigation EA)

June 24, 2014

Mr. George Wickliffe, Chief  
United Keetoowah Band of Cherokee Indians  
P.O. Box 746  
Tahlequah, OK 74465

**Subject: Scoping Notice — Preparation of an Environmental Assessment for Highway 62 Mitigations at Pea Ridge National Military Park**

Dear Chief Wickliffe:

The National Park Service (NPS) is beginning an environmental assessment (EA) to evaluate a range of alternatives and associated impacts of providing new access and improved circulation to the park in conjunction with the relocation of Highway 62 in northwestern Arkansas. The existing highway alignment runs along the southern boundary of Pea Ridge National Military Park (park) and provides the only visitor access to the park. The project is needed because the Highway 62 relocation further south will leave the park without an access point to its key features. The purpose of the EA is to identify a safe and convenient access road (and parking) to key features in the park while minimizing impacts on cultural and natural resources.

A letter was sent on March 01, 2013 to notify your tribe of the proposed project and mitigations and included background information on the project. In accordance with Advisory Council on Historic Preservation (ACHP) regulations, 36 CFR Part 800: Protection of Historic Properties, the NPS will comply with Section 106 of the National Historic Preservation Act of 1966, as amended. This letter serves to initiate agency scoping for the project and to continue Section 106 consultation with your tribe. Section 106 consultation is also being initiated with the Arkansas Historic Preservation Program (SHPO) and the ACHP. In addition, scoping has been initiated with other federal, state, and local agencies and the public.

Four action alternatives for mitigation are being considered by the park and are described below. Elements common to all alternatives include a new parking area at the visitor center, extension of the new park road to the new horse trail parking and trailhead east of the visitor center, and a new restroom near the Elkhorn Tavern.

- **Alternative A** – This alternative would locate the new horse trailhead to just east of the visitor center, replace the one-way tour road with a two-lane (two-way) tour road between the visitor center and the Elkhorn Tavern, and would provide a short new one-way route from the tour road on Elkhorn Mountain (below the east overlook) to the two-way portion of the tour road.
- **Alternative B** – In this alternative, the new horse trail area would be in the same area as in Alternative A, the two-lane (two-way) tour road between the visitor center and Elkhorn Tavern would be retained, and a longer new route would extend down the slope of Elkhorn Mountain (below the east overlook) to the new parking area near the Elkhorn Tavern.



- **Alternative C** – In this alternative, the new horse trail area would be located south of Ruddick's field, the park road would extend the full length of the southern boundary, the tour road between the visitor center and the Elkhorn Tavern would remain a one-way route, a new road would be added from the Elkhorn Tavern along historic Huntsville Road to the new park road on the southern boundary, and a longer new route would extend down the slope of Elkhorn Mountain (below the east overlook) to the new parking area near the Elkhorn Tavern.
- **Alternative D** - In this alternative, the new horse trail area would be in the same area as in Alternative C, the park road would extend to the parking area, a new vehicular route would extend to the north to connect with the existing tour road, and a new two-way (two-lane) route would extend from the new connecting point to the new parking area at the Elkhorn Tavern. The new tour road route along the slope of Elkhorn Mountain (below the east overlook) would extend to the new parking area on the south side of the tour road near the Elkhorn Tavern.

Previous cultural resource surveys of the project area indicate historic structures and other archeological resources are near the proposed project area. The NPS will evaluate potential impacts on cultural resources concurrently with the preparation of the EA. A programmatic agreement has also been prepared to address mitigation for potential cultural resource impacts. The EA, including Section 106 compliance, will be sent to you for comment when available.

In accordance with the National Environmental Policy Act (NEPA) and 36 CFR 800 requirements, we are eliciting your comments and invite you to review the proposed project. We appreciate any input you have regarding traditional use, ethnographic resources, and/or traditional cultural properties within or near the proposed study area.

I will continue to keep you informed as the planning effort progresses, and we appreciate receiving any preliminary comments you have by July 25, 2014. If you have questions or need additional information, please don't hesitate to contact me. I can be reached in writing at Pea Ridge National Military Park, 15930, US Hwy 62, Garfield, AR 72732; by email at kevin\_eads@nps.gov; or by phone at (479) 451-8122, ext. 239. I look forward to continued consultations with your tribe and believe these communications will help ensure that historic properties are adequately considered and protected throughout the planning and implementation of the project.

Sincerely,



Kevin Eads  
Superintendent (Acting)

Enclosure:

Maps illustrating the project area and preliminary alternatives

CC:

Ms. Lisa Larue-Baker, Tribal Historic Preservation Officer, United Keetoowah Band of Cherokee Indians  
Mr. Lynn Malbrough, Environmental Division Head, AHTD



## United States Department of the Interior NATIONAL PARK SERVICE

Pea Ridge National Military Park  
15930 US Hwy. 62 East  
Garfield, AR 7232

IN REPLY REFER TO:  
H42 (PERI Mitigation EA)

June 24, 2014

Mr. John Berrey, Tribal Chairperson  
Quapaw Tribe of Oklahoma  
P.O. Box 765  
Quapaw, OK 74363

**Subject: Scoping Notice — Preparation of an Environmental Assessment for Highway 62 Mitigations at Pea Ridge National Military Park**

Dear Tribal Chairperson Berrey:

The National Park Service (NPS) is beginning an environmental assessment (EA) to evaluate a range of alternatives and associated impacts of providing new access and improved circulation to the park in conjunction with the relocation of Highway 62 in northwestern Arkansas. The existing highway alignment runs along the southern boundary of Pea Ridge National Military Park (park) and provides the only visitor access to the park. The project is needed because the Highway 62 relocation further south will leave the park without an access point to its key features. The purpose of the EA is to identify a safe and convenient access road (and parking) to key features in the park while minimizing impacts on cultural and natural resources.

A letter was sent on March 01, 2013 to notify your tribe of the proposed project and mitigations and included background information on the project. In accordance with Advisory Council on Historic Preservation (ACHP) regulations, 36 CFR Part 800: Protection of Historic Properties, the NPS will comply with Section 106 of the National Historic Preservation Act of 1966, as amended. This letter serves to initiate agency scoping for the project and to continue Section 106 consultation with your tribe. Section 106 consultation is also being initiated with the Arkansas Historic Preservation Program (SHPO) and the ACHP. In addition, scoping has been initiated with other federal, state, and local agencies and the public.

Four action alternatives for mitigation are being considered by the park and are described below. Elements common to all alternatives include a new parking area at the visitor center, extension of the new park road to the new horse trail parking and trailhead east of the visitor center, and a new restroom near the Elkhorn Tavern.

- **Alternative A** – This alternative would locate the new horse trailhead to just east of the visitor center, replace the one-way tour road with a two-lane (two-way) tour road between the visitor center and the Elkhorn Tavern, and would provide a short new one-way route from the tour road on Elkhorn Mountain (below the east overlook) to the two-way portion of the tour road.
- **Alternative B** – In this alternative, the new horse trail area would be in the same area as in Alternative A, the two-lane (two-way) tour road between the visitor center and Elkhorn Tavern would be retained, and a longer new route would extend down the slope of Elkhorn Mountain (below the east overlook) to the new parking area near the Elkhorn Tavern.



- **Alternative C** – In this alternative, the new horse trail area would be located south of Ruddick's field, the park road would extend the full length of the southern boundary, the tour road between the visitor center and the Elkhorn Tavern would remain a one-way route, a new road would be added from the Elkhorn Tavern along historic Huntsville Road to the new park road on the southern boundary, and a longer new route would extend down the slope of Elkhorn Mountain (below the east overlook) to the new parking area near the Elkhorn Tavern.
- **Alternative D** - In this alternative, the new horse trail area would be in the same area as in Alternative C, the park road would extend to the parking area, a new vehicular route would extend to the north to connect with the existing tour road, and a new two-way (two-lane) route would extend from the new connecting point to the new parking area at the Elkhorn Tavern. The new tour road route along the slope of Elkhorn Mountain (below the east overlook) would extend to the new parking area on the south side of the tour road near the Elkhorn Tavern.

Previous cultural resource surveys of the project area indicate historic structures and other archeological resources are near the proposed project area. The NPS will evaluate potential impacts on cultural resources concurrently with the preparation of the EA. A programmatic agreement has also been prepared to address mitigation for potential cultural resource impacts. The EA, including Section 106 compliance, will be sent to you for comment when available.

In accordance with the National Environmental Policy Act (NEPA) and 36 CFR 800 requirements, we are eliciting your comments and invite you to review the proposed project. We appreciate any input you have regarding traditional use, ethnographic resources, and/or traditional cultural properties within or near the proposed study area.

I will continue to keep you informed as the planning effort progresses, and we appreciate receiving any preliminary comments you have by July 25, 2014. If you have questions or need additional information, please don't hesitate to contact me. I can be reached in writing at Pea Ridge National Military Park, 15930, US Hwy 62, Garfield, AR 72732; by email at [kevin\\_eads@nps.gov](mailto:kevin_eads@nps.gov); or by phone at (479) 451-8122, ext. 239. I look forward to continued consultations with your tribe and believe these communications will help ensure that historic properties are adequately considered and protected throughout the planning and implementation of the project.

Sincerely,



Kevin Eads  
Superintendent (Acting)

Enclosure:

Maps illustrating the project area and preliminary alternatives

CC:

Mr. Everett Bandy, Tribal Historic Preservation Officer, Quapaw Tribe of Oklahoma  
Mr. Lynn Malbrough, Environmental Division Head, AHTD



## United States Department of the Interior NATIONAL PARK SERVICE

Pea Ridge National Military Park  
15930 US Hwy. 62 East  
Garfield, AR 7232

IN REPLY REFER TO:  
H42 (PERI Mitigation EA)

June 24, 2014

Mr. John D. Red Eagle, Principal Chief  
The Osage Nation  
P.O. Box 779  
Pawhuska, OK 74056

### **Subject: Scoping Notice — Preparation of an Environmental Assessment for Highway 62 Mitigations at Pea Ridge National Military Park**

Dear Principal Chief Red Eagle:

The National Park Service (NPS) is beginning an environmental assessment (EA) to evaluate a range of alternatives and associated impacts of providing new access and improved circulation to the park in conjunction with the relocation of Highway 62 in northwestern Arkansas. The existing highway alignment runs along the southern boundary of Pea Ridge National Military Park (park) and provides the only visitor access to the park. The project is needed because the Highway 62 relocation further south will leave the park without an access point to its key features. The purpose of the EA is to identify a safe and convenient access road (and parking) to key features in the park while minimizing impacts on cultural and natural resources.

A letter was sent on March 01, 2013 to notify your tribe of the proposed project and mitigations and included background information on the project. In accordance with Advisory Council on Historic Preservation (ACHP) regulations, 36 CFR Part 800: Protection of Historic Properties, the NPS will comply with Section 106 of the National Historic Preservation Act of 1966, as amended. This letter serves to initiate agency scoping for the project and to continue Section 106 consultation with your tribe. Section 106 consultation is also being initiated with the Arkansas Historic Preservation Program (SHPO) and the ACHP. In addition, scoping has been initiated with other federal, state, and local agencies and the public.

Four action alternatives for mitigation are being considered by the park and are described below. Elements common to all alternatives include a new parking area at the visitor center, extension of the new park road to the new horse trail parking and trailhead east of the visitor center, and a new restroom near the Elkhorn Tavern.

- **Alternative A** – This alternative would locate the new horse trailhead to just east of the visitor center, replace the one-way tour road with a two-lane (two-way) tour road between the visitor center and the Elkhorn Tavern, and would provide a short new one-way route from the tour road on Elkhorn Mountain (below the east overlook) to the two-way portion of the tour road.
- **Alternative B** – In this alternative, the new horse trail area would be in the same area as in Alternative A, the two-lane (two-way) tour road between the visitor center and Elkhorn Tavern would be retained, and a longer new route would extend down the slope of Elkhorn Mountain (below the east overlook) to the new parking area near the Elkhorn Tavern.



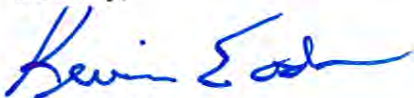
- **Alternative C** – In this alternative, the new horse trail area would be located south of Ruddick's field, the park road would extend the full length of the southern boundary, the tour road between the visitor center and the Elkhorn Tavern would remain a one-way route, a new road would be added from the Elkhorn Tavern along historic Huntsville Road to the new park road on the southern boundary, and a longer new route would extend down the slope of Elkhorn Mountain (below the east overlook) to the new parking area near the Elkhorn Tavern.
- **Alternative D** - In this alternative, the new horse trail area would be in the same area as in Alternative C, the park road would extend to the parking area, a new vehicular route would extend to the north to connect with the existing tour road, and a new two-way (two-lane) route would extend from the new connecting point to the new parking area at the Elkhorn Tavern. The new tour road route along the slope of Elkhorn Mountain (below the east overlook) would extend to the new parking area on the south side of the tour road near the Elkhorn Tavern.

Previous cultural resource surveys of the project area indicate historic structures and other archeological resources are near the proposed project area. The NPS will evaluate potential impacts on cultural resources concurrently with the preparation of the EA. A programmatic agreement has also been prepared to address mitigation for potential cultural resource impacts. The EA, including Section 106 compliance, will be sent to you for comment when available.

In accordance with the National Environmental Policy Act (NEPA) and 36 CFR 800 requirements, we are eliciting your comments and invite you to review the proposed project. We appreciate any input you have regarding traditional use, ethnographic resources, and/or traditional cultural properties within or near the proposed study area.

I will continue to keep you informed as the planning effort progresses, and we appreciate receiving any preliminary comments you have by July 25, 2014. If you have questions or need additional information, please don't hesitate to contact me. I can be reached in writing at Pea Ridge National Military Park, 15930, US Hwy 62, Garfield, AR 72732; by email at [kevin\\_eads@nps.gov](mailto:kevin_eads@nps.gov); or by phone at (479) 451-8122, ext. 239. I look forward to continued consultations with your tribe and believe these communications will help ensure that historic properties are adequately considered and protected throughout the planning and implementation of the project.

Sincerely,



Kevin Eads  
Superintendent (Acting)

Enclosure:

Maps illustrating the project area and preliminary alternatives

CC:

Dr. Barker Fariss, Senior Archaeologist, The Osage Nation  
Mr. Lynn Malbrough, Environmental Division Head, AHTD





United States Department of the Interior  
NATIONAL PARK SERVICE

Pea Ridge National Military Park  
15930 US Hwy. 62 East  
Garfield, AR 7232

IN REPLY REFER TO:  
H42 (PERI Mitigation EA)

June 24, 2014

Mr. Bill Anoatubby, Governor  
The Chickasaw Nation  
2020 Arlington, Suite 4  
P.O. Box 1548  
Ada, OK 74821-1548

**Subject: Scoping Notice — Preparation of an Environmental Assessment for Highway 62 Mitigations at Pea Ridge National Military Park**

Dear Governor Anoatubby:

The National Park Service (NPS) is beginning an environmental assessment (EA) to evaluate a range of alternatives and associated impacts of providing new access and improved circulation to the park in conjunction with the relocation of Highway 62 in northwestern Arkansas. The existing highway alignment runs along the southern boundary of Pea Ridge National Military Park (park) and provides the only visitor access to the park. The project is needed because the Highway 62 relocation further south will leave the park without an access point to its key features. The purpose of the EA is to identify a safe and convenient access road (and parking) to key features in the park while minimizing impacts on cultural and natural resources.

A letter was sent on March 01, 2013 to notify your tribe of the proposed project and mitigations and included background information on the project. In accordance with Advisory Council on Historic Preservation (ACHP) regulations, 36 CFR Part 800: Protection of Historic Properties, the NPS will comply with Section 106 of the National Historic Preservation Act of 1966, as amended. This letter serves to initiate agency scoping for the project and to continue Section 106 consultation with your tribe. Section 106 consultation is also being initiated with the Arkansas Historic Preservation Program (SHPO) and the ACHP. In addition, scoping has been initiated with other federal, state, and local agencies and the public.

Four action alternatives for mitigation are being considered by the park and are described below. Elements common to all alternatives include a new parking area at the visitor center, extension of the new park road to the new horse trail parking and trailhead east of the visitor center, and a new restroom near the Elkhorn Tavern.

- **Alternative A** – This alternative would locate the new horse trailhead to just east of the visitor center, replace the one-way tour road with a two-lane (two-way) tour road between the visitor center and the Elkhorn Tavern, and would provide a short new one-way route from the tour road on Elkhorn Mountain (below the east overlook) to the two-way portion of the tour road.
- **Alternative B** – In this alternative, the new horse trail area would be in the same area as in Alternative A, the two-lane (two-way) tour road between the visitor center and Elkhorn Tavern

would be retained, and a longer new route would extend down the slope of Elkhorn Mountain (below the east overlook) to the new parking area near the Elkhorn Tavern.

- **Alternative C** – In this alternative, the new horse trail area would be located south of Ruddick's field, the park road would extend the full length of the southern boundary, the tour road between the visitor center and the Elkhorn Tavern would remain a one-way route, a new road would be added from the Elkhorn Tavern along historic Huntsville Road to the new park road on the southern boundary, and a longer new route would extend down the slope of Elkhorn Mountain (below the east overlook) to the new parking area near the Elkhorn Tavern.
- **Alternative D** - In this alternative, the new horse trail area would be in the same area as in Alternative C, the park road would extend to the parking area, a new vehicular route would extend to the north to connect with the existing tour road, and a new two-way (two-lane) route would extend from the new connecting point to the new parking area at the Elkhorn Tavern. The new tour road route along the slope of Elkhorn Mountain (below the east overlook) would extend to the new parking area on the south side of the tour road near the Elkhorn Tavern.

Previous cultural resource surveys of the project area indicate historic structures and other archeological resources are near the proposed project area. The NPS will evaluate potential impacts on cultural resources concurrently with the preparation of the EA. A programmatic agreement has also been prepared to address mitigation for potential cultural resource impacts. The EA, including Section 106 compliance, will be sent to you for comment when available.

In accordance with the National Environmental Policy Act (NEPA) and 36 CFR 800 requirements, we are eliciting your comments and invite you to review the proposed project. We appreciate any input you have regarding traditional use, ethnographic resources, and/or traditional cultural properties within or near the proposed study area.

I will continue to keep you informed as the planning effort progresses, and we appreciate receiving any preliminary comments you have by July 25, 2014. If you have questions or need additional information, please don't hesitate to contact me. I can be reached in writing at Pea Ridge National Military Park, 15930, US Hwy 62, Garfield, AR 72732; by email at [kevin\\_eads@nps.gov](mailto:kevin_eads@nps.gov); or by phone at (479) 451-8122, ext. 239. I look forward to continued consultations with your tribe and believe these communications will help ensure that historic properties are adequately considered and protected throughout the planning and implementation of the project.

Sincerely,



Kevin Eads  
Superintendent (Acting)

Enclosure:

Maps illustrating the project area and preliminary alternatives

CC:

Ms. Ladonna Brown, Historic Preservation Officer, The Chickasaw Nation  
Mr. Lynn Malbrough, Environmental Division Head, AHTD



United States Department of the Interior  
NATIONAL PARK SERVICE

Pea Ridge National Military Park  
15930 US Hwy. 62 East  
Garfield, AR 7232

IN REPLY REFER TO:  
H42 (PERI Mitigation EA)

June 24, 2014

Mr. Ron Sparkman, Chairman  
Shawnee Tribe of Oklahoma  
P.O. Box 189  
Miami, OK 74355

**Subject: Scoping Notice — Preparation of an Environmental Assessment for Highway 62 Mitigations at Pea Ridge National Military Park**

Dear Chairman Sparkman:

The National Park Service (NPS) is beginning an environmental assessment (EA) to evaluate a range of alternatives and associated impacts of providing new access and improved circulation to the park in conjunction with the relocation of Highway 62 in northwestern Arkansas. The existing highway alignment runs along the southern boundary of Pea Ridge National Military Park (park) and provides the only visitor access to the park. The project is needed because the Highway 62 relocation further south will leave the park without an access point to its key features. The purpose of the EA is to identify a safe and convenient access road (and parking) to key features in the park while minimizing impacts on cultural and natural resources.

A letter was sent on March 01, 2013 to notify your tribe of the proposed project and mitigations and included background information on the project. In accordance with Advisory Council on Historic Preservation (ACHP) regulations, 36 CFR Part 800: Protection of Historic Properties, the NPS will comply with Section 106 of the National Historic Preservation Act of 1966, as amended. This letter serves to initiate agency scoping for the project and to continue Section 106 consultation with your tribe. Section 106 consultation is also being initiated with the Arkansas Historic Preservation Program (SHPO) and the ACHP. In addition, scoping has been initiated with other federal, state, and local agencies and the public.

Four action alternatives for mitigation are being considered by the park and are described below. Elements common to all alternatives include a new parking area at the visitor center, extension of the new park road to the new horse trail parking and trailhead east of the visitor center, and a new restroom near the Elkhorn Tavern.

- **Alternative A** – This alternative would locate the new horse trailhead to just east of the visitor center, replace the one-way tour road with a two-lane (two-way) tour road between the visitor center and the Elkhorn Tavern, and would provide a short new one-way route from the tour road on Elkhorn Mountain (below the east overlook) to the two-way portion of the tour road.
- **Alternative B** – In this alternative, the new horse trail area would be in the same area as in Alternative A, the two-lane (two-way) tour road between the visitor center and Elkhorn Tavern would be retained, and a longer new route would extend down the slope of Elkhorn Mountain (below the east overlook) to the new parking area near the Elkhorn Tavern.



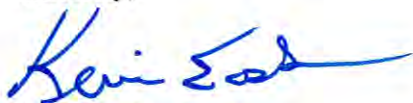
- **Alternative C** – In this alternative, the new horse trail area would be located south of Ruddick's field, the park road would extend the full length of the southern boundary, the tour road between the visitor center and the Elkhorn Tavern would remain a one-way route, a new road would be added from the Elkhorn Tavern along historic Huntsville Road to the new park road on the southern boundary, and a longer new route would extend down the slope of Elkhorn Mountain (below the east overlook) to the new parking area near the Elkhorn Tavern.
- **Alternative D** - In this alternative, the new horse trail area would be in the same area as in Alternative C, the park road would extend to the parking area, a new vehicular route would extend to the north to connect with the existing tour road, and a new two-way (two-lane) route would extend from the new connecting point to the new parking area at the Elkhorn Tavern. The new tour road route along the slope of Elkhorn Mountain (below the east overlook) would extend to the new parking area on the south side of the tour road near the Elkhorn Tavern.

Previous cultural resource surveys of the project area indicate historic structures and other archeological resources are near the proposed project area. The NPS will evaluate potential impacts on cultural resources concurrently with the preparation of the EA. A programmatic agreement has also been prepared to address mitigation for potential cultural resource impacts. The EA, including Section 106 compliance, will be sent to you for comment when available.

In accordance with the National Environmental Policy Act (NEPA) and 36 CFR 800 requirements, we are eliciting your comments and invite you to review the proposed project. We appreciate any input you have regarding traditional use, ethnographic resources, and/or traditional cultural properties within or near the proposed study area.

I will continue to keep you informed as the planning effort progresses, and we appreciate receiving any preliminary comments you have by July 25, 2014. If you have questions or need additional information, please don't hesitate to contact me. I can be reached in writing at Pea Ridge National Military Park, 15930, US Hwy 62, Garfield, AR 72732; by email at [kevin\\_eads@nps.gov](mailto:kevin_eads@nps.gov); or by phone at (479) 451-8122, ext. 239. I look forward to continued consultations with your tribe and believe these communications will help ensure that historic properties are adequately considered and protected throughout the planning and implementation of the project.

Sincerely,



Kevin Eads  
Superintendent (Acting)

Enclosure:

Maps illustrating the project area and preliminary alternatives

CC:

Ms. Kim Jumper, Tribal Historic Preservation Officer, Shawnee Tribe of Oklahoma  
Mr. Lynn Malbrough, Environmental Division Head, AHTD



United States Department of the Interior  
NATIONAL PARK SERVICE

Pea Ridge National Military Park  
15930 US Hwy. 62 East  
Garfield, AR 7232

IN REPLY REFER TO:  
H42 (PERI Mitigation EA)

June 24, 2014

Mr. George Tiger, Principal Chief  
Muscogee (Creek) Nation of Oklahoma  
P.O. Box 580  
Okmulgee, OK 74447

**Subject: Scoping Notice — Preparation of an Environmental Assessment for Highway 62 Mitigations at Pea Ridge National Military Park**

Dear Principal Chief Tiger:

The National Park Service (NPS) is beginning an environmental assessment (EA) to evaluate a range of alternatives and associated impacts of providing new access and improved circulation to the park in conjunction with the relocation of Highway 62 in northwestern Arkansas. The existing highway alignment runs along the southern boundary of Pea Ridge National Military Park (park) and provides the only visitor access to the park. The project is needed because the Highway 62 relocation further south will leave the park without an access point to its key features. The purpose of the EA is to identify a safe and convenient access road (and parking) to key features in the park while minimizing impacts on cultural and natural resources.

A letter was sent on March 01, 2013 to notify your tribe of the proposed project and mitigations and included background information on the project. In accordance with Advisory Council on Historic Preservation (ACHP) regulations, 36 CFR Part 800: Protection of Historic Properties, the NPS will comply with Section 106 of the National Historic Preservation Act of 1966, as amended. This letter serves to initiate agency scoping for the project and to continue Section 106 consultation with your tribe. Section 106 consultation is also being initiated with the Arkansas Historic Preservation Program (SHPO) and the ACHP. In addition, scoping has been initiated with other federal, state, and local agencies and the public.

Four action alternatives for mitigation are being considered by the park and are described below. Elements common to all alternatives include a new parking area at the visitor center, extension of the new park road to the new horse trail parking and trailhead east of the visitor center, and a new restroom near the Elkhorn Tavern.

- **Alternative A** – This alternative would locate the new horse trailhead to just east of the visitor center, replace the one-way tour road with a two-lane (two-way) tour road between the visitor center and the Elkhorn Tavern, and would provide a short new one-way route from the tour road on Elkhorn Mountain (below the east overlook) to the two-way portion of the tour road.
- **Alternative B** – In this alternative, the new horse trail area would be in the same area as in Alternative A, the two-lane (two-way) tour road between the visitor center and Elkhorn Tavern would be retained, and a longer new route would extend down the slope of Elkhorn Mountain (below the east overlook) to the new parking area near the Elkhorn Tavern.



- **Alternative C** – In this alternative, the new horse trail area would be located south of Ruddick's field, the park road would extend the full length of the southern boundary, the tour road between the visitor center and the Elkhorn Tavern would remain a one-way route, a new road would be added from the Elkhorn Tavern along historic Huntsville Road to the new park road on the southern boundary, and a longer new route would extend down the slope of Elkhorn Mountain (below the east overlook) to the new parking area near the Elkhorn Tavern.
- **Alternative D** - In this alternative, the new horse trail area would be in the same area as in Alternative C, the park road would extend to the parking area, a new vehicular route would extend to the north to connect with the existing tour road, and a new two-way (two-lane) route would extend from the new connecting point to the new parking area at the Elkhorn Tavern. The new tour road route along the slope of Elkhorn Mountain (below the east overlook) would extend to the new parking area on the south side of the tour road near the Elkhorn Tavern.

Previous cultural resource surveys of the project area indicate historic structures and other archeological resources are near the proposed project area. The NPS will evaluate potential impacts on cultural resources concurrently with the preparation of the EA. A programmatic agreement has also been prepared to address mitigation for potential cultural resource impacts. The EA, including Section 106 compliance, will be sent to you for comment when available.

In accordance with the National Environmental Policy Act (NEPA) and 36 CFR 800 requirements, we are eliciting your comments and invite you to review the proposed project. We appreciate any input you have regarding traditional use, ethnographic resources, and/or traditional cultural properties within or near the proposed study area.

I will continue to keep you informed as the planning effort progresses, and we appreciate receiving any preliminary comments you have by July 25, 2014. If you have questions or need additional information, please don't hesitate to contact me. I can be reached in writing at Pea Ridge National Military Park, 15930, US Hwy 62, Garfield, AR 72732; by email at [kevin\\_eads@nps.gov](mailto:kevin_eads@nps.gov); or by phone at (479) 451-8122, ext. 239. I look forward to continued consultations with your tribe and believe these communications will help ensure that historic properties are adequately considered and protected throughout the planning and implementation of the project.

Sincerely,



Kevin Eads  
Superintendent (Acting)

Enclosure:

Maps illustrating the project area and preliminary alternatives

CC:

Mr. Emman Spain, Tribal Historic Preservation Officer, Muscogee (Creek) Nation of Oklahoma  
Mr. Lynn Malbrough, Environmental Division Head, AHTD



## United States Department of the Interior NATIONAL PARK SERVICE

Pea Ridge National Military Park  
15930 US Hwy. 62 East  
Garfield, AR 7232

IN REPLY REFER TO:  
H42 (PERI Mitigation EA)

June 24, 2014

Ms. Cheryl Smith, Principal Chief  
Jena Band of the Choctaw Indians  
P.O. Box 14  
Jena, LA 71432

### **Subject: Scoping Notice — Preparation of an Environmental Assessment for Highway 62 Mitigations at Pea Ridge National Military Park**

Dear Principal Chief Smith:

The National Park Service (NPS) is beginning an environmental assessment (EA) to evaluate a range of alternatives and associated impacts of providing new access and improved circulation to the park in conjunction with the relocation of Highway 62 in northwestern Arkansas. The existing highway alignment runs along the southern boundary of Pea Ridge National Military Park (park) and provides the only visitor access to the park. The project is needed because the Highway 62 relocation further south will leave the park without an access point to its key features. The purpose of the EA is to identify a safe and convenient access road (and parking) to key features in the park while minimizing impacts on cultural and natural resources.

In accordance with Advisory Council on Historic Preservation (ACHP) regulations, 36 CFR Part 800: Protection of Historic Properties, the NPS will comply with Section 106 of the National Historic Preservation Act of 1966, as amended. This letter serves to initiate agency scoping for the project and to initiate Section 106 consultation with your tribe. Section 106 consultation is also being initiated with the Arkansas Historic Preservation Program (SHPO) and the ACHP. In addition, scoping has been initiated with other federal, state, and local agencies and the public.

Four action alternatives for mitigation are being considered by the park and are described below. Elements common to all alternatives include a new parking area at the visitor center, extension of the new park road to the new horse trail parking and trailhead east of the visitor center, and a new restroom near the Elkhorn Tavern.

- **Alternative A** – This alternative would locate the new horse trailhead to just east of the visitor center, replace the one-way tour road with a two-lane (two-way) tour road between the visitor center and the Elkhorn Tavern, and would provide a short new one-way route from the tour road on Elkhorn Mountain (below the east overlook) to the two-way portion of the tour road.
- **Alternative B** – In this alternative, the new horse trail area would be in the same area as in Alternative A, the two-lane (two-way) tour road between the visitor center and Elkhorn Tavern would be retained, and a longer new route would extend down the slope of Elkhorn Mountain (below the east overlook) to the new parking area near the Elkhorn Tavern.



- **Alternative C** – In this alternative, the new horse trail area would be located south of Ruddick's field, the park road would extend the full length of the southern boundary, the tour road between the visitor center and the Elkhorn Tavern would remain a one-way route, a new road would be added from the Elkhorn Tavern along historic Huntsville Road to the new park road on the southern boundary, and a longer new route would extend down the slope of Elkhorn Mountain (below the east overlook) to the new parking area near the Elkhorn Tavern.
- **Alternative D** - In this alternative, the new horse trail area would be in the same area as in Alternative C, the park road would extend to the parking area, a new vehicular route would extend to the north to connect with the existing tour road, and a new two-way (two-lane) route would extend from the new connecting point to the new parking area at the Elkhorn Tavern. The new tour road route along the slope of Elkhorn Mountain (below the east overlook) would extend to the new parking area on the south side of the tour road near the Elkhorn Tavern.

Previous cultural resource surveys of the project area indicate historic structures and other archeological resources are near the proposed project area. The NPS will evaluate potential impacts on cultural resources concurrently with the preparation of the EA. A programmatic agreement has also been prepared to address mitigation for potential cultural resource impacts. The EA, including Section 106 compliance, will be sent to you for comment when available.

In accordance with the National Environmental Policy Act (NEPA) and 36 CFR 800 requirements, we are eliciting your comments and invite you to review the proposed project. We appreciate any input you have regarding traditional use, ethnographic resources, and/or traditional cultural properties within or near the proposed study area.

I will continue to keep you informed as the planning effort progresses, and we appreciate receiving any preliminary comments you have by July 25, 2014. If you have questions or need additional information, please don't hesitate to contact me. I can be reached in writing at Pea Ridge National Military Park, 15930, US Hwy 62, Garfield, AR 72732; by email at [kevin\\_eads@nps.gov](mailto:kevin_eads@nps.gov); or by phone at (479) 451-8122, ext. 239. I look forward to continued consultations with your tribe and believe these communications will help ensure that historic properties are adequately considered and protected throughout the planning and implementation of the project.

Sincerely,



Kevin Eads  
Superintendent (Acting)

Enclosure:

Maps illustrating the project area and preliminary alternatives

CC:

Ms. Dana Masters, Cultural Heritage Director, Jena Band of the Choctaw Indians  
Mr. Lynn Malbrough, Environmental Division Head, AHTD





United States Department of the Interior  
NATIONAL PARK SERVICE

Pea Ridge National Military Park  
15930 US Hwy. 62 East  
Garfield, AR 7232

IN REPLY REFER TO:  
H42 (PERI Mitigation EA)

June 24, 2014

Mr. Bill John Baker, Principal Chief  
Cherokee Nation of Oklahoma  
P.O. Box 948  
Tahlequah, OK 74465

**Subject: Scoping Notice — Preparation of an Environmental Assessment for Highway 62 Mitigations at Pea Ridge National Military Park**

Dear Principal Chief Baker:

The National Park Service (NPS) is beginning an environmental assessment (EA) to evaluate a range of alternatives and associated impacts of providing new access and improved circulation to the park in conjunction with the relocation of Highway 62 in northwestern Arkansas. The existing highway alignment runs along the southern boundary of Pea Ridge National Military Park (park) and provides the only visitor access to the park. The project is needed because the Highway 62 relocation further south will leave the park without an access point to its key features. The purpose of the EA is to identify a safe and convenient access road (and parking) to key features in the park while minimizing impacts on cultural and natural resources.

A letter was sent on March 01, 2013 to notify your tribe of the proposed project and mitigations and included background information on the project. In accordance with Advisory Council on Historic Preservation (ACHP) regulations, 36 CFR Part 800: Protection of Historic Properties, the NPS will comply with Section 106 of the National Historic Preservation Act of 1966, as amended. This letter serves to initiate agency scoping for the project and to continue Section 106 consultation with your tribe. Section 106 consultation is also being initiated with the Arkansas Historic Preservation Program (SHPO) and the ACHP. In addition, scoping has been initiated with other federal, state, and local agencies and the public.

Four action alternatives for mitigation are being considered by the park and are described below. Elements common to all alternatives include a new parking area at the visitor center, extension of the new park road to the new horse trail parking and trailhead east of the visitor center, and a new restroom near the Elkhorn Tavern.

- **Alternative A** – This alternative would locate the new horse trailhead to just east of the visitor center, replace the one-way tour road with a two-lane (two-way) tour road between the visitor center and the Elkhorn Tavern, and would provide a short new one-way route from the tour road on Elkhorn Mountain (below the east overlook) to the two-way portion of the tour road.
- **Alternative B** – In this alternative, the new horse trail area would be in the same area as in Alternative A, the two-lane (two-way) tour road between the visitor center and Elkhorn Tavern would be retained, and a longer new route would extend down the slope of Elkhorn Mountain (below the east overlook) to the new parking area near the Elkhorn Tavern.

- **Alternative C** – In this alternative, the new horse trail area would be located south of Ruddick's field, the park road would extend the full length of the southern boundary, the tour road between the visitor center and the Elkhorn Tavern would remain a one-way route, a new road would be added from the Elkhorn Tavern along historic Huntsville Road to the new park road on the southern boundary, and a longer new route would extend down the slope of Elkhorn Mountain (below the east overlook) to the new parking area near the Elkhorn Tavern.
- **Alternative D** - In this alternative, the new horse trail area would be in the same area as in Alternative C, the park road would extend to the parking area, a new vehicular route would extend to the north to connect with the existing tour road, and a new two-way (two-lane) route would extend from the new connecting point to the new parking area at the Elkhorn Tavern. The new tour road route along the slope of Elkhorn Mountain (below the east overlook) would extend to the new parking area on the south side of the tour road near the Elkhorn Tavern.

Previous cultural resource surveys of the project area indicate historic structures and other archeological resources are near the proposed project area. The NPS will evaluate potential impacts on cultural resources concurrently with the preparation of the EA. A programmatic agreement has also been prepared to address mitigation for potential cultural resource impacts. The EA, including Section 106 compliance, will be sent to you for comment when available.

In accordance with the National Environmental Policy Act (NEPA) and 36 CFR 800 requirements, we are eliciting your comments and invite you to review the proposed project. We appreciate any input you have regarding traditional use, ethnographic resources, and/or traditional cultural properties within or near the proposed study area.

I will continue to keep you informed as the planning effort progresses, and we appreciate receiving any preliminary comments you have by July 25, 2014. If you have questions or need additional information, please don't hesitate to contact me. I can be reached in writing at Pea Ridge National Military Park, 15930, US Hwy 62, Garfield, AR 72732; by email at [kevin\\_eads@nps.gov](mailto:kevin_eads@nps.gov); or by phone at (479) 451-8122, ext. 239. I look forward to continued consultations with your tribe and believe these communications will help ensure that historic properties are adequately considered and protected throughout the planning and implementation of the project.

Sincerely,



Kevin Eads  
Superintendent (Acting)

Enclosure:

Maps illustrating the project area and preliminary alternatives

CC:

Dr. Richard Allen, Policy Analyst & NAGPRA/Section 106 Review, Cherokee Nation of Oklahoma  
Mr. Lynn Malbrough, Environmental Division Head, AHTD



United States Department of the Interior  
NATIONAL PARK SERVICE

Pea Ridge National Military Park  
15930 US Hwy. 62 East  
Garfield, AR 7232

IN REPLY REFER TO:  
H42 (PERI Mitigation EA)

June 24, 2014

Ms. Brenda Shemayne Edwards, Chairperson  
Caddo Nation  
P.O. Box 487  
Binger, OK 73009

**Subject: Scoping Notice — Preparation of an Environmental Assessment for Highway 62 Mitigations at Pea Ridge National Military Park**

Dear Chairperson Shemayne Edwards:

The National Park Service (NPS) is beginning an environmental assessment (EA) to evaluate a range of alternatives and associated impacts of providing new access and improved circulation to the park in conjunction with the relocation of Highway 62 in northwestern Arkansas. The existing highway alignment runs along the southern boundary of Pea Ridge National Military Park (park) and provides the only visitor access to the park. The project is needed because the Highway 62 relocation further south will leave the park without an access point to its key features. The purpose of the EA is to identify a safe and convenient access road (and parking) to key features in the park while minimizing impacts on cultural and natural resources.

A letter was sent on March 12, 2013 to notify your tribe of the proposed project and mitigations and included background information on the project. In accordance with Advisory Council on Historic Preservation (ACHP) regulations, 36 CFR Part 800: Protection of Historic Properties, the NPS will comply with Section 106 of the National Historic Preservation Act of 1966, as amended. This letter serves to initiate agency scoping for the project and to continue Section 106 consultation with your tribe. Section 106 consultation is also being initiated with the Arkansas Historic Preservation Program (SHPO) and the ACHP. In addition, scoping has been initiated with other federal, state, and local agencies and the public.

Four action alternatives for mitigation are being considered by the park and are described below. Elements common to all alternatives include a new parking area at the visitor center, extension of the new park road to the new horse trail parking and trailhead east of the visitor center, and a new restroom near the Elkhorn Tavern.

- **Alternative A** – This alternative would locate the new horse trailhead to just east of the visitor center, replace the one-way tour road with a two-lane (two-way) tour road between the visitor center and the Elkhorn Tavern, and would provide a short new one-way route from the tour road on Elkhorn Mountain (below the east overlook) to the two-way portion of the tour road.
- **Alternative B** – In this alternative, the new horse trail area would be in the same area as in Alternative A, the two-lane (two-way) tour road between the visitor center and Elkhorn Tavern would be retained, and a longer new route would extend down the slope of Elkhorn Mountain (below the east overlook) to the new parking area near the Elkhorn Tavern.



- **Alternative C** – In this alternative, the new horse trail area would be located south of Ruddick's field, the park road would extend the full length of the southern boundary, the tour road between the visitor center and the Elkhorn Tavern would remain a one-way route, a new road would be added from the Elkhorn Tavern along historic Huntsville Road to the new park road on the southern boundary, and a longer new route would extend down the slope of Elkhorn Mountain (below the east overlook) to the new parking area near the Elkhorn Tavern.
- **Alternative D** - In this alternative, the new horse trail area would be in the same area as in Alternative C, the park road would extend to the parking area, a new vehicular route would extend to the north to connect with the existing tour road, and a new two-way (two-lane) route would extend from the new connecting point to the new parking area at the Elkhorn Tavern. The new tour road route along the slope of Elkhorn Mountain (below the east overlook) would extend to the new parking area on the south side of the tour road near the Elkhorn Tavern.

Previous cultural resource surveys of the project area indicate historic structures and other archeological resources are near the proposed project area. The NPS will evaluate potential impacts on cultural resources concurrently with the preparation of the EA. A programmatic agreement has also been prepared to address mitigation for potential cultural resource impacts. The EA, including Section 106 compliance, will be sent to you for comment when available.

In accordance with the National Environmental Policy Act (NEPA) and 36 CFR 800 requirements, we are eliciting your comments and invite you to review the proposed project. We appreciate any input you have regarding traditional use, ethnographic resources, and/or traditional cultural properties within or near the proposed study area.

I will continue to keep you informed as the planning effort progresses, and we appreciate receiving any preliminary comments you have by July 25, 2014. If you have questions or need additional information, please don't hesitate to contact me. I can be reached in writing at Pea Ridge National Military Park, 15930, US Hwy 62, Garfield, AR 72732; by email at [kevin\\_eads@nps.gov](mailto:kevin_eads@nps.gov); or by phone at (479) 451-8122, ext. 239. I look forward to continued consultations with your tribe and believe these communications will help ensure that historic properties are adequately considered and protected throughout the planning and implementation of the project.

Sincerely,



Kevin Eads  
Superintendent (Acting)

Enclosure:

Maps illustrating the project area and preliminary alternatives

CC:

Mr. Robert Cast, Tribal Historic Preservation Officer, Caddo Nation  
Mr. Lynn Malbrough, Environmental Division Head, AHTD

PEA RIDGE NATIONAL MILITARY PARK  
HIGHWAY 62 MITIGATIONS ENVIRONMENTAL ASSESSMENT  
PUBLIC SCOPING SUMMARY

1  
2  
3  
4  
5  
6  
7

**Attachment B – Scoping Announcements**

Press Release

Public Scoping Announcement



National Park Service  
U.S. Department of the Interior

Pea Ridge  
National Military Park

15930 Highway 62  
Garfield, AR 72732  
<http://www.nps.gov/peri>

479-451-8122 phone  
479-451-0219 fax

---

## Pea Ridge National Military Park News Release

June 25, 2014

For Immediate Release

Media Contact Kevin Eads 479-451-8122 x 239

### Highway 62 Mitigations Environmental Assessment Planned at Pea Ridge National Military Park

Pea Ridge National Military Park is pleased to announce that it is in the process of developing an environmental assessment (EA) addressing mitigations identified for the park through Section 4(f) because of the removal of Highway 62 from the park boundaries. The EA will be prepared in compliance with the National Environmental Policy Act (NEPA) to provide the decision-making framework that 1) analyzes a reasonable range of alternatives to meet project objectives, 2) evaluates issues and impacts on park resources and values, and 3) identifies mitigation measures to lessen the degree or extent of these impacts. The EA will also be used to coordinate compliance with the requirements of Section 106 of the National Historic Preservation Act pursuant to 36 Code of Federal Regulations Part 800.8(c).

The purpose of the EA is to identify a safe and convenient access road and parking to key features in the park while minimizing impacts on cultural and natural resources. The project is needed because the main park road currently serving the developed area will be removed from the park and relocated along the southern park boundary as part of another project with the Arkansas State Highway and Transportation Department. When Highway 62 is relocated, there will be no road serving as the park entrance. With no road, visitors and employees will not have access to the area.

We invite you to participate, through consultation with the park, in the analysis of draft alternatives by going to our Planning, Environment and Public Comment website located at <http://parkplanning.nps.gov/projectHome.cfm?projectID=46500>.

Public review for this plan is currently open and will close July 25, 2014. The public's participation in the development of the EA is greatly valued and desired.

Pea Ridge National Military Park was established in 1956 to commemorate and preserve the site of the March 1862 Civil War battle that helped Union forces gain control of Missouri. The park is located 10 miles north of Rogers on Highway 62.

- 
- 

[National Park Service U.S. Department of the Interior](#)

Search:

- [" this park](#)
- [" NPS.gov](#)
  
- [Find a Park](#)
- [Discover History](#)
  - [People](#)
  - [Places](#)
  - [Stories](#)
  - [Preservation](#)
  - [Collections](#)
  - [For Travelers](#)
  - [For Teachers](#)
  - [For Kids](#)
  - [Publications](#)
- [Explore Nature](#)
  - [Air Resources](#)
  - [Biological Resources](#)
  - [Climate Change](#)
  - [Environmental Quality](#)
  - [Geologic Resources](#)
  - [Inventory & Monitoring](#)
  - [National Natural Landmarks](#)
  - [Natural Sounds & Night Skies](#)
  - [Partnerships](#)
  - [Photos & Multimedia](#)
  - [Publications](#)
  - [Research Learning Centers](#)
  - [Science & Research](#)
  - [Social Science](#)
  - [Water Resources](#)
- [Get Involved](#)
  - [Volunteer](#)
  - [Donate](#)
  - [Partner](#)
  - [Do Your Part](#)
- [Working with Communities](#)
  - [Tax Incentives](#)
  - [National Register of Historic Places](#)
  - [Preservation](#)
  - [Outdoor Recreation](#)
  - [National Historic Trails](#)
- [Teachers](#)
  - [Parks as Classrooms](#)
  - [Professional Development](#)
  - [Distance Learning](#)
- [Kids](#)
- [About Us](#)
  - [Work With Us](#)
  - [Jobs for Students](#)
  - [Budget](#)
  - [Doing Business with Us](#)
  - [Laws & Policies](#)
  - [Publications](#)
  
-



# Pea Ridge

## National Military Park Arkansas

- [small](#)
  - [medium](#)
  - [large](#)
- [print](#)

## Explore This Park

- [Park Home](#)
- [Plan Your Visit](#)
- [Photos & Multimedia](#)
- [History & Culture](#)
- [For Teachers](#)
- [For Kids](#)
- [News](#)
- [Management](#)
- [Support Your Park](#)
- [Bookstore](#)

## Park Tools

- [View Park Map](#)
- [FAQs](#)
- [Contact Us](#)
- [Site Index](#)
- [Español](#)

There are park alerts in effect.  
[show Alerts »](#)

# Highway 62 Mitigation: Environmental Assessment Planned at Pea Ridge National Military Park

**Date:** June 24, 2014

[Subscribe](#)  | [What is RSS](#)

Pea Ridge National Military Park is pleased to announce that it is in the process of developing an environmental assessment (EA) addressing mitigations identified for the park through Section 4(f) because of the removal of Highway 62 from the park boundaries. The EA will be prepared in compliance with the National Environmental Policy Act (NEPA) to provide the decision-making framework that 1) analyzes a reasonable range of alternatives to meet project objectives, 2) evaluates issues and impacts on park resources and values, and 3) identifies mitigation measures to lessen the degree or extent of these impacts. The EA will also be used to coordinate compliance with the requirements of Section 106 of the National Historic Preservation Act pursuant to 36 Code of Federal Regulations Part 800.8(c).

The purpose of the EA is to identify a safe and convenient



We invite you to participate, through consultation with the park, in the analysis of draft alternatives by going to our Planning, Environment and Public Comment website located at <http://parkplanning.nps.gov/projectHome.cfm?projectID=46500>.

Public review for this plan is currently open and will close July 25, 2014. The public's participation in the development of the EA is greatly valued and desired.

Pea Ridge National Military Park was established in 1956 to commemorate and preserve the site of the March 1862 Civil War battle that helped Union forces gain control of Missouri. The park is located 10 miles north of Rogers on Highway 62.

## Highway Mitigation Maps

[Highway 62 Removal Mitigation EA Project Area Map](#)

## Preliminary Highway 62 Mitigation - Alternative A

## Preliminary Highway 62 Mitigation - Alternative B

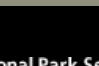
## Preliminary Highway 62 Mitigation - Alternative C

## Preliminary Highway 62 Mitigation - Alternative D

## Did You Know?



*When Confederate General Van Dorn heard news that Curtis pushed Price out of Missouri, he set out to take personal charge of an attack on Curtis, along with Price and McCulloch. He arrived at Price's headquarters in an ambulance, braving a severe illness resulting from falling into an icy stream.*



National Park Service

U.S. Department of the Interior

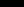
SITE MAP

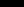
EXPERIENCE YOUR AMERICA™

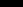
[Frequently Asked Questions](#)

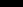
[Website Policies](#)

[Contact Us](#)

 [Facebook](#)

 [Twitter](#)

 [YouTube](#)

 [iTunes](#)

Last Updated: 06/27/2014

PEA RIDGE NATIONAL MILITARY PARK  
HIGHWAY 62 MITIGATIONS ENVIRONMENTAL ASSESSMENT  
PUBLIC SCOPING SUMMARY

1  
2  
3  
4  
5  
6  
7

**Attachment C – Agency and Tribal Scoping Responses**

SHPO  
ACHP  
USFWS



The Department of  
**Arkansas  
Heritage**

Mike Beebe  
Governor

Martha Miller  
Director

Arkansas Arts Council

Arkansas Natural Heritage  
Commission

Delta Cultural Center

Historic Arkansas Museum

Mosaic Templars  
Cultural Center

Old State House Museum



Arkansas Historic  
Preservation Program

323 Center Street, Suite 1500  
Little Rock, AR 72201  
(501) 324-9880  
fax: (501) 324-9184  
tdd: (501) 324-9811

e-mail:

[info@arkansaspreservation.org](mailto:info@arkansaspreservation.org)

website:

[www.arkansaspreservation.org](http://www.arkansaspreservation.org)

An Equal Opportunity Employer



July 24, 2014

Mr. Kevin Eads  
Superintendent (Acting)  
National Park Service  
Pea Ridge National Military Park  
15930 U.S. Highway 62 East  
Garfield, Arkansas 72732

Re: Benton County – Pea Ridge National Military Park  
Section 106 Review – NPS  
Comments on Scoping Notice for Preparation of an Environmental  
Assessment for Highway 62 Mitigations  
H42 (PERI Mitigation EA)  
AHPP Tracking Number 90607

Dear Mr. Eads:

This letter is in response to your recent request for consultation regarding the potential alternates for the configuration of Pea Ridge National Military Park (hereafter 'park') roads and other facilities following the relocation of U.S. Highway 62 to the southern margins of the park.

The staff of the Arkansas Historic Preservation Program has reviewed the alternates submitted for the project. Based on this review, it is our opinion that Alternate A is the best choice. This choice is based on the fact that this alternate appears to result in the least removal of the old Tour Road, which we feel is likely eligible for inclusion in the National Register of Historic Places because of its association with the Mission 66 initiative within the National Park Service and the rarity of Mission 66-associated facilities in Arkansas. Also, because this alternate appears to entail the least ground disturbance, it appears least likely to impact archeological resources.

We look forward to working with you to complete this exciting project. Please refer to the AHPP Tracking Number listed above in all correspondence. If you have any questions, please call Eric Gilliland of my staff at 501-324-9270.

Sincerely,

for: Frances McSwain  
Deputy State Historic Preservation Officer

cc: Mr. Steve Adams, National Park Service  
Dr. Richard Allen, Cherokee Nation of Oklahoma  
Mr. Everett Bandy, Quapaw Tribe of Oklahoma

Ms. Rebecca Brave, Osage Nation  
Mr. Ken Carleton, Mississippi Band of Choctaw Indians  
Dr. Ann Early, Arkansas Archeological Survey  
Mr. John Fleming, AHTD  
Ms. Lisa LaRue-Baker, United Keetoowah Band of Cherokee Indians  
Ms. Dana Masters, Jena Band of Choctaw Indians  
Mr. Emman Spain, Muscogee (Creek) Nation of Oklahoma  
Dr. Ian Thompson, Choctaw Nation of Oklahoma





Preserving America's Heritage

August 4, 2014

Mr. Kevin Eads  
Acting Superintendent  
Pea Ridge National Military Park  
15930 US Hwy 62 East  
Garfield, Arkansas 72732

**Ref: *Environmental Assessment for Highway 62 Mitigations at Pea Ridge National Military Park  
Benton, Arkansas***

Dear Mr. Eads:

The Advisory Council on Historic Preservation (ACHP) received your letter providing notice of scoping pursuant to the National Environmental Policy Act (NEPA) and initiation of Section 106 consultation regarding the referenced undertaking. We understand that the current Environmental Assessment (EA) will be a more detailed analysis of the alternatives and effects of the mitigation previously negotiated, committed to, and documented in the *Programmatic Agreement (PA) Among the Federal Highway Administration (FHWA), Arkansas State Highway and Transportation Department (AHTD), Arkansas State Historic Preservation Office (SHPO), National Park Service (NPS) Pea Ridge National Military Park, Caddo Nation, Cherokee Nation of Oklahoma, Quapaw Tribe of Oklahoma, Osage Nation, and United Keetoowah Band of Cherokee Indians Regarding the Construction of AHTD Job Number 090204 Avoca-Gateway (Hwy. 62), Benton County, AR*, executed in March 2012 and filed with the ACHP.

Since the ACHP did not participate in the 2012 PA, we do not plan to participate in the current Section 106 consultation, unless controversy should develop and the NPS or another party should contact us or request our involvement.

If no changes to the effects of the mitigation are revealed through the consultation, then NPS and FHWA may conclude the process with concurrence from the consulting parties on such a finding. Should the consultation result in a finding of adverse effects to historic properties that were unanticipated by the 2012 PA, the ACHP recommends that NPS and FHWA conclude the Section 106 process for the EA by amending the 2012 PA with any agreed upon measures to resolve such adverse effects. Pursuant to 36 CFR §800.6(b)(1)(iv), you would need to file the final amended PA and related documentation with the ACHP at the conclusion of the consultation process. The filing of the amended PA and supporting documentation with the ACHP is required in order to complete the requirements of Section 106 of the National Historic Preservation Act.

Thank you for providing us with your notification of scoping and initiation of Section 106 consultation. If

ADVISORY COUNCIL ON HISTORIC PRESERVATION

401 F Street, Suite 308 • Washington, DC 20001-2637

Phone: 202-517-0200 • Fax: 202-517-6381 • [achp@achp.gov](mailto:achp@achp.gov) • [www.achp.gov](http://www.achp.gov)

you have any questions or require our further assistance, please contact Katry Harris by telephone at (202) 517-0213 or by e-mail at [kharris@achp.gov](mailto:kharris@achp.gov).

Sincerely,

A handwritten signature in dark ink, appearing to read "Caroline D. Hall", with a stylized, cursive script.

Caroline D. Hall  
Assistant Director  
Office of Federal Agency Programs  
Federal Real Property Management Section



Eads, Gregory &lt;kevin\_eads@nps.gov&gt;

---

## Re: Mitigation Efforts within Pea Ridge NMP Environmental Assessment Correspondence

1 message

---

Wine, Mitch <mitch\_wine@fws.gov>  
To: "Eads, Gregory" <kevin\_eads@nps.gov>

Mon, Aug 11, 2014 at 9:07 AM

Kevin,

I apologize as I was unaware the June 24, 2014 letter required a response from our office. The four alternatives proposed to provide access to park facilities once Highway 62 is relocated to the south of the park each appear to have minor adverse effects to fish and wildlife resources, with no effects anticipated to listed species. The Service has no further substantive comments on the proposed project. Thank you for the opportunity to comment on the proposed project and feel free to contact me if you require further documentation.

\*\*\*\*\*

Mitch Wine  
Fish & Wildlife Biologist

United States Fish and Wildlife Service  
Ecological Services  
110 South Amity Road, Suite 300  
Conway, AR 72032

(501) 513-4488 (voice)  
(501) 513-4480 (fax)  
(501) 350-7663 (cell)  
email: [mitch\\_wine@fws.gov](mailto:mitch_wine@fws.gov)  
<http://www.fws.gov/arkansas-es/>

On Sat, Aug 9, 2014 at 11:37 AM, Eads, Gregory <[kevin\\_eads@nps.gov](mailto:kevin_eads@nps.gov)> wrote:

Mitch,

Were preparing an environmental assessment for the work that will be done within the park as a result of the removal of highway 62 out of the park.

I sent a letter, February 2013, which you responded to March 2013 for initial consultation, attached. David Peitz a Biologist with our Inventory and Monitoring, NPS, conducted a bird survey and was in contact with you as well. I have his information and report that resulted with his conversations

with you, attached.

We had progressed with the EA to the point of Public Scoping so I sent you another letter this past June that explained the preliminary alternatives that were proposed for the work inside the park, attached.

I was wondering if I could get a response from you on the second letter? An email would work fine or letter, which ever you prefer. I hate to ask but, if possible, was wanting additional documentation for the EA.

I sincerely appreciate it,

Kevin

--

Kevin Eads  
Chief of Resources Management  
Pea Ridge National Military Park  
15930 E. Hwy 62  
Garfield, Arkansas 72732  
Office (479) 451-8122 X 239