

# TULE LAKE UNIT

## WWII VALOR IN THE PACIFIC NATIONAL MONUMENT

---

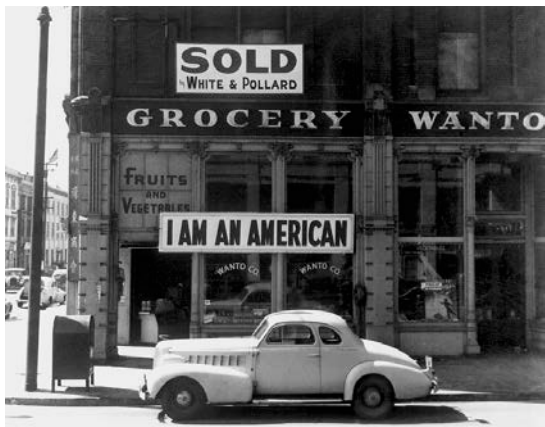
### General Management Plan and Environmental Assessment



**PUBLIC MEETINGS - NOVEMBER 2016 – JANUARY 2017**

# Significance

- Exclusion
- Incarceration
- 10 primary camps
- 120,000 people



# Significance

---

- Loyalty questions
- Protest and resistance
- Segregation
- Renunciation
- Long-lasting stigma
- Civil Liberties Act of 1988



# Tule Lake Unit Background

---

- December 2008 – Designation
- One unit of World War II Valor in the Pacific National Monument
- Co-managed with Lava Beds National Monument



# GMP Timeline

---

<b>2013</b>	Public scoping
<b>2014 -15</b>	Develop GMP/EA
<b>2016</b>	GMP/EA Public Review
<b>2017</b>	Decision



# Alternatives

---

- Alternative A: No Action
- Alternative B: Limited Operations
- Alternative C: Preferred



# Alternative C: Preferred Alternative

---

1. Raise national awareness about the Tule Lake Unit
2. Protect historic resources
3. Open year-round visitation
4. Enhance partnerships
5. Recommend name change to Tule Lake National Historic Site
6. Implemented in phases



# Interpretation and Education

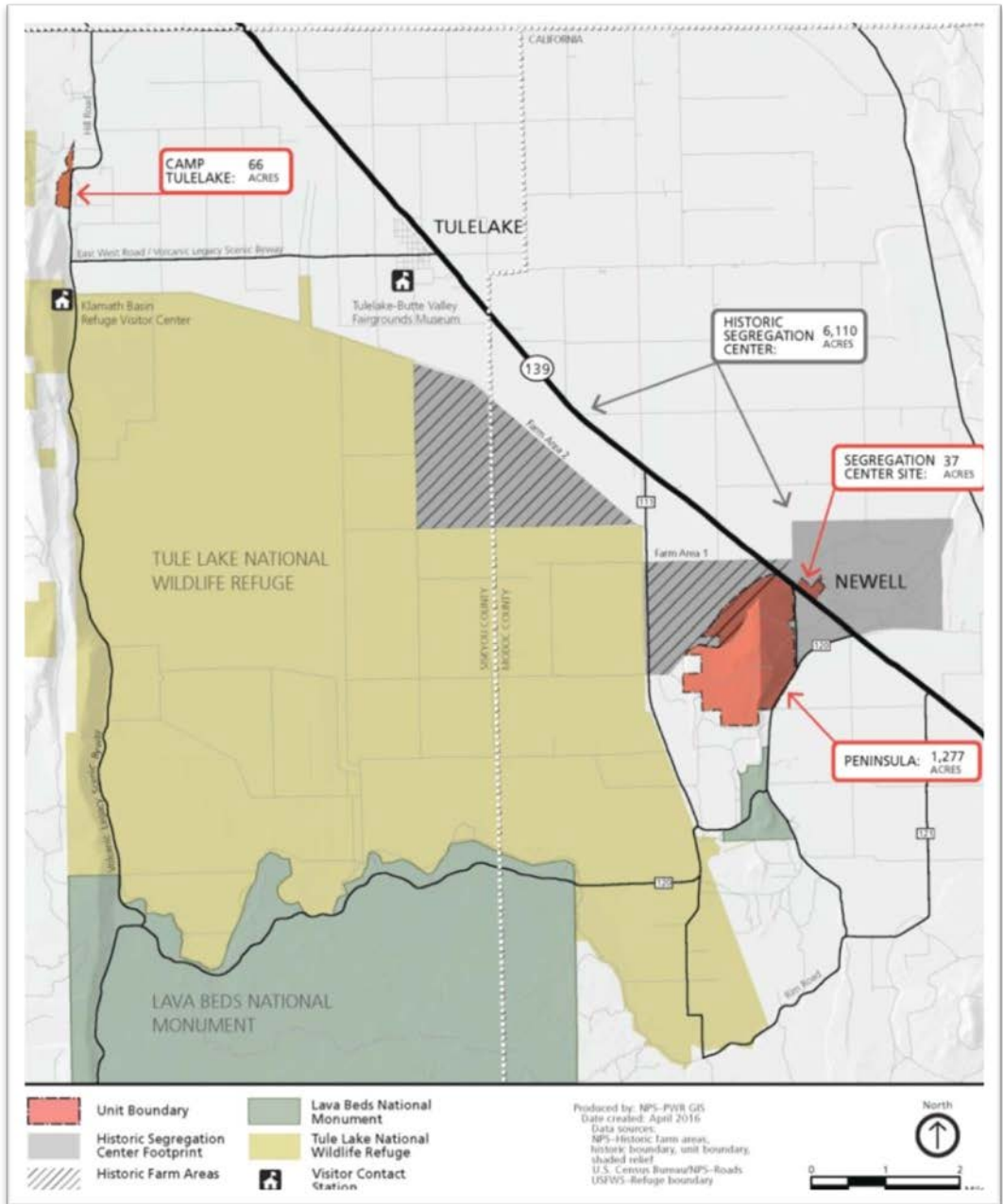
---

- Focus on engaging youth
- Use a technology and digital media
- Develop outreach programs
- Provide immersive and self-guided visitor opportunities



# Tule Lake Unit

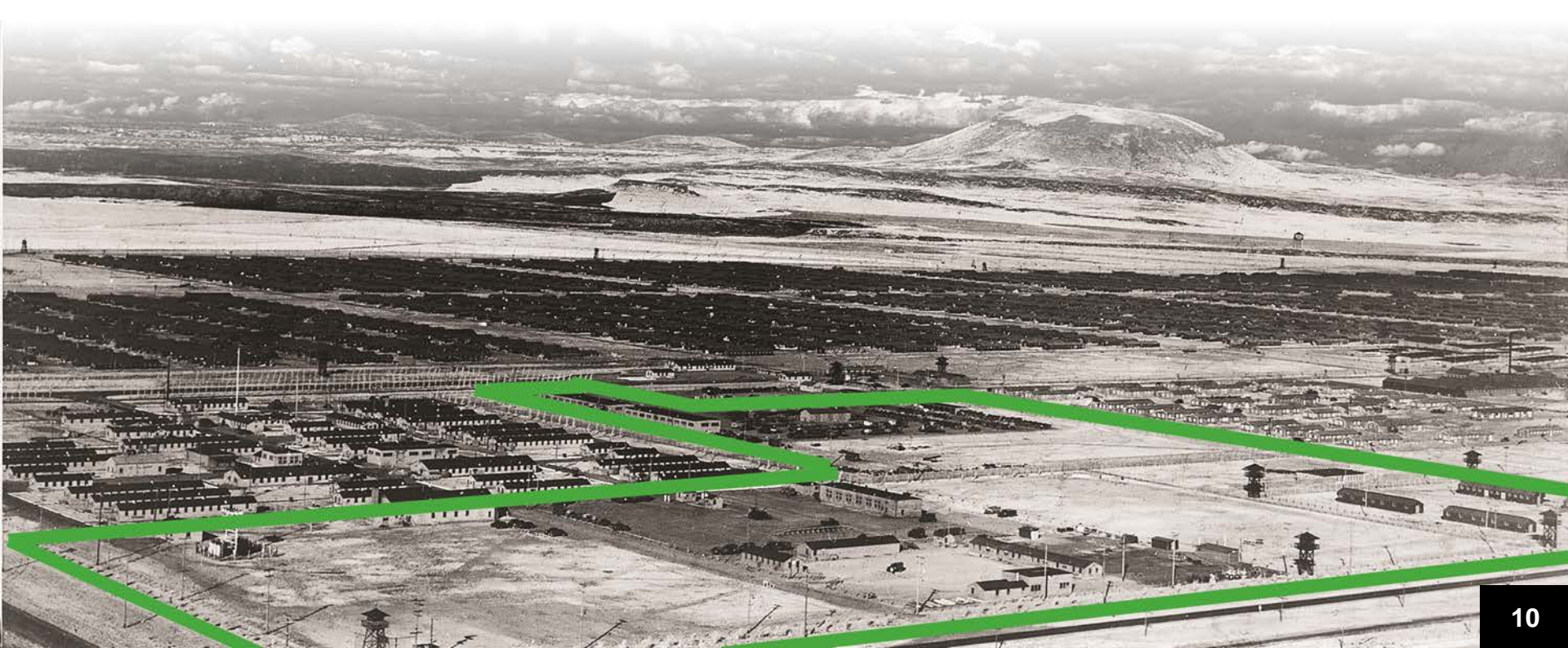
- Segregation Center
- Camp Tulelake
- Peninsula



# Segregation Center

---

- Segregation Center site – NPS manages only 37 of 908 acres within the fence
- No residential areas within the NPS unit



# Segregation Center

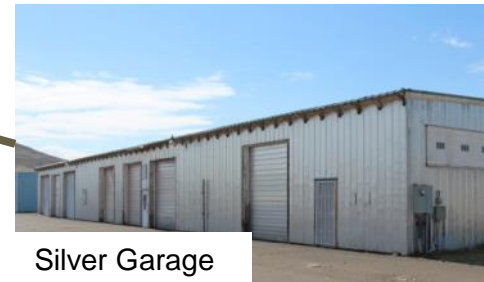
---

- Newell – homesteading town built on Segregation Center site



# Segregation Center

- **Phase 1:** Ditch Rider house – temporary visitor contact  
Jail and Stockade – restoration and reconstruction
- **Phase 2:** Carpenter Shop – visitor facility
- **Phase 3:** Silver Garage – administration/maintenance facility  
Stockade – reconstruct barrack



# Camp Tulelake

- Co-manage with USFWS
- Extended summer season public access
- **Phase 1:** Stabilize at-risk historic structures  
Install vault toilet
- **Phase 2:** Formalize parking, roads, and trails
- **Phase 3:** Rehabilitate Barracks north wing



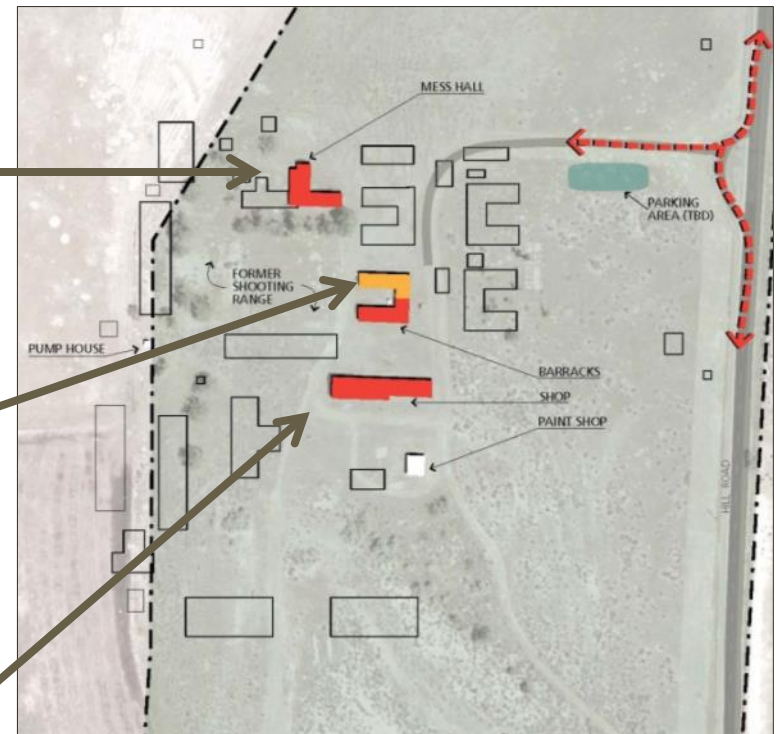
Mess Hall



Barracks



Shop



# Peninsula

- Co-manage with USFWS
- Ranger-guided tours, access closed at all other times
- Explore additional public access with USFWS and tribes
- Resource management



# Boundaries

---

- Boundary additions are not recommended in GMP
- Partner with local landowners
- Explore potential boundary modifications with willing landowners



# Questions and Comments

---

- **Comment in-person, online, email, letter, comment form**
- **Comment deadline: February 10, 2017**
- **Email: [tule\\_superintendent@nps.gov](mailto:tule_superintendent@nps.gov)**
- **Website: [parkplanning.nps.gov/TuleLakeGMP](http://parkplanning.nps.gov/TuleLakeGMP)**

