

**APPENDIX B: SOCIOECONOMICS AND ENVIRONMENTAL
JUSTICE DATA UPDATE**

Socioeconomics and Environmental Justice Data Update

A comprehensive analysis of socioeconomic resources was conducted in the Final Environmental Impact Statement (FEIS). The socioeconomic environment evaluated for the FEIS and this EA encompasses the Outer Banks portion of two counties in North Carolina – Dare and Hyde counties.

Twenty-four block groups of the Outer Banks portion of Dare and Hyde counties form the economic region of influence (ROI) and define the geographic area in which the predominant social and economic impacts from this EA's proposed action could take place. Demographic and economic figures and tables from the FEIS were updated to reflect 2010 or later. Dare County currently consists of 24 block groups total; compared to Dare County's 19 block groups in 2000. The socioeconomic ROI in this EA includes all but one of the 24 block groups in Dare County. Data for one block group in Hyde County is also included in the socioeconomic ROI. Data tables for a total of 24 block groups, then, were updated in the below section. Data not available at the block group level is reported at the county level. The state of North Carolina is again used for purposes of comparison and represents the general population.

Demographics

Demographic data tables from the FEIS were updated to reflect 2010 figures. The 2000 census block group figures were taken directly from the FEIS, and as such represent demographics of the ROI as defined for analysis in the FEIS. Those 19 block groups in Dare and Hyde counties are denoted in tables with the superscript "a." The area defined as the ROI for the 2010 FEIS and this EA are not actually different. But as mentioned above, due to block group lines having been re-drawn somewhat since 2000, the 2010 ROI consists of 24 block groups in both Dare and Hyde counties, and is denoted with the superscript "b." Note that all demographic data presented are from the U.S. Census Bureau, which places individuals according to "usual residence" guidelines, or where individuals reside the majority of the year.

As mentioned in the FEIS, in recent years population trends have differed substantially for Dare and Hyde counties. Table 1 provides population statistics for the state of North Carolina, Dare and Hyde counties, and block groups for both counties located on the Outer Banks. Between 2000 and 2010, Dare County's population grew 13.2 percent, from 29,967 to 33,920. This is a lower percentage change in population than the state of

North Carolina as a whole. During this same period, the population of Hyde County decreased by 0.3 percent, from 5,826 to 5,810. The Dare County block groups within the ROI account for 96.3 percent of Dare County’s population, while the Hyde County block group represents only 16.3 percent of Hyde County’s population (U.S. Census Bureau 2010a-e).

Table 1. Population Statistics

Geographic Area	2000	2010	2020	2030	Percent Change, 2000-2010	Percent Change, 2010-2030
Dare County	29,967	33,920	38,977	44,186	13.2	47.4
Dare County block groups	28,798 ^a	32,674 ^b	-	-	-	-
Hyde County	5,826	5,810	5,928	6,154	-0.3	5.6
Hyde County block group	730 ^a	948 ^b	-	-	-	-
North Carolina	8,049,313	9,535,483	10,629,051	11,712,234	18.5	45.5

Source: U.S. Census Bureau, 2010a-e; Office of State Budget and Management, 2013.

^a Includes block group(s) in ROI as defined in FEIS.

^b Includes block group(s) in ROI for this EA.

According to population projections published by the North Carolina’s Office of State Budget and Management State Demographics Unit, the state and both counties are expected to grow positively in the foreseeable future. In 2007, Hyde and Dare County populations were expected to shrink by 19 and 13 percent, respectively. As of 2013, Hyde County is expected to grow by 5.6 percent by 2030 and Dare County by almost 50 percent (Office of State Budget and Management 2013).

As discussed in the 2010 FEIS, demographic and economic trends during the last three decades have contributed to growing differences in the population characteristics and income levels in the different areas of the ROI. Figure 27 in the FEIS illustrates the percentage of residents born in North Carolina by block group in 2000. As of 2013, the

projected population growth is especially rapid in Dare County, where the projected population growth approaches 50 percent (Office of State Budget and Management 2013).

Environmental Justice

Executive Order (EO) 12898 (The White House 1994) directs that "...each Federal agency shall make achieving environmental justice part of its mission by identifying and addressing, as appropriate, disproportionately high and adverse human health or environmental effects of its programs, policies, and activities on minority populations and low-income populations..."

According to the Environmental Protection Agency (EPA), "Environmental Justice is the fair treatment and meaningful involvement of all people regardless of race, color, national origin, or income with respect to the development, implementation, and enforcement of environmental laws, regulations, and policies." For purposes of assessing environmental justice under NEPA, CEQ defines a minority population as one in which the percentage of minorities exceeds 50% or is substantially higher than the percentage of minorities in the general population or other appropriate unit of geographic analysis (CEQ 1997). In order to have an impact under EO 12898, the impact must be an adverse affect on human health or environment, and the impact must be in a way that has an ostensibly disproportionate impact on minority populations and low-income populations.

Minority Populations

Neither the Hyde County nor the Dare County minority population exceeds 50 percent. The minority population in Hyde County – 39.4 percent – is slightly higher than of the state's 33.4 percent; and is therefore only marginally higher than that of the general population. Minorities represent only 10 percent of the population in Dare County. A summary of minority populations in Hyde and Dare counties are displayed below in Table 2.

Table 2. Summary of Minority Populations, 2010.

Geographic Location	Total Population	Minority Population (Percent)	Black or African American (Percent)	American Indian or Alaska Native (Percent)	Asian (Percent)	Native Hawaiian or Pacific Islander (Percent)	Hispanic (Percent)
Dare County	33,920	3,394 (10.0)	834 (2.5)	125 (0.4)	212 (0.6)	13 (0.0)	2,210 (6.5)
Hyde County	5,810	2,292 (39.4)	1,836 (31.6)	28 (0.5)	16 (0.3)	1 (0.0)	411 (7.1)
North Carolina	9,535,483	3,186,424 (33.4)	2,048,628 (21.5)	122,110 (1.3)	208,962 (2.2)	6,604 (0.1)	800,120 (8.4)

Source: U.S. Census Bureau 2010f-h.

Income Characteristics

Personal income data are measured and reported for the county of the place of residence. Per capita income is the personal income for the county divided by the population resident in the county (USCB 2013).

Median household income is the amount which divides the income distribution into two equal groups: one-half of the cases falling below the median income and one-half above the median. (For households and families, the median income is based on the distribution of the total number of households and families including those with no income. The median income for individuals is based on individuals 15 years old and over with income). Median household income is computed on the basis of a standard distribution in an attempt to take into account all households in a given area (USCB 2013); and it is perhaps the most widely used and accepted measure of income.

According to the U.S. Department of Health and Human Services, the 2009 poverty threshold is defined as a maximum annual income of \$18,310 or less for a family of three (USDHHS 2010). Both the per capita and median household income figures are higher in Dare County when compared to state of North Carolina; and the poverty rate is

lower. Conversely, both the per capita income and median household income is lower in Hyde County when compared to the state; and the poverty rate is higher. 2010 income statistics in Hyde and Dare counties are presented below in Table 3.

Table 3. Income Statistics, 2010.

Geographic Location	Per Capita Income (2010 dollars)	Median Household Income (2010 dollars)	Poverty Rate (2010)
Dare County	\$30,327	\$53,889	10.5%
Hyde County	\$14,992	\$38,265	20.4%
North Carolina	\$24,745	\$45,570	15.5%

Source: U.S. Census Bureau 2010i-k.

Employment Characteristics

The size of a county's labor force is measured as the sum total of those currently employed and those actively seeking employment. The unemployment rate represents the number unemployed as a percent of the labor force. As seen in Table 4, Dare County and the state of North Carolina had the same unemployment rate of 10.8 percent in 2010. The unemployment rate in Hyde County was 2.1 percent lower for the same year (BLS 2010). Figure 30 in the FEIS shows changes in employment by zip code for the period between 2000 and 2007.

Table 4. Employment Characteristics, 2010.

	Dare County	Hyde County	North Carolina
Labor Force	22,111	3,010	4,637,294
Employed	19,733	2,749	4,136,266
Unemployed	2,378	261	501,028
Unemployment Rate	10.8	8.7	10.8

Source: BLS 2010.

Table 39 of the FEIS presents a breakdown of employment by sector for the ROI, state, and nation. Comparable figures are not available on the block group level for 2010, and as such are presented on the county level for 2010 in Table 5 below.

Table 5. Employment by Sector, 2010.

Industry	Dare County		Hyde County	
	No. of Employees	Percentage	No. of Employees	Percentage
Agriculture, forestry, fishing and hunting, and mining	341	1.9	330	16.9
Construction	2,401	13.4	82	4.1
Manufacturing	831	4.6	105	5.3
Wholesale trade	319	1.8	46	2.4
Retail Trade	2,342	13.1	145	7.4
Transportation and warehousing, and utilities	498	2.7	102	5.2
Information	184	1.0	0	0
Finance and insurance, and real estate and rental and leasing	1,850	10.3	41	2.1
Professional, scientific, and management, & administrative & waste management services	1,520	8.4	162	8.2
Educational services, and health care and social assistance	2,382	13.2	464	23.7
Arts, entertainment, and recreation, and accommodation and food services	3,190	17.8	179	9.2
Other services, except public administration	955	5.3	77	3.9
Public administration	1,127	6.3	223	11.4
Total	17,940	100.0	1,956	100.0

Source: U.S. Census Bureau 2010i and 2010j.

As discussed in the FEIS, much of the employment within the ROI caters to tourists visiting the area. In 2010 the arts, entertainment, and recreation, and accommodation and food services; construction, retail trade; finance and insurance, and real estate and rental and leasing sectors accounted for 54.6 percent of total employment in Dare County; and 22.8 percent in Hyde County (USCB 2010i and 2010j). The agriculture, forestry, fishing and hunting, and mining sector account for 16.9 percent of employment in Hyde County.

The importance of small businesses is also discussed in the FEIS. Additionally, in Dare and Hyde counties consist of 5,412 self-employed individuals. Nonemployers are typically self-employed individuals operating very small businesses, which may or may not be the owner's principal source of income. The agriculture, forestry, fishing, and hunting (of which most are commercial fisherman); construction; real estate and rental and leasing; and arts, entertainment, and recreation industries comprise 50.4 percent of all nonemployers in the two counties (Table 6).

Table 6. Nonemployers by Industry, 2010.

Industry	Dare County	Hyde County	Total	Percent
Agriculture, forestry, fishing, and hunting	445	173	618	11.4
Utilities	D	-	-	-
Construction	940	58	998	18.4
Manufacturing	55	5	60	1.1
Wholesale trade	64	7	71	1.3
Retail Trade	287	29	316	20.5
Transportation and warehousing	76	12	88	1.6
Information	41	D	>41	7.6
Finance and insurance	87	D	>87	1.6
Real estate and rental and leasing	834	33	867	16.0
Professional, scientific, and technical services	444	17	461	8.5
Administrative and support and waste management	467	46	513	9.5
Educational services	90	9	99	1.8
Health care and social assistance	161	16	177	3.2
Arts, entertainment, and recreation	228	21	249	4.6
Accommodation and food services	87	12	99	1.8
Other services (except public administration)	539	119	658	12.2
Total for all sectors	4,849	563	5,412	100.0

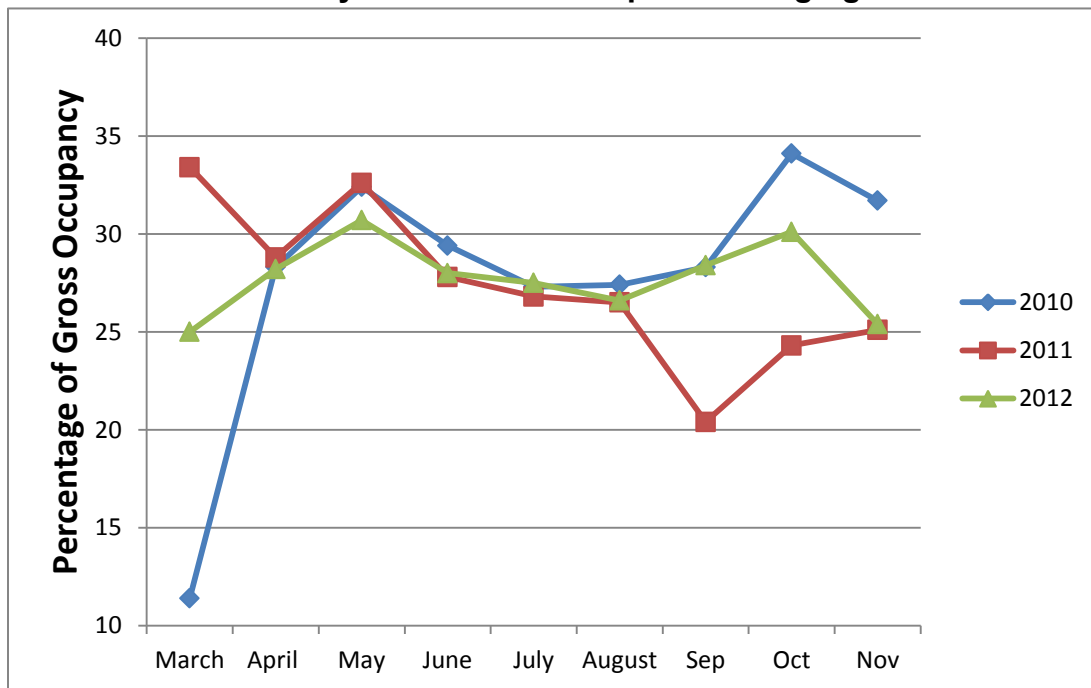
Source: U.S. Census Bureau 2010l and 2010m.

D: Withheld to avoid disclosing data for individual companies; data are included in higher

Regional Distribution of Tax Receipts within Dare County

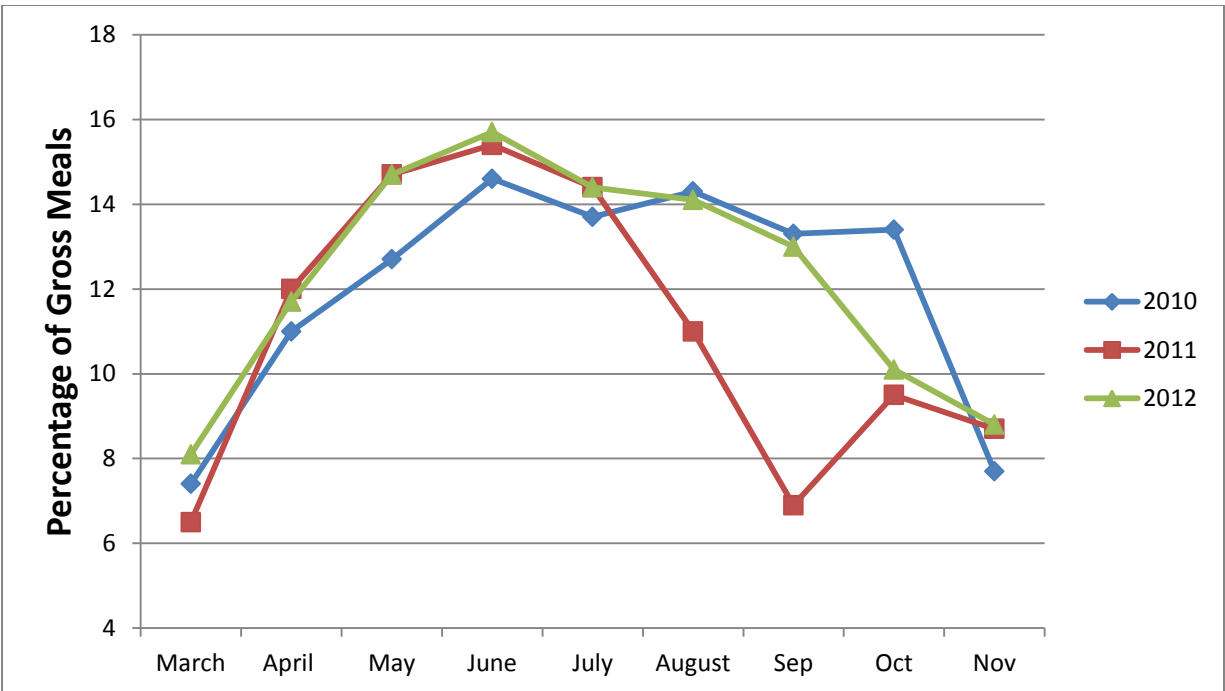
As explained in the FEIS, the Outer Banks Visitors Bureau posts monthly data on gross tax receipts from lodging and meals. The percentage of tax receipts for all of Dare County generated by the Seashore villages – defined as Rodanthe, Waves, Salvo, Avon, Buxton, Frisco, and Hatteras – provide one measure of how the tourism economy compares over time with the whole of Dare County. Figures 31-1 and 31-2 in the FEIS plot the percentage of gross occupancy receipts in Dare County, from March through November between 2006 and 2009. The Seashore villages contributed between 11 and 34 percent of the gross occupancy receipts in Dare County from March through November between 2010 and 2012 (Figure 1-1). 2010 gross meal receipts are also consistent with past years (Figure 1-2) (Outer Banks Visitor Center 2010a and 2010b).

Figure 1-1. Tax Receipts from the Seashore Villages as a Percentage of Dare County’s Total Tax Receipts for Lodging



Source: Outer Banks Visitor Bureau 2010a, 2011b, and 2012b.

Figure 1-2. Tax Receipts from the Seashore Villages as a Percentage of Dare County’s Total Tax Receipts for Meals.



Source: Outer Banks Visitors Bureau 2010b, 2011b, and 2012b.

As discussed in the FEIS, tourism is a large part of the ROI's local economy, especially during the summer months. As estimated by the North Carolina Department of Commerce, travel expenditures in Dare County have increased at almost three times the rate of the state during the period between 2000 and 2010. Travel expenditures in Hyde increased at less than half that of the state's, or 4.5 percent between 2000 and 2010. In 2010, tourism was responsible for 11,260 jobs in Dare County and 390 in Hyde County (North Carolina Department of Commerce 2010).

Table 7. Estimated Domestic Travel Expenditures (in millions), 2000-2010.

Geographic Area	2000	2010	Percent Change, 2000-2010
Dare County	\$624.14	\$834.29	33.7%
Hyde County	\$29.58	\$30.90	4.5%
North Carolina	\$15,089.89	\$17,015.70	12.8%

Source: North Carolina Department of Commerce 2010.

Housing

A housing unit indicates a house, an apartment, a mobile home or trailer, a group of rooms, or a single room occupied as separate living quarters, or if vacant, intended for occupancy as separate living quarters. Housing units categorized as urban occur in a territory with at least 2,500 people but fewer than 50,000. A “rural” classification can be in metropolitan or non-metropolitan areas (USCB 2013).

Table 8. Housing Unit Statistics, 2000 and 2010

	ROI ^a	North Carolina (2000)	ROI ^b	North Carolina (2010)
Total Housing Units	26,891	3,523,944	33,775	4,327,528
Urban	14,578	2,080,729	23,818	2,787,646
<i>Percent of Total</i>	<i>54.2</i>	<i>59.0</i>	<i>70.5</i>	<i>63.8</i>
Occupied	12,588	3,132,013	14,265	3,745,155
Vacant	14,303	391,931	18,384	582,373
For seasonal, recreational, or occasional use	13,771	147,087	14,449	191,508
<i>Percent of Total</i>	<i>51.2</i>	<i>4.17</i>	<i>42.7</i>	<i>4.4</i>

Source: U.S. Census Bureau 2000 and 2010n-p.

In 2010, the ROI had a total of 33,775 housing units, 98.5 percent of which are located in the Dare County block groups. The ROI’s housing is 70.5 percent urban, and 100 percent of the urban housing units occur in the Dare County block groups. Over 40 percent of the total housing units are for seasonal, recreational, or occasional use (USCB 2010n and 2010p). Figure 32 in the FEIS shows the distribution of vacant housing units for seasonal, recreational or occasional use in the year 2000.

See the 2010 FEIS for discussion of:

- Business Survey
- Quality of Life
- Fishing
- Wildlife Watching, and
- Preservation and Nonuse Values.

List of References:

Bureau of Labor Statistics

- 2010 *Labor Force by county, 2010 annual averages.* Accessed May 5 2013:
<http://www.bls.gov/lau/>.

Council on Environmental Quality

- 1997 *Environmental Justice, Guidance under the National Environmental Policy Act.* Accessed March 3, 2011:
<http://ceq.hss.doe.gov/nepa/regs/ej/justice.pdf>.

North Carolina Department of Commerce, Division of Tourism, Film, and Sports Development

- 2010 *The 2010 Economic Impact of Travel on North Carolina Counties.* Accessed May 7, 2013:
http://www.nccommerce.com/LinkClick.aspx?fileticket=-0-w_wzFTX0%3d&tabid=1586&mid=4665.

Office of State Budget and Management, State Demographics Unit

- 2013 *County/State Population Projects.* Accessed April 30, 2013:
http://www.osbm.state.nc.us/ncosbm/facts_and_figures/socioeconomic_data/population_estimates/county_projections.shtm.

Outer Banks Visitors Bureau

- 2010a *Dare County Gross Occupancy by District.* Accessed May 5, 2013:
http://www.outerbanks.org/media/865590/occupancy_by_district_cy_2010-2011.pdf.
- 2010b *Dare County Gross Meals by District.* Accessed May 5, 2013:
http://www.outerbanks.org/media/865593/meals_by_district_cy_2010-2011.pdf.
- 2011a *Dare County Gross Occupancy by District.* Accessed May 5, 2013:
http://www.outerbanks.org/media/865590/occupancy_by_district_cy_2010-2011.pdf.

- 2011b *Dare County Gross Meals by District*. Accessed May 5, 2013:
http://www.outerbanks.org/media/865593/meals_by_district_cy_2010-2011.pdf.
- 2012a *Dare County Gross Occupancy by District*. Accessed May 5, 2013:
http://www.outerbanks.org/media/864094/meals_by_district_cy_2011-2012.pdf.
- 2012b *Dare County Gross Meals by District*. Accessed May 5, 2013:
http://www.outerbanks.org/media/864094/meals_by_district_cy_2011-2012.pdf.

United States Census Bureau, 2010 Census

- 2010a *Profile of General Population and Housing Characteristics: 2010. Dare County, North Carolina*. Accessed January 23, 2013:
http://factfinder2.census.gov/rest/dnldController/deliver?_ts=377133306034.
- 2010b *Profile of General Population and Housing Characteristics: 2010. Hyde County, North Carolina*. Accessed January 23, 2013:
http://factfinder2.census.gov/faces/tableservices/jsf/pages/productview.xhtml?pid=DEC_10_DP_DPDP1&prodType=table.
- 2010c *Profile of General Population and Housing Characteristics: 2010. North Carolina*. Accessed January 23, 2013:
http://factfinder2.census.gov/faces/tableservices/jsf/pages/productview.xhtml?pid=DEC_10_DP_DPDP1&prodType=table.
- 2010d *Total Population (P1) 2010 Census Summary File 1 (All Dare County Block Groups)*. Accessed May 5, 2013:
http://factfinder2.census.gov/faces/tableservices/jsf/pages/productview.xhtml?pid=DEC_10_SF1_P1&prodType=table.
- 2010e *Total Population (P1) – 2010 Census Summary File 1 (Hyde County Block Group 370959201004)*. Accessed May 5, 2013:
<http://factfinder2.census.gov/faces/nav/jsf/pages/searchresults.xhtml?refresh=t>.
- 2010f *Profile of General Population and Housing Characteristics: 2010. Dare County, North Carolina*. Accessed January 23, 2013:

http://factfinder2.census.gov/rest/dnldController/deliver?_ts=377133306034.

- 2010g *Profile of General Population and Housing Characteristics: 2010. Hyde County, North Carolina.* Accessed January 23, 2013:
http://factfinder2.census.gov/faces/tableservices/jsf/pages/productview.xhtml?pid=DEC_10_DP_DPDP1&prodType=table.
- 2010h *Profile of General Population and Housing Characteristics: 2010. North Carolina.* Accessed January 23, 2013 at:
http://factfinder2.census.gov/faces/tableservices/jsf/pages/productview.xhtml?pid=DEC_10_DP_DPDP1&prodType=table.
- 2010i *Selected Economic Characteristics. 2006-2010 American Community Survey 5-Year Estimates: Dare County, North Carolina.* Accessed January 23, 2010:
http://factfinder2.census.gov/rest/dnldController/deliver?_ts=377134145934.
- 2010j *Selected Economic Characteristics. 2006-2010 American Community Survey 5-Year Estimates: Hyde County, North Carolina.* Accessed January 23, 2010:
http://factfinder2.census.gov/rest/dnldController/deliver?_ts=377134145934.
- 2010k *Selected Economic Characteristics. 2006-2010 American Community Survey 5-Year Estimates: North Carolina.* Accessed January 23, 2010:
http://factfinder2.census.gov/rest/dnldController/deliver?_ts=377134145934.
- 2010l *Geography Area Series: Nonemployer Statistics by Legal Form of Organization: 2010. Dare County, NC.* Accessed May 6, 2013:
http://factfinder2.census.gov/faces/tableservices/jsf/pages/productview.xhtml?pid=NES_2010_00A2&prodType=table.
- 2010m *Geography Area Series: Nonemployer Statistics by Legal Form of Organization: 2010. Hyde County, NC.* Accessed May 6, 2013:
http://factfinder2.census.gov/faces/tableservices/jsf/pages/productview.xhtml?pid=NES_2010_00A2&prodType=table.
- 2010n *Housing Units (H2) 2010 Census Summary File 1 (All Dare County Block Groups).* Accessed May 8, 2013:

<http://factfinder2.census.gov/faces/nav/jsf/pages/searchresults.xhtml?refresht>.

2010o *Housing Units (H2) 2010 Census Summary File 1 (Hyde County Block Group 370959201004)*. Accessed May 8, 2013:

2010p *Housing Units (H2) 2010 Census Summary File 1 (North Carolina)*. Accessed May 8, 2013:

<http://factfinder2.census.gov/faces/nav/jsf/pages/searchresults.xhtml?refresht>.

United States Census Bureau, American Fact Finder

2013 *Glossary Terms*. Accessed May 8, 2013:

http://factfinder2.census.gov/help/en/american_factfinder_help.htm#glossary/glossary.htm.

United States Department of Health and Human Services

2010 *The 2009 HHS Poverty Guidelines*. Accessed April 14, 2011 at:

<http://aspe.hhs.gov/poverty/09poverty.shtml>.