

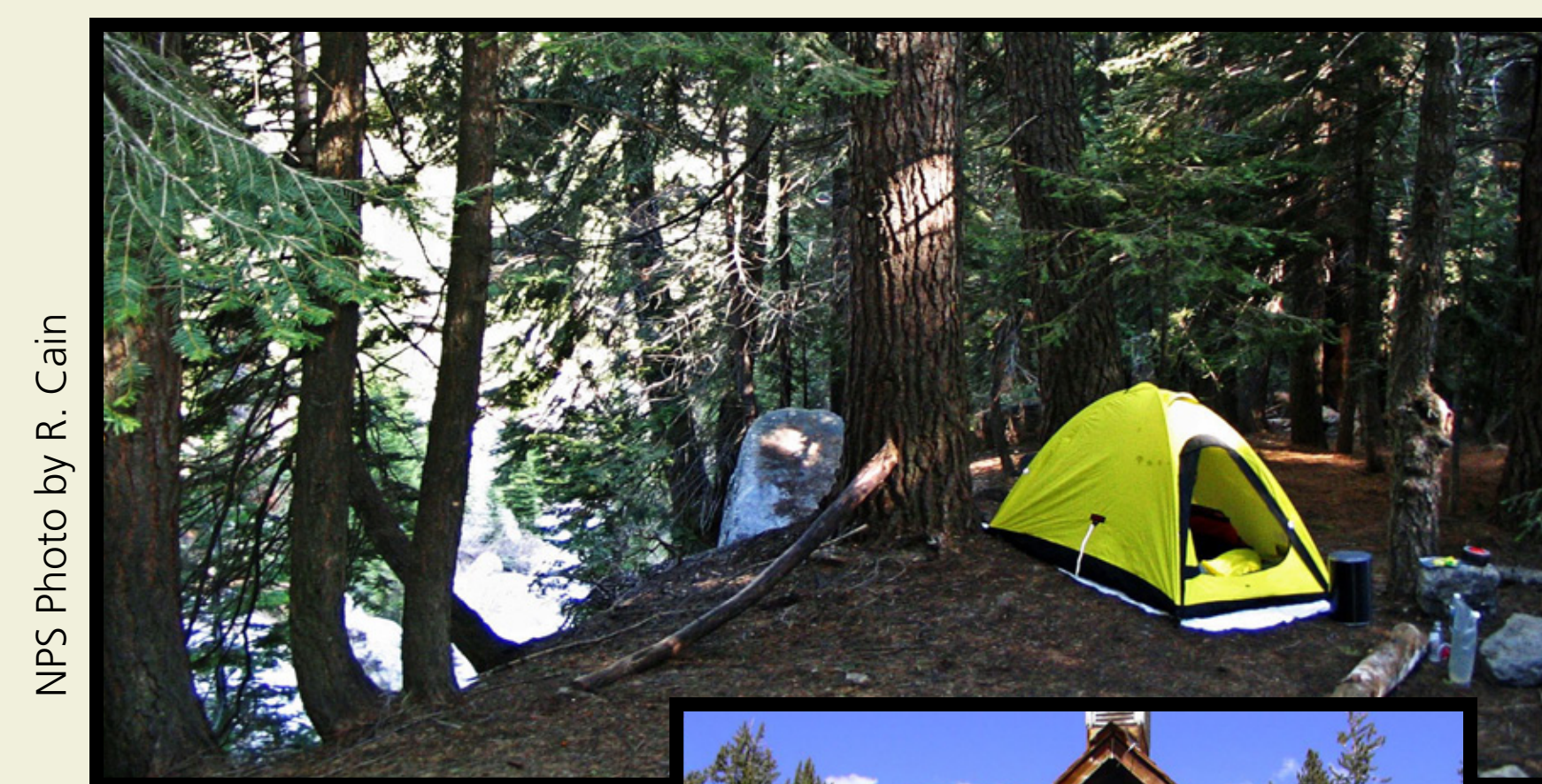


Potential Issues

Park managers and planners identified opportunities and issues regarding the wilderness of Sequoia and Kings Canyon National Parks. These are preliminary ideas – please share your thoughts:

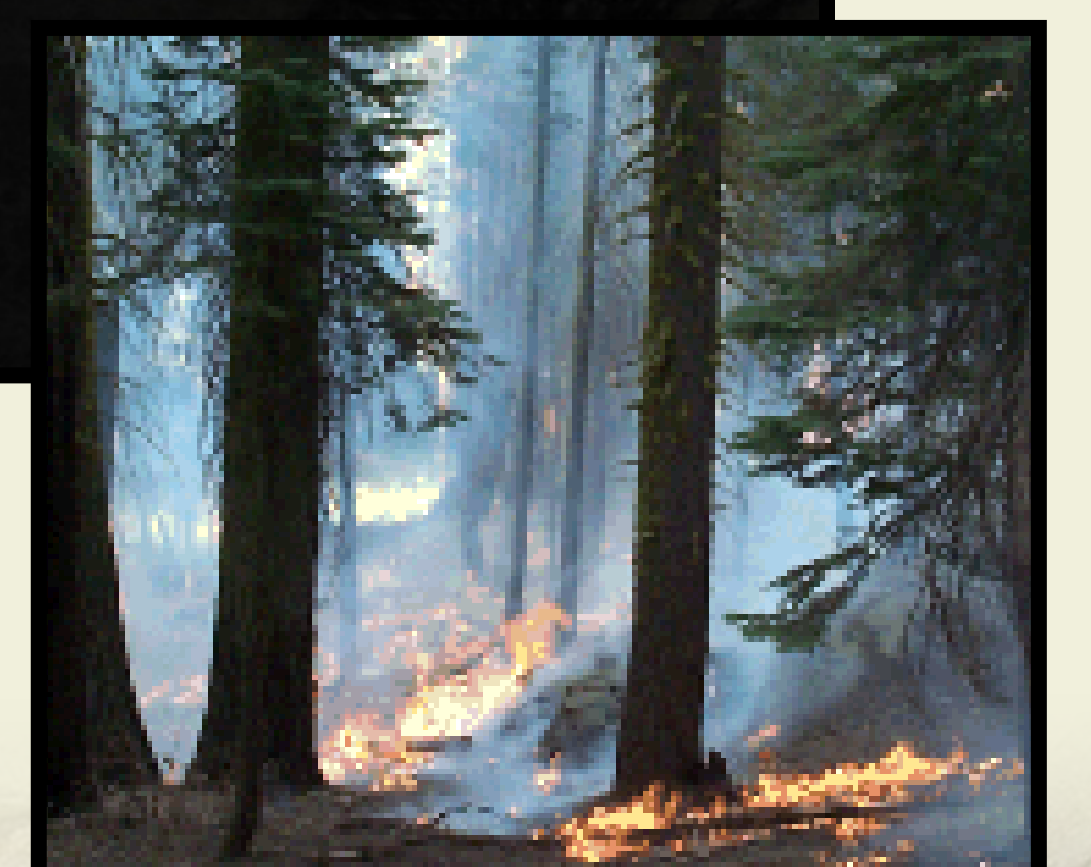
Recreation/Visitor Experience

- Use levels / party size / quotas / types of use
- Campfires
- Food storage
- Campsites
- Commercial services / extent necessary
- Human waste
- Stock use
- Linkage to front country activities and facilities
- Wilderness fees
- Ranger presences and contact



Park Administration

- Trail management and maintenance
- Facilities / Ranger stations
- Signs
- Minimum requirements / minimum tool (administrative, resource, and research)
- Zoning
- Communication systems



Education



Resource Protection and Management

- Research and monitoring
- Fire management
- Water quality
- Endangered species
- Cultural resource
- Soundscapes and dark skies
- Non-native species
- External threats and influences (climate change, air quality, etc.)

