

APPENDIX G: SCOPING MATERIALS

This page intentionally left blank.

**PUBLIC, AGENCY, AND TRIBAL
SCOPING INITIATION**

This page intentionally left blank.



United States Department of the Interior

NATIONAL PARK SERVICE
Sequoia and Kings Canyon National Parks
47050 Generals Highway
Three Rivers, California 93271-9651
(559) 565-3341



IN REPLY REFER TO:
L7617

March 22, 2011

Gabe Horta
Big Sandy Rancheria of Mono Indians
P.O. Box 337
Auberry, California 93602

Dear Mr. Horta:

We are initiating the Wilderness Stewardship Plan and Environmental Impact Statement (WSP/EIS) for Sequoia and Kings Canyon National Parks, and would like your input on this important effort. We would like to invite you to a presentation on this planning effort at the Sierra National Forest Headquarters, 1600 Tollhouse Road, in Clovis, California on April 26, 2011, from 9 am until 11 am. This meeting will provide an opportunity for your input on issues and concerns related to current and future wilderness management in Sequoia and Kings Canyon National Parks. We are also inviting area agencies and other area tribes to participate in this meeting.

For your information, we will be conducting a public scoping meeting in Fresno on April 25 at 7 pm at Fresno Pacific University, 1717 South Chestnut Avenue, in the Marpeck Center room 102, and in Visalia on April 29, at 6 pm in the Tulare County Office of Education on 2637 West Burrell. You are welcome to attend one or both of those meetings.

We are available for government-to-government consultation with your Tribe if you wish to discuss your questions and concerns about the Wilderness Stewardship Plan separately from the aforementioned meetings. If you would like a separate meeting, please contact Wilderness Coordinator Gregg Fauth at (559) 565-3137 or by Email at gregg_fauth@nps.gov.

We are in the initial stage of this planning process, also called the "scoping" phase, and foresee providing you with additional opportunities for input as we develop the plan and alternatives and prepare a draft environmental impact statement. However, as we begin our planning process, it is important to understand Tribal concerns early so these can be reflected in the plan.

If you would like to submit written comments during this scoping phase related to wilderness management in Sequoia and Kings Canyon National Parks, we would appreciate receipt of your comments by June 30, 2011. We look forward to working with you on this and other future planning efforts.

Sincerely,

Karen F. Taylor-Goodrich
Superintendent

Identical letter sent to 25 area tribes, tribal organizations, or tribal representatives.



National Park Service
U.S. Department of the Interior

Sequoia and Kings Canyon
National Parks

47050 Generals Hwy.
Three Rivers, CA 93271

559 565-3341 phone
559 565-3730 fax

Sequoia and Kings Canyon National Parks News Release

For Immediate Release: March 29, 2011

Contact: Dana M. Dierkes or Malinee Crapsey

Phone Number: (559) 679-2866 or 559-565-3131

National Park Service Seeks Public Input in Development of Wilderness Stewardship Plan for Sequoia and Kings Canyon National Parks

Sequoia and Kings Canyon National Parks, CA – Starting on April 11, the National Park Service will be seeking your input in development of a Wilderness Stewardship Plan and Environmental Impact Statement (WSP/EIS) for Sequoia and Kings Canyon National Parks in Tulare and Kings counties in California. The National Park Service is interested in your concerns about existing and future wilderness use and management at Sequoia and Kings Canyon National Parks. Potential issues which may be addressed in the plan include: day and overnight use; wilderness permitting; use of campfires; wildlife and proper food storage; party sizes; camping and campsites; human waste management; stock use; meadow management; research activities; wildlife management in wilderness; cultural resources in wilderness; maintenance of trails, bridges, or other necessary infrastructure; the extent to which commercial services are necessary to fulfill the recreational and other purposes of wilderness areas, etc. The majority of Sequoia and Kings Canyon National Parks, over 96% of the land or approximately 835,000 acres, is managed as wilderness, including the Sequoia-Kings Canyon and John Krebs wilderness areas.

- more -

To learn more about the process and how to comment, visit <http://parkplanning.nps.gov/sekiwild> and/or consider attending an upcoming workshop during the last week of April to listen to a presentation by the National Park Service and to meet with staff in an informal open house setting and discuss issues of interest or submit your comments. The schedule for the meetings is:

Monday, April 25, 2011
7:00-9:00 p.m.
Fresno Pacific University
Marpeck Center, Room 102
1717 South Chestnut Avenue
Fresno, CA 93727

Thursday, April 28, 2011
7:00-9:00 p.m.
L.A. River Center
California Building Atrium
570 West Avenue Twenty-Six
Los Angeles, CA 90065

Tuesday, April 26, 2011
7:00-9:00 p.m.
East Bay Regional Parks
Richard C. Trudeau Training Center,
Conf. Room 2
11500 Skyline Blvd
Oakland, CA 94619

Friday, April 29, 2011
6:00 – 8:00 p.m.
Tulare County Office of Education
“The Pit”
2637 West Burrel Ave.
Visalia, CA 93291

- more -

Wednesday, April 27, 2011
7:00-9:00 p.m.
Inyo National Forest Headquarters
Conference Room
351 Pacu Lane
Bishop, CA 93514

[REDACTED]

All written comments must be transmitted, postmarked, or hand-delivered within 90 days of the date the “Notice of Intent,” the official announcement of this public comment period, is published in the *Federal Register*. To respond electronically, you may submit your comments online to the National Park Service Planning, Environment and Public Comment (PEPC) website at <http://parkplanning.nps.gov/sekiwild>. To submit written comments by letter you may send them by U.S. Postal Service or other mail delivery service or hand-deliver your comments to Superintendent Karen F. Taylor-Goodrich, Sequoia and Kings Canyon National Parks, Attn: Wilderness Stewardship Plan, 47050 Generals Highway, Three Rivers, CA 93271. Faxed comments will be accepted at (559) 565-4202. Written comments will also be accepted during public scoping meetings. Comments in any format (written or electronic) submitted by an individual or organization on behalf of another individual or organization will not be accepted. Anonymous comments will not be accepted.

It is the practice of the National Park Service to make all comments available for public review, after the close of the EIS process. Before including your address, phone number, e-mail address, or other personal identifying information in your comment, you should be aware that your entire comment - including your personal identifying information - may be made publicly available at any time. While you can ask us in your comment to withhold your personal identifying information from public review, we cannot guarantee that we will be able to do so.

For more information about Sequoia and Kings Canyon National Parks, visit www.nps.gov/seki.

–NPS–

Note to News Media: Over 20 million people live within a 250-mile drive of Sequoia and Kings Canyon National Parks.

EXPERIENCE YOUR AMERICA

The National Park Service cares for special places saved by the American people so that all may experience our heritage.



United States Department of the Interior

NATIONAL PARK SERVICE
Sequoia and Kings Canyon National Parks
47050 Generals Highway
Three Rivers, California 93271-9651
(559) 565-3341



IN REPLY REFER TO:
L7617 (SEKI)

March 30, 2011

Dear Interested Party:

You are invited to participate in an important planning process for Sequoia and Kings Canyon National Parks. We are resuming our Wilderness Stewardship Plan and Environmental Impact Statement (WSP/EIS) this spring and beginning our public scoping process. Wilderness is an important resource, with more than 808,000 acres of designated wilderness within these two parks, including the Sequoia-Kings Canyon Wilderness and John Krebs Wilderness. Including our proposed and potential wilderness additions, we manage more than 96% of our total acreage as wilderness.

We are very interested in your concerns and issues related to wilderness management and preservation at Sequoia and Kings Canyon National Parks. We will be initiating our first public comment period, also called "scoping" for the plan on April 11, 2011. A "Notice of Intent" (NOI) to prepare the WSP/EIS is expected to be published in the Federal Register in April. The public scoping period will end 90 days after the NOI is published.

We have several meetings scheduled to provide more information on the project (see page 2). If you are unable to attend the meetings, information on the proposed project is available online at the National Park Service Planning, Environment and Public Comment (PEPC) website at <http://parkplanning.nps.gov/sekiwild>.


Public comments may be submitted several ways. You may input your comments on the PEPC website (above), or you may direct comments regarding this project to the park by mail, hand delivery, or fax to:

Superintendent
Sequoia and Kings Canyon National Parks
Attn: Wilderness Stewardship Plan
47050 Generals Highway
Three Rivers, CA 93271
Fax: 559-565-4202

If you need assistance using our PEPC website, please contact Environmental Protection Specialist Nancy Hendricks at (559) 565-3102 and she will assist you.

Before including your address, phone number, e-mail address, or other personal identifying information in your comment, you should be aware that your entire comment – including your personal identifying information – may be made publicly available at any time. While you can ask us in your comment to withhold your personal identifying information from public review, we cannot guarantee that we will be able to do so. We will always make submissions from organizations or businesses, and from individuals identifying themselves as representatives of or officials of organizations or businesses, available for public inspection in their entirety. Anonymous comments will not be accepted.

Thank you for your interest in the wilderness of Sequoia and Kings Canyon National Parks and we hope to see you at one of our public meetings.


for Karen F. Taylor-Goodrich
Superintendent

Wilderness Stewardship Plan Scoping Meetings/Open Houses

Monday, April 25, 2011
7:00 – 9:00 p.m.
Fresno Pacific University
Marpeck Center, Room 102
1717 South Chestnut Avenue
Fresno, California, 93727

Wednesday, April 27, 2011
7:00 – 9:00 p.m.
Inyo National Forest HQ
Conference Room
351 Pacu Lane
Bishop, California, 93514

Tuesday, April 26, 2011
7:00 – 9:00 p.m.
East Bay Regional Parks
Richard C. Trudeau
Training Center, Conf. Room 2
11500 Skyline Boulevard
Oakland, California, 94619

Thursday, April 28, 2011
7:00 – 9:00 p.m.
L.A. River Center
California Building Atrium
570 West Avenue Twenty-Six
Los Angeles, California, 90065

Friday, April 29, 2011
6:00 – 8:00 p.m.
Tulare County Office of Education
“The Pit”
2637 West Burrel Avenue
Visalia, California, 93291



National Park Service
U.S. Department of the Interior

Sequoia and Kings Canyon
National Parks

47050 Generals Hwy.
Three Rivers, CA 93271

559 565-3341 phone
559 565-3730 fax

Sequoia and Kings Canyon National Parks News Release

For Immediate Release: April 20, 2011

Contact: Dana M. Dierkes

Phone Number: (559) 679-2866

Public Meetings Scheduled in Various Cities and Towns from April 25-29 **to Obtain Feedback in Development of** **Wilderness Stewardship Plan and Environmental Impact Statement**

Sequoia and Kings Canyon National Parks, CA—Join the National Park Service at various upcoming meetings throughout central and southern California to provide your input in development of a Wilderness Stewardship Plan and Environmental Impact Statement (WSP/EIS) to guide existing and future wilderness use and management at Sequoia and Kings Canyon National Parks. Listen to a presentation by National Park Service staff. Then, meet with staff afterwards in an informal open house setting to discuss issues of interest or submit your comments. The meeting schedule is:

Monday, April 25, 2011
7:00-9:00 p.m.
Fresno Pacific University
Marpeck Center, Room 102
1717 South Chestnut Avenue
Fresno, CA 93727

Tuesday, April 26, 2011
7:00-9:00 p.m.
East Bay Regional Parks
Richard C. Trudeau Trng. Ctr., Conf. Room 2
11500 Skyline Blvd
Oakland, CA 94619

Wednesday, April 27, 2011
7:00-9:00 p.m.
Inyo National Forest Headquarters
Conference Room
351 Pacu Lane
Bishop, CA 93514

Thursday, April 28, 2011
7:00-9:00 p.m.
L.A. River Center
California Building Atrium
570 West Avenue Twenty-Six
Los Angeles, CA 90065

- more -

Friday, April 29, 2011
6:00 – 8:00 p.m.
Tulare County Office of Education
“The Pit”
2637 West Burrel Ave.
Visalia, CA 93291

All written comments must be transmitted, postmarked, or hand-delivered within 90 days of the date the “Notice of Intent” is published in the *Federal Register*. (The Notice of Intent, the official announcement of this public comment period, is expected to be published shortly.) To respond electronically, submit your comments via the National Park Service Planning, Environment and Public Comment (PEPC) website at <http://parkplanning.nps.gov/sekiwild>. To submit written comments by letter, you may send them by U.S. Postal Service or other mail delivery service or hand-deliver your comments to Superintendent Karen F. Taylor-Goodrich, Sequoia and Kings Canyon National Parks, Attn: Wilderness Stewardship Plan, 47050 Generals Highway, Three Rivers, CA 93271. Faxed comments will be accepted at (559) 565-4202. Written comments will be accepted during public scoping meetings. Comments in any format (written or electronic) submitted by an individual or organization on behalf of another individual or organization will not be accepted. Anonymous comments will not be accepted.

It is the practice of the National Park Service to make all comments available for public review after the close of the EIS process. Before including your address, phone number, e-mail address, or other personal identifying information in your comment, you should be aware that your entire comment - including your personal identifying information - may be made publicly available at any time. While you can ask us in your comment to withhold your personal identifying information from public review, we cannot guarantee that we will be able to do so.

For more information about Sequoia and Kings Canyon National Parks, visit www.nps.gov/seki.

–NPS–

Fascinating Facts:

- (1) Over 96% of the land at Sequoia and Kings Canyon National Parks is managed as wilderness.
- (2) Over 20 million people live within a 250-mile drive of Sequoia and Kings Canyon National Parks.



United States Department of the Interior

NATIONAL PARK SERVICE
Sequoia and Kings Canyon National Parks
47050 Generals Highway
Three Rivers, California 93271-9651
(559) 565-3341



IN REPLY REFER TO:
L7617

May 16, 2011

Ed Armenta
Forest Supervisor
Inyo National Forest
351 Pacu Lane, Suite 200
Bishop, California 93514

Dear Ed:

Thank you for your support at our April 27 and 28 public and agency scoping meetings at your headquarters in Bishop. It was great to meet you and your staff and discuss wilderness stewardship, particularly cross boundary issues that are important to both our agencies. We'd like to thank your staff, particularly Nancy Upham, for helping us coordinate our meetings and for sending our meeting notification to her contact list.

Based on our discussions at those meetings, we believe that it would benefit both our agencies to work together through this 3 to 4-year planning process. Therefore, we are requesting that Inyo National Forest participate as a cooperating agency in our Wilderness Stewardship Plan/ Environmental Impact Statement. We hope that as a cooperating agency, you would designate a primary point of contact for Inyo National Forest who would be the liaison with our wilderness planning staff. We expect that there would be periodic meetings with your staff to provide updates on the planning effort and opportunities for input. Work may include providing us with information about potential issues and ideas for how we can effectively work together on cross boundary management issues; assisting in developing and reviewing alternatives; and providing information and data that would allow us to better assess environmental consequences and cumulative effects. As a cooperating agency, you would be able to review preliminary draft text and provide feedback.

Please let us know if you would be interested in cooperating agency status. If you need further information, our primary contacts for the project are Wilderness Coordinator Gregg Fauth at (559) 565-3137 and Environmental Protection Specialist Nancy Hendricks at (559) 565-3102.

We look forward to working with you on this and other future planning efforts.

Sincerely,

A handwritten signature in black ink, reading "Karen Taylor-Goodrich".

Karen F. Taylor-Goodrich
Superintendent



United States Department of the Interior

NATIONAL PARK SERVICE
Sequoia and Kings Canyon National Parks
47050 Generals Highway
Three Rivers, California 93271-9651
(559) 565-3341



IN REPLY REFER TO:
L7617

May 16, 2011

Deb Whitman
Acting Forest Supervisor
Sequoia National Forest
1839 South Newcomb St
Porterville, California 93257

Dear Deb:

We have initiated public, agency, and tribal scoping for the Sequoia and Kings Canyon National Parks Wilderness Stewardship Plan and Environmental Impact Statement. We'd like to thank Marianna Emmendorfer and Miguel Macias for participating in our agency scoping meeting at the Sierra National Forest office on April 26.

Based on our discussions at our April 26 meeting, we believe that it would benefit both our agencies to work together through this 3 to 4-year planning process. Therefore, we are requesting that Sequoia National Forest participate as a cooperating agency in our Wilderness Stewardship Plan/ Environmental Impact Statement. We hope that as a cooperating agency, you would designate a primary point of contact for Sequoia National Forest who would be the liaison with our wilderness planning staff. We expect that there would be periodic meetings with your staff to provide updates on the planning effort and opportunities for input. Work may include providing us with information about potential issues and ideas for how we can effectively work together on cross boundary management issues; assisting in developing and reviewing alternatives; and providing information and data that would allow us to better assess environmental consequences and cumulative effects. As a cooperating agency, you would be able to review preliminary draft text and provide feedback.

Please let us know if you would be interested in cooperating agency status. If you need further information, or if you would like to schedule a meeting to discuss this further, our primary contacts for the project are Wilderness Coordinator Gregg Fauth at (559) 565-3137 and Environmental Protection Specialist Nancy Hendricks at (559) 565-3102.

We look forward to working with you on this and other future planning efforts.

Sincerely,

A handwritten signature in black ink, appearing to read "Karen F. Taylor-Goodrich".

Karen F. Taylor-Goodrich
Superintendent



United States Department of the Interior

NATIONAL PARK SERVICE
Sequoia and Kings Canyon National Parks
47050 Generals Highway
Three Rivers, California 93271-9651
(559) 565-3341



IN REPLY REFER TO:
L7617

May 16, 2011

Scott Armentrout
Forest Supervisor
Sierra National Forest
1600 Tollhouse Road
Clovis, California 93611

Dear Scott:

As you know, we have initiated public, agency, and tribal scoping for the Sequoia and Kings Canyon National Parks Wilderness Stewardship Plan and Environmental Impact Statement. Thank you for allowing us to host our agency scoping meeting at your Clovis office on April 26. We appreciate your staff's assistance in coordinating this meeting for us, particularly Susan Burkindine for her efforts. We also would like to especially thank Dirk Charley for including us in the Tribal Forum meeting to help us engage tribes in our Wilderness planning process.

Based on our discussions at our April 26 meeting, we believe that it would benefit both our agencies to work together through this 3 to 4-year planning process. Therefore, we are requesting that Sierra National Forest participate as a cooperating agency in our Wilderness Stewardship Plan/ Environmental Impact Statement. We hope that as a cooperating agency, you would designate a primary point of contact for Sierra National Forest who would be the liaison with our wilderness planning staff. We expect that there would be periodic meetings with your staff to provide updates on the planning effort and opportunities for input. Work may include providing us with information about potential issues and ideas for how we can effectively work together on cross boundary management issues; assisting in developing and reviewing alternatives; and providing information and data that would allow us to better assess environmental consequences and cumulative effects. As a cooperating agency, you would be able to review preliminary draft text and provide feedback.

Please let us know if you would be interested in cooperating agency status. If you need further information, our primary contacts for the project are Wilderness Coordinator Gregg Fauth at (559) 565-3137 and Environmental Protection Specialist Nancy Hendricks at (559) 565-3102.

We look forward to working with you on this and other future planning efforts.

Sincerely,

Karen F. Taylor-Goodrich
Superintendent

Sequoia and Kings Canyon National Parks

National Park Service
U.S. Department of the Interior



Wilderness Stewardship Plan Update - October 27, 2011

Comments for Wilderness Stewardship Plan Now Available for Public Review

Nearly 900 comment letters were received during the public scoping period for the Sequoia and Kings Canyon National Parks' (SEKI) Wilderness Stewardship Plan and Environmental Impact Statement (WSP). The scoping period occurred from April 11 to August 31, 2011 and included five public meetings held in northern, central, and southern California.

"This tremendous response demonstrates the public's care and passion about protecting our nation's special wild places, specifically the 830,000 acres of lands managed as wilderness in Sequoia and Kings Canyon National Parks" stated Superintendent Karen Taylor-Goodrich.

All the comment letters are available for the public to read on the National Park Service's Planning, Environment and Public Comment (PEPC) website. They can be accessed at: <http://parkplanning.nps.gov/sekiwild> (Click on "Document List"). Personal identifying information of unaffiliated individuals has been excluded from comment letters; names of persons representing interest groups, agencies, and businesses are included.

All the comment letters have been included in one large "pdf" file that is searchable by word or phrase. All comment letters were entered as received and they have not been edited or changed in any way. We cannot verify that the comments are accurate as to fact. If you need help finding your individual comment letter in the document, or if you would like a CD version of the document, please contact the Sequoia and Kings Canyon National Parks Environmental Compliance Office at 559-565-3102.

Comments were received on an extremely wide variety of wilderness topics and issues, and expressed a wide variety of opinions. While the majority of commenters were California residents (83%), we also received comments from 41 other states and 3 other countries.

Numerous commenters were concerned about issues that have been under discussion for years while others brought forward new wilderness management considerations and ideas, such as requesting increased restrictions on types of equipment that can be brought into wilderness. Some examples of issues presented during public scoping include:

- Opinions on how wilderness should be experienced, recommending "appropriate" and "inappropriate" activities, equipment, and material items, including:
 - Campfires
 - Group sizes
 - Food storage lockers and portable bear-resistant food storage canisters
 - Camp equipment (e.g. chairs and ice chests)
 - Electronic devices (e.g. GPS units and cell phones)
 - Trails and bridges
 - Administrative use of helicopters

EXPERIENCE YOUR AMERICA™

- Support for or concern about stock use in wilderness.
- Support for or suggested changes in current management practices (e.g. regulations, permitting, and quotas).
- Support for or suggested changes in the conduct of commercial services (e.g. hiking, climbing, and stock trips provided by private guides and outfitters). This relates to the "extent necessary" clause of the Wilderness Act.
- Views on what wilderness means to the commenter.
- Suggestions to afford more protection to the natural environment.

Currently we are studying the comments to determine the scope and the significant issues to be analyzed in depth in the Wilderness Stewardship Plan and Environmental Impact Statement. Note that the process of commenting and providing input should not be viewed as a voting process, that is, if a particular outcome is popular among a majority of those who comment, this does not necessarily mean that it will be the final outcome. The National Park Service will make management decisions based on the mandates of relevant legislation and scientific integrity.

The tentative schedule for the Wilderness Stewardship Plan is as follows:

- Fall 2011 - Spring 2012 – Analyze Public Scoping Comments
- Spring-Summer 2012 – Alternatives Development
- Fall 2012 – Release Draft Alternatives for Public Review
- Winter 2012-Fall 2013 – Prepare Draft WSP/Environmental Impact Statement (EIS)
- Fall 2013-Winter 2014 – Public Review of Draft WSP/EIS
- Summer 2014 – Release of the Final WSP/EIS
- Fall 2014 – Record of Decision by Pacific West Regional Director

All commenters who supplied either Email or physical mailing address are included on the parks' mailing list for this project. Anyone who wishes to be included on the mailing list for this project should supply their name and either an Email or physical mailing address to: SEKI_Planning@nps.gov. Please include the following on the subject line: *WSP Mailing List*.

Additional information:

Congressionally Designated Wilderness is to be:

- lands "... designated for preservation and protection in their natural condition. . ."
- lands "... administered for the use and enjoyment of the American people in such manner as will leave them unimpaired for future use and enjoyment as wilderness, and so as to provide for the protection of these areas, the preservation of their wilderness character. . ."
- land "... where the earth and its community of life are untrammelled by man." And to be land that retains its "... primeval character and influence ... which is protected and managed so as to preserve its natural conditions . . ."
- land that appears "... affected primarily by the forces of nature, with the imprint of man substantially unnoticeable. . ." and "... has outstanding opportunities for solitude or a primitive and unconfined type of recreation. . ."
- land that "may also contain ecological, geological, or other features of scientific, educational , scenic, or historical value." And is "... devoted to the public purposes of recreational, scenic, scientific, educational, conservation, and historical use."

From: The Wilderness Act, Public Law 88-577, passed September 3, 1964.

Sequoia-Kings Canyon Wilderness:

- Designated by 1984 California Wilderness Act	=	723,036 acres
- Designated by 2009 Omnibus Public Land Management Act	=	45,186* acres
John Krebs Wilderness (from 2009 OPLMA)	=	<u>39,740* acres</u>
Total designated wilderness acres *(93.3% of park lands)	=	807,962 acres
Proposed Wilderness – managed as wilderness per NPS policies	=	<u>~30,000 acres</u>
Total designated or managed as wilderness (96.8% of park lands)	=	~837,962 acres

(Note: * denotes preliminary number of acres which may be slightly altered upon establishment of final wilderness boundaries)

For further reference on National Park and Wilderness Legislation and Policies, see:

- Act establishing Sequoia National Park, September 25, 1890 (and following acts)
- Act establishing Kings Canyon National Park, March 4, 1940 (and following acts)
- The National Park Service “Organic” Act, August 25, 1916
- The Wilderness Act, Public Law 88-577, September 3, 1964.
- The California Wilderness Act, Public Law 98-425, Sept. 28, 1984
- The Omnibus Public Land Management Act of 2009, Public Law 111-11, March 30, 2009
- National Park Service, Management Policies, 2006 – Chapter 6, Wilderness Preservation and Management

Note: These and other pertinent documents are posted for your review on the PEPC site at:

<http://parkplanning.nps.gov/sekiwild> Click on “Document List.”

Sequoia and Kings Canyon National Parks
47050 Generals Highway
Three Rivers, CA 93271

Wilderness Plan Update

This page intentionally left blank.

ALTERNATIVES DEVELOPMENT

This page intentionally left blank.



National Park Service
U.S. Department of the Interior

Sequoia and Kings Canyon
National Parks

47050 Generals Hwy.
Three Rivers, CA 93271

559 565-3341 phone
559 565-3730 fax

Sequoia and Kings Canyon National Parks News Release

For Immediate Release: July 16, 2012

Contact: Dana Dierkes

Phone Number: (559) 565-3131 or (559) 679-2866 (cell)

National Park Service Will Seek Public Input in Development of Wilderness Stewardship Plan Alternatives for Sequoia and Kings Canyon National Parks Starting in October 2012

Sequoia and Kings Canyon National Parks, CA – Starting in early October, the National Park Service will be seeking public input on the preliminary draft alternatives for the Wilderness Stewardship Plan for Sequoia and Kings Canyon National Parks in Tulare and Kings counties, California. The National Park Service is interested in your ideas and feedback about alternatives to address future wilderness management at Sequoia and Kings Canyon National Parks. Topics which may be addressed in the plan include: day and overnight use; permitting and quotas; party sizes; campfires; food storage; camping and campsites; human waste management; pack stock and grazing management; scientific research; natural and cultural resource management; maintenance of signs, trails, bridges, and other recreational infrastructure; administrative infrastructure; education and outreach; the extent to which commercial services are necessary to fulfill the recreational and other purposes of wilderness areas; and front-country support facilities. Many of these topics were brought forward during the public scoping phase of the planning process, which occurred from April 11 to August 31, 2011.

To learn more about the process and how to comment, visit the National Park Service Planning, Environment, and Public Comment website (PEPC) at <http://parkplanning.nps.gov/sekiwild> and/or consider attending an upcoming workshop during the last two weeks of October to listen to a presentation by the National Park Service and meet with staff to discuss your ideas about alternatives or submit your comments. The schedule for the meetings is:

– continued on page 2 –

EXPERIENCE YOUR AMERICA

The National Park Service cares for special places saved by the American people so that all may experience our heritage.

– continued from page 1 –

Thursday, October 25, 2012

7:00 - 9:00 p.m.

Eastern Sierra Tri-county Fairgrounds

Patio Building

Sierra Street and Fair Street

Bishop, CA 93514

Friday, October 26, 2012

7:00 - 9:00 p.m.

Los Angeles River Center

California Building Atrium

570 West Avenue 26

Los Angeles, CA 90065

Monday, October 29, 2012

7:00 - 9:00 p.m.

East Bay Regional Parks

Redwood Regional Park

Richard C. Trudeau Training Center

Main Conference Room

11500 Skyline Blvd

Oakland, CA 94619

Tuesday, October 30, 2012

6:00 - 8:00 p.m.

Visalia Marriott Hotel

Main Ballroom

300 South Court Street

Visalia, CA 93291

– continued on page 3 –

EXPERIENCE YOUR AMERICA

The National Park Service cares for special places saved by the American people so that all may experience our heritage.

– continued from page 2 –

In order to ensure that your comments are considered, you may use either of two methods to comment during the alternative review process. If you wish to comment electronically, you may submit your comments online to the PEPC website by visiting <http://parkplanning.nps.gov/sekiwild>, clicking on “Open for Comment,” and then clicking on the link to the document. The National Park Service encourages commenting electronically through PEPC, but if you wish to submit your written comments in hard copy (e.g., in a letter), you may send them by U.S. Postal Service or other mail delivery service, or hand-deliver your comments to Superintendent Karen F. Taylor-Goodrich, Sequoia and Kings Canyon National Parks, Attn: Wilderness Stewardship Plan, 47050 Generals Highway, Three Rivers, CA 93271. Faxed comments will be accepted at (559) 565-4202. Written comments will also be accepted during public workshops. Comments in any format (written or electronic) submitted by an individual or organization on behalf of another individual or organization will not be accepted. Anonymous comments will not be accepted.

It is the practice of the National Park Service to make all comments available for public review. Before including your address, phone number, e-mail address, or other personal identifying information in your comment, you should be aware that your entire comment - including your personal identifying information - may be made publicly available at any time. While you can ask us in your comment to withhold your personal identifying information from public review, we cannot guarantee that we will be able to do so.

For more information about Sequoia and Kings Canyon National Parks, visit www.nps.gov/seki.

–NPS–

SEQUOIA AND KINGS CANYON NATIONAL PARKS

Sequoia and Kings Canyon National Parks, which lie side-by-side in the southern Sierra Nevada in central California, serve as a prime example of nature's size, beauty, and diversity. With the world's largest trees (by volume), grand mountains, rugged foothills, deep canyons, vast caverns, and the highest point in the lower 48 states, it is a place that attracts 1.6 million visitors a year from across the U.S. and the world. Visitor activities vary by season and elevation. The majority of Sequoia and Kings Canyon National Parks, nearly 97% of the land or approximately 835,000 acres, is managed as wilderness, including the Sequoia-Kings Canyon and John Krebs wildernesses. For more information, visit www.nps.gov/seki or call 559-565-3341.

EXPERIENCE YOUR AMERICA

The National Park Service cares for special places saved by the American people so that all may experience our heritage.

Sequoia and Kings Canyon National Parks California

Newsletter 2
October 2012

National Park Service
U.S. Department of the Interior



Wilderness Stewardship Plan and Environmental Impact Statement

Preliminary Draft Alternatives Newsletter

Planning for the Future of Sequoia and Kings Canyon National Parks' Wilderness

Dear Friends,

The National Park Service (NPS) is in the early stages of preparing a Wilderness Stewardship Plan (WSP) for Sequoia and Kings Canyon National Parks. Last spring and summer, we received more than 900 comments during the initial public scoping period for the WSP. We reviewed all of the comments and have identified topics which will be addressed in the WSP. For each of the key topics, we have developed preliminary draft alternatives.

Now, we are asking for your input. Please help us identify any topics that we have missed so that we can further refine the alternatives. Take a moment to read this newsletter, which provides a summary of the alternatives, and make sure to visit our planning website at <http://parkplanning.nps.gov/sekiwild> for a detailed description of each of the preliminary draft alternatives. We will be accepting your comments on the preliminary draft alternatives through November 19, 2012. Also, in late October, we will be conducting public meetings to provide additional information, and to listen to your concerns and questions. A complete meeting schedule is found on this page.

We value your feedback during this process and look forward to reading your comments on these preliminary draft alternatives.

Sincerely,

Superintendent *Karen F. Taylor-Goodrich*

Next Steps in the Planning Process

Dates	Planning Activity
Fall 2012	Public Review of Preliminary Draft Alternatives
Winter 2012 - Fall 2013	Refine Draft Alternatives and Prepare Draft WSP/EIS
Fall 2013 - Winter 2014	Public Review of Draft WSP/EIS
Spring 2014	Analysis of Public Comment on Draft WSP/EIS
Summer 2014	Prepare Final WSP/EIS
Fall 2014	Release Final WSP/EIS
Spring 2015	Record of Decision

Public Meetings

Thursday, October 25, 2012

7:00 - 9:00 pm

Eastern Sierra Tri-county Fairgrounds
Patio Building
Sierra Street and Fair Street
Bishop, CA 93514

Friday, October 26, 2012

7:00 - 9:00 pm

Los Angeles River Center
California Building Atrium
570 West Avenue 26
Los Angeles, CA 90065

Monday, October 29, 2012

7:00 - 9:00 pm

East Bay Regional Parks
Redwood Regional Park
Richard C. Trudeau Training Center
Main Conference Room
11500 Skyline Blvd
Oakland, CA 94619

Tuesday, October 30, 2012

6:00 - 8:00 pm

Visalia Marriott Hotel
Main Ballroom
300 South Court Street
Visalia, CA 93291



Purpose and Need for the Wilderness Stewardship Plan

The California Wilderness Act of 1984 designated wilderness in Sequoia and Kings Canyon National Parks. The Omnibus Public Land Management Act of 2009 designated the John Krebs wilderness and expanded wilderness acreage. Today, 808,079 acres of the two parks is designated as wilderness, with another 29,500 acres managed as wilderness in accordance with NPS policies. Since 1986, the wilderness management in the parks has been guided by the Backcountry Management Plan and Stock Use and Meadow Management Plan. The purpose of the new Wilderness Stewardship Plan (WSP) is to establish a framework for management of wilderness within Sequoia and Kings Canyon National Parks in order to preserve wilderness character and provide opportunities for access and use in accordance with the Wilderness Act and other laws and policies.



What is Wilderness Character?

Section 2(a) of the Wilderness Act of 1964 states that wilderness areas “shall be administered for *the use and enjoyment* of the American people in such manner as will leave them unimpaired for future use and enjoyment as wilderness, *and so as to provide for the protection of these areas, the preservation of their wilderness character...*” (emphasis added).

Federal wilderness managers have agreed on the meaning of wilderness character as defined in Keeping It Wild (Landres, et.al.), a 2008 document produced by an interagency panel. The qualities of wilderness character have been categorized as:

- Untrammeled - wilderness is essentially unhindered and free from the *actions* of modern human control or manipulation.
- Natural - wilderness ecological systems are substantially free from the *effects* of modern civilization.
- Undeveloped - wilderness retains its primeval character and influence, and is *essentially* without permanent improvement or modern human occupation.
- Solitude or primitive and unconfined recreation - wilderness provides outstanding opportunities for solitude or primitive and unconfined recreation.
- Unique - An individual wilderness may have unique qualities, such as archeological resources or historic structures whose contributions to wilderness values cannot be captured by the other four qualities.

Preserving wilderness character is our mission, by law and policy.



Actions Common to All Alternatives

Commenters brought forward a number of important issues. However, many are topics related to existing laws, regulations, and policies, or are actions that will be common across all alternatives. The following are examples of these topics:

- Education will be a component of all the alternatives. A separate wilderness education and interpretation plan would be developed.
- Cultural resources, including archeological sites, historic structures, and ethnographic resources, will continue to be managed in accordance with law, including the National Historic Preservation Act.
- Cooperative management with the adjoining U.S. Forest Service wilderness areas, and Yosemite National Park, will continue to occur.
- Existing regulations will remain in place (e.g. no hunting, no pets, no pack goats, no bicycles, no paragliding, no hang gliding, no base jumping, no marijuana cultivation, etc.).
- The protection of threatened, endangered, or sensitive species, and critical habitat, will be considered under each alternative.
- The NPS is developing a resource stewardship strategy for Sequoia and Kings Canyon National Parks that will recommend science- and scholarship-based approaches to achieve and maintain the desired conditions of the parks' natural and cultural resources.
- Sequoia and Kings Canyon National Parks are recognized for being at the forefront of advancing scientific research and the integration of knowledge gained from scientific inquiry into the management of wilderness resources. The WSP will support the continuation of scientific research in wilderness, using methods that preserve the qualities of wilderness character.
- The WSP will be linked to other ongoing or future planning efforts, such as the Cave Management Plan, Aquatic Ecosystem Restoration Plan, Climbing Management Plan, and the Resource Stewardship Strategy.

Zoning

The Wilderness Act and NPS policies provide the foundation for the management of wilderness. Zoning is a management tool that can be used to make distinctions in desired conditions and management actions in wilderness, while meeting the mandates of law and policy. The following four zones would be considered for the WSP (Figure 1).

Zone	Description
Zone A	Areas and trail corridors proximate to non-wilderness areas (within 1 mile of roads, and trail corridors within approximately 6 miles of the trailheads). Examples include the Mist Falls, Little Baldy, Watchtower/Heather Lake, and the Ladybug trail corridors.
Zone B	Includes high use major trail corridors and administrative and visitor developments, such as ranger stations, bridges, and food storage lockers. Trails are highly developed and regularly maintained. Examples include the John Muir, High Sierra, and Pacific Crest trail corridors.
Zone C	Includes lower use trail corridors that are generally less developed. There are fewer administrative and visitor developments. Examples include Taboose Pass to Bench Lake, Kennedy Canyon, and Upper Ranger Meadow to Elizabeth Pass trail corridors.
Zone D	Cross country areas that generally do not include administrative or visitor facilities. Examples include Miter Basin, Lamarck Col/Darwin Canyon, Baxter Pass, and New Army Pass to Mount Langley summit.

For complete information visit <http://parkplanning.nps.gov/sekiwild>

Commercial Services

Through the WSP, a specialized finding of the extent of commercial services necessary (Extent Necessary Determination) to meet one or more of the purposes of wilderness will be completed. If commercial services are shown to be necessary, alternatives could include allowing existing commercial uses, reducing commercial uses, authorizing new types of commercial services, and restricting commercial services in certain zones or areas.



Preliminary Draft Alternatives

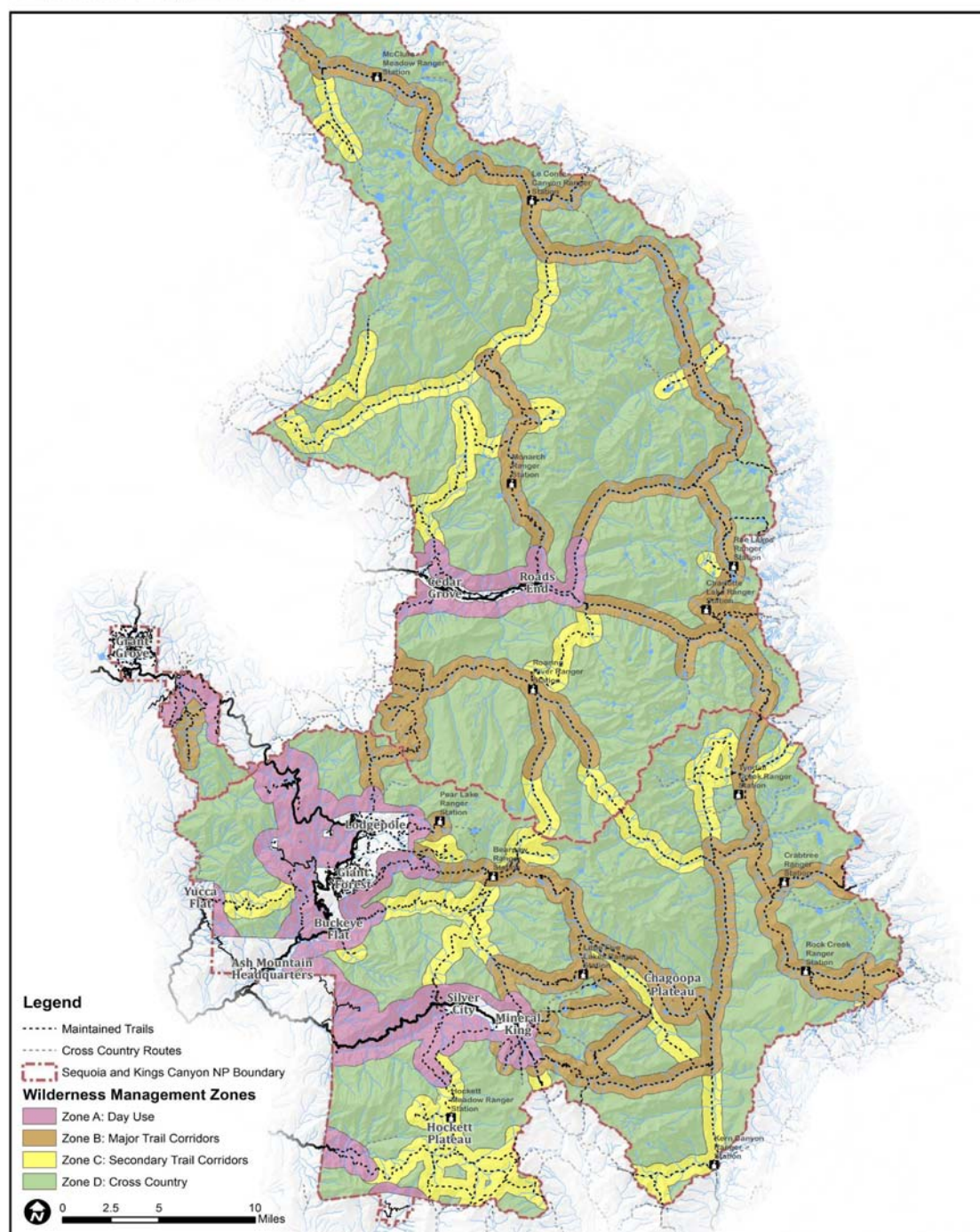
The preliminary draft alternatives are based on wilderness planning guidelines and public input during the scoping process. These preliminary draft alternatives were developed with a goal of maintaining or improving wilderness character while providing for a diversity of appropriate uses.

We encourage you to review the full description of the preliminary draft alternatives located on the web at: <http://parkplanning.nps.gov/sekiwild>. If you are unable to access these materials electronically, a CD or printed version of the information is available by calling (559) 565-3102.

Alternatives will be fully developed following analysis of public input received during the comment period, which ends on November 19, 2012. The alternatives and their descriptions are likely to change as public input is incorporated.

The refined draft alternatives will be presented for public comment as part of the draft WSP/EIS which is scheduled for release in early 2014. A preferred alternative for the WSP will be presented at that time.

Wilderness Management Zones



Key Topics Addressed in the Preliminary Draft Alternatives

Permitting/Quotas

The NPS would develop specific entrance/ trailhead quotas. Destination quotas-- where the total number of visitors allowed at a particular location is limited-- would be considered for selected areas.

Trails/Bridges and Related Trail Structures, including Signs

A Trail Management Plan will be a component of the WSP. A trails classification system is being developed to guide the level of trail development, maintenance, and signing.

Campfires

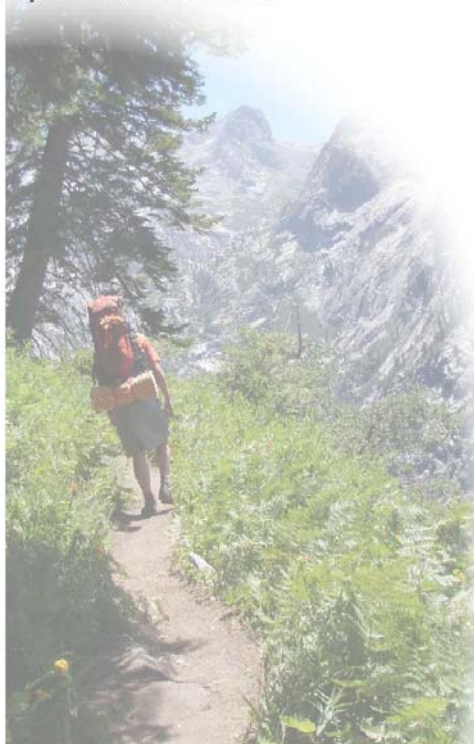
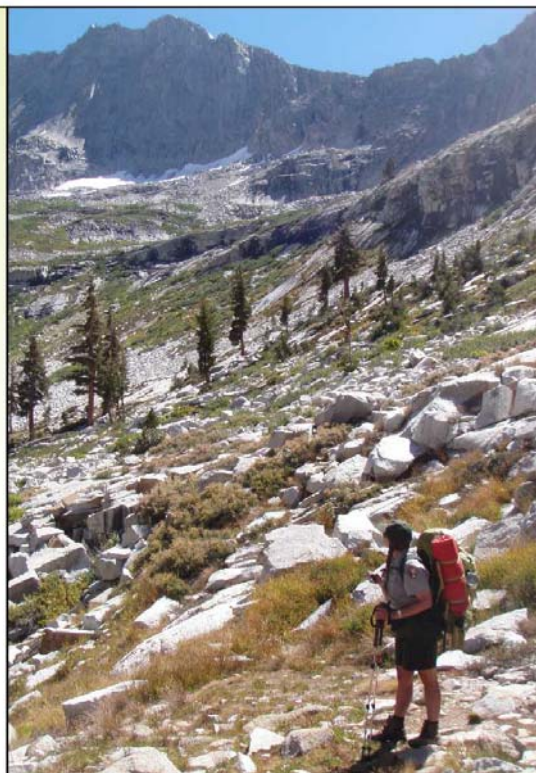
The NPS currently restricts campfires for protection of down wood resources and for other ecological purposes. Elevational fire limits would be considered for resource protection.

Food Storage

Food storage requirements provide resource protection by preventing wildlife from obtaining human food. A range of alternatives is included to address food storage in wilderness.

Human Waste Management

Management goals related to human waste include protecting natural and cultural resources, reducing litter and health hazards created by improperly disposed of toilet paper, and increasing visitor knowledge of appropriate sanitation and toilet paper disposal in wilderness. Alternatives related to facilities and disposal methods are considered.



Party Size - People

The size of groups traveling and/or camping together would be managed to preserve opportunities for solitude and to reduce adverse impacts on the natural character of wilderness. A variety of options are explored.

Party Size - Stock Groups

The size of stock groups would be managed to preserve opportunities for solitude and to manage the impacts on wilderness character created by the number of stock and people traveling and camping together. The number of people, the number of stock, and the combined group size could be limited to manage impacts.

Campsites - Backpacker

Our goal is to provide opportunities for solitude or primitive and unconfined recreation, and to preserve the natural quality of wilderness character, while limiting development. Alternatives include removing, maintaining, and designating campsites.

Campsites - Stock Camps

The NPS will consider alternatives to address the issue of hiker and stock user conflict and to minimize impacts from stock camps to opportunities for solitude and the natural quality of wilderness. Options considered include establishing stock camps and requiring their use, recommending the use of previously used and established camps, and the removal and restoration of some stock camps.

For complete information visit <http://parkplanning.nps.gov/sekiwild>

Page 5 • WSP Newsletter 2 • October 2012



Night Limits for All Campers (Stock and Backpackers)

Short-term night limits in high use areas would be considered in order to protect opportunities for solitude. Short-term night limits could be applied in areas close to trail heads, busy trail junctions, or at popular destinations. Long-term night limits would be established to ensure that individuals / groups do not establish semi-permanent camps thereby limiting opportunities for others.

Stock (horses, mules, burros, and llamas)

Alternatives consider constraints on stock travel for resource protection and to minimize conflicts between users.

Recreational and Administrative Grazing

Options for recreational and administrative grazing are considered, including expanding the existing meadow management program, setting elevational limits on grazing, and prohibiting grazing overall.

Administrative Support Facilities - Ranger Stations, Staging Areas, and Administrative Pastures

Ranger stations may include a tent platform or building and associated administrative facilities. Ranger stations may be used by other administrative functions, such as for resource stewardship, maintenance, and other purposes. Alternatives include keeping existing ranger stations, adding stations, or removing stations.

Administrative Support Facilities - Crew Camps

Crew camps are used by park maintenance, resource managers, and rangers to administer the wilderness. Camps may include core camping areas, fire pits, and food storage lockers. Options for managing crew camps are considered in the alternatives.

Other Facilities

Redwood Canyon Cabin and Cache: The Redwood Canyon cabin and cache is a structure in wilderness. It is currently used by a non-governmental organization to facilitate research in a nearby cave. Future options for this cabin are explored through the WSP.

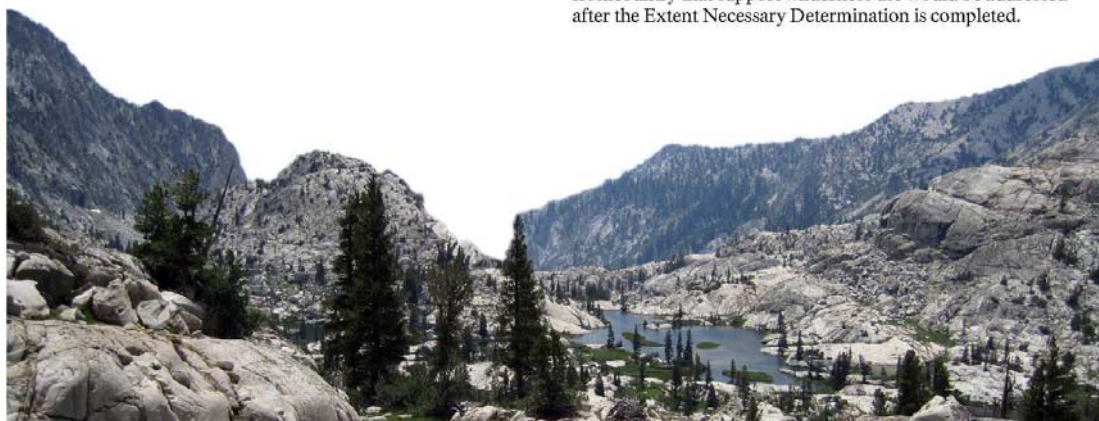
Pear Lake Ski Hut (Ranger Station): The California Wilderness Act of 1984 and its accompanying House of Representatives Committee Report 98-40 (1983) provides for the continued winter operation of the Pear Lake Ski Hut, unless this non-conforming use is deemed to have unacceptable wilderness impacts. The area is categorized as a Potential Designated Wilderness Addition (PDWA) based on the non-conforming use of a commercial enterprise (winter ski hut operation). Options for the continuation or cessation of the ski hut operation are explored in the WSP.

Bearpaw High Sierra Camp: The Bearpaw High Sierra Camp is operated as a commercial enterprise in a PDWA per the California Wilderness Act (1984) and its accompanying House of Representatives Committee Report 98-40 (1983). The WSP will look at options for the continuation or cessation of the non-conforming commercial enterprise of the Bearpaw High Sierra Camp.

Hockett Plateau High Sierra Camp: The 2007 GMP called for the consideration of a new commercial high sierra camp on the Hockett Plateau. However, this option has been ruled out as a result of clauses in the 2009 Omnibus Act requiring the area to be managed as wilderness (Public Law 111-11, March 30, 2009, 123 STAT. 991).

Frontcountry Facilities to Support Wilderness Use

The development or modification of any frontcountry facilities that may support the use, enjoyment, and stewardship of wilderness would be evaluated in the WSP. Commercial services in the frontcountry that support wilderness use would be addressed after the Extent Necessary Determination is completed.



Preliminary Draft Alternatives Overview

The following summary table is representative of what is included in the full matrix of alternatives found at:
<http://parkplanning.nps.gov/sekiwild>

Topic	Alternative 1	Alternative 2	Alternative 3	Alternative 4	Alternative 5	Alternative 6
	No Action - Current management practices continue.	Accommodate increased visitor use while protecting wilderness character by allowing increased facilities for visitor and administrative support.	Protect wilderness resources by balancing visitor access, development, and restrictions.	Protect wilderness resources and reduce need for development by decreasing visitor access and increasing restrictions.	Substantially reduce development and protect wilderness resources by reducing visitor use and increasing restrictions.	Provide for the most unconstrained wilderness experience and protect wilderness by significantly reducing the number of visitors allowed.
Permits	Permits required for overnight use only	Permits required for overnight use only	Permits required for overnight use only	Permits required for day and overnight use	Permits required for day and overnight use	Permits required for day and overnight use
Quotas: Entry	No Change to existing trailhead quotas	Quotas would increase for some trailheads	Quotas would remain mostly unchanged except in high use areas	Quotas decreased at some higher use trailheads	Quotas decreased at most trailheads	Quotas decreased at all trailheads
Quotas: Destination	Some destination quotas exist in popular areas	More destination quotas could be added	More destination quotas could be added	More destination quotas could be added	More destination quotas could be added	No destination quotas
Campfires	Campfires prohibited above 10,000' in KICA and 10,400' in SEQU (and lower in specific locations)	Campfires prohibited above 10,400' (and lower in specific locations)	Campfires prohibited above 10,000' in KICAA and above 8,500' in SEQU	Campfires prohibited above 8,500' wilderness-wide	Campfires prohibited wilderness-wide	Campfires allowed in all areas except Zone A
Food Storage: Requirements	Containers required in some areas	Containers required in some areas	Containers required in some areas	Containers required for all overnight users	Containers required for most overnight users	Self-determined, appropriate food storage required
Food Storage: Lockers	Food storage lockers are present in many locations	Some food storage lockers would be added	Existing food storage lockers would be maintained or some removed	All food storage lockers would be removed	All food storage lockers would be removed	All food storage lockers would be removed
Party Size	Day use limit is 25, overnight limit is 15, stock limit of 20	Party sizes increased	Party sizes mostly unchanged	Party sizes decreased from current limit	Party sizes decreased from current limit	Party sizes decreased from current limit
Stock Use: Access	Stock allowed on most trails	Stock allowed on most trails	Some areas closed to stock	Some areas closed to stock	No stock access in Zone D	Most areas open to stock
Stock Use: Grazing	Grazing is allowed in selected meadows while other meadows are closed to grazing	Some additional meadows may be opened to grazing by small stock parties	Elevation limit established for grazing, but some grazing allowed below elevation limit	Elevation limit established for grazing, but some grazing allowed below elevation limit	No grazing allowed	Few grazing restrictions

For complete information visit <http://parkplanning.nps.gov/sekiwild>

Page 7 • WSP Newsletter 2 • October 2012



National Park Service
U.S. Department of the Interior

Sequoia and Kings Canyon National Parks
47050 Generals Highway
Three Rivers, California 93271-9700
<http://parkplanning.nps.gov/sekiwild>

FIRST-CLASS MAIL
POSTAGE AND FEES PAID
NATIONAL PARK SERVICE
PERMIT NO. G-83

EXPERIENCE YOUR AMERICA

Sequoia and Kings Canyon National Parks

California

Newsletter 2
October 2012

National Park Service
U.S. Department of the Interior



How to Comment

There are several ways to provide comments:

- Access additional information and provide comments online at: <http://parkplanning.nps.gov/sekiwild>;
- Attend the public meetings; or
- Mail or fax comments to:

Karen F. Taylor-Goodrich, Superintendent
ATTN: Wilderness Stewardship Plan Preliminary Draft Alternatives
Sequoia and Kings Canyon National Parks
47050 Generals Highway, Three Rivers, CA 93271-9700
Fax: (559) 565-4202

The comment period for the preliminary draft alternatives ends on November 19, 2012. Before including your address, phone number, e-mail address, or other personal information in your comment, you should be aware that your entire comment – including your personal identifying information – may be publicly available at any time. Comments made by individuals or organizations on behalf of other individuals or organizations will not be accepted.

For complete information visit <http://parkplanning.nps.gov/sekiwild>

Questions to Consider

Is this a sufficient range of alternatives?

Have we missed any key topics?

What do you like about the alternatives?

Are there specific elements that should be changed? If yes, how would you change them?





United States Department of the Interior

NATIONAL PARK SERVICE
Sequoia and Kings Canyon National Parks
47050 Generals Highway
Three Rivers, California 93271-9651
(559) 565-3341



IN REPLY REFER TO:

I.A.1 Permanent

October 3, 2012

David Alvarez, Chairperson
Traditional Choinumni Tribe
2415 East Houston Avenue
Fresno, CA 93720

Dear Chairperson Alvarez:

As you may be aware, we are in the process of preparing a Wilderness Stewardship Plan for Sequoia and Kings Canyon National Parks. Last spring and summer, we conducted public scoping and offered to meet with area tribes to discuss your concerns and issues. We received more than 900 pieces of correspondence during this initial scoping period. We were able to meet with several tribal representatives during this period. Many people brought forward substantive issues and topics which provided us with information we needed to develop preliminary draft alternatives. We now are seeking your input on these alternatives.

The preliminary draft alternatives newsletter is attached. The newsletter provides you with a summary of the alternatives; for more comprehensive information, please visit our planning website at:
<http://parkplanning.nps.gov/sekiwild>.

We are available for government-to-government consultation with your tribal group or organization if you wish to discuss the Wilderness Stewardship Plan. We would be happy to make a presentation at an upcoming tribal meeting at a location of your choosing, and to talk about your issues and concerns.

To schedule a meeting, please contact Wilderness Coordinator Gregg Fauth at (559) 565-3137 (email at gregg_fauth@nps.gov) or Cultural Resources Program Manager, David Humphrey (559) 565-3139 (email at dave_humphrey@nps.gov). We look forward to working with you on this and other future planning efforts.

Sincerely,

Karen F. Taylor-Goodrich
Superintendent

Identical letter sent to the following area tribes, tribal organizations, or tribal representatives.

Chairperson David Alvarez
Traditional Choinumni Tribe
2415 East Houston Avenue
Fresno, CA 93720

Chairman Raymond Andrews
Kutzadika Indian Community Cultural
Preserve
P.O. Box 591
Bishop, CA 93515

Chair Ruben Barrios
Santa Rosa Rancheria
P.O. Box 8
Lemoore, CA 93245

Tribal Chairwoman Donna Begay
Tubatulabs of Kern Valley
P.O. Box 226
Lake Isabella, CA 93240

Chair Elaine Bethel-Fink
North Fork Rancheria of Mono Indians
P.O. Box 929
North Fork, CA 93643

Chairperson Lawrence Bill
Sierra Nevada Native American Coalition
P.O. Box 125
Dunlap, CA 93621

Vice Chair Richard Button
Lone Pine Paiute-Shoshone
P.O. Box 747
Lone Pine, CA 93545

Chairman John Davis
Kings River Choinumni Farm Tribe
1064 Oxford Avenue
Clovis, CA 93612-2211

Chairman Dale Delgado Jr.
Bishop Paiute Tribe
50 Tu Su Lane
Bishop, CA 93514

Chairperson Delia Dominguez
Kitanemuk & Yowlumne Tejon Indians
981 N. Virginia
Covina, CA 91722

Chair Ryan Garfield
Tule River Indian Tribe
P.O. Box 589
Porterville, CA 93258

Tribal Council Chairman John L. Glazier
Bridgeport Paiute Indian Colony
P.O. Box 37
Bridgeport, CA 93517

Chairperson Ron Goode
North Fork Mono Tribe
13396 Tollhouse Rd.
Clovis, CA 93619

Tribal Historic Preservation Officer Bill
Helmer
Big Pine Band of Owens Valley
P.O. Box 700
Big Pine, CA 93513

Chairperson Elizabeth Hutchins-Kipp
Big Sandy Rancheria of Mono Indians
P.O. Box 337
Auberry, CA 93602

Chair Melvin R. Joseph
Lone Pine Paiute-Shoshone Reservation
P.O. Box 747
Lone Pine, CA 93545

Chairperson Charlotte Lange
Mono Lake Indian Community
P.O. Box 117
Big Pine, CA 93513

Chair David Laughing Horse Robinson
Kawaiisu Tribe
P.O. Box 1547
Kernville, CA 93238

Board Chairperson Mandy Marine
Dunlap Band of Mono Indians
P.O. Box 18
Dunlap, CA 93621

Chairperson Robert Marquez
Cold Springs Rancheria of Mono Indians
P.O. Box 209
Tollhouse, CA 93667

Chairperson Virgil D. Moose
Big Pine Paiute Tribe of Owens Valley
P.O. Box 700
Big Pine, CA 93513

Chair Israel Naylor
Fort Independence Paiute Indians
P.O. Box 67
Independence, CA 93526

Tribal Historic Preservation Officer
Matthew J. Nelson
Bishop Paiute Tribe
50 Tu Su Lane
Bishop, CA 93514

Chairperson Neil Peyron
Tule River Indian Tribe
P.O. Box 589
Porterville, CA 93258

Chair James Ramos
San Manuel Band of Mission Indians
26569 Community Center Dr.
Highland, CA 95236

Co-Chairperson Robert Robinson
Kern Valley Indian Community Tribal
Council
P.O. Box 401
Weldon, CA 93283

Chairperson Jake Saulque
Benton Paiute Reservation
567 Yellow Jacket Rd
Benton, CA 93512

Chairperson Rosemary Smith
The Choinumni Tribe of Yokuts
1505 Barstow
Clovis, CA 96311

Vice-Chair William Vega
Bishop Indian Tribal Council
50 Tu Su Lane
Bishop, CA 93514

Chair Leanne Walker-Grant
Table Mountain Rancheria
P.O. Box 410
Friant, CA 93626

Chair June Walker-Price
Kern Valley Indian Community Tribal
Council
P.O. Box 1010
Lake Isabella, CA 93240

Chair Susan Weese
Wukchumni Tribal Council
1918 N. Tipton
Visalia, CA 93292

Chairperson Ken Woodrow
Eshom Valley Band of Indians /
Wuksache Tribe
1179 Rock Haven Court
Salinas, CA 93906

Chairperson Mary Wuester
Paiute-Shoshone of Lone Pine
P.O. Box 747
Lone Pine, CA 93545