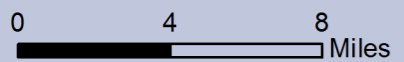
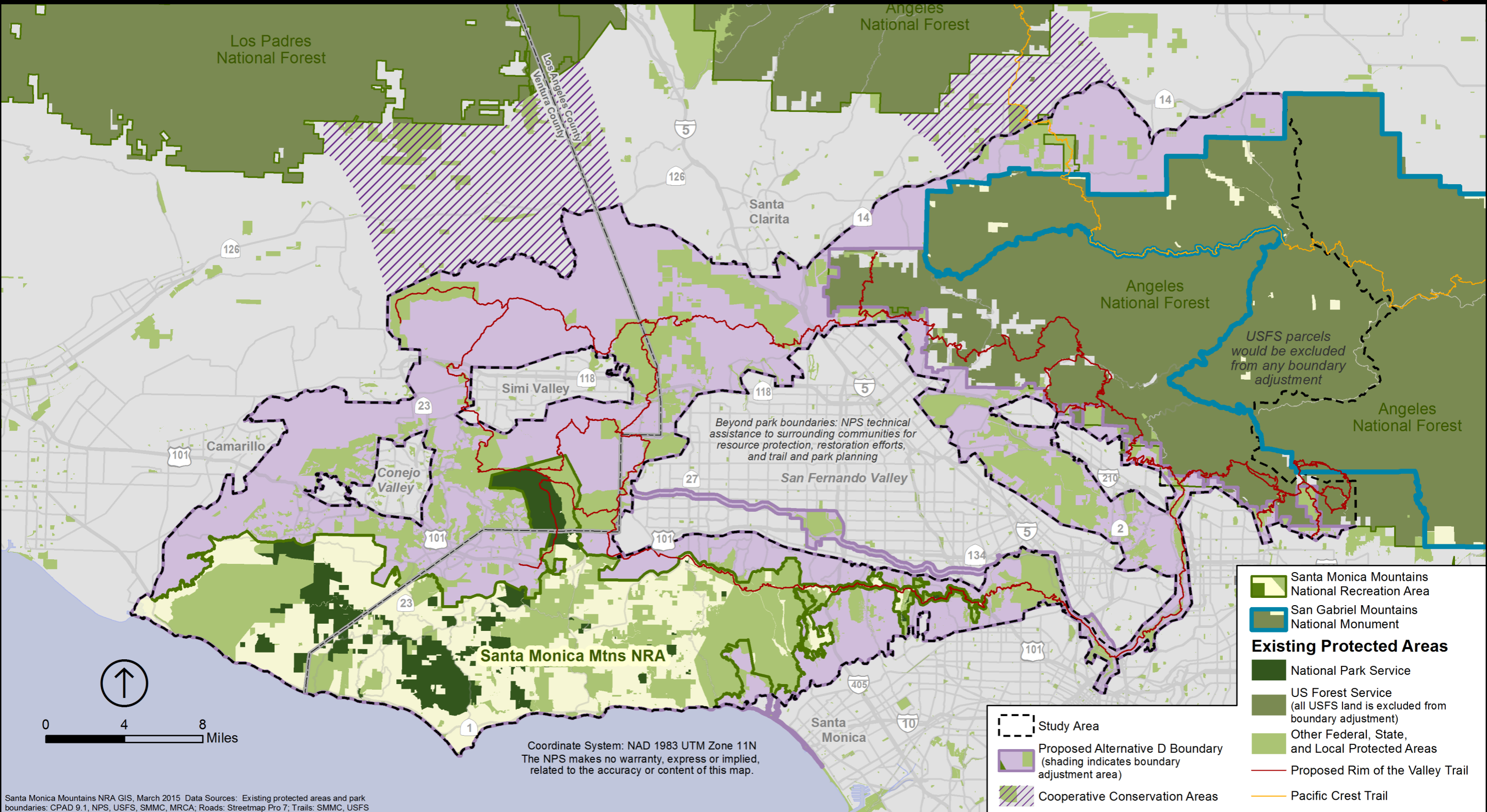


Alternative D

Regional Rim of the Valley Boundary Adjustment and Cooperative Conservation Areas



Coordinate System: NAD 1983 UTM Zone 11N
The NPS makes no warranty, express or implied, related to the accuracy or content of this map.

- Santa Monica Mountains National Recreation Area
- San Gabriel Mountains National Monument
- Existing Protected Areas**
- National Park Service
- US Forest Service (all USFS land is excluded from boundary adjustment)
- Other Federal, State, and Local Protected Areas
- Proposed Rim of the Valley Trail
- Pacific Crest Trail

- Study Area
- Proposed Alternative D Boundary (shading indicates boundary adjustment area)
- Cooperative Conservation Areas

Santa Monica Mountains NRA GIS, March 2015. Data Sources: Existing protected areas and park boundaries: CPAD 9.1, NPS, USFS, SMMC, MRCA; Roads: Streetmap Pro 7; Trails: SMMC, USFS