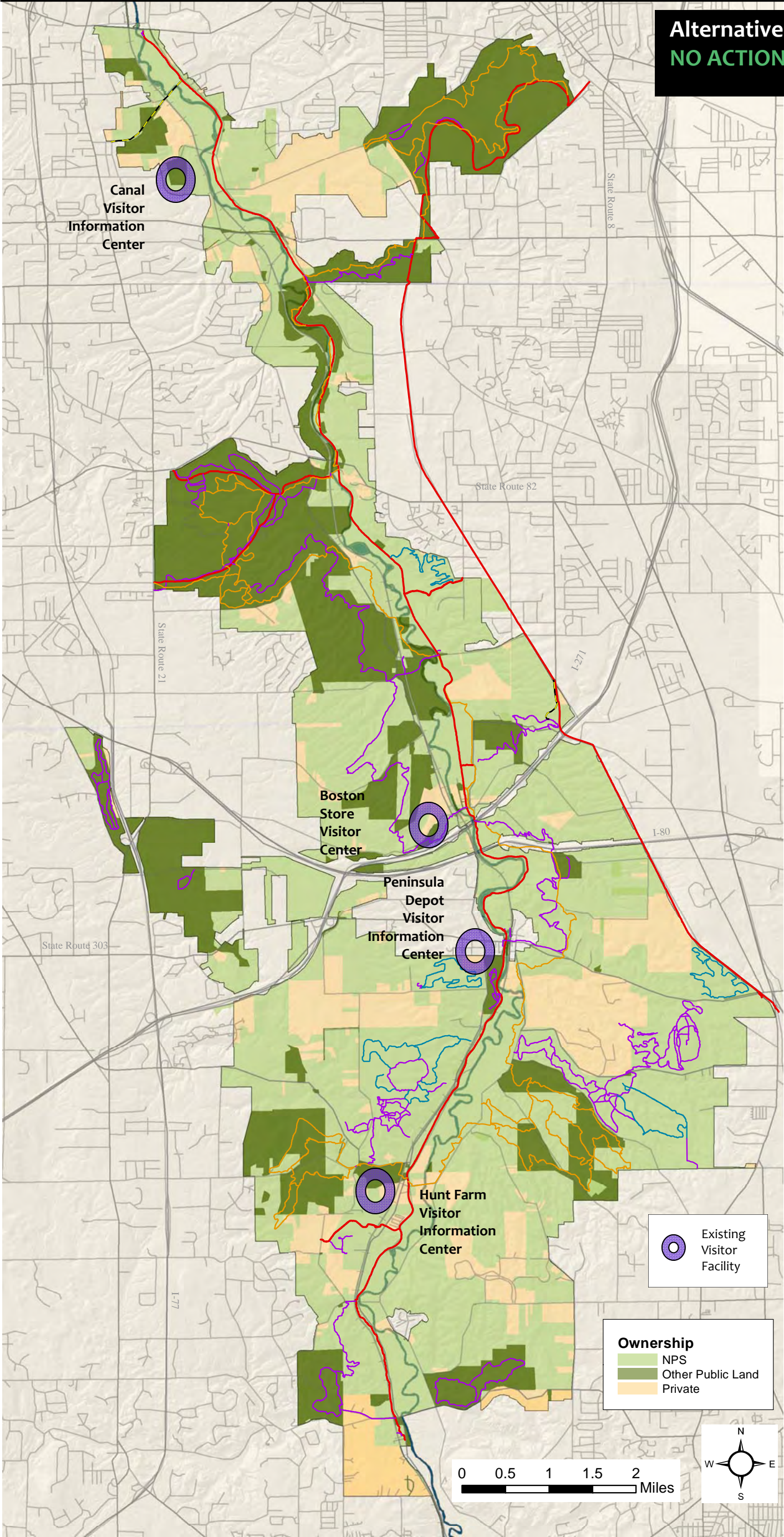
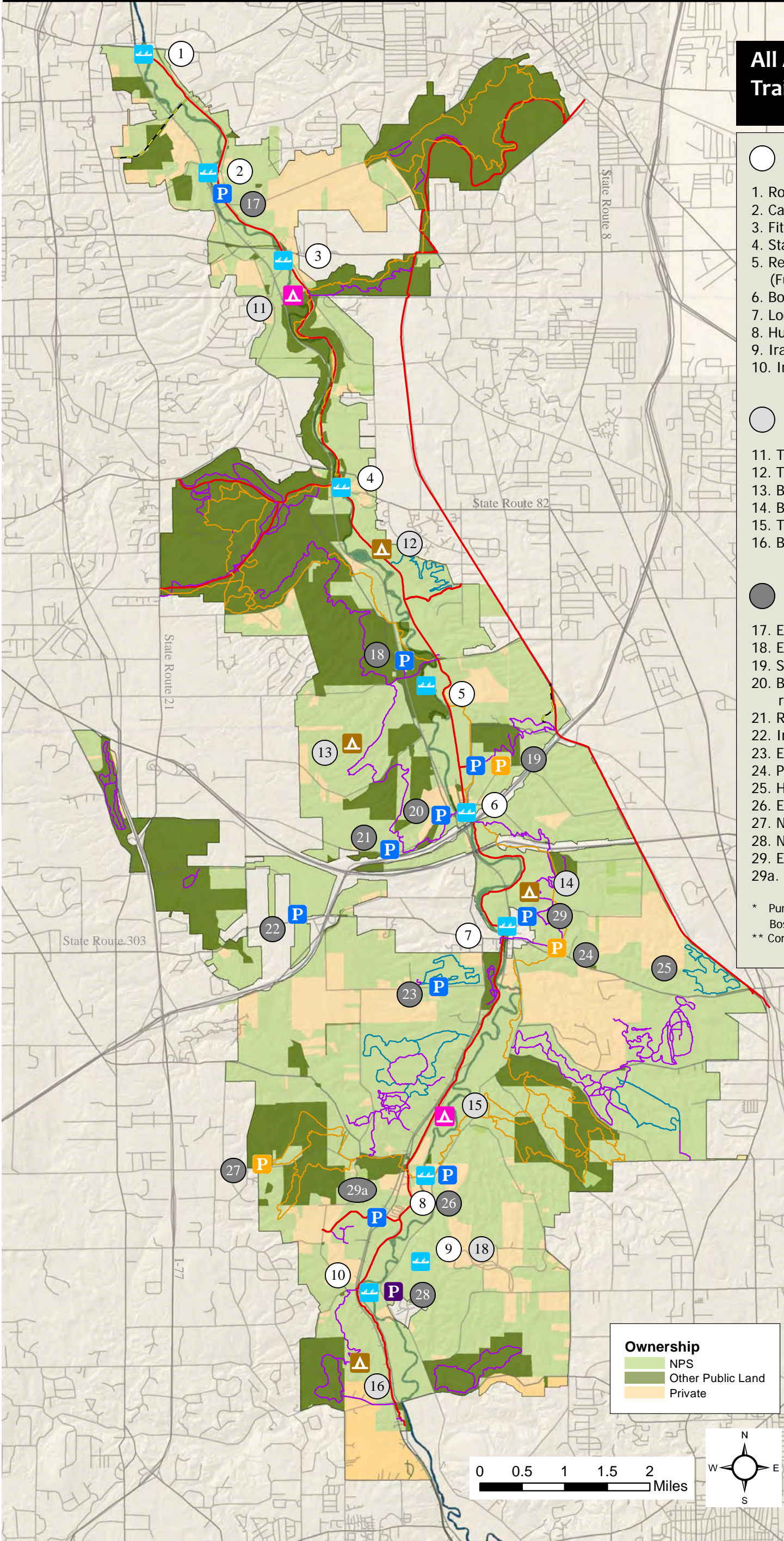




Alternative 1:  
NO ACTION







All Action Alternative  
Trail Facilities

Water Trail Launch Facilities

- 1. Rockside Trailhead (Primary)
- 2. Canal Visitor Trailhead (Secondary)
- 3. Fitzwater Bridge (Future Potential)
- 4. Station Road Trailhead (Primary)
- 5. Red Lock - Highland Bridge (Future Conditional)
- 6. Boston Store Trailhead (Secondary)
- 7. Lock 29 Trailhead (Future Potential)
- 8. Hunt Farm (Future Potential)
- 9. Ira Trailhead - West (Secondary)
- 10. Ira Road East (Primary)

Campsites

- 11. Towpath-Frazer
- 12. Towpath-Old Carriage
- 13. Buckeye-Columbia
- 14. Buckeye-Dugway
- 15. Towpath-North Hunt Farm
- 16. Buckeye-O'Neil

Parking

- 17. Expand Canal Visitor Parking
- 18. Expand Jaite Wayside
- 19. Stanford - New Car and Equestrian \*
- 20. Boston Annex - Expand for car and remove equestrian \*
- 21. Relocate and Expand Blue Hen
- 22. Improve Coliseum
- 23. Expand Horseshoe Pond
- 24. Pine Lane - New Equestrian
- 25. Happy Days Lodge Expansion \*\*
- 26. Expand Hunt Farm
- 27. New Old Orchard Equestrian
- 28. New Ira Paddle
- 29. Expand Lock 29 Overflow
- 29a. Relocate/Expand Indigo Lake

\* Pursuant to Record of Decision of Boston Planning Environmental Assessment.  
\*\* Compliance Completed

Ownership

- NPS
- Other Public Land
- Private

Paddle Launch

- Paddle Launch

Campsites

- Riverside Campsite
- Trailsite Campsite

Parking Facilities

- Expand Existing
- New
- Equestrian New





All Action Alternative  
New Trails & Restoration

Restoration

- 30. Hemlock Multi-use connector (under separate compliance study)
- 31. Remove duplicate trail system in Lower Bedford Reservation.
- 32. Restore use of Old Carriage Trail (under separate compliance study)
- 33. Consolidate and reroute Buckeye and Valley trails.
- 34. Bike & Hike Trail Connector (complete)
- 35. Remove duplicate trails and reroute Valley bridle along Highway Right of way.
- 36. Remove Ledges Social trails.
- 37. Remove Lake Trail portion.
- 38. Reroute Perkins/Riding Run Trails
- 39. Remove Dickerson Trail

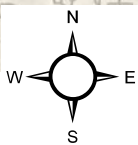
Restoration

- Multipurpose Existing
- Hiking Existing
- Bridle Existing
- Cross-Country Ski Existing
- Multipurpose Common
- Cross-Country Ski Common
- Hiking Existing Removed
- Bridle Existing Removed

Ownership

- NPS
- Other Public Land
- Private

0 0.5 1 1.5 2 Miles







Alternative 2A:  
ReUse

- 40. Stone Road Campsite—(Future Potential)
- 41. Terra Vista Hike Trail and Trailhead
- 42. Terra Vista Improved Parking
- 43. Fitzwater Multipurpose Connector
- 44. Sagamore Multiuse Connector
- 45. Extend Old Carriage Multipurpose Connector
- 46. South Carriage Trail Loop
- 47. Red Lock Parking Expansion
- 48. jaite Wayside Equestrian Parking
- 49. Stanford Multipurpose Connector
- 50. Old AP Multipurpose Connector
- 51. Lock 29 North Campsite (Future Potential)
- 52. Coliseum Birding Overlook and Trailhead
- 53. Horseshoe Pond Hike Loop
- 54. Designate Towpath-Valley Picnic Area Connector Hike Trail
- 55. Boston Run Connector Hike Trail to Hike&Bike
- 56. Valley–Salt Run Connector
- 57. Improve/Expand Armington Loop
- 58. Ira-River Trail
- 59. Ira Campsite (Future Potential)

Alternative 2A

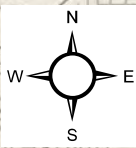
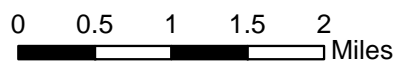
- Multipurpose Existing
- Hiking Existing
- Bridle Existing
- Cross-Country Ski Existing
- Multipurpose Common
- Cross-Country Ski Common
- Hiking Existing Removed
- Bridle Existing Removed
- Multipurpose New
- Interpretive Hike
- Hiking New
- Bridle New
- Cross-Country Ski New

- Campsites
- Riverside Campsite
  - Trailside Campsite

- Parking Facilities
- Expand Existing
  - New
  - Equestrian New

- Ownership
- NPS
  - Other Public Land
  - Private

- Visitor Center

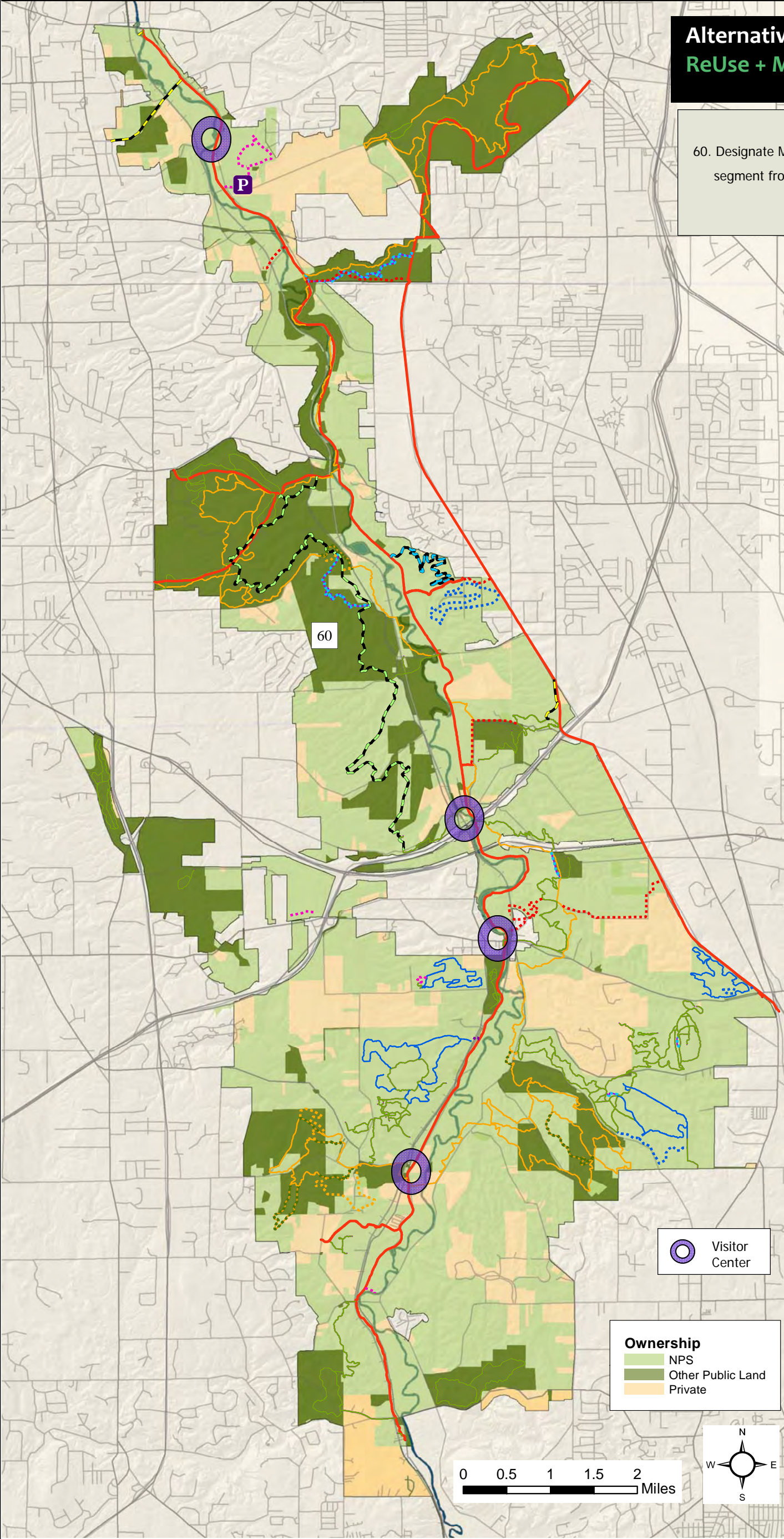






Alternative 2B:  
ReUse + Mountain Bike Trail

60. Designate Mountain Bike use on Buckeye trail segment from Boston Mills to Station Road.



- Alternative 2B**
- Multipurpose Existing
  - Hiking Existing
  - Cross Country Ski Existing
  - Bridle Existing
  - Multipurpose Common
  - Cross Country Ski Common
  - Hiking Existing Removed
  - Bridle Existing Removed
  - Multipurpose New
  - Hiking New
  - Interpretive Hike
  - Bridle New
  - Cross Country Ski New
  - Mountain Bike
  - New Parking





Alternative 3A:  
Recreation Focus

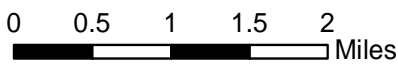
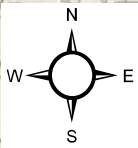
61. Short Loop Rockside Station
62. Rockside-Hemlock Loop Trail
63. Upper CVC Hike Short Loop Trail
64. Upper CVC—Trailside Campsite
65. West Rim Hike Trail
66. Fawn Pond Riverside Campsite
67. Hrbarak– West Rim Trailside Campsite
68. Highland Multi-Use Connector
69. Five Falls Hike Trail
70. Stanford– Hines Hill Short Loop
71. Jaite Short Loop
72. Jaite– Highland Bridle Trail
73. High Meadow Trail & New Parking Area
74. Blue Hen Loop Trail
75. Expanded Tree Farm Loop
76. Lock 29 Short Loop Trail
77. Expand Boston Mills Bike & Hike Parking Area
78. Dugway Bridle Trail
79. Gateway Multiuse Connector
80. Hunt Farm River Hike Loop
81. Howe - Everett Connector Trail
82. Lower Furnace Run Trail
- Bike Lanes
83. Pleasant Valley
84. Riverview Road
85. Highland Road
86. Snowville Road
87. Major –Brush– Black–303 Road
88. Akron– Peninsula Road
89. Wheatley Road
90. Revere-Everett Road
91. Steele Corners Road
92. Bath Road

Trail Elements included  
from Alternative 2A

- Fitzwater Multi-use Connector
- Sagamore Multi-use Connector
- South Carriage Trail
- Stanford Multi-Use Connector
- Coliseums Boardwalk
- Horseshoe Pond Trail
- Ira River Trail
- Boston Run Connector
- Armington Trail
- Salt Run–Valley Bridle
- Connector
- Valley Picnic–Towpath Connector

Ownership

- NPS
- Other Public Land
- Private



Alternative 3A

- Multipurpose Existing
- Hiking Existing
- Bridle Existing
- Cross Country Ski Existing
- Multipurpose Common
- Cross Country Ski Common
- Bridle Existing Removed
- Hiking Existing Removed
- Multipurpose New
- Hiking New
- Interpretive Hike
- Bridle New
- Cross Country Ski New
- Bike Lanes

Campsites

- Riverside Campsite
- Trailside Campsite

Parking Facilities

- Parking Expand Existing
- Parking - New





Alternative 3B  
Recreation Focus +  
Mountain Bike Trails

All trail elements proposed in Alternative 3A  
Plus:

- 93. West Central Mountain Bike Trail
- 94. East Central Mountain Bike Trail
- 95. New Snowville Parking Area

Alternative 3B

- Multipurpose Existing
- Hiking Existing
- Bridle Existing
- Cross- Country Ski Existing
- Multipurpose Common
- Cross Country Ski Common
- Hiking Existing Removed
- Bridle Existing Removed
- Multipurpose New
- Hiking New
- Bridle New
- Interpretive Hike New
- Cross Country Ski New
- Mountain Bike
- Bike Lanes

Campsites

- Riverside Campsite
- Trailside Campsite

Parking Facilities

- Parking - New
- Parking - Expand Existing

Ownership

- NPS
- Other Public Land
- Private

0 0.5 1 1.5 2 Miles

2





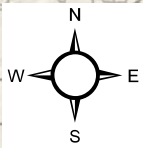
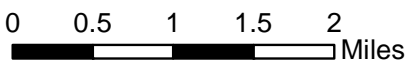
Alternative 4A:  
Destination Focus

- 96. CVC Boardwalk Trail
- 97. Sagamore Hike Trail
- 98. Mudcatcher Hike Trail & Expanded Parking
- 99. Station Road—Route 83 Connector
- 100. East Rim Hike Trail
- 101. Greenwood Neighborhood Connector
- 102. Echo Hill Neighborhood Connector
- 103. Columbia Hike Trail
- 104. Buttermilk Falls Hike Trail
- 105. Dugway Hike Trail
- 106. Gateway Hike Trail
- 107. Shady Grove Loop Trail
- 108. Tree Farm-Daffodil Trail
- 109. Plateau- Tree Farm Trail
- 110. Everett - Plateau Trail
- 111. Ira– Howe Trail
- 112. Maplewood Trail
- 113. Ira– Hampton Trail
- 114. Off-Road Buckeye Trail
- 115. Chart Road Neighborhood Connector

Trail Elements included  
from Alternative  
2A & 3A

- Fitzwater Multi-use Connector
- West Rim Trail
- Sagamore Multi-use Connector
- South Carriage Trail
- Stanford Multi-Use Connector
- Horseshoe Pond Trail
- Ira River Trail
- Boston Run Connector
- Old AP Connector
- Armington Trail
- Salt Run—Valley Connector
- Valley Picnic—Towpath Connector
- High Meadow Trail
- Howe-Everett Connector
- Stanford-Hines Hill Loop
- Blue Hen Falls Loop
- Five Falls Trail
- Bike Lanes

- Ownership**
- NPS
  - Other Public Land
  - Private



Alternative 4A

- Multipurpose Existing
- Hiking Existing
- Bridle Existing
- Cross Country Ski Existing
- Multipurpose Common
- Cross Country Ski Common
- Hiking Existing Removed
- Bridle Existing Removed
- Multipurpose New
- Hiking New
- Interpretive Hike
- Bridle New
- Cross Country Ski New
- Neighborhood Connectors
- Bike Lanes

Parking Facilities

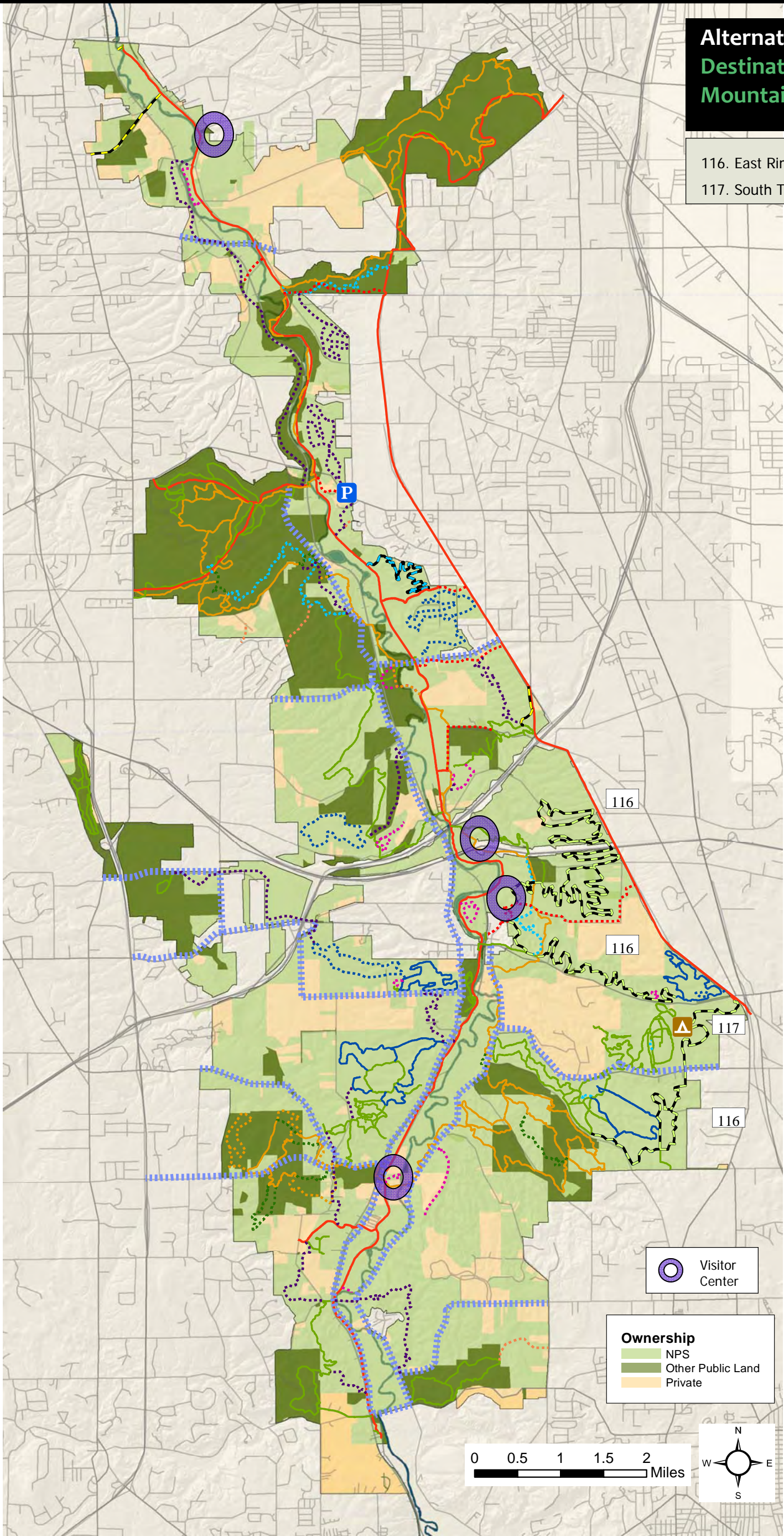
- Parking - Expand Existing





Alternative 4B:  
Destination Focus +  
Mountain Bike Trail

116. East Rim Mountain Bike Trail  
117. South Truxell Trailside Campsite

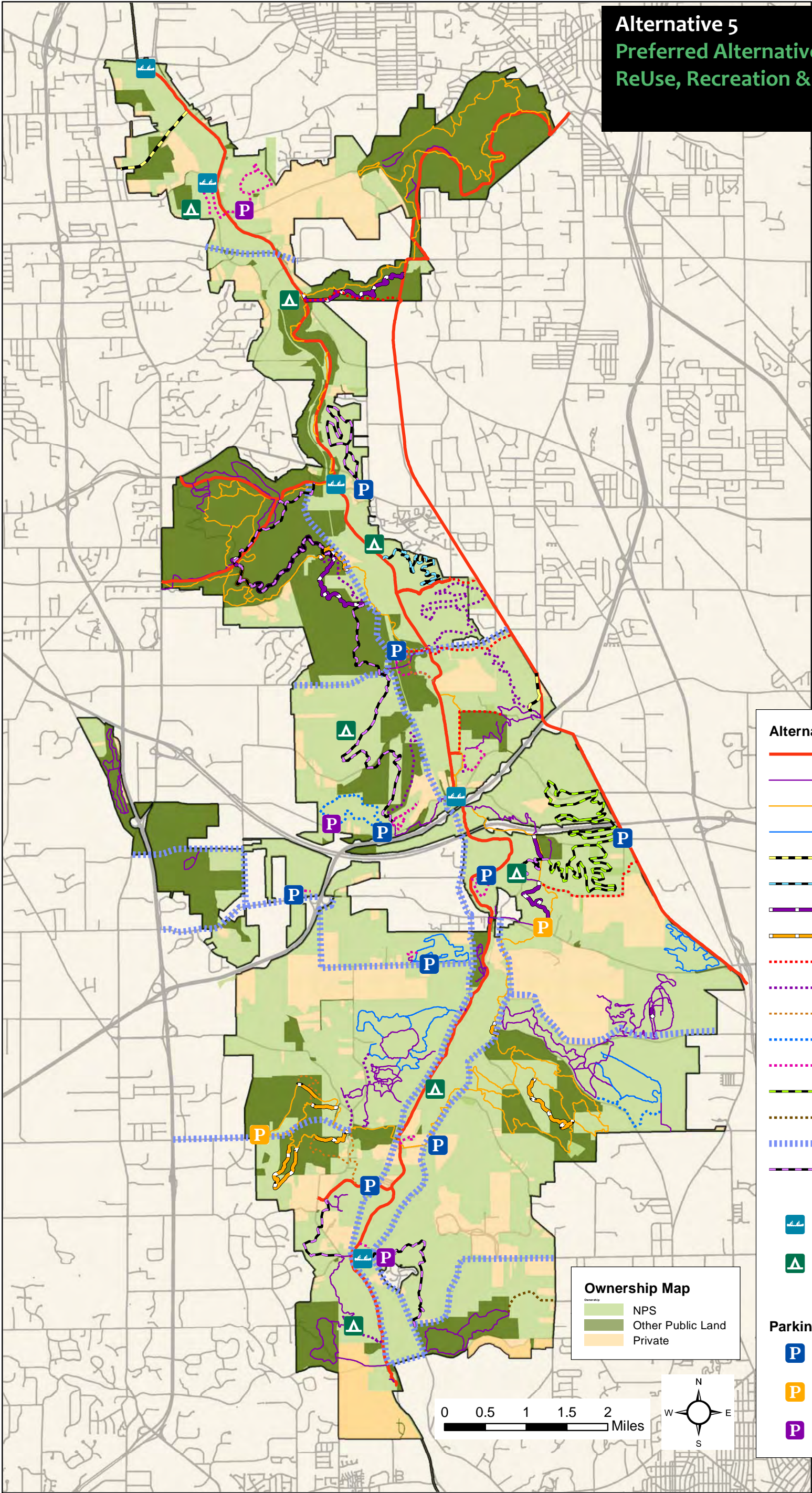


Alternative 4B

Trails

- Multipurpose Existing
- Hiking Existing
- Bridle Existing
- Cross Country Ski Existing
- Multipurpose Common
- Cross Country Ski Common
- Hiking Existing Removed
- Bridle Existing Removed
- Multipurpose New
- Hiking New
- Interpretive Hike
- Bridle New
- Cross Country Ski New
- Mountain Bike
- Neighborhood Connectors
- Bike Lanes
- Trailside Campsite
- Parking - Expand Existing





Alternative 5  
Preferred Alternative  
ReUse, Recreation & Destination

- Alternative 5**
- MultiPurpose Existing
  - Hiking Existing
  - Bridle Existing
  - Cross-Country Ski Existing
  - Multi-Purpose Common
  - Cross-Country Ski Common
  - Hiking Existing Removed
  - Bridle Existing Removed
  - Multipurpose New
  - Hiking New
  - Bridle New
  - Cross-Country Ski New
  - Interpretive Hike
  - Mountain Bike
  - Neighborhood Connectors
  - Bike Lanes
  - Conditional
- Paddle Launch Sites**
- Paddle Launch Sites
- Campsites**
- Campsites
- Parking**
- Existing Expand or Improve
  - New Equestrian
  - New

**Ownership Map**

Ownership

- NPS
- Other Public Land
- Private