



**NATIONAL  
PARK  
SERVICE**

# Environmental Impact Statement Susquehanna to Roseland Transmission Line

Public Alternatives Meeting  
August 17, 18, and 19, 2010

**Appalachian National Scenic Trail  
Delaware Water Gap National Recreation Area  
Middle Delaware National Scenic and Recreational River**

*John J. Donahue, Superintendent*  
**Delaware Water Gap National Recreation Area**

*Pamela Underhill, Superintendent*  
**Appalachian National Scenic Trail**



# Appalachian National Scenic Trail

## Delaware Water Gap National Recreation Area

### Middle Delaware National Scenic and Recreational River

National Park Service  
U.S. Department of the Interior

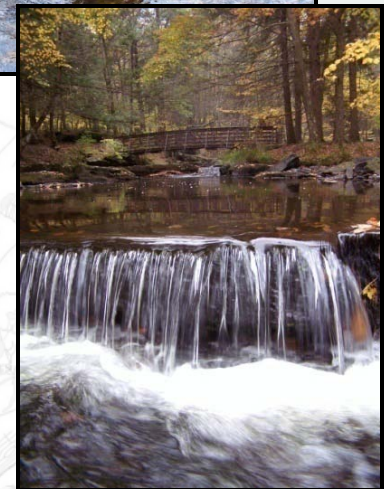


U.S. Army Corps of Engineers  
Philadelphia District



## Overview

- Purpose and Significance of Park Units
- Purpose and Need for Federal Action
- NEPA Process
- Public Comments
- Alternatives Evaluation Process
- Alternatives Considered but Dismissed
- Alternatives Overview
- EIS schedule



EXPERIENCE  
YOUR  
AMERICA

# Appalachian National Scenic Trail Delaware Water Gap National Recreation Area Middle Delaware National Scenic and Recreational River

National Park Service  
U.S. Department of the Interior

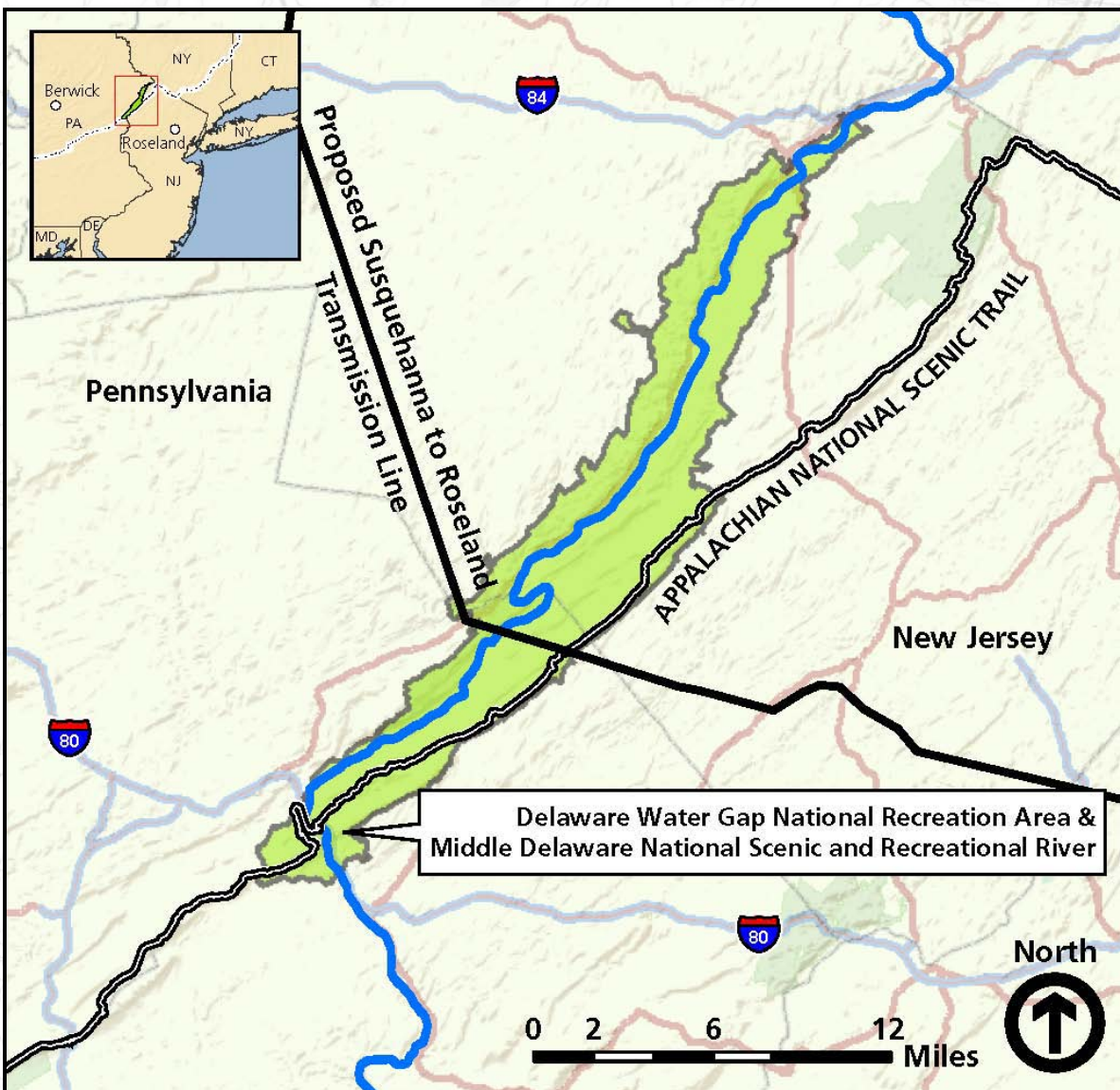


U.S. Army Corps of Engineers  
Philadelphia District



EXPERIENCE  
YOUR  
AMERICA

## Park Boundaries and the Proposed S-R Transmission Line





# Appalachian National Scenic Trail Delaware Water Gap National Recreation Area Middle Delaware National Scenic and Recreational River

National Park Service  
U.S. Department of the Interior



U.S. Army Corps of Engineers  
Philadelphia District



## The Organic Act & Park Enabling Legislation

### 16 USC 1, the National Park Service Organic Act

*"...to conserve the scenery and the natural and historic objects and the wild life therein and to provide for the enjoyment of the same in such manner and by such means as will leave them unimpaired for the enjoyment of future generations."*

### APPALACHIAN NATIONAL SCENIC TRAIL

#### Public Law 90-543 (16 USC 1241 et. Seq.)

*"...so located as to provide for maximum outdoor recreational potential and for the conservation and enjoyment of the nationally significant **scenic, historic, natural,** or **cultural** qualities of the areas through which such trails may pass."*

### DELAWARE WATER GAP NATIONAL RECREATION AREA

#### Public Law 89-158; 89th Congress HR 89

*Calls for the "...preservation of the **scenic, scientific,** and **historic** features contributing to public enjoyment of such lands and waters..."*

### MIDDLE DELAWARE NATIONAL SCENIC AND RECREATIONAL RIVER

#### Public Law 95-625; National Parks and Recreation Act of 1978 (16 USC 1274), Section 705

*"...primary emphasis shall be given to protect [the area's] **esthetic scenic, historic, agricultural,** and **scientific** features."*

EXPERIENCE  
YOUR  
AMERICA

# Appalachian National Scenic Trail

## Delaware Water Gap National Recreation Area

### Middle Delaware National Scenic and Recreational River

National Park Service  
U.S. Department of the Interior



U.S. Army Corps of Engineers  
Philadelphia District



## APPA, DEWA, and MDSR

Together the three park units provide:

- Waters of exceptional quality (the approximately 40 miles of river within DEWA are designated the Middle Delaware National Scenic and Recreational River);
- One of the largest public open spaces in the northeastern metropolitan corridor;
- Outstanding geologic and natural features including the world renowned Delaware Water Gap;
- Habitat for rare and threatened species, as well as a significant pathway for migratory birds;
- Open spaces that create a multi-state greenway corridor;
- Significant concentrations and diversity of known archeological resources; and
- A continuous path from Maine to Georgia for travel on foot through the wild, scenic, wooded, pastoral, and culturally significant lands of the Appalachian Mountains.

EXPERIENCE  
YOUR  
AMERICA



# Appalachian National Scenic Trail Delaware Water Gap National Recreation Area Middle Delaware National Scenic and Recreational River

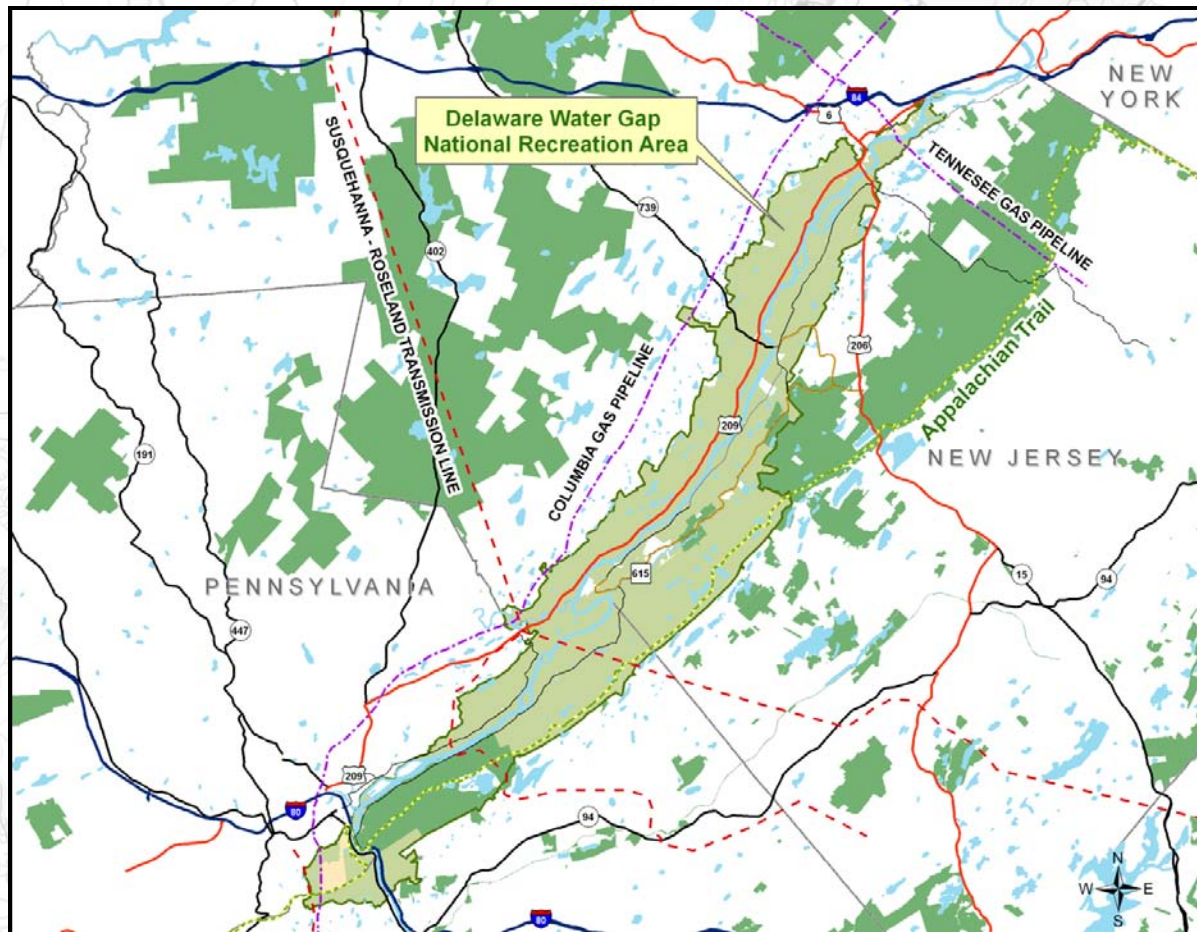
National Park Service  
U.S. Department of the Interior



U.S. Army Corps of Engineers  
Philadelphia District



## Existing Major Utilities/ Infrastructure Crossings at DEWA



EXPERIENCE  
YOUR  
AMERICA

# Appalachian National Scenic Trail

## Delaware Water Gap National Recreation Area

### Middle Delaware National Scenic and Recreational River

National Park Service  
U.S. Department of the Interior



U.S. Army Corps of Engineers  
Philadelphia District



## Current APPA Power Line Projects

- Quebec Hydro
- Susquehanna to Roseland (PPL)
- Ringgold-Monocacy
- PATH
- Dominion

EXPERIENCE  
YOUR  
AMERICA



# Appalachian National Scenic Trail

## Delaware Water Gap National Recreation Area

### Middle Delaware National Scenic and Recreational River

National Park Service  
U.S. Department of the Interior



U.S. Army Corps of Engineers  
Philadelphia District



EXPERIENCE  
YOUR  
AMERICA

## Purpose and Need for Federal Action

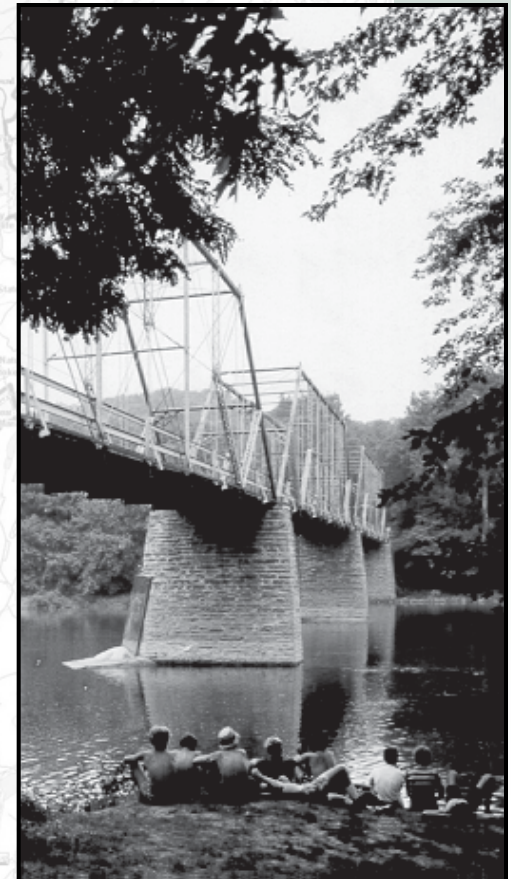
*In March 2009, PPL and PSE&G Utilities submitted their project proposal and permit application. A right-of-way (ROW) permit is needed because additional land is required beyond their existing rights. A construction permit is also required.*

### Purpose:

To respond to the Applicants' expressed need to expand its current right-of-way to construct new and taller power lines and add an additional 500kV power line, in light of the purposes and resources of the affected units of the National Park System, as expressed in statutes, regulations, and policies.

### Need:

NPS has a duty to consider whether, and with what conditions, if any, to issue requested right-of-way and construction permits.







# National Environmental Policy Act (NEPA) Process

## Environmental Impact Statement (EIS)

- Public and Internal Scoping Period
- Development of Alternatives
- Analysis of Data and Preparation of Draft EIS
- Public Review of Draft EIS
- Analysis of Public Comment
- Preparation of Record of Decision and Final EIS
- Announcement of Record of Decision



EXPERIENCE  
YOUR  
AMERICA

# Appalachian National Scenic Trail

## Delaware Water Gap National Recreation Area

### Middle Delaware National Scenic and Recreational River

National Park Service  
U.S. Department of the Interior



U.S. Army Corps of Engineers  
Philadelphia District



## NEPA Process (cont.)

The purpose of NEPA is “to encourage productive and enjoyable harmony between human beings and the physical environment for present and future generations” by:

- mandating that every federal agency prepare an in-depth study of the impacts of “major federal actions having a significant effect on the environment;”
- helping public officials make decisions that are based on understanding of environmental impacts and taking actions that protect, restore and enhance the environment; and
- ensuring that environmental information is available to public officials and citizens before decisions are made and actions are taken.

EXPERIENCE  
YOUR  
AMERICA





# Appalachian National Scenic Trail

## Delaware Water Gap National Recreation Area

### Middle Delaware National Scenic and Recreational River

National Park Service  
U.S. Department of the Interior



U.S. Army Corps of Engineers  
Philadelphia District



## Comments from Public Scoping

- Over 6,500 pieces of correspondence
- Majority of the comments expressed concern regarding the visual quality of the area, concerns for wildlife and wildlife habitat, and concerns about the health and safety of individuals living in close proximity of the proposed transmission line.
- Public also provided suggestions on alternatives including:
  - Underground lines
  - Superconductor lines
  - ACCC® (aluminum conductor composite core)
  - Smart grid
  - I-80 corridor
  - Distributed energy sites
  - Localized renewable energy
  - Refurbished line to meet energy needs

EXPERIENCE  
YOUR  
AMERICA



# Appalachian National Scenic Trail

## Delaware Water Gap National Recreation Area

### Middle Delaware National Scenic and Recreational River

National Park Service  
U.S. Department of the Interior



U.S. Army Corps of Engineers  
Philadelphia District



EXPERIENCE  
YOUR  
AMERICA

## Alternatives Development Process

*Objectives are compared to alternatives to determine what the range of reasonable alternatives are for analysis.*

- Natural Resources
- Park Operations
- Socio-economic / Community Impacts
- Scenic Resources and Viewsheds
- Visitor Experience
- Health and Safety of Visitors and Staff
- Cultural Resources
- National Register of Historic Places (NRHP) Eligibility
- Paleontological and Geological Resources







## Alternatives Development Process (cont.)

### Criteria for evaluating alternatives:

Technical feasibility  
Known and unacceptable environmental impacts  
Cost

### Process for evaluating alternative routes:

1. Presentation of technical aspects of the alternative by David Evans and Associates, Inc. (DEA), with a description of why the alternative was recommended for evaluation and potential benefits and drawbacks of the alternative.
2. Question and answer session amongst interdisciplinary team.
3. Discussion of potential environmental concerns, especially potentially major impacts.
4. Evaluation of suitability of the alternative based on criteria with recommendation to evaluate or dismiss.
5. After review of all potential alternative routes by the interdisciplinary team, a review was conducted to assess if refinement was needed.

EXPERIENCE  
YOUR  
AMERICA

# Appalachian National Scenic Trail

## Delaware Water Gap National Recreation Area

### Middle Delaware National Scenic and Recreational River

National Park Service  
U.S. Department of the Interior



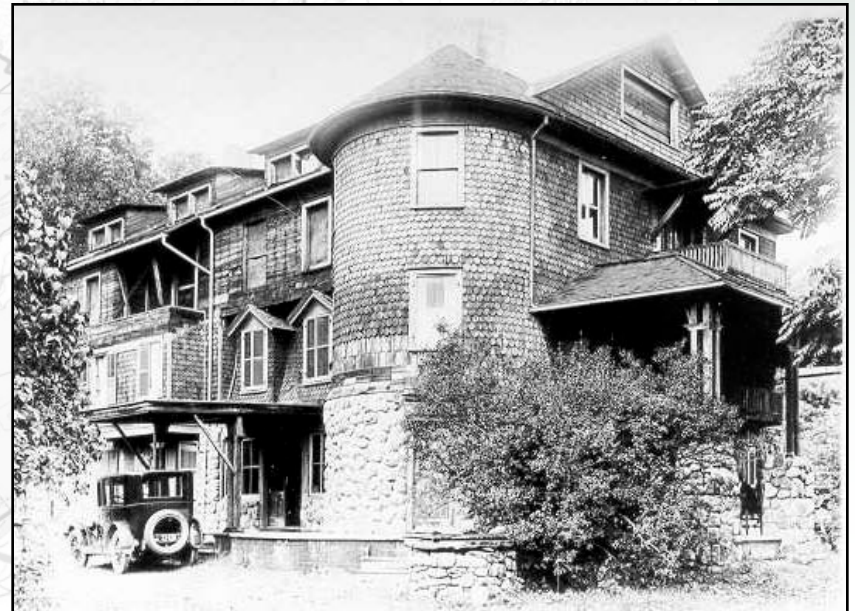
U.S. Army Corps of Engineers  
Philadelphia District



## Alternatives Considered But Dismissed

- Smart Grid
- Distributed Energy Generation Sites
- Localized Renewable Energy
- Underground 500kV
- Superconductor Lines (direct current)
- ACCC® (high temperature conductor)
- Refurbish Line to Meet Energy Needs
- Alternative Routes 8 through 12

EXPERIENCE  
YOUR  
AMERICA





# Appalachian National Scenic Trail

## Delaware Water Gap National Recreation Area

### Middle Delaware National Scenic and Recreational River

National Park Service  
U.S. Department of the Interior



U.S. Army Corps of Engineers  
Philadelphia District



## "No Action" Alternative

- Currently, a 230kV transmission line traverses DEWA and the Appalachian Trail.
- Access roads to the transmission line structures are unmaintained, and therefore overgrown.
- This alternative would continue operation and maintenance of the existing line as-is with no major changes.

Various **actions are common to all of the action alternatives** (except the Applicants' proposed alternative – Alternative 2) including the **utilization of existing ROW and river crossings, removal of the existing 230 kV transmission line, and employment of a conservation-based strategy.**



EXPERIENCE  
YOUR  
AMERICA



# Appalachian National Scenic Trail

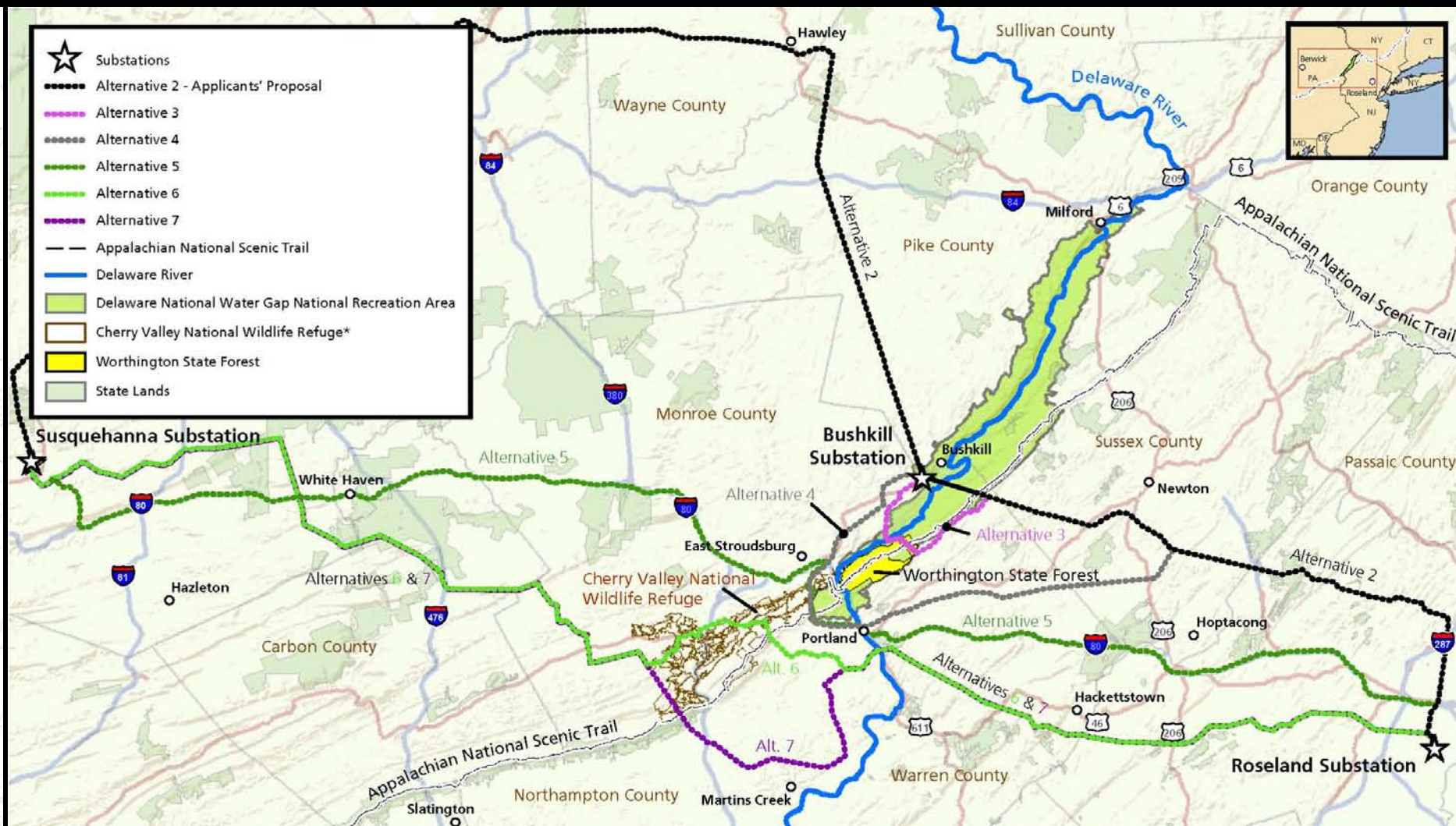
## Delaware Water Gap National Recreation Area

### Middle Delaware National Scenic and Recreational River

National Park Service  
U.S. Department of the Interior



U.S. Army Corps of Engineers  
Philadelphia District



## All Action Alternatives

\* The depiction of Cherry Valley N.W.R. is representation of the proposed boundary and does not currently indicate federal ownership





# Appalachian National Scenic Trail

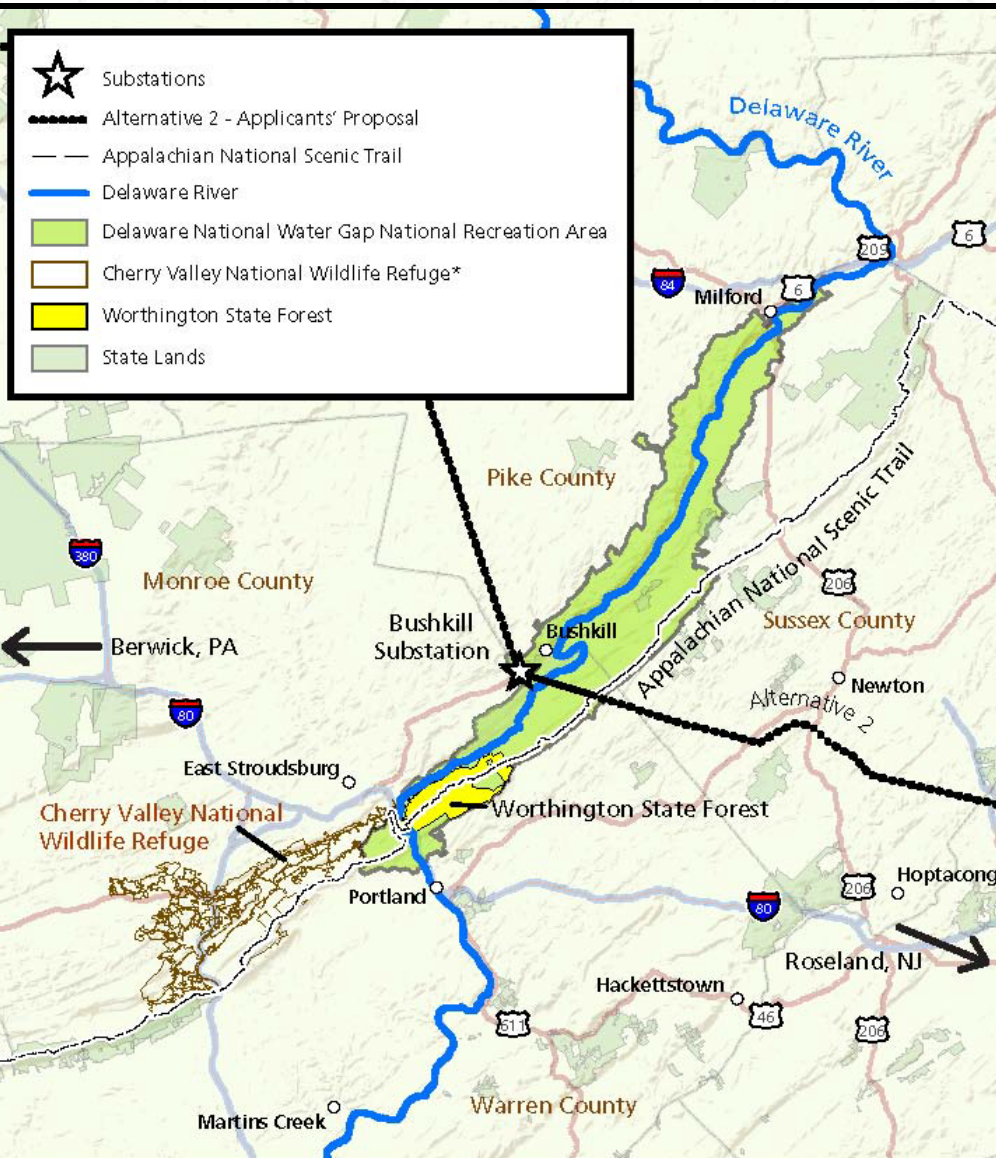
## Delaware Water Gap National Recreation Area

### Middle Delaware National Scenic and Recreational River

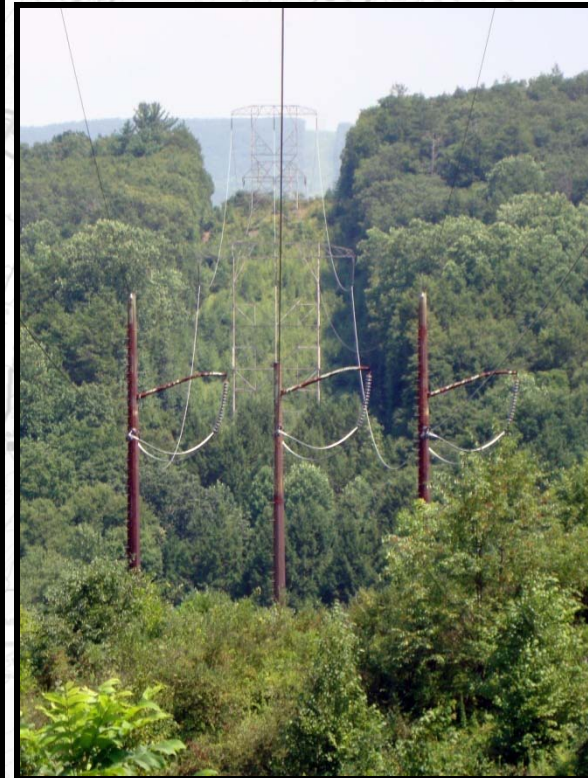
National Park Service  
U.S. Department of the Interior



U.S. Army Corps of Engineers  
Philadelphia District



## Alternative 2



Total length = 147 mi  
Distance across DEWA = 4.18 mi

\* The depiction of Cherry Valley N.W.R. is a representation of the proposed boundary and does not currently indicate federal ownership.



EXPERIENCE  
YOUR  
AMERICA



# Appalachian National Scenic Trail

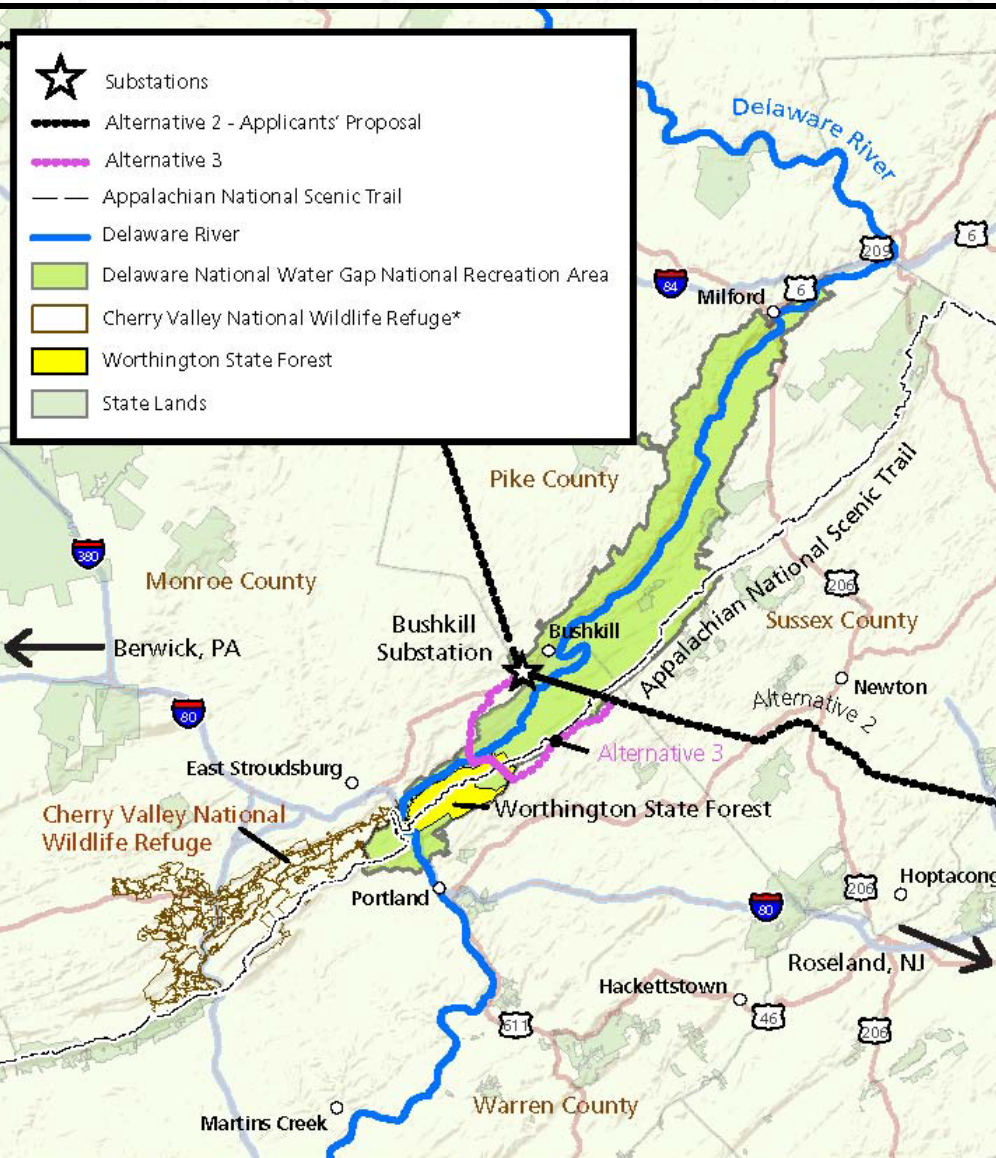
## Delaware Water Gap National Recreation Area

### Middle Delaware National Scenic and Recreational River

National Park Service  
U.S. Department of the Interior



U.S. Army Corps of Engineers  
Philadelphia District



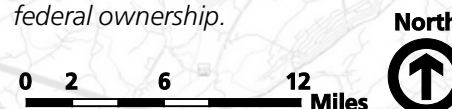
## Alternative 3



EXPERIENCE  
YOUR  
AMERICA

Total length = 157 mi  
Distance across DEWA ~ 1.5 mi

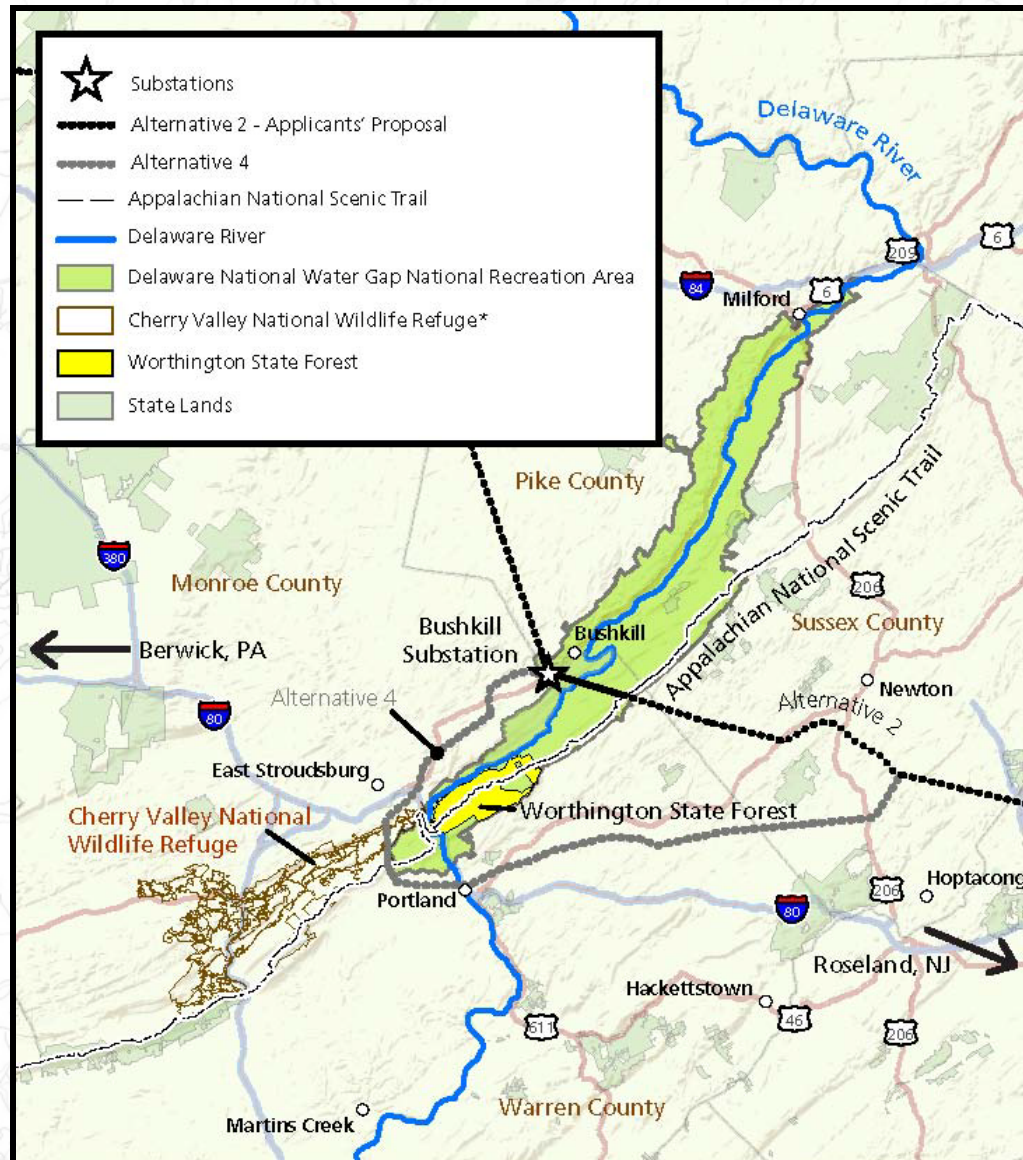
\* The depiction of Cherry Valley N.W.R. is a representation of the proposed boundary and does not currently indicate federal ownership.







U.S. Army Corps of Engineers  
Philadelphia District



## Alternative 4



EXPERIENCE  
YOUR  
AMERICA

Total length = 162 mi  
Distance across DEWA ~ 1.0 mi

\* The depiction of Cherry Valley N.W.R. is a representation of the proposed boundary and does not currently indicate federal ownership.





# Appalachian National Scenic Trail

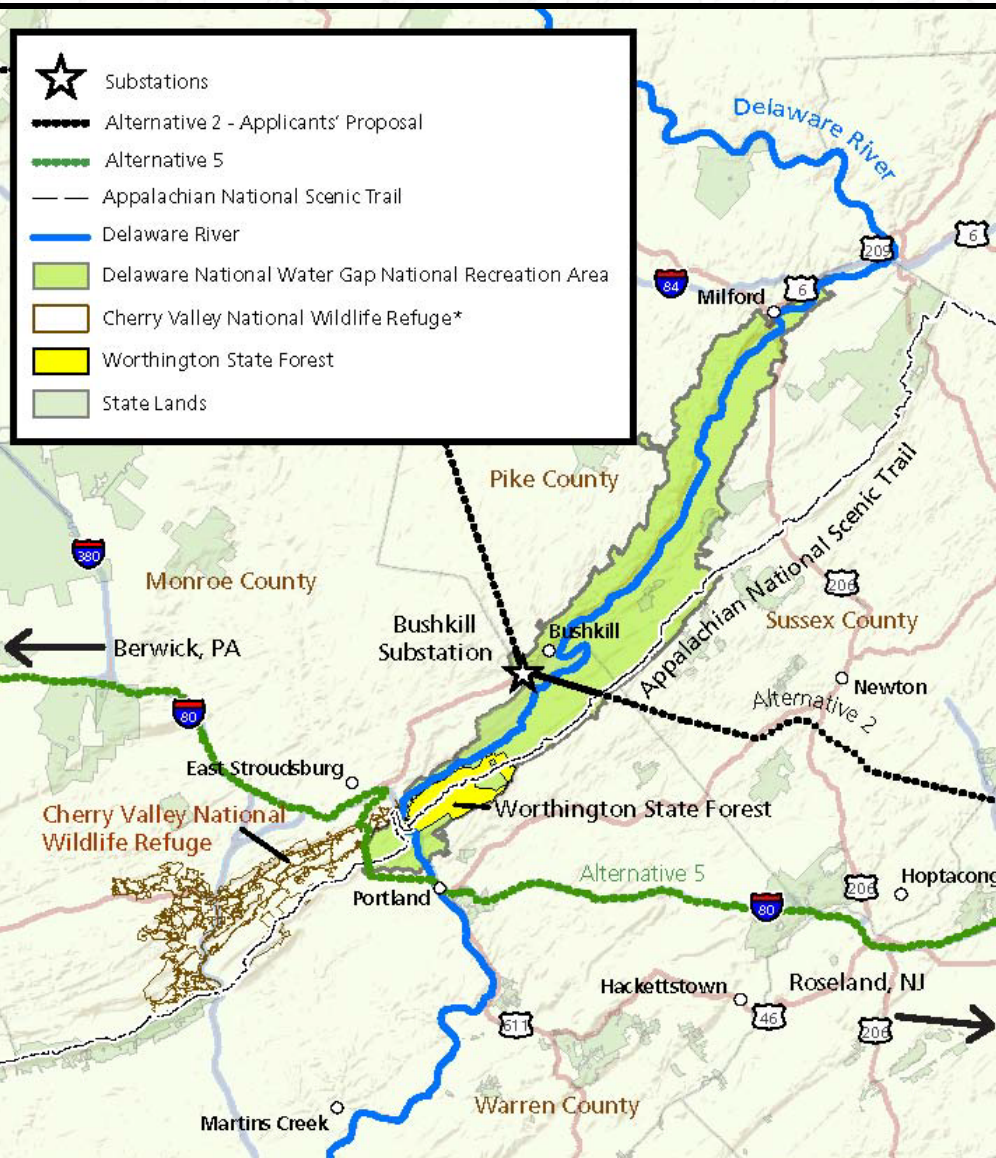
## Delaware Water Gap National Recreation Area

### Middle Delaware National Scenic and Recreational River

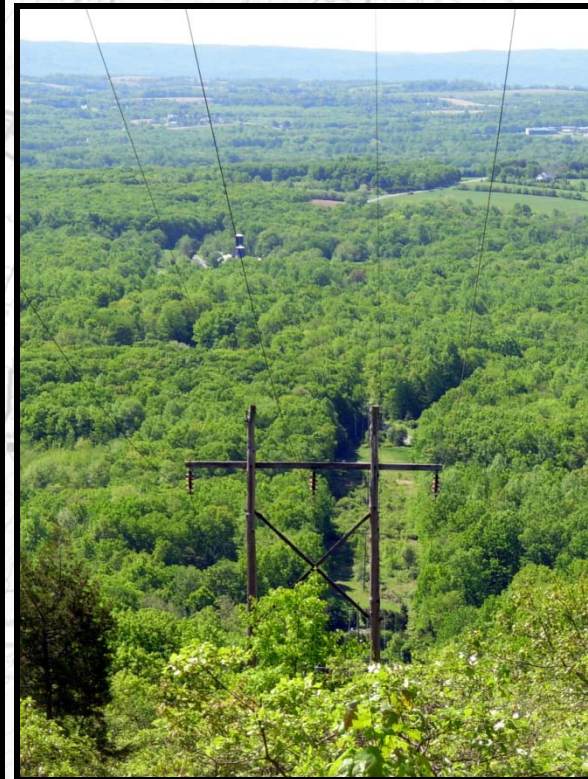
National Park Service  
U.S. Department of the Interior



U.S. Army Corps of Engineers  
Philadelphia District



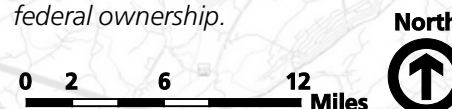
## Alternative 5



EXPERIENCE  
YOUR  
AMERICA

Total length = 110 mi  
Distance across DEWA ~ 1.0 mi

\* The depiction of Cherry Valley N.W.R. is a representation of the proposed boundary and does not currently indicate federal ownership.





# Appalachian National Scenic Trail

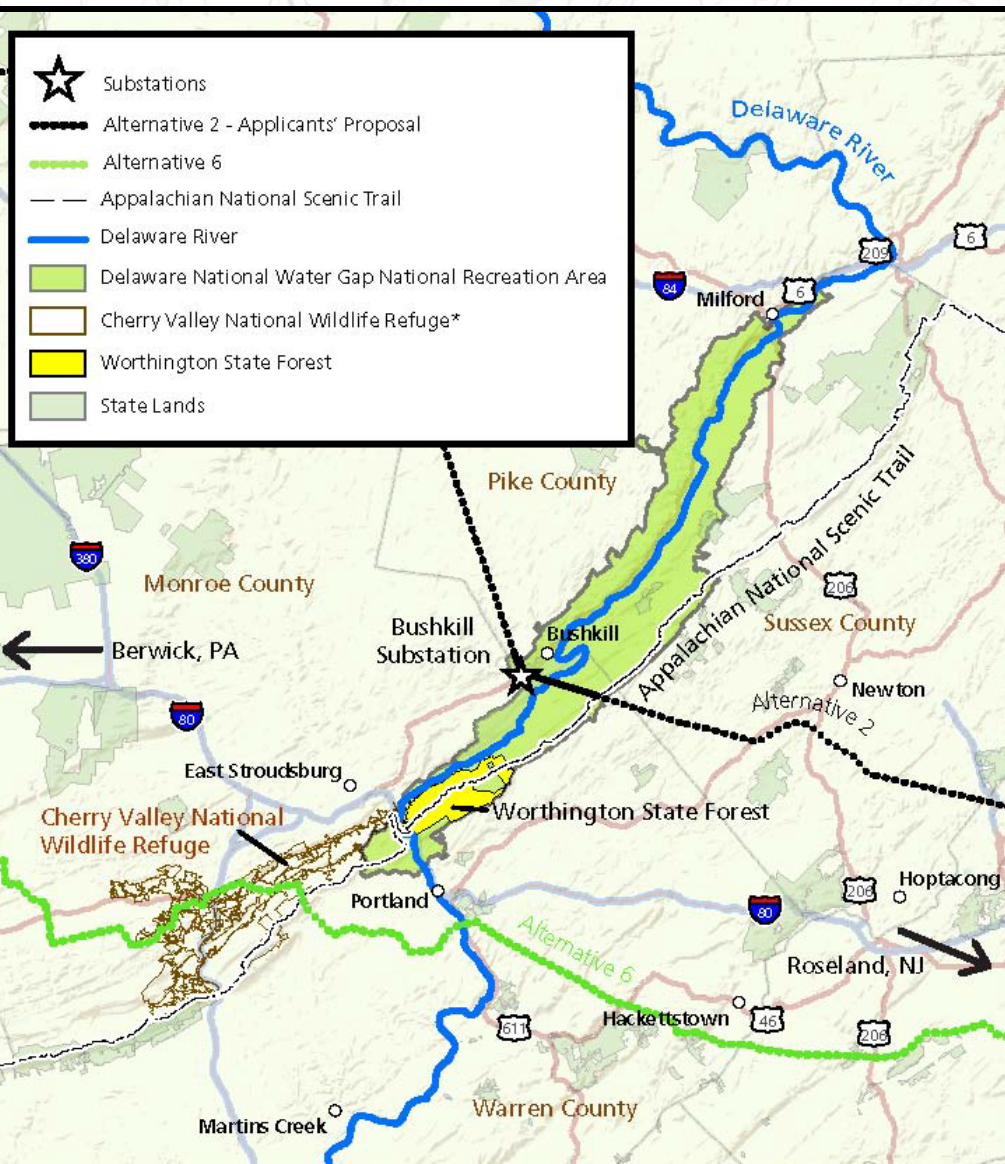
## Delaware Water Gap National Recreation Area

### Middle Delaware National Scenic and Recreational River

National Park Service  
U.S. Department of the Interior



U.S. Army Corps of Engineers  
Philadelphia District

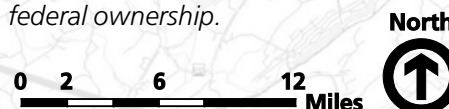


## Alternative 6



Total length = 114 mi  
Distance across DEWA = 0 mi

\* The depiction of Cherry Valley N.W.R. is a representation of the proposed boundary and does not currently indicate federal ownership.



EXPERIENCE  
YOUR  
AMERICA



# Appalachian National Scenic Trail

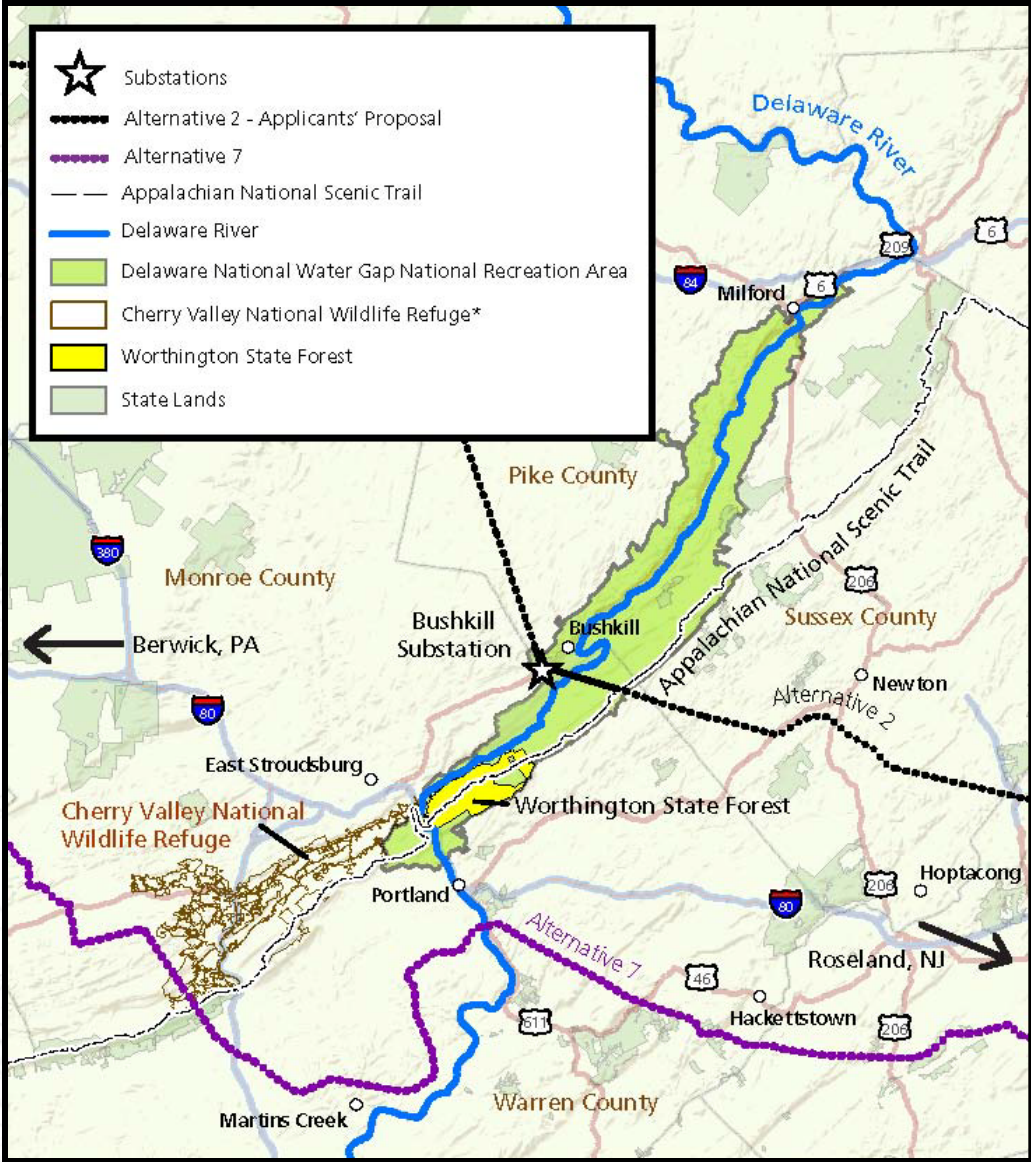
## Delaware Water Gap National Recreation Area

### Middle Delaware National Scenic and Recreational River

National Park Service  
U.S. Department of the Interior



U.S. Army Corps of Engineers  
Philadelphia District



## Alternative 7



EXPERIENCE  
YOUR  
AMERICA

Total length = 121 mi  
Distance across DEWA = 0 mi

\* The depiction of Cherry Valley N.W.R. is a representation of the proposed boundary and does not currently indicate federal ownership.





# Appalachian National Scenic Trail

## Delaware Water Gap National Recreation Area

### Middle Delaware National Scenic and Recreational River

National Park Service  
U.S. Department of the Interior



U.S. Army Corps of Engineers  
Philadelphia District



## Schedule of Planning Activities

EXPERIENCE  
YOUR  
AMERICA

### How To Participate

The planning team welcomes your comments throughout the planning process. The National Park Service is seeking public comment on the preliminary alternatives identified for the S-R Line EIS project. At this time NPS is announcing a 30-day public scoping period to solicit comments on this project. You may provide comments using any one of the following methods:

- attend the public meetings;
- comment online at <http://parkplanning.nps.gov/dewa>; or
- mail comments to the National Park Service, ATTN: DEWA PPL EIS Planning Team, DSC-P, PO Box 25287, Denver, CO 80225-0287.

Please submit comments by September 7, 2010.

Before including your personal information in your comment, you should be aware that your entire comment – including your personal identifying information – may be publicly available at any time. Although you may request in your comment that we withhold your personal information from public review, we cannot guarantee that we will be able to do so.

Dates	Planning Activity	Involvement
Summer 2010	Identify Project Alternatives	<ul style="list-style-type: none"> <li>• Read newsletter</li> <li>• Send us your ideas and comments</li> <li>• Attend the public meetings</li> </ul>
Summer 2010 – Summer 2011	Develop and Publish the Draft Environmental Impact Statement (DEIS)	<ul style="list-style-type: none"> <li>• Read draft plan</li> <li>• Send us your ideas and comments</li> <li>• Participate in public meetings and hearings</li> </ul>
Summer 2012 – Fall 2012	Develop and Publish Final Environmental Impact Statements (FEIS) and Record of Decision	<ul style="list-style-type: none"> <li>• Read the final plan, including NPS responses to substantive public comments and official letters</li> </ul>

# Appalachian National Scenic Trail

## Delaware Water Gap National Recreation Area

### Middle Delaware National Scenic and Recreational River

National Park Service  
U.S. Department of the Interior



U.S. Army Corps of Engineers  
Philadelphia District



# Questions?



EXPERIENCE  
YOUR  
AMERICA