

# Environmental Impact Statement

Appalachian National Scenic Trail  
Delaware Water Gap National Recreation Area  
Middle Delaware National Scenic and Recreational River

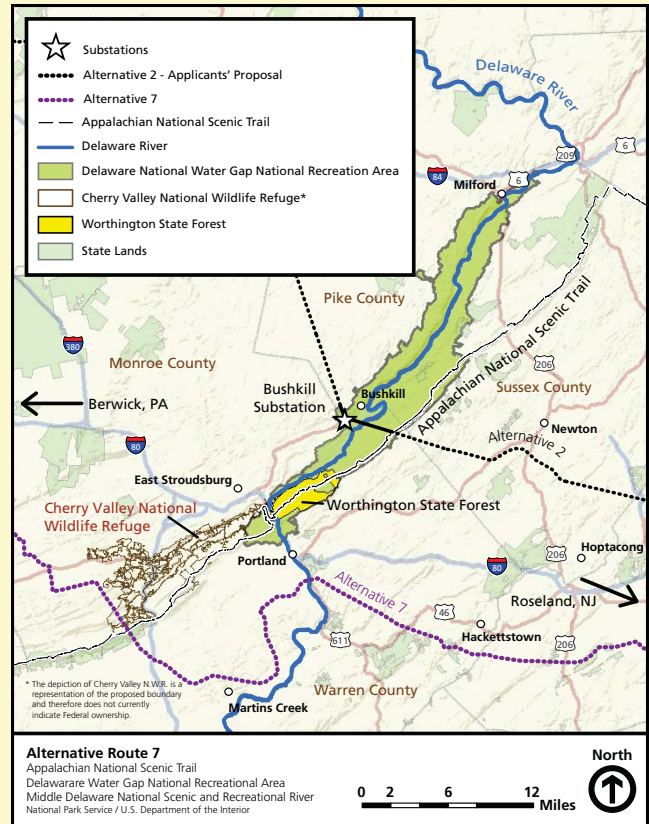
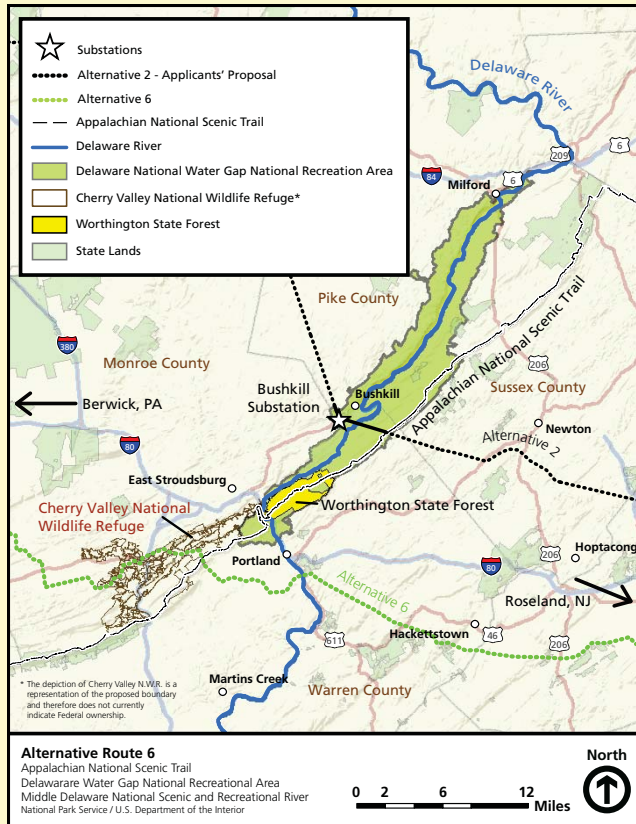
National Park Service  
U.S. Department of the Interior



U.S. Army Corps of Engineers  
Philadelphia District



## Action Alternatives 6 & 7

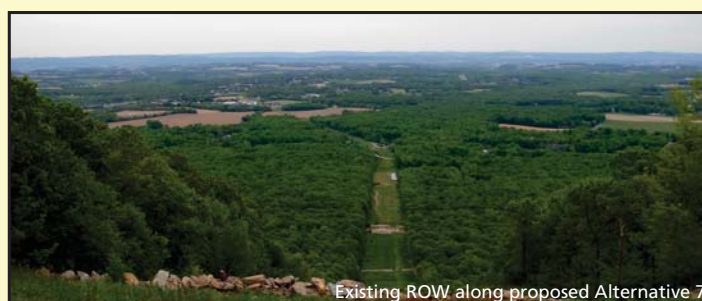


Sections of the alternative routes displayed outside of NPS lands are shown only as examples of potentially viable and feasible alternative routes that the Applicants may choose to complete the transmission of electricity between Susquehanna (Berwick, PA) and Roseland, NJ. The NPS is not dictating or directing where the Applicants can, will, or might choose to place their transmission lines outside of lands and waters of the National Park units involved.

### Alternative 6

Alternative 6 would use existing transmission line ROW south of Interstate 80 (I-80), running east to Roseland, NJ from Susquehanna substation in Berwick, PA. It would cross APPA and the Delaware River using existing ROW.

This alternative would require new ROW acquisition and vegetative clearing for widening of the existing corridor. It would also pass through boundaries of the newly designated CVNWR area.



### Alternative 7

Alternative 7 would also use existing ROW south of I-80, running east to Roseland, NJ from Susquehanna substation in Berwick, PA.

It would offer a direct route and maximize shared corridor, while using an existing river crossing. This alternative would also cross APPA lands and pass through the southern portion of the CVNWR area.