

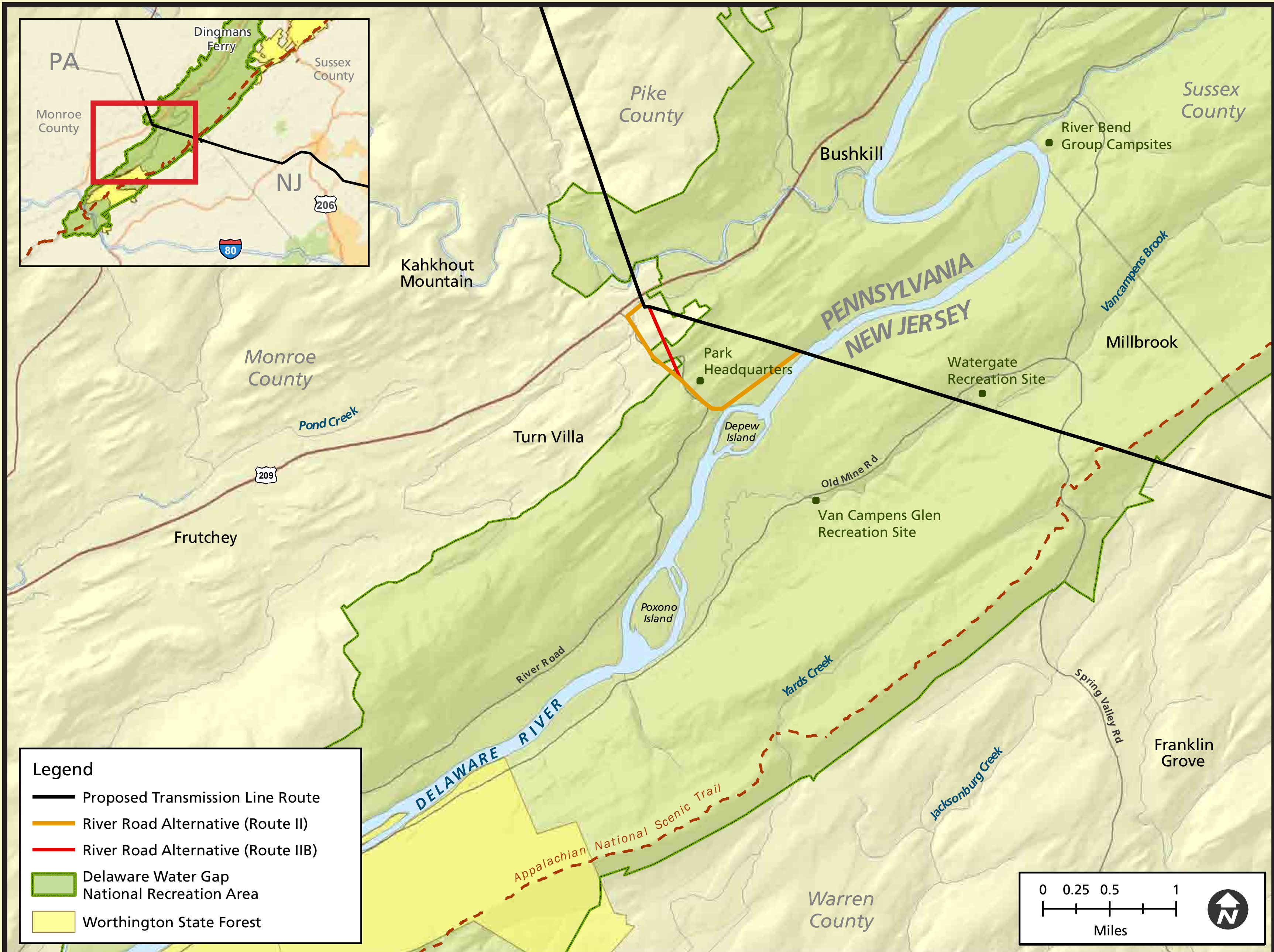
Environmental Impact Statement

Delaware Water Gap National Recreation Area
Middle Delaware National Scenic and Recreational River
Appalachian National Scenic Trail

National Park Service
U.S. Department of the Interior



Potential Alternative Routes



River Road Alternative Route
Delaware Water Gap National Scenic Area
Middle Delaware National Scenic and Recreational River
Appalachian National Scenic Trail
National Park Service / U.S. Department of the Interior

River Road Alternatives Route II and Route IIB

Route II

The total length of Alternate Route II is approximately 1.9 miles. From the Bushkill Switchyard, Route II runs southwest. At a point just northeast of River Road, it heads southeast to the Delaware River turning northeast and running by Park Headquarters, along the side of Hogback Ridge. It joins the existing 230 kV line and the proposed Susquehanna-Roseland route just before the existing line crosses the Delaware River. The Bushkill Switchyard would be relocated from its current location to the former sand pit and driving range area on the southwest intersection of Route 209 and River Road.

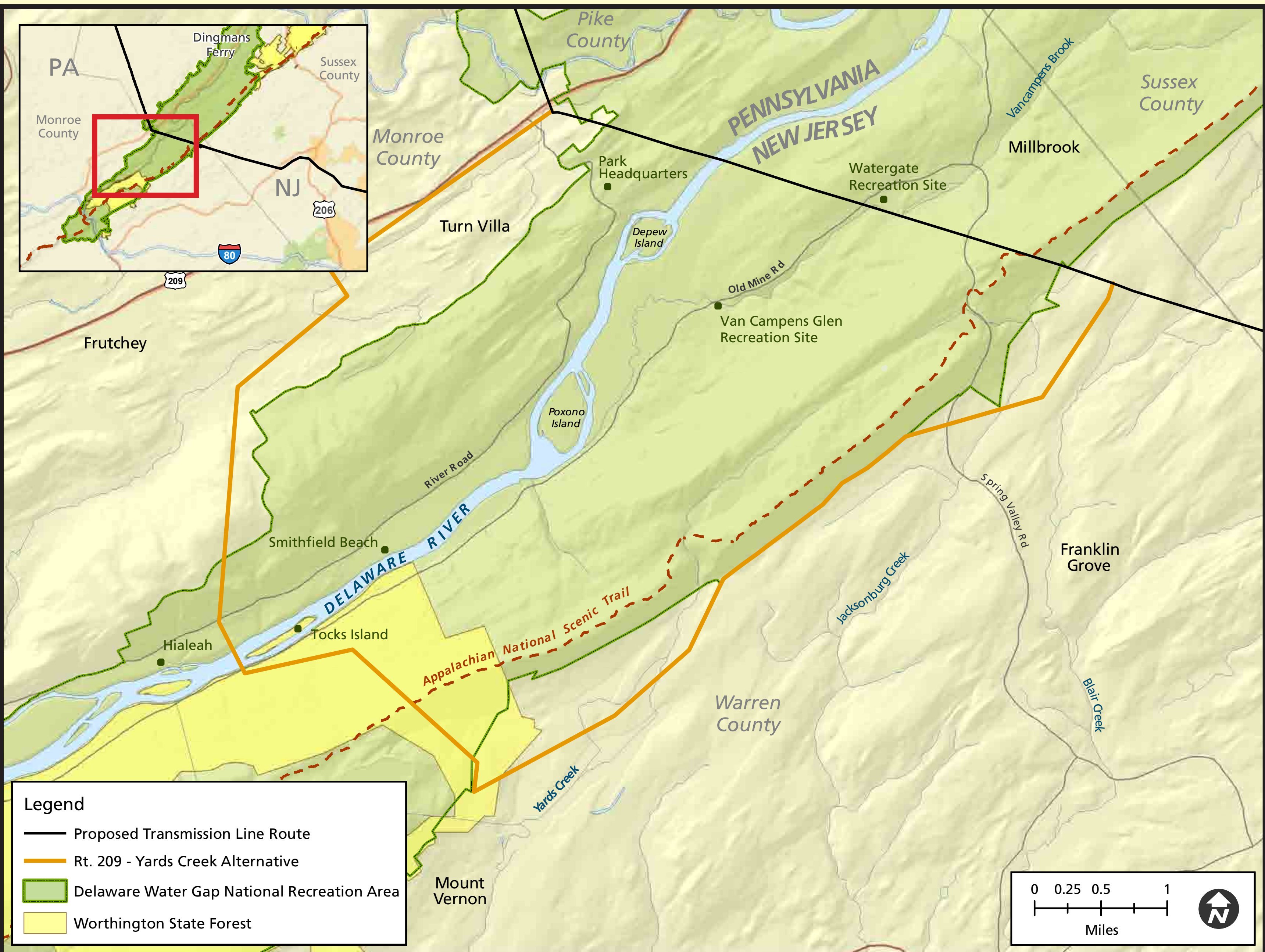
Route IIB

The total length of Alternate Route IIB is approximately 1.7 miles. From the Bushkill Switchyard, Route IIB heads east until it reaches the DEWA Maintenance Facility, adjacent to Park Headquarters. From the Maintenance Facility, Route IIB follows the same route through DEWA as Route II would. The Bushkill Switchyard would remain in its current location.

Route 209 - Yards Creek Alternative

The Route 209 - Yards Creek Alternative route traverses a total of 14.2 miles between the existing Bushkill Switchyard in Pennsylvania and the point where it would join the existing transmission line east of the No-Be-Bo-Scio Boy Scout Camp in New Jersey. The distance is 10 miles longer than the currently proposed route that follows the existing ROW between these two points and would include the following:

- Widened ROW along a total of 5.6 miles in Middle Smithfield and Smithfield
- Townships in PA and 8.6 miles in Hardwick and Blirstown Townships, NJ
- 0.7 miles through DEWA in PA and NJ
- A crossing of the Appalachian National Scenic Trail
- 2.5 miles through Worthington State Forest/Park in NJ.



Route 209 - Yards Creek Alternative Route
Delaware Water Gap National Scenic Area
Middle Delaware National Scenic and Recreational River
Appalachian National Scenic Trail
National Park Service / U.S. Department of the Interior