

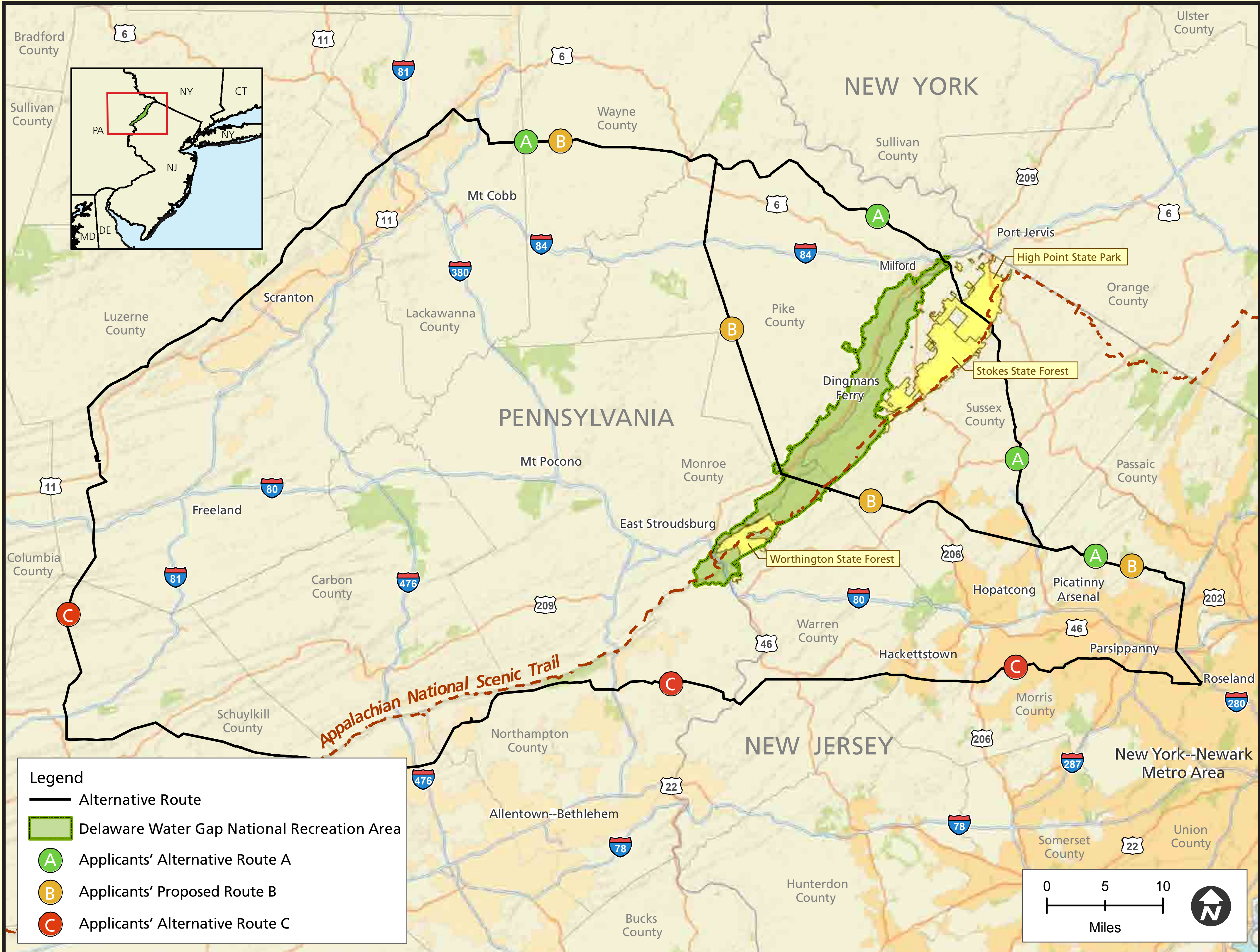
Environmental Impact Statement

Delaware Water Gap National Recreation Area
Middle Delaware National Scenic and Recreational River
Appalachian National Scenic Trail

National Park Service
U.S. Department of the Interior



Potential Alternative Routes



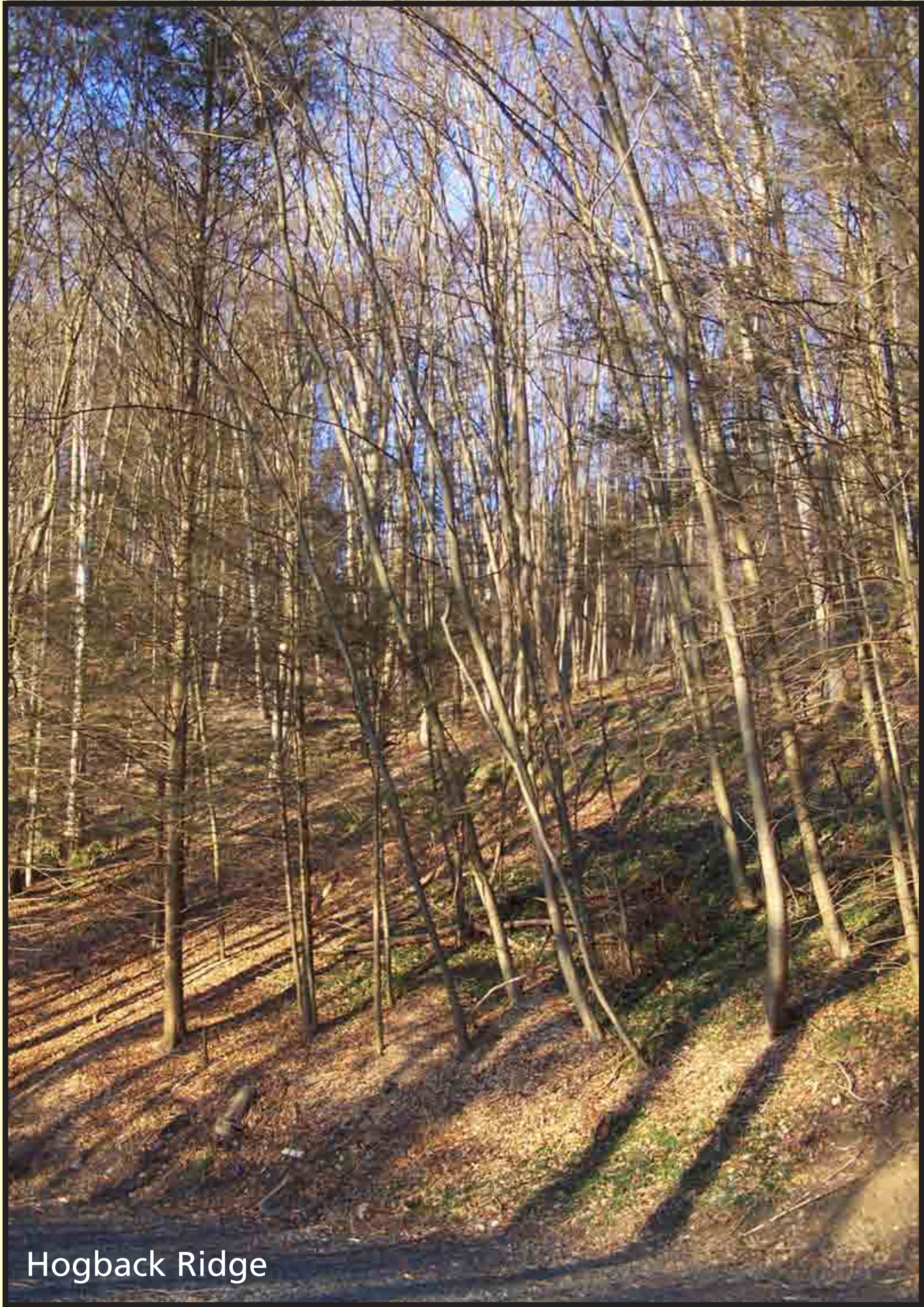
Applicants' Proposed Routes
Delaware Water Gap National Scenic Area
Middle Delaware National Scenic and Recreational River
Appalachian National Scenic Trail
National Park Service / U.S. Department of the Interior

Developing Alternatives

The identification of site and resource specific mitigation, as a result of the proposed action's potential impacts to park resources, is essential in the development of alternatives for this Environmental Impact Statement.

As such, strategies will be developed to mitigate direct impacts including, but not limited to, stream and wetland crossings, trail closures, and vegetation removal.

Mitigation will also be included as part of the development of an overall conservation strategy for the Upper and Middle Delaware River region.



- Elements of Alternatives:**
- *Routes*
 - *Configurations*
 - *Conductors*
 - *Construction technique*
 - *Single circuit vs. double circuit*
 - *Access roads*
 - *Crane pads and staging areas*
 - *Maintenance*
 - *ROW width*

A Conservation Based strategy will assure the protection of sustainable land and water ecosystems through the identification of priority resources and the implementation of specific stewardship initiatives.

The National Park Service would work together with partners to prioritize significant cultural, recreational, scenic and natural resources and would identify components needed to protect, maintain and enhance these resources through stewardship and restoration.