

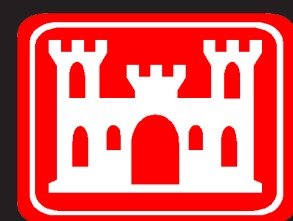
Environmental Impact Statement

Appalachian National Scenic Trail
Delaware Water Gap National Recreation Area
Middle Delaware National Scenic and Recreational River

National Park Service
U.S. Department of the Interior

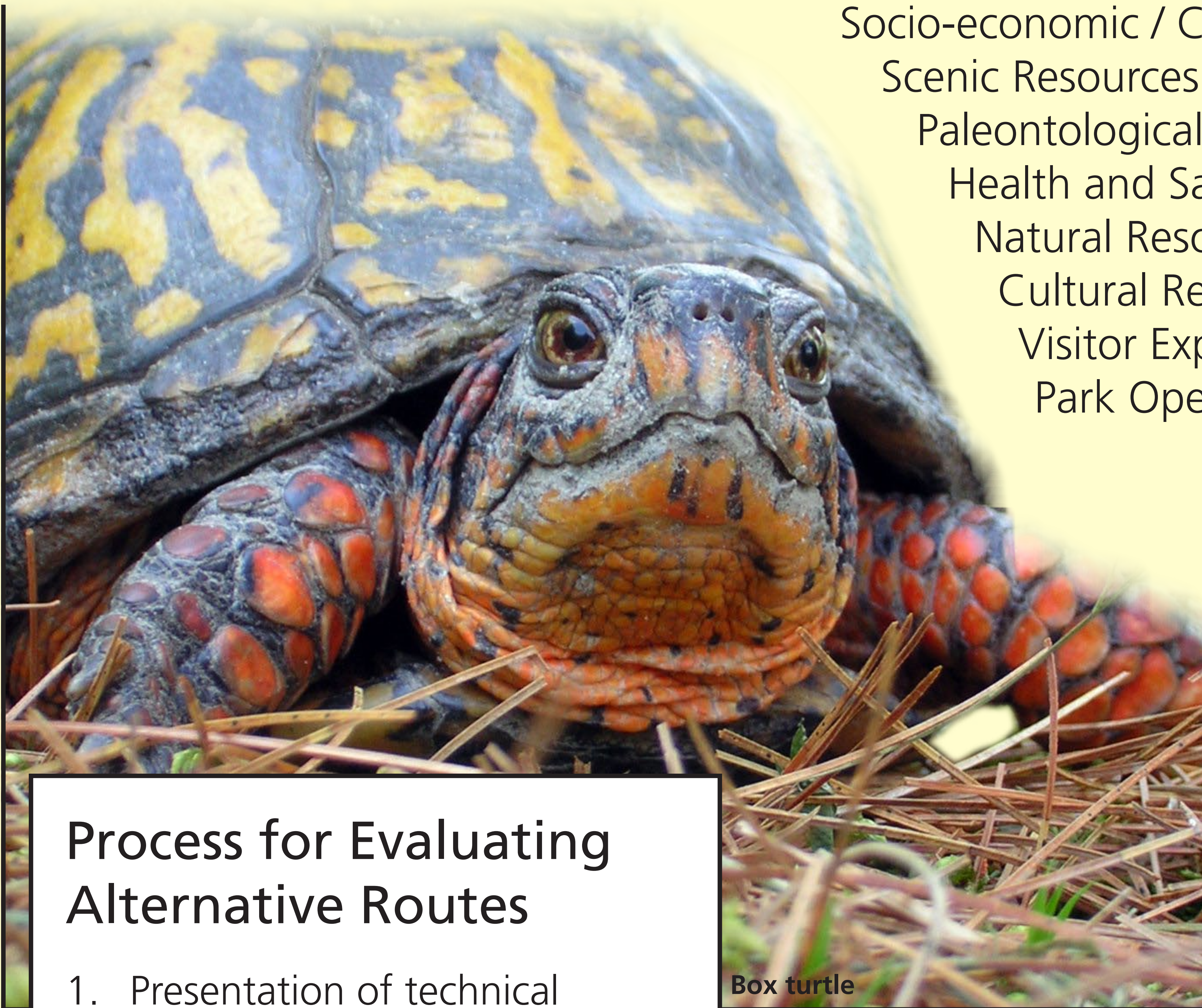


U.S. Army Corps of Engineers
Philadelphia District



Development of Alternatives

Issues and Impacts Involved in the Alternative Evaluation Process



Box turtle

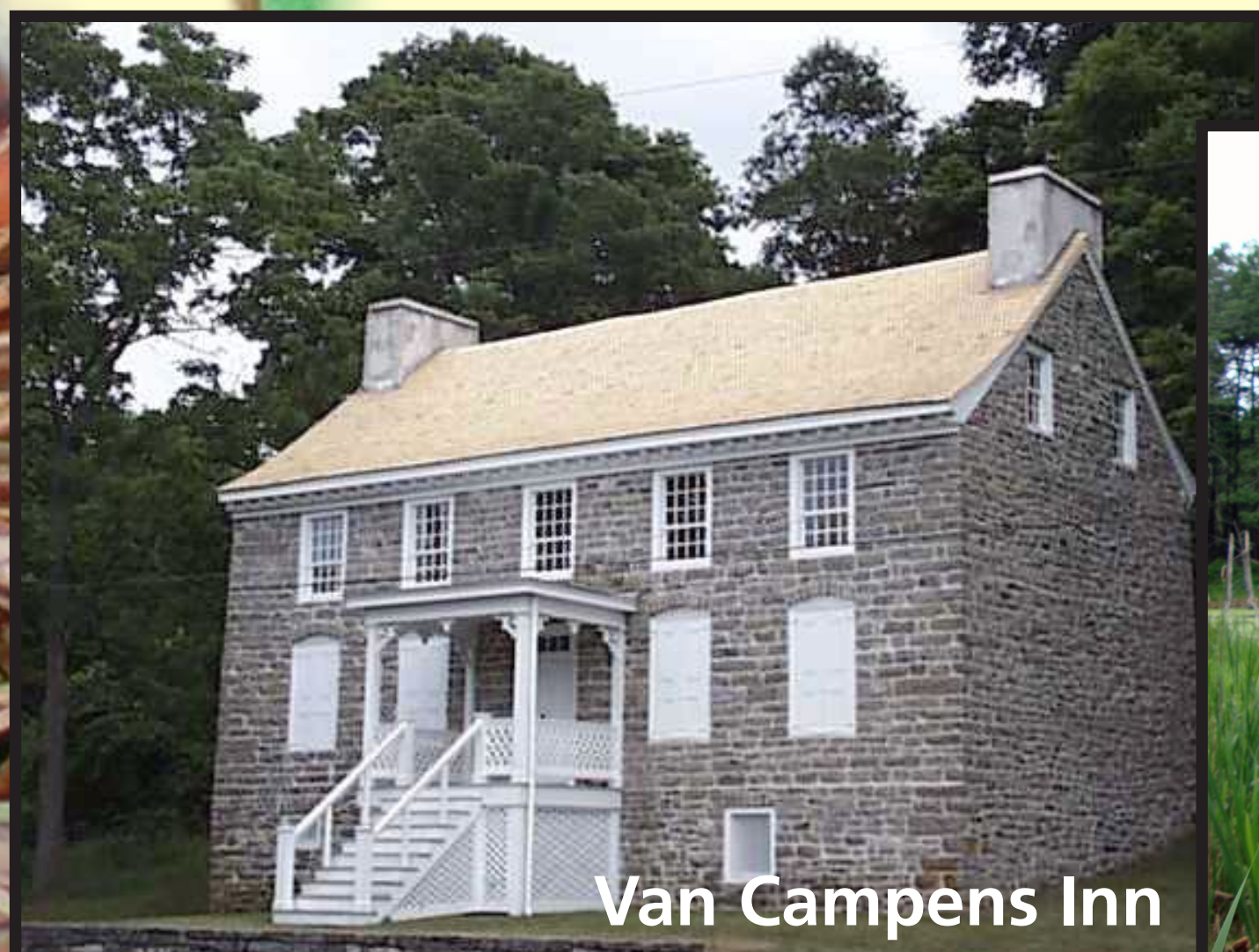
- Socio-economic / Community Impacts
- Scenic Resources and Viewsheds
- Paleontological and Geological Resources
- Health and Safety of Visitors and Staff
- Natural Resources
- Cultural Resources
- Visitor Experience
- Park Operations

Criteria for Alternatives Evaluation Process

- Technical feasibility
- Environmental impacts
- Cost

Process for Evaluating Alternative Routes

1. Presentation of technical aspects of the alternative by David Evans & Associates, Inc. (DEA), with a description of why the alternative was recommended for evaluation and potential benefits and drawbacks of the alternative.
2. Question and answer session amongst interdisciplinary team.
3. Discussion of potential environmental concerns, especially potentially major impacts.
4. Evaluation of suitability of the alternative based on criteria with recommendation to evaluate or dismiss.
5. After review of all potential alternative routes by the interdisciplinary team, a review was conducted to assess if refinement was needed.



Van Campens Inn



Cat tail

Alternatives Considered But Dismissed

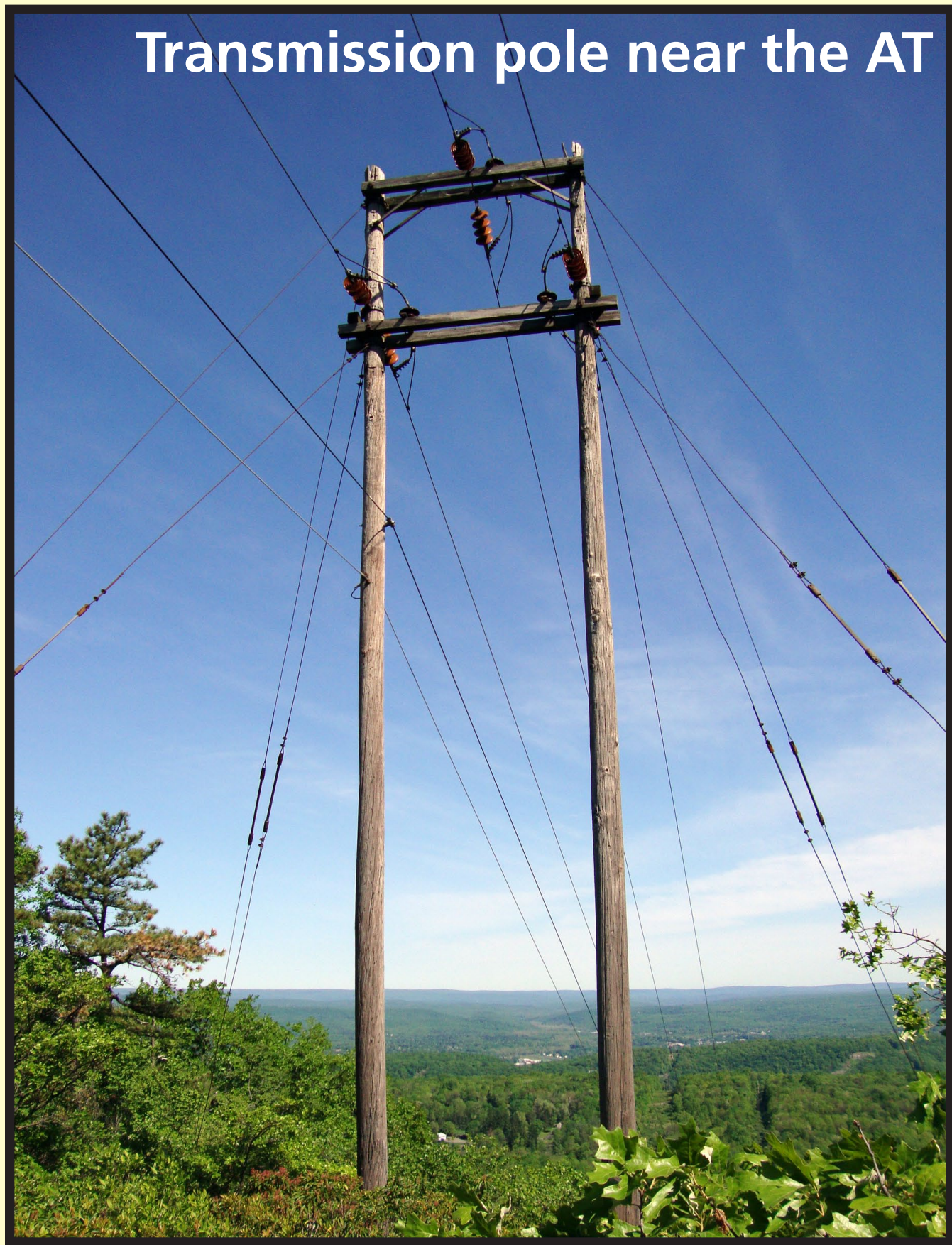
Require New Tower Structures
ACCC® conductor (aluminum conductor composite core)
Refurbish the existing 230 kV line to meet energy needs

High Cost
Underground 500kV transmission line
Superconductor lines (direct current)

Do Not Meet Technical Reliability Requirements
Smart grid
Distributed energy generation sites
Localized renewable energy sources

Unacceptable Adverse Impacts
Alternative 8
Alternative 9
Alternative 10

Redundant Alternatives
Alternative 11
Alternative 12



Transmission pole near the AT