

## **ATTACHMENT A**

---

### **FIGURES**

*This page intentionally left blank*

## FIGURES

---

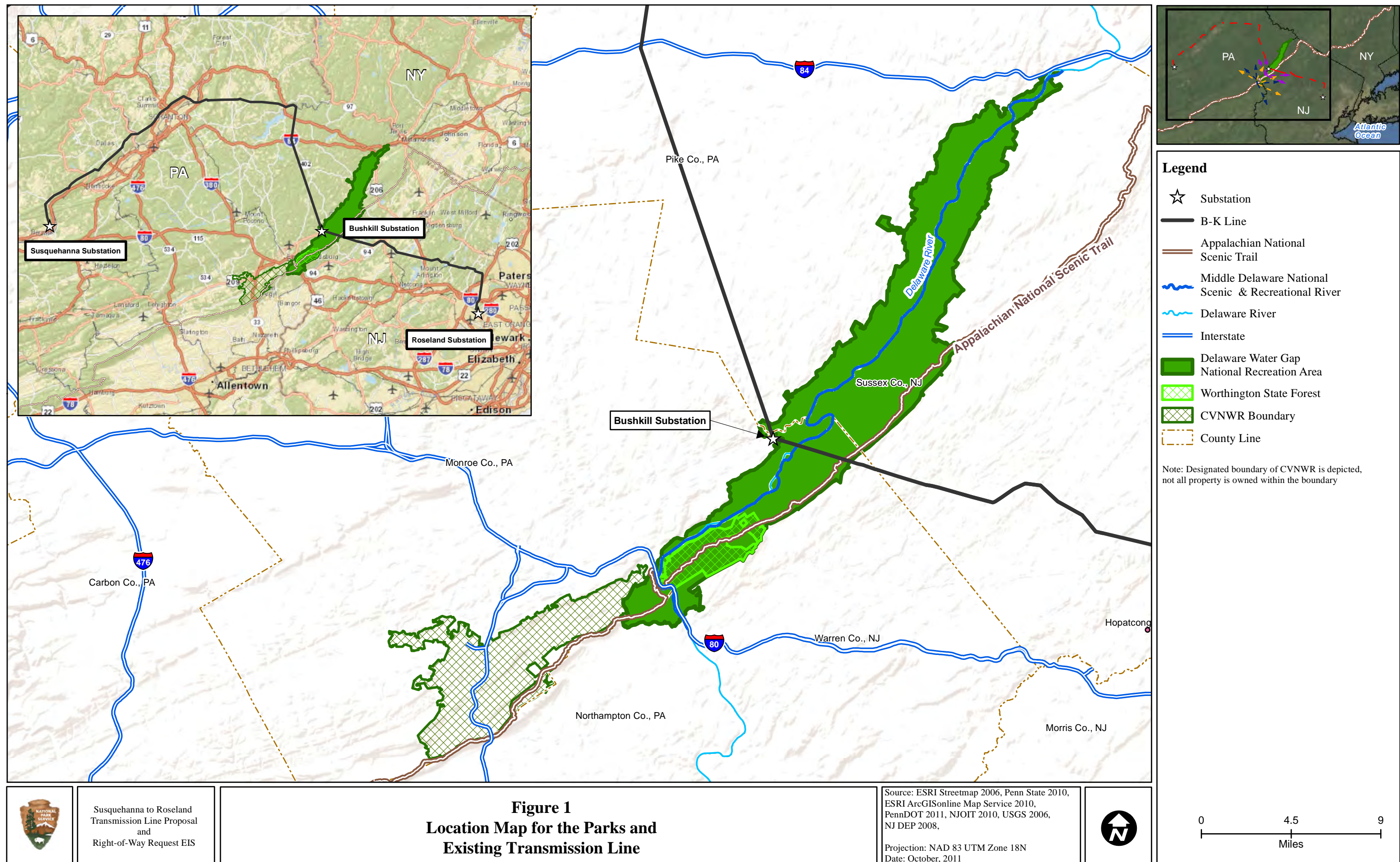
- Figure 1: Location Map for the Parks and Existing Transmission Line
- Figure 2: Alternatives within the Study Area
- Figure 3: Alternative 1 and 2 Wetlands in Pennsylvania
- Figure 4: Alternative 1 and 2 Wetlands in New Jersey
- Figure 5: Alternative 2b Wetlands in Pennsylvania
- Figure 6: Alternative 2b Wetlands in New Jersey
- Figure 7: Alternative 3 Wetlands
- Figure 8: Alternative 4/5 Wetlands
- Figure 9: Alternative 1 and 2 Floodplains in Pennsylvania
- Figure 10: Alternative 1 and 2 Floodplains in New Jersey
- Figure 11: Alternative 2b Floodplains in Pennsylvania
- Figure 12: Alternative 2b Floodplains in New Jersey
- Figure 13: Alternative 3 Floodplains
- Figure 14: Alternative 4/5 Floodplains
- Figure 15: Impacts to Arnott Fen, Alternative 2
- Figure 16: Impacts to Hogback Ridge Wetland, Alternative 2
- Figure 17: Impacts to Van Campen Wetland Complex, Alternative 2
- Figure 18: Impacts to Wetland BB, Alternative 2
- Figure 19: Impacts to Wetland CC, Alternative 2
- Figure 20: Impacts to Wetland 42, Alternative 2
- Figure 21: Impacts to Wetland 45, Alternative 2
- Figure 22: Impacts to Wetland 46, Alternative 2
- Figure 23: Impacts to Wetland 47, Alternative 2
- Figure 24: Watergate and Van Campen Restoration – Proposed Mitigation Project
- Figure 25: Cutoff Road Dam, Van Campen Restoration – Proposed Mitigation Project
- Figure 26: Miller Wetland Restoration – Proposed Mitigation Project
- Figure 27: Peters Valley Culvert and Wetland Restoration– Proposed Mitigation Project
- Figure 28: Peters Valley Culvert Replacement Typical Detail – Proposed Mitigation Project
- Figure 29: Peters Mill Pond Wetland Restoration and Dam Removal – Proposed Mitigation Project
- Figure 30: Peters Valley NJ Route 615 Herpetofauna Connectivity – Proposed Mitigation Project
- Figure 31: UNT to Little Flat Brook Wetland Restoration – Proposed Mitigation Project
- Figure 32: Camp Kittatinny Pond Wetland Restoration – Proposed Mitigation Project
- Figure 33: Camp Kittatinny Pond Wetland Restoration – Proposed Mitigation Project
- Figure 34: Birchenough Pond Wetland Restoration – Proposed Mitigation Project
- Figure 35: Sussex Vo-Tech Pond Wetland Restoration – Proposed Mitigation Project

Figure 36: Blaufarb Pond Wetland Restoration – Proposed Mitigation Project

Figure 37: Community Drive/Arnott Fen Road Wetland Restoration – Proposed Mitigation Project

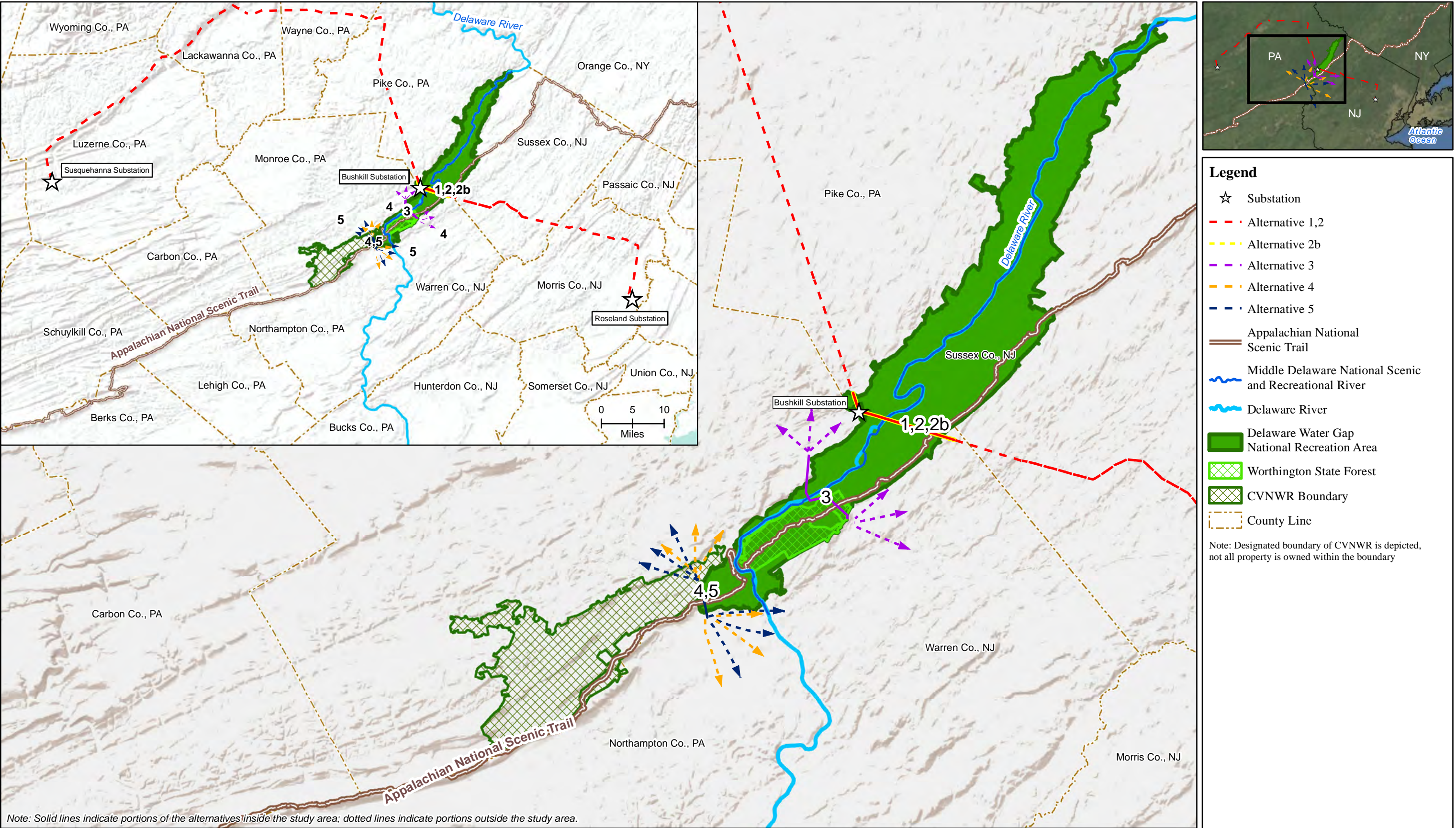
Figure 38: Invasive Plant Species Removal – Proposed Mitigation Project











**Figure 2**  
**Alternatives within the Study Area**



Susquehanna to Roseland  
Transmission Line Proposal  
and  
Right-of-Way Request EIS

Source: ESRI Streetmap 2006, Penn State 2010,  
ESRI ArcGISonline Map Service 2010,  
PennDOT 2011, NJOIT 2010, USGS 2006,  
NJ DEP 2008,

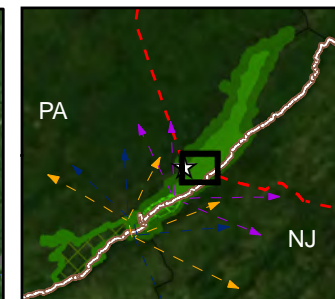
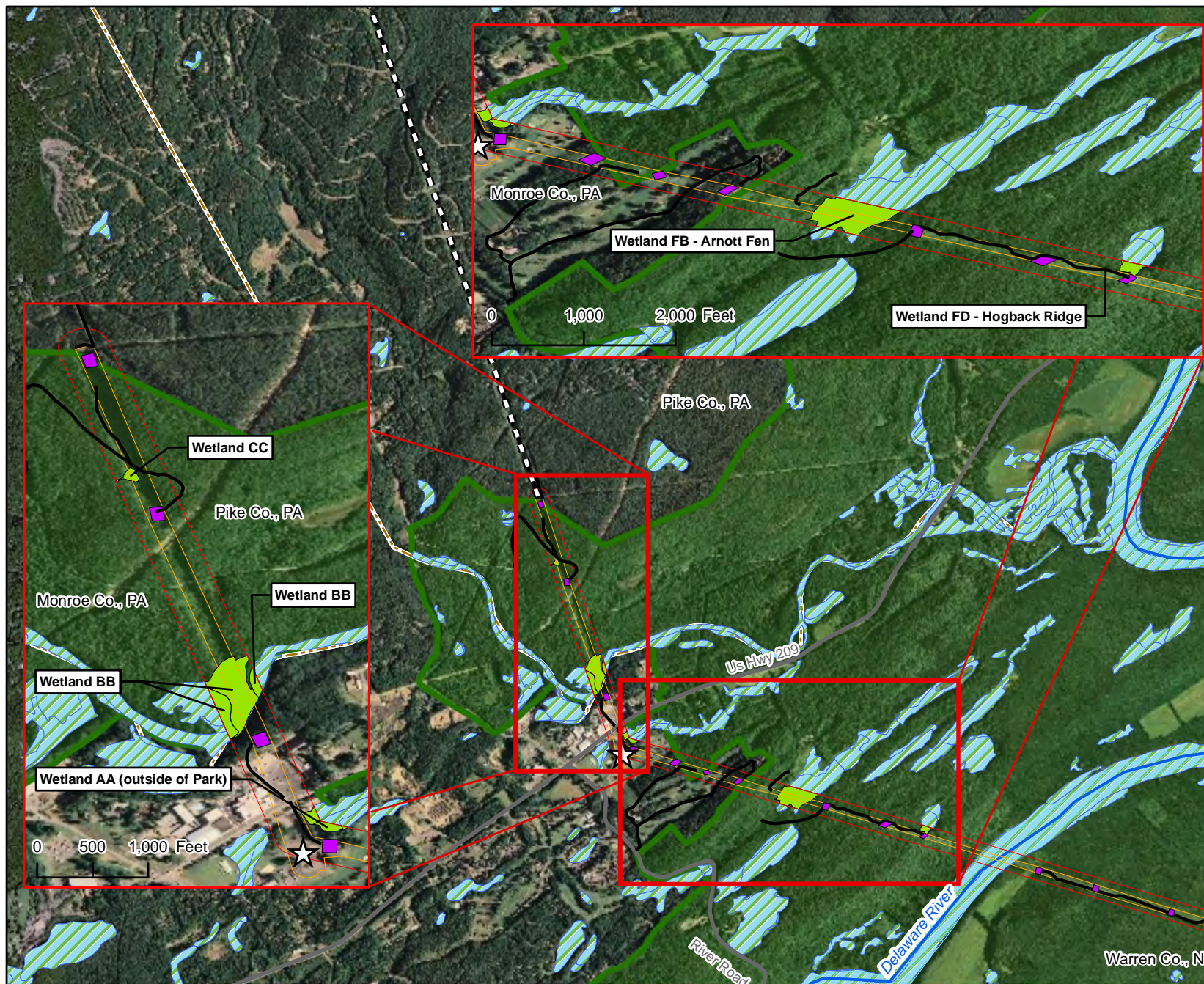
Projection: NAD 83 UTM Zone 18N  
Date: October, 2011



0 4 8  
Miles







### Legend

- ☆ Substation
- Crane Pad/ Tower Location
- ≡≡ Outside Study Area
- Existing ROW in Study Area
- 350 ft Corridor
- Delaware River
- Proposed Access Road
- Road
- Delaware Water Gap
- National Recreation Area
- Wetlands within 350ft buffer
- Wetlands
- County Line



Susquehanna to Roseland  
Transmission Line Proposal  
and  
Right-of-Way Request EIS

**Figure 3**  
**Alternatives 1 and 2 Wetlands in Pennsylvania**

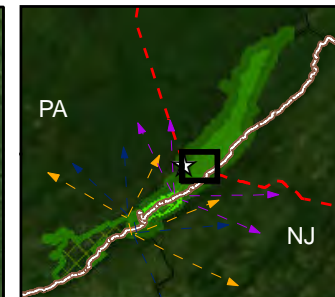
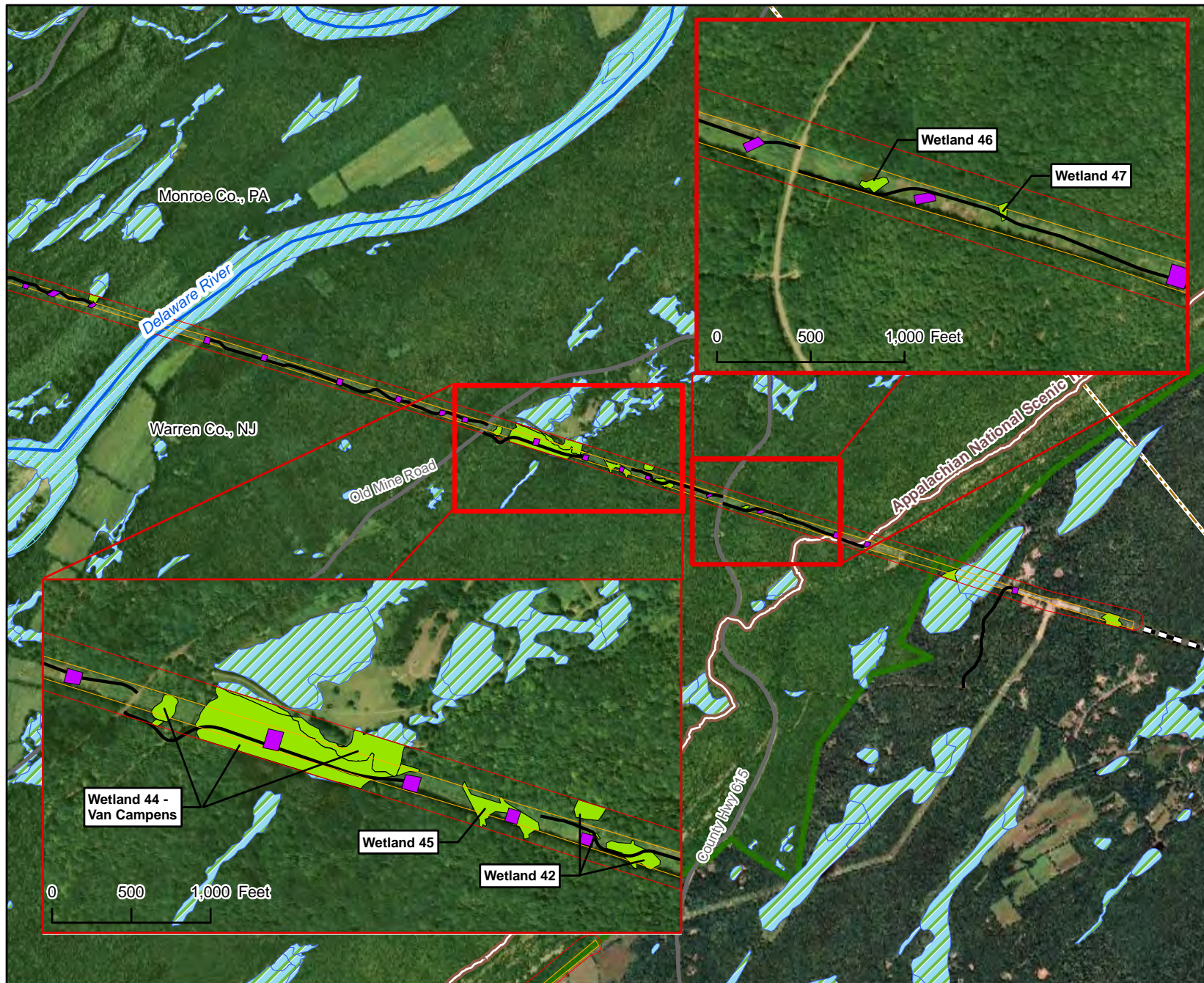
Source: ESRI Streetmap 2006, Penn State 2010,  
ESRI ArcGISonline Map Service 2010,  
PennDOT 2011, USGS 2006,  
NJ DEP 2008, NWI 1977

Projection: NAD 83 UTM Zone 18N  
Date: June 2012



0 1,250 2,500  
Feet





#### Legend

- ☆ Substation
- Crane Pad/ Tower Location
- == Outside Study Area
- Existing ROW in Study Area
- 350 ft Corridor
- Appalachian National Scenic Trail
- Delaware River
- Proposed Access Road
- Road
- Delaware Water Gap National Recreation Area
- Wetlands within 350ft buffer
- Wetlands
- County Line



Susquehanna to Roseland  
Transmission Line Proposal  
and  
Right-of-Way Request EIS

**Figure 4**  
**Alternatives 1 and 2 Wetlands in New Jersey**

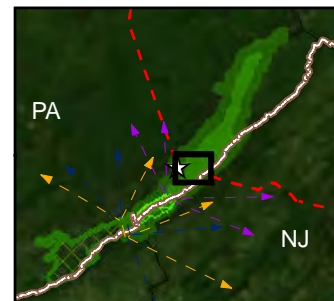
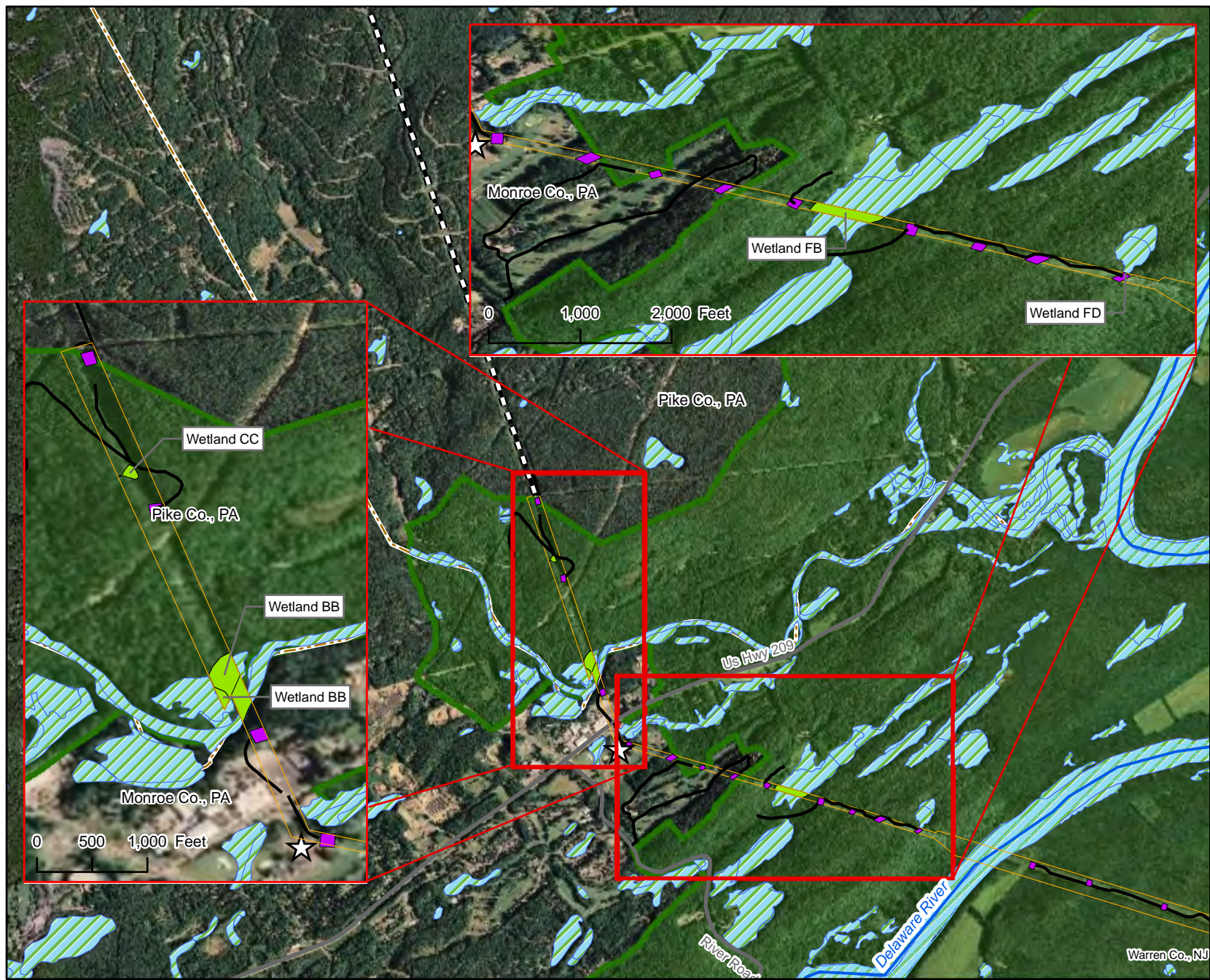
Source: ESRI Streetmap 2006, Penn State 2010,  
ESRI ArcGISonline Map Service 2010,  
PennDOT 2011, USGS 2006,  
NJ DEP 2008, NWI 1977

Projection: NAD 83 UTM Zone 18N  
Date: June 2012



0 1,250 2,500  
Feet





### Legend

- ☆ Substation
- Crane Pad/ Tower Location
- = = Outside Study Area
- Alternative 2b Corridor
- Appalachian National Scenic Trail
- Delaware River
- Proposed Access Road
- Road
- Delaware Water Gap National Recreation Area
- Wetlands in Alternative 2b Corridor
- Wetlands
- County Line



Susquehanna to Roseland  
Transmission Line Proposal  
and  
Right-of-Way Request EIS

**Figure 5**  
**Alternative 2b Wetlands in Pennsylvania**

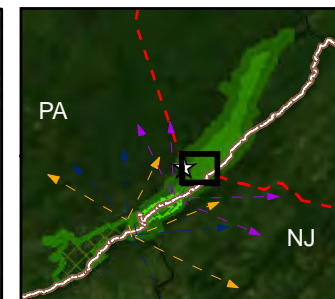
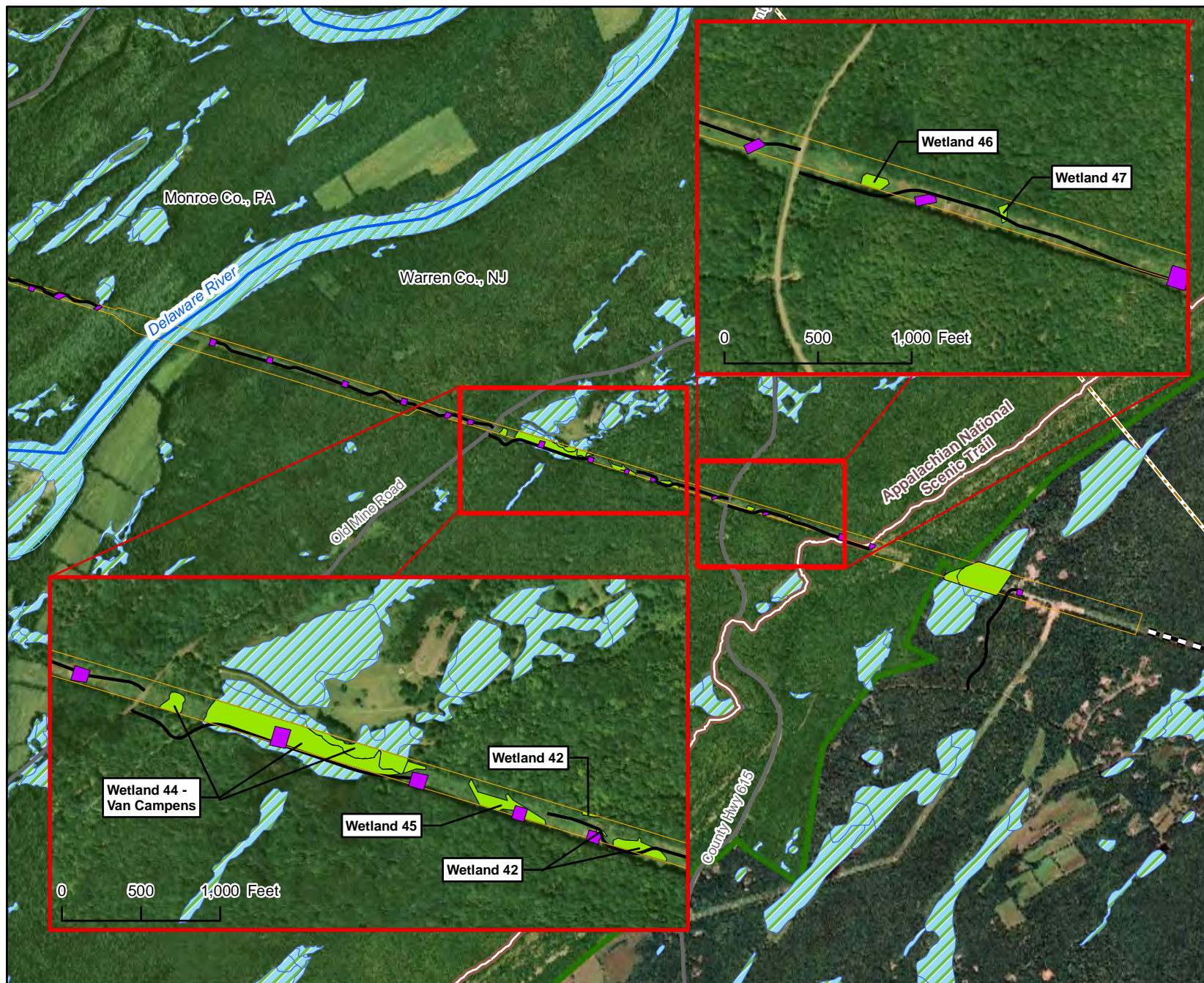
Source: ESRI Streetmap 2006, Penn State 2010,  
ESRI ArcGISonline Map Service 2010,  
PennDOT 2011, USGS 2006,  
NJ DEP 2008, NWI 1977

Projection: NAD 83 UTM Zone 18N  
Date: June 2012



0 1,250 2,500  
Feet





### Legend

- ☆ Substation
- Crane Pad/ Tower Location
- - - Outside Study Area
- Alternative 2b Corridor
- Appalachian National Scenic Trail
- Delaware River
- Proposed Access Road
- Road
- Delaware Water Gap National Recreation Area
- Wetlands in Alternative 2b Corridor
- Wetlands
- - - County Line



Susquehanna to Roseland  
Transmission Line Proposal  
and  
Right-of-Way Request EIS

**Figure 6**  
**Alternative 2b Wetlands in New Jersey**

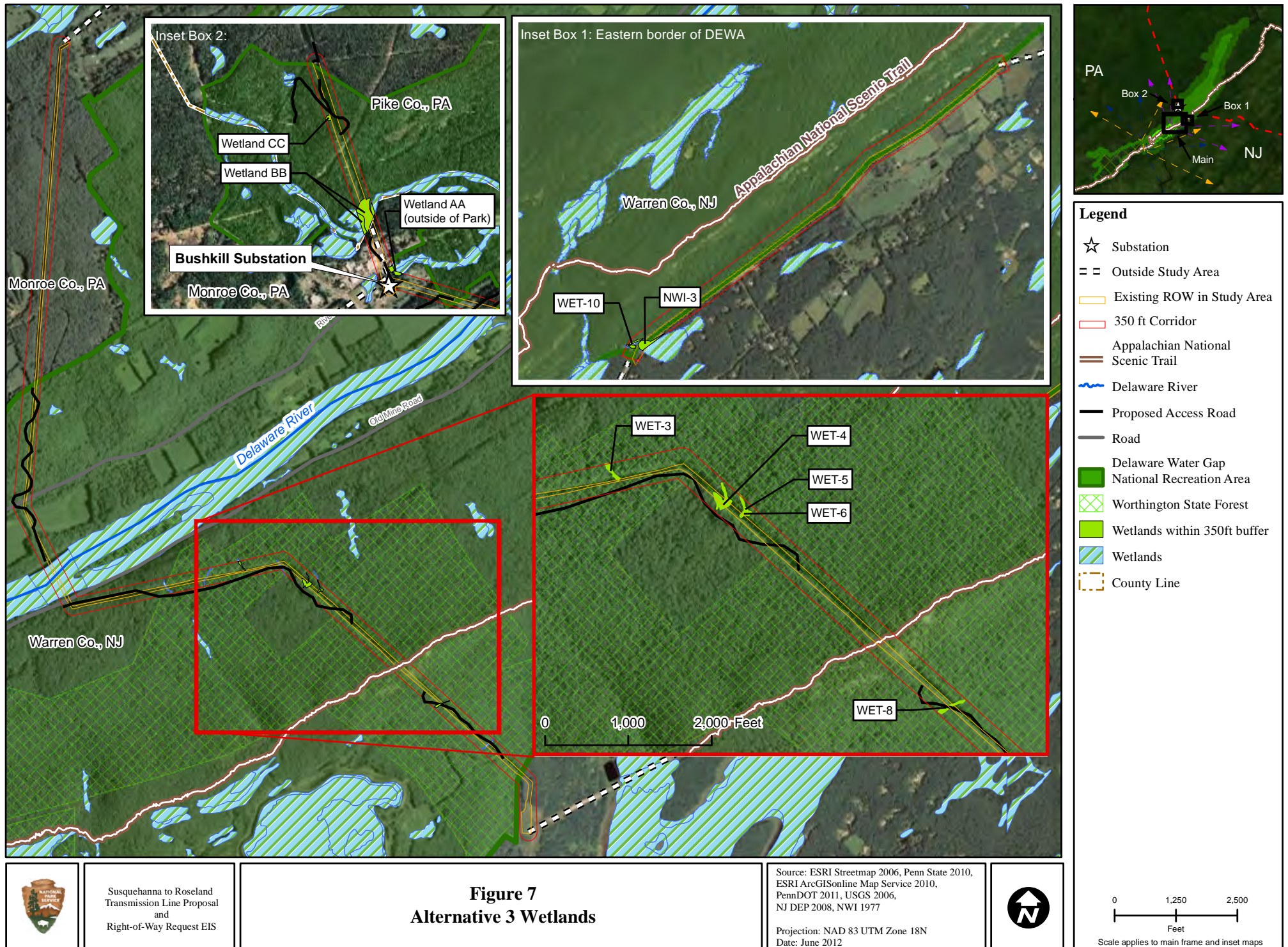
Source: ESRI Streetmap 2006, Penn State 2010,  
ESRI ArcGISonline Map Service 2010,  
PennDOT 2011, USGS 2006,  
NJ DEP 2008, NWI 1977

Projection: NAD 83 UTM Zone 18N  
Date: June 2012

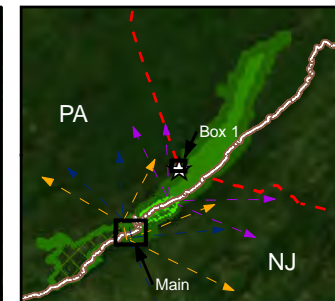
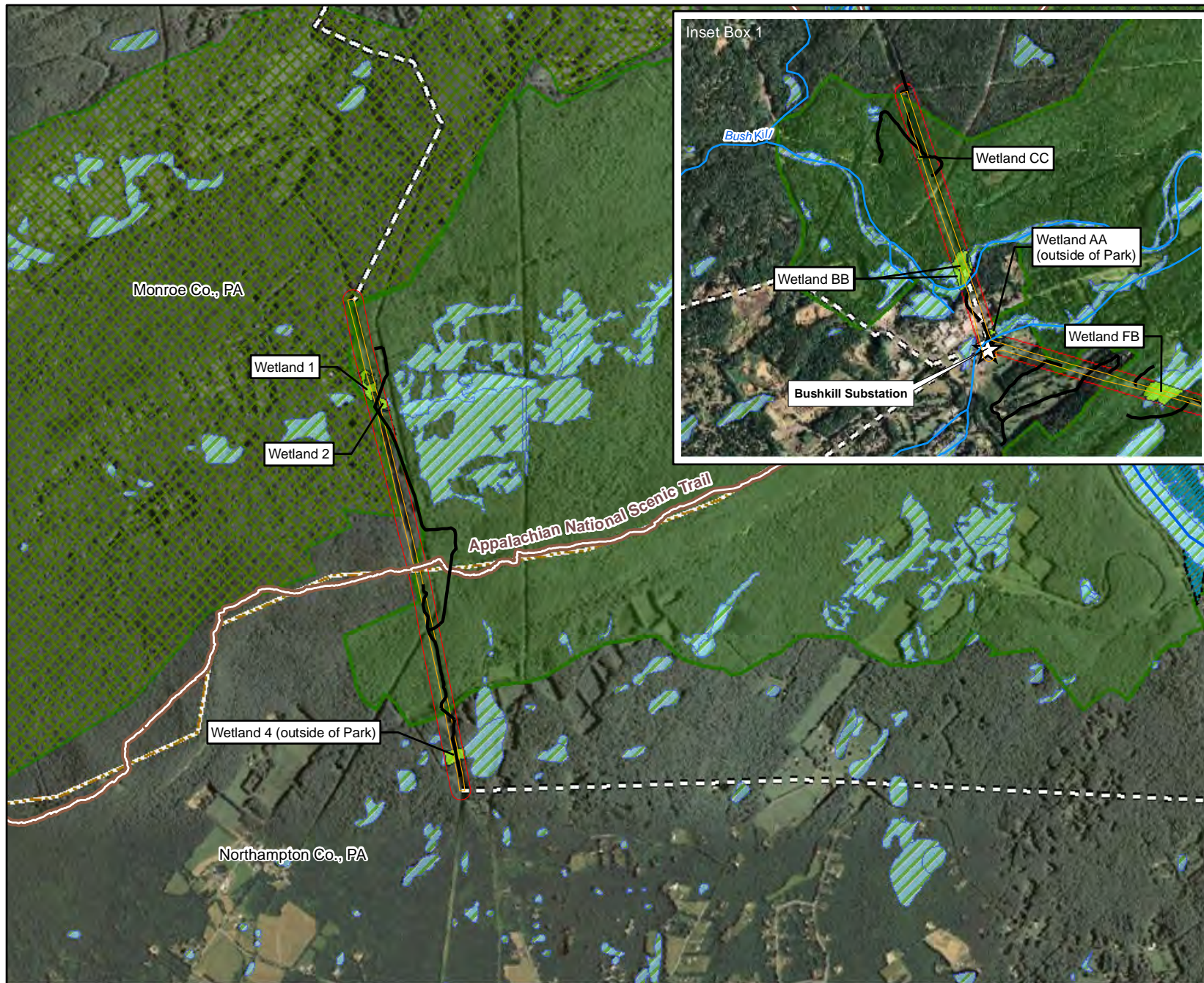


0 1,250 2,500  
Feet









### Legend

- ☆ Substation
- ▤ Outside Study Area
- Existing ROW in Study Area
- 350 ft Corridor
- Appalachian National Scenic Trail
- River/Stream
- Proposed Access Road
- Delaware Water Gap National Recreation Area
- CVNWR Boundary
- Wetlands within 350ft buffer
- Wetlands
- County Line

Note: Designated boundary of CVNWR is depicted, not all property is owned within the boundary

**Figure 8**  
**Alternatives 4 and 5 Wetlands**

Source: ESRI Streetmap 2006, Penn State 2010, ESRI ArcGISonline Map Service 2010, PennDOT 2011, USGS 2006, NJ DEP 2008, NWI 1977

Projection: NAD 83 UTM Zone 18N  
Date: June 2012

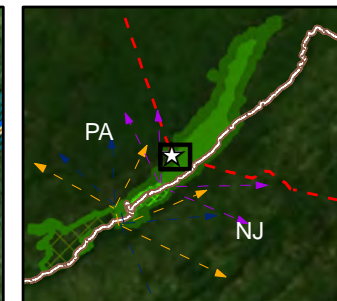
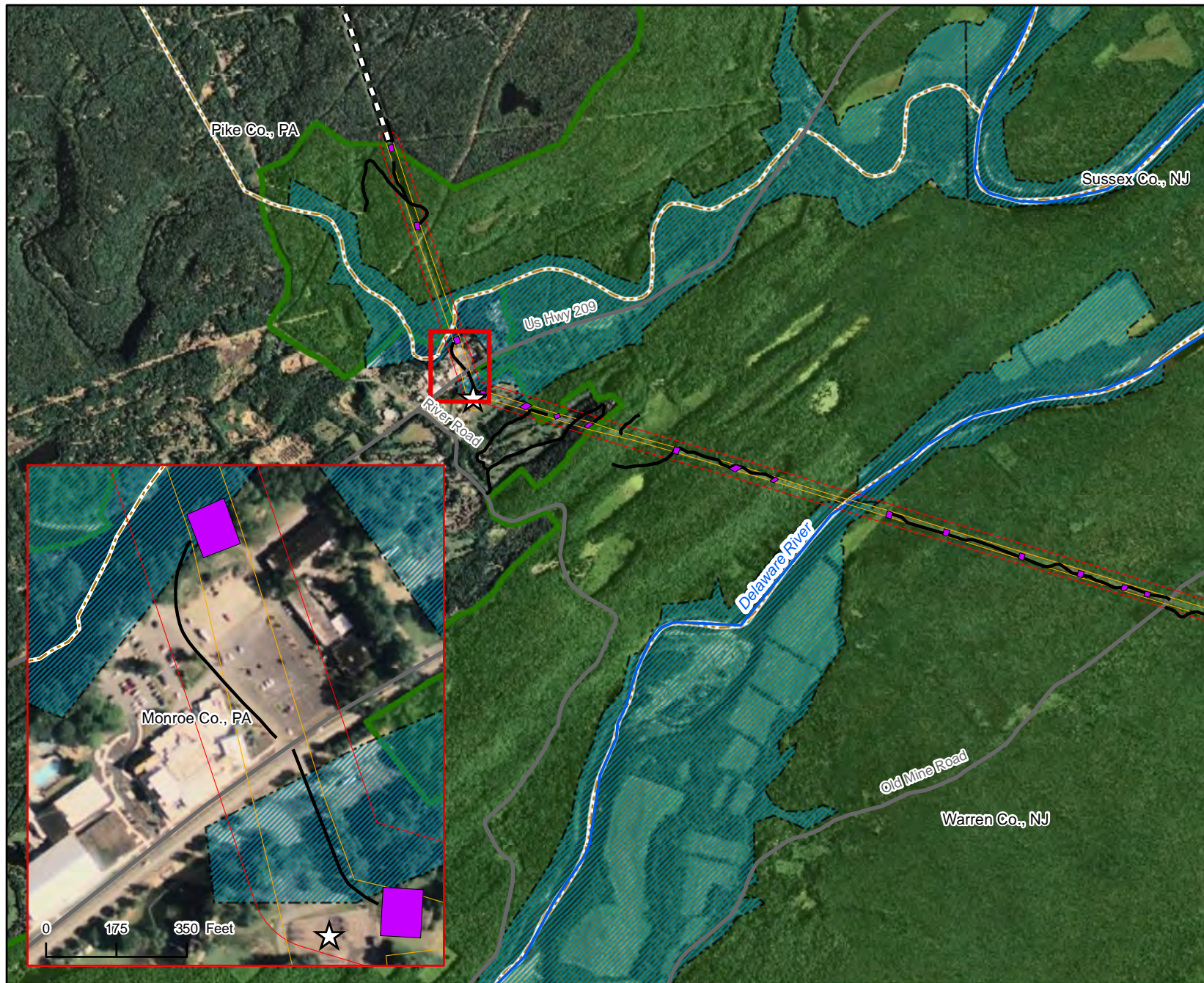


0 1,250 2,500  
Feet  
Scale applies to main frame and inset maps



Susquehanna to Roseland  
Transmission Line Proposal  
and  
Right-of-Way Request EIS





### Legend

- ☆ Substation
- Crane Pad/ Tower Location
- == Outside Study Area
- Existing ROW in Study Area
- 350 ft Corridor
- Delaware River
- Proposed Access Road
- Road
- Delaware Water Gap National Recreation Area
- Floodplain
- County Line



Susquehanna to Roseland  
Transmission Line Proposal  
and  
Right-of-Way Request EIS

**Figure 9**  
**Alternative 1 and 2 Floodplains in Pennsylvania**

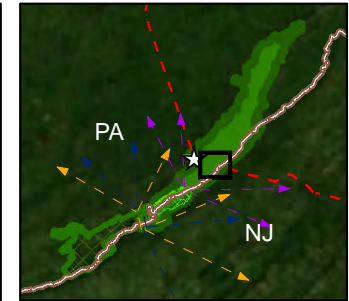
Source: ESRI Streetmap 2006, Penn State 2010,  
ESRI ArcGISonline Map Service 2010,  
PennDOT 2011, USGS 2006,  
NJ DEP 2008, NW1 1977

Projection: NAD 83 UTM Zone 18N  
Date: October, 2011



0 1,250 2,500  
Feet





#### Legend

- ☆ Substation
- Crane Pad/ Tower Location
- == Outside Study Area
- Existing ROW in Study Area
- 350 ft Corridor
- Appalachian National Scenic Trail
- Delaware River
- Proposed Access Road
- Road
- Delaware Water Gap National Recreation Area
- Floodplain
- County Line



Susquehanna to Roseland  
Transmission Line Proposal  
and  
Right-of-Way Request EIS

**Figure 10**  
**Alternatives 1 and 2 Floodplains in New Jersey**

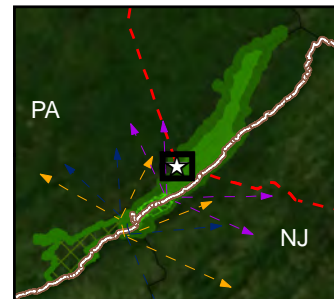
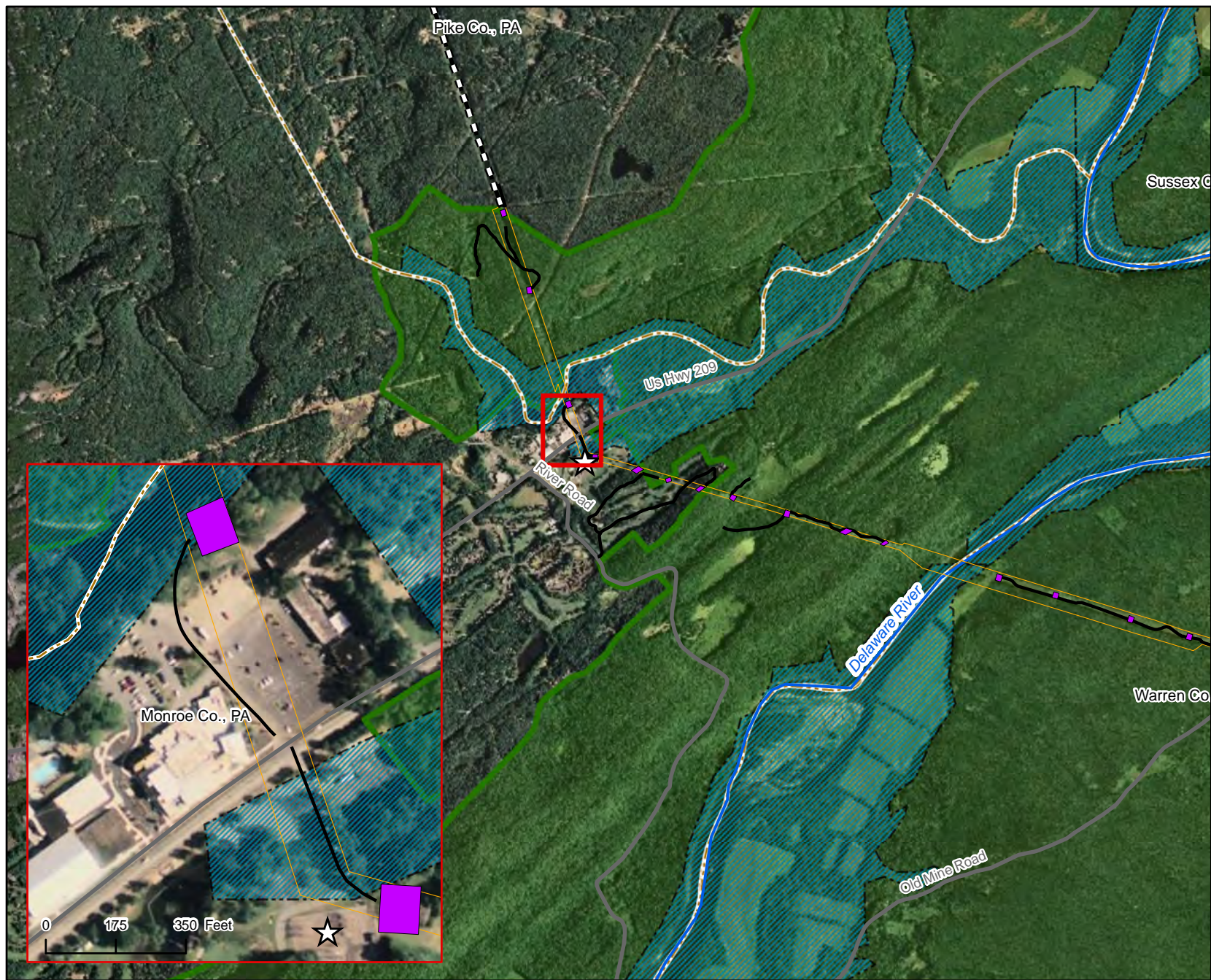
Source: ESRI Streetmap 2006, Penn State 2010,  
ESRI ArcGISonline Map Service 2010,  
PennDOT 2011, USGS 2006,  
NJ DEP 2008, NWI 1977

Projection: NAD 83 UTM Zone 18N  
Date: October, 2011



0 1,250 2,500  
Feet





#### Legend

- ☆ Substation
- Crane Pad/ Tower Location
- ▬▬ Outside Study Area
- Alternative 2b Corridor
- ~ Delaware River
- Proposed Access Road
- Road
- Delaware Water Gap National Recreation Area
- ▨ Floodplain
- ▬▬ County Line



Susquehanna to Roseland  
Transmission Line Proposal  
and  
Right-of-Way Request EIS

**Figure 11**  
**Alternative 2b Floodplains in Pennsylvania**

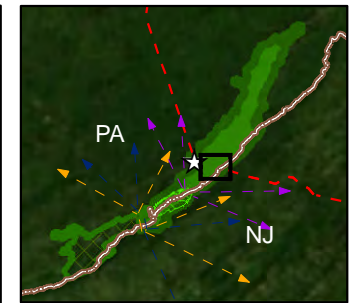
Source: ESRI Streetmap 2006, Penn State 2010,  
ESRI ArcGISonline Map Service 2010,  
PennDOT 2011, USGS 2006,  
NJ DEP 2008, NWI 1977

Projection: NAD 83 UTM Zone 18N  
Date: October, 2011



0 1,250 2,500  
Feet





#### Legend

- ☆ Substation
- Crane Pad/ Tower Location
- ▬▬ Outside Study Area
- ▬▬ Alternative 2b Corridor
- ▬▬ Appalachian National Scenic Trail
- ▬▬ Delaware River
- ▬▬ Proposed Access Road
- ▬▬ Road
- ▬▬ Delaware Water Gap National Recreation Area
- ▬▬ Floodplain
- ▬▬ County Line

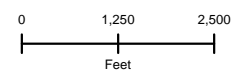


Susquehanna to Roseland  
Transmission Line Proposal  
and  
Right-of-Way Request EIS

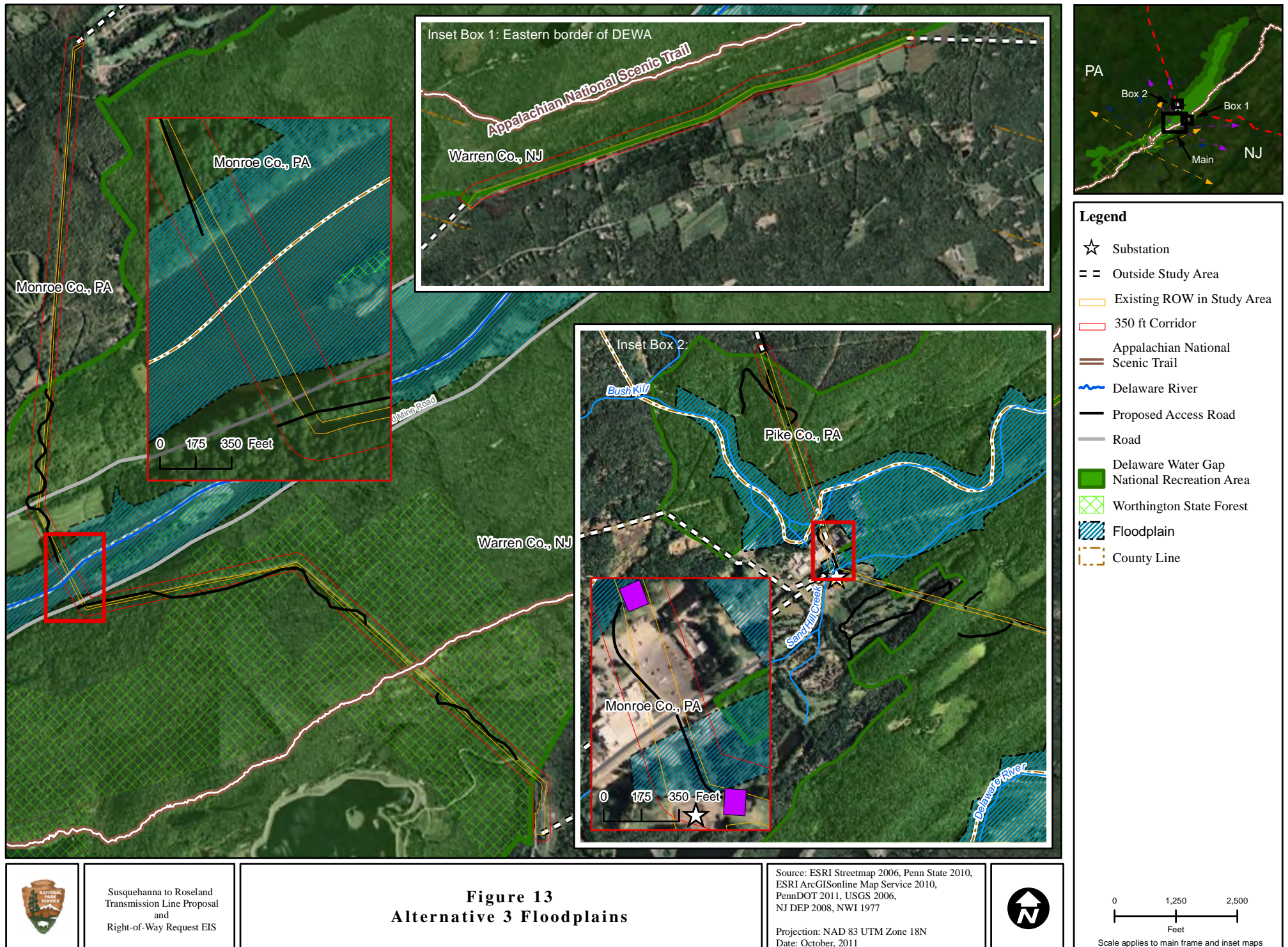
**Figure 12**  
**Alternative 2b Floodplains in New Jersey**

Source: ESRI Streetmap 2006, Penn State 2010,  
ESRI ArcGISonline Map Service 2010,  
PennDOT 2011, USGS 2006,  
NJ DEP 2008, NWI 1977

Projection: NAD 83 UTM Zone 18N  
Date: October, 2011

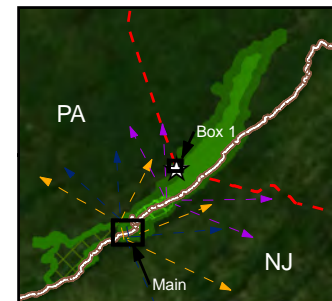






**Figure 13**  
**Alternative 3 Floodplains**





#### Legend

- ☆ Substation
- ▬ Outside Study Area
- Existing ROW in Study Area
- 350 ft Corridor
- Appalachian National Scenic Trail
- River/Stream
- Proposed Access Road
- Roads
- Delaware Water Gap
- National Recreation Area
- CVNWR Boundary
- Floodplain
- County Line

Note: Designated boundary of CVNWR is depicted, not all property is owned within the boundary



Susquehanna to Roseland  
Transmission Line Proposal  
and  
Right-of-Way Request EIS

**Figure 14**  
**Alternative 4/5 Floodplains**

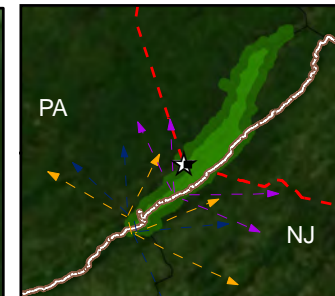
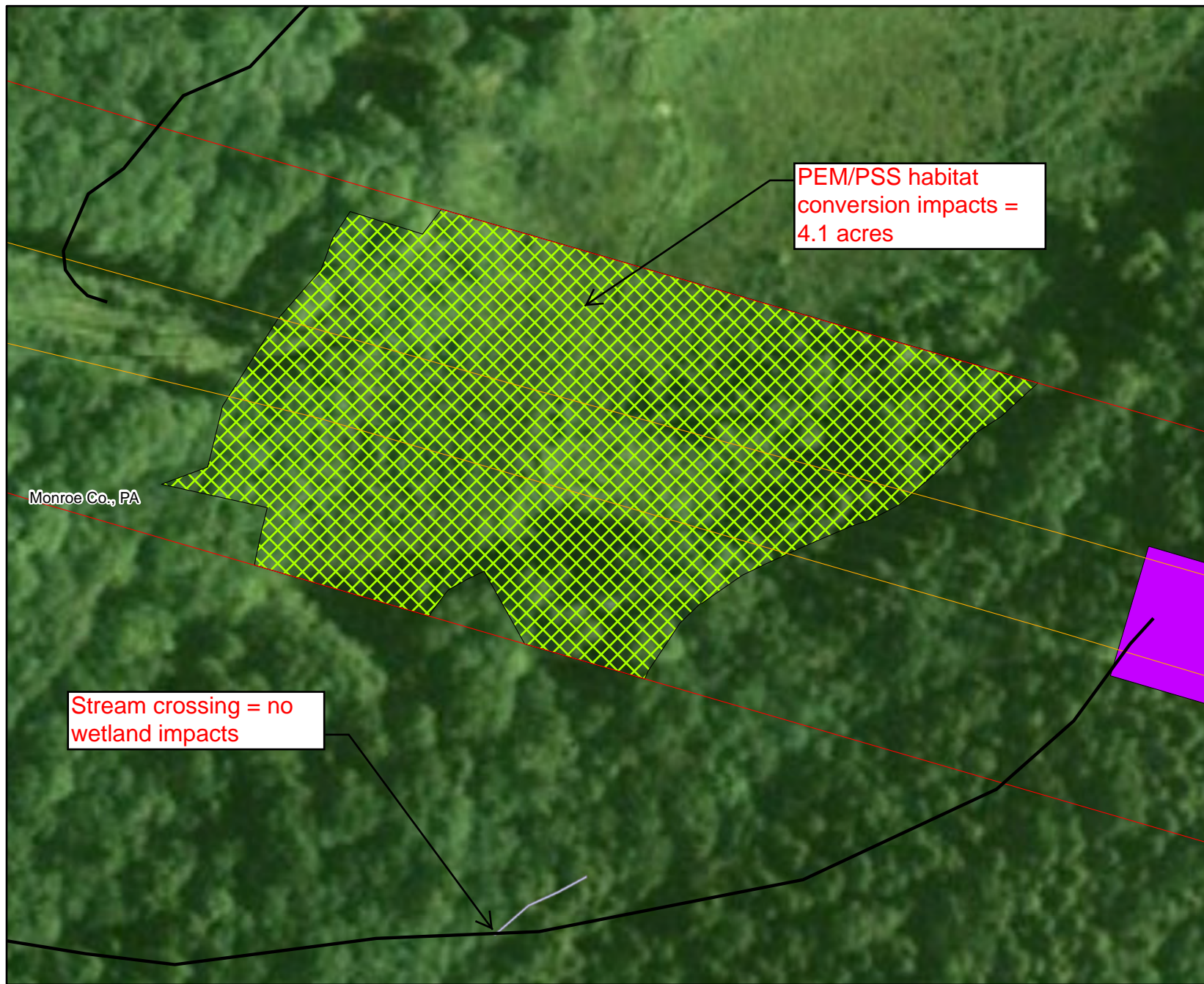
Source: ESRI Streetmap 2006, Penn State 2010,  
ESRI ArcGISonline Map Service 2010,  
PennDOT 2011, USGS 2006,  
NJ DEP 2008, NWI 1977

Projection: NAD 83 UTM Zone 18N  
Date: October, 2011



0 1,250 2,500  
Feet  
Scale applies to main frame and inset map





#### Legend

- ☆ Substation
  - Crane Pad/ Tower Location
  - = Outside Study Area
  - Existing ROW in Study Area
  - 350 ft Corridor
  - Appalachian National Scenic Trail
  - Delaware River
  - Proposed Access Road
  - Road
  - Delaware Water Gap National Recreation Area
  - County Line
  - Delaware River
  - Waterbody
- Wetlands within 350ft buffer**
- Forested Wetland (PFO)
  - Emergent Wetland (PEM)
  - Emergent / Scrub - Shrub Wetland (PEM/PSS)



Susquehanna to Roseland  
Transmission Line Proposal  
and  
Right-of-Way Request EIS

**Figure 15**  
**Impacts to Arnott Fen, Alternative 2**

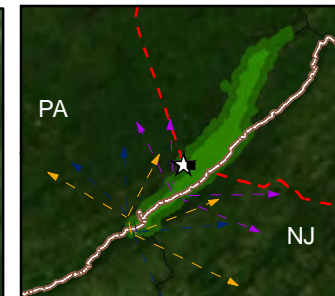
Source: ESRI Streetmap 2006, Penn State 2010,  
ESRI ArcGISonline Map Service 2010,  
PennDOT 2011, USGS 2006,  
NJ DEP 2008, NWI 1977

Projection: NAD 83 UTM Zone 18N  
Date: June 2012



0 50 100  
Feet





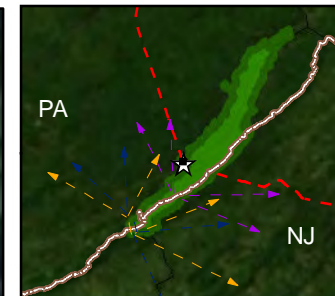
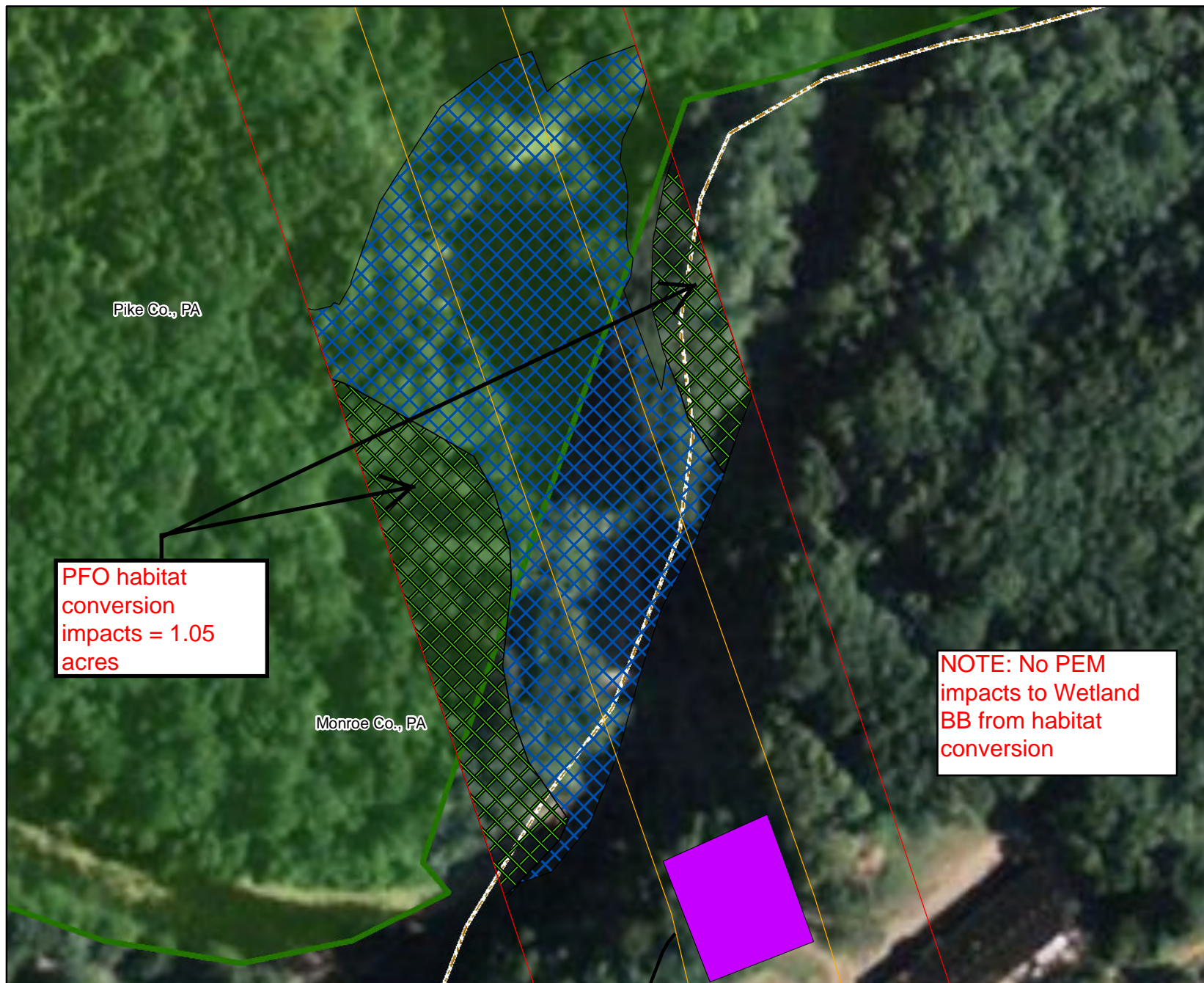
# Legend

- ☆ Substation
- Crane Pad/ Tower Location
- = Outside Study Area
- Existing ROW in Study Area
- 350 ft Corridor
- Appalachian National Scenic Trail
- Delaware River
- Proposed Access Road
- Road
- Delaware Water Gap National Recreation Area
- County Line
- Delaware River
- Waterbody
- Wetlands within 350ft buffer**
- Forested Wetland (PFO)
- Emergent Wetland (PEM)
- Emergent / Scrub - Shrub Wetland (PEM/PSS)Figure









### Legend

- ☆ Substation
  - Crane Pad/ Tower Location
  - == Outside Study Area
  - Existing ROW in Study Area
  - 350 ft Corridor
  - Appalachian National Scenic Trail
  - Delaware River
  - Proposed Access Road
  - Road
  - Delaware Water Gap National Recreation Area
  - County Line
  - Delaware River
  - Waterbody
- Wetlands within 350ft buffer**
- Forested Wetland (PFO)
  - Emergent Wetland (PEM)
  - Emergent / Scrub - Shrub Wetland (PEM/PSS)F



Susquehanna to Roseland  
Transmission Line Proposal  
and  
Right-of-Way Request EIS

**Figure 18**  
**Impacts to Wetland BB, Alternative 2**

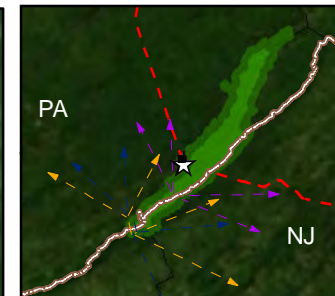
Source: ESRI Streetmap 2006, Penn State 2010,  
ESRI ArcGISonline Map Service 2010,  
PennDOT 2011, USGS 2006,  
NJ DEP 2008, NWI 1977

Projection: NAD 83 UTM Zone 18N  
Date: 2012



0 50 100  
Feet





### Legend

- ☆ Substation
  - Crane Pad/ Tower Location
  - = Outside Study Area
  - Existing ROW in Study Area
  - 350 ft Corridor
  - Appalachian National Scenic Trail
  - Delaware River
  - Proposed Access Road
  - Road
  - Delaware Water Gap National Recreation Area
  - County Line
  - Delaware River
  - Waterbody
- Wetlands within 350ft buffer**
- Forested Wetland (PFO)
  - Emergent Wetland (PEM)
  - Emergent / Scrub - Shrub Wetland (PEM/PSS)



Susquehanna to Roseland  
Transmission Line Proposal  
and  
Right-of-Way Request EIS

**Figure 19**  
**Impacts to Wetland CC, Alternative 2**

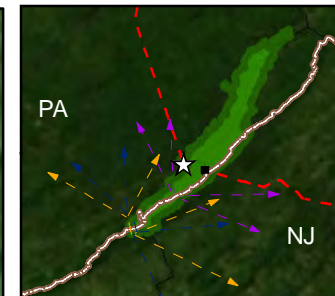
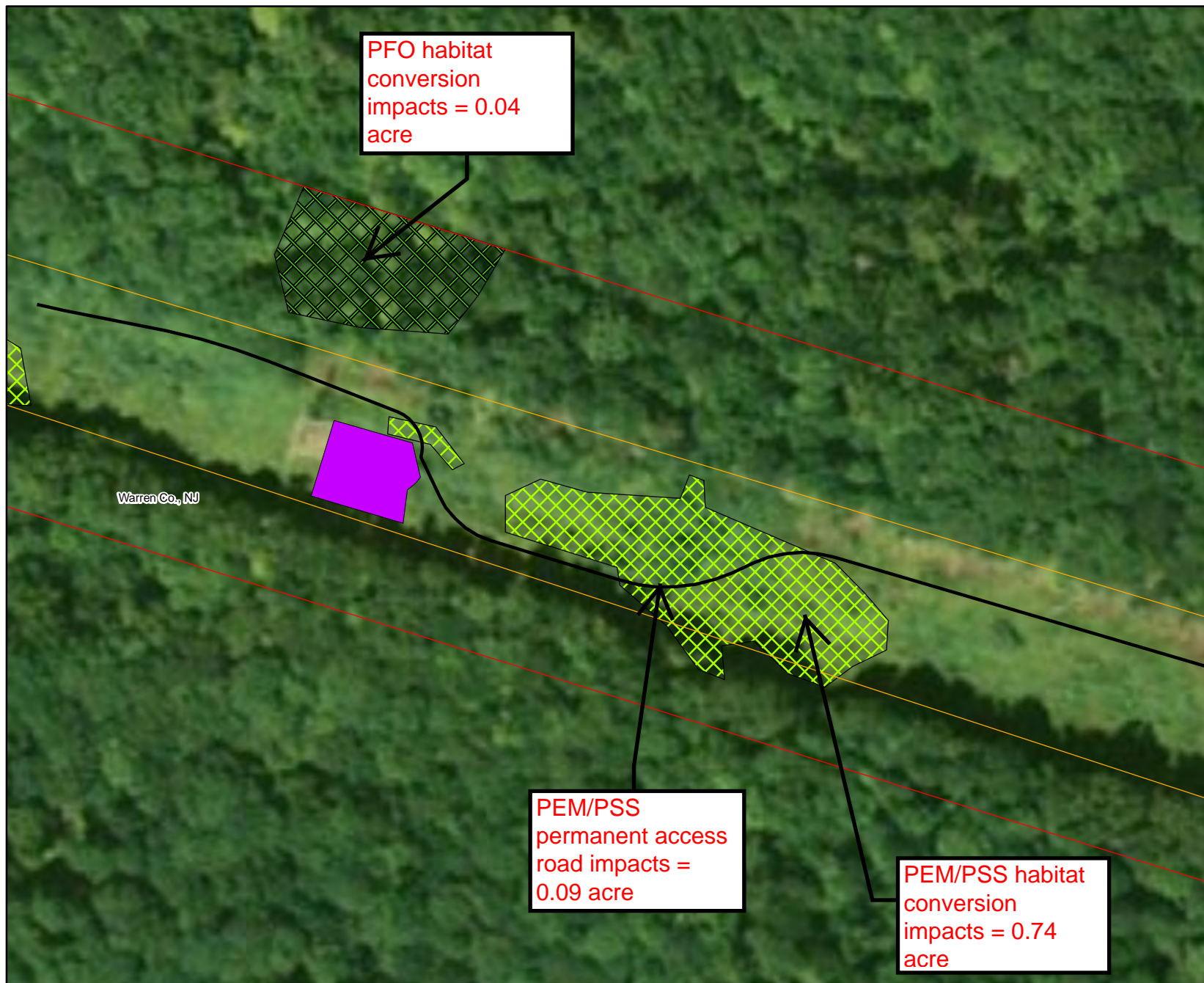
Source: ESRI Streetmap 2006, Penn State 2010,  
ESRI ArcGISonline Map Service 2010,  
PennDOT 2011, USGS 2006,  
NJ DEP 2008, NWI 1977

Projection: NAD 83 UTM Zone 18N  
Date: 2012



0 50 100  
Feet





#### Legend

- ☆ Substation
- Crane Pad/ Tower Location
- = Outside Study Area
- Existing ROW in Study Area
- 350 ft Corridor
- Appalachian National Scenic Trail
- Delaware River
- Proposed Access Road
- Road
- Delaware Water Gap National Recreation Area
- County Line
- Delaware River
- Waterbody

#### Wetlands within 350ft buffer

- Forested Wetland (PFO)
- Emergent Wetland (PEM)
- Emergent / Scrub - Shrub Wetland (PEM/PSS)



Susquehanna to Roseland  
Transmission Line Proposal  
and  
Right-of-Way Request EIS

**Figure 20**  
**Impacts to Wetland 42, Alternative 2**

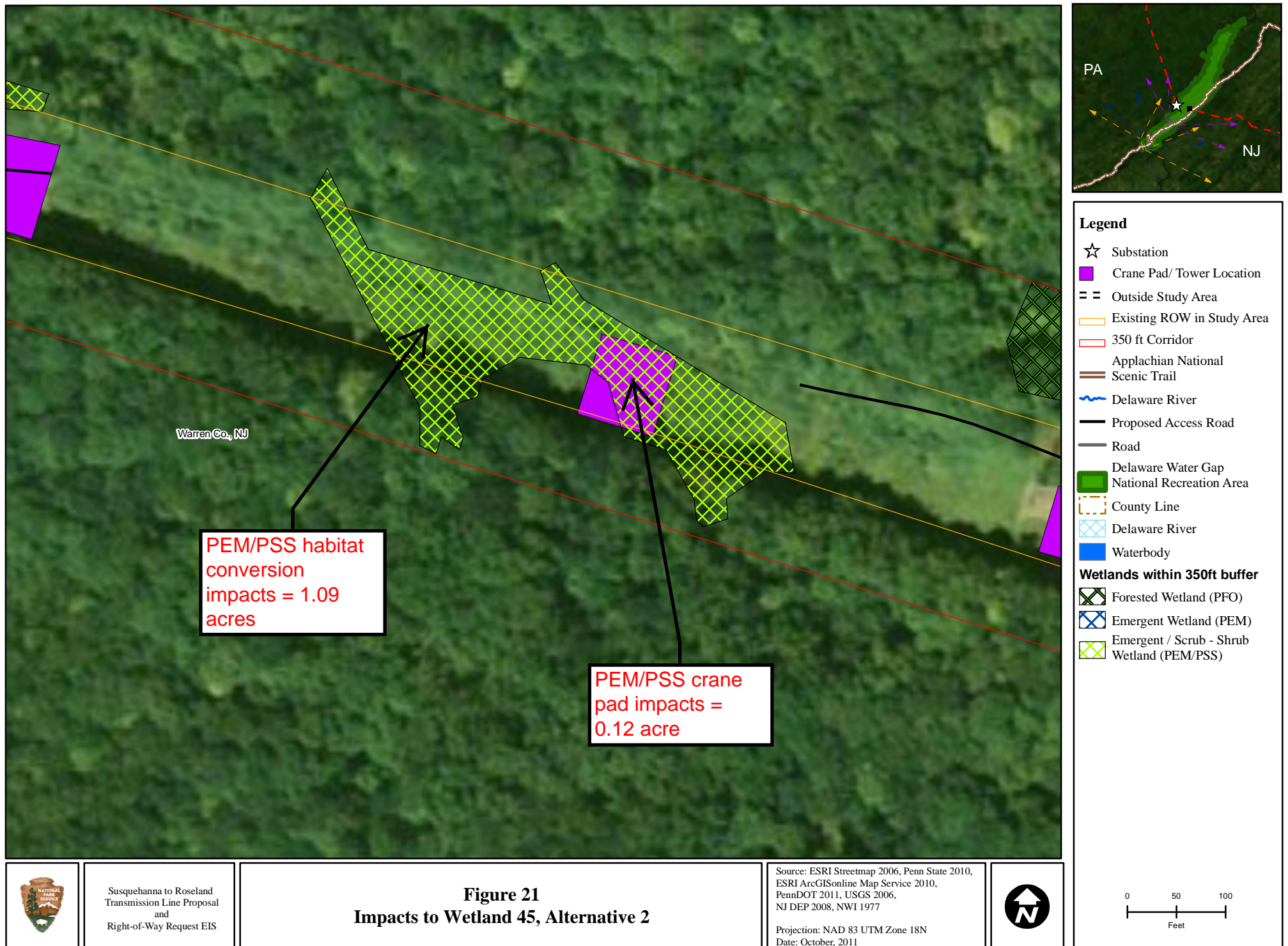
Source: ESRI Streetmap 2006, Penn State 2010,  
ESRI ArcGISonline Map Service 2010,  
PennDOT 2011, USGS 2006,  
NJ DEP 2008, NWI 1977

Projection: NAD 83 UTM Zone 18N  
Date: 2012

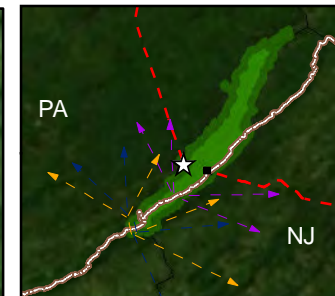
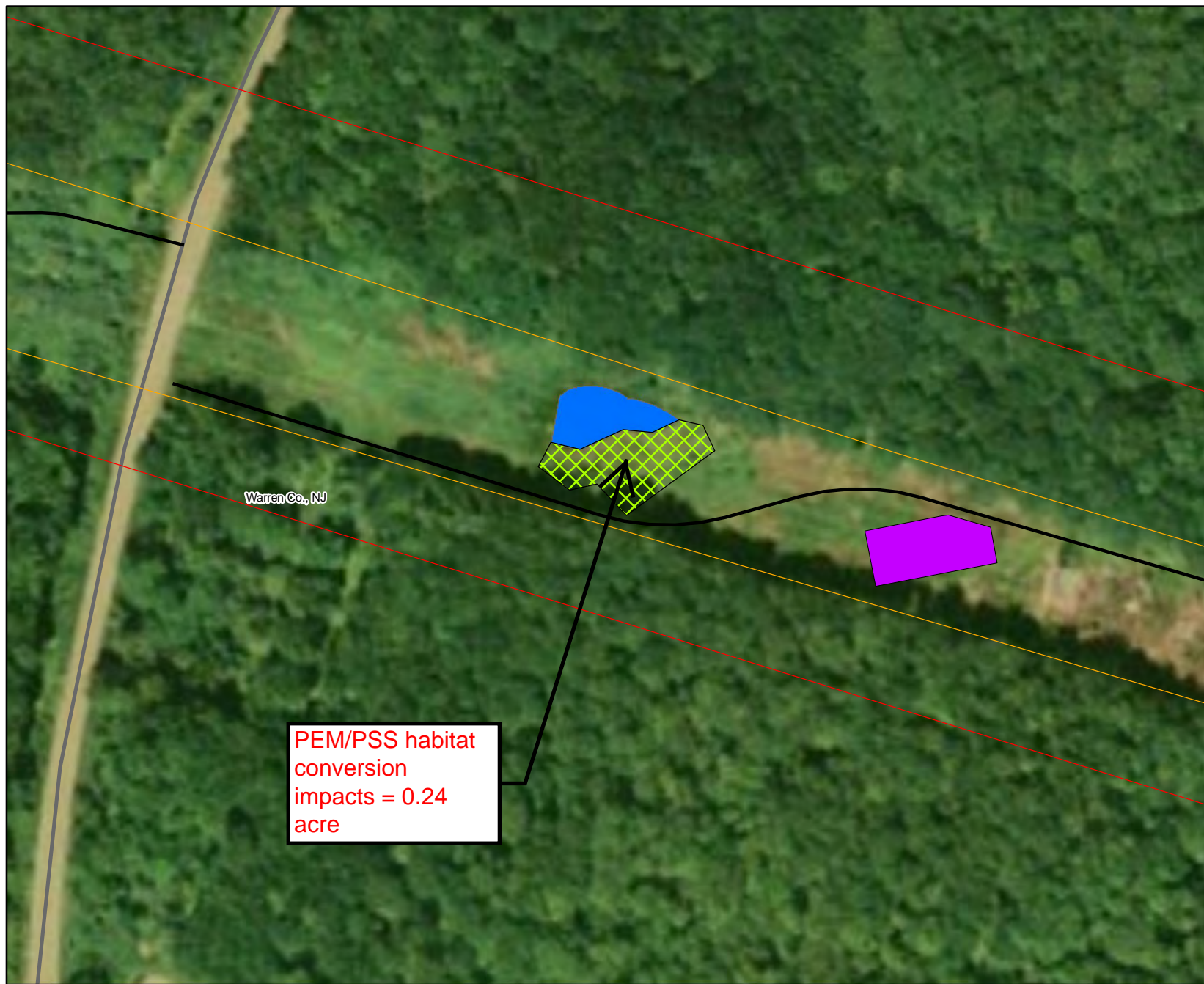


0 50 100  
Feet









### Legend

- ☆ Substation
  - Crane Pad/ Tower Location
  - == Outside Study Area
  - Existing ROW in Study Area
  - 350 ft Corridor
  - Appalachian National Scenic Trail
  - Delaware River
  - Proposed Access Road
  - Road
  - Delaware Water Gap National Recreation Area
  - County Line
  - Delaware River
  - Waterbody
- Wetlands within 350ft buffer**
- Forested Wetland (PFO)
  - Emergent Wetland (PEM)
  - Emergent / Scrub - Shrub Wetland (PEM/PSS)



Susquehanna to Roseland  
Transmission Line Proposal  
and  
Right-of-Way Request EIS

**Figure 22**  
**Impacts to Wetland 46, Alternative 2**

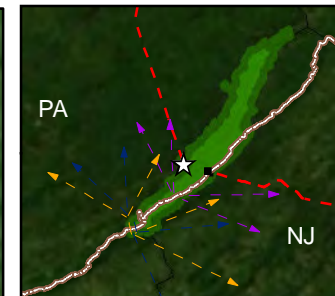
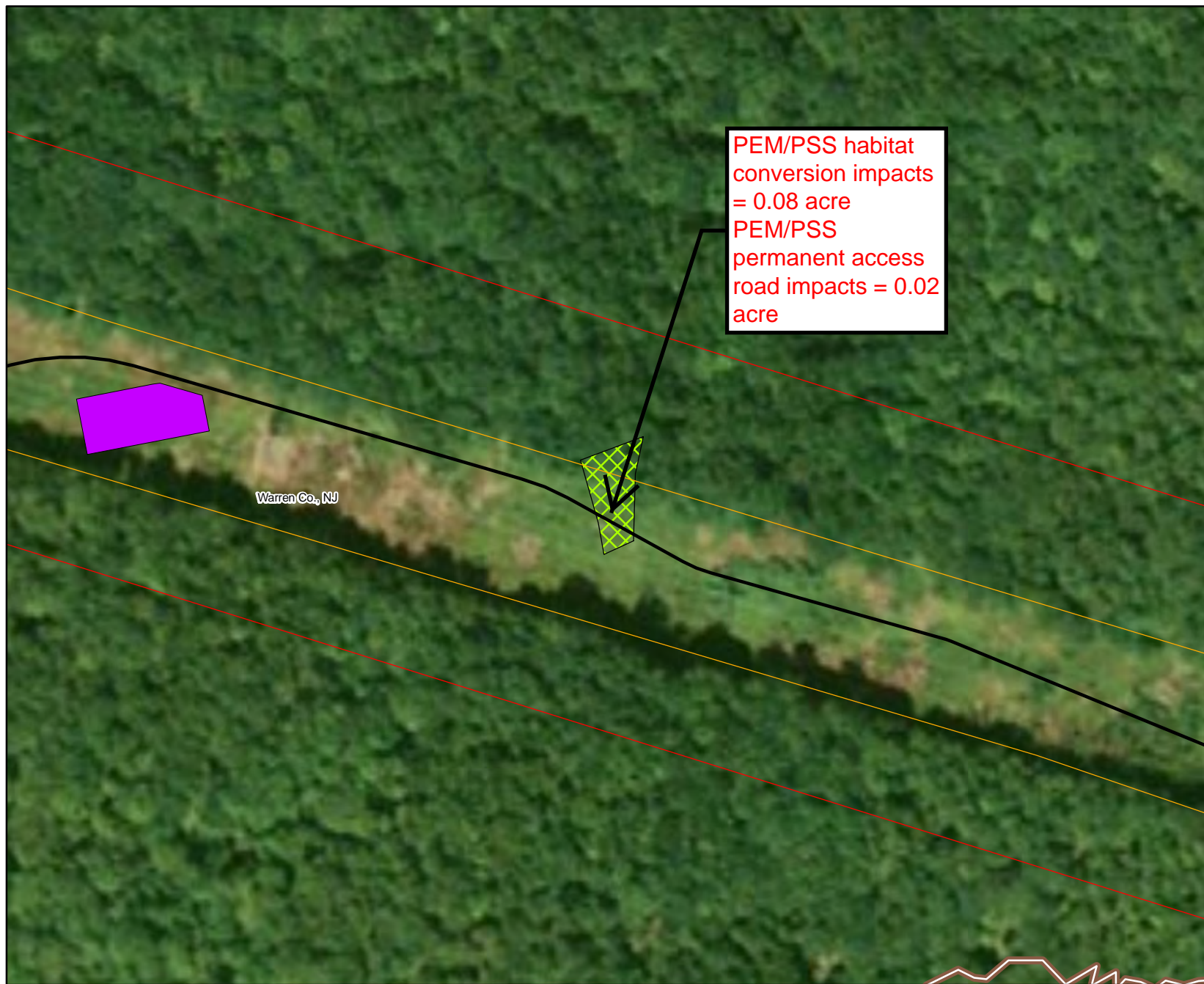
Source: ESRI Streetmap 2006, Penn State 2010,  
ESRI ArcGISonline Map Service 2010,  
PennDOT 2011, USGS 2006,  
NJ DEP 2008, NWI 1977

Projection: NAD 83 UTM Zone 18N  
Date: 2012



0 50 100  
Feet





#### Legend

- ☆ Substation
  - Crane Pad/ Tower Location
  - = = Outside Study Area
  - Existing ROW in Study Area
  - 350 ft Corridor
  - Appalachian National Scenic Trail
  - Delaware River
  - Proposed Access Road
  - Road
  - Delaware Water Gap National Recreation Area
  - County Line
  - Delaware River
  - Waterbody
- Wetlands within 350ft buffer**
- Forested Wetland (PFO)
  - Emergent Wetland (PEM)
  - Emergent / Scrub - Shrub Wetland (PEM/PSS)



Susquehanna to Roseland  
Transmission Line Proposal  
and  
Right-of-Way Request EIS

**Figure 23**  
**Impacts to Wetland 47, Alternative 2**

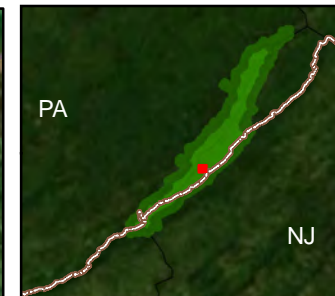
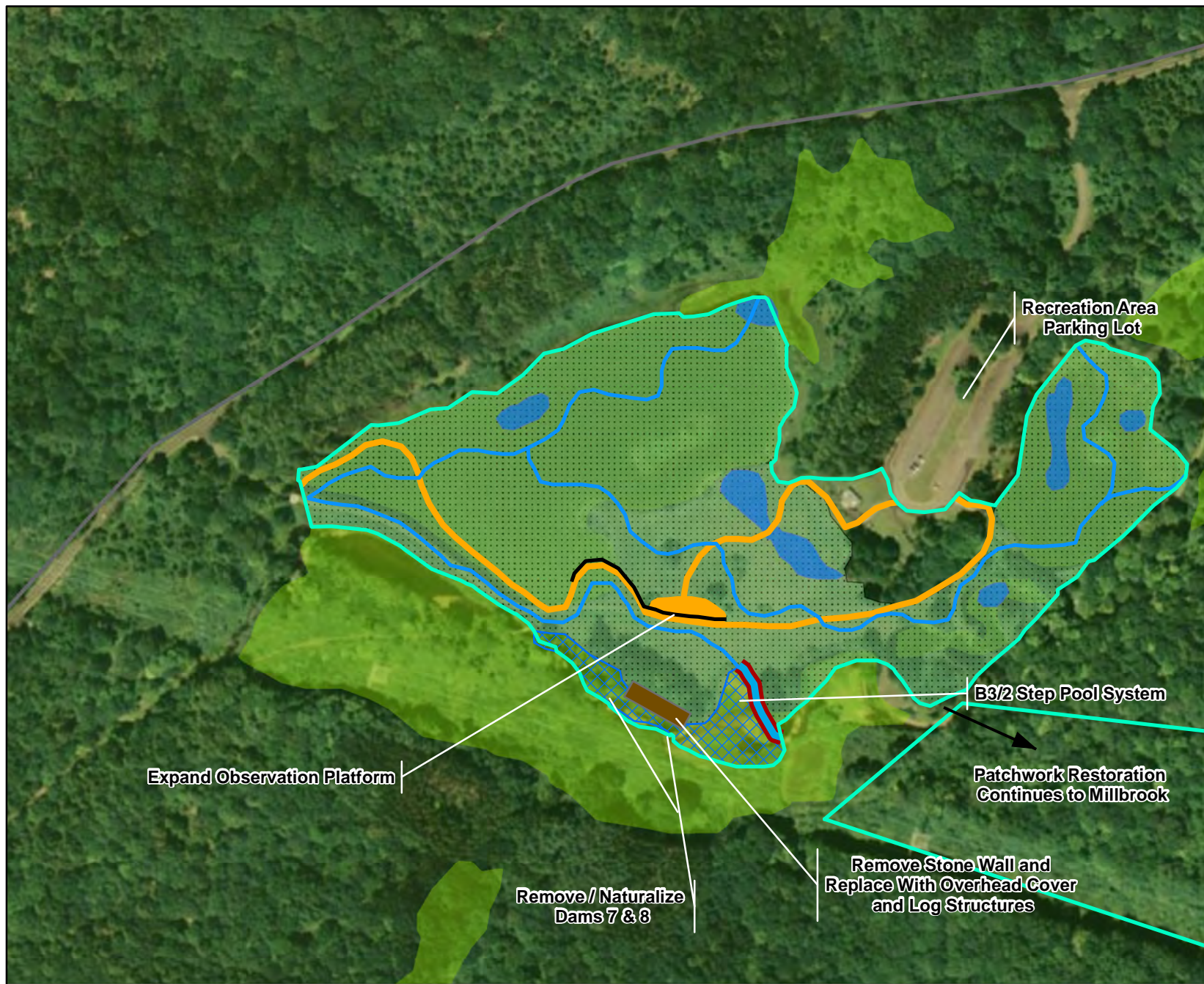
Source: ESRI Streetmap 2006, Penn State 2010,  
ESRI ArcGISonline Map Service 2010,  
PennDOT 2011, USGS 2006,  
NJ DEP 2008, NWI 1977

Projection: NAD 83 UTM Zone 18N  
Date: 2012



0 50 100  
Feet

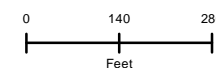




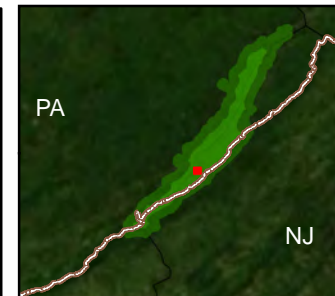
#### Legend

- Proposed Stream Restoration
- Proposed B3/2 Stream
- Existing Wetlands
- Proposed Wetland Restoration (17.85 Acres)
- Proposed Open Water Habitat
- Proposed Side Channel Habitat (0.91 Acres)
- Proposed ADA Flyfishing Area
- Proposed ADA Boardwalk
- Proposed Work Area Boundary

Note:  
 Mitigation boundary extends beyond map view







#### Legend

- Existing Stream / Creek
- Wetlands
- Stream Channel Restoration (Passive)
- Proposed Work Area Boundary

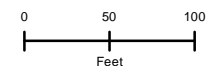


Susquehanna to Roseland  
Transmission Line Proposal  
and  
Right-of-Way Request EIS

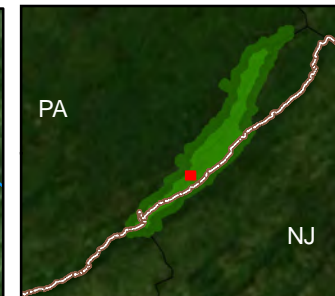
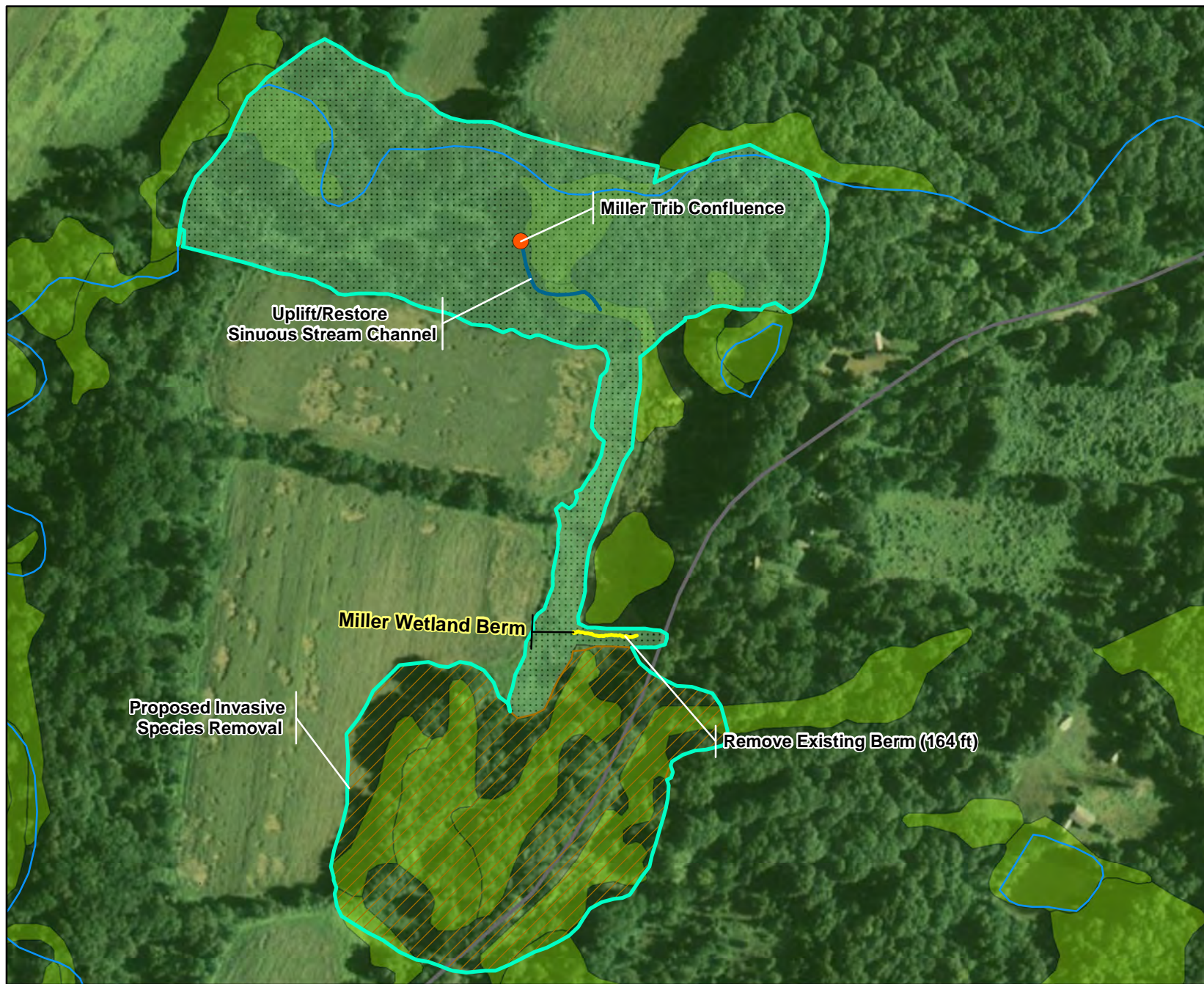
**Figure 25**  
**Cutoff Road Dam, Van Campens Restoration Project**  
**Proposed Mitigation Projects**

Source: ESRI Streetmap 2006, Penn State 2010,  
ESRI ArcGISonline Map Service 2010,  
PennDOT 2011, USGS 2006,  
NJ DEP 2008, NWI 1977

Projection: NAD 83 UTM Zone 18N  
Date: July 2012







#### Legend

- GPS Point Collected in June
- WetlandMitigation\_GPSLine
- Existing Stream / Creek
- ~ Sinuous Stream Channel
- Existing Wetlands
- Proposed Emergent Wetland Restoration (13.16 Acres)
- Proposed Invasive Species Control (11.61 Acres)
- Proposed Work Area Boundary



Susquehanna to Roseland  
Transmission Line Proposal  
and  
Right-of-Way Request EIS

**Figure 26**  
**Miller Wetland Restoration Project**  
**Proposed Mitigation Projects**

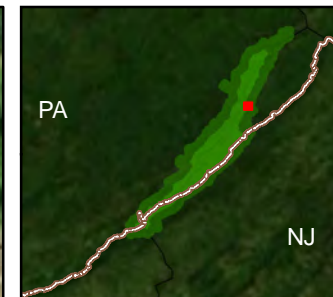
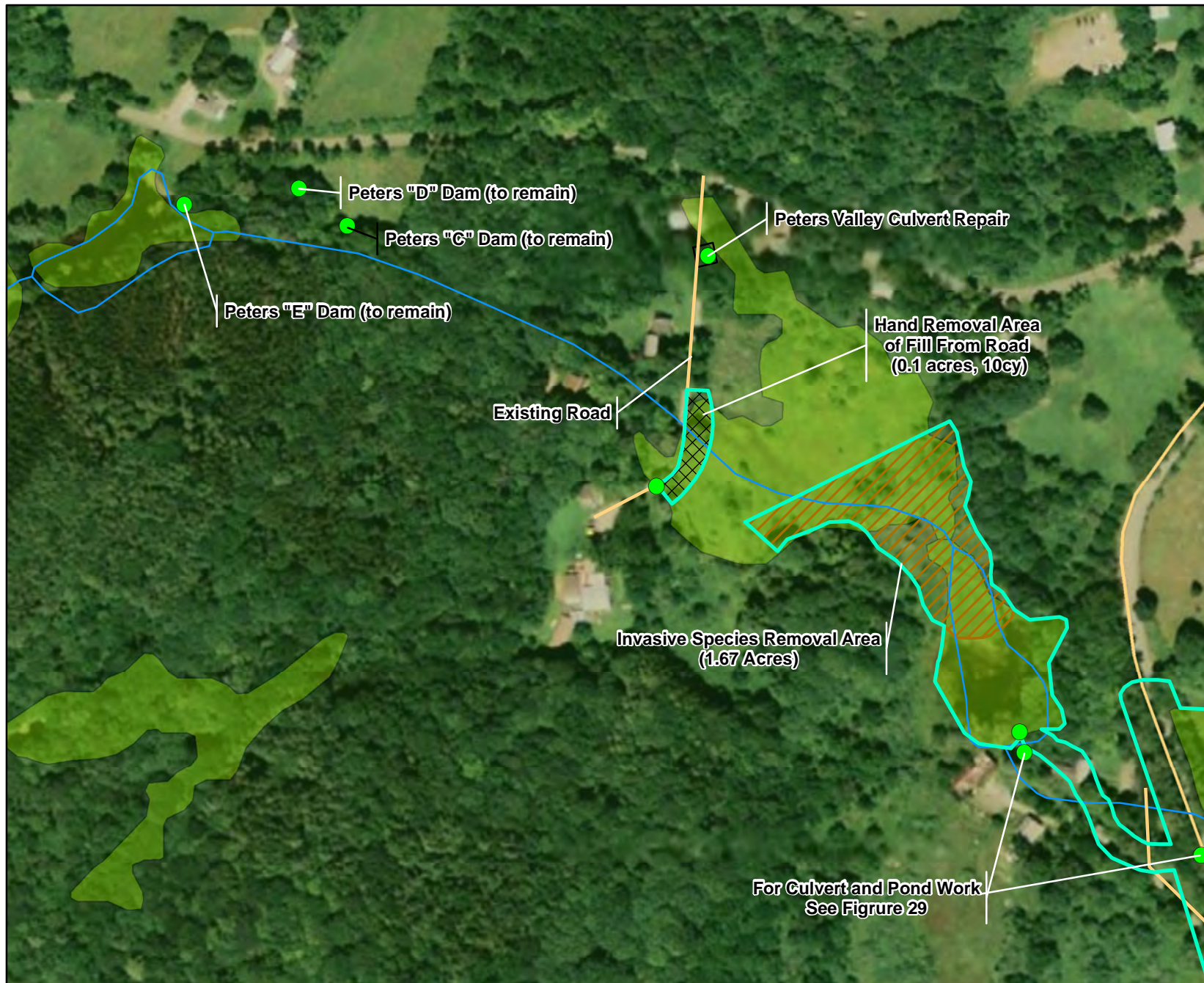
Source: ESRI Streetmap 2006, Penn State 2010,  
ESRI ArcGISonline Map Service 2010,  
PennDOT 2011, USGS 2006,  
NJ DEP 2008, NWI 1977

Projection: NAD 83 UTM Zone 18N  
Date: July 2012



0 160 320  
Feet





#### Legend

- GPS Point Collected in May
- Existing Stream / Creek
- Existing Wetlands
- Existing Roads
- Proposed Hand Removed Area of Road Fill (Oilac)
- Proposed Invasive Species Control Area (1.67 Acres)
- Proposed Work Area Boundary



Susquehanna to Roseland  
Transmission Line Proposal  
and  
Right-of-Way Request EIS

**Figure 27**  
**Peters Culvert and Wetlands Restoration Project**  
**Proposed Mitigation Projects**

Source: ESRI Streetmap 2006, Penn State 2010,  
ESRI ArcGISonline Map Service 2010,  
PennDOT 2011, USGS 2006,  
NJ DEP 2008, NWI 1977

Projection: NAD 83 UTM Zone 18N  
Date: July 2012



0 120 240  
Feet

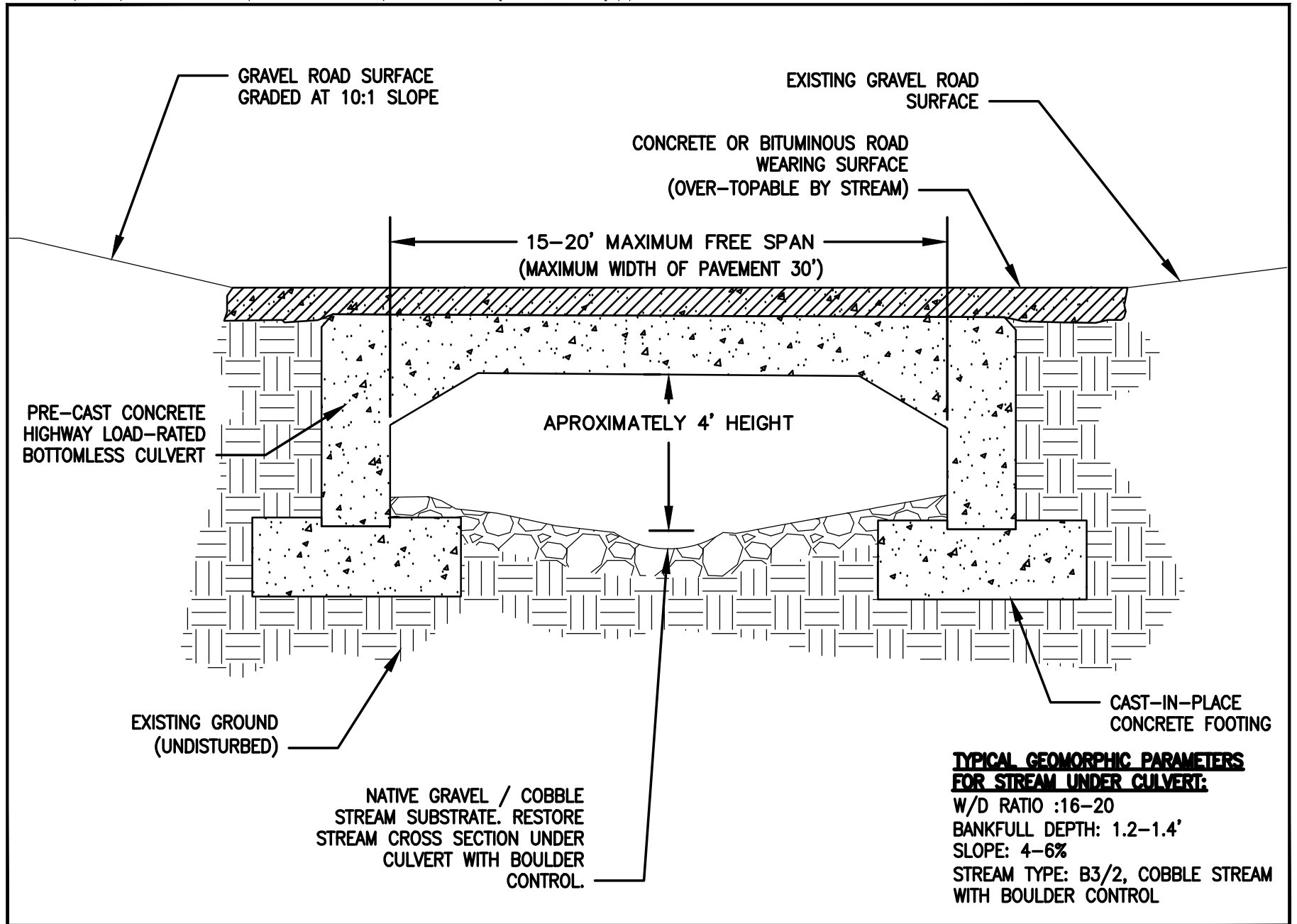
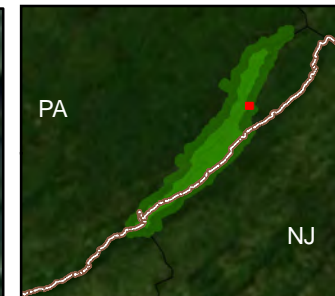


Figure 28. Peters Valley Culvert Replacement Typical Detail  
(Section View)





### Legend

- GPS Point Collected in May
- Existing Stream / Creek
- Existing Wetlands
- Proposed Open Water
- Proposed Wetland Restoration (Open Water Conversion) (0.93 Acres)
- Proposed Invasive Species Control Area
- Proposed Stream Restoration
- Proposed Cobble B3/2 Stream for Connectivity
- X X Herpetofauna Fencing
- Existing Roads
- Proposed Work Area Boundary

### Note:

- Mitigation boundary extends beyond map view

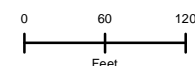


Susquehanna to Roseland  
Transmission Line Proposal  
and  
Right-of-Way Request EIS

**Figure 29**  
**Peters Mill Pond Wetland Restoration**  
**And RT 615 Connectivity Projects**

Source: ESRI Streetmap 2006, Penn State 2010,  
ESRI ArcGISonline Map Service 2010,  
PennDOT 2011, USGS 2006,  
NJ DEP 2008, NWI 1977

Projection: NAD 83 UTM Zone 18N  
Date: July 2012



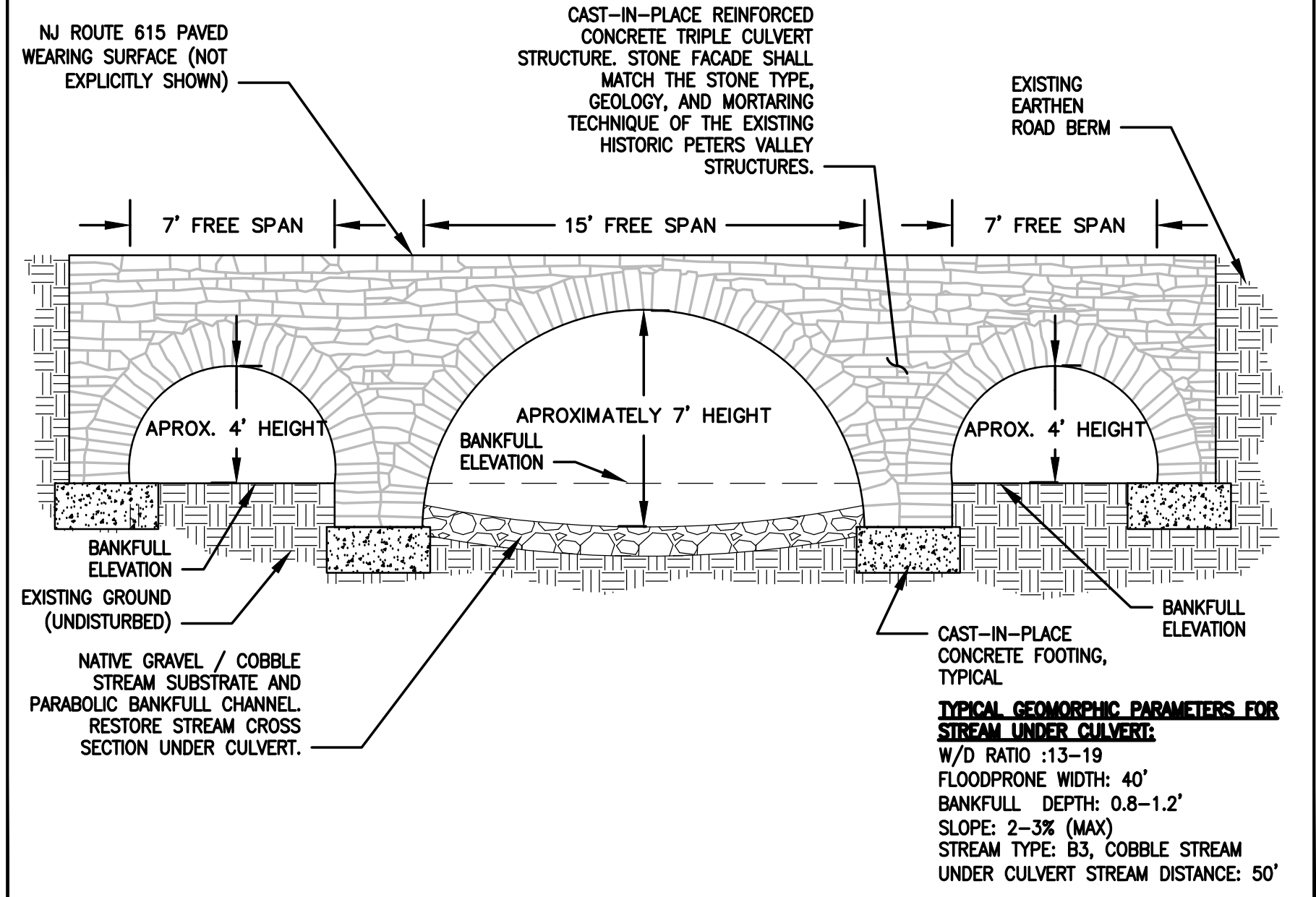
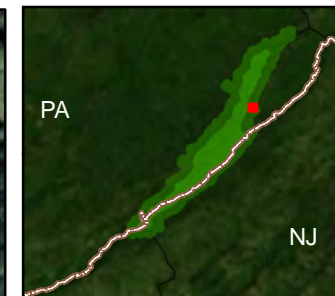
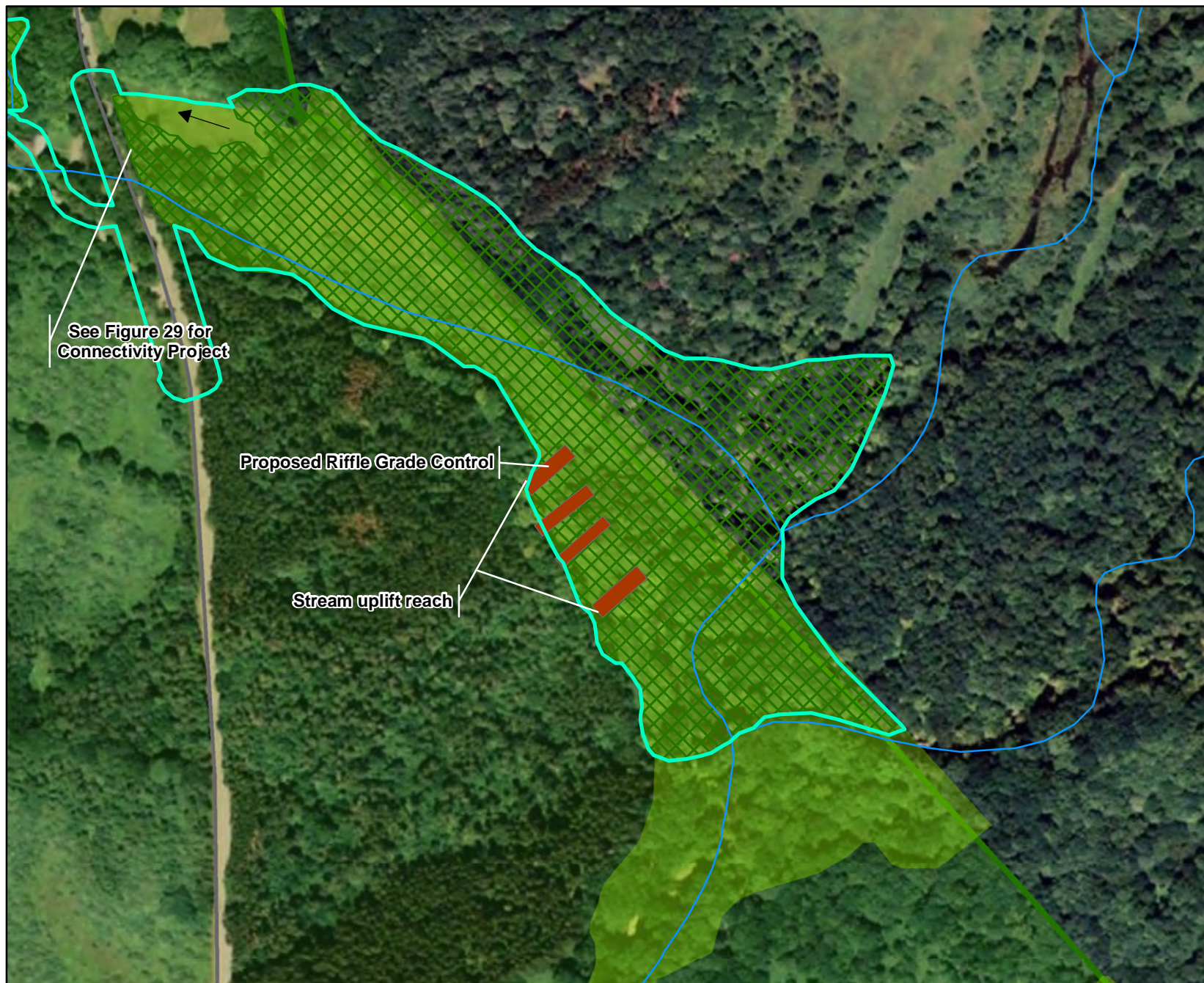


Figure 30. Peters Valley NJ Route 615 Herpetofauna Connectivity Project  
(Section View)





#### Legend

- Existing Stream / Creek
- Existing Wetlands
- Proposed Riffle Grade Control
- Proposed Wetland Restoration Area (Grading) (18.82 Acres)
- Proposed Work Area Boundary

#### Note:

- Mitigation boundary extends beyond map view

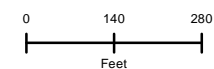


Susquehanna to Roseland  
Transmission Line Proposal  
and  
Right-of-Way Request EIS

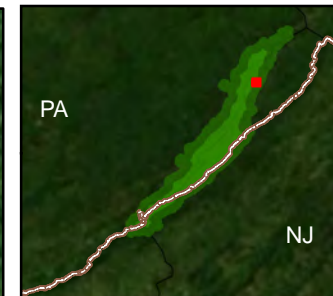
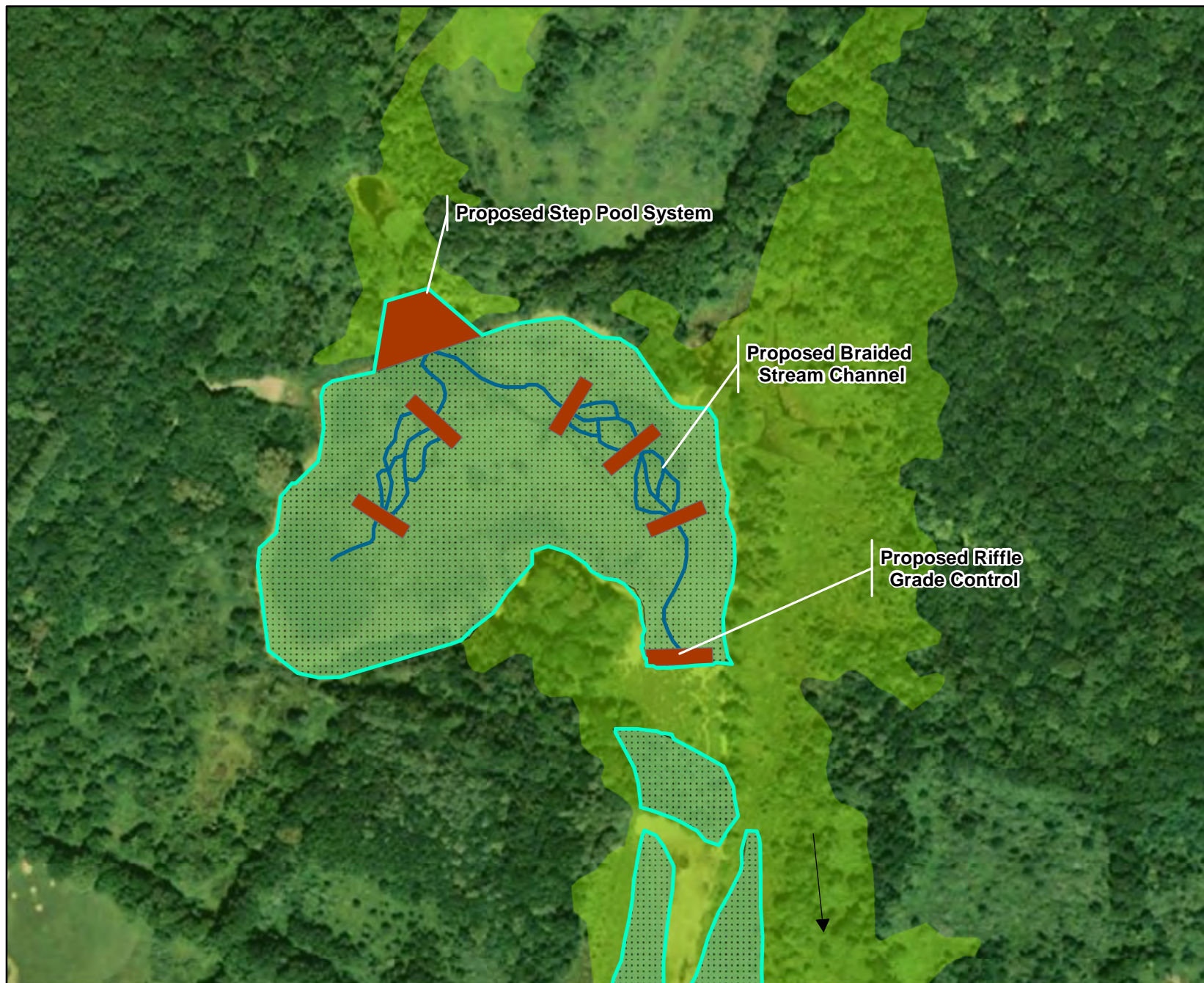
**Figure 31**  
**UNT to Little Flatbrook Wetland Restoration Project**  
**Proposed Mitigation Projects**

Source: ESRI Streetmap 2006, Penn State 2010,  
ESRI ArcGISonline Map Service 2010,  
PennDOT 2011, USGS 2006,  
NJ DEP 2008, NWI 1977

Projection: NAD 83 UTM Zone 18N  
Date: July 2012







#### Legend

- Existing Stream / Creek
- ~ Sinuous Stream Channel
- Existing Wetlands
- Proposed Step Pool System / B3 Stream
- Proposed Emergent Wetland Restoration (Conversion) / Enhancement (11.05 Acres)
- Proposed Work Area Boundary

#### Note:

- Mitigation boundary extends beyond map view



Susquehanna to Roseland  
Transmission Line Proposal  
and  
Right-of-Way Request EIS

**Figure 32**  
**Camp Kittatinny Pond Wetland Restoration Project**  
**Proposed Mitigation Projects**

Source: ESRI Streetmap 2006, Penn State 2010,  
ESRI ArcGISonline Map Service 2010,  
PennDOT 2011, USGS 2006,  
NJ DEP 2008, NWI 1977

Projection: NAD 83 UTM Zone 18N  
Date: July 2012



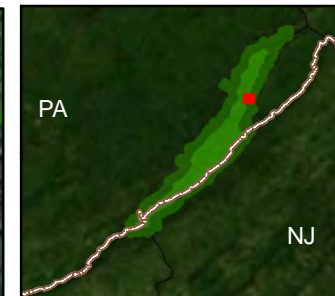
0 130 260  
Feet





- Legend**
- Existing Stream / Creek
  - ~ Proposed Stream Restoration
  - Existing Wetlands
  - Proposed Emergent Wetland Restoration (Conversion) / Enhancement (6.65 Acres)
  - Proposed Work Area Boundary
- Note:**
- Mitigation boundary extends beyond map view





### Legend

- GPS Line collected in June
- Existing Stream / Creek
- ~ Proposed Stream Channel Restoration
- Existing Open Water
- Existing Wetlands
- Proposed Step Pool System / C3 Stream
- Proposed Emergent Wetland Restoration (Conversion) (1.08 Acres)
- Proposed Emergent Wetland Restoration (Grading) (2.95 Acres)
- Proposed Work Area Boundary



Susquehanna to Roseland  
Transmission Line Proposal  
and  
Right-of-Way Request EIS

**Figure 34**  
**Birchenough Pond Wetland Restoration Project**  
**Proposed Mitigation Projects**

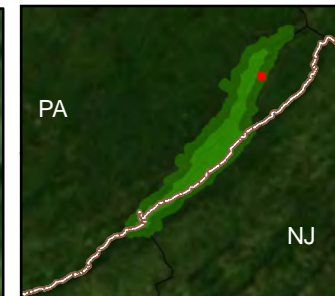
Source: ESRI Streetmap 2006, Penn State 2010,  
ESRI ArcGISonline Map Service 2010,  
PennDOT 2011, USGS 2006,  
NJ DEP 2008, NWI 1977

Projection: NAD 83 UTM Zone 18N  
Date: July 2012



0 200 400  
Feet





#### Legend

- Existing Stream / Creek
- ~ Proposed Stream Restoration
- Existing Wetlands
- Proposed Step Pool System / B3 Stream (157 ft)
- Proposed Emergent Wetland Restoration (Conversion) (0.99 Acres)
- Proposed Emergent Wetland Restoration (Grading) (0.37 Acres)
- Proposed Work Area Boundary



Susquehanna to Roseland  
Transmission Line Proposal  
and  
Right-of-Way Request EIS

**Figure 35**  
**Sussex Vo-Tech Pond Wetland Restoration Project**  
**Proposed Mitigation Projects**

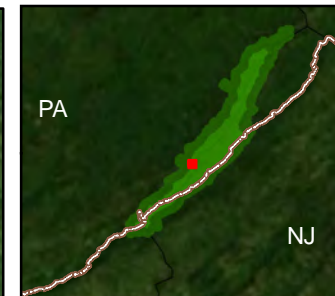
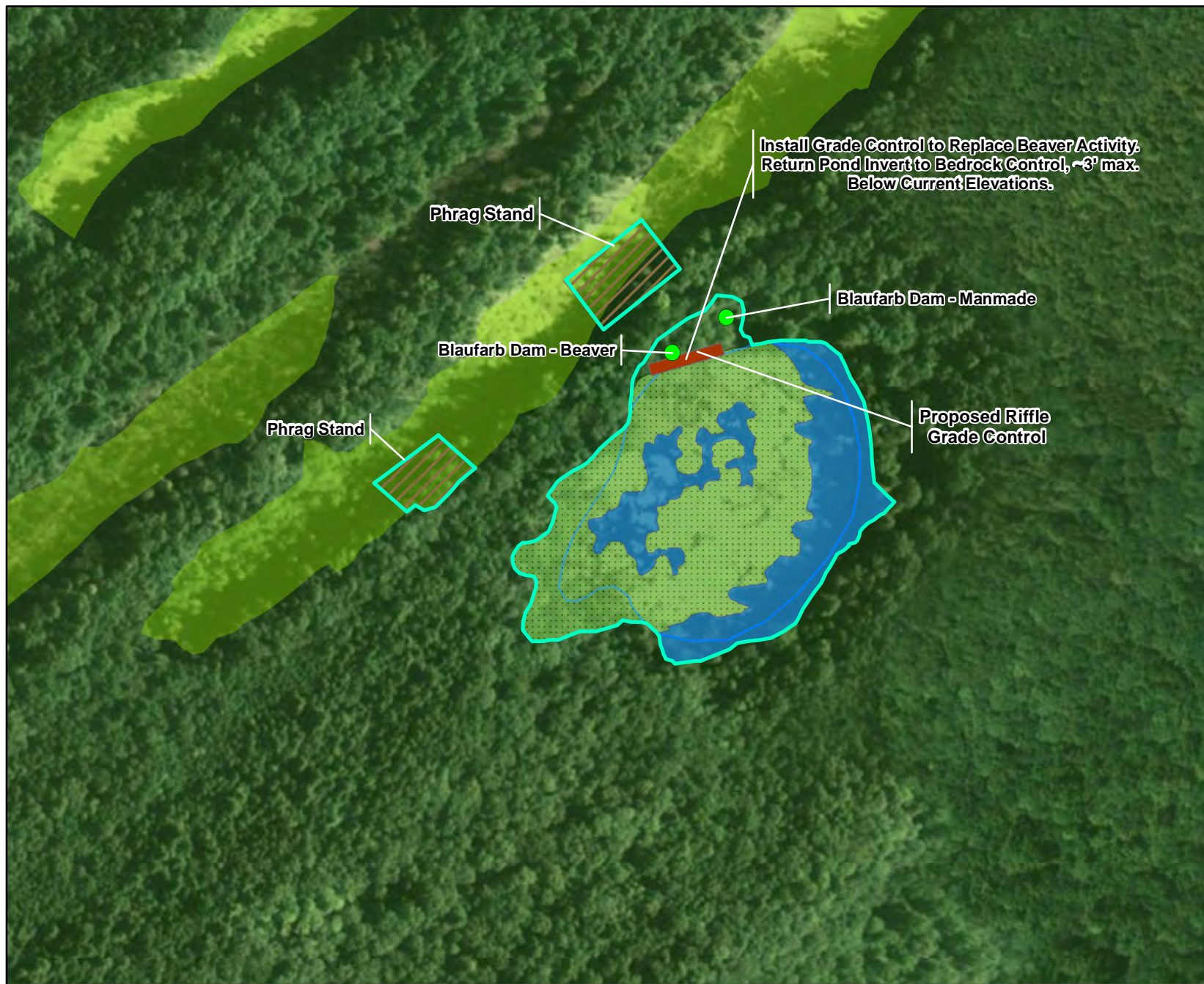
Source: ESRI Streetmap 2006, Penn State 2010,  
ESRI ArcGISonline Map Service 2010,  
PennDOT 2011, USGS 2006,  
NJ DEP 2008, NWI 1977

Projection: NAD 83 UTM Zone 18N  
Date: July 2012



0 60 120  
Feet





#### Legend

- GPS Point Collected in May
- ~ Proposed Stream Restoration
- Existing Stream / Creek
- Existing Open Water
- Existing Wetlands
- Phragmites / Invasive Species Control (0.96 Acres)
- Proposed Riffle Grade Control/Cascade
- Proposed Emergent Wetland Restoration (Conversion) (4.77 Acres)
- Proposed Work Area Boundary



Susquehanna to Roseland  
Transmission Line Proposal  
and  
Right-of-Way Request EIS

**Figure 36**  
**Blaugarb Pond Wetland Restoration Project**  
**Proposed Mitigation Projects**

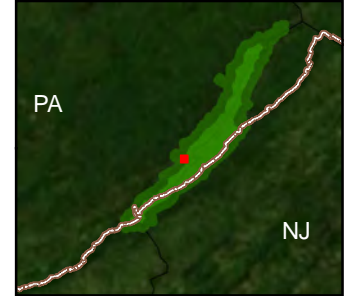
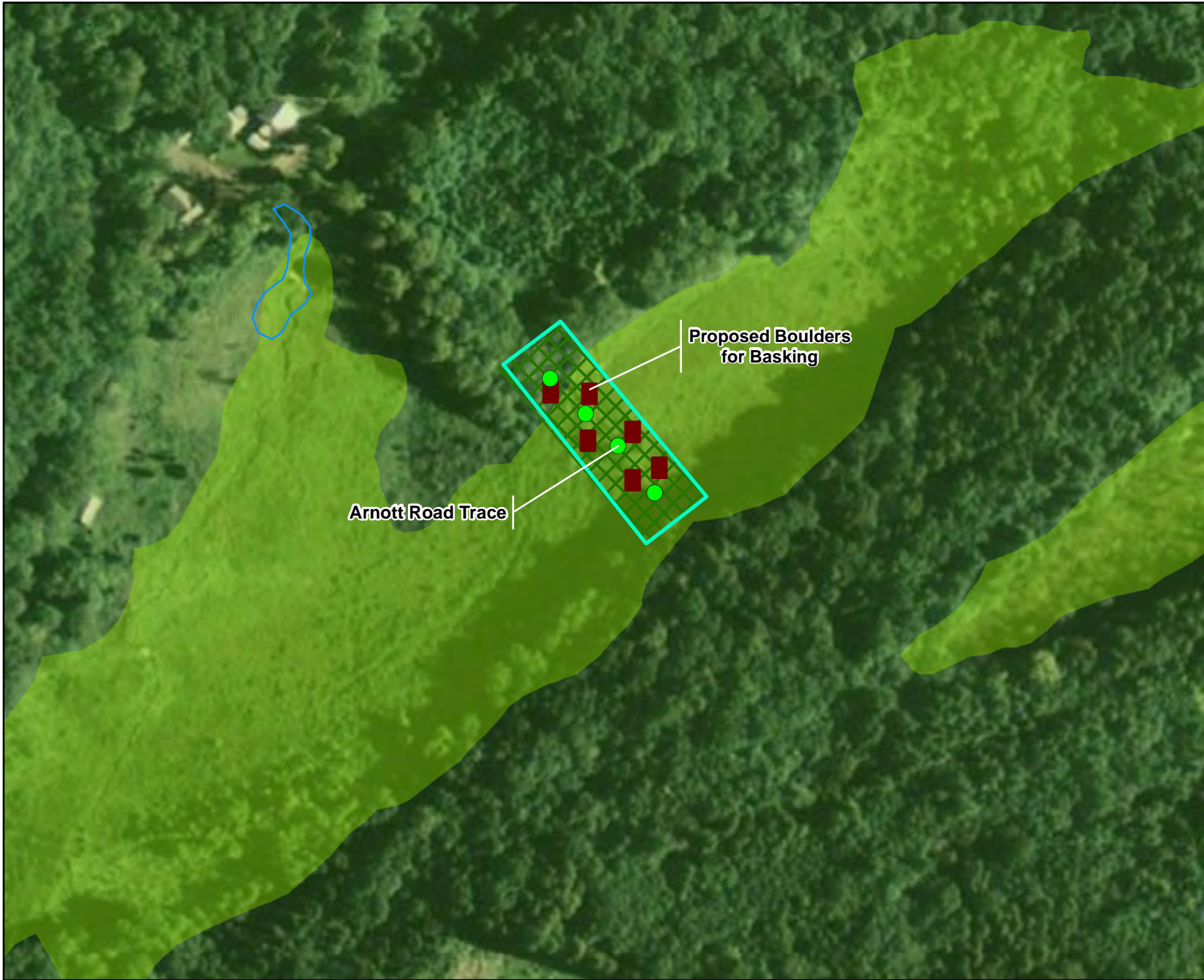
Source: ESRI Streetmap 2006, Penn State 2010,  
ESRI ArcGISonline Map Service 2010,  
PennDOT 2011, USGS 2006,  
NJ DEP 2008, NWI 1977

Projection: NAD 83 UTM Zone 18N  
Date: July 2012



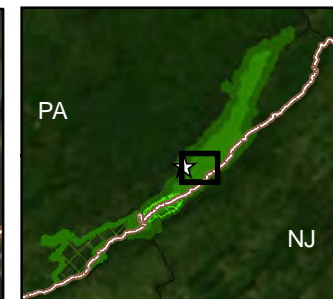
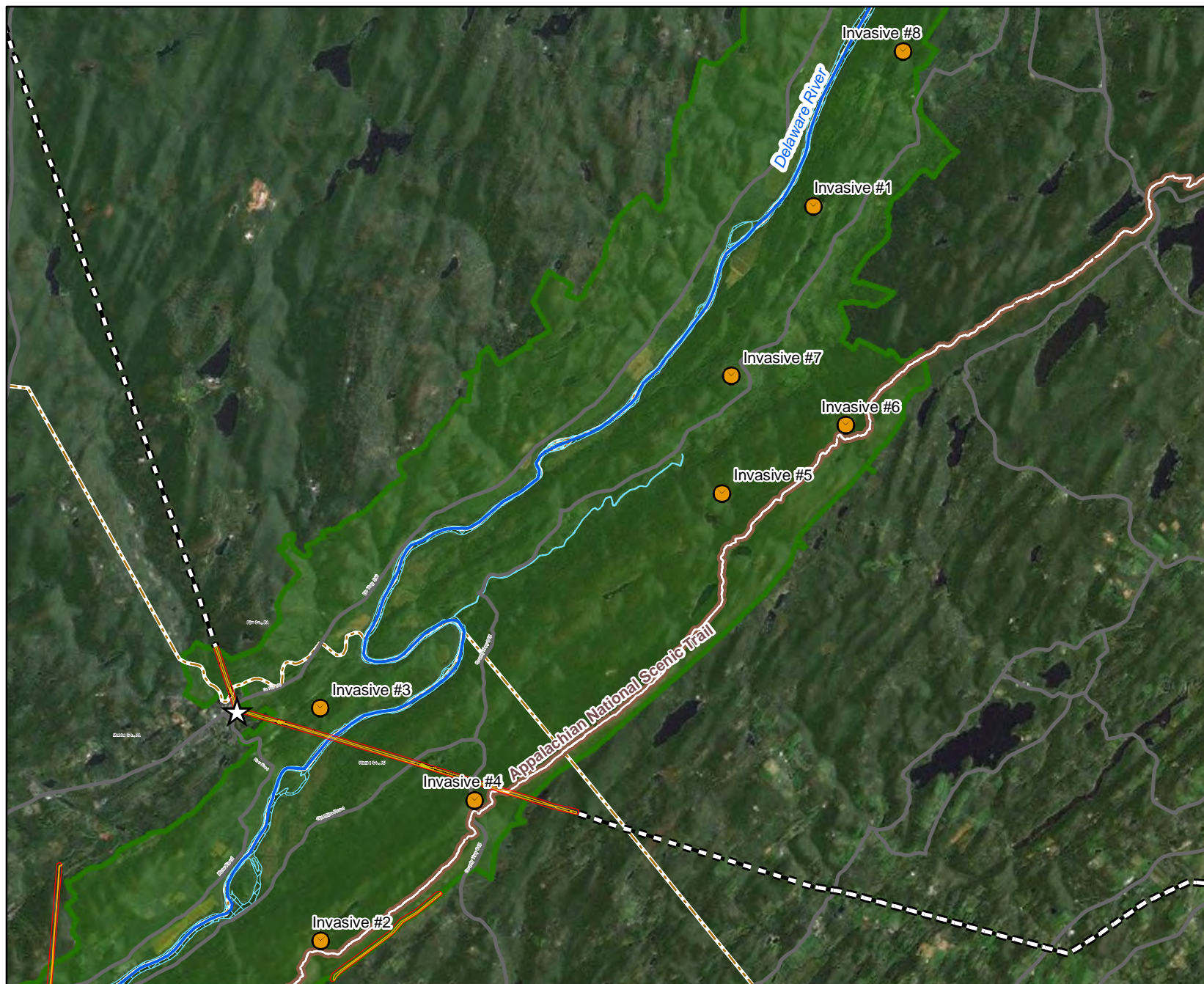
0 130 260  
Feet





- Legend**
- Existing Stream / Creek
  - Wetlands
  - Proposed Wetland Restoration (Grading - 0.25 acres)
  - Proposed Boulders
  - Proposed Work Area Boundary





### Legend

- Location of Priority Invasive Species Removal
- Substation
- Outside Study Area
- Existing ROW in Study Area
- 350 ft Corridor
- Delaware River
- Road
- Delaware Water Gap National Recreation Area
- Wetlands within 350ft buffer
- Wetlands
- County Line



Susquehanna to Roseland  
Transmission Line Proposal  
and  
Right-of-Way Request EIS

**Figure 38**  
**Invasive Plant Species Removal**  
**Proposed Mitigation Project**

Source: ESRI Streetmap 2006, Penn State 2010,  
ESRI ArcGISonline Map Service 2010,  
PennDOT 2011, USGS 2006,  
NJ DEP 2008, NWI 1977

Projection: NAD 83 UTM Zone 18N  
Date: October, 2011



0 2,500 5,000  
Feet