

ATTACHMENT A

FIGURES

This page intentionally left blank

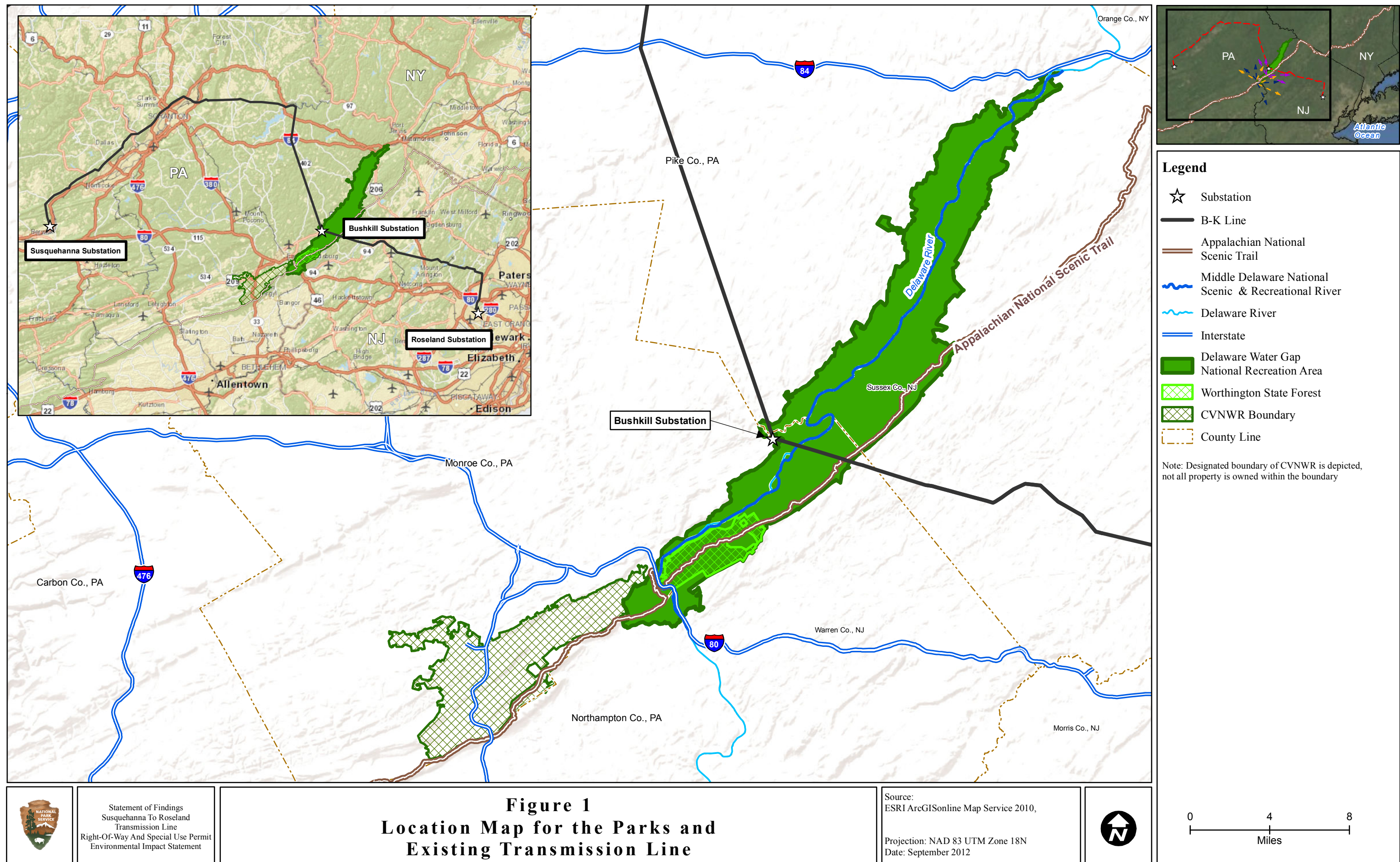
FIGURES

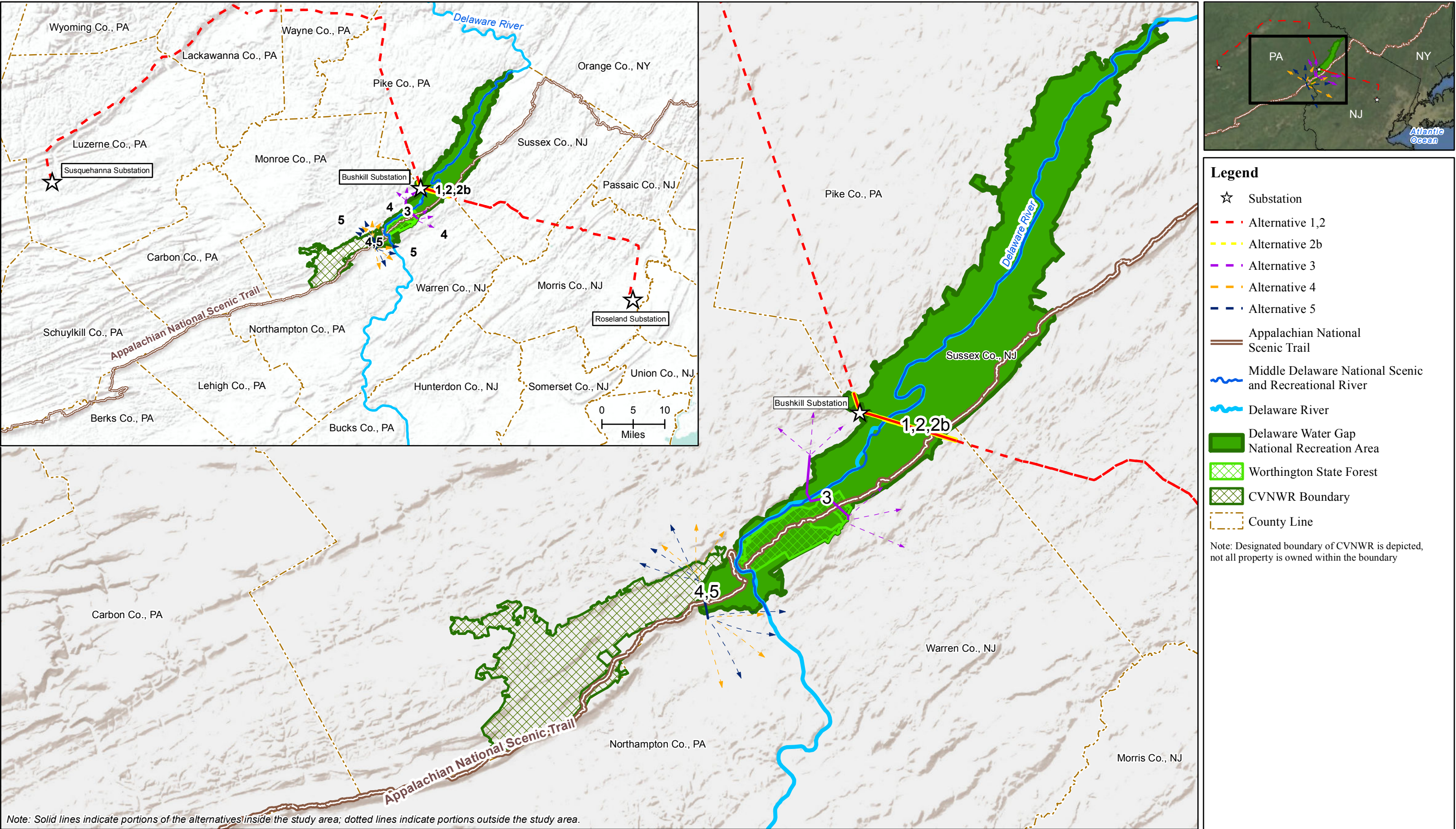
- Figure 1: Location Map for the Parks and Existing Transmission Line
- Figure 2: Alternatives within the Study Area
- Figure 3: Alternative 1 and 2 Wetlands in Pennsylvania
- Figure 4: Alternative 1 and 2 Wetlands in New Jersey
- Figure 5: Alternative 2b Wetlands in Pennsylvania
- Figure 6: Alternative 2b Wetlands in New Jersey
- Figure 7: Alternative 3 Wetlands
- Figure 8: Alternative 4/5 Wetlands
- Figure 9: Alternative 1 and 2 Floodplains in Pennsylvania
- Figure 10: Alternative 1 and 2 Floodplains in New Jersey
- Figure 11: Alternative 2b Floodplains in Pennsylvania
- Figure 12: Alternative 2b Floodplains in New Jersey
- Figure 13: Alternative 3 Floodplains
- Figure 14: Alternative 4/5 Floodplains
- Figure 15: Impacts to Arnott Fen, Alternative 2
- Figure 16: Impacts to Hogback Ridge Wetland, Alternative 2
- Figure 17: Impacts to Van Campen Wetland Complex, Alternative 2
- Figure 18: Impacts to Wetland BB, Alternative 2
- Figure 19: Impacts to Wetland CC, Alternative 2
- Figure 20: Impacts to Wetland 42, Alternative 2
- Figure 21: Impacts to Wetland 45, Alternative 2
- Figure 22: Impacts to Wetland 46, Alternative 2
- Figure 23: Impacts to Wetland 47, Alternative 2
- Figure 24: Watergate and Van Campen Restoration – Proposed Mitigation Project
- Figure 25: Cutoff Road Dam, Van Campen Restoration – Proposed Mitigation Project
- Figure 26: Miller Wetland Restoration – Proposed Mitigation Project
- Figure 27: Peters Valley Culvert and Wetland Restoration– Proposed Mitigation Project
- Figure 28: Peters Valley Culvert Replacement Typical Detail – Proposed Mitigation Project
- Figure 29: Peters Mill Pond Wetland Restoration and Dam Removal – Proposed Mitigation Project
- Figure 30: Peters Valley NJ Route 615 Herpetofauna Connectivity – Proposed Mitigation Project
- Figure 31: UNT to Little Flat Brook Wetland Restoration – Proposed Mitigation Project
- Figure 32: Camp Kittatinny Pond Wetland Restoration – Proposed Mitigation Project
- Figure 33: Camp Kittatinny Pond Wetland Restoration – Proposed Mitigation Project
- Figure 34: Birchenough Pond Wetland Restoration – Proposed Mitigation Project
- Figure 35: Sussex Vo-Tech Pond Wetland Restoration – Proposed Mitigation Project

Figure 36: Blaufarb Pond Wetland Restoration – Proposed Mitigation Project

Figure 37: Community Drive/Arnott Fen Road Wetland Restoration – Proposed Mitigation Project

Figure 38: Invasive Plant Species Removal – Proposed Mitigation Project





Statement of Findings
Susquehanna To Roseland
Transmission Line
Right-Of-Way And Special Use Permit
Environmental Impact Statement

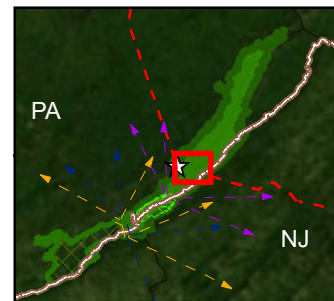
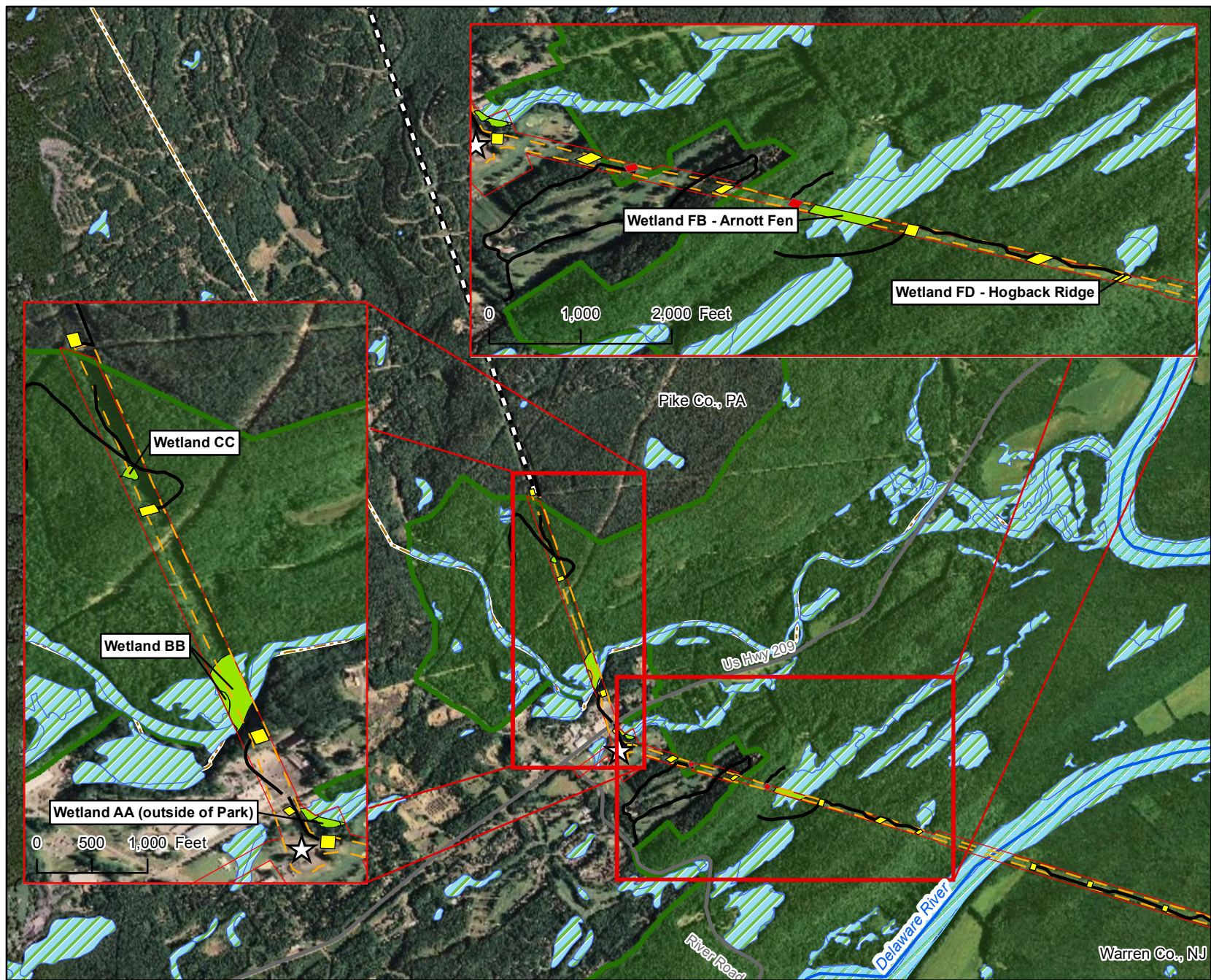
Figure 2
Alternatives within the Study Area

Source:
ESRI ArcGISonline Map Service 2010,
NPS 2012

Projection: NAD 83 UTM Zone 18N
Date: September 2012



0 4 8
Miles



Legend

- ☆ Substation
- Yellow square Crane Pad for Proposed Tower*
- Red square Crane Pad for Existing Tower Removal
- Black dashed line Outside Study Area
- Orange dashed line Existing ROW in Study Area
- Red dashed line Mitigated ROW
- Blue line Delaware River
- Black line Proposed Access Road
- Grey line Road
- Green area Delaware Water Gap
- Dark green area National Recreation Area
- Light green area Wetlands within Mitigated ROW
- Blue hatched area Wetlands
- Orange dashed line County Line

* Crane pads for proposed towers will also be used for the removal of existing towers, where applicable



Statement of Findings
Susquehanna To Roseland
Transmission Line
Right-Of-Way And Special Use Permit
Environmental Impact Statement

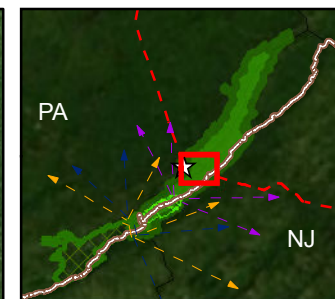
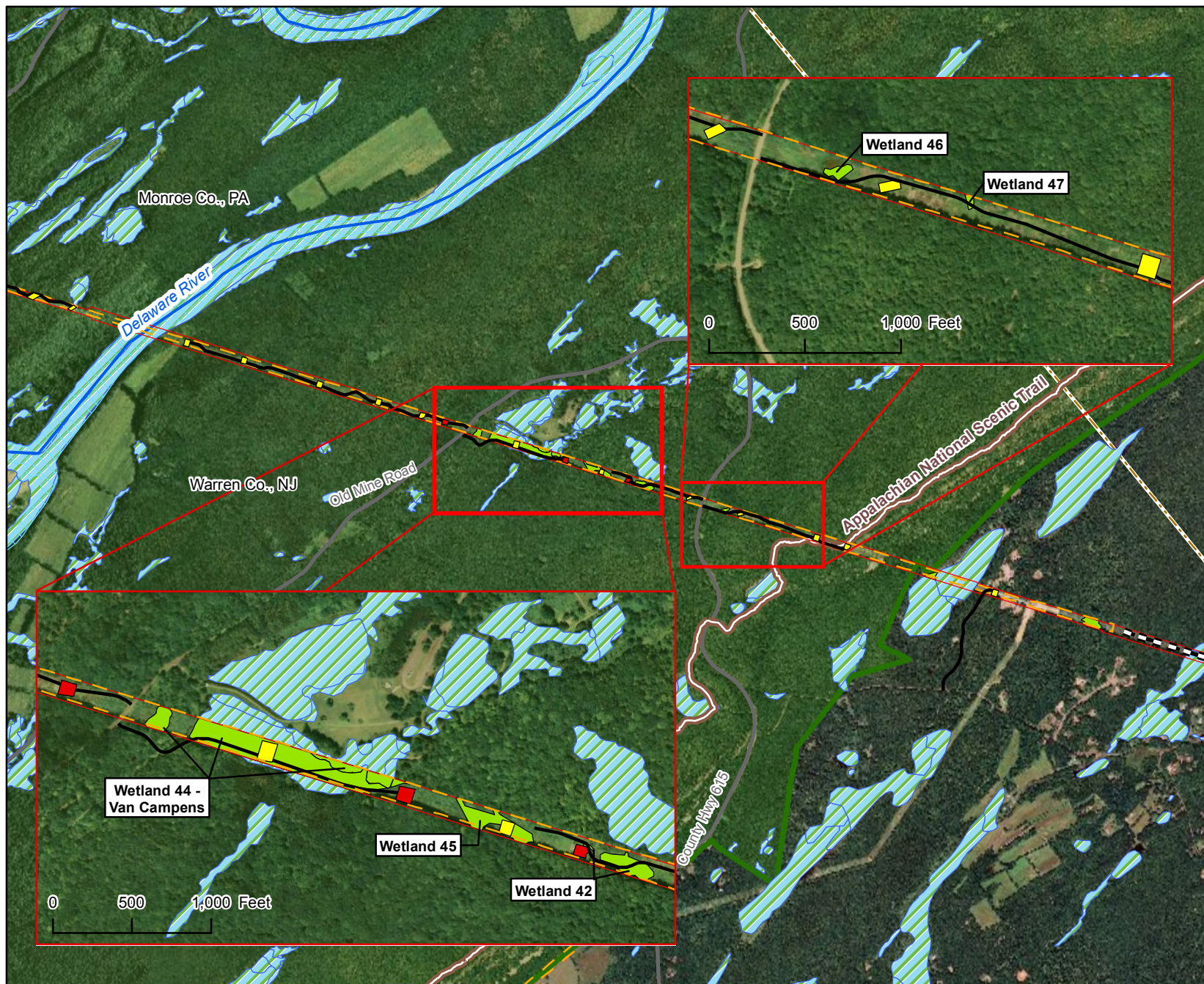
Figure 3
Alternative 1 and 2 Wetlands in Pennsylvania

Source:
ESRI ArcGISOnline Map Service 2010,
NWI 1977, NPS 2012

Projection: NAD 83 UTM Zone 18N
Date: September 2012



0 1,250 2,500
Feet



Legend

- ☆ Substation
- Crane Pad for Proposed Tower*
- Crane Pad for Existing Tower Removal
- == Outside Study Area
- - Existing ROW in Study Area
- - Mitigated ROW
- - Appalachian National Scenic Trail
- ~ Delaware River
- Proposed Access Road
- Road
- Delaware Water Gap
- National Recreation Area
- Wetlands within Mitigated ROW
- Wetlands
- - County Line

* Crane pads for proposed towers will also be used for the removal of existing towers, where applicable



Statement of Findings
Susquehanna To Roseland
Transmission Line
Right-Of-Way And Special Use Permit
Environmental Impact Statement

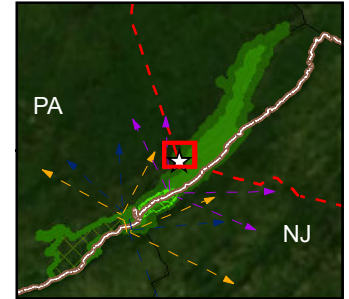
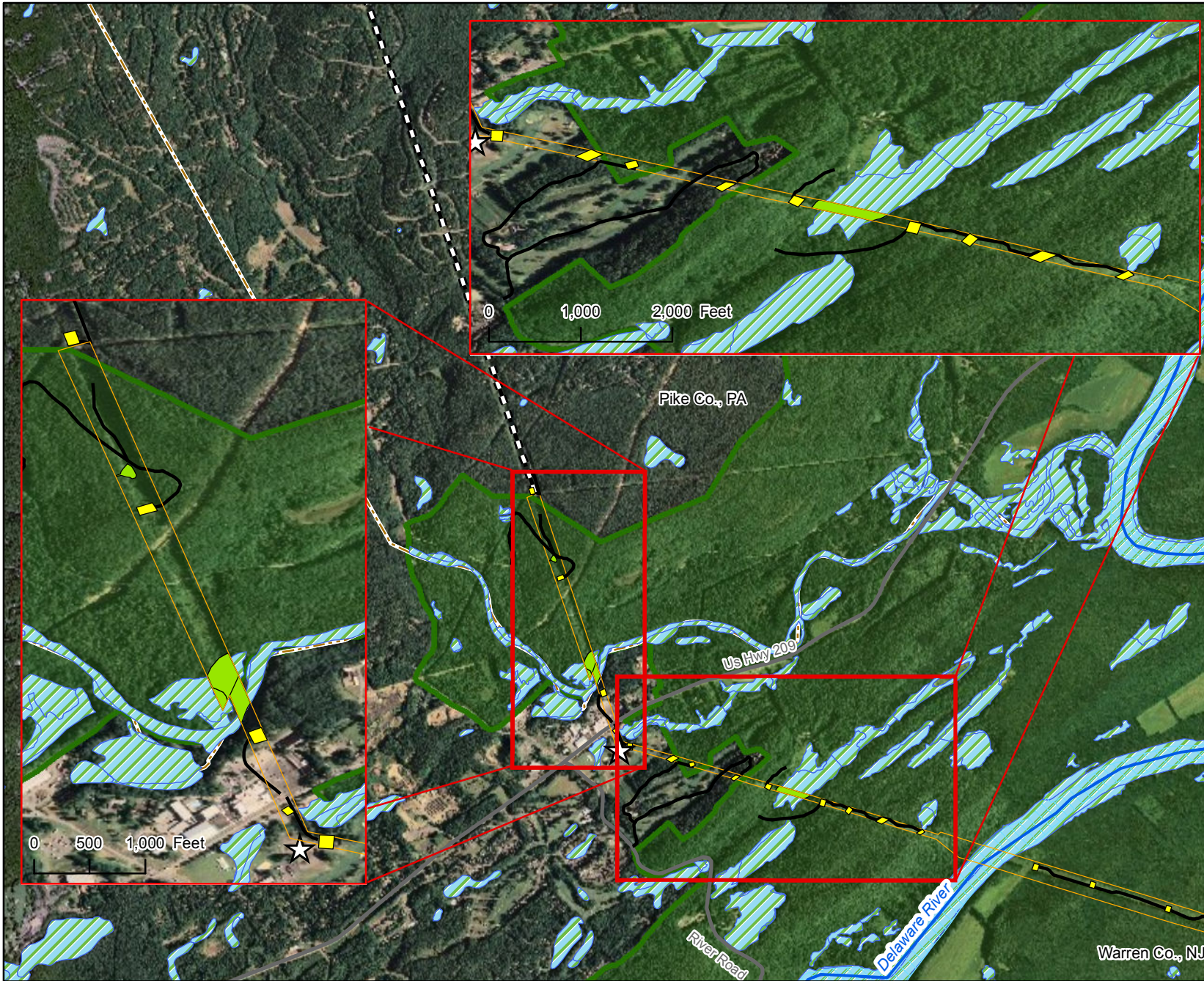
Figure 4
Alternative 1 and 2 Wetlands in New Jersey

Source:
ESRI ArcGISonline Map Service 2010,
NWI 1977, NPS 2012

Projection: NAD 83 UTM Zone 18N
Date: September 2012



0 1,250 2,500
Feet



Legend

- ☆ Substation
- Crane Pad for Proposed Tower*
- Crane Pad for Existing Tower Removal
- = Outside Study Area
- Alternative 2b Corridor
- Appalachian National Scenic Trail
- Delaware River
- Proposed Access Road
- Road
- Delaware Water Gap
- National Recreation Area
- Wetlands in Alternative 2b Corridor
- Wetlands
- County Line

* Crane pads for proposed towers will also be used for the removal of existing towers, where applicable



Statement of Findings
Susquehanna To Roseland
Transmission Line
Right-Of-Way And Special Use Permit
Environmental Impact Statement

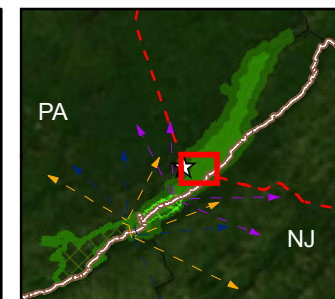
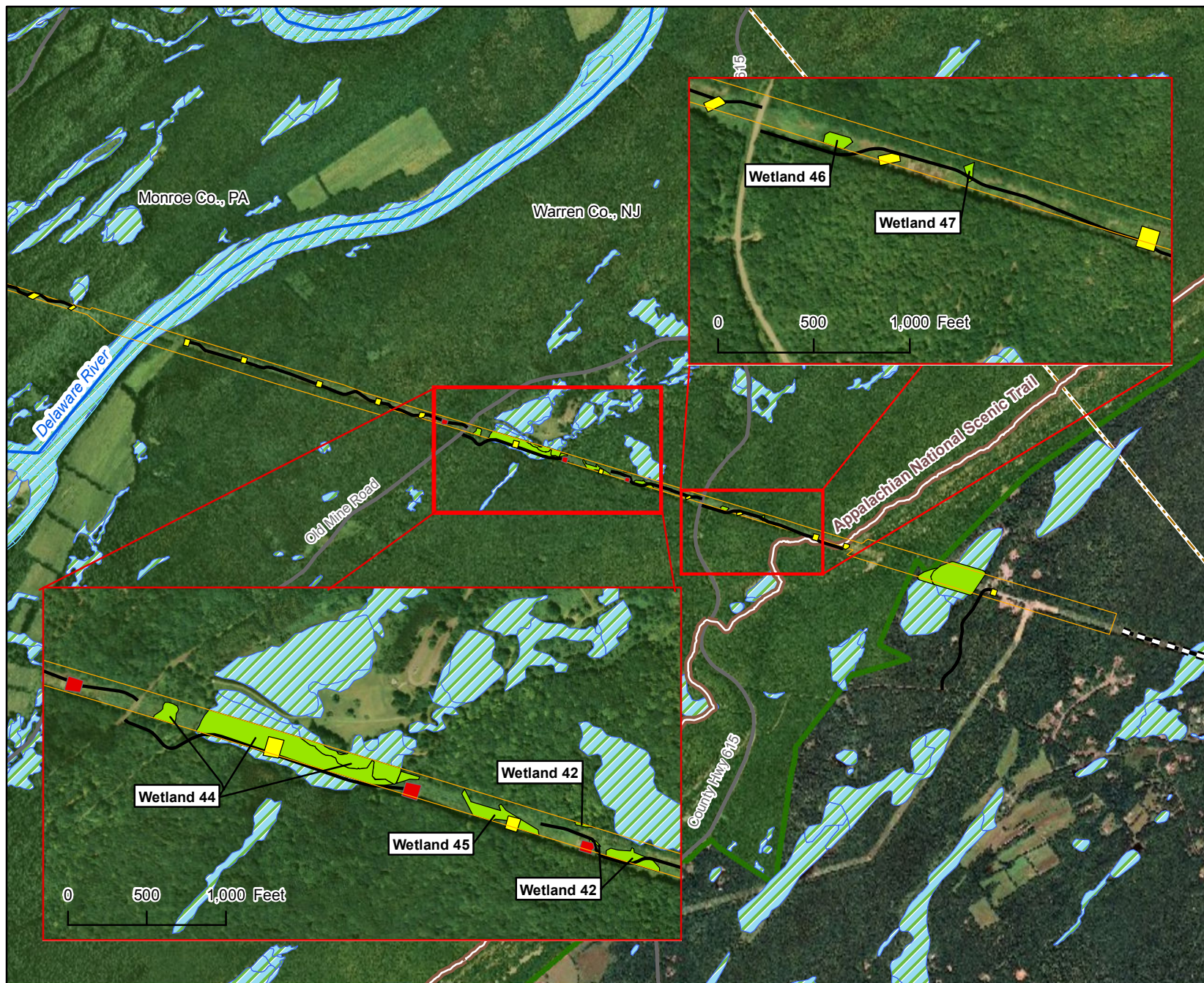
Figure 5
Alternative 2b Wetlands in Pennsylvania

Source:
ESRI ArcGISOnline Map Service 2010,
NWI 1977, NPS 2012

Projection: NAD 83 UTM Zone 18N
Date: September 2012



0 1,250 2,500
Feet



- Legend**
- ☆ Substation
 - Yellow square Crane Pad for Proposed Tower*
 - Red square Crane Pad for Existing Tower Removal
 - Double line Outside Study Area
 - Orange line Alternative 2b Corridor
 - Red line Appalachian National Scenic Trail
 - Blue line Delaware River
 - Black line Proposed Access Road
 - Grey line Road
 - Green area Delaware Water Gap National Recreation Area
 - Light green area Wetlands in Alternative 2b Corridor
 - Blue area Wetlands
 - Dashed line County Line

* Crane pads for proposed towers will also be used for the removal of existing towers, where applicable



Statement of Findings
Susquehanna To Roseland
Transmission Line
Right-Of-Way And Special Use Permit
Environmental Impact Statement

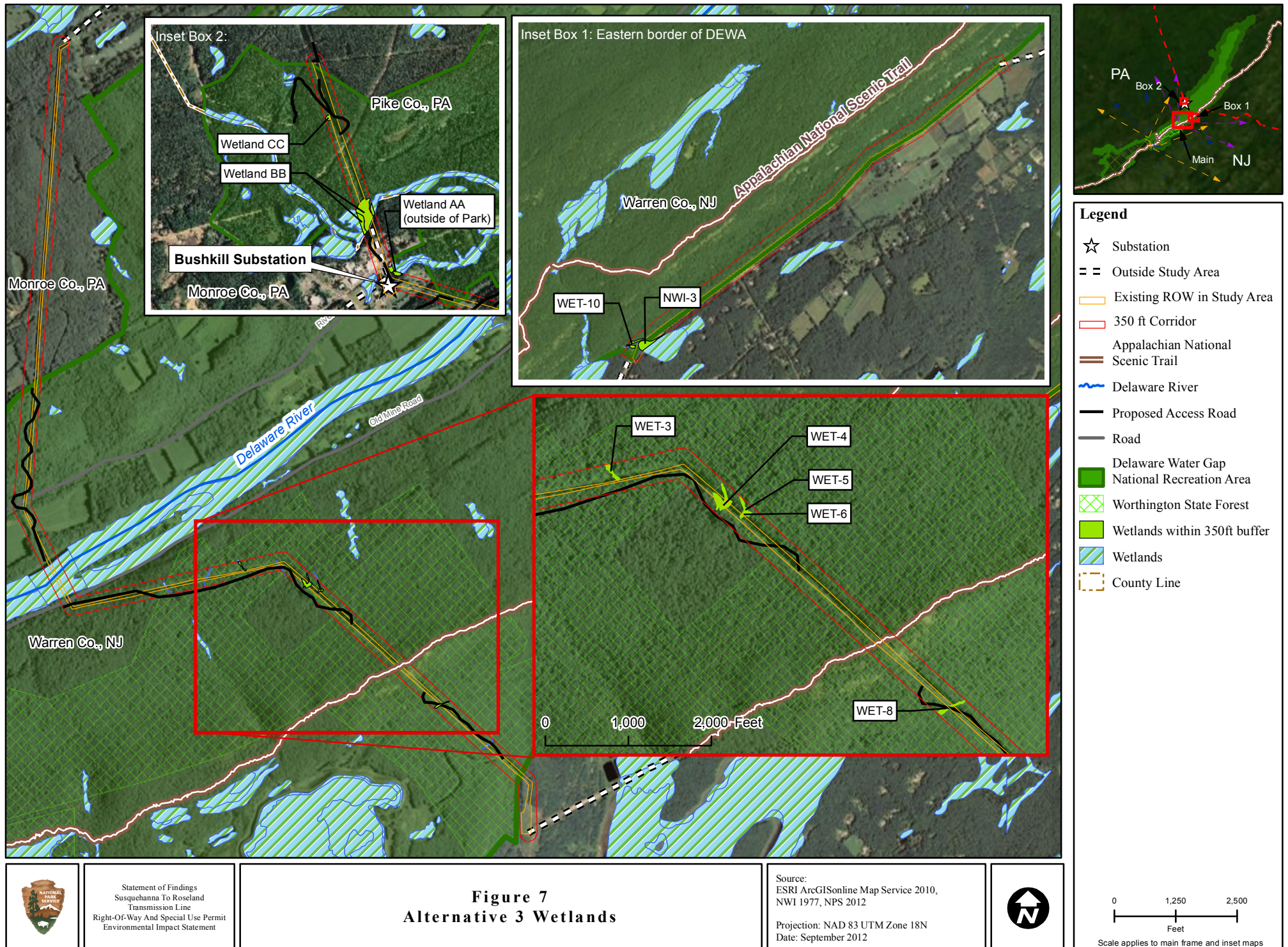
Figure 6
Alternative 2b Wetlands in New Jersey

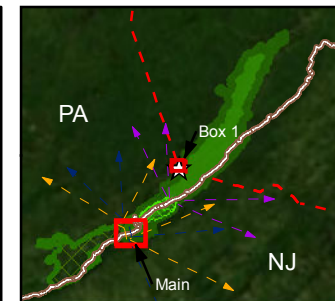
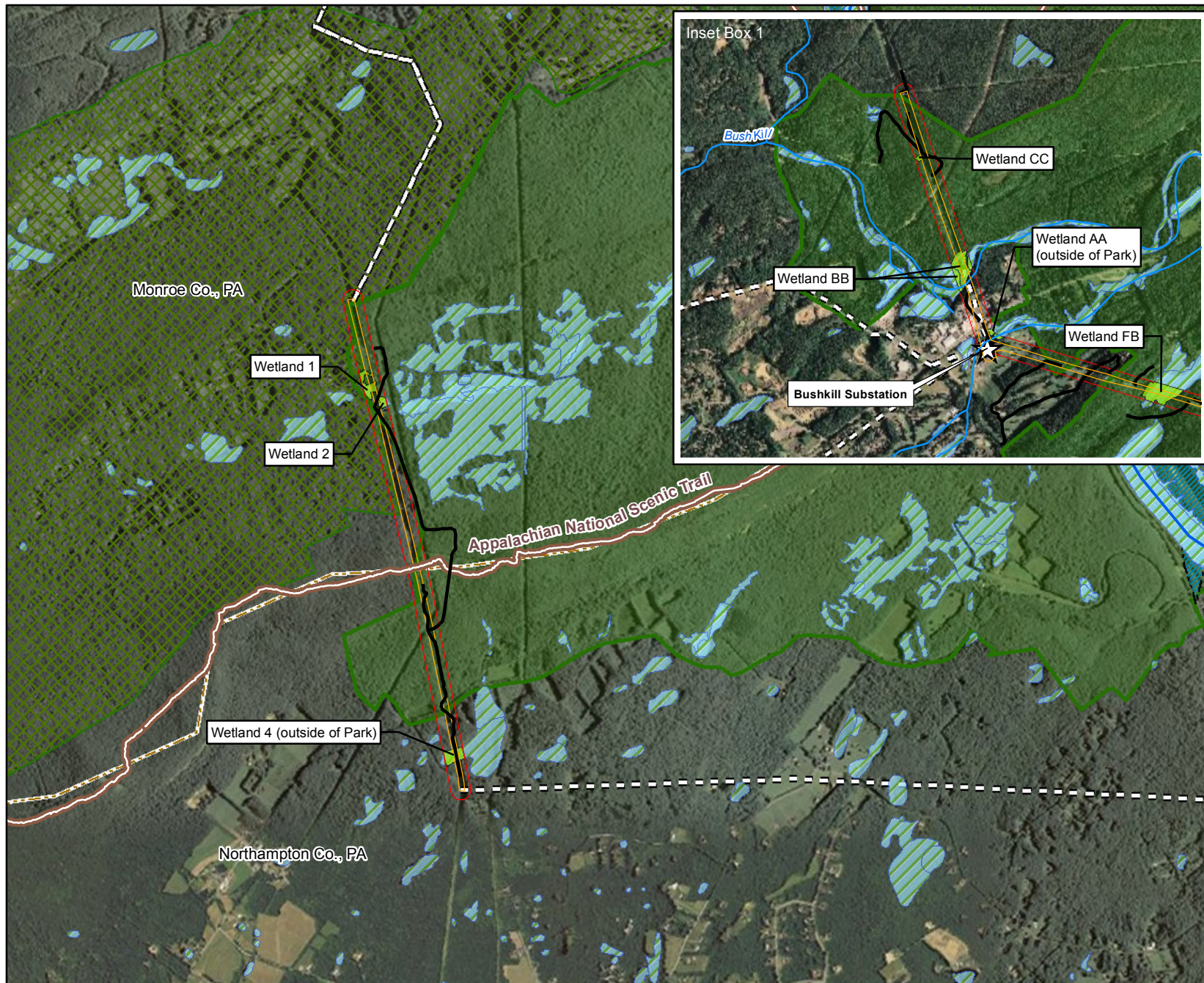
Source:
ESRI ArcGISonline Map Service 2010,
NWI 1977, NPS 2012

Projection: NAD 83 UTM Zone 18N
Date: September 2012



0 1,250 2,500
Feet





Legend

- ☆ Substation
- == Outside Study Area
- Existing ROW in Study Area
- 350 ft Corridor
- Appalachian National Scenic Trail
- River/Stream
- Proposed Access Road
- Delaware Water Gap
- National Recreation Area
- CVNWR Boundary
- Wetlands within 350ft buffer
- Wetlands
- County Line

Note: Designated boundary of CVNWR is depicted, not all property is owned within the boundary

Figure 8
Alternative 4/5 Wetlands



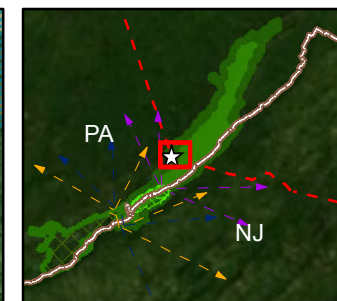
Statement of Findings
Susquehanna To Roseland
Transmission Line
Right-Of-Way And Special Use Permit
Environmental Impact Statement

Source:
ESRI ArcGISOnline Map Service 2010,
NWI 1977, NPS 2012

Projection: NAD 83 UTM Zone 18N
Date: September 2012



0 1,250 2,500
Feet
Scale applies to main frame and inset maps



Legend

- ☆ Substation
- Crane Pad for Proposed Tower*
- Crane Pad for Existing Tower Removal
- = Outside Study Area
- Existing ROW in Study Area
- Mitigated ROW
- Delaware River
- Proposed Access Road
- Road
- Delaware Water Gap National Recreation Area
- Floodplain
- County Line

* Crane pads for proposed towers will also be used for the removal of existing towers, where applicable



Statement of Findings
Susquehanna To Roseland
Transmission Line
Right-Of-Way And Special Use Permit
Environmental Impact Statement

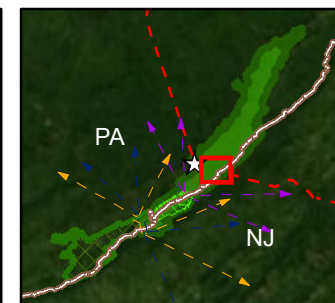
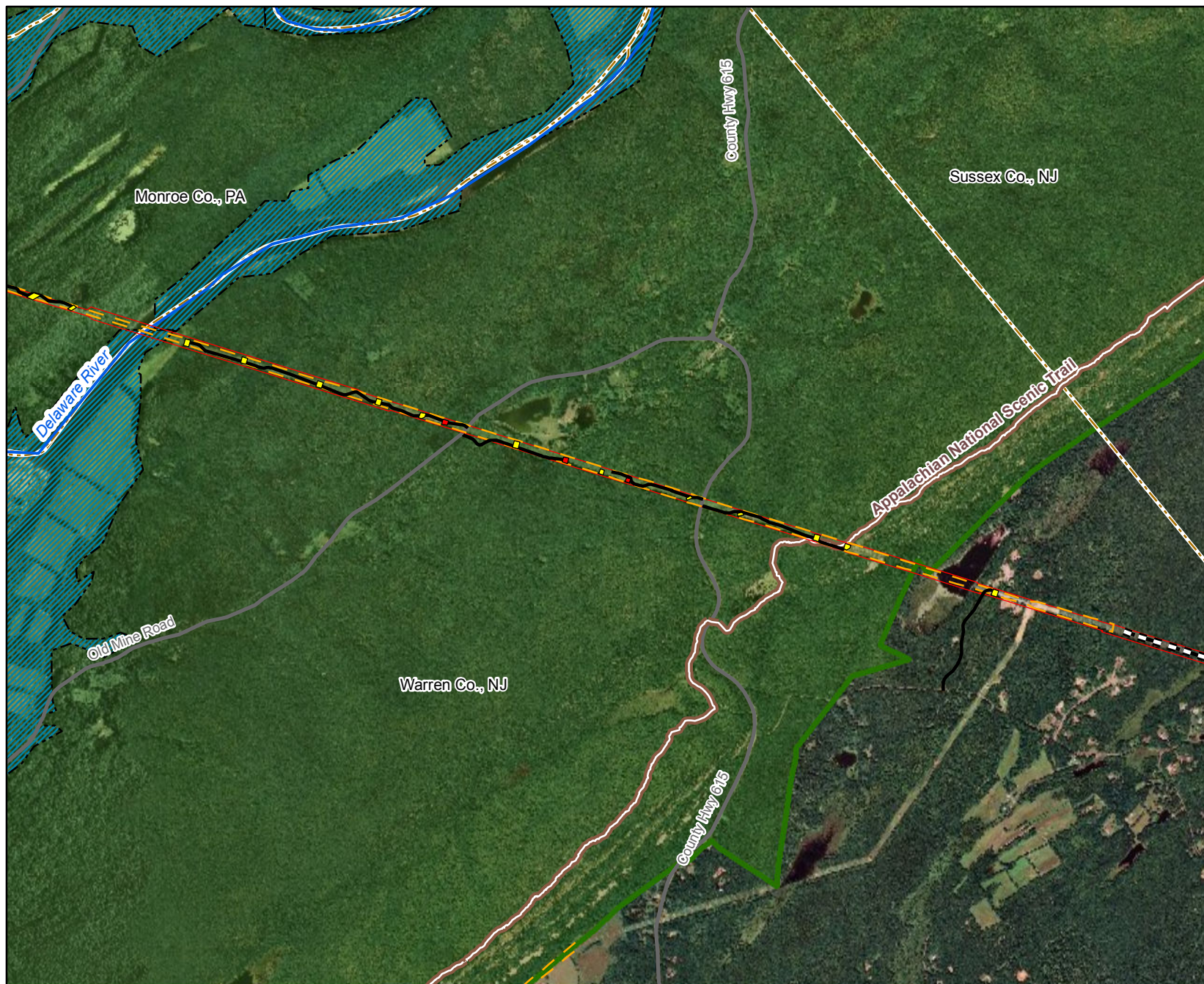
Figure 9
Alternative 1 and 2 Floodplains in Pennsylvania

Source:
ESRI ArcGISOnline Map Service 2010,
NWI 1977, NPS 2012

Projection: NAD 83 UTM Zone 18N
Date: September 2012



0 1,250 2,500
Feet



Legend

- ☆ Substation
- Crane Pad for Proposed Tower*
- Crane Pad for Existing Tower Removal
- = Outside Study Area
- Existing ROW in Study Area
- Mitigated ROW
- Appalachian National Scenic Trail
- Delaware River
- Proposed Access Road
- Road
- Delaware Water Gap
- National Recreation Area
- Floodplain
- County Line

* Crane pads for proposed towers will also be used for the removal of existing towers, where applicable



Statement of Findings
Susquehanna To Roseland
Transmission Line
Right-Of-Way And Special Use Permit
Environmental Impact Statement

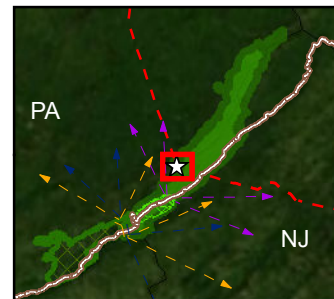
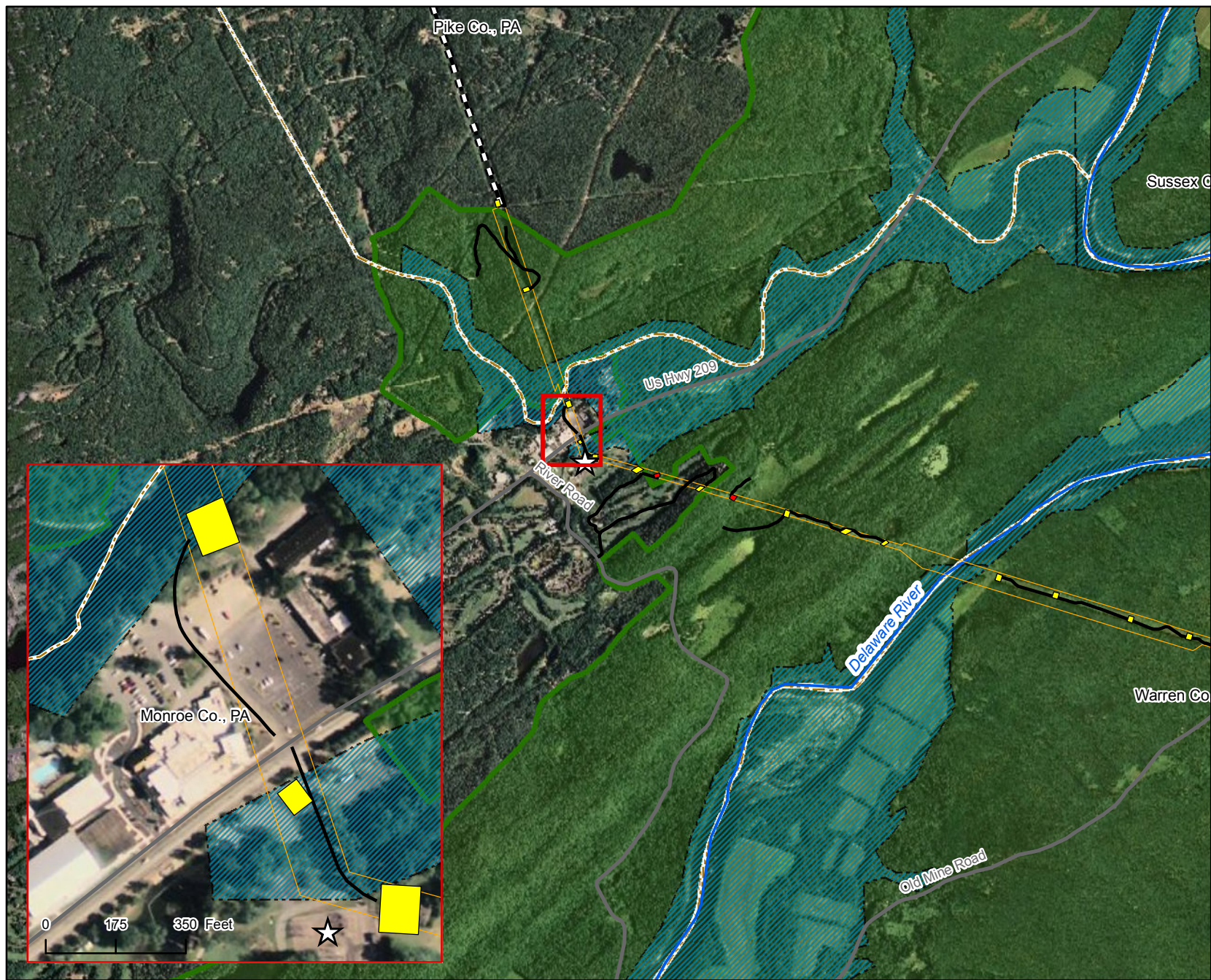
Figure 10
Alternative 1 and 2 Floodplains in New Jersey

Source:
ESRI ArcGISonline Map Service 2010,
NWI 1977, NPS 2012

Projection: NAD 83 UTM Zone 18N
Date: September 2012



0 1,250 2,500
Feet



Legend

- ☆ Substation
- Yellow square Crane Pad for Proposed Tower*
- Red square Crane Pad for Existing Tower Removal
- Double line Outside Study Area
- Orange line Alternative 2b Corridor
- Blue line Delaware River
- Black line Proposed Access Road
- Grey line Road
- Green area Delaware Water Gap National Recreation Area
- Blue hatched area Floodplain
- Dashed line County Line

* Crane pads for proposed towers will also be used for the removal of existing towers, where applicable



Statement of Findings
Susquehanna To Roseland
Transmission Line
Right-Of-Way And Special Use Permit
Environmental Impact Statement

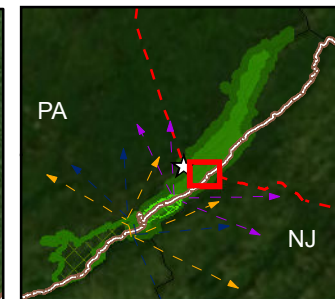
Figure 11
Alternative 2b Floodplains in Pennsylvania

Source:
ESRI ArcGISonline Map Service 2010,
NWI 1977, NPS 2012

Projection: NAD 83 UTM Zone 18N
Date: September 2012



0 1,250 2,500
Feet



Legend

- ☆ Substation
- Yellow square Crane Pad for Proposed Tower*
- Red square Crane Pad for Existing Tower Removal
- Black dashed line Outside Study Area
- Orange line Alternative 2b Corridor
- Blue wavy line Delaware River
- Black line Proposed Access Road
- Grey line Road
- Green area Delaware Water Gap National Recreation Area
- Blue hatched area Floodplain
- Orange dashed line County Line

* Crane pads for proposed towers will also be used for the removal of existing towers, where applicable

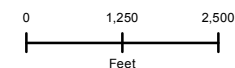


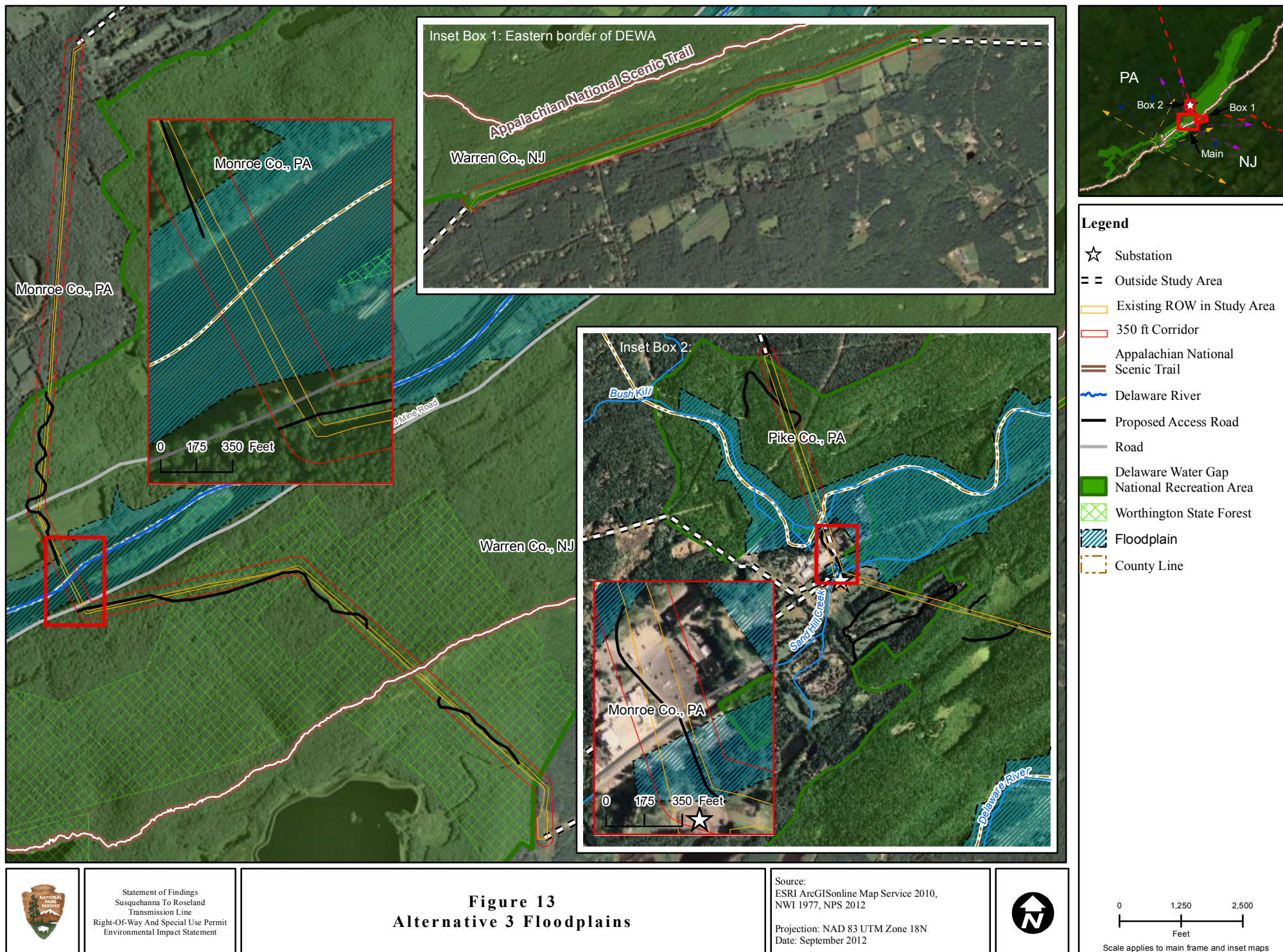
Statement of Findings
Susquehanna To Roseland
Transmission Line
Right-Of-Way And Special Use Permit
Environmental Impact Statement

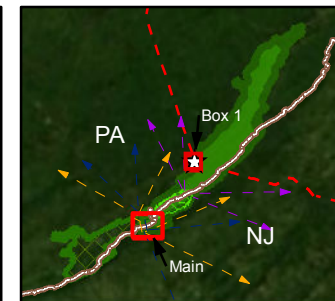
Figure 12
Alternative 2b Floodplains in New Jersey

Source:
ESRI ArcGISonline Map Service 2010,
NWI 1977, NPS 2012

Projection: NAD 83 UTM Zone 18N
Date: September 2012







Legend

- ☆ Substation
- == Outside Study Area
- Existing ROW in Study Area
- 350 ft Corridor
- Appalachian National Scenic Trail
- River/Stream
- Proposed Access Road
- Roads
- Delaware Water Gap
- National Recreation Area
- CVNWR Boundary
- Floodplain
- County Line

Note: Designated boundary of CVNWR is depicted, not all property is owned within the boundary



Statement of Findings
Susquehanna To Roseland
Transmission Line
Right-Of-Way And Special Use Permit
Environmental Impact Statement

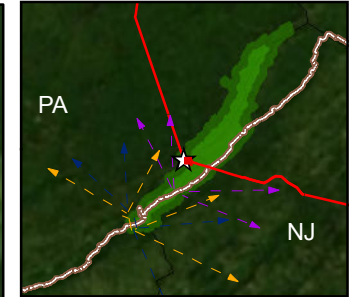
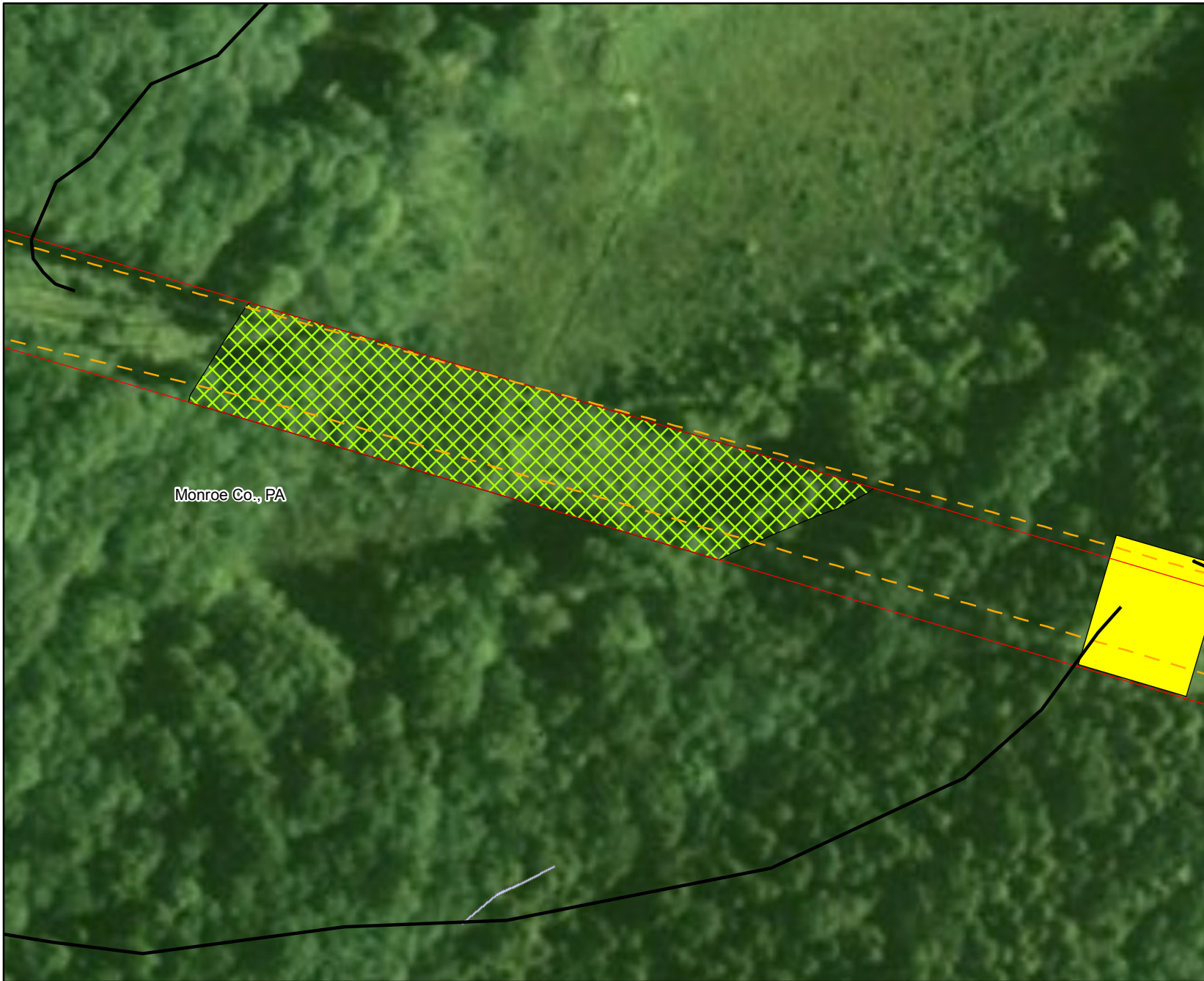
Figure 14
Alternative 4/5 Floodplains

Source:
ESRI ArcGISonline Map Service 2010,
NWI 1977, NPS 2012

Projection: NAD 83 UTM Zone 18N
Date: September 2012



0 1,250 2,500
Feet
Scale applies to main frame and inset map



Legend

- ☆ Substation
- Yellow rectangle Crane Pad for Proposed Tower*
- Red rectangle Crane Pad for Existing Tower Removal
- Black dashed line Outside Study Area
- Orange dashed line Existing ROW in Study Area
- Red solid line Mitigated ROW
- Brown line Appalachian National Scenic Trail
- Blue wavy line Delaware River
- Black solid line Proposed Access Road
- Grey solid line Road
- Green rectangle Delaware Water Gap
- Green rectangle National Recreation Area
- Orange dashed line County Line
- Blue hatched rectangle Delaware River
- Blue rectangle Waterbody
- Wetlands within Mitigated ROW**
 - Green hatched rectangle Forested Wetland (PFO)
 - Blue hatched rectangle Emergent Wetland (PEM)
 - Yellow hatched rectangle Emergent / Scrub - Shrub Wetland (PEM/PSS)

* Crane pads for proposed towers will also be used for the removal of existing towers, where applicable



Statement of Findings
Susquehanna To Roseland
Transmission Line
Right-Of-Way And Special Use Permit
Environmental Impact Statement

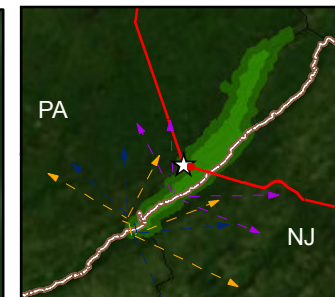
**Figure 15 - Impacts to Arnott Fen Wetland
Alternative 2 Wetlands in Pennsylvania**

Source:
ESRI ArcGISonline Map Service 2010,
NWI 1977, NPS 2012

Projection: NAD 83 UTM Zone 18N
Date: September 2012



0 50 100
Feet



Legend

- ☆ Substation
- Yellow square Crane Pad for Proposed Tower*
- Red square Crane Pad for Existing Tower Removal
- Black line Outside Study Area
- Dashed orange line Existing ROW in Study Area
- Solid red line Mitigated ROW
- Green line Appalachian National Scenic Trail
- Blue wavy line Delaware River
- Black line Proposed Access Road
- Grey line Road
- Green square Delaware Water Gap National Recreation Area
- Dashed orange line County Line
- Blue hatched square Delaware River
- Blue square Waterbody
- Wetlands within Mitigated ROW**
- Green hatched square Forested Wetland (PFO)
- Blue hatched square Emergent Wetland (PEM)
- Green hatched square Emergent / Scrub - Shrub Wetland (PEM/PSS)

* Crane pads for proposed towers will also be used for the removal of existing towers, where applicable

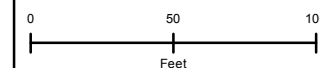


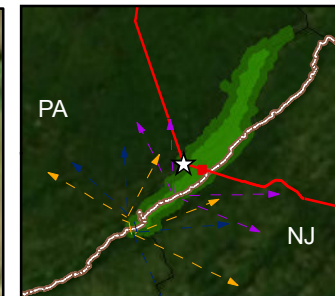
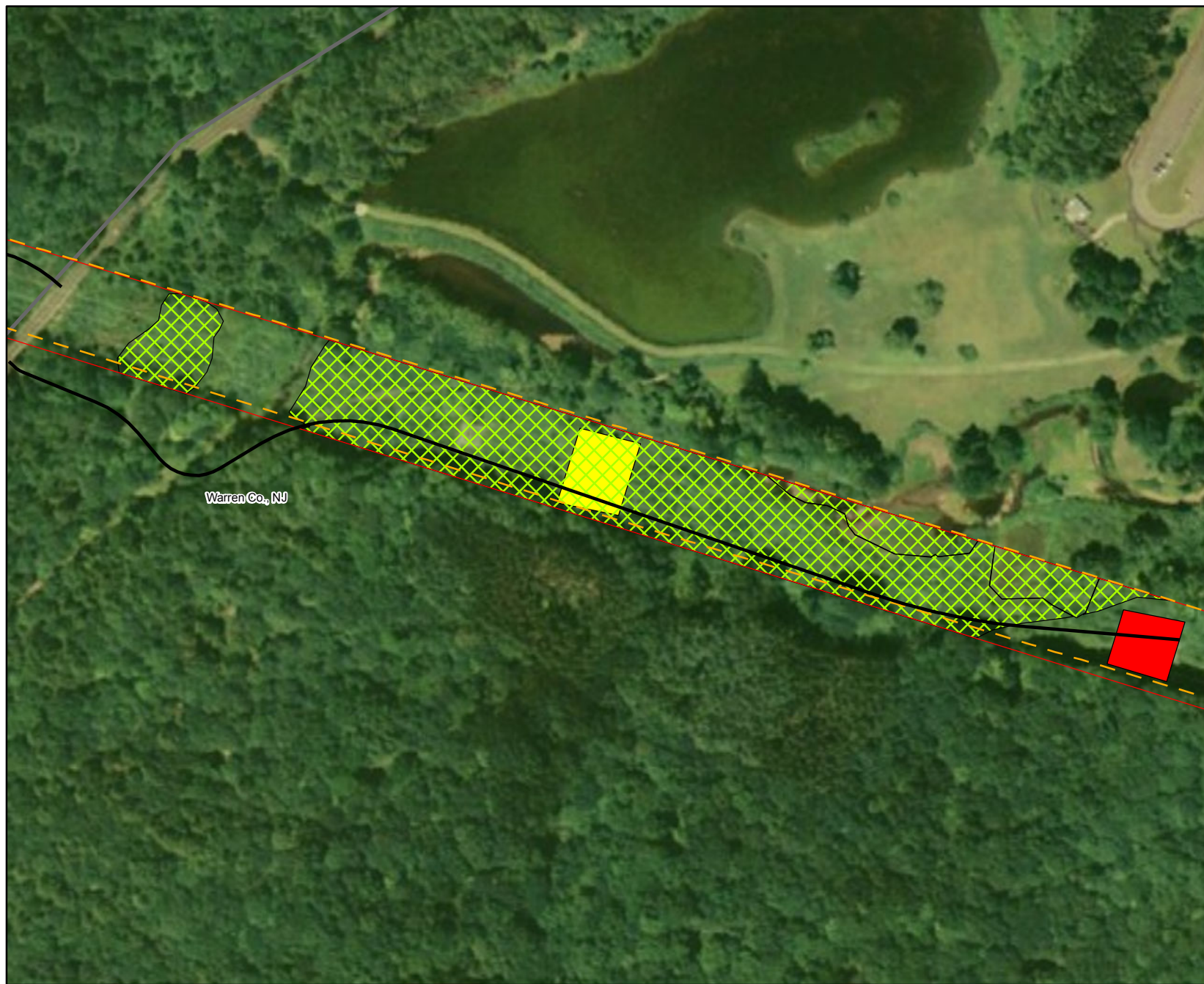
Statement of Findings
Susquehanna To Roseland
Transmission Line
Right-Of-Way And Special Use Permit
Environmental Impact Statement

**Figure 16 - Impacts to Hogback Ridge Wetland
Alternative 2 Wetlands in Pennsylvania**

Source:
ESRI ArcGISonline Map Service 2010,
NWI 1977, NPS 2012

Projection: NAD 83 UTM Zone 18N
Date: September 2012





- Legend**
- ☆ Substation
 - Yellow square Crane Pad for Proposed Tower*
 - Red square Crane Pad for Existing Tower Removal
 - Outside Study Area
 - - - Existing ROW in Study Area
 - Red line Mitigated ROW
 - Appalachian National Scenic Trail
 - Blue line Delaware River
 - Black line Proposed Access Road
 - Grey line Road
 - Green area Delaware Water Gap
 - Green area National Recreation Area
 - Dashed orange line County Line
 - Blue hatched area Delaware River
 - Blue area Waterbody
- Wetlands within Mitigated ROW**
- Green hatched area Forested Wetland (PFO)
 - Blue hatched area Emergent Wetland (PEM)
 - Yellow hatched area Emergent / Scrub - Shrub Wetland (PEM/PSS)

* Crane pads for proposed towers will also be used for the removal of existing towers, where applicable



Statement of Findings
Susquehanna To Roseland
Transmission Line
Right-Of-Way And Special Use Permit
Environmental Impact Statement

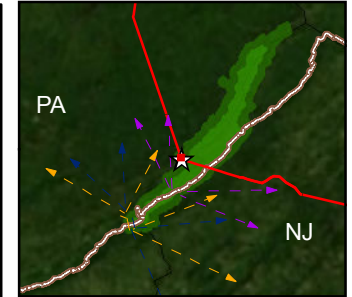
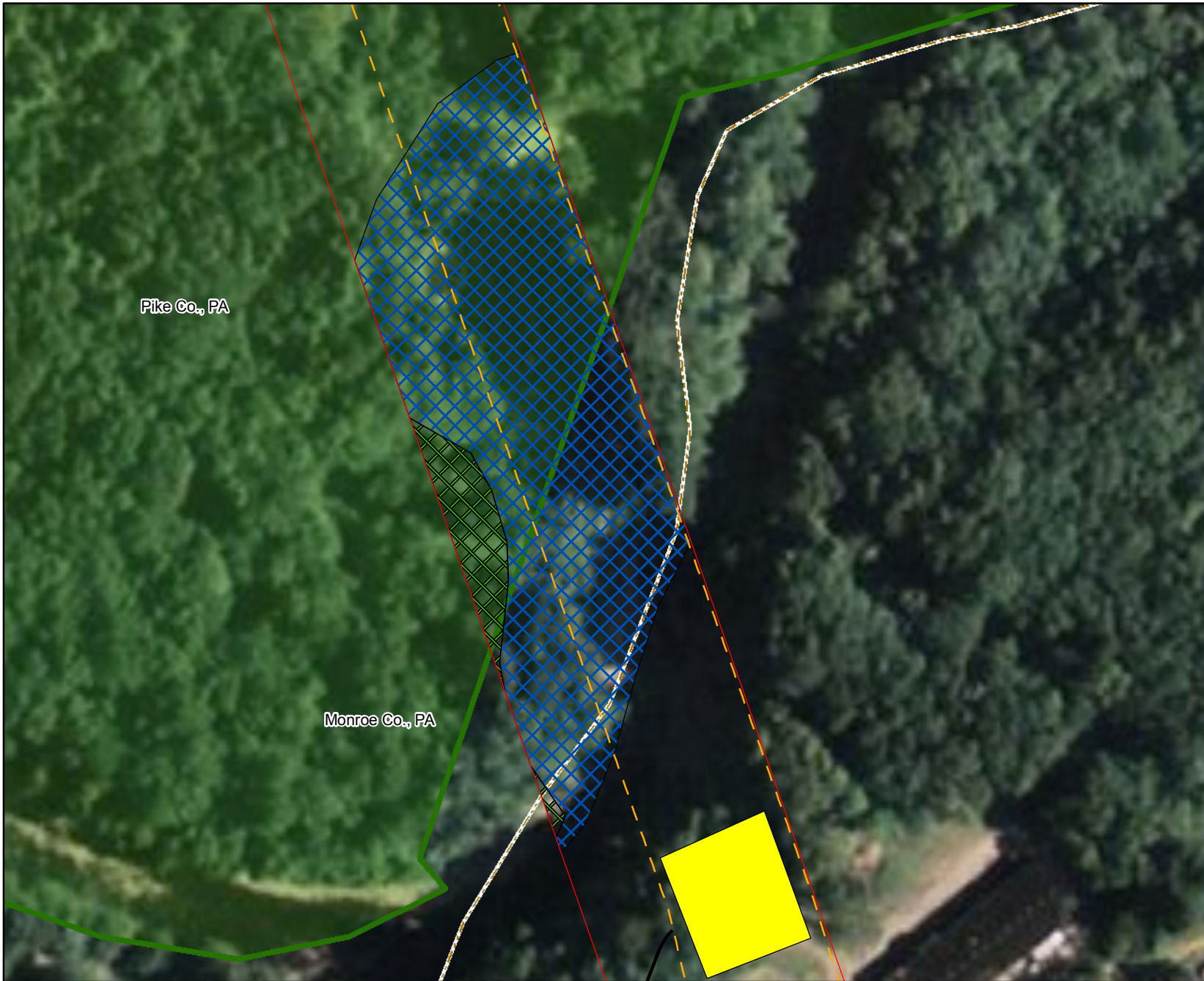
**Figure 17 - Impacts to Wetland 44 - Van Campens
Alternative 2 Wetlands in New Jersey**

Source:
ESRI ArcGISonline Map Service 2010,
NWI 1977, NPS 2012

Projection: NAD 83 UTM Zone 18N
Date: September 2012



0 50 100
Feet



Legend

- ☆ Substation
 - Yellow square Crane Pad for Proposed Tower*
 - Red square Crane Pad for Existing Tower Removal
 - Red dashed line Outside Study Area
 - Orange dashed line Existing ROW in Study Area
 - Red solid line Mitigated ROW
 - Brown line Appalachian National Scenic Trail
 - Blue line Delaware River
 - Black line Proposed Access Road
 - Grey line Road
 - Green line Delaware Water Gap
 - Green area National Recreation Area
 - Dashed line County Line
 - Blue line Delaware River
 - Blue area Waterbody
- Wetlands within Mitigated ROW**
- Green cross-hatched area Forested Wetland (PFO)
 - Blue cross-hatched area Emergent Wetland (PEM)
 - Yellow cross-hatched area Emergent / Scrub - Shrub Wetland (PEM/PSS)

* Crane pads for proposed towers will also be used for the removal of existing towers, where applicable



Statement of Findings
Susquehanna To Roseland
Transmission Line
Right-Of-Way And Special Use Permit
Environmental Impact Statement

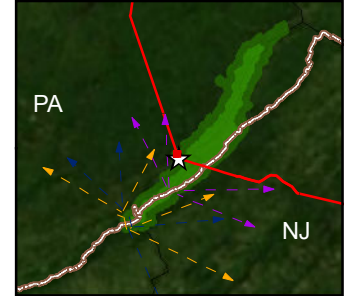
**Figure 18 - Impacts to Wetland BB
Alternative 2 Wetlands in Pennsylvania**

Source:
ESRI ArcGISonline Map Service 2010,
NWI 1977, NPS 2012

Projection: NAD 83 UTM Zone 18N
Date: September 2012



0 50 100
Feet



Legend

- ☆ Substation
- Yellow rectangle Crane Pad for Proposed Tower*
- Red rectangle Crane Pad for Existing Tower Removal
- Black dashed line Outside Study Area
- Orange dashed line Existing ROW in Study Area
- Red dashed line Mitigated ROW
- Brown line Appalachian National Scenic Trail
- Blue line Delaware River
- Black line Proposed Access Road
- Grey line Road
- Green rectangle Delaware Water Gap
- Green rectangle National Recreation Area
- Orange dashed line County Line
- Blue hatched rectangle Delaware River
- Blue rectangle Waterbody
- Wetlands within Mitigated ROW**
- Green hatched rectangle Forested Wetland (PFO)
- Blue hatched rectangle Emergent Wetland (PEM)
- Yellow hatched rectangle Emergent / Scrub - Shrub Wetland (PEM/PSS)

* Crane pads for proposed towers will also be used for the removal of existing towers, where applicable



Statement of Findings
Susquehanna To Roseland
Transmission Line
Right-Of-Way And Special Use Permit
Environmental Impact Statement

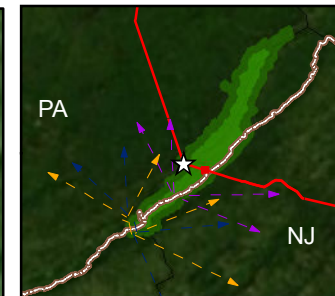
**Figure 19 - Impacts to Wetland CC
Alternative 2 Wetlands in New Jersey**

Source:
ESRI ArcGISonline Map Service 2010,
NWI 1977, NPS 2012

Projection: NAD 83 UTM Zone 18N
Date: September 2012



0 50 100
Feet



- Legend**
- ☆ Substation
 - Yellow square Crane Pad for Proposed Tower*
 - Red square Crane Pad for Existing Tower Removal
 - Black dashed line Outside Study Area
 - Orange dashed line Existing ROW in Study Area
 - Red dashed line Mitigated ROW
 - Brown line Appalachian National Scenic Trail
 - Blue wavy line Delaware River
 - Black line Proposed Access Road
 - Grey line Road
 - Green square Delaware Water Gap
 - Green square National Recreation Area
 - Orange dashed line County Line
 - Blue cross-hatched square Delaware River
 - Blue square Waterbody
 - Wetlands within Mitigated ROW**
 - Green cross-hatched square Forested Wetland (PFO)
 - Blue cross-hatched square Emergent Wetland (PEM)
 - Yellow cross-hatched square Emergent / Scrub - Shrub Wetland (PEM/PSS)

* Crane pads for proposed towers will also be used for the removal of existing towers, where applicable



Statement of Findings
Susquehanna To Roseland
Transmission Line
Right-Of-Way And Special Use Permit
Environmental Impact Statement

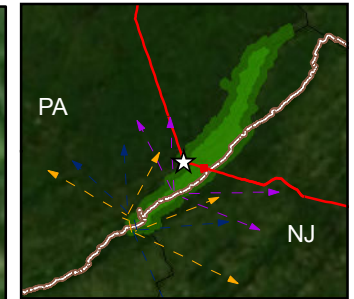
**Figure 20 - Impacts to Wetland 42
Alternative 2 Wetlands in New Jersey**

Source:
ESRI ArcGISonline Map Service 2010,
NWI 1977, NPS 2012

Projection: NAD 83 UTM Zone 18N
Date: September 2012



0 50 100
Feet



Legend

- ☆ Substation
- Yellow square Crane Pad for Proposed Tower*
- Red square Crane Pad for Existing Tower Removal
- Double line Outside Study Area
- Dashed orange line Existing ROW in Study Area
- Solid red line Mitigated ROW
- Brown line Appalachian National Scenic Trail
- Blue wavy line Delaware River
- Black line Proposed Access Road
- Grey line Road
- Green square Delaware Water Gap National Recreation Area
- Dashed orange line County Line
- Blue hatched square Delaware River
- Blue square Waterbody
- Wetlands within Mitigated ROW**
- Green hatched square Forested Wetland (PFO)
- Blue hatched square Emergent Wetland (PEM)
- Yellow hatched square Emergent / Scrub - Shrub Wetland (PEM/PSS)

* Crane pads for proposed towers will also be used for the removal of existing towers, where applicable



Statement of Findings
Susquehanna To Roseland
Transmission Line
Right-Of-Way And Special Use Permit
Environmental Impact Statement

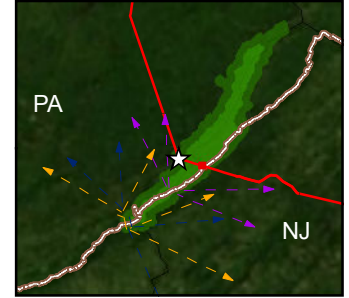
**Figure 21 - Impacts to Wetland 45
Alternative 2 Wetlands in New Jersey**

Source:
ESRI ArcGISOnline Map Service 2010,
NWI 1977, NPS 2012

Projection: NAD 83 UTM Zone 18N
Date: September 2012



0 50 100
Feet



Legend

- ☆ Substation
- Yellow square Crane Pad for Proposed Tower*
- Red square Crane Pad for Existing Tower Removal
- Black dashed line Outside Study Area
- Orange dashed line Existing ROW in Study Area
- Red dashed line Mitigated ROW
- Brown line Appalachian National Scenic Trail
- Blue wavy line Delaware River
- Black line Proposed Access Road
- Grey line Road
- Green area Delaware Water Gap National Recreation Area
- Orange dashed line County Line
- Blue hatched area Delaware River
- Blue area Waterbody
- Wetlands within Proposed ROW**
 - Green hatched area Forested Wetland (PFO)
 - Blue hatched area Emergent Wetland (PEM)
 - Yellow hatched area Emergent / Scrub - Shrub Wetland (PEM/PSS)

* Crane pads for proposed towers will also be used for the removal of existing towers, where applicable

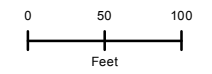


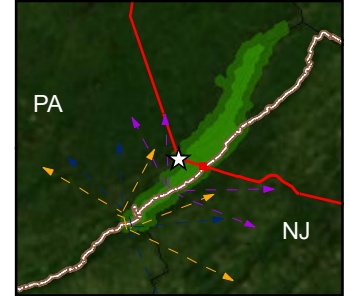
Statement of Findings
Susquehanna To Roseland
Transmission Line
Right-Of-Way And Special Use Permit
Environmental Impact Statement

**Figure 22 - Impacts to Wetland 46
Alternative 2 Wetlands in New Jersey**

Source:
ESRI ArcGISonline Map Service 2010,
NWI 1977, NPS 2012

Projection: NAD 83 UTM Zone 18N
Date: September 2012





Legend

- ☆ Substation
- Crane Pad for Proposed Tower*
- Crane Pad for Existing Tower Removal
- = Outside Study Area
- Existing ROW in Study Area
- Mitigated ROW
- Appalachian National Scenic Trail
- Delaware River
- Proposed Access Road
- Road
- Delaware Water Gap National Recreation Area
- Delaware River
- Waterbody
- Wetlands within Mitigated ROW**
- Forested Wetland (PFO)
- Emergent Wetland (PEM)
- Emergent / Scrub - Shrub Wetland (PEM/PSS)

* Crane pads for proposed towers will also be used for the removal of existing towers, where applicable

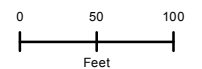


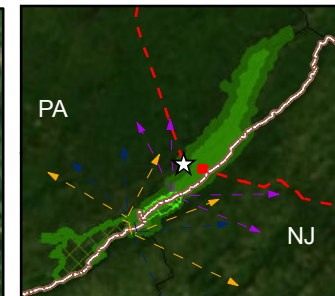
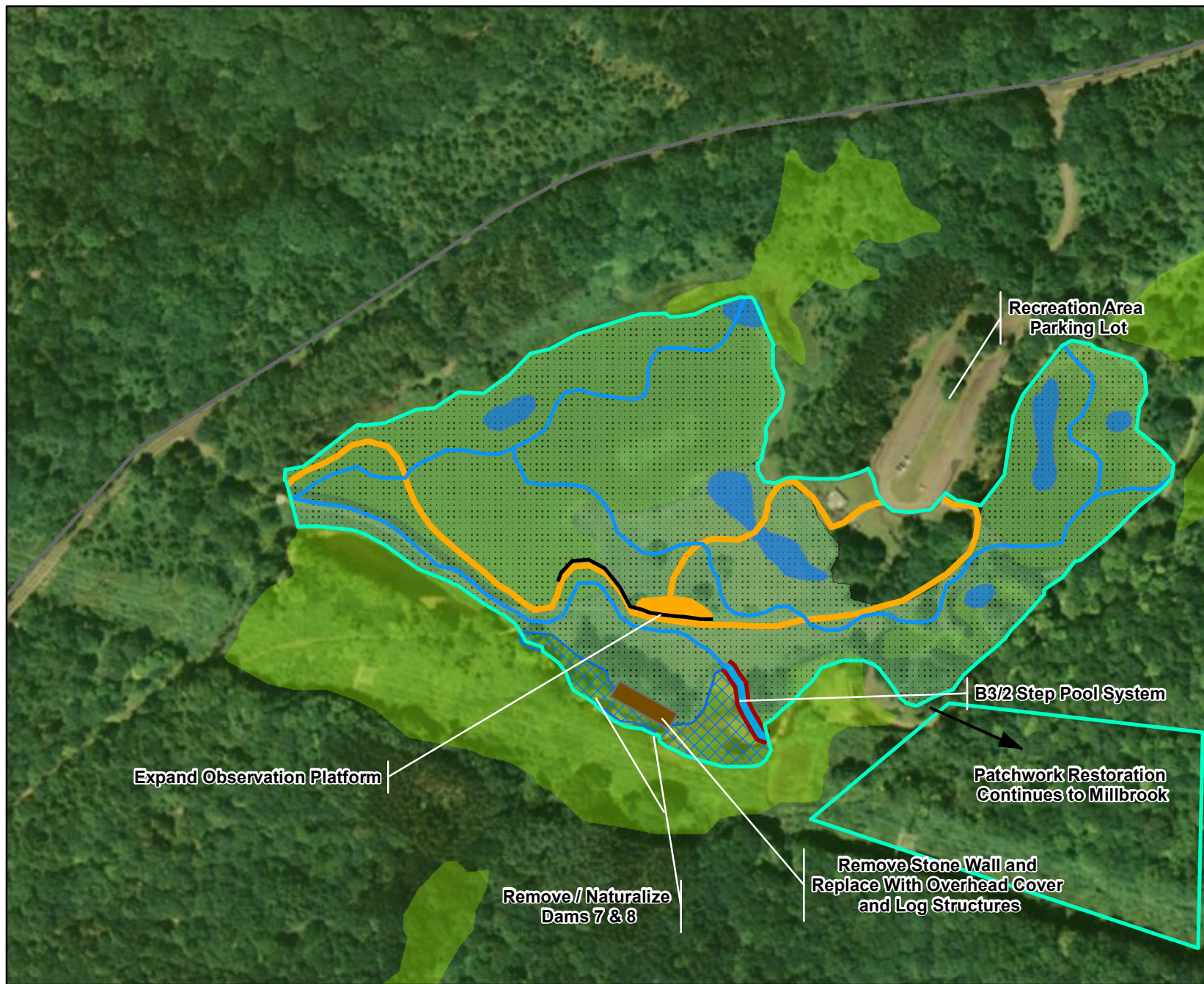
Statement of Findings
Susquehanna To Roseland
Transmission Line
Right-Of-Way And Special Use Permit
Environmental Impact Statement

**Figure 23 - Impacts to Wetland 47
Alternative 2 Wetlands in New Jersey**

Source:
ESRI ArcGISonline Map Service 2010,
NWI 1977, NPS 2012

Projection: NAD 83 UTM Zone 18N
Date: September 2012





Legend

- Proposed Stream Restoration
- Proposed B3/2 Stream
- Existing Wetlands
- Proposed Wetland Restoration (17.85 Acres)
- Proposed Open Water Habitat
- Proposed Side Channel Habitat (0.91 Acres)
- Proposed ADA Flyfishing Area
- Proposed ADA Boardwalk
- Proposed Work Area Boundary

Note:

- Mitigation boundary extends beyond map view



Statement of Findings
Susquehanna To Roseland
Transmission Line
Right-Of-Way And Special Use Permit
Environmental Impact Statement

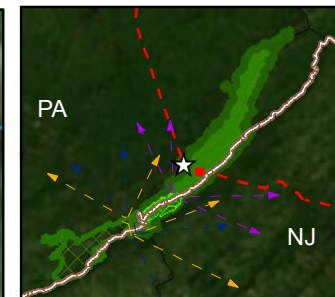
Figure 24
Watergate and Van Campens Restoration Project
Proposed Mitigation Projects

Source:
ESRI ArcGISonline Map Service 2010,
NWI 1977, NPS 2012

Projection: NAD 83 UTM Zone 18N
Date: September 2012



0 140 280
Feet



Legend

- Existing Stream / Creek
- Wetlands
- ▨ Stream Channel Restoration (Passive)
- ▭ Proposed Work Area Boundary

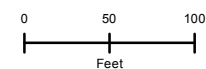


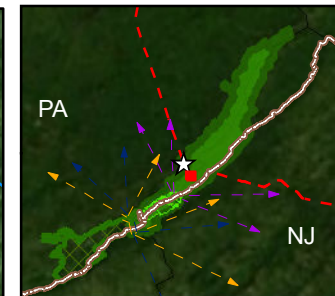
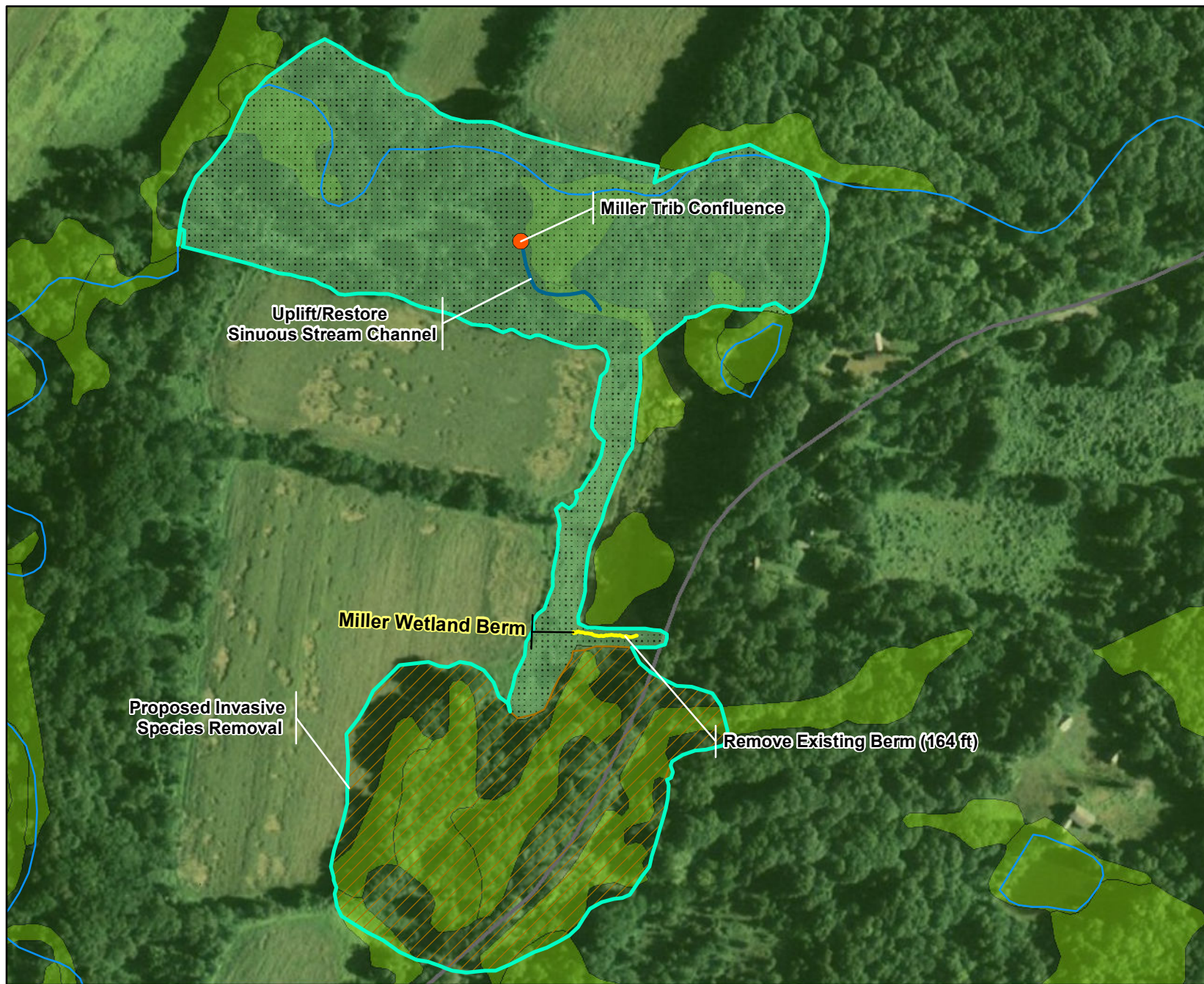
Statement of Findings
Susquehanna To Roseland
Transmission Line
Right-Of-Way And Special Use Permit
Environmental Impact Statement

Figure 25
Cutoff Road Dam, Van Campens Restoration Project
Proposed Mitigation Projects

Source:
ESRI ArcGISonline Map Service 2010,
NWI 1977, NPS 2012

Projection: NAD 83 UTM Zone 18N
Date: September 2012





Legend

- GPS Point Collected in June
- WetlandMitigation_GPSLine
- Existing Stream / Creek
- ~ Sinuous Stream Channel
- Existing Wetlands
- Proposed Emergent Wetland Restoration (13.16 Acres)
- ▨ Proposed Invasive Species Control (11.61 Acres)
- Proposed Work Area Boundary



Statement of Findings
Susquehanna To Roseland
Transmission Line
Right-Of-Way And Special Use Permit
Environmental Impact Statement

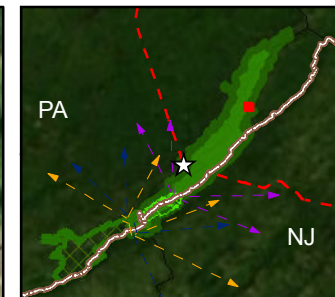
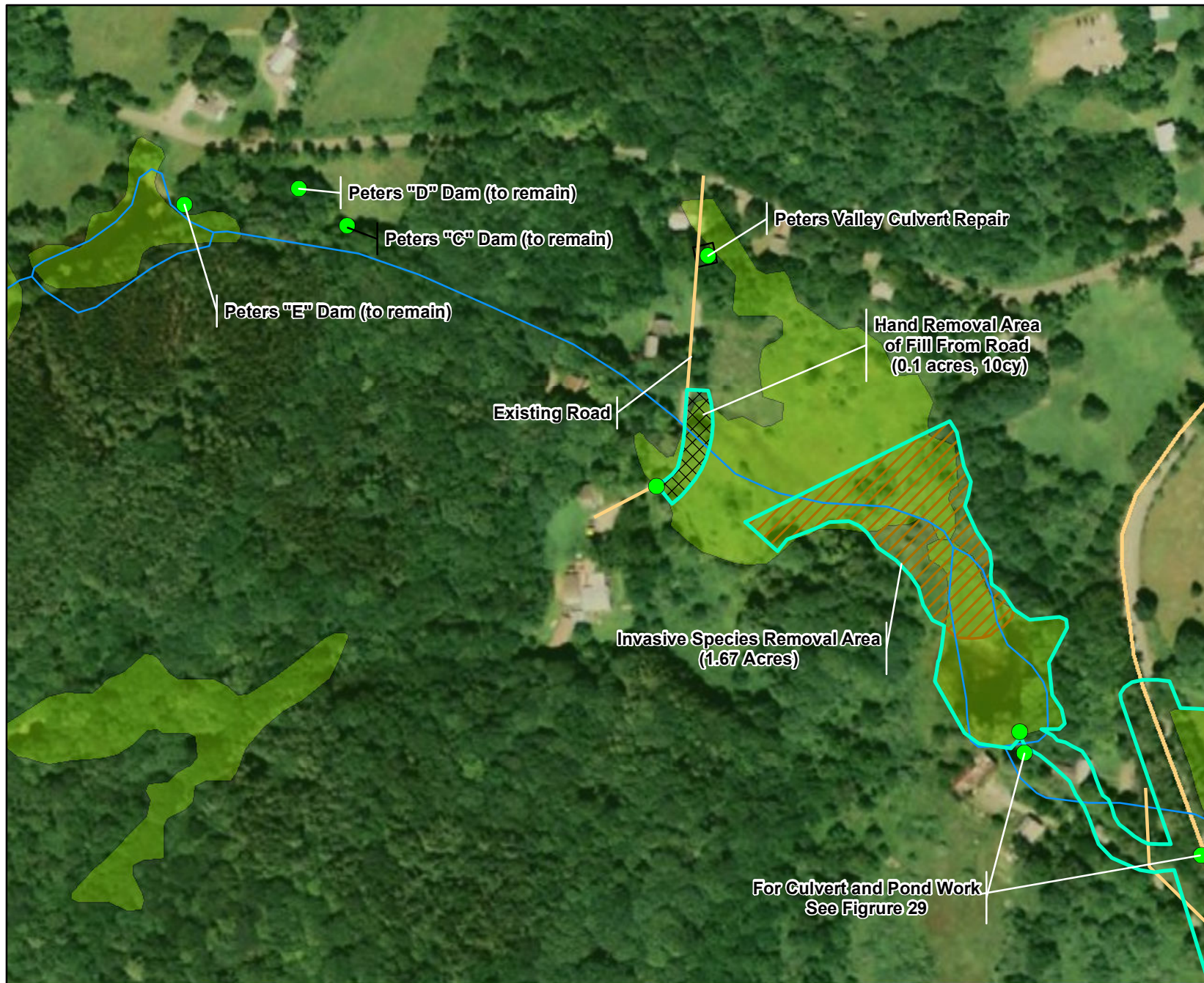
Figure 26
Miller Wetland Restoration Project
Proposed Mitigation Projects

Source:
ESRI ArcGISonline Map Service 2010,
NWI 1977, NPS 2012

Projection: NAD 83 UTM Zone 18N
Date: September 2012



0 160 320
Feet



Legend

- GPS Point Collected in May
- Existing Stream / Creek
- Existing Wetlands
- Existing Roads
- Proposed Hand Removed Area of Road Fill (Oilac)
- Proposed Invasive Species Control Area (1.67 Acres)
- Proposed Work Area Boundary



Statement of Findings
Susquehanna To Roseland
Transmission Line
Right-Of-Way And Special Use Permit
Environmental Impact Statement

Figure 27
Peters Culvert and Wetlands Restoration Project
Proposed Mitigation Projects

Source:
ESRI ArcGISonline Map Service 2010,
NWI 1977, NPS 2012
Projection: NAD 83 UTM Zone 18N
Date: September 2012



0 120 240
Feet

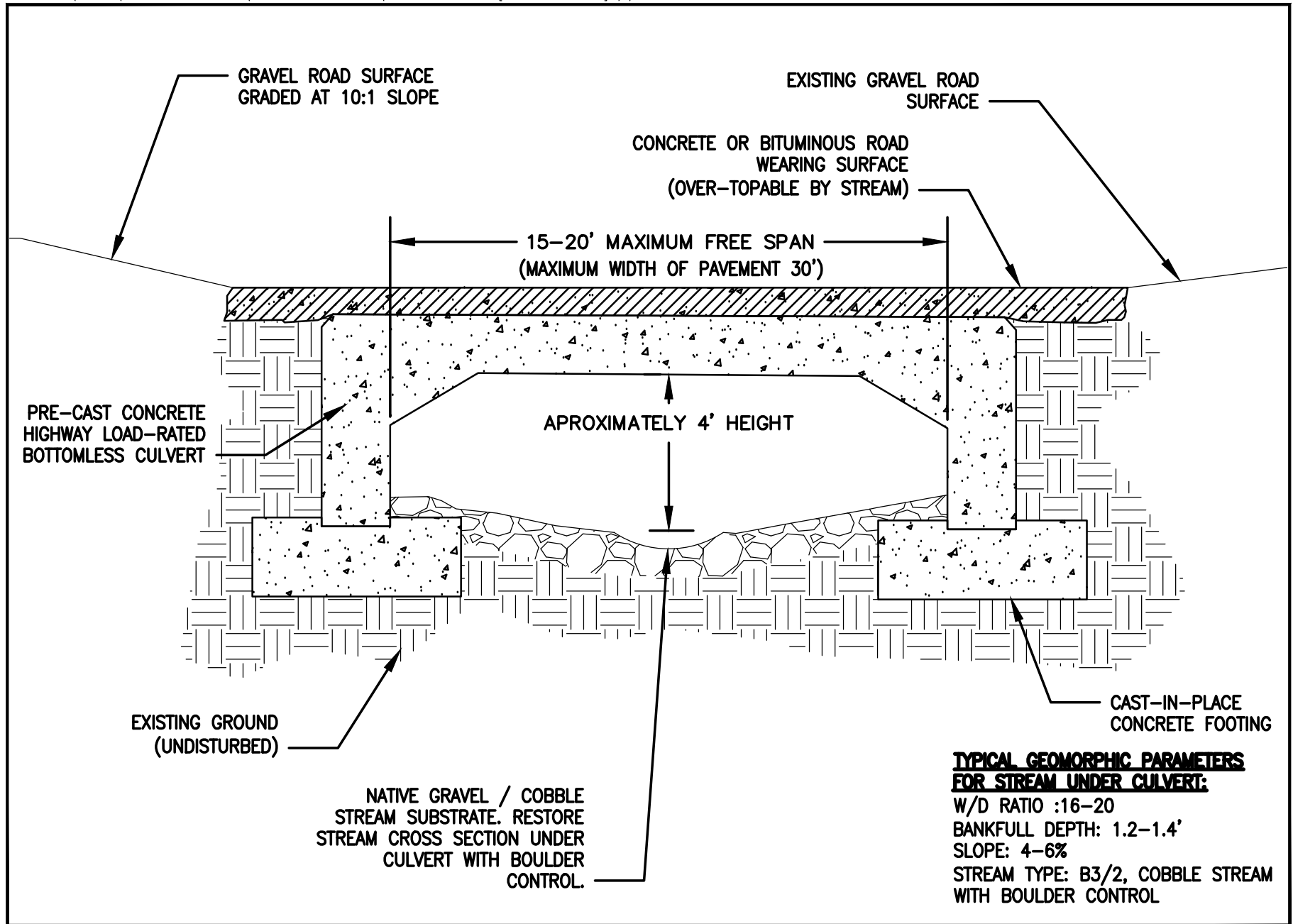
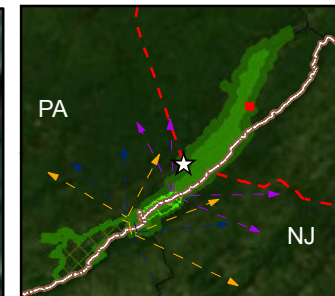


Figure 28. Peters Valley Culvert Replacement Typical Detail – Proposed Mitigation Project
(Section View)



Legend

- GPS Point Collected in May
- Existing Stream / Creek
- Existing Wetlands
- Proposed Open Water
- ▨ Proposed Wetland Restoration (Open Water Conversion) (0.93 Acres)
- ▨ Proposed Invasive Species Control Area
- Proposed Stream Restoration
- Proposed Cobble B3/2 Stream for Connectivity
- X X Herpetofauna Fencing
- Existing Roads
- Proposed Work Area Boundary

Note:

- Mitigation boundary extends beyond map view



Statement of Findings
Susquehanna To Roseland
Transmission Line
Right-Of-Way And Special Use Permit
Environmental Impact Statement

Figure 29
Peters Mill Pond Wetland Restoration
And RT 615 Connectivity Projects

Source: ESRI Streetmap 2006, Penn State 2010,
ESRI ArcGISonline Map Service 2010,
PennDOT 2011, USGS 2006,
NJ DEP 2008, NWI 1977

Projection: NAD 83 UTM Zone 18N
Date: July 2012



0 60 120
Feet

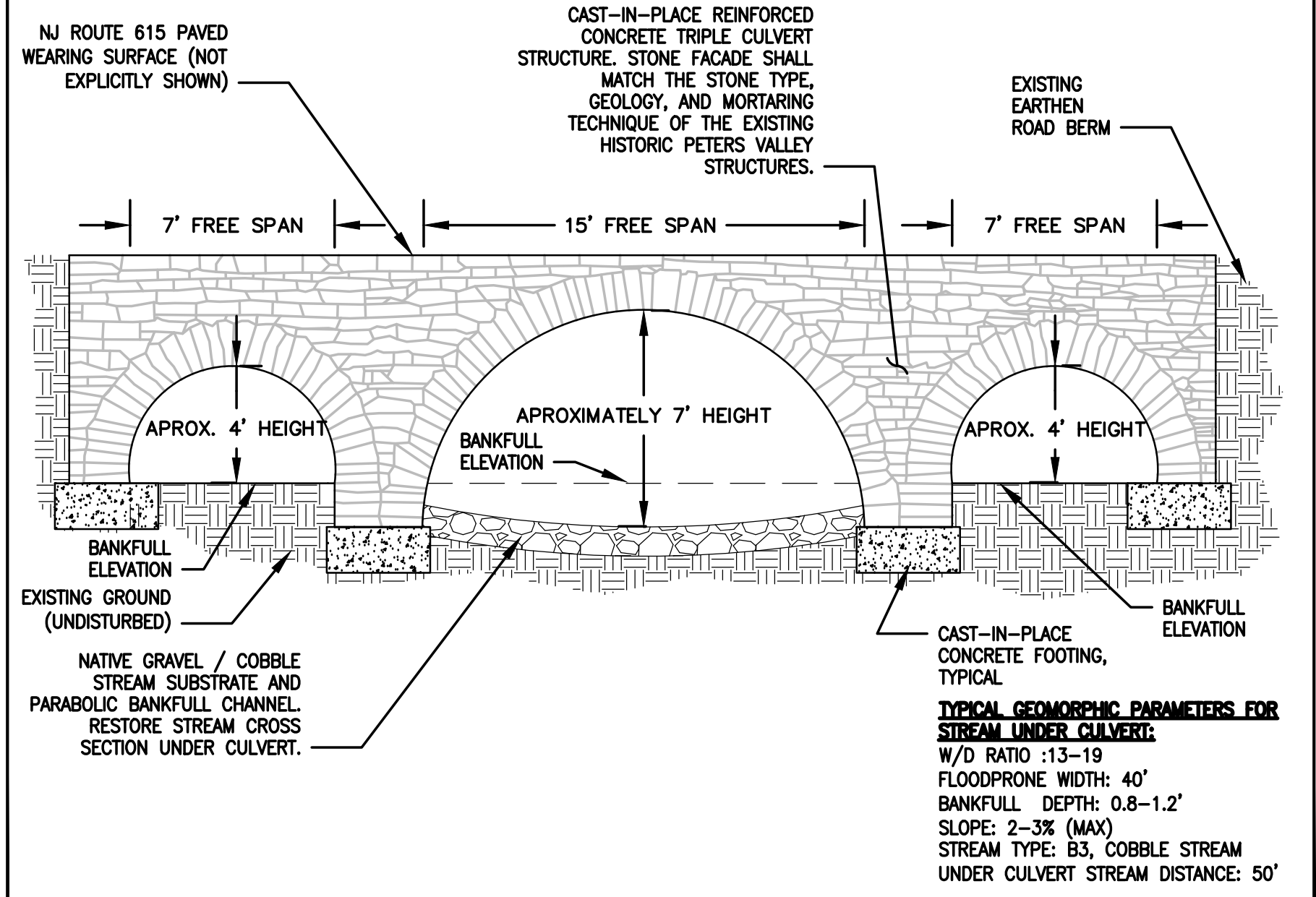
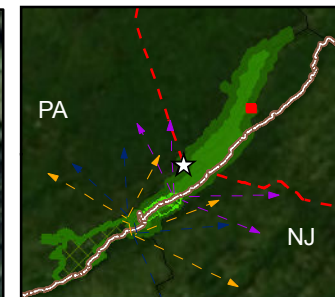
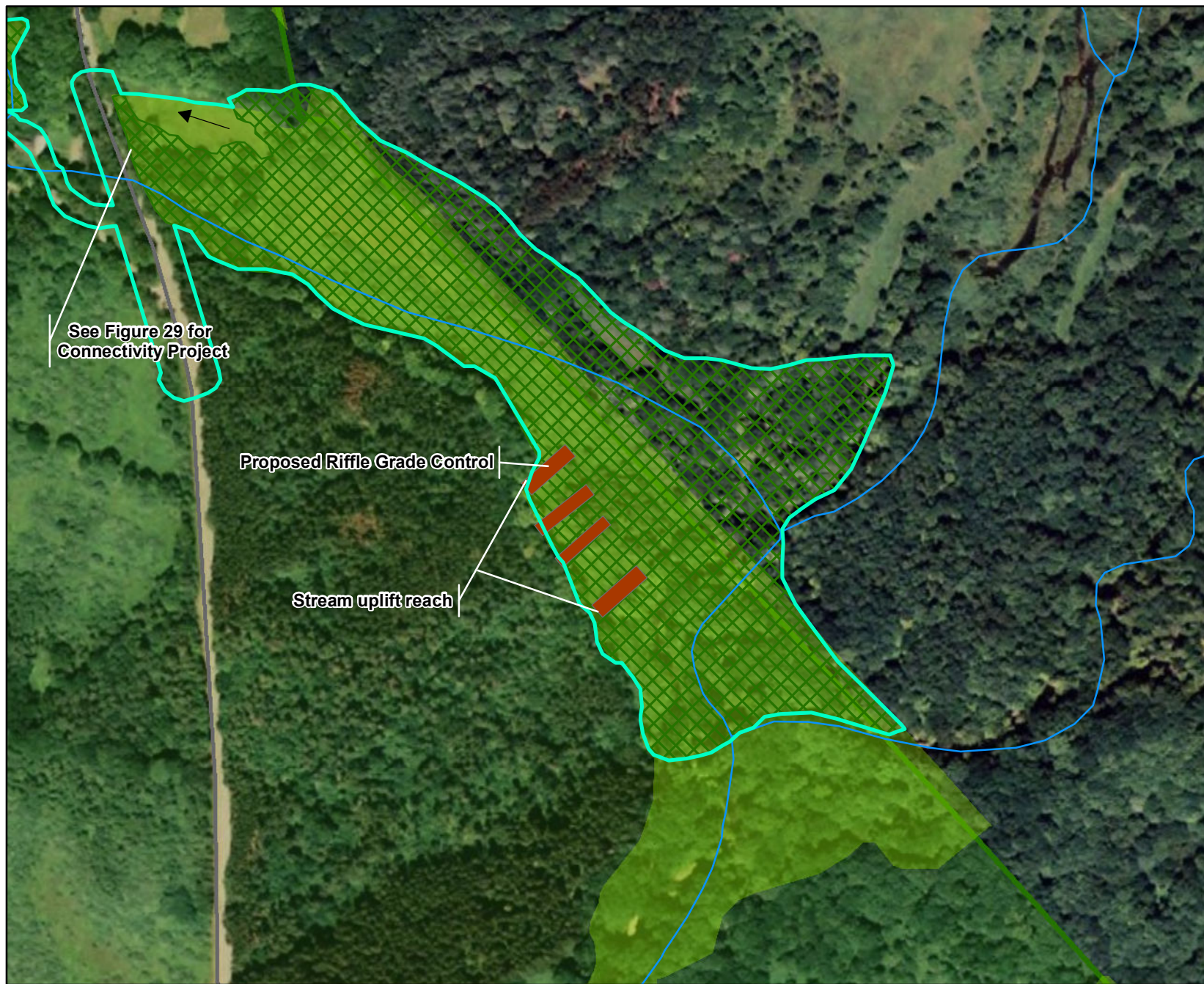


Figure 30. Peters Valley NJ Route 615 Herpetofauna Connectivity – Proposed Mitigation Project (Section View)



Legend

- Existing Stream / Creek
- Existing Wetlands
- Proposed Riffle Grade Control
- ▨ Proposed Wetland Restoration Area (Grading) (18.82 Acres)
- Proposed Work Area Boundary

Note:

- Mitigation boundary extends beyond map view



Statement of Findings
Susquehanna To Roseland
Transmission Line
Right-Of-Way And Special Use Permit
Environmental Impact Statement

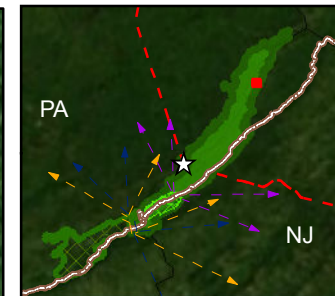
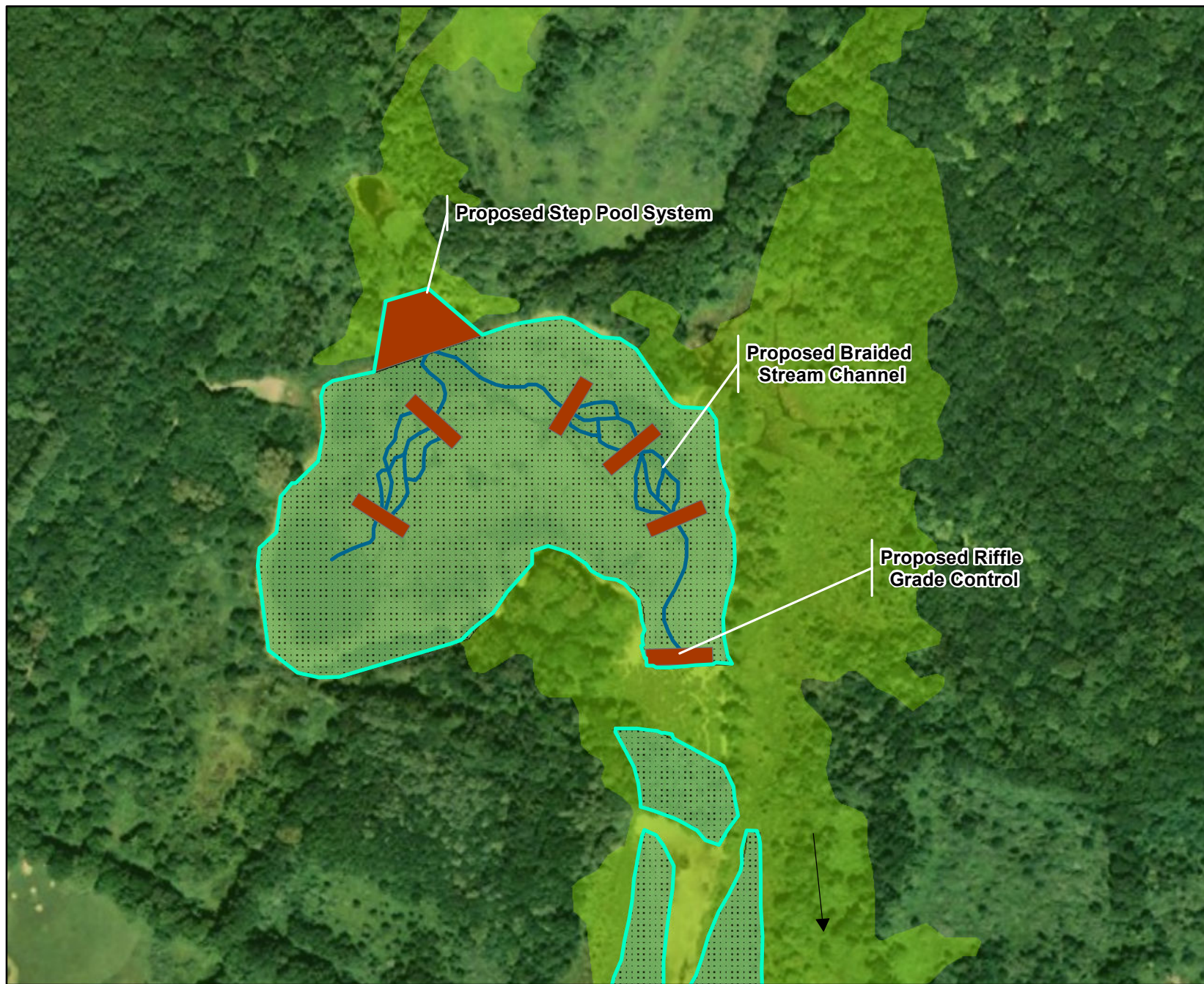
Figure 31
UNT to Little Flatbrook Wetland Restoration Project
Proposed Mitigation Projects

Source:
ESRI ArcGISonline Map Service 2010,
NWI 1977, NPS 2012

Projection: NAD 83 UTM Zone 18N
Date: September 2012



0 140 280
Feet



Legend

- Existing Stream / Creek
- ~ Sinuous Stream Channel
- Existing Wetlands
- Proposed Step Pool System / B3 Stream
- Proposed Emergent Wetland Restoration (Conversion) / Enhancement (11.05 Acres)
- Proposed Work Area Boundary

Note:

- Mitigation boundary extends beyond map view



Statement of Findings
Susquehanna To Roseland
Transmission Line
Right-Of-Way And Special Use Permit
Environmental Impact Statement

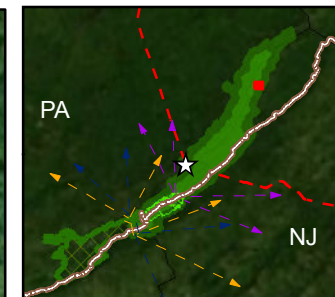
Figure 32
Camp Kittatinny Pond Wetland Restoration Project
Proposed Mitigation Projects

Source:
ESRI ArcGISonline Map Service 2010,
NWI 1977, NPS 2012

Projection: NAD 83 UTM Zone 18N
Date: September 2012



0 130 260
Feet



Legend

- Existing Stream / Creek
- ~ Proposed Stream Restoration
- Existing Wetlands
- Proposed Emergent Wetland Restoration (Conversion) / Enhancement (6.65 Acres)
- Proposed Work Area Boundary

Note:

- Mitigation boundary extends beyond map view



Statement of Findings
Susquehanna To Roseland
Transmission Line
Right-Of-Way And Special Use Permit
Environmental Impact Statement

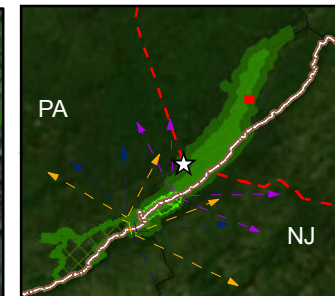
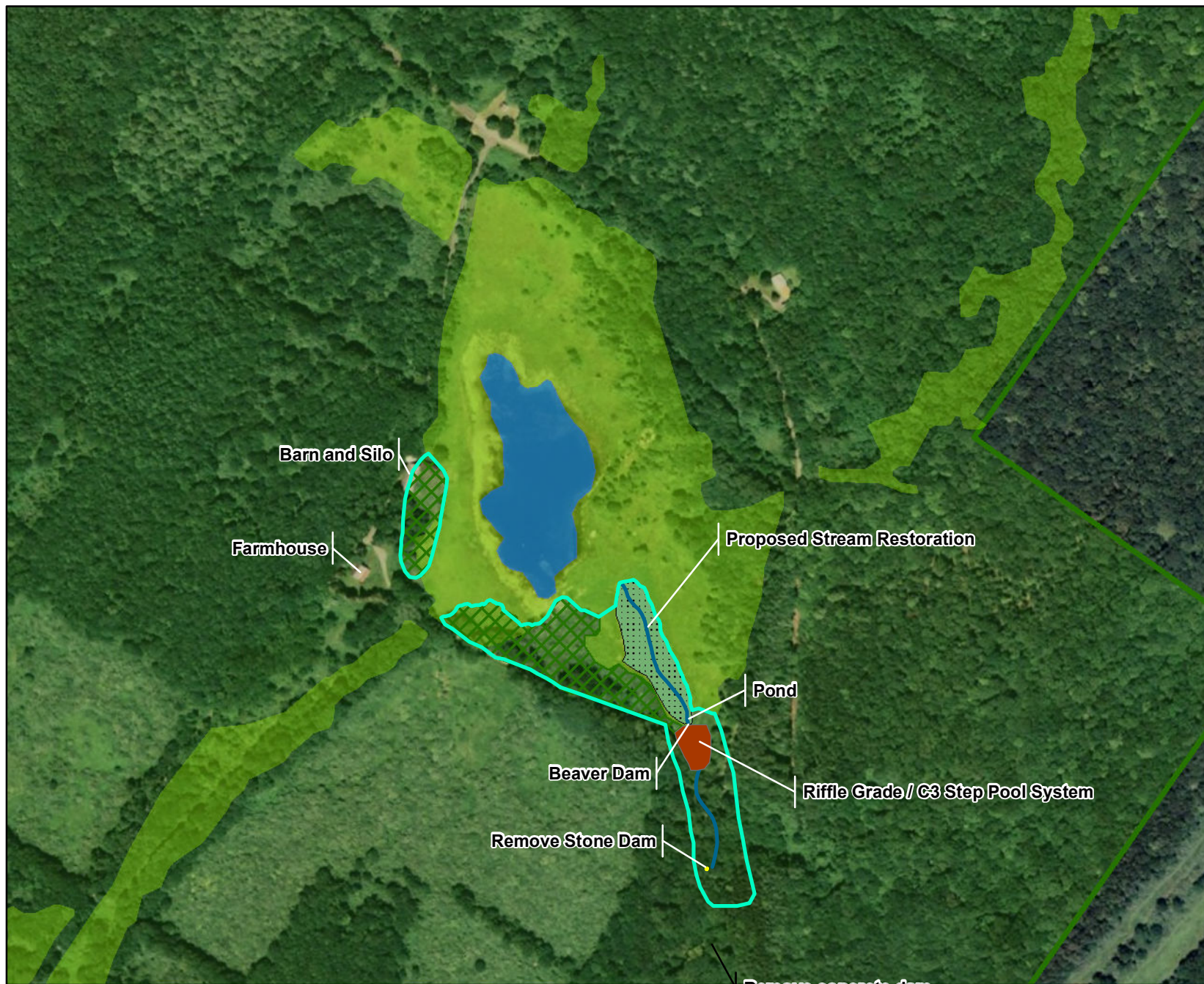
Figure 33
Camp Kittatinny Pond Wetland Restoration Project
Proposed Mitigation Projects

Source:
ESRI ArcGISonline Map Service 2010,
NWI 1977, NPS 2012

Projection: NAD 83 UTM Zone 18N
Date: September 2012



0 130 260
Feet



Legend

- GPS Line collected in June
- Existing Stream / Creek
- Proposed Stream Channel Restoration
- Existing Open Water
- Existing Wetlands
- Proposed Step Pool System / C3 Stream
- Proposed Emergent Wetland Restoration (Conversion) (1.08 Acres)
- Proposed Emergent Wetland Restoration (Grading) (2.95 Acres)
- Proposed Work Area Boundary

Figure 34
Birchenough Pond Wetland Restoration Project
Proposed Mitigation Projects



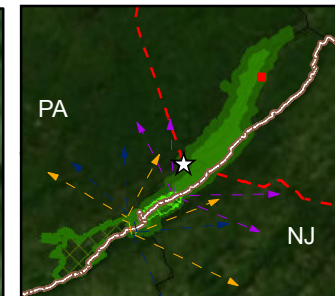
Statement of Findings
 Susquehanna To Roseland
 Transmission Line
 Right-Of-Way And Special Use Permit
 Environmental Impact Statement

Source:
 ESRI ArcGISonline Map Service 2010,
 NWI 1977, NPS 2012

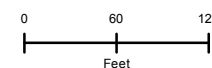
Projection: NAD 83 UTM Zone 18N
 Date: September 2012

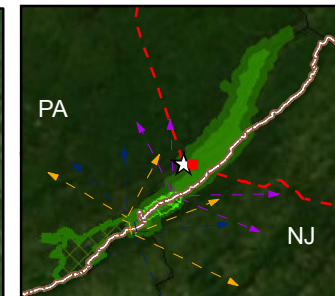
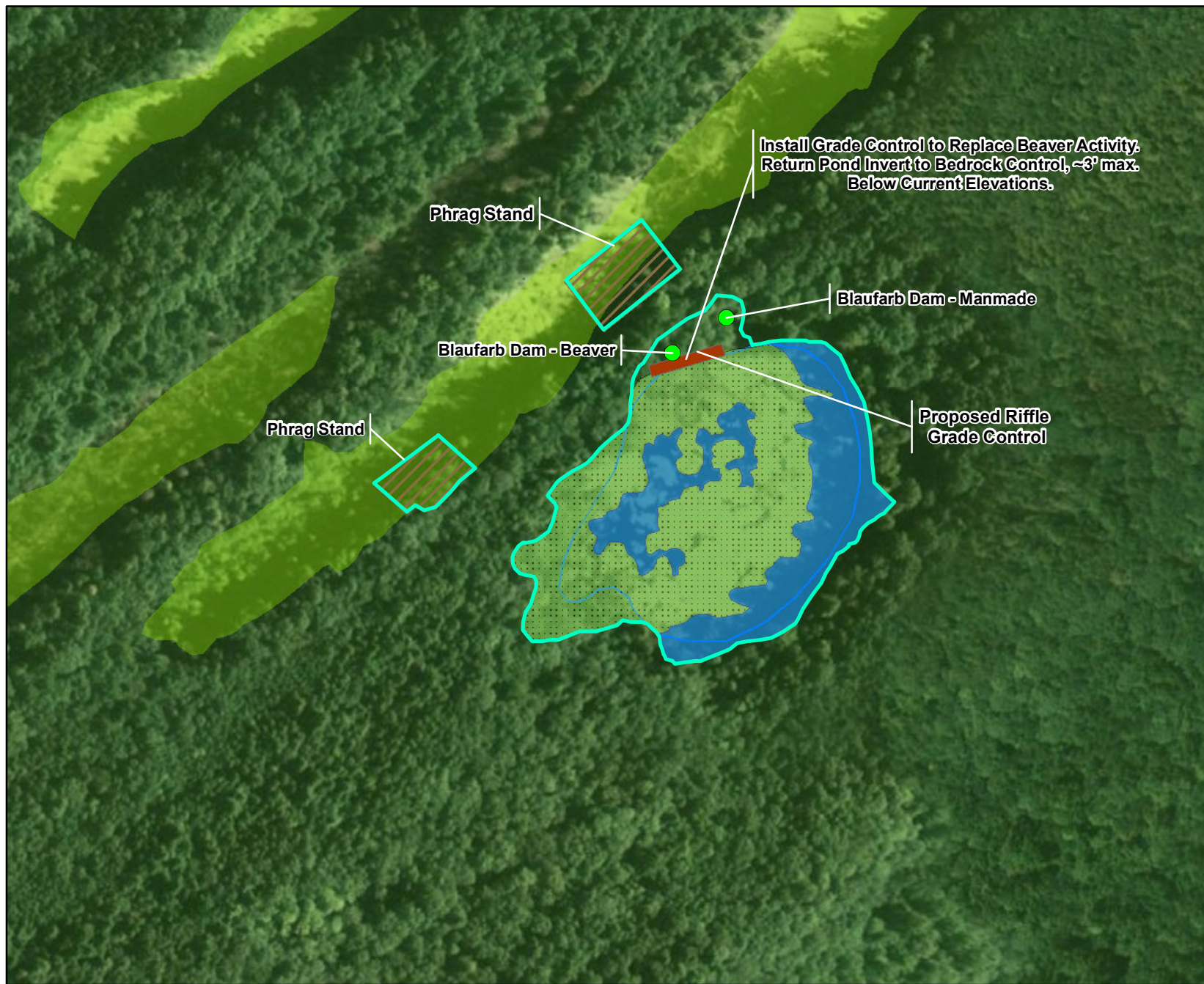


0 200 400
 Feet



- Legend**
- Existing Stream / Creek
 - Proposed Stream Restoration
 - Existing Wetlands
 - Proposed Step Pool System / B3 Stream (157 ft)
 - Proposed Emergent Wetland Restoration (Conversion) (0.99 Acres)
 - Proposed Emergent Wetland Restoration (Grading) (0.37 Acres)
 - Proposed Work Area Boundary





Legend

- GPS Point Collected in May
- ~ Proposed Stream Restoration
- Existing Stream / Creek
- Existing Open Water
- Existing Wetlands
- ▨ Phragmites / Invasive Species Control (0.96 Acres)
- ▨ Proposed Riffle Grade Control/Cascade
- ▨ Proposed Emergent Wetland Restoration (Conversion) (4.77 Acres)
- Proposed Work Area Boundary



Statement of Findings
Susquehanna To Roseland
Transmission Line
Right-Of-Way And Special Use Permit
Environmental Impact Statement

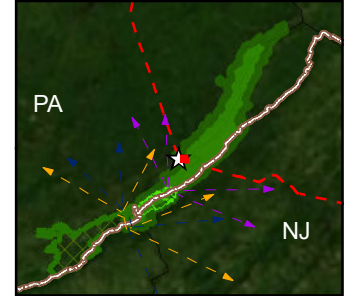
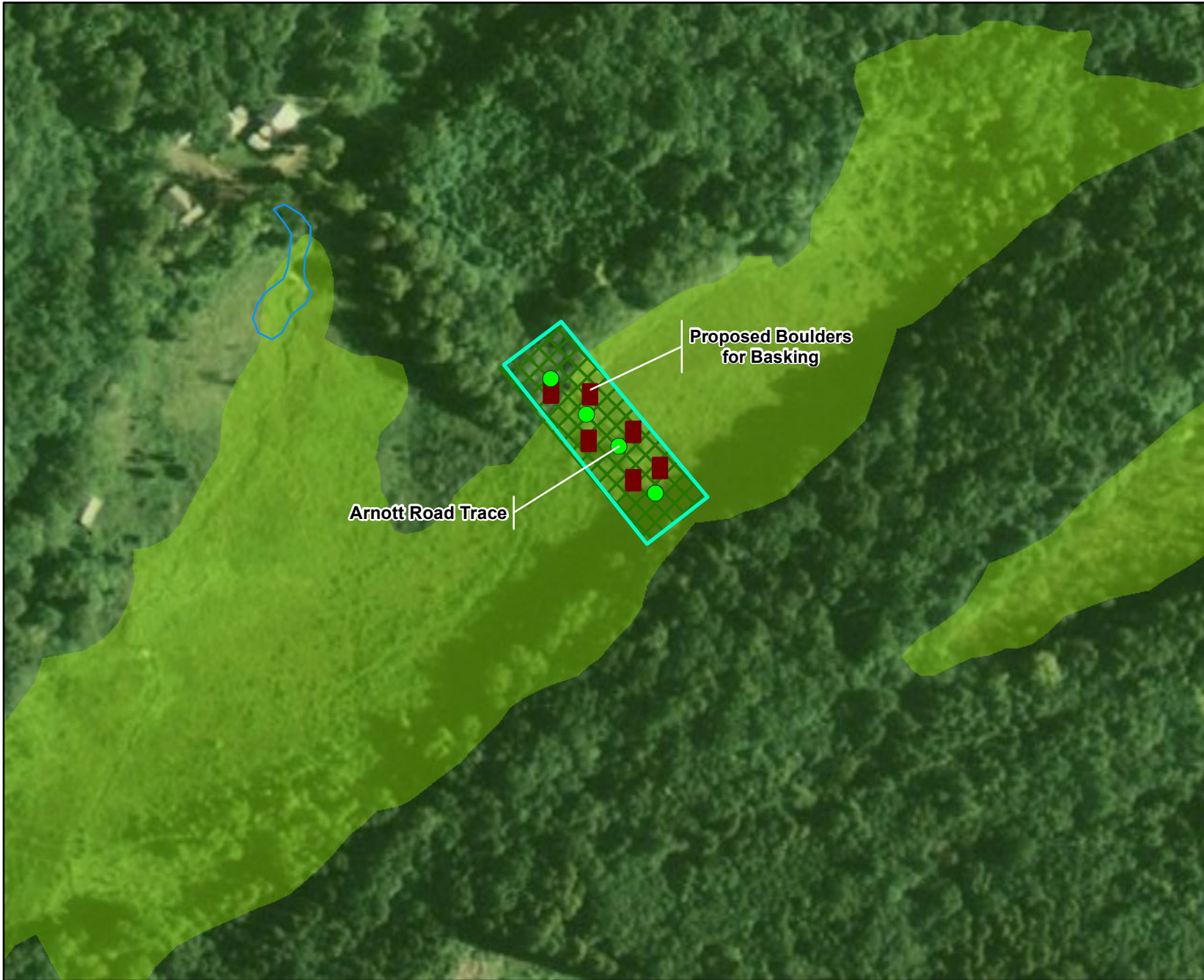
Figure 36
Blaugarb Pond Wetland Restoration Project
Proposed Mitigation Projects

Source:
ESRI ArcGISonline Map Service 2010,
NWI 1977, NPS 2012

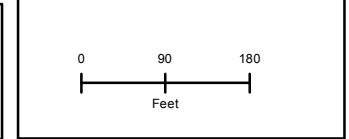
Projection: NAD 83 UTM Zone 18N
Date: September 2012

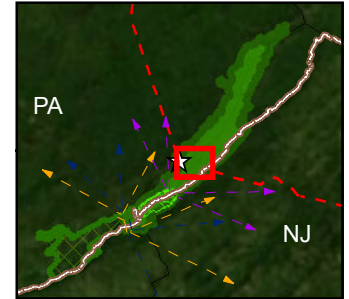
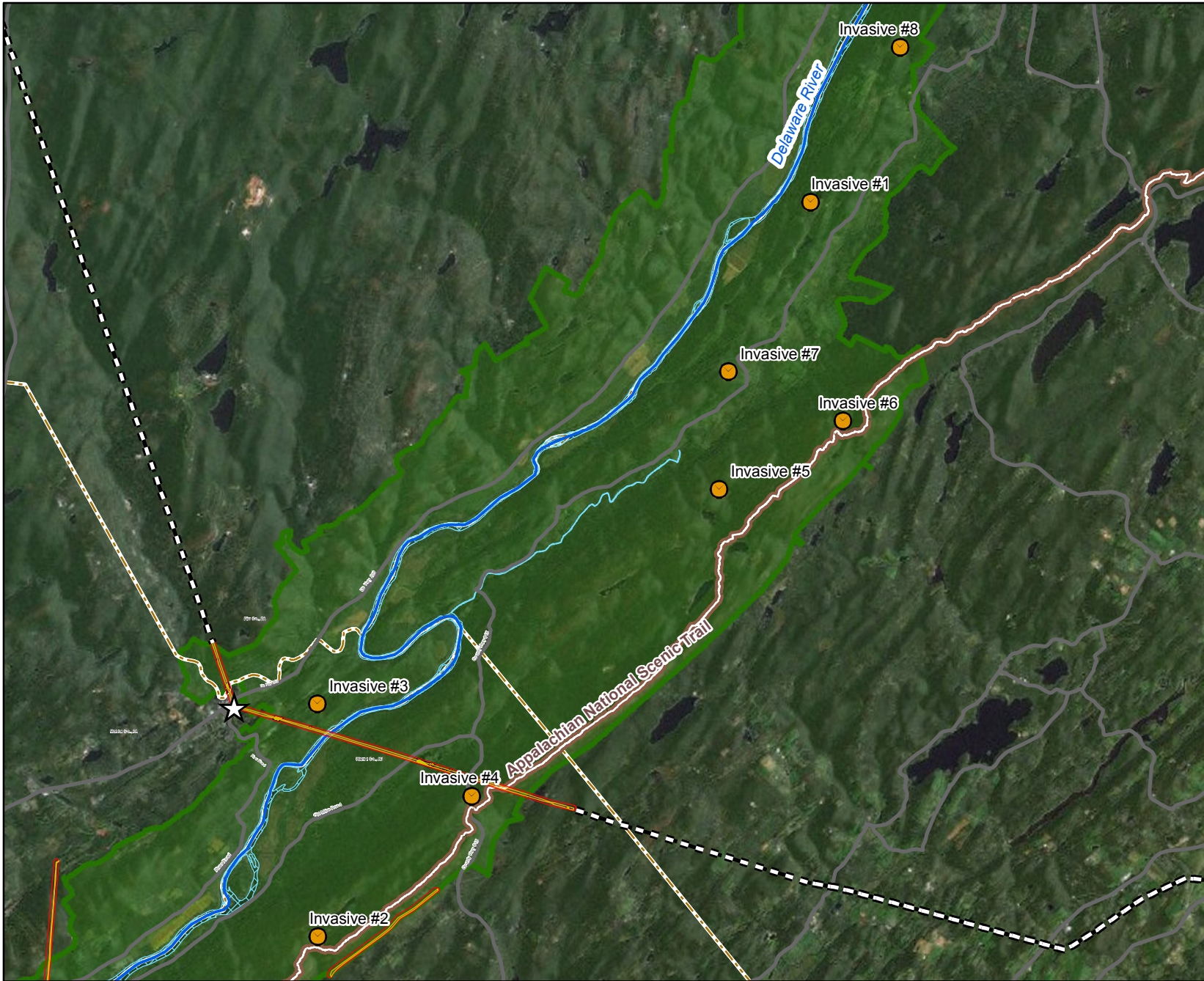


0 130 260
Feet



- Legend**
- Existing Stream / Creek
 - Wetlands
 - Proposed Wetland Restoration (Grading - 0.25 acres)
 - Proposed Boulders
 - Proposed Work Area Boundary





Legend

- Location of Priority Invasive Species Removal
- Substation
- Outside Study Area
- Existing ROW in Study Area
- 350 ft Corridor
- Delaware River
- Road
- Delaware Water Gap National Recreation Area
- Wetlands within 350ft buffer
- Wetlands
- County Line



Statement of Findings
Susquehanna To Roseland
Transmission Line
Right-Of-Way And Special Use Permit
Environmental Impact Statement

Figure 38
Invasive Plant Species Removal
Proposed Mitigation Project

Source:
ESRI ArcGISonline Map Service 2010,
NWI 1977, NPS 2012

Projection: NAD 83 UTM Zone 18N
Date: September 2012



0 2,500 5,000
Feet