

Chapter 4: Floor Plans and Photographic Documentation

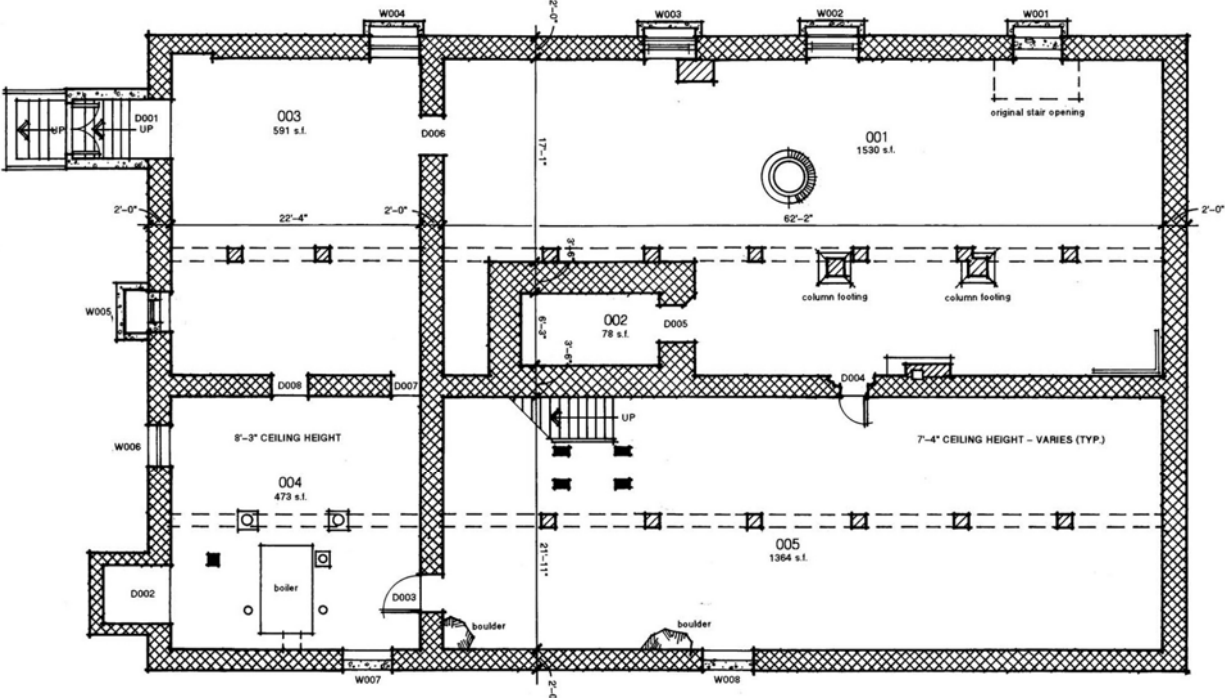


Figure 14: Existing Conditions, Basement of Union Building

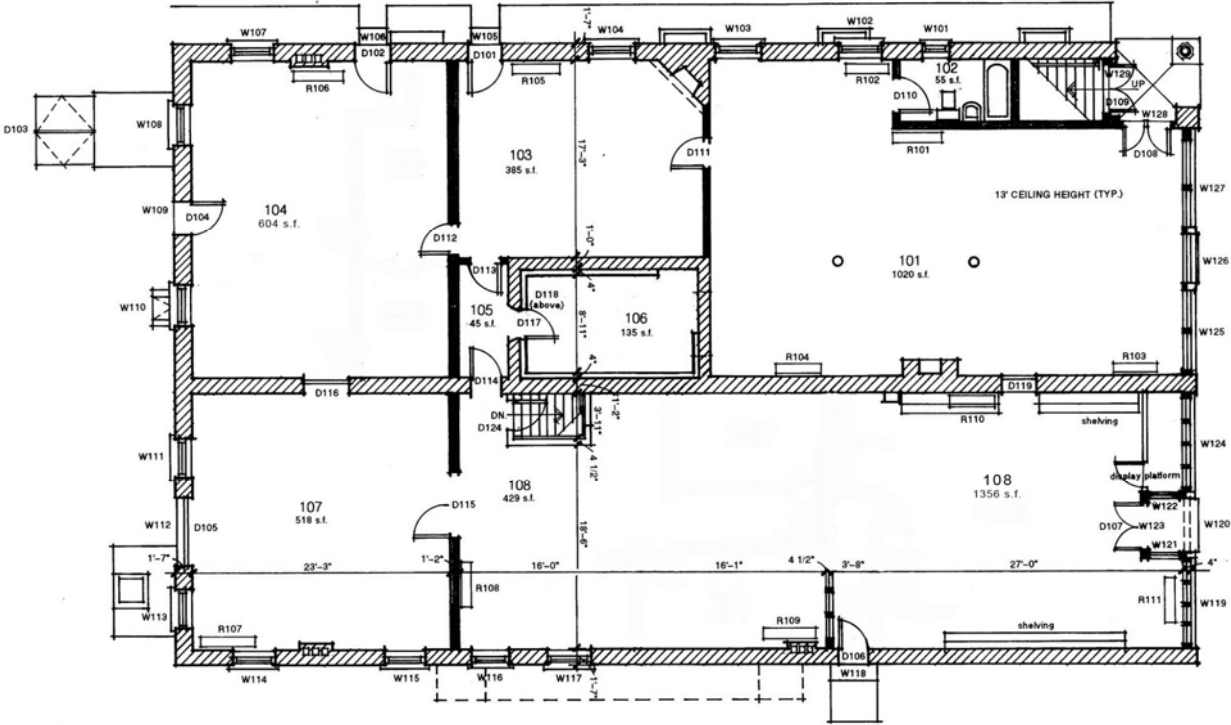


Figure 15: Existing Conditions, First Floor of Union Building

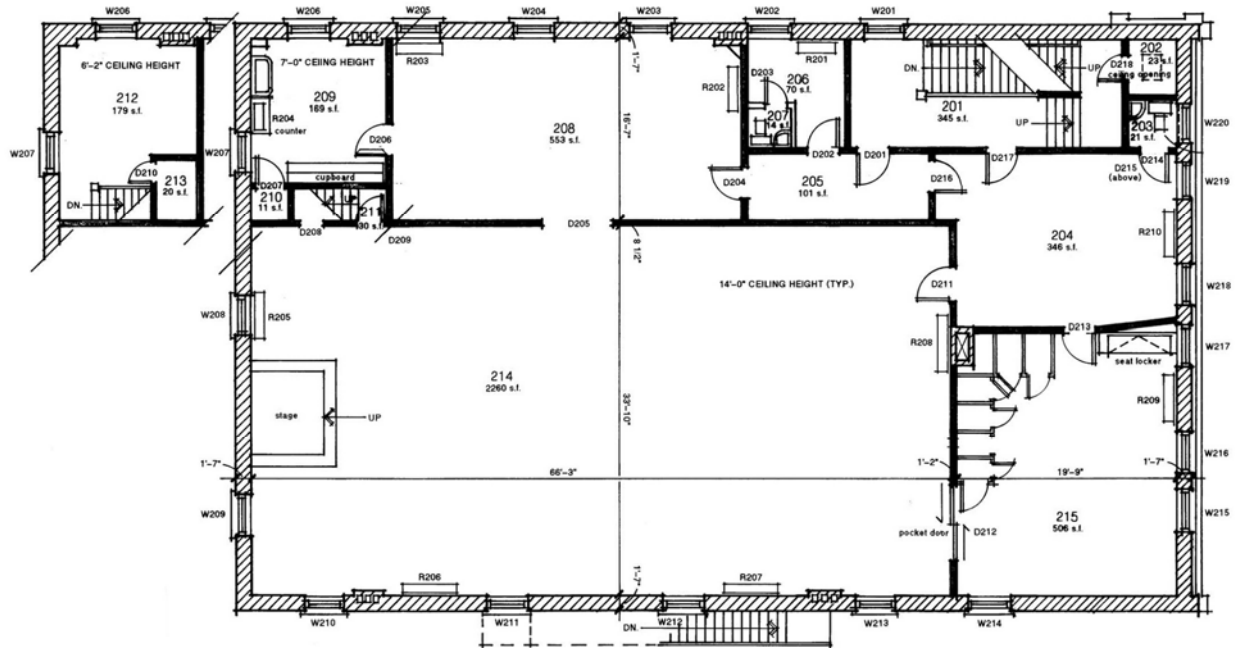


Figure 16: Existing Conditions, Second Floor of Union Building

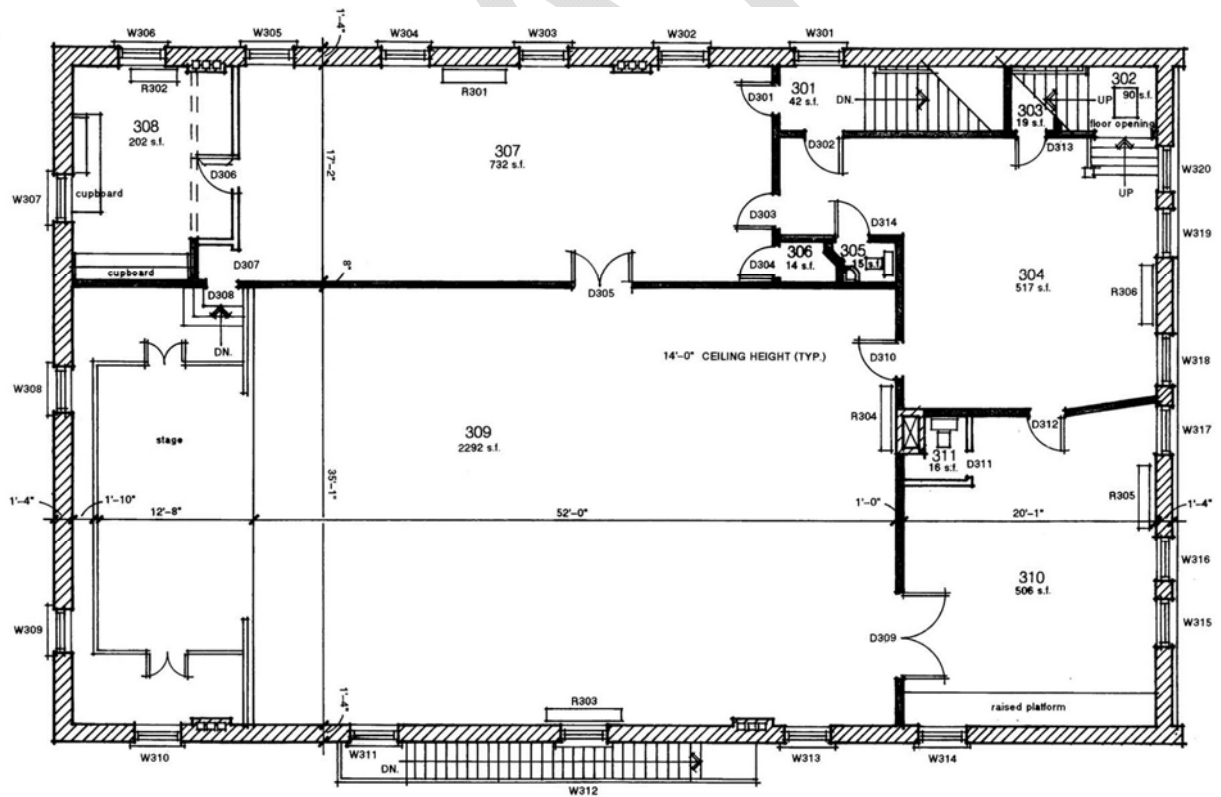


Figure 17: Existing Conditions, Third Floor of Union Building



Figure 18: Union Building after Exterior Rehabilitation (NPS Photo, Dan Johnson)



**Figure 19: South Side, Accessible Entrance
(NPS Photo, Karl Benda)**



**Figure 20: East Side, Service Entrance
(NPS Photo, Karl Benda)**



Figure 21: First Floor, North Side, West End (NPS Photo)

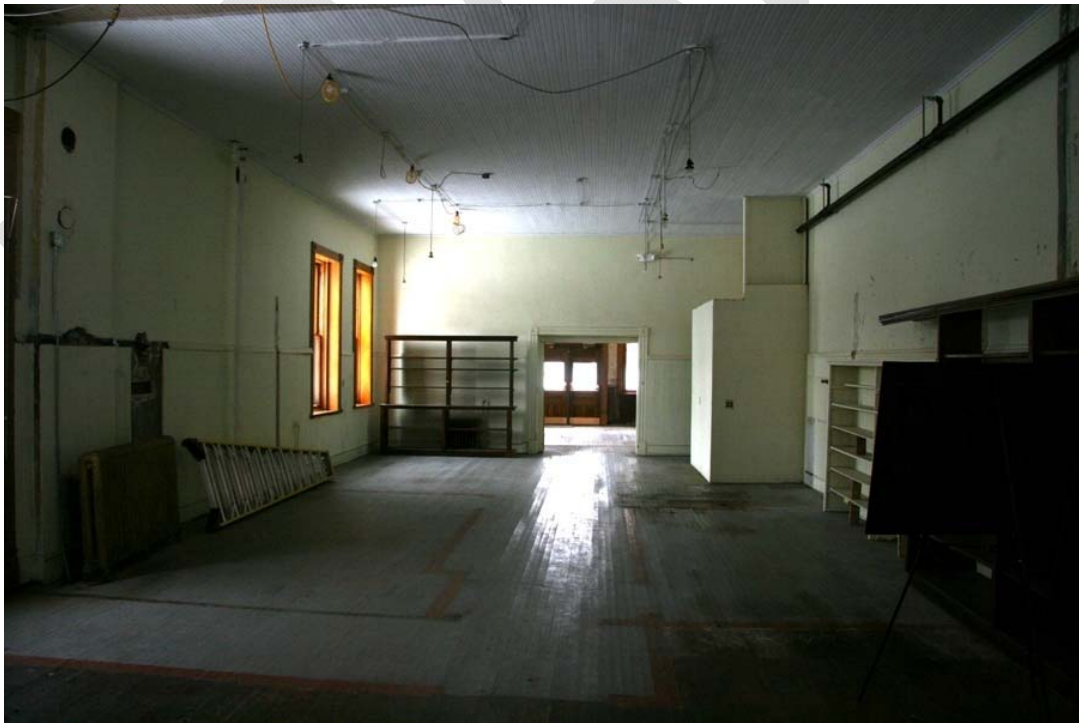


Figure 22: First Floor, North Side, East End (NPS Photo)



Figure 23: Second Floor Lodge Room, West End (NPS Photo)



Figure 24: Second Floor, Robing Room (NPS Photo)



Figure 25: Third Floor Lodge Room and Stage after Exterior Rehabilitation Project (NPS Photo)



Figure 26: Third Floor Restroom (NPS Photo)



Figure 27: Street Level, Keweenaw Printing Company Store, c.1915
(Keweenaw NHP Archives, Myrno E. Petermann Papers, No. 563; Catalog No. KEWE 3002)



Figure 28: Free and Accepted Masons 50th Anniversary, Union Building, Third Floor Lodge Room
(Keweenaw NHP Archives, Keweenaw Historic Photograph Collection; Catalog No. KEWE 2707)

(This page left intentionally blank.)

Chapter 5: Coordination and Consultation

Internal Scoping

Internal scoping was conducted by an interdisciplinary team (IDT) of professionals from Keweenaw National Historical Park, Harpers Ferry Center, and the NPS Midwest Regional Office. Interdisciplinary team members met on December 5, 2008 at Keweenaw NHP headquarters and by conference call to discuss the Environmental Screening Form. The park's core IDT met at least monthly between December 2008 and July 2009 to discuss four primary topics: the purpose of the project; various proposed alternatives; potential environmental impacts; and possible mitigation measures to be taken.


External Scoping

External scoping was conducted to inform and solicit comments from various stakeholders and the public about the proposal to rehabilitate the Union Building and locate interpretive exhibits and orientation facilities in it. Marcella Wells, PhD, conducted Public Involvement Focus Groups October 24-26, 2008 to explore the intent of the Union Building project. (See *Front-End Evaluation Report for the Union Building Interpretive Facility, Keweenaw National Historical Park*.) Forty-seven people participated in six focus groups. Observations and comments included residents' sense of place and first-time visitor perceptions, richness and complexity of the stories, misperceptions of the Union Building's name, the history of the Italian Hall, paternalism, modern relevancy of the proposed topics, and potential alternatives to the same.

External scoping continued at a public meeting on October 28, 2008. The results of the Public Involvement Focus Groups and the Value Analysis sessions were presented. Stakeholders were provided with an opportunity to discuss with and provide comments directly to Krister Olmon and the primary exhibit design team.

A press release was distributed to media outlets across the western Upper Peninsula, resulting in numerous public service announcements on radio stations, a news spot on WNMU Public Radio, and an article in the *Daily Mining Gazette*. Flyers were posted in public gathering spaces in the local area.

National Park Service
U.S. Department of the Interior
Keweenaw National Historical Park



Public Meeting

Please Join Us to Help Plan the Future of Keweenaw National Historical Park.

The National Park Service announces a public meeting and invites your input at this preliminary stage before choosing a best alternative that will be developed into exhibits for the park's new Union Building Interpretive Facility.

The Office of Krister Olmon, Inc. will share three proposals for presenting the social history of Calumet through exhibits. The exhibit planners and designers will show how they intend to distill the body of research, the interpretive stories, and major interpretive themes into messages easily understood in exhibits. In this early stage of development, attendees can expect to see a bubble diagram, a tentative floor plan, and a few illustrations.

Scheduled for completion in 2011/2012, exhibits at the Union Building will reveal stories of what life was like in the copper mining town of Calumet from the late 1800s through the closure of the Calumet & Hecla Mining Company.


**Tuesday, October 28, 2008
6:30 - 8:00 P.M.**

Location:
Keweenaw NHP Headquarters
25970 Red Jacket Road
(Just off U.S. Highway 41)
Calumet, Michigan 49913


For more information call
Keweenaw National Historical Park
(906) 337-3168
or visit www.nps.gov/kewe

The National Park Service cares for the special places saved by the American people so that all may experience our heritage.

EXPERIENCE YOUR AMERICA™



National Park Service
U.S. Department of the Interior
Keweenaw National Historical Park



Public Meeting

Please join us to help plan the future Union Building exhibits at Keweenaw National Historical Park.

The National Park Service is hosting a public meeting to invite your input on the design of interpretive exhibits for the Union Building Interpretive Facility.

The Office of Krister Olmon, Inc. will share the current status of exhibit design. At this point in the exhibit planning process, people will be able to look at detailed floor plans, view a three-dimensional model of the exhibit area, see some elevation drawings of exhibit features and read descriptions of exhibits that will include proposed objects for display and the topics the exhibit text will cover. Attendees to the meeting will have the opportunity to provide feedback to park staff and the exhibit designer.

Exhibits at the Union Building, the park's first NPS operated facility, will reveal stories of what life was like in the copper mining town of Calumet from the late 1800s through the closure of the Calumet & Hecla Mining Company. The facility will also feature an orientation area to the park and our partners for area visitors.


**Wednesday, July 8, 2009
7:00 - 8:30 P.M.**

Location:
Keweenaw NHP Headquarters
25970 Red Jacket Road (Just off U.S. 41)
Calumet, Michigan 49913

For more information call
Keweenaw National Historical Park
(906) 337-3168
or visit www.nps.gov/kewe

The National Park Service cares for the special places saved by the American people so that all may experience our heritage.

EXPERIENCE YOUR AMERICA™



A third public meeting was held on July 8, 2009 to discuss the Design Development I phase of exhibit planning. The meeting was attended by eight residents of Calumet, Laurium, and Hancock in addition to NPS staff and the Office of Krister Olmon, Inc. (Report to follow.) Attendees had the opportunity to view and discuss a three-dimensional model of the proposed exhibit and accompanying documentation.

Consultation and Value Analysis

In addition to internal and external scoping, the project team consulted with NPS subject-matter experts at the Midwest Regional Office and Harpers Ferry Center through the Value Analysis process. As mentioned in Chapter 1, there were two VA workshops: one for the rehabilitation project, and one for the exhibit design project.¹³ The team engaged the Michigan State Historic Preservation Office (MI-SHPO) prior to the exhibit design Value Analysis and continued discussion with MI-SHPO throughout the planning and compliance process.

The Architectural and Engineering (A&E) Value Analysis was conducted July 21-24, 2008. The workshop was facilitated by Stephen Garrett of Kirk Associates, and included the following participants:

National Park Service – Keweenaw National Historical Park

Karl Benda	Construction Representative/Inspector
James Corless	Superintendent
Steve DeLong, ASLA	Landscape Architect
Kathleen Harter	Chief of Interpretation and Education
Brian Hoduski	Museum Curator
Dan Johnson	Interpretive Specialist
Jeremiah Mason	Archivist
Charles Masten	Facility Manager
John Rosemurgy	Historical Architect

National Park Service – Midwest Regional Office

Al O'Bright	Historical Architect
Roberta Wendel	Interpretive Media Specialist
Mark Wolterman	Historical Architect/Project Manager

National Park Service – Harpers Ferry Center

Krista Kovach-Hindsley	Exhibit Planner
Antje Newman	Conservator
Michael Paskowsky	Exhibit Project Manager

SmithGroup, Inc.

Johanna Cameron	Architect
Greg Jones	Architect
Andrea Reynolds	Architect/Project Management

¹³ Refer to *Rehabilitate Union Building* and *Value Analysis Report*.

The Exhibit Design Value Analysis was conducted October 28-30, 2008. The workshop was facilitated by Krista Kovach-Hindsley, HFC Exhibit Planner. Workshop participants included:

National Park Service – Keweenaw National Historical Park

Tom Baker	Management Assistant
Jim Corless	Superintendent
Steve DeLong, ASLA	Landscape Architect
John Griebel	Museum Technician
Kathleen Harter	Chief of Interpretation and Education
Brian Hoduski	Museum Curator
Jeremiah Mason	Archivist
David Morris	Intern (Archives)
Dan Johnson	Interpretive Specialist
John Rosemurgy	Historical Architect
Jo Urion	Historian

Keweenaw NHP Advisory Commission

Kim Hoagland	Chair
--------------	-------

National Park Service – Midwest Regional Office

Tom Richter	Regional Chief of Interpretation
Mark Wolterman	Architect

National Park Service – Harpers Ferry Center

Sarah Heald	Staff Curator (Historic Furnishings)
Krista Kovach-Hindsley	Exhibit Planner/Facilitator
Carol Maass	HFC Project Manager

Office of Krister Olmon, Inc.

Krister Olmon	Exhibit Designer/Project Manager
Heather Linquist	Content Developer/Writer/Editor

Keweenaw Heritage Center at St. Anne's

Phyllis Locatelli	Board Member
Frank Fiala	Board Member

Main Street Calumet

Tom Tikkanen	Executive Director
--------------	--------------------

Michigan State Historic Preservation Office

Brian Lijewski	Architectural Coordinator
----------------	---------------------------

Isle Royale and Keweenaw Parks Association

Jill Burkland	Executive Director
---------------	--------------------

Environmental Assessment Review

The Draft Environmental Assessment was submitted to the Midwest Regional Office for review and comment by the Cultural Resources Management Team (CRMT) and pertinent Associate Regional Directors. Park staff revised the initial document and returned it to the MWRO for subsequent review and the Regional Director's approval to begin the public review process. This process includes review by the Keweenaw NHP Advisory Commission, the Tribal Historic Preservation Officer of the Keweenaw Bay Indian Community, and the Michigan State Historic Preservation Officer.

To inform the public of the availability of the EA, the NPS will publish and distribute press releases to various agencies and media outlets on the park's mailing list. Copies of the EA will be provided to interested individuals upon request. Copies of the document will be available for review at the CLK Public Library in Calumet, MTU Van Pelt Library and Portage Lake District Library in Houghton, and the Hancock School Public Library in Hancock, Michigan. Other copies will be available at the Calumet Village Office, the offices of the Charter Township of Calumet, Osceola Township, Franklin Township, and Quincy Township. The EA will be available for download at the NPS website: www.nps.gov/kewe.

The EA is subject to a 30-day public review and comment period. During this time, the public is encouraged to submit their written comments to the NPS address provided below:

Union Building EA Comments
ATTN: Tom Baker, Management Assistant
Keweenaw National Historical Park
25970 Red Jacket Road
Calumet, MI 49913

Another option for public comment is to access the NPS website for Planning, Environment and Public Comment (PEPC) at: parkplanning.nps.gov, and choose Keweenaw National Historical Park. Following the close of the comment period, all public comments will be reviewed and analyzed prior to the release of a decision document. In response to internal NPS and public review, the NPS will make appropriate changes to the EA as needed.

Appendix A: Works Cited

- Atwood, Stephanie K. *Historic Use of the Interior Space of the Union Building*. US Department of the Interior, National Park Service, Keweenaw NHP, Unpublished, 2008.
- Calumet Township Strategic Plan Committee. *Concept Development Plan, Keweenaw National Historical Park*. Plan, Calumet, MI: Unpublished, 1991 (revised 1995).
- Kirk Associates. *Rehabilitate Union Building - Phase 2 Interior: Value Analysis Final Report*. Unpublished, 2008.
- Martin, Dr. Patrick. *Archaeological Testing of the Union Building Property, Calumet, Michigan*. Unpublished, 2003.
- Moore, William D. *Keweenaw National Historical Park, Historians' Roundtable Summative Memo*. Memorandum, Unpublished, 2009.
- . *personal communication*. Calumet, Michigan, (January 13, 2009).
- US Department of the Interior, National Park Service. *Keweenaw National Historical Park, Michigan, Final General Management Plan and Environmental Impact Statement*. Government Document, Washington, DC: Unpublished, 1998.
- US Department of the Interior, National Park Service, Harpers Ferry Center. *Value Analysis Report: Keweenaw National Historical Park Exhibits for the Union Building*. Government Document, Unpublished, 2008.
- US Department of the Interior, National Park Service, Keweenaw National Historical Park. *Long Range Interpretive Plan (Draft)*. Government Document, Unpublished, 2009.
- US Department of the Interior, National Park Service, Keweenaw National Historical Park. *Park Facility Plan*. Government Document, Unpublished, 2009.
- US Department of the Interior, National Park Service, Keweenaw National Historical Park. *Union Building Historic Structure Report: Part 1, Developmental History (Draft)*. Government Document, Unpublished, 2009.
- Wells, Marcella. *Front-End Evaluation Report for the Union Building Interpretive Facility, Keweenaw National Historical Park*. Unpublished, 2008.

Appendix B: List of Acronyms/Definitions

C&H.....	Calumet and Hecla Mining Company
CBA	Choosing By Advantages
CEQ	Council on Environmental Quality
CFR.....	Code of Federal Regulations
CIP	Comprehensive Interpretive Plan
Copper Country	area encompassing the Portage Lake Volcanics geological formation
DO-12	Director's Order No. 12
DOI	Department of the Interior
EA	Environmental Assessment
EIS	Environmental Impact Statement
GMP.....	General Management Plan
HDC	Historic District Commission
HFC.....	Harpers Ferry Center
HSR.....	Historic Structure Report
IDT.....	Interdisciplinary Team
IRKPA	Isle Royale and Keweenaw Parks Association
KHS	Keweenaw Heritage Sites
LRIP.....	Long Range Interpretive Plan
MWR	Midwest Region
MWRO	Midwest Regional Office
NEPA.....	National Environmental Policy Act of 1969
NHL	National Historic Landmark
NHP	National Historical Park
NHPA	National Historic Preservation Act of 1966
NPS	National Park Service
NTS.....	Not to scale
Park	Keweenaw National Historical Park
P.L.....	Public Law
PFP.....	Park Facility Plan
RSS	Resource Stewardship Strategy
SHPO	State Historic Preservation Office
U.P.	Upper Peninsula of Michigan
Unit	generic term for congressionally authorized National Park Service area
USDA	United States Department of Agriculture
USDOI.....	United States Department of the Interior
VA.....	Value Analysis

Appendix C: List of Figures

Figure 1: Plot Plan of the Union Building Site	14
Figure 2: A&E Value Analysis Participants, July 21-28, 2008.....	14
Figure 3: Existing Conditions, First Floor of Union Building	15
Figure 4: VA Sketch, Floor Plan, First Floor of Union Building, Alternative 1.....	16
Figure 5: Exhibit Plan, First Floor of Union Building, Alternative 1	17
Figure 6: Exhibit Plan, Second Floor of Union Building, Alternative 1.....	17
Figure 7: SE Corner of First Floor: Proposed Location of Elevator/Stair Core	18
Figure 8: Second Floor Kitchen: Proposed Location of Elevator/Stair Core.....	18
Figure 9: Third Floor Kitchen: Proposed Location of Elevator/Stair Core.....	19
Figure 10: Exhibit Plan, Second Floor of Union Building, Alternative 1	21
Figure 11: Second Floor Exhibit Room Showing Existing Stage Platform.....	22
Figure 12: VA Sketch, Floor Plan, First Floor of Union Building, Alternative 2.....	23
Figure 13: VA Sketch, Floor Plan, First Floor of Union Building, Alternative 3.....	24
Figure 14: Existing Conditions, Basement of Union Building	75
Figure 15: Existing Conditions, First Floor of Union Building	75
Figure 16: Existing Conditions, Second Floor of Union Building.....	76
Figure 17: Existing Conditions, Third Floor of Union Building.....	76
Figure 18: Union Building after Exterior Rehabilitation	77
Figure 19: South Side, Accessible Entrance	77
Figure 20: East Side, Service Entrance	77
Figure 21: First Floor, North Side, West End	78
Figure 22: First Floor, North Side, East End.....	78
Figure 23: Second Floor Lodge Room, West End	79
Figure 24: Second Floor, Robing Room	79
Figure 25: Third Floor Lodge Room and Stage after Exterior Rehabilitation Project.....	80
Figure 26: Third Floor Restroom	80
Figure 27: Street Level, Keweenaw Printing Company Store, c.1915.....	81
Figure 28: Free and Accepted Masons 50 th Anniversary, Union Building, Third Floor Lodge Room.....	81