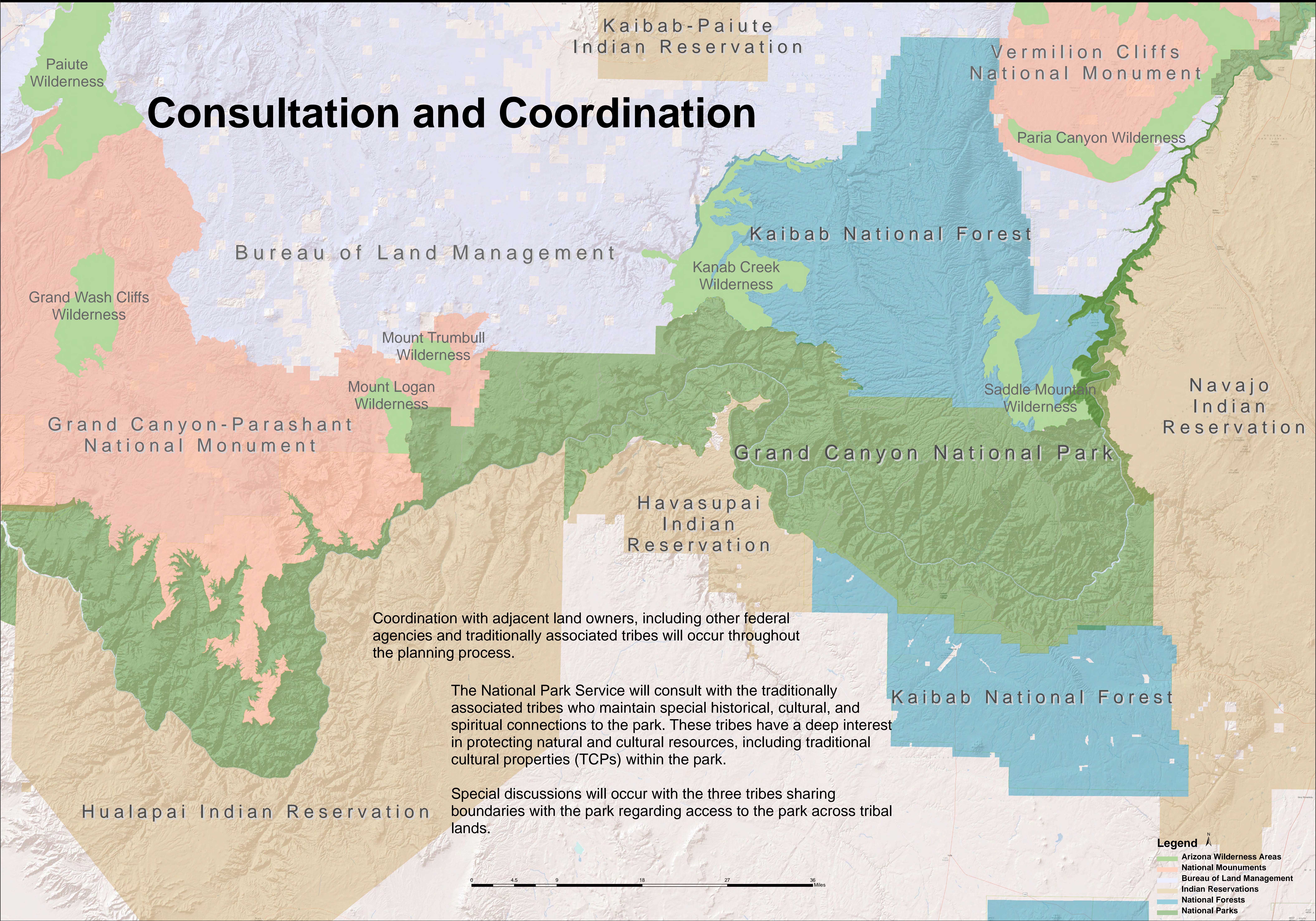




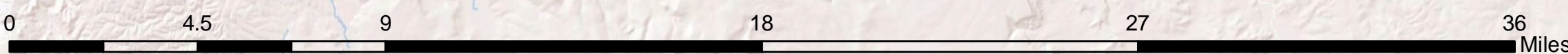
Consultation and Coordination



Coordination with adjacent land owners, including other federal agencies and traditionally associated tribes will occur throughout the planning process.

The National Park Service will consult with the traditionally associated tribes who maintain special historical, cultural, and spiritual connections to the park. These tribes have a deep interest in protecting natural and cultural resources, including traditional cultural properties (TCPs) within the park.

Special discussions will occur with the three tribes sharing boundaries with the park regarding access to the park across tribal lands.



Legend

- Arizona Wilderness Areas
- National Monuments
- Bureau of Land Management
- Indian Reservations
- National Forests
- National Parks