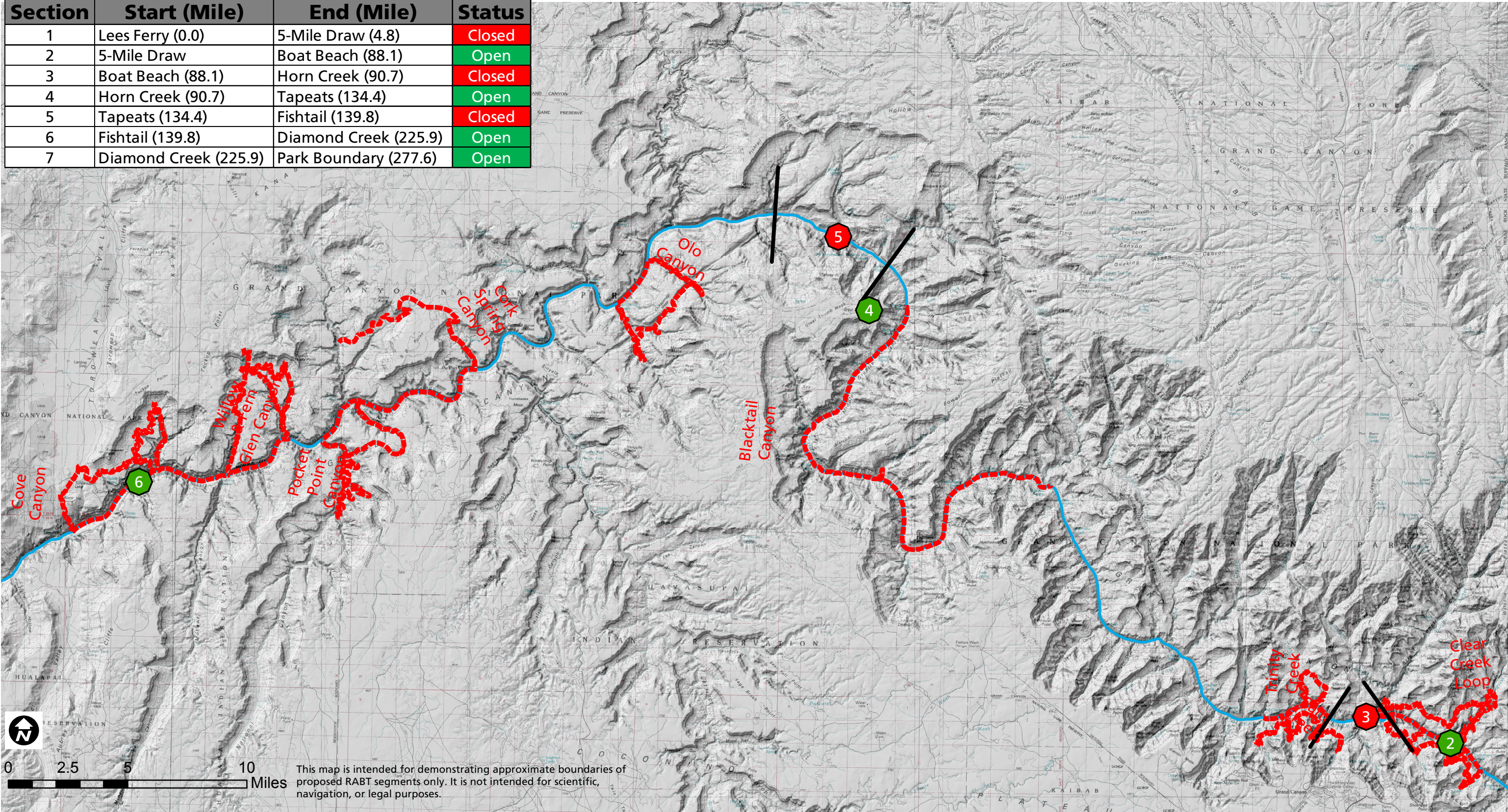




Alternative D RABT Segments Map 2

| Section | Start (Mile) | End (Mile) | Status |
|---------|-----------------------|-----------------------|--------|
| 1 | Lees Ferry (0.0) | 5-Mile Draw (4.8) | Closed |
| 2 | 5-Mile Draw | Boat Beach (88.1) | Open |
| 3 | Boat Beach (88.1) | Horn Creek (90.7) | Closed |
| 4 | Horn Creek (90.7) | Tapeats (134.4) | Open |
| 5 | Tapeats (134.4) | Fishtail (139.8) | Closed |
| 6 | Fishtail (139.8) | Diamond Creek (225.9) | Open |
| 7 | Diamond Creek (225.9) | Park Boundary (277.6) | Open |



This map is intended for demonstrating approximate boundaries of proposed RABT segments only. It is not intended for scientific, navigation, or legal purposes.