



Appendix J

Fire History

Map J-1: Wildland Fire Location Map

Wildland Fire History 1974-2006

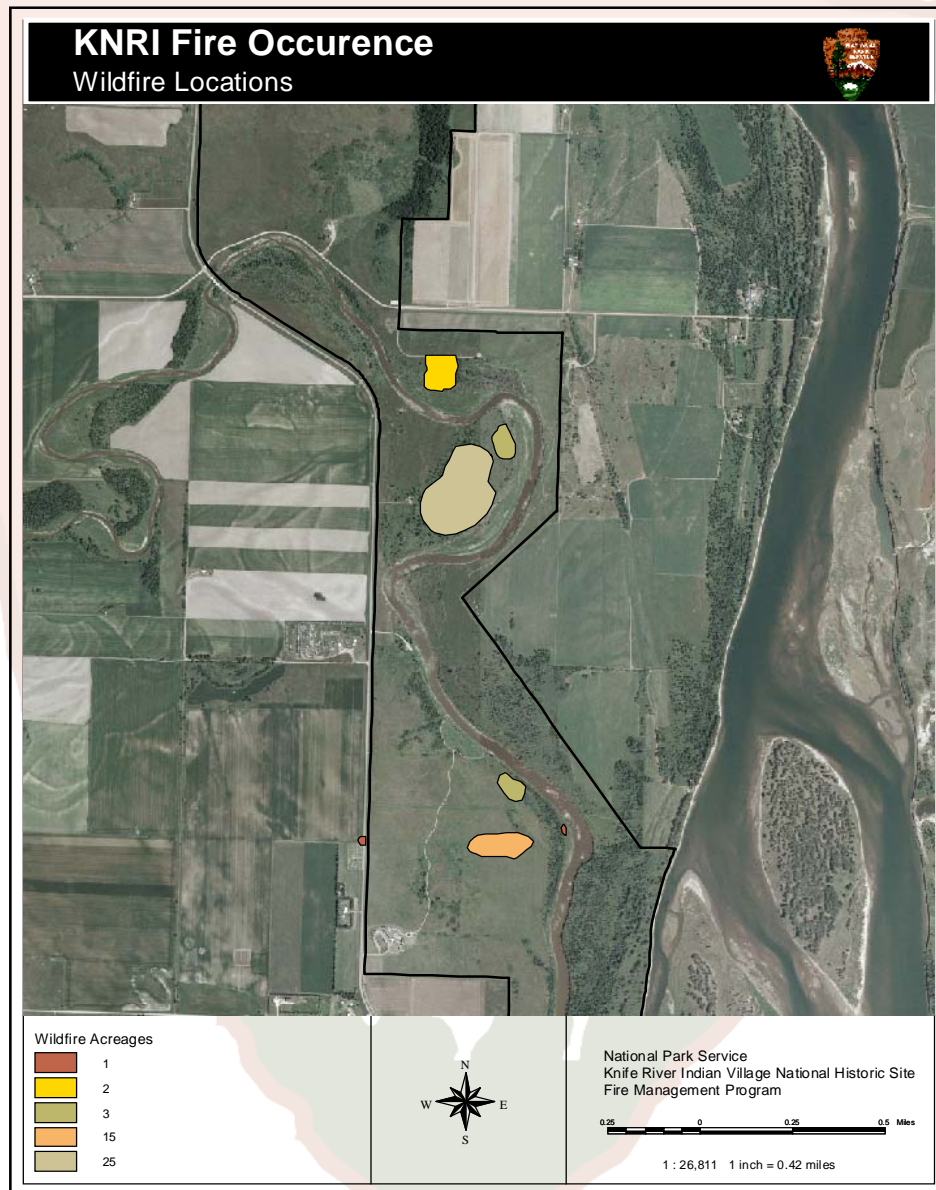
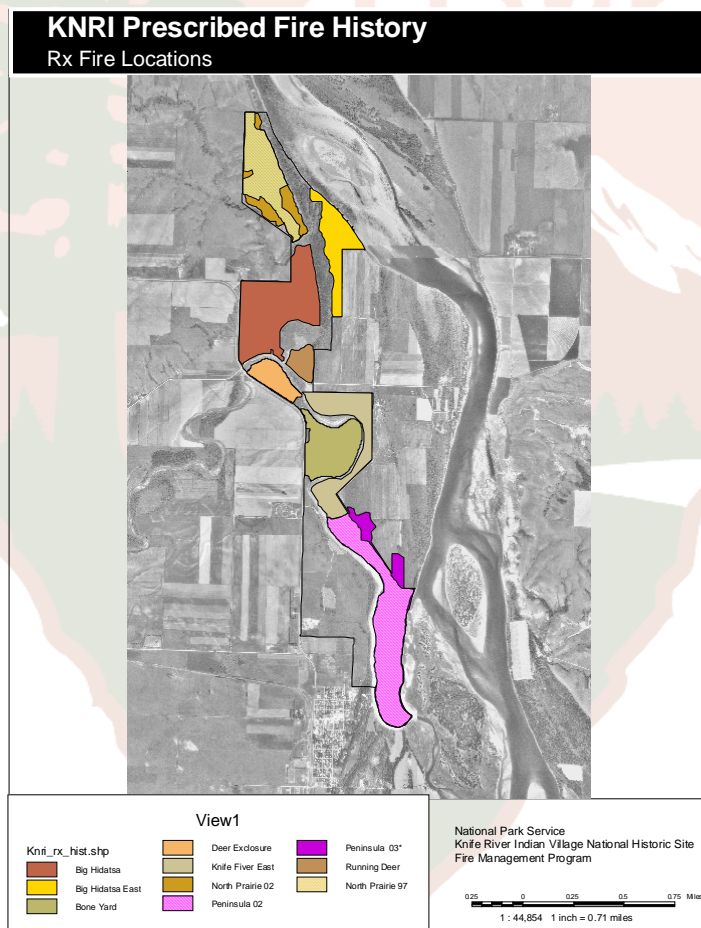




Table J-2: Wildland Fire Acreages, Date and Cause

TYPE	DATE	ACREAGE	CAUSE	VEG TYPE
Wildfire	8/14/2006	1	Human	Prairie Area
Wildfire	8/13/1983	3	Arson	Woodland Area
Wildfire	10/27/1983	25	Arson	Woodland Area
Wildfire	4/10/1995	2	Unknown	Woodland Area
Wildfire	10/12/1992	15	Arson	Prairie Area
Wildfire	6/10/1979	1	Arson	Riparian Area
Wildfire	5/13/1970	3	Arson	Prairie Area

MapJ-3: Prescribed Fire Location Map



Plot date: October 12, 2004 c:\gis and gpe\gis\data\fire\mp_brnz10_04.apr



Table J-4: Prescribed Fire Acreages, Year and Month

NAME	ACRES	YEAR	MONTH	AREA	PERIMETER
Knife River East	140	2001	10	566360	6090.00
North Prairie 97	103	1997	10	424585	4203.00
North Prairie 02	137	2002	10	566853	4001.00
Bone Yard	106	2001	10	430842	2799.00
Deer Exclosure	45	2001	10	183201	1846.00
Peninsula 02	185	2002	4	871114	6382.00
Running Deer	25	1999	9	1003	325.00
Big Hidatsa East	78	1999	9	315103	3998.00
Big Hidatsa	203	1999	9	822412	4859.00
Peninsula 03*	222	2003	4	897199	7269.00

* Peninsula 03 contained 37 acres of private land

WILDLAND FIRE SUPPRESSION

The park will make every effort to suppress all wildfires through initial attack actions. All available park and local firefighting resources will be utilized as necessary to limit damage to values at risk, prevent escape of wildfires, and prevent the spread of wildfires across park boundaries.

Unacceptable resource impacts will be avoided as much as possible through aggressive suppression. However, not all wildfires will be suppressed with the same degree of intensity. A full range of actions to low intensity, are preplanned to meet management objectives of individual units while being cost effective. Such preplanned actions are based upon land management objectives, values threatened, and costs associated with suppression strategies.

The Incident Commander will utilize the appropriate management action with sensitivity toward park resources and concern for safety of firefighter personnel, park employees, park visitors, and park neighbors threatened by wildfire

MANAGEMENT IGNITED PRESCRIBED FIRE

Management ignited prescribed fires are initiated under predetermined weather and fuel moisture conditions. This permits managers to exert substantial influence over the spread and intensity levels that the fire can achieve. These fires are ignited for the purposes of accomplishing resource management objectives. All prescription parameters, ranges, and objectives are clearly stated in an individual project plan for each management ignited prescribed fire.