

An aerial photograph of a campus featuring a large green lawn, a circular driveway with a building in the center, and various other buildings and trees. A red outline is drawn on the image, highlighting a specific area on the left side. The text is overlaid on the right side of the image.

Vietnam Veterans Memorial Center

Section 106 Consultation Meeting

March 5, 2012

Agenda

Design Synopsis

- Ennead

Area of Potential Effects

- AECOM

Effects on Historic Resources

- AECOM

Identification of Mitigation Measures

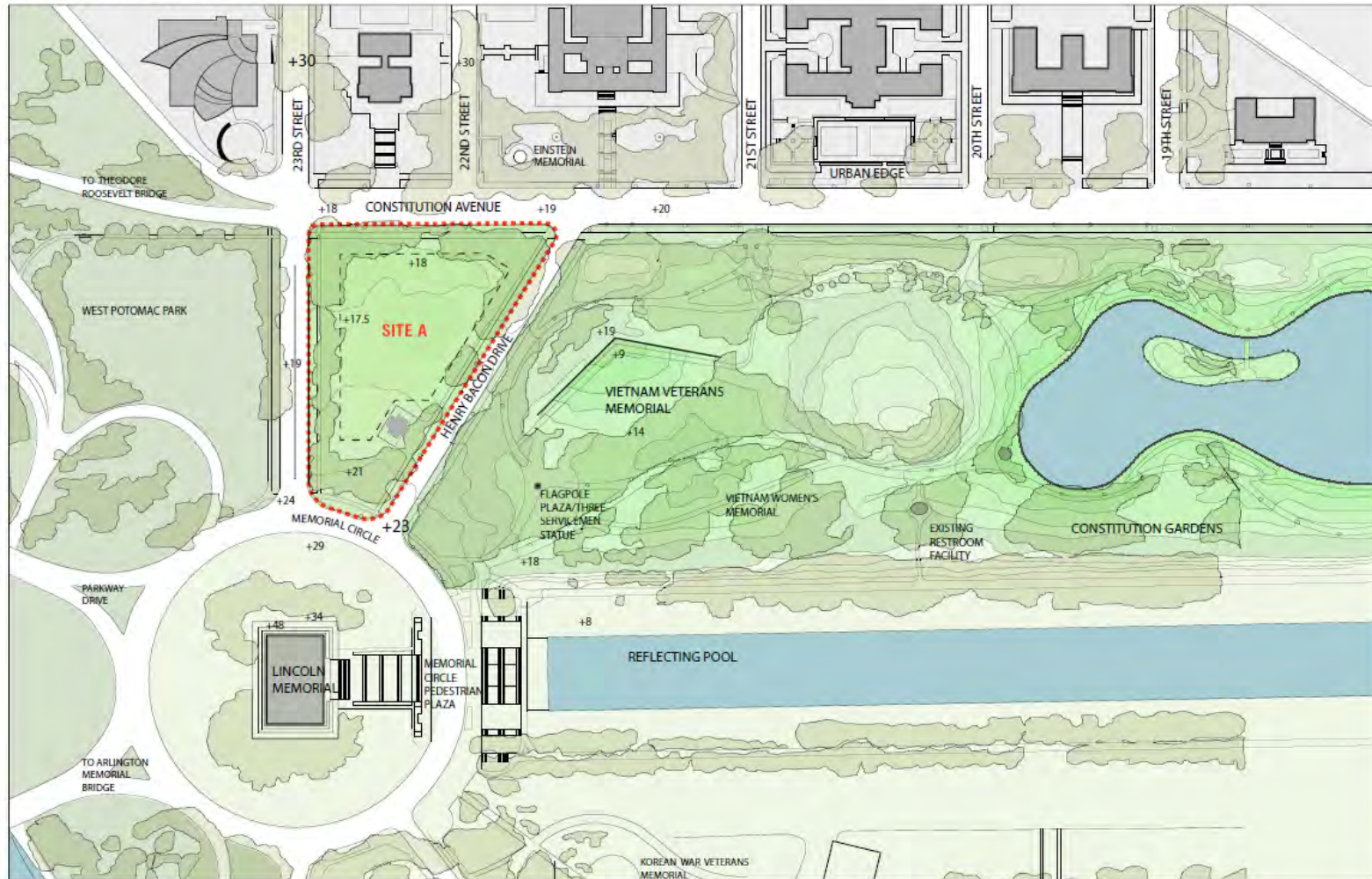
- AECOM

Update on Food Service Kiosk

- NPS

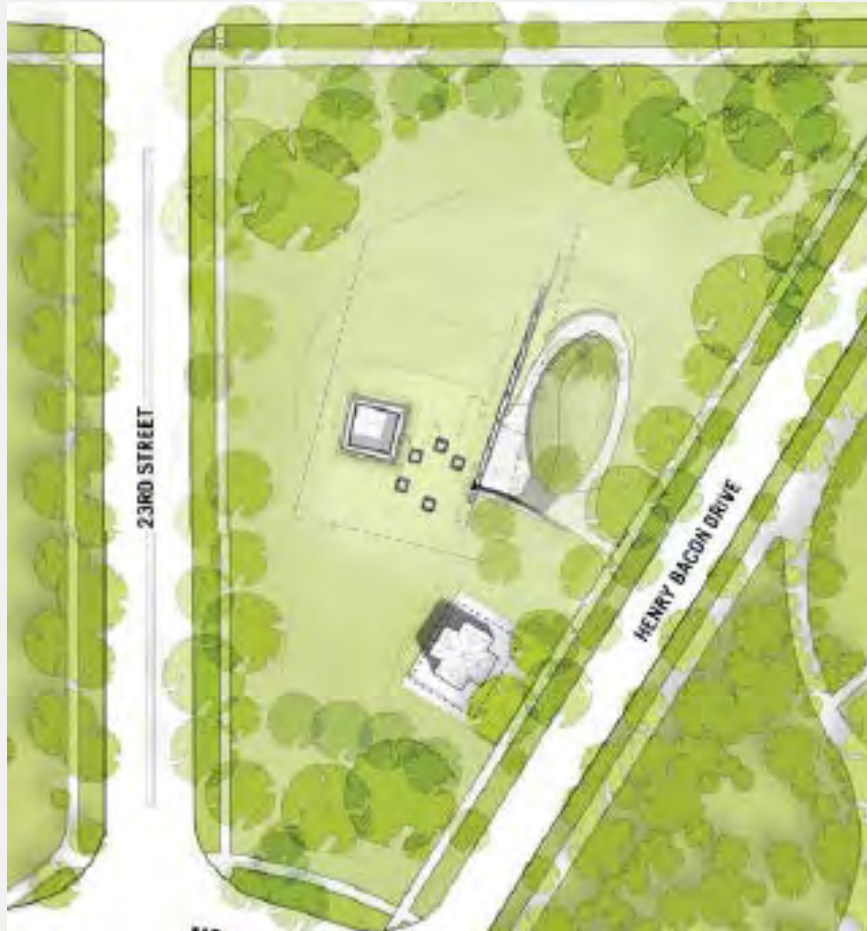
Design Synopsis

2005/2006 - Site "A" Approved



Education Center at The Wall
ENNEAD ARCHITECTS
02.16.12

Design Synopsis



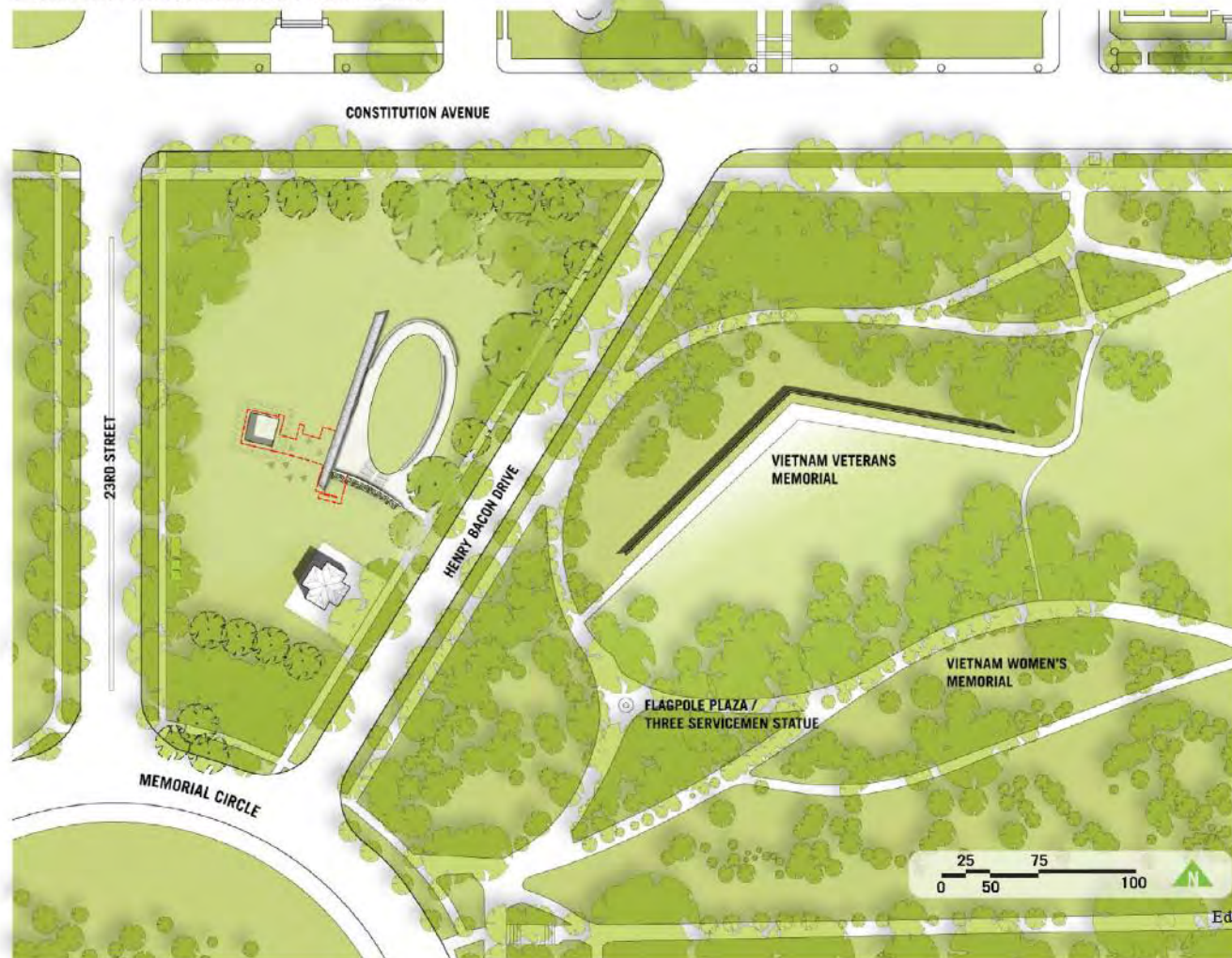
2011 Site Plan



2012 Site Plan (current)

Design Synopsis

Overall Site Plan with Courtyard Profile Below



Design Synopsis

Building/Site - North East Axonometric View



Education Center at The Wall
ENNEAD ARCHITECTS
02.16.12

Design Synopsis

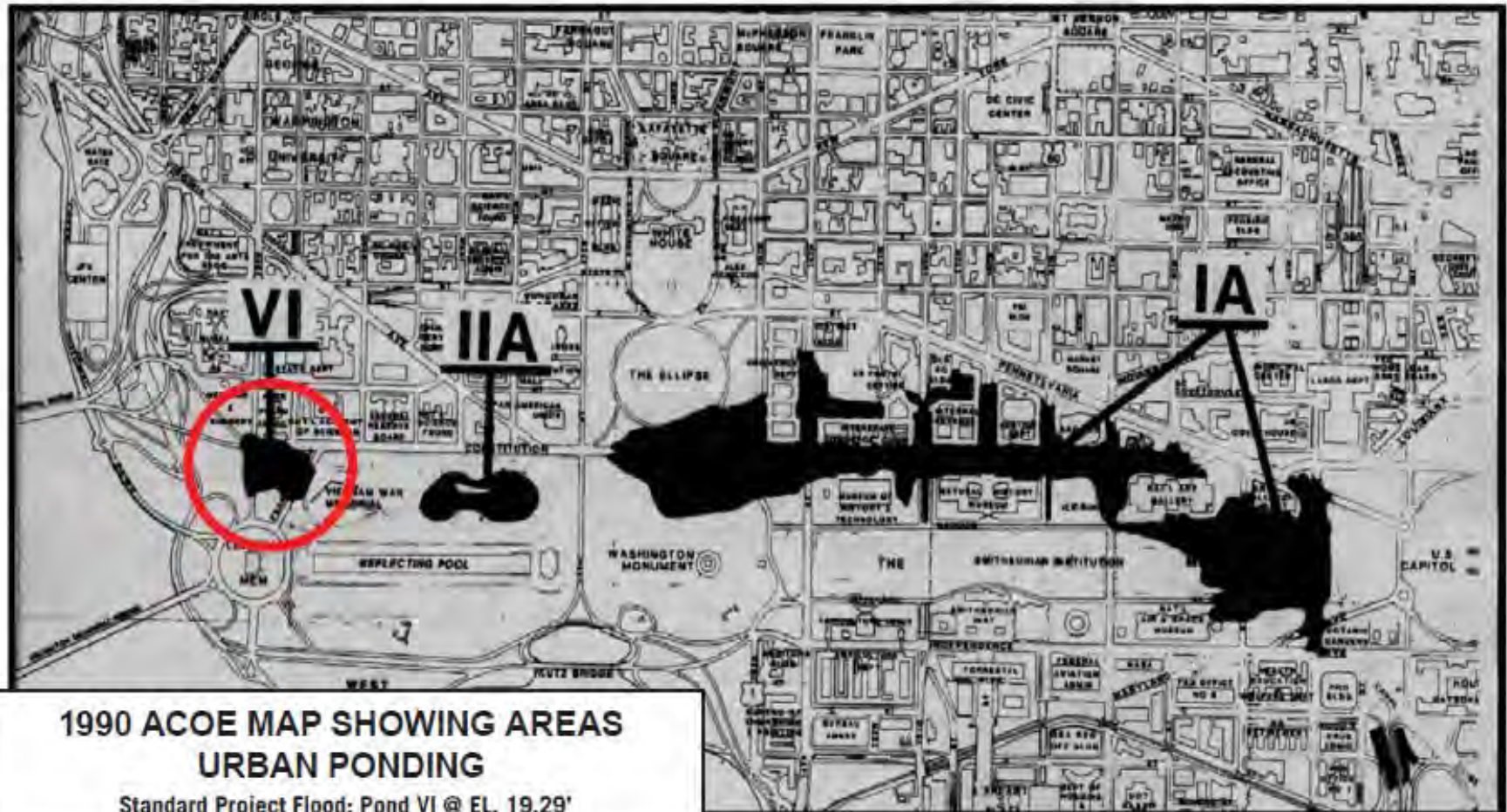
View from Henry Bacon Drive Sidewalk



Education Center at The Wall
ENNEAD ARCHITECTS
02.16.12

Design Synopsis

Army Corps of Engineers Map



Education Center at The Wall
ENNEAU ARCHITECTS
02.16.12

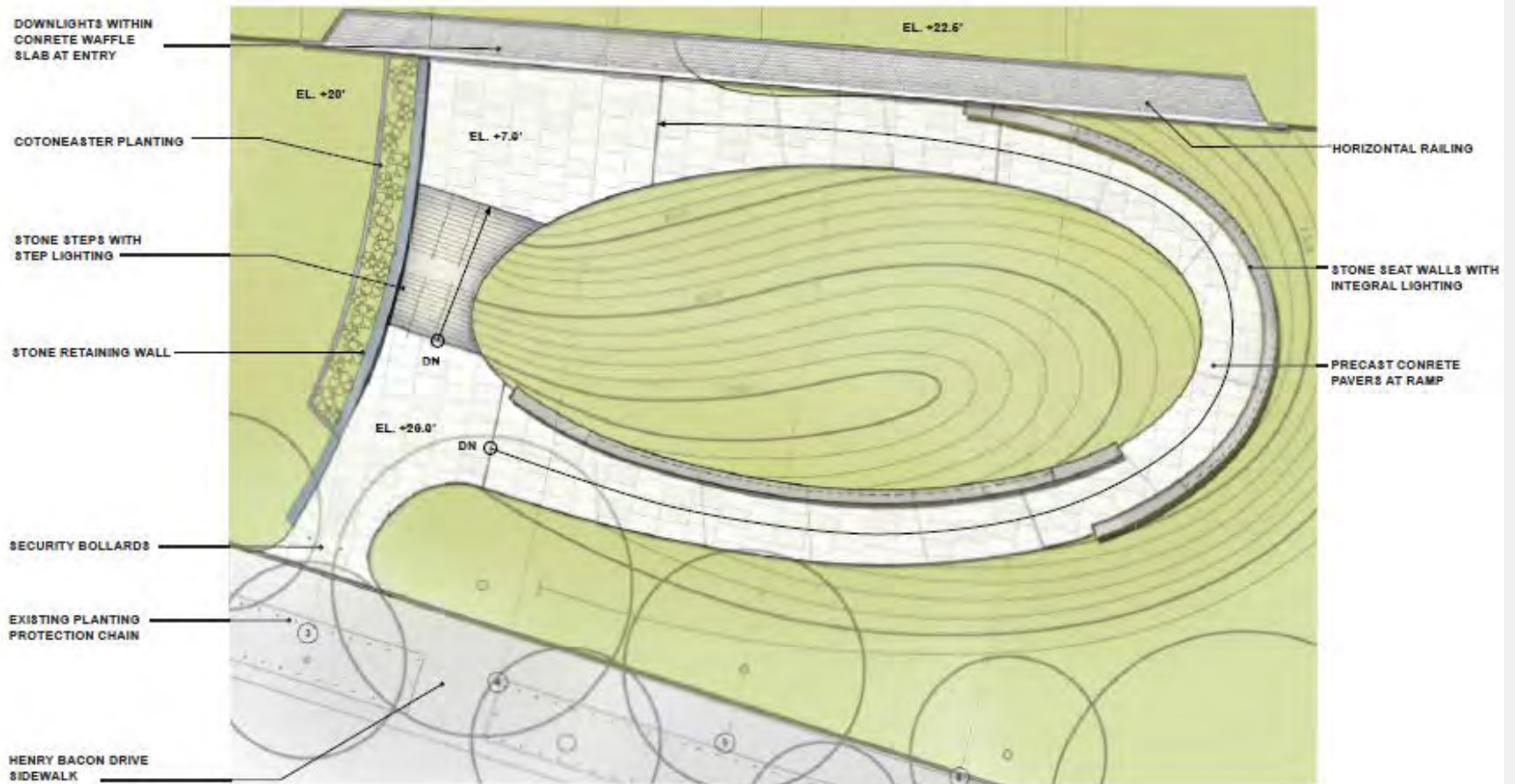
Design Synopsis

Grading for Protection from Urban Ponding



Design Synopsis

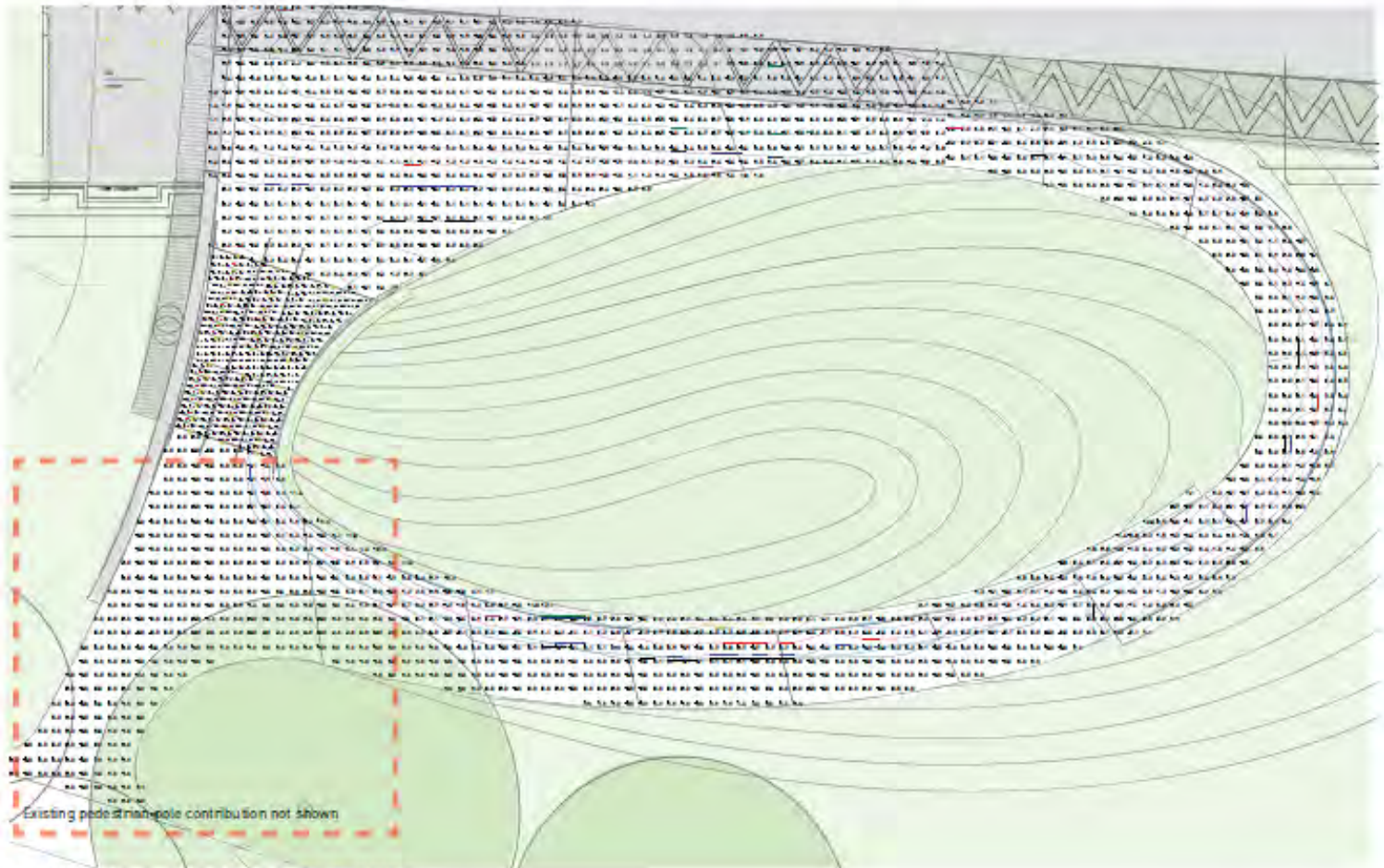
Partial Site Plan at Approach



Education Center at The Wall
 ENNEAD ARCHITECTS
 10.27.11

Design Synopsis

Luminance Analysis at Entry Plaza



LANDSCAPE PLAN - Illuminance Values Unit: foot candles (fc)

bpi

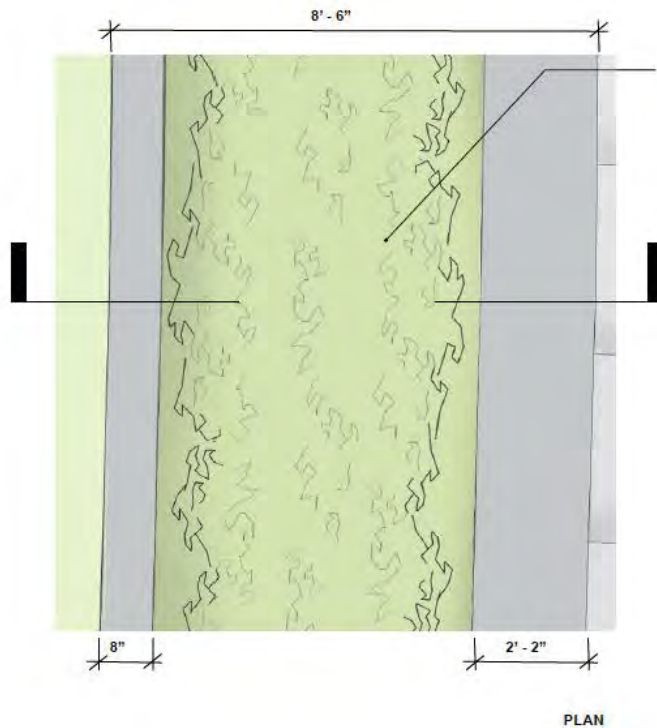
AVERAGE 1FC OF CODE ILLUMINATION
REQUIRED AT EXIT PASSAGEWAY

Education Center at the Wall
Nighttime Illuminance Study

Education Center at The Wall
ENHEAD ARCHITECTS
02.16.12

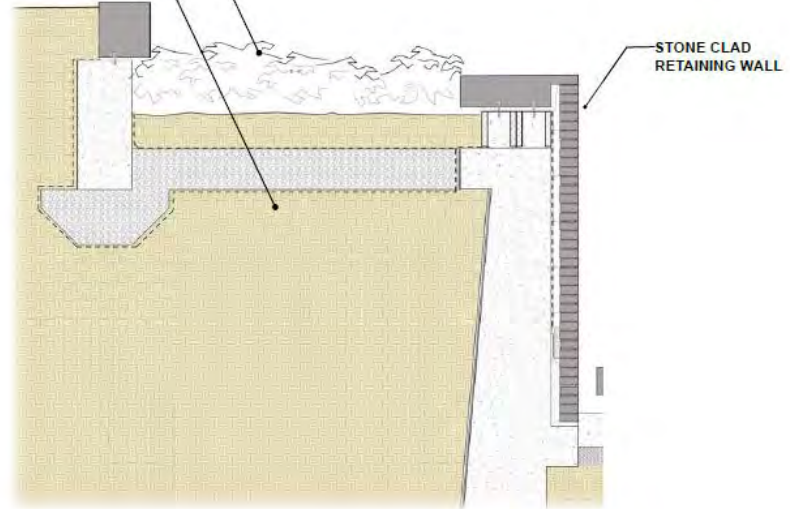
Design Synopsis

Horizontal Rail at Retaining Wall



COTONEASTER
PLANTING

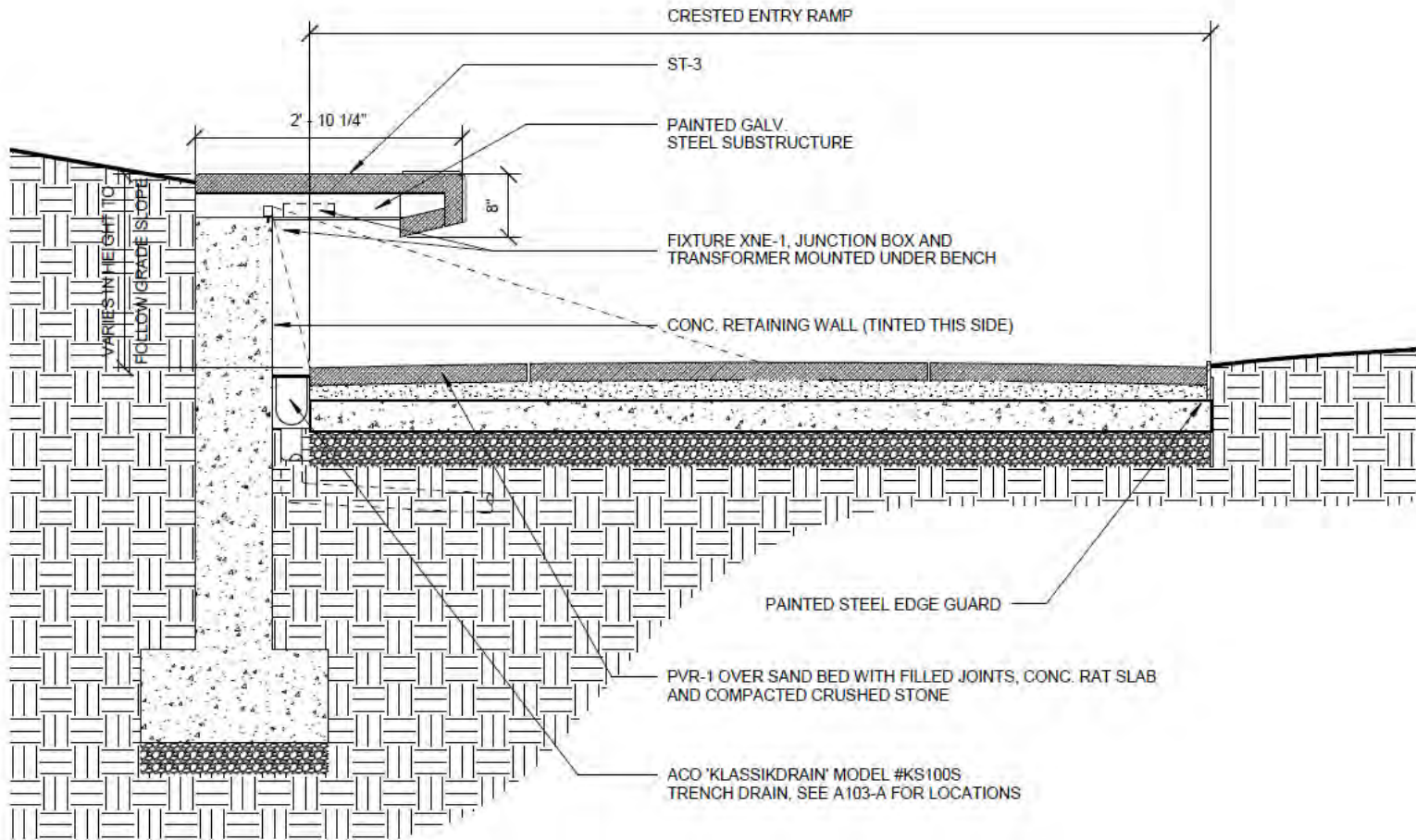
CRUSHED STONE BED



Education Center at The Wall
ENNEAD ARCHITECTS
02.16.12

Design Synopsis

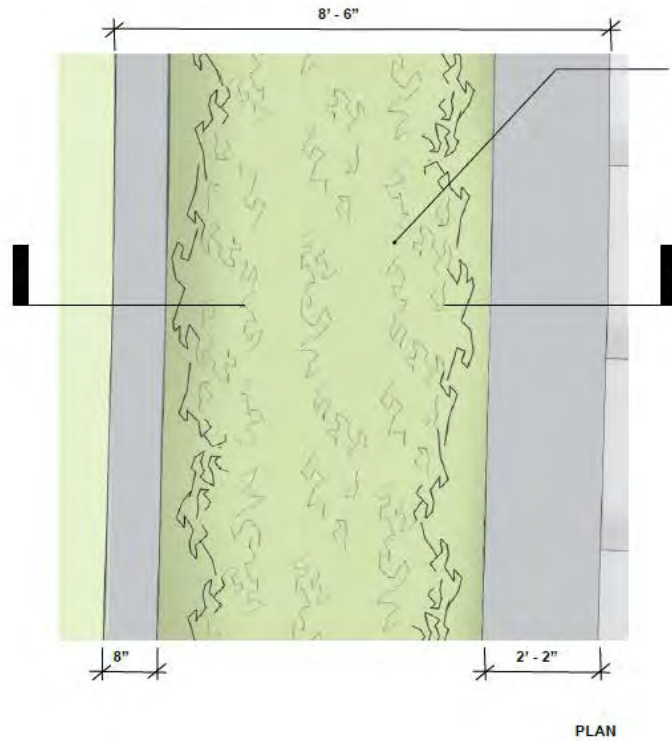
Section Detail at Exterior Site Bench



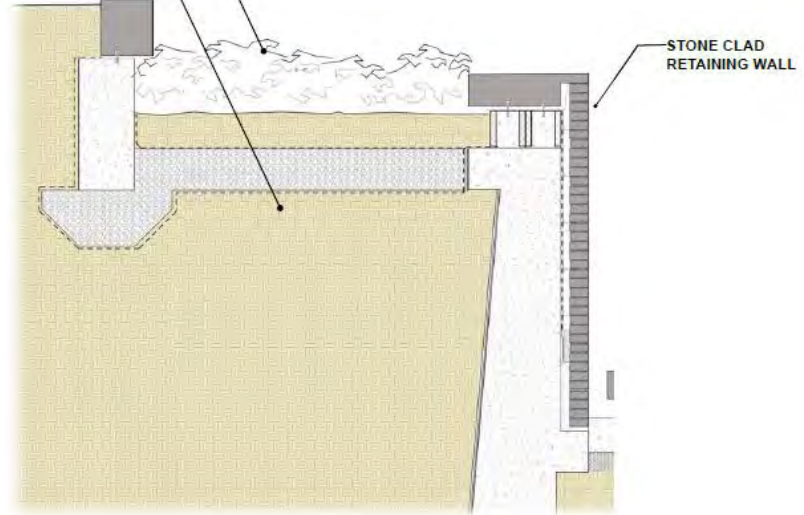
Education Center at The Wall
ENNEAD ARCHITECTS
02.16.12

Design Synopsis

Horizontal Rail at Retaining Wall



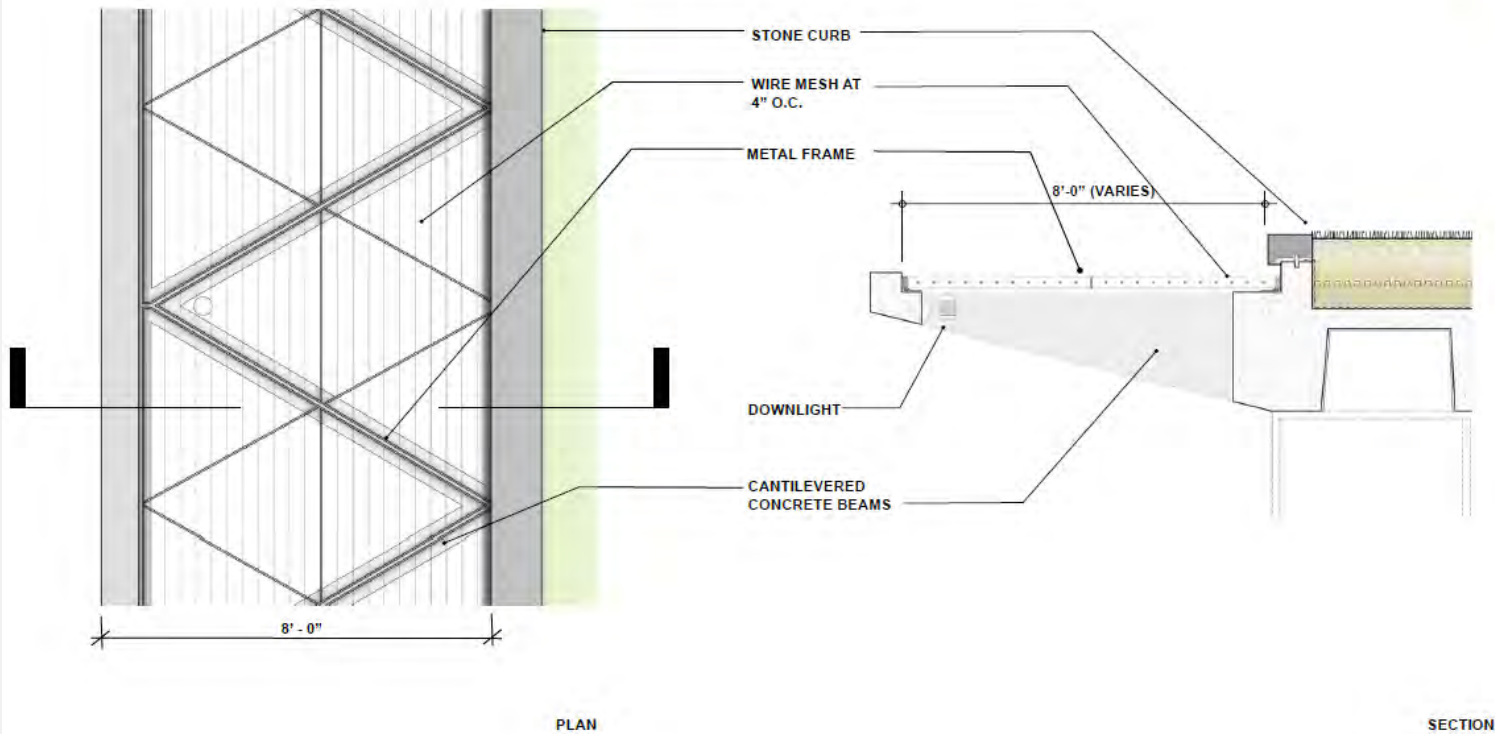
COTONEASTER
PLANTING
CRUSHED STONE BED



Education Center at The Wall
ENNEAD ARCHITECTS
02.16.12

Design Synopsis

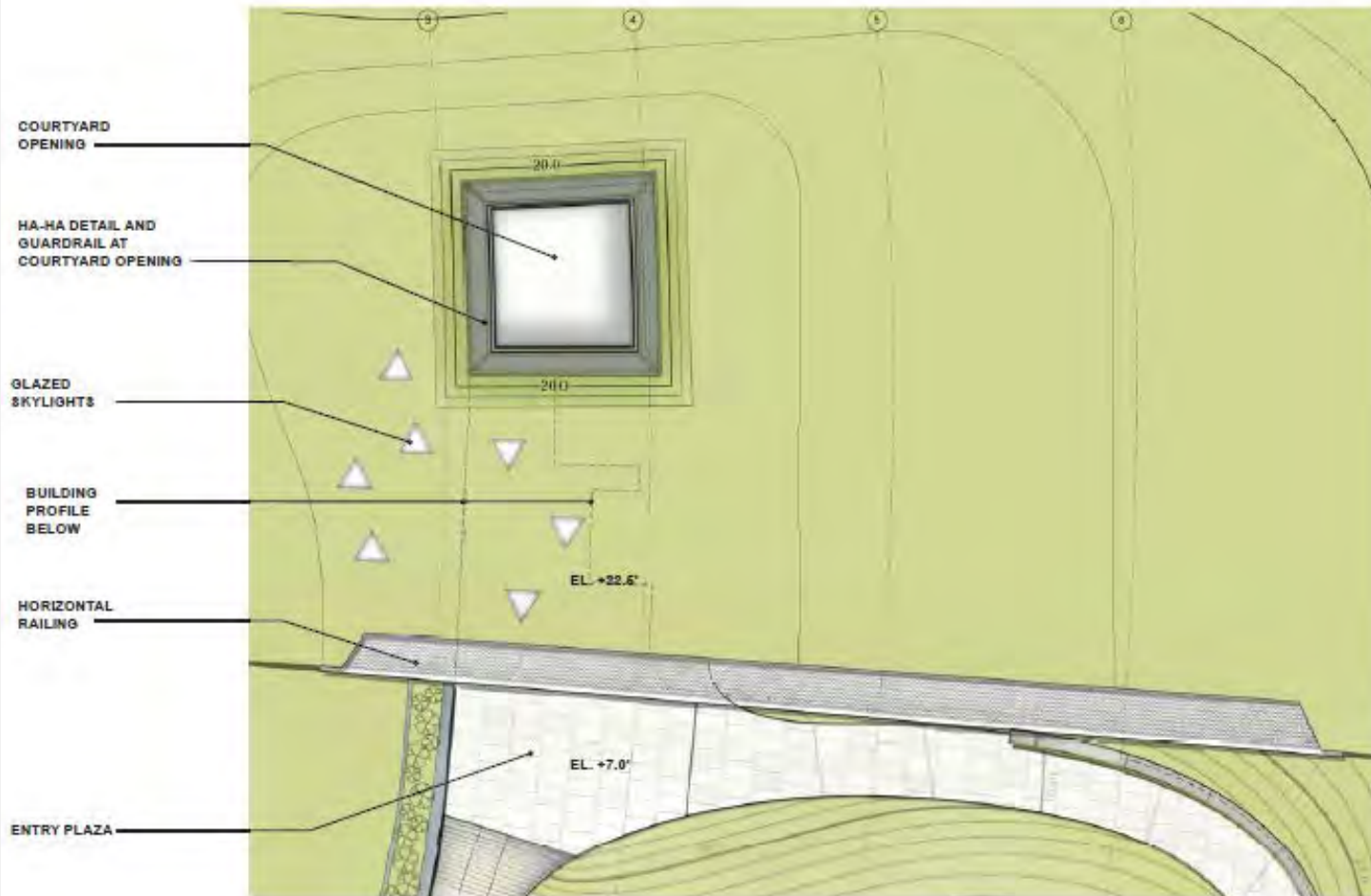
Horizontal Rail at Waffle Slab



Education Center at The Wall
ENNEAD ARCHITECTS
02.16.12

Design Synopsis

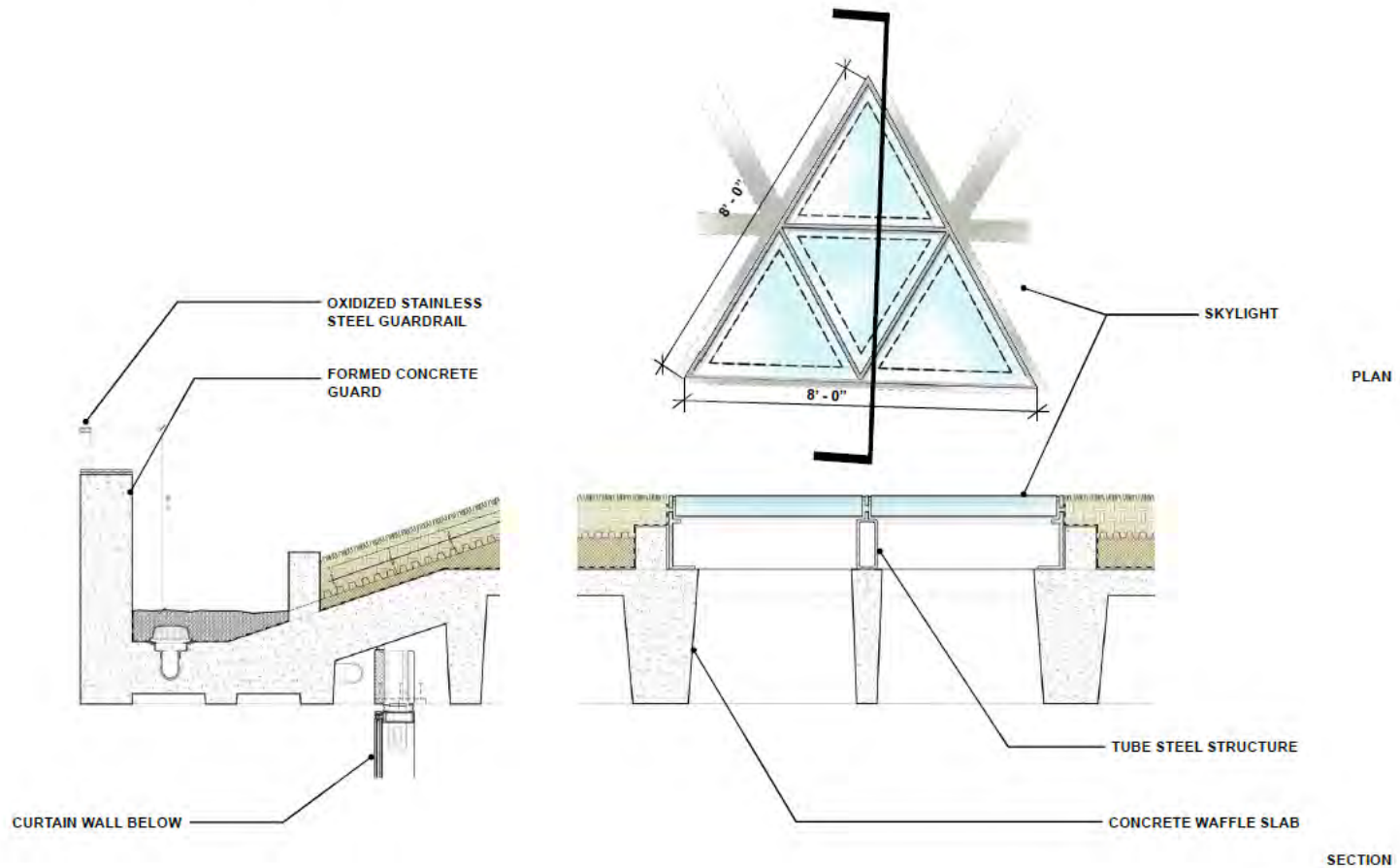
Partial Site Plan at Courtyard Opening/Planted Roof



Education Center at The Wall
ENWEAD ARCHITECTS
12.12.11

Design Synopsis

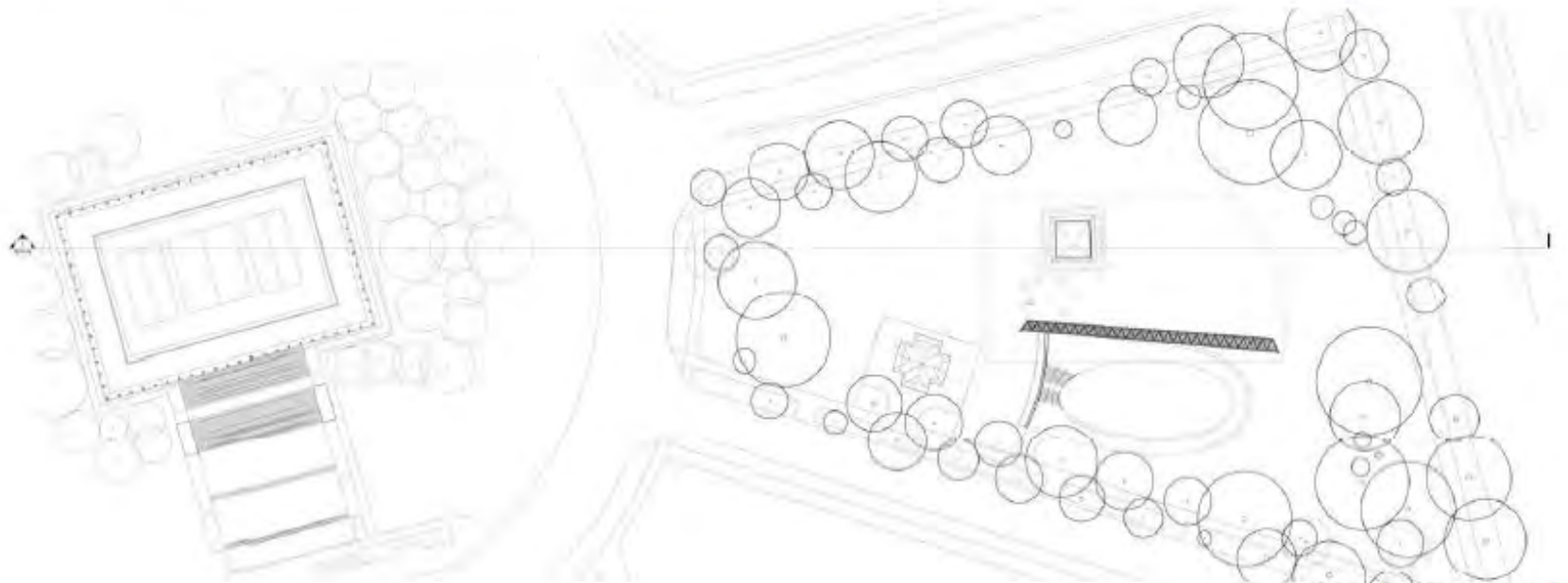
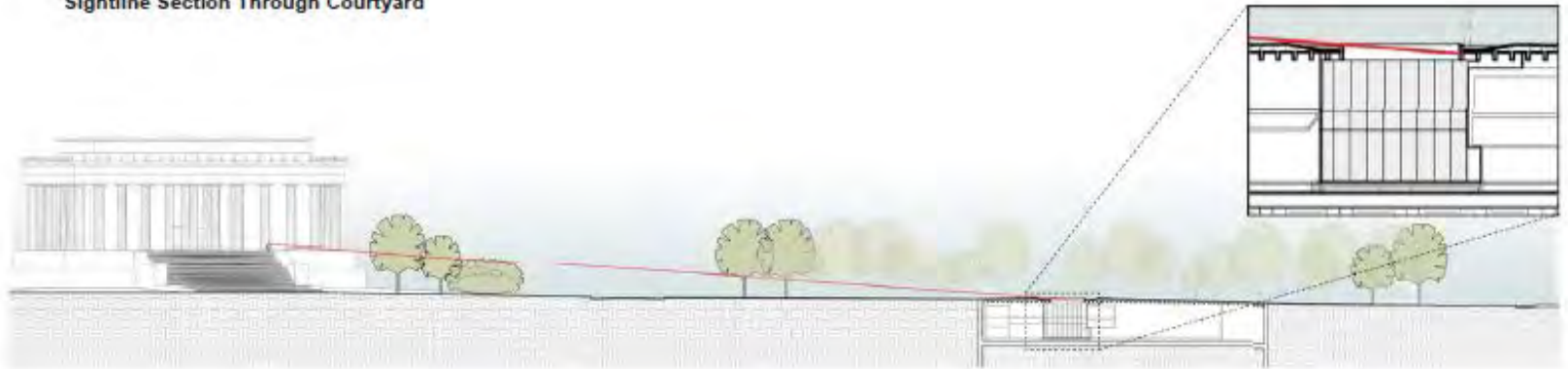
Roof/Ground Plane Details: "Ha-Ha", Skylight, Courtyard Opening



Education Center at The Wall
ENHEAD ARCHITECTS
02.16.12

Design Synopsis

Sightline Section Through Courtyard



Education Center at The Wall
ENNEAD ARCHITECTS
02.16.12

Design Synopsis

View from Bottom of Entry Ramp



Education Center at The Wall
ENNEAD ARCHITECTS
02.16.12

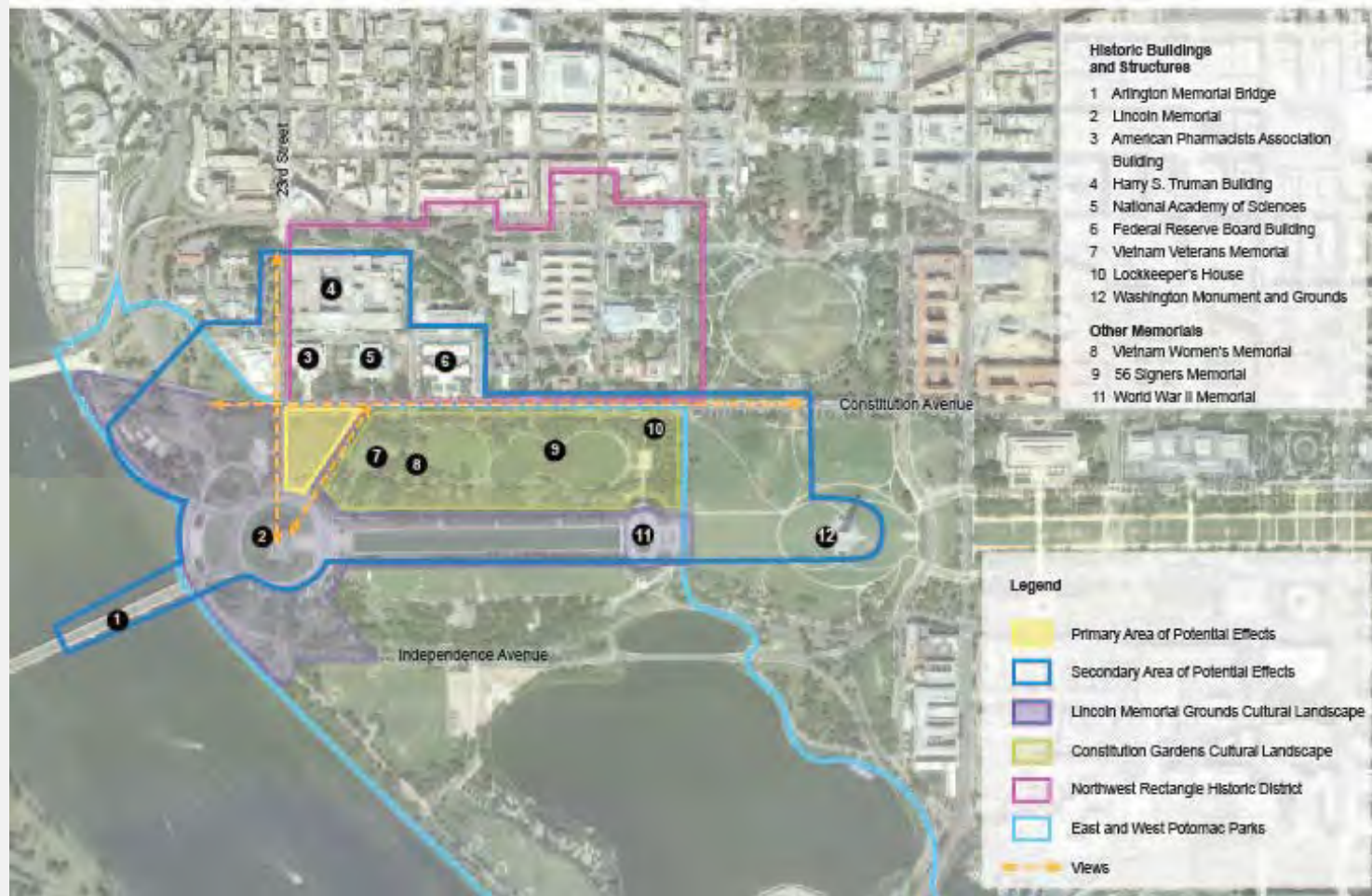
Design Synopsis

View from Bottom of Entry Stair



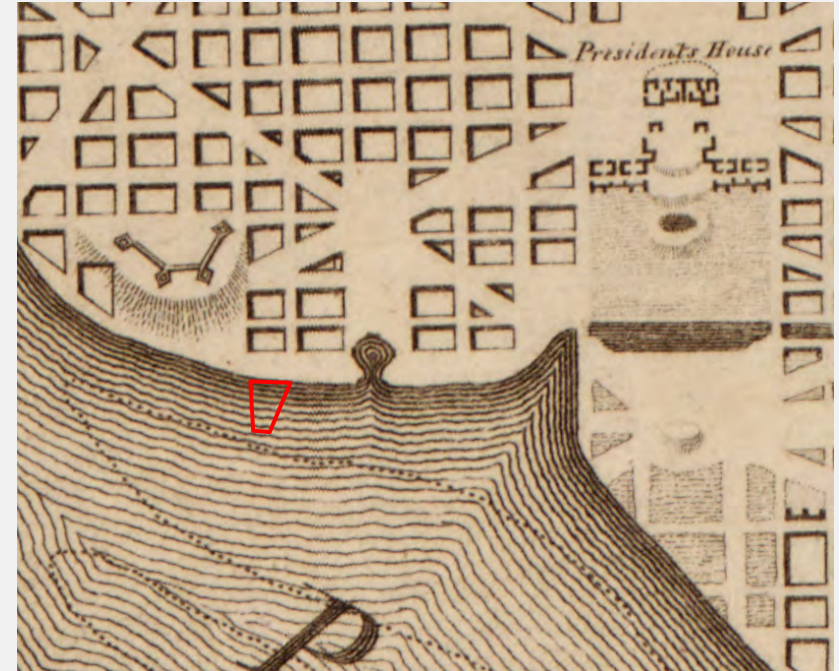
Education Center at The Wall
ENNEAD ARCHITECTS
02.16.12

Area of Potential Effects



Effects on Historic Resources: L'Enfant Plan of the City of Washington

- Listed on the National Register of Historic Places (NRHP) and includes 1791 L'Enfant Plan and McMillan Plan
- Project site part of Reservation 332 (West Potomac Park)
 - Open grass panel
- Contributing streets include Constitution Avenue, 23rd Street, and Henry Bacon Drive
- Contributing vistas include 23rd Street and Constitution Avenue



Effects on Historic Resources: L'Enfant Plan of the City of Washington



Simulation view looking southwest along Henry Bacon Drive

Effects on Historic Resources: L'Enfant Plan of the City of Washington



Simulation view of site from 23rd Street and Constitution Avenue

Effects on Historic Resources: L'Enfant Plan of the City of Washington



View looking north from Lincoln Memorial

Effects on Historic Resources: L'Enfant Plan of the City of Washington

- Change in character of project site from solid grass panel to an interrupted panel
- Alteration of views
 - 23rd Street
 - Constitution Avenue
 - Henry Bacon Drive

Finding of *adverse effect*



Simulation view of site from Constitution Ave. and 23rd St.



Simulation view looking southwest along Henry Bacon Drive

Effects on Historic Resources: Lincoln Memorial

- Located south/southwest of project site
- Listed on the NRHP
- Designed by Henry Bacon to resemble a Greek temple
- 19-foot tall sculpture of Lincoln within the memorial chamber



Effects on Historic Resources: Lincoln Memorial



View looking northeast to site at night from Lincoln Memorial steps in current conditions

Effects on Historic Resources: Lincoln Memorial



Simulation view looking northeast to site from Lincoln Memorial steps

Effects on Historic Resources: Lincoln Memorial

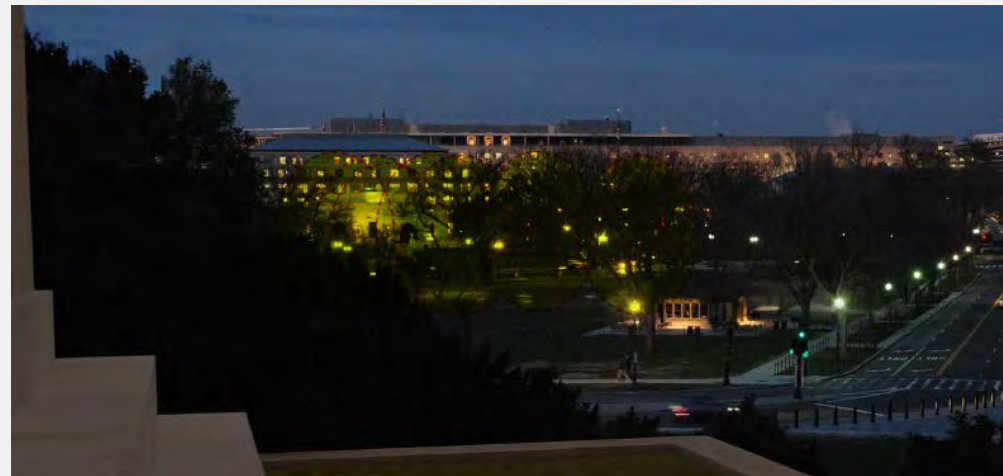


Simulation view looking northeast to site at night from Lincoln Memorial steps

Effects on Historic Resources: Lincoln Memorial

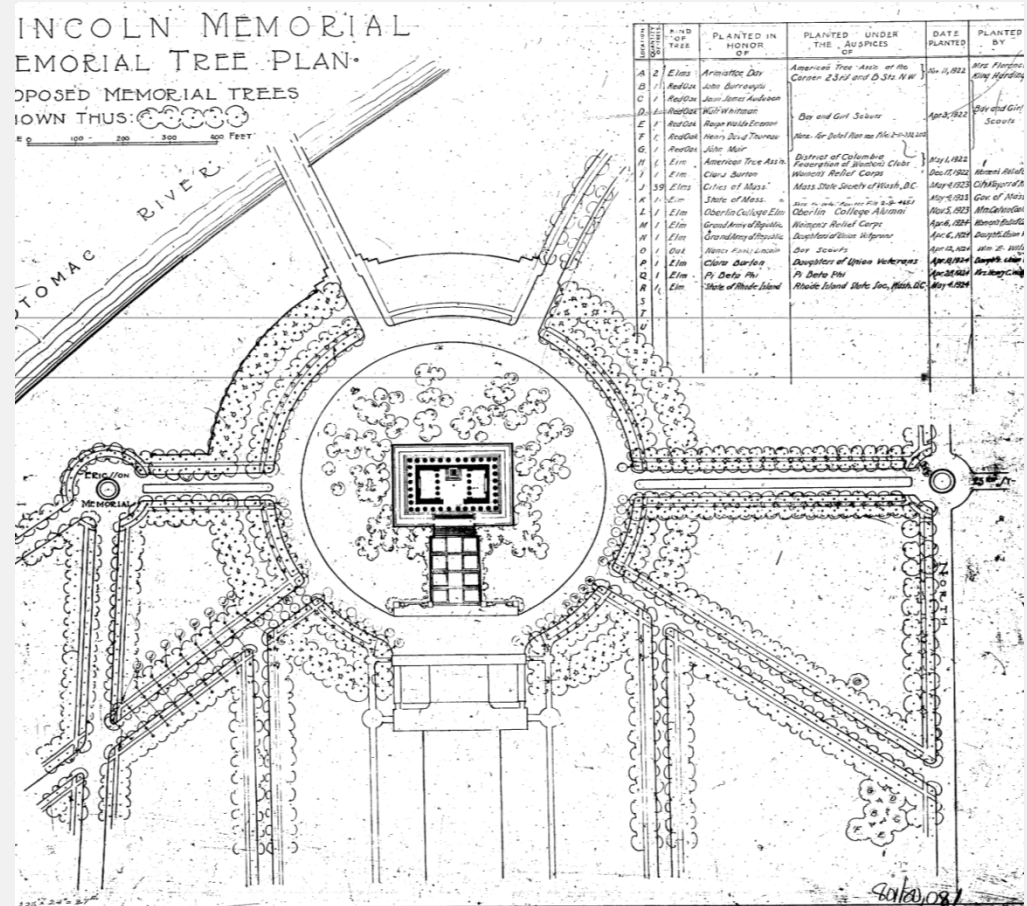
- Change in setting through alterations of solid grass panel
- Potential interference with night lighting

Finding of *adverse effect*

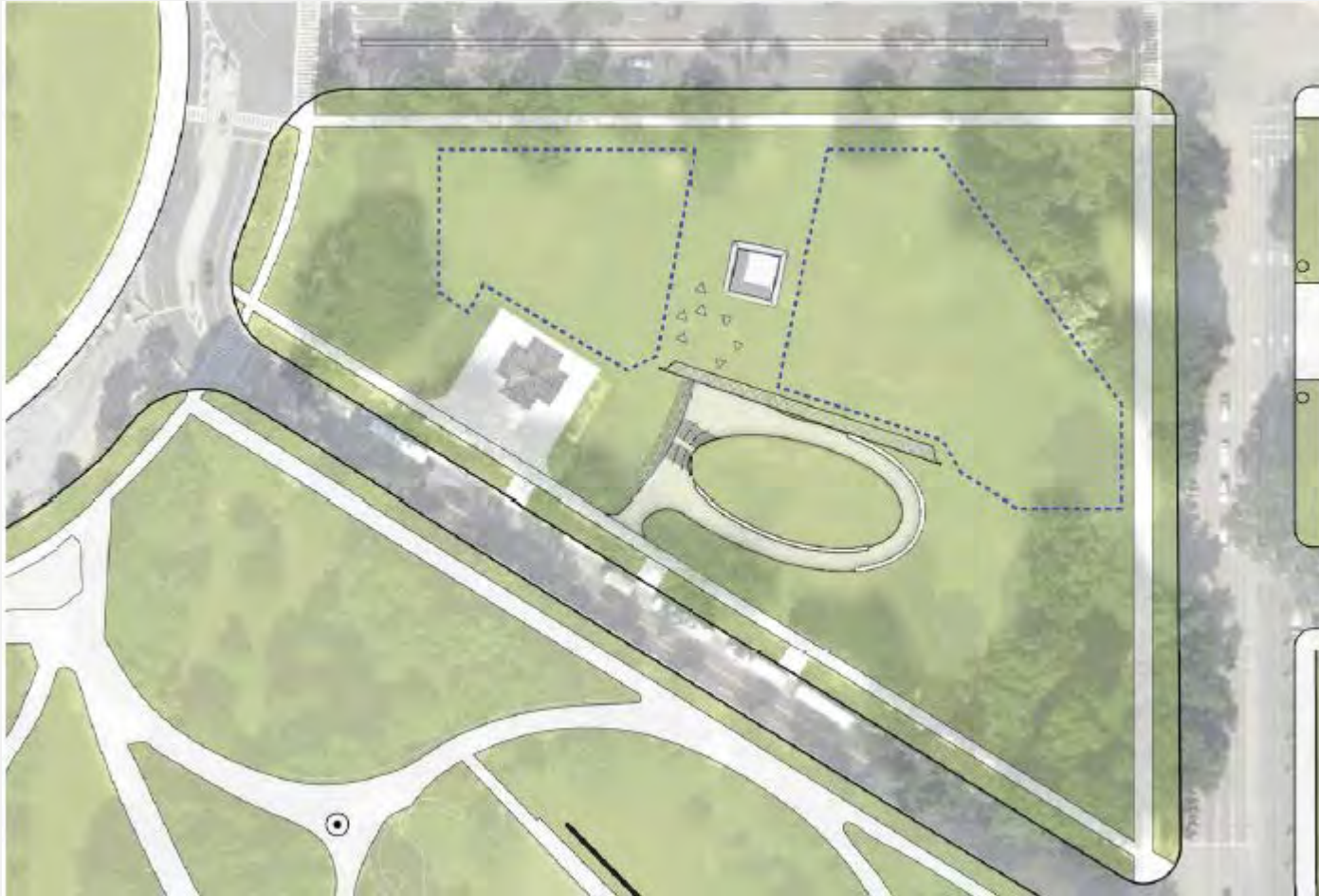


Effects on Historic Resources: Lincoln Memorial Grounds

- Project site is part of the Lincoln Memorial Grounds
- Includes Lincoln Memorial Circle and Radial Roads, Watergate Steps, and Reflecting Pool
- Historic use for active and passive recreation
- Landscape design a contributing feature
 - Radial roads feature double rows of elms
 - Lincoln Memorial Circle features two double rows of elms
- Designed by Frederick Law Olmstead, Jr.



Effects on Historic Resources: Lincoln Memorial Grounds



Location of multi-purpose recreation space

Effects on Historic Resources: Lincoln Memorial Grounds



Simulation view from base of Lincoln Memorial looking north

Effects on Historic Resources: Lincoln Memorial Grounds



Simulation view from base of Lincoln Memorial at night looking north

Effects on Historic Resources: Lincoln Memorial Grounds

- Alteration to multi-purpose recreation area
- Change in solid grass panel
- Potential interference with night lighting

Finding of *adverse effect*



Simulation view from base of Lincoln Memorial looking north



Simulation view from base of Lincoln Memorial at night

Effects on Historic Resources: East and West Potomac Parks Historic District

- **Project site located within West Potomac Park**
- **Listed on NRHP**
- **Created through reclaimed mudflats**
- **Contributing elements include Lincoln Memorial, Lincoln Memorial Grounds, and Vietnam Veterans Memorial**



Effects on Historic Resources: East and West Potomac Parks Historic District

- Change in solid grass panel
- Potential interference with night lighting

Finding of *adverse effect*



Simulation view from base of Lincoln Memorial looking north



Simulation view from base of Lincoln Memorial at night

Effects on Historic Resources: Vietnam Veterans Memorial and Vietnam Women's Memorial

- Located east of project site
- Dedicated in 1982
- Maintains open feeling of landscape
- Relates to the Washington Monument and the Lincoln Memorial
- Vietnam Women's Memorial statue dedicated in 1993



Vietnam Veterans Memorial



Vietnam Women's Memorial

Effects on Historic Resources: Vietnam Veterans Memorial and Vietnam Women's Memorial



Simulation view looking west from Vietnam Veterans Memorial to project site

Effects on Historic Resources: Vietnam Veterans Memorial and Vietnam Women's Memorial

- Trees filter views
- Limited opportunity for light interference

Finding of *no adverse effect*



Simulation view from Vietnam Veterans Memorial to project site

Effects on Historic Resources: American Pharmacists Association Building

- Located across Constitution Avenue from project site
- Listed on the NRHP
- Sloping lawn mimics the Lincoln Memorial
- Constructed 1933-1934
- Designed by John Russell Pope



American Pharmacists Association Building
(from Constitution Avenue)

Effects on Historic Resources: American Pharmacists Association Building



View from top steps of the American Pharmacists Association looking south to project site

Effects on Historic Resources: American Pharmaceutical Association Building

- Trees filter views
- Maintains overall green character of the site
- Limited opportunity for light interference

Finding of *no adverse effect*



View from American Pharmacists Association Building to project site

Effects on Historic Resources: National Academy of Sciences

- Located northeast of project site
- Listed on the NRHP
- Neo-Classical and Art Deco elements
- Designed by Bertram Grosvenor Goodhue
- Dedicated in 1924



National Academy of Sciences Building from Constitution Ave.

Effects on Historic Resources: National Academy of Sciences



View from top middle steps of the National Academy of Sciences looking southwest to project site

Effects on Historic Resources: National Academy of Sciences

- Trees filter views
- Maintains overall green character of the site
- Limited opportunity for light interference

Finding of *no adverse effect*



View from top middle steps of the National Academy of Sciences looking southwest to project site

Effects on Historic Resources: Federal Reserve Building

- Located northeast of project site
- Listed on the DC Inventory of Historic Sites
- Stripped Classical style
- Designed by Paul Cret



Federal Reserve Building (from Constitution Ave.)

Effects on Historic Resources: Federal Reserve Board Building



View from accessible steps of the Federal Reserve Building looking southwest to project site

Effects on Historic Resources: Federal Reserve Board Building

- Site is distant
- Trees filter views
- Limited opportunity for light interference

Finding of no adverse effect



View from accessible steps of the Federal Reserve Building

Effects on Historic Resources: Harry S Truman Building

- Located northwest of project site
- Eligible for the NRHP
- Stripped Classical style with Art Moderne elements
- Designed by Gilbert Stanley Underwood and Dewey Foster
- First phase completed in 1941
- Second phase completed in 1961



Harry S Truman Building (along 23rd Street)

Effects on Historic Resources: Harry S Truman Building



Simulation View from 22nd Street across Constitution Avenue looking south to project site
(note: view not exact, as Harry S Truman Building one block north of viewpoint)

Effects on Historic Resources: Harry S Truman Building

- Site is distant
- Trees filter views
- Limited opportunity for light interference



Finding of *no adverse effect*

Simulation to project site from direction of Harry S Truman Building

Effects on Historic Resources: Arlington Memorial Bridge

- **Located west of project site**
- **Listed on the NRHP**
- **Element of the Neo-classical urban design of National Capital**
- **Symbolic link between Lincoln Memorial and Arlington House**



Arlington Memorial Bridge (from West Potomac Park)

Effects on Historic Resources: Arlington Memorial Bridge



View from Arlington Memorial Bridge looking northwest to project site

Effects on Historic Resources: Arlington Memorial Bridge

- Site is distant
- Trees filter views
- Limited opportunity for light interference

Finding of *no adverse effect*



View from Arlington Memorial Bridge

Effects on Historic Resources: Other Historic Resources

Constitution Gardens

Memorial to 56 Signers of the
Declaration of Independence

Finding of no adverse effect



View looking west to project site from Constitution Gardens

Washington Monument

Finding of no adverse effect



View looking west to project site Washington Monument

Effects on Historic Resources: Other Historic Resources

Lockkeeper's House

Finding of *no adverse effect*



View looking west to project site from Lockkeeper's House

World War II Memorial

Finding of *no adverse effect*



View looking northwest to project site from World War II Memorial

Northwest Rectangle Historic District

Finding of *no adverse effect*

Effects on Historic Resources: Letter to DC SHPO



United States Department of the Interior

NATIONAL PARK SERVICE
National Staff & Memorial Parks
900 Ohio Drive, S.W.
Washington, D.C. 20034-2900



D66 (NCR-NAMA)

FEB 17 2012

David Maloney
State Historic Preservation Officer
District of Columbia Office of Planning
1100 4th Street, SW
Washington, DC 20024

Re: Section 106 Consultation – Vietnam Veterans Memorial Center

Dear Mr. Maloney:

On February 17, 2005, the National Park Service (NPS) wrote to formally initiate consultation with your office on the siting and design for the Vietnam Veterans Memorial Center (the Center). Construction of the Center was authorized by Public Law 108-126, Title I, Section 101, approved November 17, 2003. At the time of the initiation letter, NPS was not prepared to make a formal determination of effect for the Center due to the undetermined nature of the design. However, following the decision to locate the Center at a site on the Lincoln Memorial Grounds, further development of the design, and almost seven years of consultation on the project, NPS now has sufficient information to make a formal determination.

The NPS has concluded that the Center's design fulfills the requirements of the authorizing legislation. Public Law 108-126 states that the Center be located at or near the Vietnam Veterans Memorial, be underground, be minimally sized, and that it not interfere with or encroach on the Vietnam Veterans Memorial. The design protects open space and visual sightlines, and will be landscaped in a manner harmonious with the site of the Vietnam Veterans Memorial as mandated by the legislation.

Both a Primary Area of Potential Effects (APE) (the project site) and a larger Secondary APE were identified through the consultation for the site selection. In accordance with 36 CFR 800.4, the Secondary APE was broadly defined in order to address potential visual effects of the proposed Center (see attached). The Secondary APE extended east to 17th Street, west to midway across the Arlington Memorial Bridge, north to C Street and south to Independence Avenue.



During the design process, NPS refined the Secondary APE to better reflect potential effects of the project. As a result, the Secondary APE encompasses the Lincoln Memorial and Grounds, Arlington Memorial Bridge, the recently completed U.S. Institute of Peace, the recently expanded American Pharmacists Association Building, the National Academy of Sciences, the Federal Reserve Board Building, the Harry S Truman Building, the Lookkeeper's House, the Vietnam Veterans Memorial and Vietnam Women's Memorial, the 56 Signers of the Declaration of Independence Memorial, the World War II Memorial, the Northwest Rectangle Historic District, the West Potomac Park Historic District, Constitution Gardens, and the Washington Monument and Grounds.

The Primary and Secondary APEs (see attached) include a number of historic properties. These historic properties include:

- *L'Enfant Plan of the City of Washington*: The Center will be sited within the 640-acre Potomac Park. The 1901 McMillan Park Commission called for the creation of Potomac Park from fast land in the Potomac River. The Center would be located in a section of the park known as West Potomac Park, also referred to as U.S. Reservation 332. The park is a contributing element to the L'Enfant Plan of the City of Washington, which is made up of the 1791 L'Enfant Plan and the McMillan Plan. The L'Enfant Plan of the City of Washington is listed on the National Register of Historic Places. The project site is bounded by Constitution Avenue, NW, a contributing Major Street, and 23rd Street, a contributing North-South Street. The vistas associated with these roads are also identified as contributing elements within the National Register Nomination. Henry Bacon Drive is also considered to be a contributing element due to its importance to the McMillan Plan.
- *Lincoln Memorial and Grounds*: The Center will be located on the commemorative landscape of the Lincoln Memorial, northwest of the Memorial itself. The Lincoln Memorial is listed on the National Register. A Cultural Landscape Report was prepared in 1999 for the Lincoln Memorial Grounds that provides information on the significance of the landscape.
- *Arlington Memorial Bridge*: The Arlington Memorial Bridge, which is listed on the National Register, lies southwest of the Center's site, separated by the Lincoln Memorial. The Arlington Memorial Bridge also contains non-historic vehicular ramps that connect Independence Avenue to the bridge.
- *American Pharmacists Association Building*: The Center would be located across Constitution Avenue directly south of the American Pharmacists Association Building, which is listed on the National Register. The building site was altered in 2003 with the addition of a multi story commercial office building structure.

Effects on Historic Resources: Letter to DC SHPO

- *National Academy of Sciences.* The National Academy of Sciences, which is listed on the National Register, lies across Constitution Avenue northeast of the Center's proposed location. The original 1922 building was expanded.
- *Federal Reserve Board Building.* Listed on the National Register, the Federal Reserve Board Building is located northeast of the project site, across Constitution Avenue.
- *Harry S Truman Building.* The Harry S Truman Building is considered to be eligible for listing on the National Register. It lies approximately one block north of the project site.
- *Lockkeeper's House.* The Lockkeeper's house, also listed on the National Register, lies east of the project site, along Constitution Avenue.
- *Vietnam Veterans Memorial and Vietnam Women's Memorial.* These memorials are located east of the project site across Henry Bacon Drive within Constitution Gardens. These memorials have not been evaluated for listing on the National Register, but are contributing elements to Constitution Gardens and the East and West Potomac Parks Historic District and are considered eligible by their authorizations.
- *56 Signers of the Declaration Independence Memorial.* The memorial is located east of the project site within Constitution Gardens. This memorial has not been evaluated for listing on the National Register, but is a contributing element to Constitution Gardens and is considered eligible by its authorization.
- *World War II Memorial.* The World War II Memorial is located southeast of the project site. This memorial has not been evaluated for listing on the National Register but is considered eligible by its authorization.
- *East and West Potomac Parks Historic District.* This historic district includes the project site, as well as lands to the south, east, and west of the site. The East and West Potomac Parks Historic District is listed on the National Register.
- *Northwest Rectangle Historic District.* This historic district encompasses resources located north of Constitution Avenue, including two resources adjacent to the project site, the American Pharmacists Association Building and the National Academy of Sciences. The Northwest Rectangle Historic District is listed on the National Register.
- *Constitution Gardens.* Constitution Gardens, which was evaluated as a cultural landscape in 2008 and considered eligible for the National Register, lies east of the project site across Henry Bacon Drive.

- *Washington Monument and Grounds.* The Washington Monument, which is listed on the National Register, lies southeast of the project site. A Cultural Landscape Inventory for the Washington Monument Grounds was completed in 2009.

NPS has determined that the proposed concept for the Center, as presented to consulting parties on May 24, 2011, would have an adverse effect on the L'Enfant Plan of the City of Washington, the East and West Potomac Park Historic District, and the Lincoln Memorial and Grounds cultural landscape. These adverse effects would result from alterations of the site's existing grass panel, which was designed as a solid expanse of turf surrounded by rows of trees. The Center would interrupt the grass panel to allow the building entrance and the skylights, both open-air and covered.

Other elements of the Center would cause adverse effects on the Lincoln Memorial and Grounds. The Center would result in changes in the use of the existing grass panel, which has historically been used for active and passive recreation. The site would continue to offer multi-purpose recreation in the remaining open space, but the Center would introduce an additional interpretive use. The Center could also result in an adverse effect from interior and exterior night lighting levels. These levels would be minimized but are required by national building safety codes.

NPS has concluded that the proposed Center would not have an adverse effect on the other historic properties within the APE. Although the Center's entrance and skylight openings would be visible from the National Academy of Sciences, the American Pharmacists Association Building, the Harry S Truman Building, the Vietnam Veterans and Vietnam Women's Memorials, Constitution Gardens, and the Washington Monument, it would not alter the properties' visual contexts due to the low profile of the Center's entrance, the installation of trees consistent with the historic landscaping plan, and changes in topography. The Center would not be visible from the Federal Reserve Board Building, the Lockkeeper's House, or the 56 Signers of the Declaration of Independence Memorial.

We have enclosed a selection of photographs to assist in your review of our determination of effect. The NPS seeks your concurrence with our effects finding as detailed above. This finding will be shared with the Section 106 consulting parties and fully documented within the Environmental Assessment for the project, released for public review on **February 10, 2012**. NPS will also be soliciting your input as we move forward in developing a Memorandum of Agreement (MOA) in accordance with 36 CFR 800.6.

Effects on Historic Resources: Letter to DC SHPO

We appreciate your involvement in this important project and look forward to working with you as the project proceeds.

Sincerely,



Robert A. Vogel
Superintendent
National Mall and Memorial Parks

Enclosures:

APE map
Visuals

cc:

Karry Harris
Advisory Council on Historic Preservation
1100 Pennsylvania Avenue, NW, Suite 803
Washington, DC 20004

Marcel Acosta
National Capital Planning Commission
401 9th Street, NW
Suite 500 – North Lobby
Washington, DC 20576

Mitigation Measures for Discussion

- **Historic landscape plan restoration**
- **Historic memorial tree program interpretation**
- **Completion and verification of light study**

Food Service Kiosk Update

- **Review purpose of food service kiosk**
- **Not necessarily a reduction of impacts to relocate**
- **Consistency with Commemorative Works Clarification and Revisions Act of 2003**