



## Letter from the Superintendent

Dear Friends:

We are continuing to work on the development of a new general management plan (GMP) for Lava Beds National Monument, which will determine the monument's management direction for the next 15 to 20 years.

This newsletter presents four preliminary concepts for managing the monument. Each concept has a slightly different approach to cultural and natural resource management, facilities, and visitor opportunities in the monument. The planning team developed these concepts based on the monument's purpose and significance, issues facing the monument, our legal mandates, and comments that you provided during the scoping period.

None of the concepts envision a significantly different future for Lava Beds. Instead, we are looking to build on the successful implementation of our last GMP, which focused on the improvement of park facilities and infrastructure, including the construction of a new Visitor Center and a Research Center. No major new facilities are proposed in the management concepts presented in this newsletter. We are primarily looking at ways of expanding and improving our level of service through new interpretive features, better access to monument sites and features, ensuring protection of sensitive resources, new educational opportunities and/or programs, improved resource management, and new partnership opportunities with neighboring land management agencies, tribes and communities. Obviously we can't accomplish everything presented in these management concepts. We are looking to you to help us determine which ideas are preferred for Lava Beds.

We would like your comments and suggestions on the preliminary management concepts presented in this newsletter. You may like some but not all of the elements described here, or you may like a particular concept but disagree with the actions that may be taken to translate that concept into actual visitor experiences or resource protection. You may also have an entirely different vision of how the monument should be managed. We'd like to hear from you. Your comments will help the National Park Service formulate the best possible future for the monument.

We have included a mail-in form for your comments. You may also send in comments over the internet at: <http://parkplanning.nps.gov/labe> or join us at a public meeting in Klamath Falls on January 29th to discuss and comment on these preliminary concepts.

Based on your comments, the planning team will reevaluate the proposed concepts, modify them as necessary, and develop a preferred alternative. Our preferred alternative may be one of the concepts in this newsletter, it may include elements from



Above: Blue Grotto Cave  
Below: Visitor Center

several of the concepts, or it may be an entirely new concept. The management concepts and an analysis of the impacts of implementing each concept will be presented in a Draft General Management Plan in late 2008.

I sincerely value your input regarding the future management of Lava Beds National Monument, and thank you in advance for your participation. Public communication, collaboration, and cooperation are essential to developing a successful general management plan. Please feel free to contact me if you have any questions.

Sincerely,

Dave Kruse  
Superintendent

## You're invited

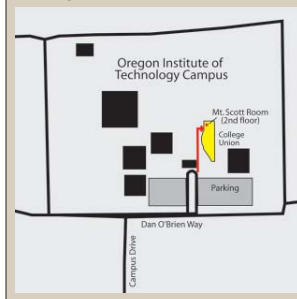
The monument will be hosting a public meeting on Tuesday, January 29, 2008 from 6:00 - 8:00 p.m. at the Oregon Institute of Technology in Klamath Falls, Oregon. The meeting will take place in the College Union Building (2nd Floor, Mt. Scott Room). You will have an opportunity to provide your input on the preliminary management concepts presented in this newsletter and to share any additional ideas or comments with the planning team.

### Oregon Institute of Technology

**Location:** 3201 Campus Dr.  
Klamath Falls, OR 97601-8801



### Meeting Room Location



## What's Inside...

### Development of Preliminary Management Concepts, p. 2

The GMP planning team developed four preliminary management concepts for managing Lava Beds.

### Draft Management Concepts, pp. 3-6

Draft concept highlights and management zoning maps.

### Overview of Desired Conditions for the Preliminary Management Concepts, p. 7

Comparison of the desired conditions for each draft management concept.

### How to Participate, p. 8

How to comment on the draft management concepts and other opportunities to participate. Also see public meeting invitation above and the enclosed comment form.

## Foundation Statement Summary

### Lava Beds National Monument's Park Purpose:

Lava Beds National Monument protects and interprets volcanic and natural features of scientific interest, and evidence of prehistoric and historic human settlement, use, and conflict.

### Lava Beds National Monument is nationally significant because:

Lava Beds National Monument protects and interprets one of the largest concentrations of lava tube caves in the continental U.S., along with unique environments and cave-dependent species.

Lava Beds National Monument protects and interprets objects, sites, and the rugged volcanic setting associated with the 1872-73 Modoc War.

Lava Beds National Monument contains archeological evidence of human occupation extending back to the Holocene (11,000 years to present), exceptional rock art consisting of regionally-distinctive petroglyphs and pictographs, and a setting of continued significance to Modoc people as a part of their traditional homeland.

Lava Beds National Monument protects and interprets outstanding, diverse, abundant, and well preserved lava flows, cinder cones, spatter cones, Maar volcanoes, and other volcanic features associated with the Medicine Lake shield volcano.

Lava Beds National Monument provides a wilderness experience in the unique volcanic Great Basin landscape of the Great Basin and Cascade ecosystems.

Lava Beds National Monument protects and manages native plant and animal species and processes representative of the transition zone for Great Basin and Cascade ecosystems.

### Other Important Resources and Values

Lava Bed National Monument contains sites and resources associated with homesteading and ranching, early cave exploration and use, the Civilian Conservation Corps and war on the home front.

## GMP Goals

Through our scoping process we identified several major areas that will be addressed in the preliminary management concepts for Lava Beds National Monument.

- Preserving the undeveloped character of Lava Beds National Monument
- Providing a more diverse range of recreational, educational and interpretive opportunities
- Providing a high-level of protection for sensitive natural and cultural resources
- Maintaining adequate visitor services given the monument's remote location
- Preserving opportunities for visitors to explore caves on their own
- Providing greater protection of sensitive resources at Petroglyph Point
- Increasing partnerships and interactions with schools, tribes, and surrounding agencies
- Improving campground facilities for recreational vehicle (RV) and/or group camping

# Development of Preliminary Management Concepts: Exploring Options

Both the National Environmental Policy Act and the National Park Service planning process require the NPS to examine a variety of approaches for managing Lava Beds National Monument in a general management plan. This process allows managers, park visitors, partners and interested community members to work together in exploring various approaches for future management.

The management concepts presented in this newsletter were developed to explore different options for the future. None of the options represent a dramatically different future for Lava Beds. Instead, these management concepts offer new ways to improve on what we have in place today. Examples include ideas for new trails, new education programs, expanded outreach and regional coordination, and improvements at the Petroglyph Point unit. No major new facilities or development projects are proposed in the preliminary management concepts.

All of the preliminary management concepts must be consistent with the purposes for which the monument was established (see Foundation Statement Summary). The management concepts must be reasonable, and must be consistent with other special mandates and laws (e.g. the Endangered Species Act or the National Historic Preservation Act).



Once we have received your input, we will evaluate the various ideas presented in the management concepts and select a preferred alternative. This preferred alternative may be one of the management concepts presented in this newsletter, or it may be a new concept comprised of ideas from several of the management concepts presented. Please let us know which ideas you think are best for Lava Beds. Feel free to suggest new ideas not presented in this newsletter.

The National Park Service will identify a preferred alternative after we have analyzed your comments on the concepts and after initial environmental impact analysis of the management concepts has been completed.

## The Preliminary Management Concepts

During the summer of 2007, the GMP planning team developed four preliminary management concepts for managing Lava Beds. These concepts represent different approaches to address specific goals (see text box: GMP Goals) identified by park staff, park visitors and other interested parties.

Each preliminary management concept presented on the next few pages begins with a concept statement followed by concept highlights, management zones, and future desired conditions. A **concept statement** generally describes the guiding philosophy or overall direction for each concept. The **concept highlights** provide general description of the management directions and actions that would be taken for each concept. **Management zones** (shown on the maps) identify how different areas of the monument could be managed to achieve a variety of resource conditions and visitor experiences. Each zone specifies a particular combination of resource conditions, visitor experiences/activities, and appropriate development. On page 7 there is a more detailed table that compares the **desired conditions**, or specific ideas and actions, for each management concept.

While you read the management concepts, keep in mind that these are just initial ideas. At this stage there may be some gaps and inconsistencies and some ideas might not be fully developed. With your input, the planning team will continue to refine these concepts. Unless otherwise stated, all existing uses and visitor and administrative facilities would continue in the monument under all of the concepts.

Also keep in mind that management concepts are conceptual in nature. The general management plan establishes a vision of the future that will guide year-to-year management of the monument; full implementation could take many years.

### Common Threads for the Management Concepts

With the exception of Management Concept A: Continuation of Current Management, the following actions would hold true for all of the concepts:

- The monument would conduct a conservation assessment of Petroglyph Point to determine the best protection measures for the petroglyphs and appropriate locations for visitor services.
- The Petroglyph Point land transfer included in the 1996 General Management Plan is in progress.
- The National Park Service would develop a Long Range Interpretive Plan to implement recommended interpretive programs and services at Lava Beds National Monument.
- No new large-scale facilities would be proposed. Improved utilization of existing facilities would be emphasized wherever possible.
- Additional opportunities for research and education would be available at the Research Center.
- Sensitive caves (such as Fern Cave and Crystal Ice Cave) would be operated in a manner that preserves the resources while providing for visitor use.
- Lava Beds would explore more opportunities to accommodate large groups at visitor use areas.
- Interpretive materials would be provided in multiple languages.
- The National Park Service would continue to provide limited support services for the Tule Lake Segregation Center National Historic Landmark through its current management agreements with the Bureau of Reclamation and the California Department of Transportation.



Schonchin Butte Fire Lookout



# Management Concept A: Continuation of Current Management

Management Concept A provides a baseline for evaluating changes and impacts in other concepts. Under this management concept the National Park Service would continue to manage Lava Beds National Monument as it has been managed since the approval of the 1996 General Management Plan.

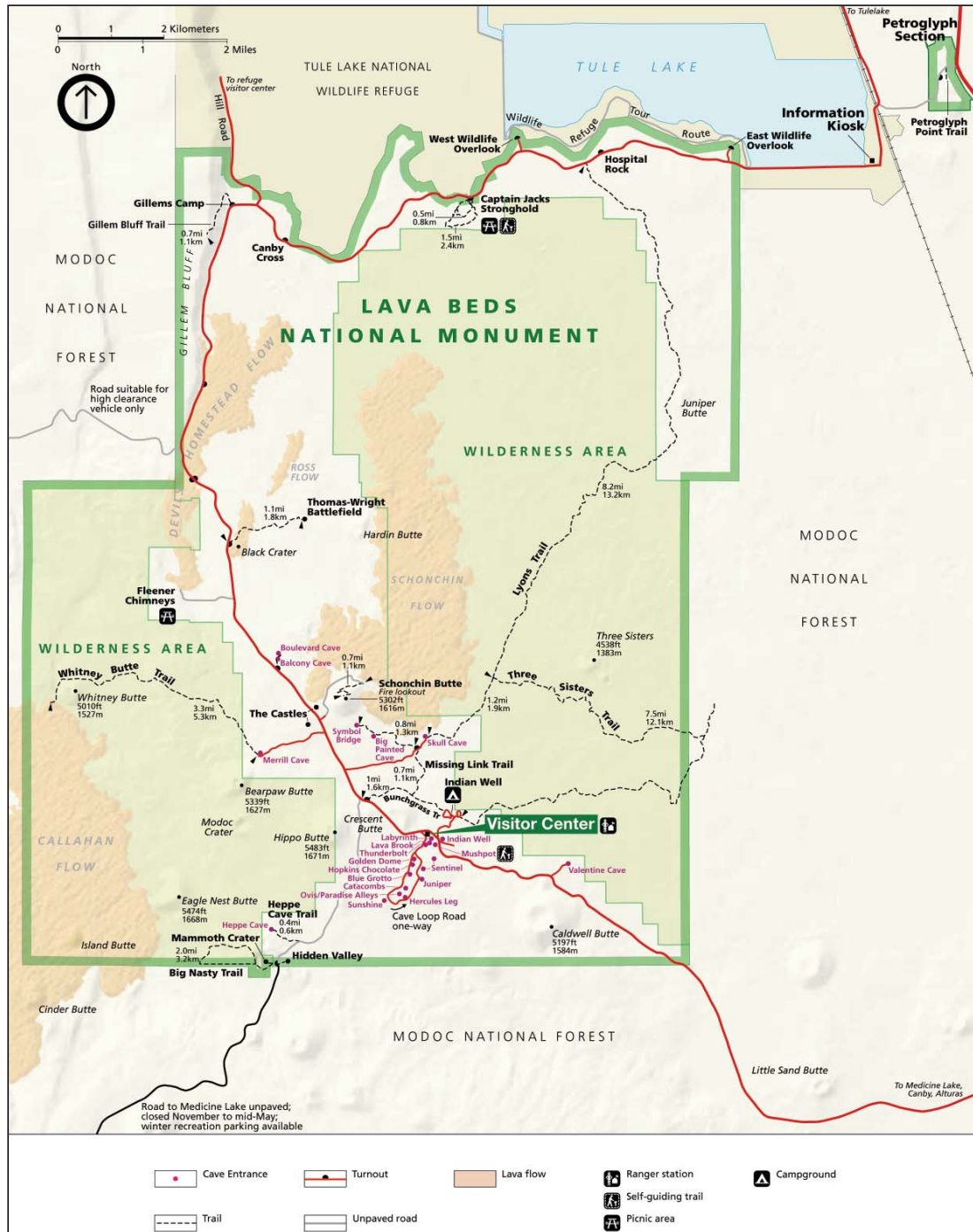
## Concept Highlights:

- Current management trends and ongoing projects would continue.
- Existing facilities and trails would remain and continue to be maintained.
- Current resource management and visitor service levels would continue.
- Limited education programs would be provided.
- The park would maintain the existing wilderness boundary.



Above: Current Conditions at Petroglyph Point  
Below: Visitors on the Cave Loop

## Existing Facilities and Conditions



# Management Concept B: Expanded Resource Preservation and Restoration

*In concept B, the National Park Service would enhance and expand existing natural and cultural resource preservation and management. This would be achieved through landscape restoration, research, and interagency cooperation. The monument would feature visitor services and programs that emphasize wilderness experiences.*

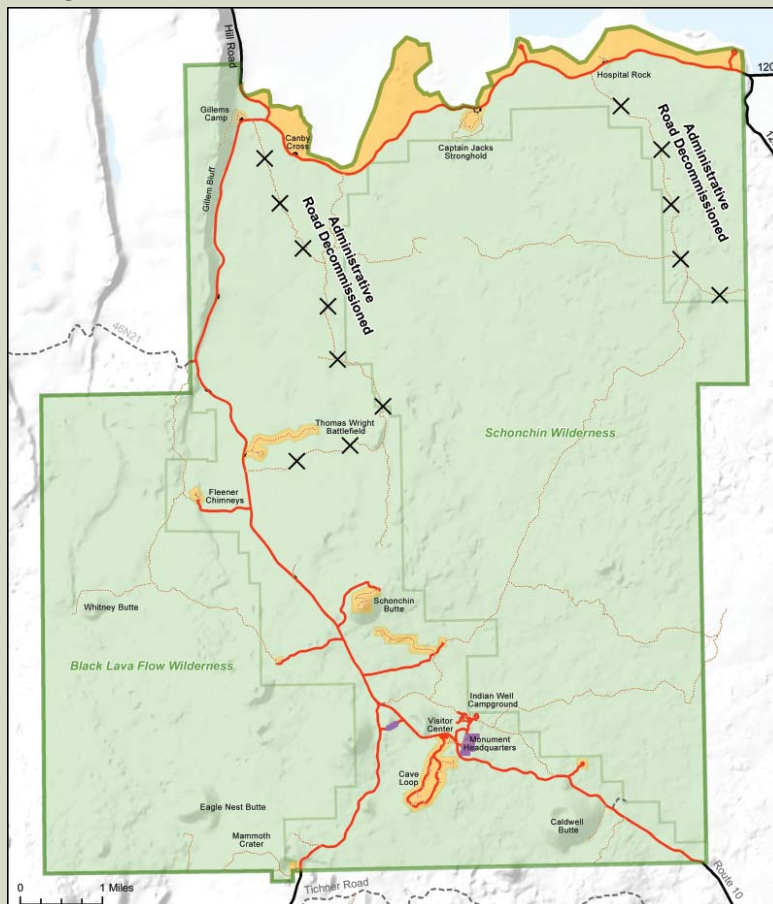
## Concept Highlights:

- Increased emphasis would be placed on restoration of the landscape to its Pre-European ecological setting and providing additional habitat for threatened and endangered species.
- The monument would provide a world-class cave experience and develop a leadership role in the management of lava tube systems by assisting other parks and agencies in cave management, restoration and monitoring.
- The monument would consider expansion of designated wilderness areas.
- Natural recovery processes would reclaim some administrative roads. These roads would be converted to trails.
- The intrusion of facilities and infrastructure on views would be minimized. The monument would partner with local communities to protect views and dark night skies.
- Greater documentation would be completed for cultural resources and collections. Additional research on archeological sites would be conducted.
- The monument would consider additional nominations to the National Register of Historic Places.
- New trails and visitor programs would emphasize wilderness experiences.
- The National Park Service would work closely with surrounding agencies, tribes and other partners to enhance natural and cultural values.



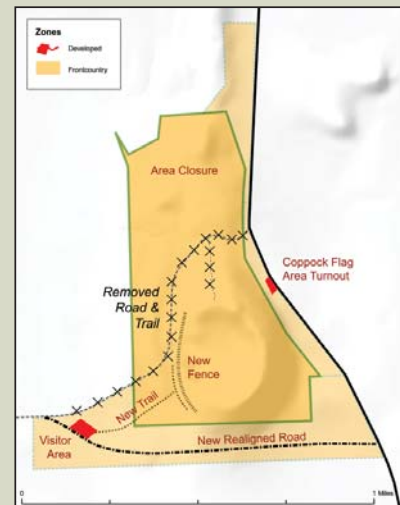
Above: View from Gillem Bluff  
Below: Crystal Ice Cave

## Management Zones



## Petroglyph Point Unit

- A small visitor use area would be created at Petroglyph Point that would allow visitors to experience the petroglyphs while providing maximum protection of sensitive sites. The road through Petroglyph Point would be realigned to the south end of the site.



Backcountry Zone	Frontcountry Zone	Developed Zone	Administrative Zone	
This zone would emphasize the preservation of natural and cultural resources and offer outstanding opportunities for solitude and primitive recreation. Recreational opportunities would be primarily unstructured, with many opportunities for adventure. This zone includes legislated wilderness areas and other areas managed as wilderness.	Areas would be predominately natural, but the sights and sounds of people would be evident. Resources could be modified for essential visitor needs such as trails and interpretive media and park operation needs in a way that harmonizes with the natural and cultural environment.	Developed visitor use areas that provide for high density use and support services. Education and interpretive facilities and services, and concentrated visitor use would be accommodated. This zone would serve as a primary entry into other zones.	Concentrated area of development that would generally be closed to the public. Comprised of facilities that directly contribute to the day-to-day operations of the monument.	<div>— Paved Road</div> <div>- - - Unpaved Road</div> <div>..... Trail</div>



# Management Concept C: Diversified Recreation Opportunities

Through an expanded range of visitor programs and recreation opportunities, the National Park Service would strive to meet both current and changing visitor needs. Expanded outreach efforts would develop a more visible identity for the monument. These actions would enhance appreciation for the unique resources protected at Lava Beds and improve understanding of the monument's role in its regional setting.

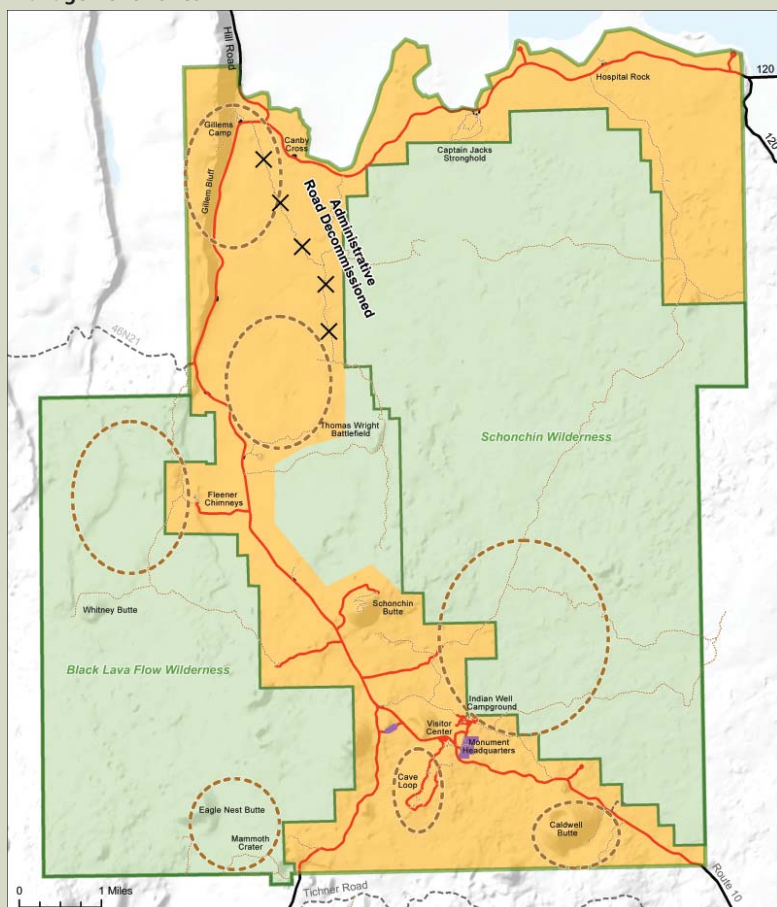
## Concept Highlights:

- Lava Beds would create additional recreation and/or interpretive trails and explore connections to national forest trails and sites.
- New recreational opportunities and experiences would be provided (e.g. annual events, adventure tours, winter activities, biking, and caving seminars).
- Lava Beds would actively restore the Modoc War landscape. New research and battle forensics would enhance interpretation and knowledge of the Modoc War sites.
- Visitors would have more access to cultural features and collections. In sensitive areas, access would be guided.
- The campground would be improved to better accommodate groups and RVs.
- Management of sensitive resources would remain consistent with current management. However, the National Park Service would conduct additional monitoring and evaluate impacts to resources in high visitor use areas.
- The park would maintain the existing wilderness boundary.



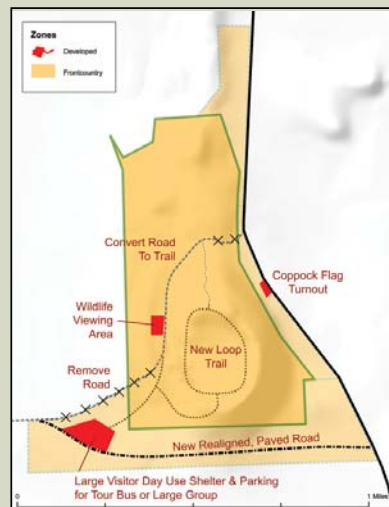
Above: Captain Jacks Stronghold  
Below: Modoc War Reenactors

## Management Zones



## Petroglyph Point Unit

- A limited day-use facility and additional recreational opportunities such as wildlife viewing would be available at Petroglyph Point. The road through the Petroglyph Point unit would be realigned to the south and paved.



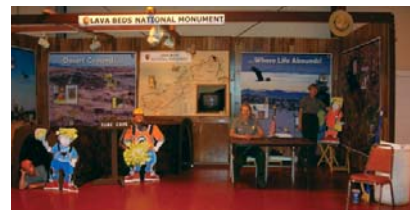
Backcountry Zone	Frontcountry Zone	Developed Zone	Administrative Zone	
This zone would emphasize the preservation of natural and cultural resources and offer outstanding opportunities for solitude and primitive recreation. Recreational opportunities would be primarily unstructured, with many opportunities for adventure. This zone includes legislated wilderness areas and other areas managed as wilderness.	Areas would be predominately natural, but the sights and sounds of people would be evident. Resources could be modified for essential visitor needs such as trails and interpretive media and park operation needs in a way that harmonizes with the natural and cultural environment.	Developed visitor use areas that provide for high density use and support services. Education and interpretive facilities and services, and concentrated visitor use would be accommodated. This zone would serve as a primary entry into other zones.	Concentrated area of development that would generally be closed to the public. Comprised of facilities that directly contribute to the day-to-day operations of the monument.	<div>— Paved Road</div> <div>- - - Unpaved Road</div> <div>..... Trail</div> <div>..... Potential Day Use Area (Could include new interpretive features, picnic areas, new trail opportunities)</div>

# Management Concept D: Education and Interpretation

Under this concept, Lava Beds National Monument would be viewed as a destination for education and learning. The National Park Service would provide increased educational opportunities and in-depth experiences for visitors. Partnerships with the U.S. Forest Service, the U.S. Fish and Wildlife Service, affiliated tribes, and educational institutions would provide interpretation and more consistent management of sites and features outside of Lava Beds that are related to the park purpose.

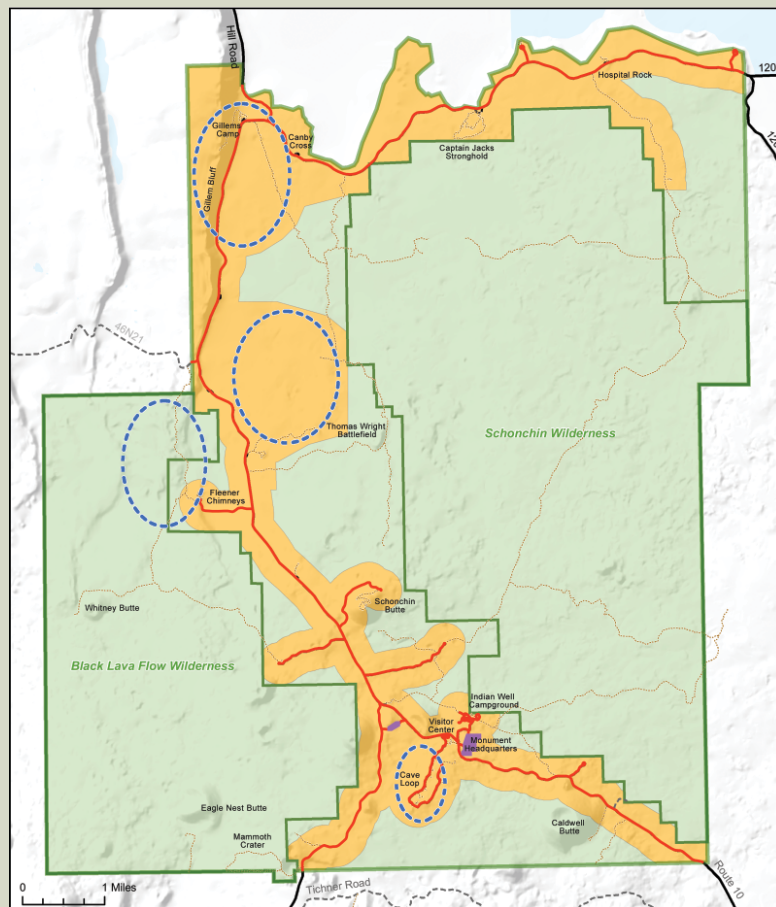
## Concept Highlights:

- Lava Beds would strengthen partnerships with communities, agencies, tribes and schools to interpret sites related to park purpose (both within and outside of the monument).
- The Research Center would be better utilized for research and educational programming (e.g. opportunities for visitors to participate in research and restoration activities, school groups, educational workshops, cultural research opportunities, and tribal use for education).
- New opportunities would be provided for visitors to learn about astronomy, homesteading, the Civilian Conservation Corps era, and wildlife.
- Additional educational/ interpretive trails would be provided in key areas of the monument.
- Increased interpretation and education of the caves would be provided on the cave loop. Additional guided tours would be provided by rangers or cave docents.
- More monument collections would be made available to visitors and researchers (e.g. more exhibits, a collection for hands-on educational use, virtual museum, etc.)
- Lava Beds would develop more formalized relationships with schools.



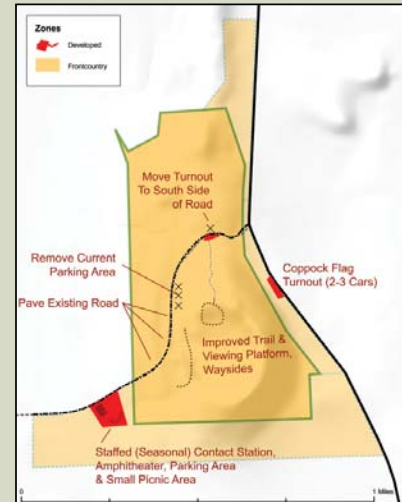
Above: Lava Beds booth at the Tulelake Butte Valley Fair  
Below: Mountain Men Reenactors

## Management Zones



## Petroglyph Point Unit

- A visitor contact station and day-use facilities would be located at Petroglyph Point. The existing road through the Petroglyph Point unit would be paved.



Backcountry Zone	Frontcountry Zone	Developed Zone	Administrative Zone	
This zone would emphasize the preservation of natural and cultural resources and offer outstanding opportunities for solitude and primitive recreation. Recreational opportunities would be primarily unstructured, with many opportunities for adventure. This zone includes legislated wilderness areas and other areas managed as wilderness.	Areas would be predominately natural, but the sights and sounds of people would be evident. Resources could be modified for essential visitor needs such as trails and interpretive media and park operation needs in a way that harmonizes with the natural and cultural environment.	Developed visitor use areas that provide for high density use and support services. Education and interpretive facilities and services, and concentrated visitor use would be accommodated. This zone would serve as a primary entry into other zones.	Concentrated area of development that would generally be closed to the public. Comprised of facilities that directly contribute to the day-to-day operations of the monument.	<div>— Paved Road</div> <div>- - - Unpaved Road</div> <div>..... Trail</div> <div>..... Potential Area for Expanded Interpretation</div>



# Preliminary Management Concepts - Overview of Desired Conditions

	<b>A: Continue Current Management</b> <i>Provides a baseline for evaluating changes and impacts in other concepts.</i>	<b>B: Expanded Resource Preservation and Restoration</b> <i>Enhances and expands existing natural and cultural resource values, preservation and management through landscape restoration, research, and interagency cooperation. Features visitor services and programs that emphasize wilderness experiences.</i>	<b>C: Diversified Recreation Opportunities</b> <i>Through an expanded range of visitor programs and recreation opportunities, the National Park Service would strive to meet both current and changing visitor needs. Expanded outreach efforts would develop a more visible identity for the monument.</i>	<b>D: Education and Interpretation</b> <i>Lava Beds National Monument would be viewed as a destination for education and learning. Provides increased educational opportunities and in-depth experiences for visitors both within and outside of the monument boundaries.</i>
<b>Natural Resources</b>	Current management would continue.	Emphasis would be placed on restoring the ecological setting to Pre-European conditions.  Threatened and endangered species such as the sage grouse would be introduced. Habitat for bat species would be improved.  Lava Beds would be a leader in the management of lava tube cave systems.  Wilderness caves would receive a higher level of management through monitoring, restoration, cave permits, and management plans.	Cave action plans would be developed for caves that may receive increased use.  The NPS would conduct additional monitoring and assessment of sensitive resources in high visitor use areas.	NPS resource professionals would play a more active role in interpretation and education programs.  The NPS would conduct additional monitoring and assessment of sensitive resources in high visitor use areas.
<b>Cultural Resources</b>	Current management would continue.	Greater research emphasis and assessment of archeological sites would occur.  Collections storage facilities would be improved.  The NPS would consider additional nominations to the National Register of Historic Places.  The NPS would compile baseline information on ethnographic resources.  The NPS would develop accurate documentation for all known historic properties, collections, and cultural landscapes (common to all concepts).	The Modoc War historic landscape is actively restored. Controlled visitor access to additional sites would be explored.  New research and battle forensics would enhance knowledge of the Modoc War sites.  Visitors would have greater access and new ways to view monument collections (e.g. electronic museum tours, new/rotating displays).  The monument would identify new ways to provide visitors with access to historic structures.	Use of the Research Center for cultural resource research and workshops would occur.  The NPS would collect oral histories related to the Tule Lake Segregation Center, tribes, Civilian Conservation Corps crews.  New research and battle forensics would enhance knowledge of the Modoc War sites.  Visitors would have greater access and new ways to view monument collections. (e.g. electronic museum tours, new/rotating displays).
<b>Wilderness</b>	Would maintain current wilderness.	Evaluate potential wilderness expansion.  Greater emphasis would be placed on preserving dark night skies and monument views.  New opportunities to experience wilderness areas would be provided.	Would maintain current wilderness.	Would maintain current wilderness.
<b>Interpretation/ Education</b>	Current resource management and visitor service levels would continue.  Limited education programs would be provided.	Interpretation and education would be focused on wilderness education and safety.  Opportunities would be provided for public involvement in research and restoration activities.  New technologies would connect visitors to sensitive resources (e.g. bat cameras in caves).  Use of the Research Center would be expanded to include educational activities.	Interpretive information would be provided through new recreation opportunities.  Interpretive media would be created for groups and tours.  Additional interpretation of Civilian Conservation Corps-era monument features.  Public archeology programs and archeology workshops would be held at the monument.  Research Center use would be expanded to include recreation seminars (caving, winter activities).  The NPS would collaborate with the USFWS on guided tours along Tule Lake.	More in-depth visitor education opportunities would be provided (such as guided tours, workshops, educational programs) throughout the monument and in related sites throughout the region.  New interpretive opportunities would be provided (e.g., astronomy, homesteading, Civilian Conservation Corps era, wildlife viewing).  Lava Beds would develop more formalized relationships with schools and universities.  Visitors and youth would have opportunities participate in restoration activities.  Research Center use would be expanded for researchers, schools and public workshops.
<b>Visitor Experience</b>	Current resource management and visitor service levels would continue.  Limited education programs would be provided.	Additional visitor opportunities would be focused on the wilderness experience.  Reliance on automobiles to experience visitor areas would be reduced.  Guided backcountry hikes are provided.	Diversified recreational opportunities are provided throughout the monument (e.g. biking, snowshoeing, caving seminars, annual events, adventure and other specialized tours).  More information and resources for recreational users would be provided at the visitor center.	Visitor experience is focused on learning and education for a diversity of monument visitors.  Would provide an ADA accessible opportunity to experience a cave.  The NPS would provide a broader variety of adventure and specialized tours.
<b>Roads, Trails and Trailheads</b>	Maintain existing designated trails, trailheads, parking areas and roads.	The monument would explore additional trail opportunities in wilderness areas.  Create better trail/pedestrian connections between visitor areas.  Natural processes would reclaim some administrative roads/trails.  Gravel roads would be paved to reduce dust and particulates.	The monument would establish additional loop trails, zone-specific interpretive trails (e.g. geology, nature), and new connections to national forest trails  The monument would provide more accessible trails to primitive areas.  Diversified recreation trails would be provided (e.g. bike, horse, and cross-country skiing). Paved road shoulders would be striped for bicycle use.	The monument would establish zone-specific interpretative trails (e.g. geology, nature).
<b>Facilities (main park unit)</b>	Existing facilities would remain and continue to be maintained.	The intrusion of facilities and infrastructure on outstanding monument views and natural and cultural features would be minimized.  The monument would explore opportunities to co-locate some monument staff with other agencies outside of the monument.	The monument would designate day-use areas that would accommodate large groups.  Primitive camping sites would be available.  The campground would be improved to better accommodate groups and large vehicles (no net loss or gain in total number of sites).	The monument would designate day-use areas that would accommodate large groups.
<b>Boundary Adjustments</b>	Current boundary would be maintained.	Current boundary would be maintained. Coordination and cooperation with surrounding agencies to protect resources related to park purpose and significance.	Current boundary would be maintained.	Current boundary would be maintained.
<b>Partnerships/ Regional Cooperation</b>	Cooperative agreement for Tule Lake Segregation Center (common to all)  Continue current collaboration with tribes, communities, partners and agencies.	Lava Beds would initiate increased interagency cooperation for resource protection.  Increased tribal involvement would be emphasized (e.g. NPS employment, concessions, and interpretation and education programs).  Partners would have greater role in research and monitoring.  The monument would develop stronger connections to university researchers.	The NPS would collaborate with the USFS on new recreational opportunities (e.g. trail connections, joint management of trails for horses, bikes, equestrians and winter sports such as cross-country skiing and snowshoeing).  The NPS would expand outreach to the travel and tourism industry to raise the profile of Lava Beds.	Partnerships/agreements with affiliated tribes, surrounding agencies and gateway communities to provide educational and interpretive opportunities for sites outside the monument that are related to park purpose and significance.  The monument would work closely with gateway communities on signage, interpretation.  Tribes would increasingly use the monument for educational programs.
<b>Petroglyph Point Unit</b>	Current management continues.  Existing facilities would be maintained.	A small day-use area with parking, trails, picnic area, and shade structures would be provided.  The monument would provide a surfaced accessible trail to petroglyphs.  The Petroglyph Point road would be realigned to the south.	A group day-use area with parking, trails, picnic area, and shade structures would be provided.  Additional trail opportunities are provided.  The Petroglyph Point road would be realigned to the south and paved.	A seasonal ranger contact station, outdoor education area, and large group day-use facilities would be provided.  The NPS would interpret geology, wildlife, vegetation, astronomy, homesteading.  The Petroglyph Point road would be paved.
<b>Cave Loop</b>	Current management continues.	The cave loop road would be closed at night.  Occasional administrative closures may be enforced at times to protect cave resources.  More rangers would be present at the cave loop during peak visitation.	A formal trail system would be established in the cave loop area. Areas along the cave loop impacted by social trails would be restored.  More rangers would be present at the cave loop during peak visitation.  A cave docent program would be established.	The monument would provide more in-depth information and educational materials about caves.  More ranger guided cave tours would be provided and more rangers would be present at during peak visitation.  A cave docent program would be established.



National Park Service  
U.S. Department of the Interior

General Management Plan Team  
Lava Beds National Monument  
1 Indian Well  
Headquarters  
Tulelake, CA 96134



EXPERIENCE YOUR AMERICA™

## Lava Beds General Management Plan Newsletter 3: Preliminary Management Concepts

### What's Inside:

Enclosed for your review are preliminary management concepts developed for the Lava Beds National Monument General Management.

### Contents:

Letter from the Superintendent p. 1  
Development of Preliminary Management Concepts p. 2  
Draft Management Concepts pp. 3-6  
Desired Conditions p. 7  
How to Participate p. 8

### Contact Information

#### Mail:

General Management Plan Team  
Lava Beds National Monument  
1 Indian Well  
Headquarters  
Tulelake, CA 96134

#### Phone:

Park phone numbers:  
(530) 667-8114 / (530) 667-8104  
GMP Project Manager: Barbara Butler  
(510) 817-1322

#### Park Web Site:

<http://www.nps.gov/labe>

#### GMP Planning Web Site:

<http://parkplanning.nps.gov/labe>

### We would like to hear from you! How to participate:

The planning team welcomes your comments anytime in the planning process. Right now, we would like to hear your ideas and comments with respect to the preliminary management concepts and zones presented in this newsletter. Please comment through any one of the following methods:

- Fill out the enclosed **comment form** and drop it in the mail
- Attend the **public workshop on January 29, 2008** at the Oregon Institute of Technology in Klamath Falls, Oregon (see p. 1)
- Fill out an **electronic comment form** at <http://parkplanning.nps.gov> (select Lava Beds National Monument in the drop down box; then link to Lava Beds National Monument General Management Plan)
- Mail comments to the General Management Plan Team, Lava Beds National Monument, 1 Indian Well, Headquarters, Tulelake, CA 96134

Please send your comments by **February 28, 2008**.

### Future Opportunities for your Participation

	Planning Activity	Dates	Public Involvement Opportunities
1	<b>Scoping</b> - Set the stage for planning: Reaffirm purpose, significance, and identify ideas, concerns or issues to be addressed in the GMP. Summarize scoping comments and report back.	Spring 2006 to Spring 2007	Review newsletter and send us your ideas or concerns on the comment form provided or through our planning website. Attend public meetings and voice your ideas and concerns.
2	<b>Develop and present preliminary alternatives:</b> Outline different possible futures for the park and provide opportunities for review and comment by the public, agencies, tribes and other park stakeholders.  *****WE ARE HERE*****	Summer 2007 to Winter 2008	Review preliminary management concepts newsletter and send us your ideas and comments. Attend workshop to comment on preliminary management concepts.
3	<b>Prepare and distribute a Draft General Management Plan / Environmental Document:</b> for review and comment by the public, agencies, tribes and other park stakeholders.	Spring to Fall 2008	Review the Draft GMP and provide written comments. Attend public meetings to learn more about the draft document and to voice your ideas and concerns.
4	<b>Revise draft and publish Final General Management Plan / Environmental Document:</b> Analyze comments, respond to comments, revise draft document, distribute to the public.	Spring 2009	Review the Final GMP.