

Area of Potential Effects on Historic Properties

George Washington Memorial Parkway
Washington, D.C.

Area of Potential Effects on Historic Properties | Triumphal Arch Site National Register Historic Properties

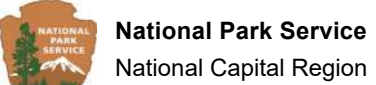
- Sources**
1. ESRI World Imagery Basemap
 2. NCR Cultural Resources GIS

- LEGEND**
- Area of Potential Effects
 - Direct Effects Boundary
 - Project Area
 - Construction Staging Area
 - Potential Utility Corridors

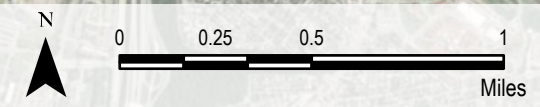
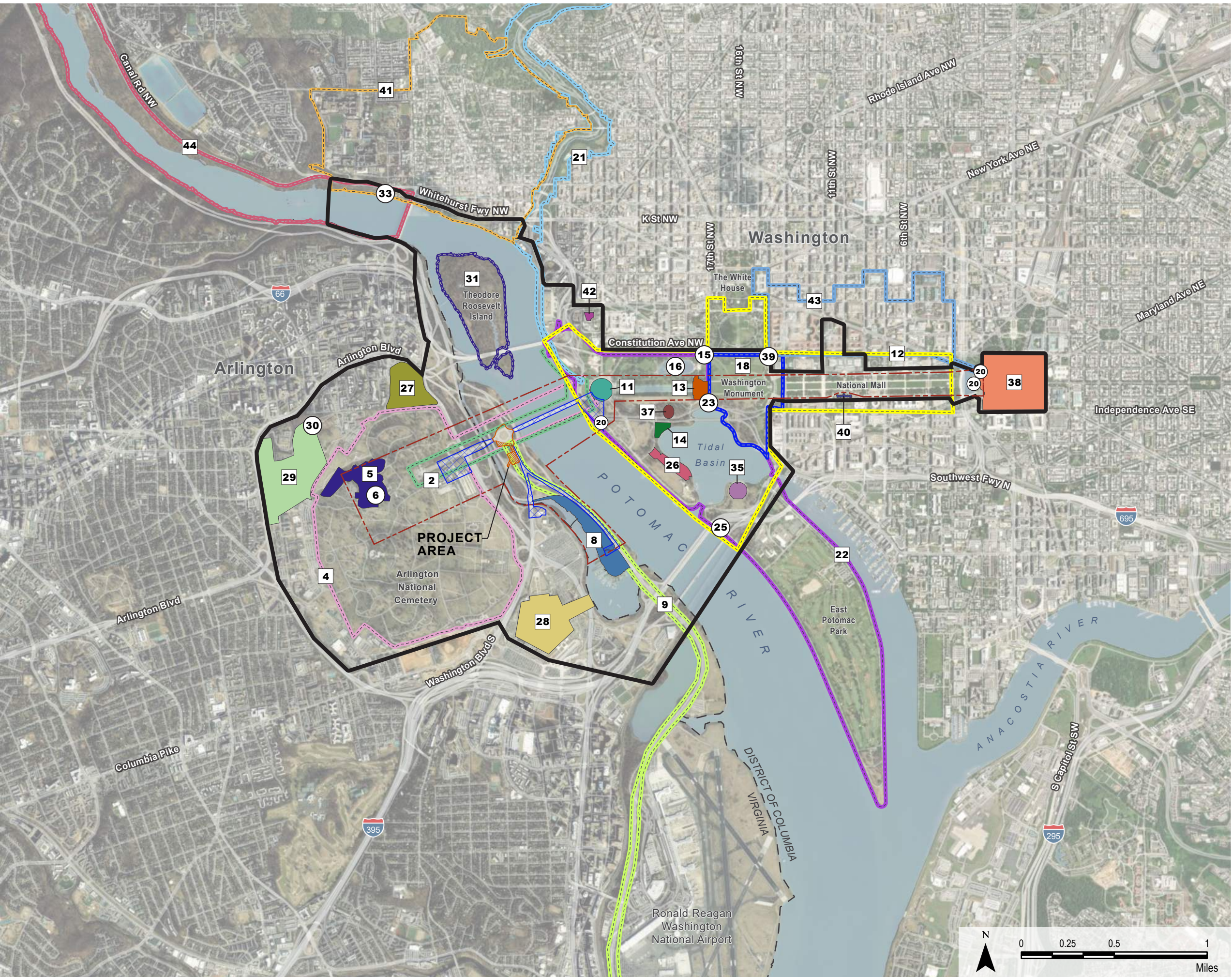
- Individual Structures**
- 6 Arlington House (Robert E. Lee Memorial)
 - 15 Lockkeeper's House, C & O Canal Extension
 - 16 56 Signers Memorial
 - 20 Civil War Monuments in Washington, D.C. (Adjacent Lands)
 - 23 American Revolutionary Statuary in the District of Columbia
 - 25 Cuban Friendship Urn
 - 30 Quarters 1 (NHL- Adjacent Lands)
 - 33 Washington Canoe Club
 - 39 U.S. Capitol Gatehouses and Gateposts

- District Boundaries**
- 2 Arlington Memorial Bridge and Related Features
 - 4 Arlington National Cemetery Historic District
 - 5 Arlington House Historic District (also known as Robert E. Lee Historic District)
 - 8 Lyndon Baines Johnson Memorial Grove on the Potomac
 - 9 Mount Vernon Memorial Highway
 - 11 Lincoln Memorial
 - 12 National Mall
 - 13 World War II Memorial
 - 14 Martin Luther King Jr. Memorial
 - 18 Washington Monument and Grounds Historic District
 - 21 Rock Creek Park and Potomac Parkway Historic District
 - 22 East and West Potomac Parks Historic District
 - 26 Franklin Delano Roosevelt Memorial
 - 27 Arlington Ridge Park
 - 28 Pentagon (NHL- Adjacent Lands)
 - 29 Fort Myer Historic District (NHL- Adjacent Lands)
 - 31 Theodore Roosevelt Island
 - 35 Thomas Jefferson Memorial
 - 37 DC War Memorial
 - 38 United States Capitol (NHL- Adjacent Lands)
 - 40 Smithsonian Building (NHL- Adjacent Lands)
 - 41 Georgetown Historic District (NHL- NPS and Adjacent Lands)
 - 42 Old Naval Observatory (NHL- Adjacent Lands)
 - 43 Pennsylvania Avenue National Historic Site

- Notes**
1. Projection: NAD 1983
 2. PRELIMINARY (2026)



Drawing #1



Area of Potential Effects on Historic Properties

George Washington Memorial Parkway
Washington, D.C.

Area of Potential Effects on Historic Properties | Triumphal Arch Site National Register Historic Properties

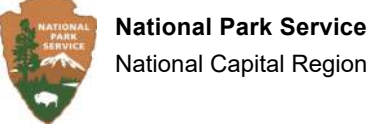
- Sources**
- ESRI World Imagery Basemap
 - NCR Cultural Resources GIS

- Legend**
- Area of Potential Effects
 - Direct Effects Boundary
 - Project Area
 - Construction Staging Area
 - Potential Utility Corridors

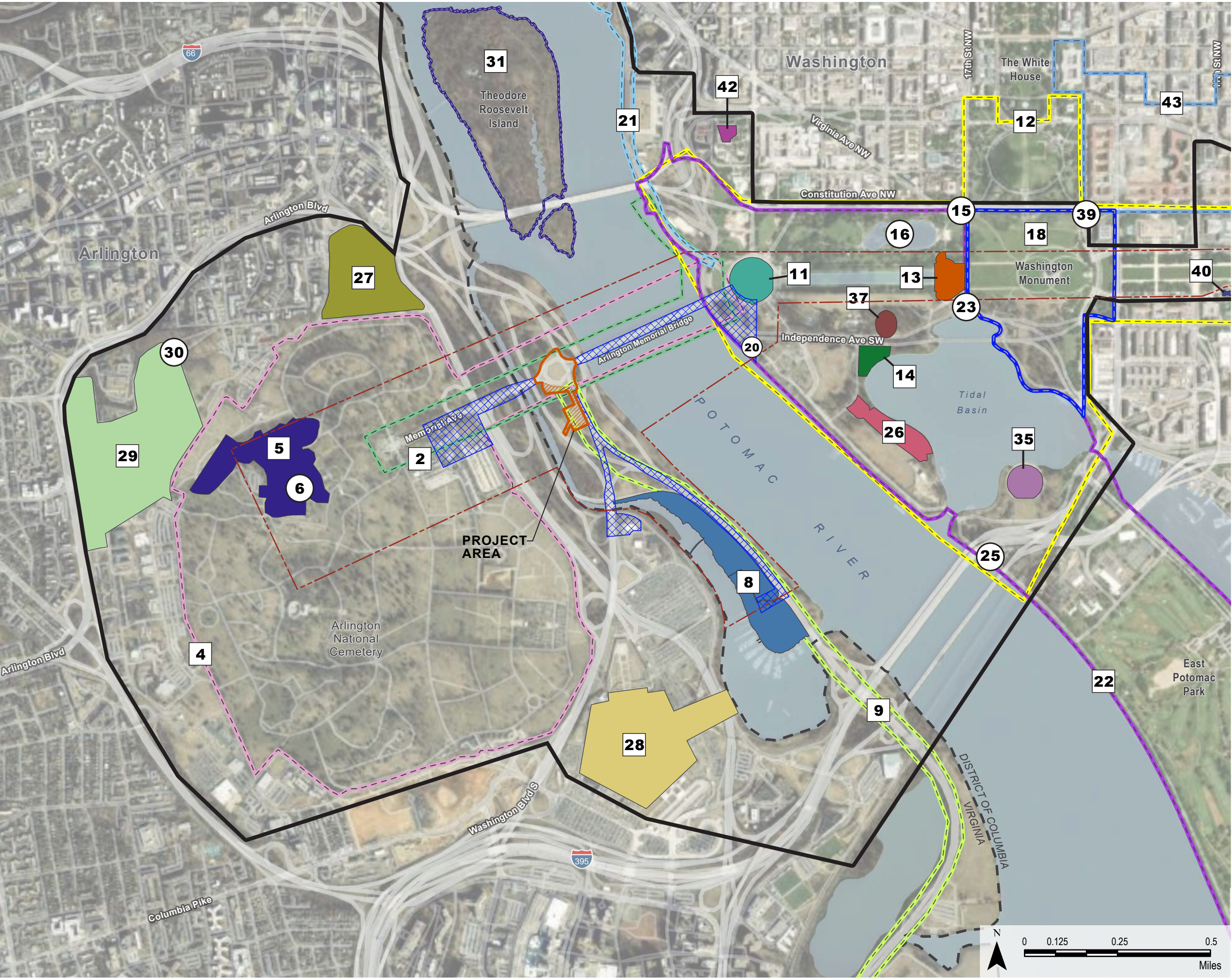
- Individual Structures**
- 6 Arlington House
 - 15 Lockkeeper's House, C & O Canal Extension
 - 16 56 Signers Memorial
 - 20 Civil War Monuments in Washington, D.C. (Adjacent Lands)
 - 23 American Revolutionary Statuary in the District of Columbia
 - 25 Cuban Friendship Urn
 - 30 Quarters 1 (NHL- Adjacent Lands)
 - 39 U.S. Capitol Gatehouses and Gateposts

- District Boundaries**
- 2 Arlington Memorial Bridge and Related Features
 - 4 Arlington National Cemetery Historic District
 - 5 Arlington House Historic District (also known as Robert E. Lee Historic District)
 - 8 Lyndon Baines Johnson Memorial Grove on the Potomac
 - 9 Mount Vernon Memorial Highway
 - 11 Lincoln Memorial
 - 12 National Mall
 - 13 World War II Memorial
 - 14 Martin Luther King Jr. Memorial
 - 18 Washington Monument and Grounds Historic District
 - 21 Rock Creek Park and Potomac Parkway Historic District
 - 22 East and West Potomac Parks Historic District
 - 26 Franklin Delano Roosevelt Memorial
 - 27 Arlington Ridge Park
 - 28 Pentagon (NHL- Adjacent Lands)
 - 29 Fort Myer Historic District (NHL- Adjacent Lands)
 - 31 Theodore Roosevelt Island
 - 35 Thomas Jefferson Memorial
 - 37 DC War Memorial
 - 40 Smithsonian Building (NHL- Adjacent Lands)
 - 42 Old Naval Observatory (NHL- Adjacent Lands)
 - 43 Pennsylvania Avenue National Historic Site

- Notes**
- Projection: NAD 1983
 - PRELIMINARY (2026)



Drawing #1A



Area of Potential Effects on Historic Properties

George Washington Memorial Parkway
Washington, D.C.

Area of Potential Effects on Historic Properties | Triumphal Arch Site Cultural Landscapes

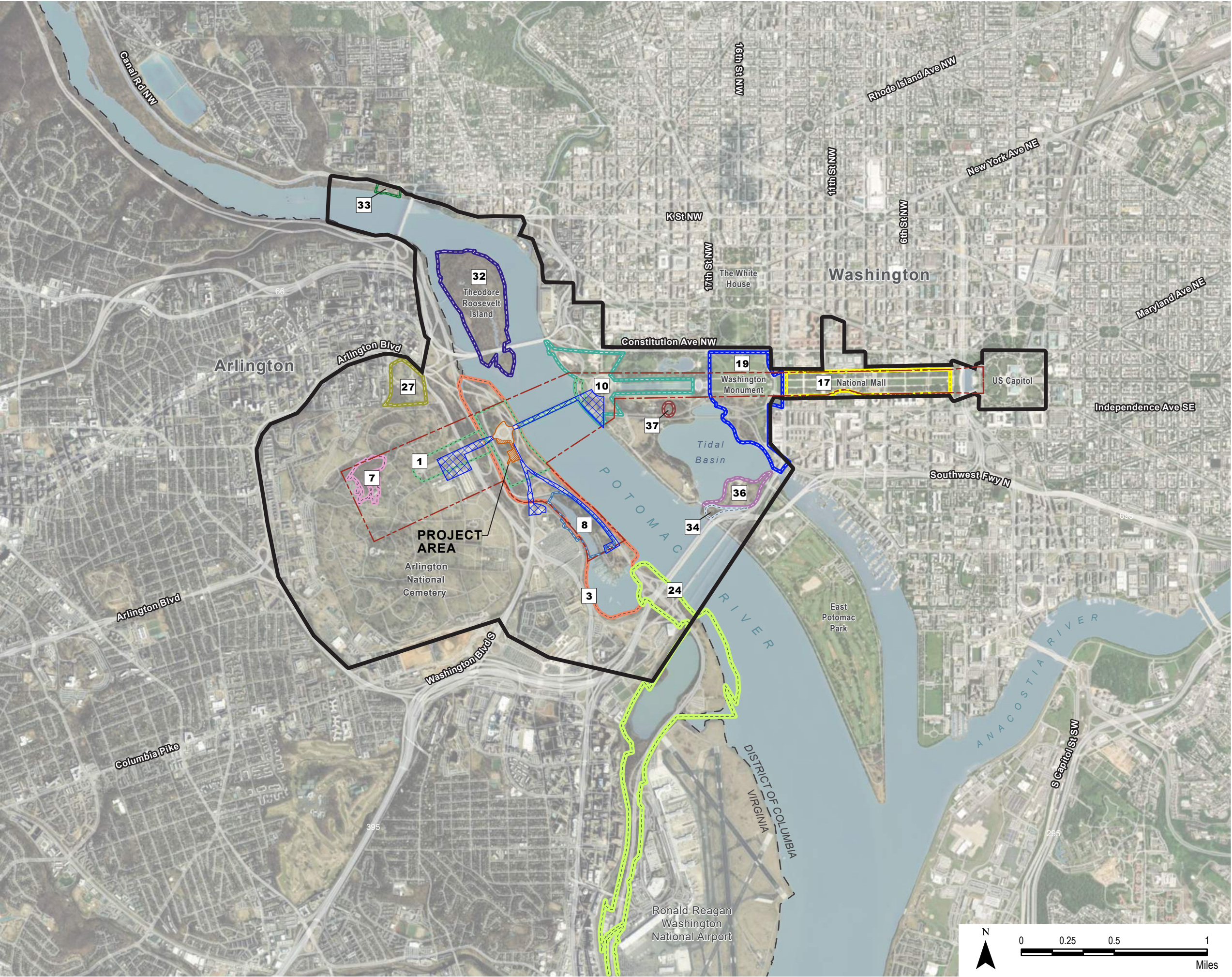
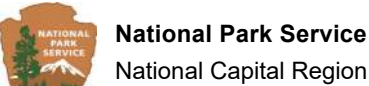
- Sources**
1. ESRI World Imagery Basemap
 2. NCR Cultural Resources GIS

Legend

- Area of Potential Effects
- Direct Effects Boundary
- Project Area
- Construction Staging Area
- Potential Utility Corridors

- 1 Memorial Avenue Corridor
- 3 Lady Bird Johnson Park
- 7 Arlington House
- 8 Lyndon Baines Johnson Memorial Grove on the Potomac
- 10 Lincoln Memorial
- 17 The Mall
- 19 Washington Monument Grounds
- 24 Mount Vernon Memorial Highway - North of Alexandria
- 27 Arlington Ridge Park
- 32 Theodore Roosevelt Island
- 33 Washington Canoe Club
- 34 George Mason Memorial
- 36 Thomas Jefferson Memorial
- 37 DC War Memorial

- Notes**
1. Projection: NAD 1983
 2. PRELIMINARY (2026)



Area of Potential Effects on Historic Properties

George Washington Memorial Parkway
Washington, D.C.

Area of Potential Effects on Historic Properties | Triumphal Arch Site Cultural Landscapes

Sources

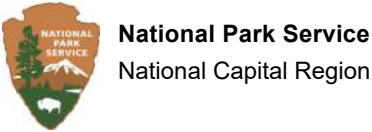
1. ESRI World Imagery Basemap
2. NCR Cultural Resources GIS

Legend

- Area of Potential Effects
 - Direct Effects Boundary
 - Project Area
 - Construction Staging Area
 - Potential Utility Corridors
-
- 1 Memorial Avenue Corridor
 - 3 Lady Bird Johnson Park
 - 7 Arlington House
 - 8 Lyndon Baines Johnson Memorial Grove on the Potomac
 - 10 Lincoln Memorial
 - 17 The Mall
 - 19 Washington Monument Grounds
 - 24 Mount Vernon Memorial Highway - North of Alexandria
 - 27 Arlington Ridge Park
 - 32 Theodore Roosevelt Island
 - 34 George Mason Memorial
 - 36 Thomas Jefferson Memorial
 - 37 DC War Memorial

Notes

1. Projection: NAD 1983
2. PRELIMINARY (2026)



Drawing #2A

