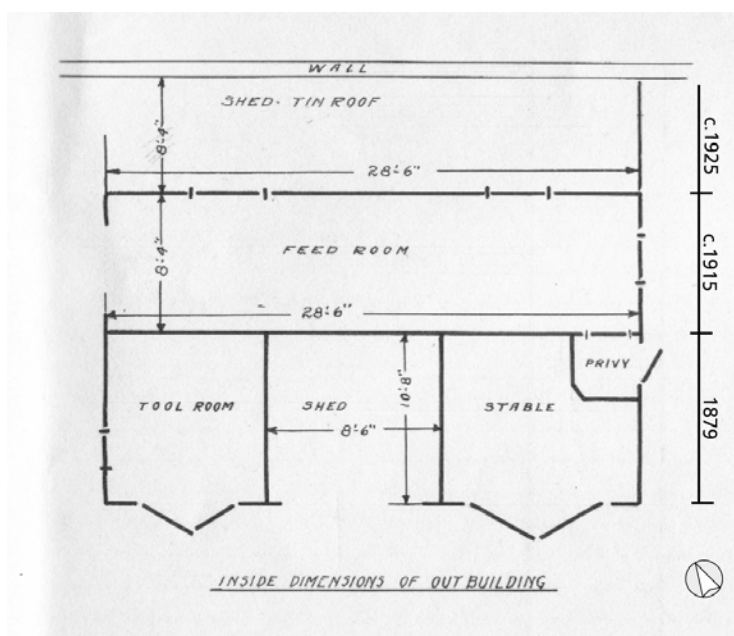
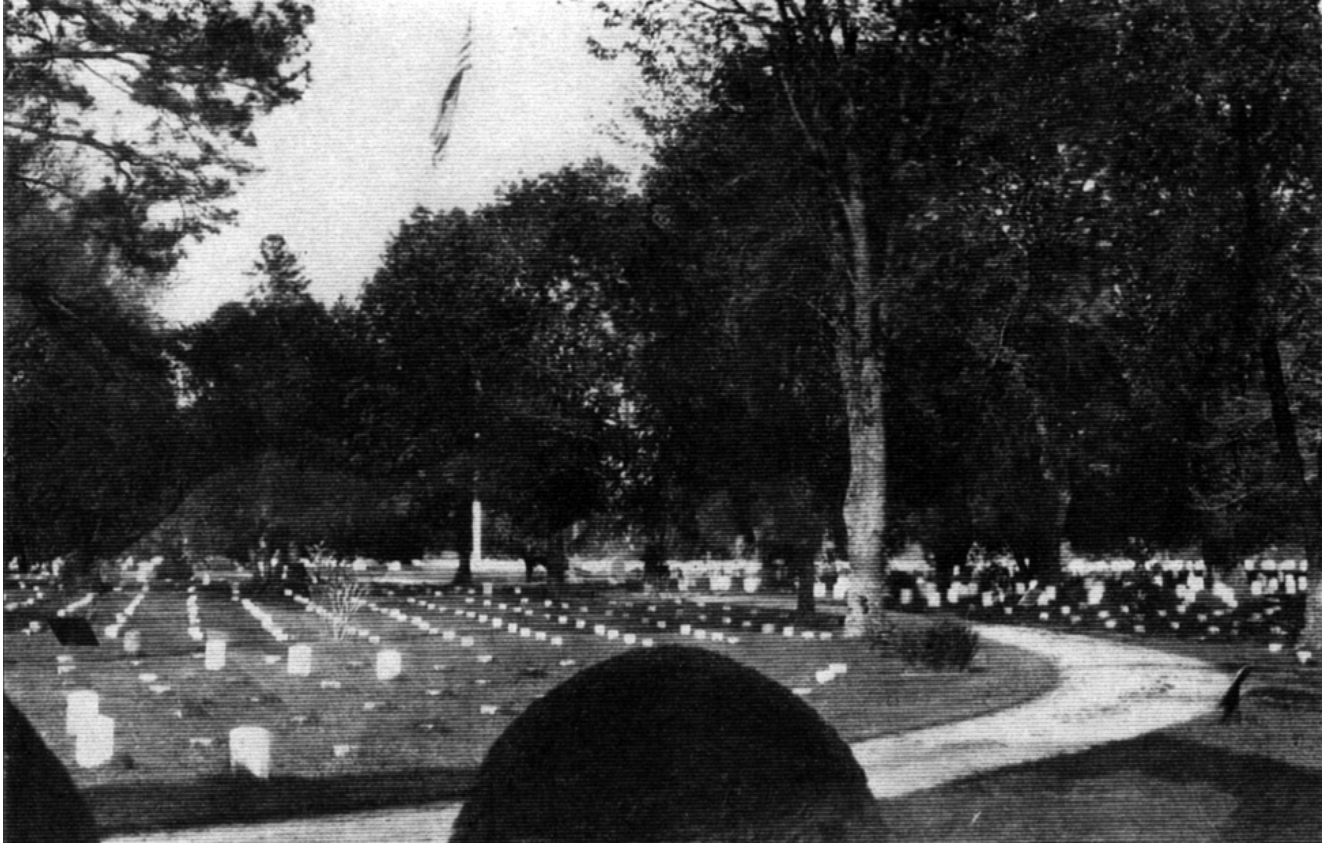




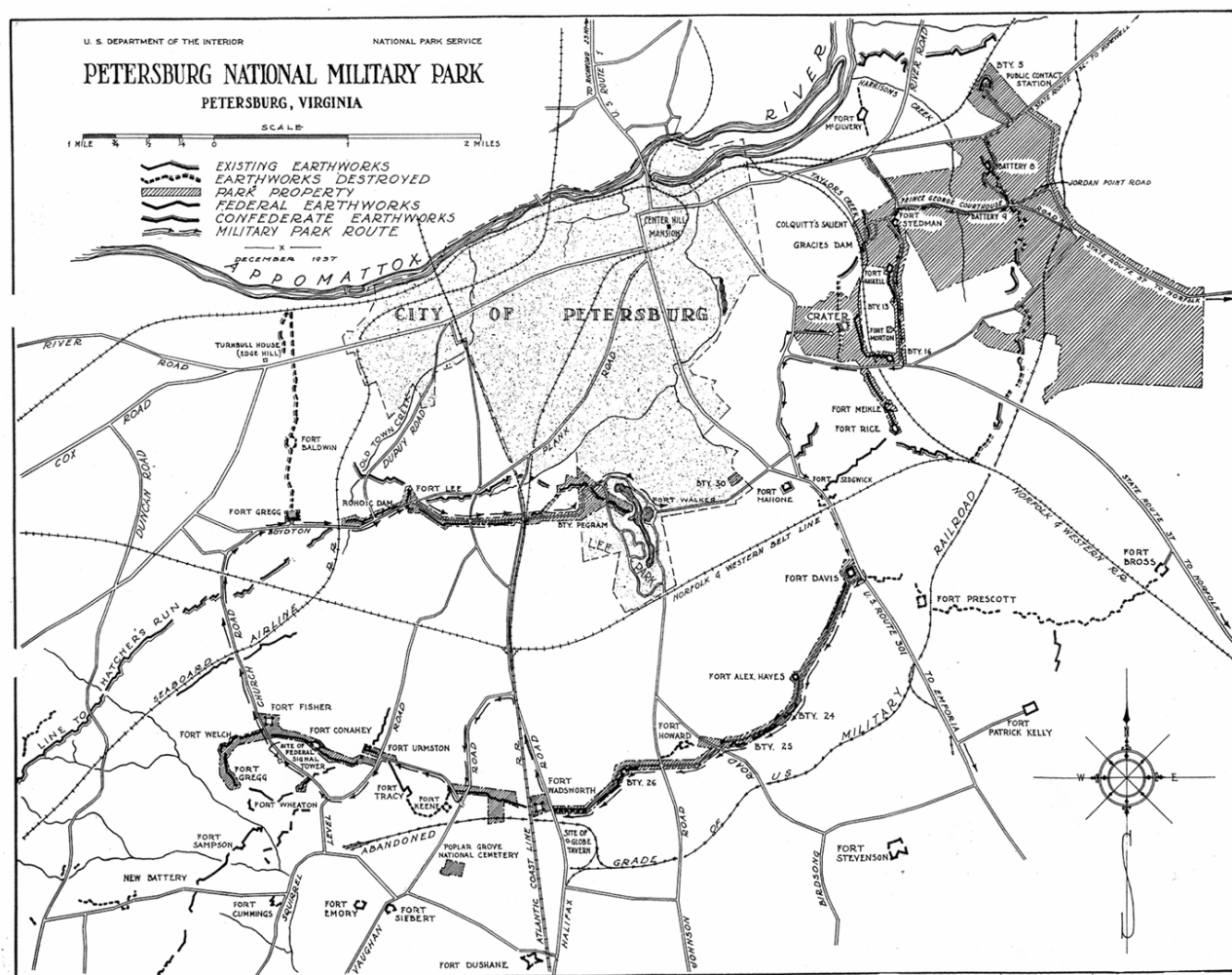
**Figure 1.57: Photograph of Poplar Grove National Cemetery looking east from the main gate, 1904. Note graveled main drive, dark trim on lodge, clipped boxwoods around circular turn-around (to right), tall loblolly pines in background, hedge and magnolias in front of service area (at left), and tablet and settee along drive in the distance. Records of the Quartermaster General, RG 92, Still Pictures Division, National Archives II, College Park, Maryland.**



**Figure 1.58: Plan made in c.1923 of the 1879 toolshed-stable and the "feed room" addition made in c.1915. The "Shed-tin roof" extending to the brick inclosing wall was added in c.1925. RG 79, Entry 5, Records of the War Department Relating to National Parks, 1892-1937, box 50, National Archives II, College Park, Maryland, annotated by SUNY ESF.**



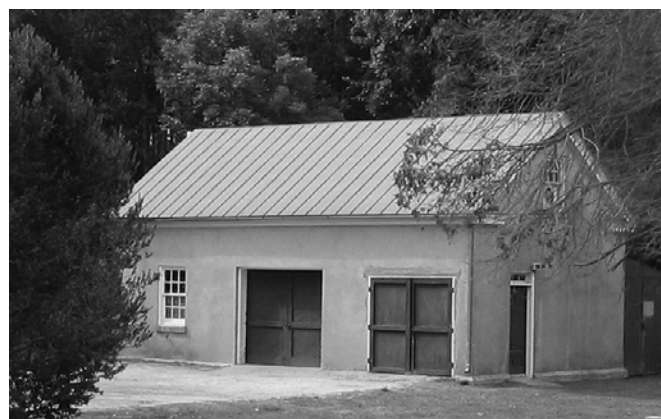
**Figure 1.59: View looking from near the rostrum northeast along the main drive toward the new iron flagstaff, c. 1914. The flagstaff mound appears to have been removed. Note gravel surface of main drive, headstones for known graves, blocks for unknown graves, and iron tablets along main drive and at left along inner circular drive. The dark mounds in foreground are sheared boxwood shrubs. From *War Diary of Luman Harris Tenney 1861-1865* (Cleveland: Evangelical Publishing House, 1914).**



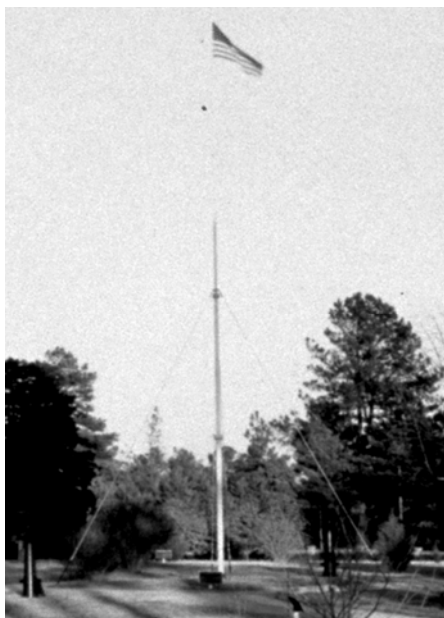
**Figure 1.60: Plan of Petersburg National Military Park showing general intent of original c.1926 park plan, from a 1937 map showing subsequent park development. Poplar Grove is located south of Flank Road in the bottom center of the map. Hatched areas represent lands acquired by the federal government. RG 79, Records of the National Park Service, Entry 31, Poplar Grove National Cemetery, box 2704, NARA II, College Park, Maryland.**



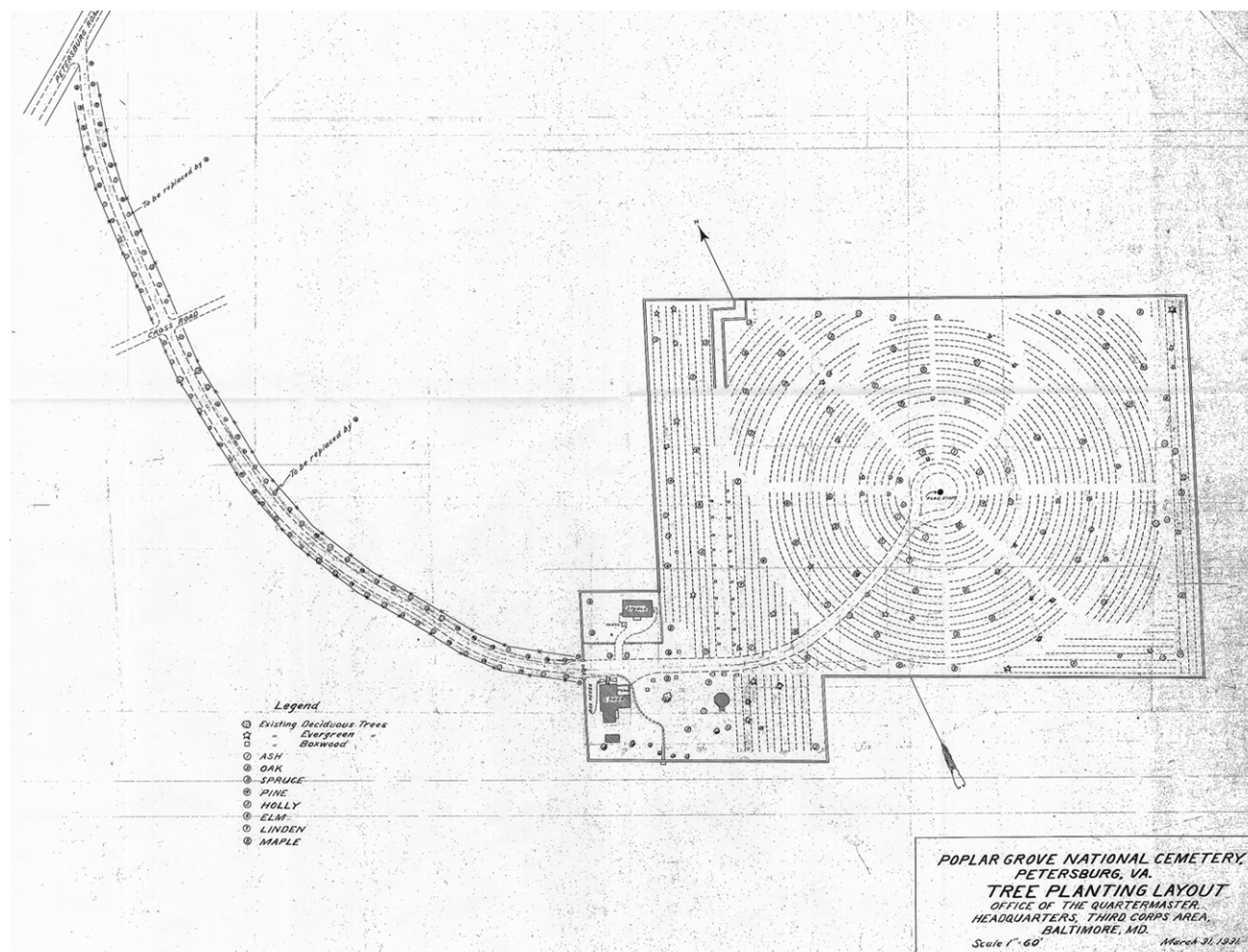
**Figure 1.61 (left): The utility (public restroom) building completed in 1929, view looking southeast from a current photograph. The fence and white paint on the stucco are later additions. SUNY ESF, 2006.**



**Figure 1.62 (right): The stable-garage (outbuilding) completed in 1929, view looking northwest from a current photograph. The set of garage doors to the right is a later alteration, probably replacing a double-hung window. Note similarity of the roofline, eaves, and stucco siding compared with its contemporary, the utility building. SUNY ESF, 2006.**



**Figure 1.63: The new iron flagstaff installed in October 1931, detail from a 1939 photograph. Library of Virginia, from collection of Virginia Room Exhibit at the 1939 World's Fair, image /WF/05/06/017.jpg..**



**Figure 1.64: Proposed planting plan for Poplar Grove National Cemetery and approach road developed by the Headquarters, Third Corps Area, Office of the Quartermaster General, Baltimore, March 31, 1931. The plan indicates existing and proposed specimen trees. RG 79, Entry 5, Records of the War Department Relating to National Parks, 1892-1937, box 50, National Archives II, College Park, Maryland**



**Figure 1.65: Photograph of Poplar Grove taken from the near the rostrum looking east along the south wall, from a tree inspection report, February 1932. The caption in the report reads: "Characteristic pines and hollies at Poplar Grove, Petersburg, Va." The dark appearance of the brick walls is partly due to coverage in ivy. RG 92, Entry 1891, Office of the Quartermaster General, Correspondence, Geographic File, 1922-1935, box 1773, National Archives II, College Park, Maryland.**

