



# Parkland Rehabilitation Design

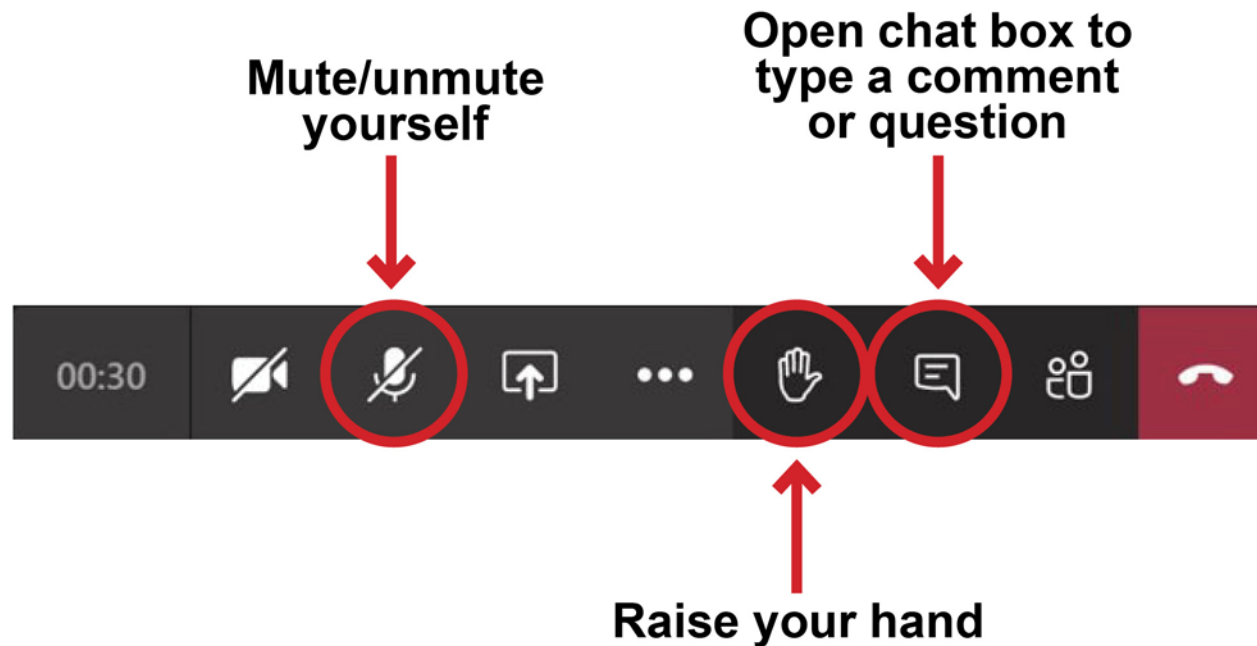
Public Meeting #1

October 20, 2022



# Meeting Housekeeping

Please sign in to the meeting using the website link posted in the chat box.





# Agenda

Welcome + Introductions

Meeting Purpose

Existing Conditions

Review of Concepts

How to Submit Comments

Questions + Answers



## Meeting Purpose + Goals

The NPS is committed to activating and reinvesting in the Parkland section of Shepherd Parkway located in Congress Heights.

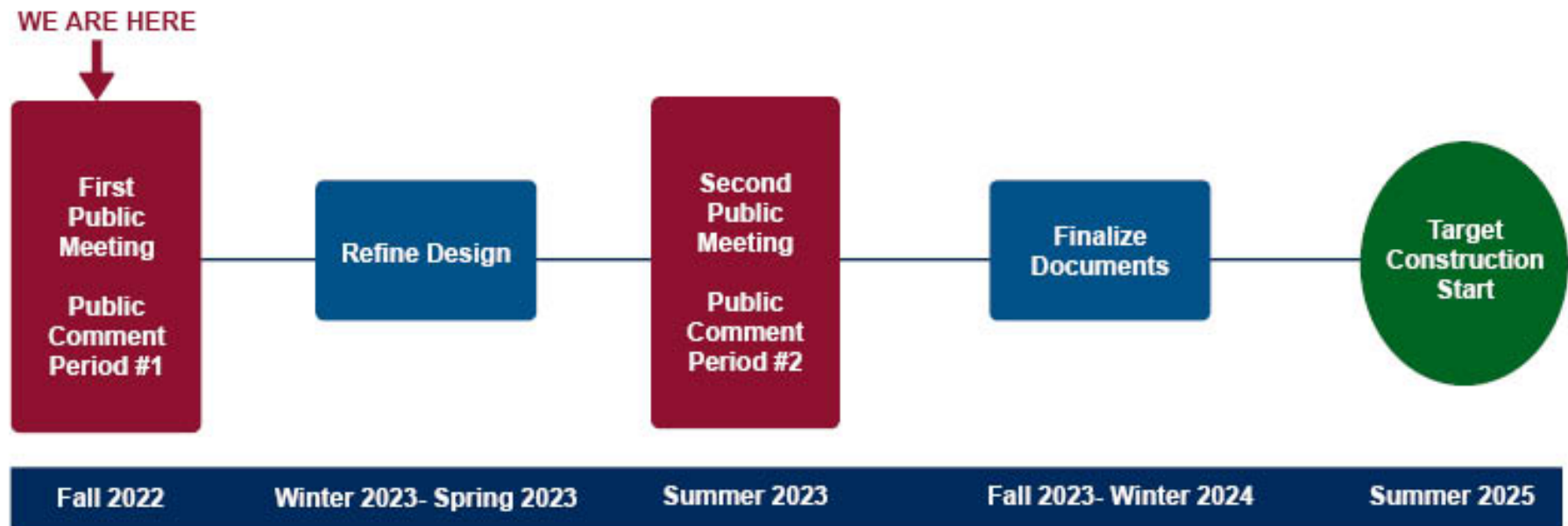
The purpose of this meeting is to provide the public with an opportunity to:

- Review proposed concepts
- Identify any issues, concerns, and ideas

Community input is critical at this phase. The re-design of the playground, selection and mix of recreational amenities, and future programming will be largely based on community input.



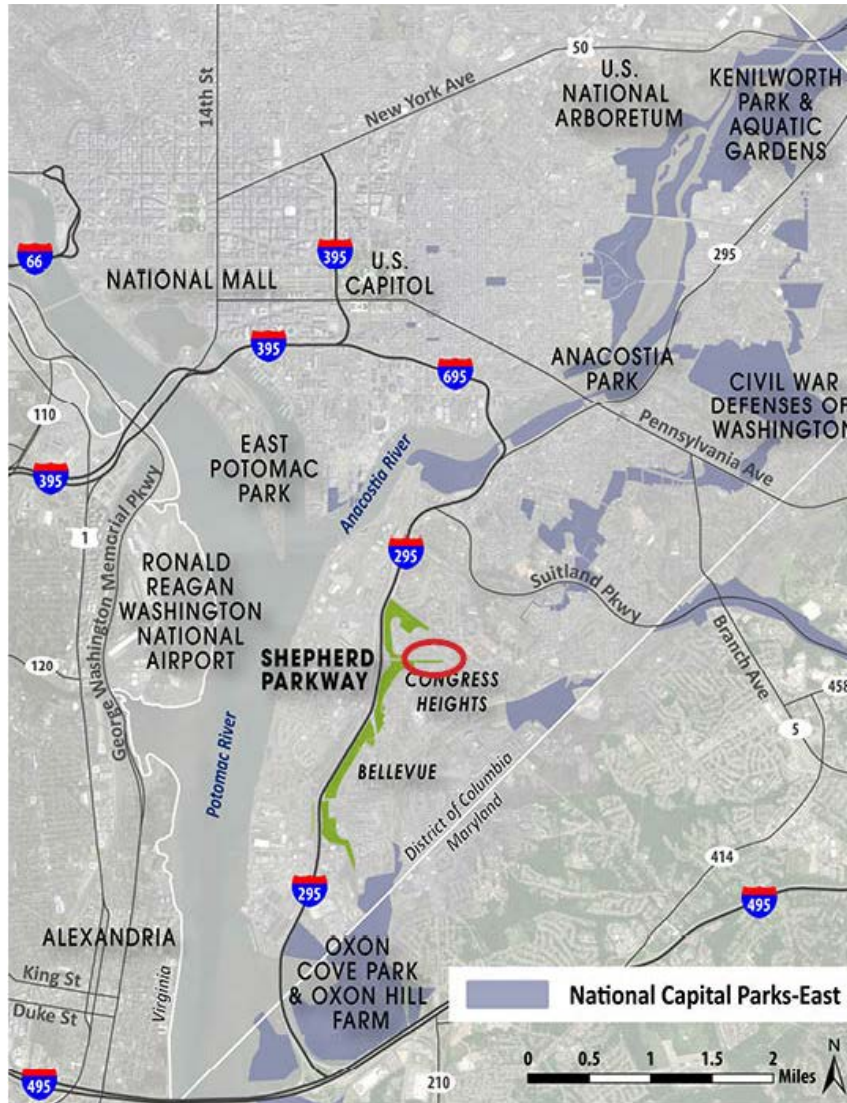
# Project Timeline







# Project Context: Shepherd Parkway



Shepherd Parkway Area Context Map



Regional Context Map





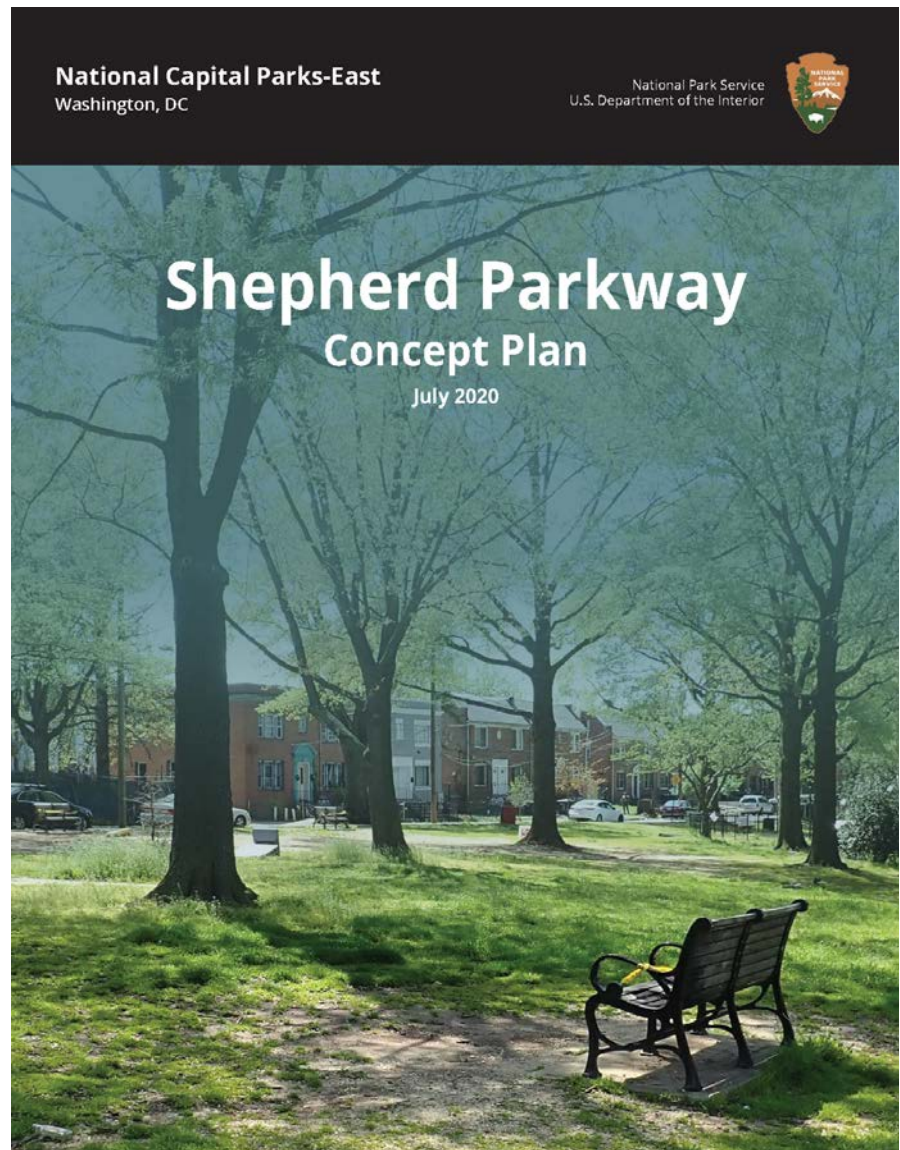
## Project Area: Parkland Section of Shepherd Parkway





# Shepherd Parkway Development Concept Plan

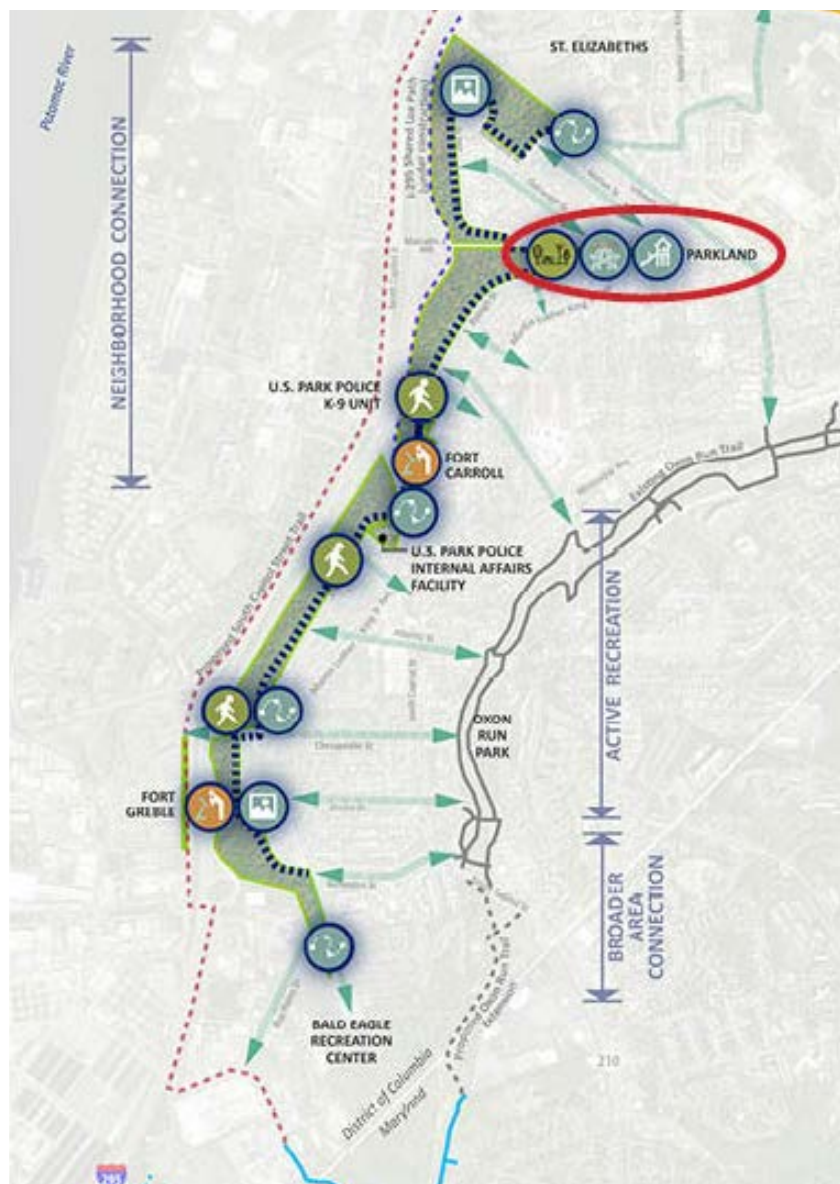
- NPS developed the Shepherd Parkway Development Concept Plan (DCP) in 2020
- NPS conducted 2 public meetings and public comment periods for the DCP
- Rapid Ethnographic Assessment Procedure (REAP) also informed the DCP
- DCP provided 2 overall concepts for Shepherd Parkway and 2 specifically for Parkland
- Parkland is the first project of the DCP for implementation







# Shepherd Parkway Development Concept Plan



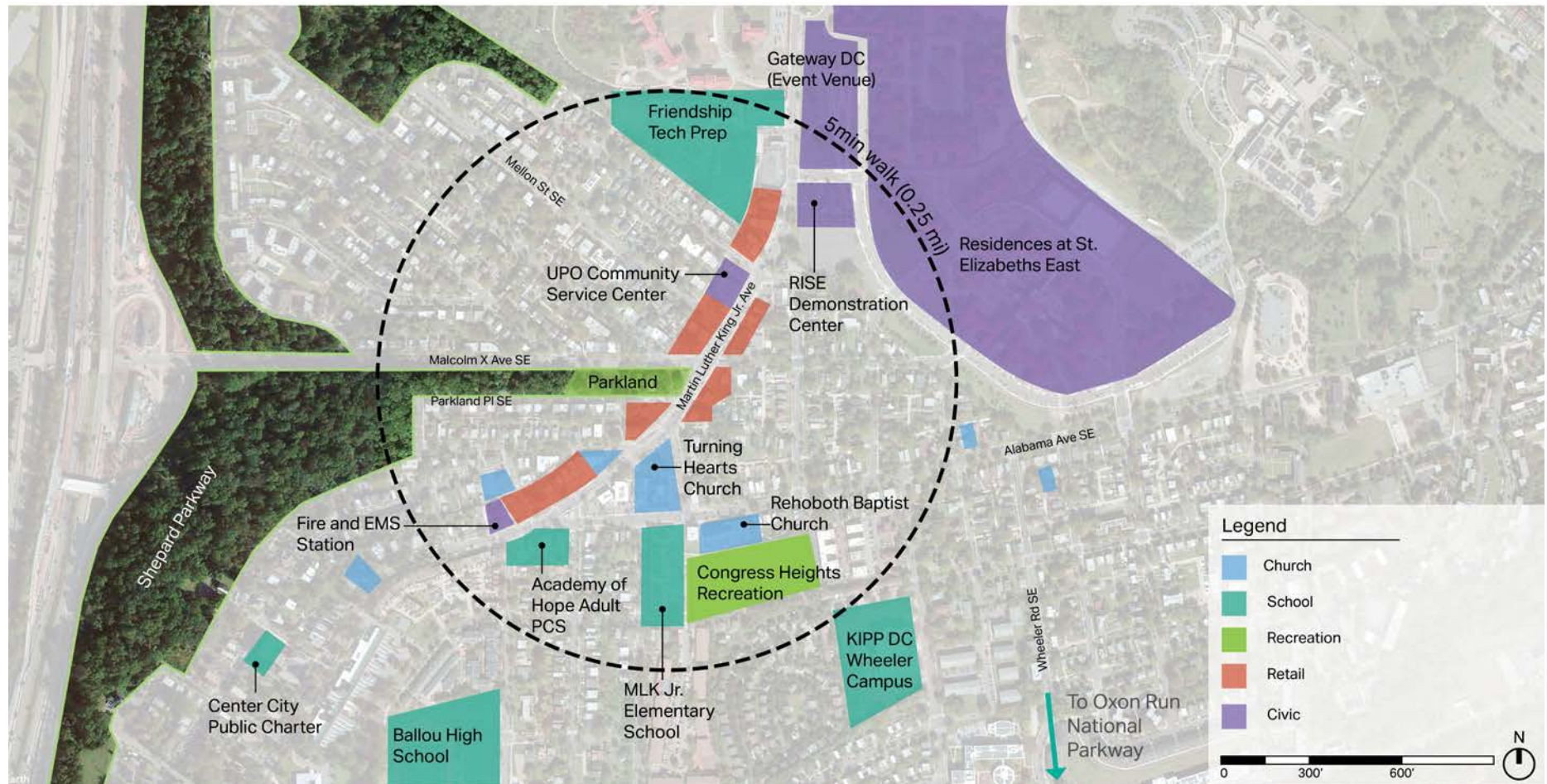
- Shepherd Parkway
- Existing Sullyland Parkway Trail
- Existing Oxon Run Trail
- Existing Oxon Cove Multi-Use Biker Trail
- - - Proposed Oxon Run Trail Extension (source: Oxon Run Trail Rehabilitation Concept Plan, DDOT, 2010)
- - - Proposed Oxon Cove Multi-Use Biker Trail Extension (source: Oxon Cove Multi-use Biker Trail, NPS, 2016)
- - - I-295 Shared-Use Path (under construction; exact alignment to be confirmed; source: I-295/Malcolm X Avenue Interchange Improvement Project NCPC Final Design Submission, GSA, 2016)
- - - Proposed South Capitol Street Trail (exact alignment to be confirmed; source: South Capitol Street Trail fact sheet, DDOT)

## Proposed Key Activity Nodes and Connections

- - - Trail
- Flexible Open Green Space
- Picnic / Family Gathering
- Interpretive Signage and Treatments
- Trail Connector to Existing/Future Trails
- Playground
- Flexible Open Space for Events
- Overlook / Filtered View
- Connections to Local Trails and Destinations



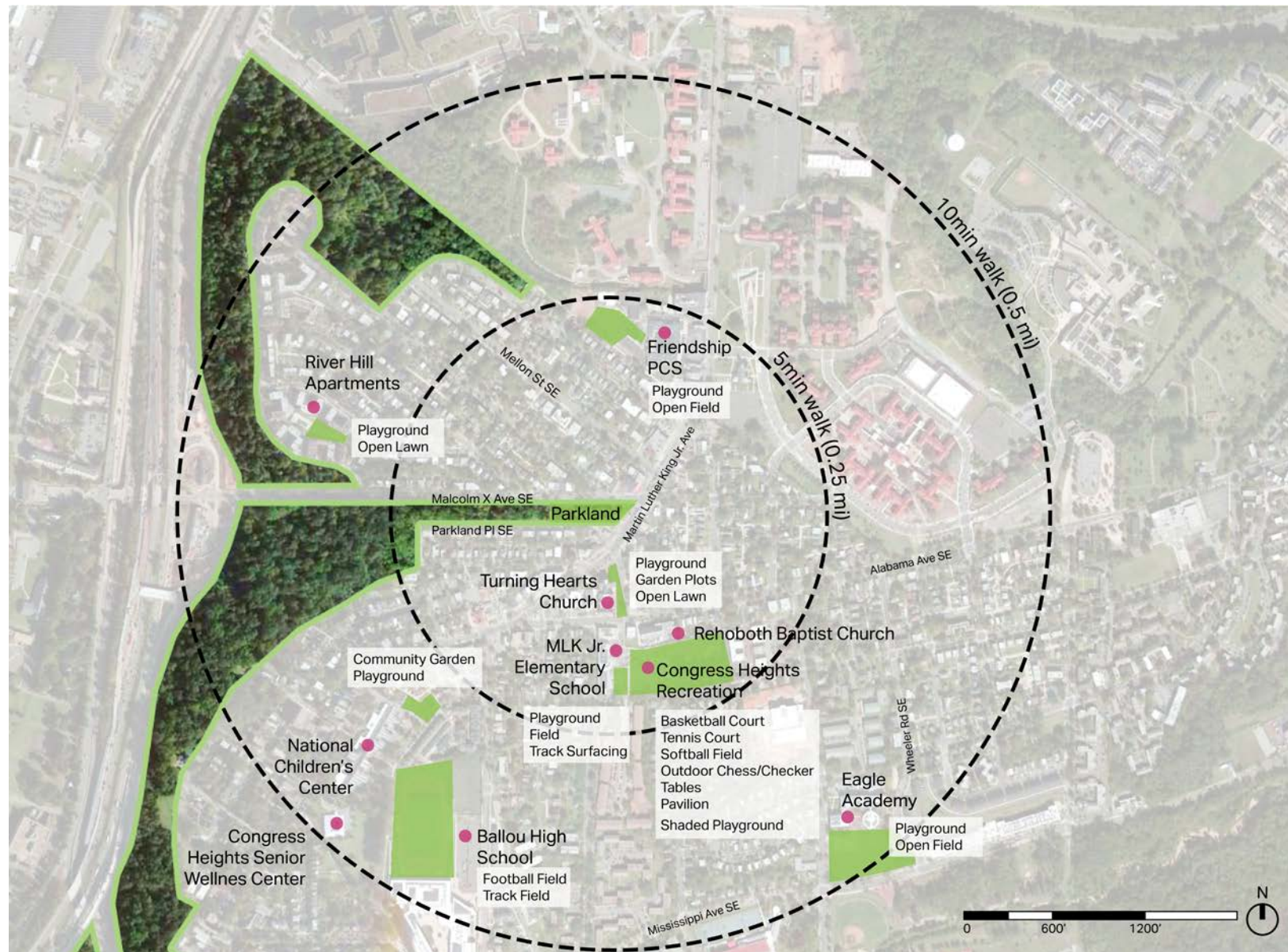
# Nearby Land Uses







# Nearby Recreation Amenities





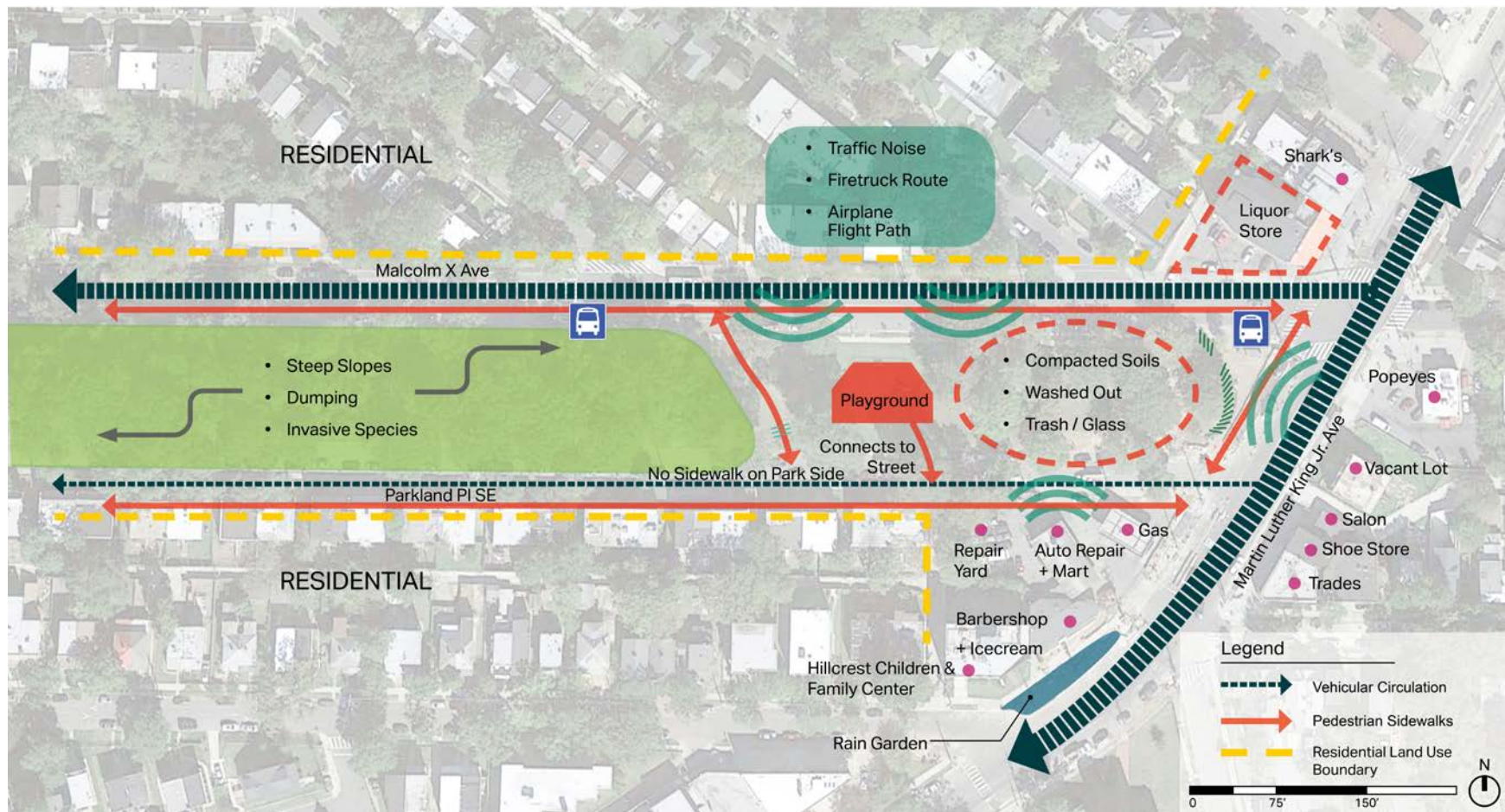


# Area of Potential Effect





# Site Analysis







## Site Photos: Northeast



Looking north along Martin Luther King Jr. Avenue, the Parkland site has a busy intersection with a high volume of vehicular traffic and no shade at the plaza.



Looking west along Malcolm X Avenue, adult uses discourage youth from using the park. Despite being prohibited, alcohol use occurs in the park.





## Site Photos: Southeast



Looking northwest from Martin Luther King Jr. Avenue, significant portions of the site show signs of soil compaction and erosion.



Looking west along Parkland Place, the site has exposed tree roots and lacks groundcover.





## Site Photos: Southwest



Looking northwest from Parkland Place, the playground is surrounded by fencing.



Looking east along Malcolm X Avenue, the playground is raised from street level.





## Site Photos: Northwest



The playground includes a swingset.



The playground has a lack of accessible play features.





## Site Photos: West



Looking northwest from Parkland Place, the western edge of the project site is wooded and contains invasive plants.



Looking northwest, an unofficial pedestrian path is worn across the site.





# Park Design Approach

The concepts attempt to incorporate the park's existing features in the design, including the following:

- Tree canopy
- Park benches
- Circulation paths
- Topography
- Playground area





# Review of Concepts

Both concepts have the following features:

- Circulation throughout the park
- New, enlarged playground areas
- Flexible community gathering space
- Park signage
- Future trail connection to Shepherd Parkway
- Picnic areas, including individual tables and grouped tables with shade structure
- Site furniture including benches, trash receptables, bike rack, and lighting
- Education areas
- Permeable paving

Features not included:

- Community garden
- Off-leash dog park
- Spray park
- Sandbox
- Restrooms





# Concept A: Neighborhood National Park w/ Fitness Loop





# Concept A: Neighborhood National Park w/ Fitness Loop

## Site Circulation







# Concept A: Neighborhood National Park w/ Fitness Loop

## Existing Trees





# Concept A: Neighborhood National Park w/ Fitness Loop

## Proposed New Trees







# Concept A: Neighborhood National Park w/ Fitness Loop

## Proposed Activity Locations







# Concept A: Neighborhood National Park w/ Fitness Loop Playground







# Concept A: Neighborhood National Park w/ Fitness Loop

## Picnic Area







# Concept B: Neighborhood National Park w/ Playground & Nature Play







# Concept B: Neighborhood National Park w/ Playground & Nature Play

## Site Circulation





# Concept B: Neighborhood National Park w/ Playground & Nature Play

## Existing Trees







# Concept B: Neighborhood National Park w/ Playground & Nature Play

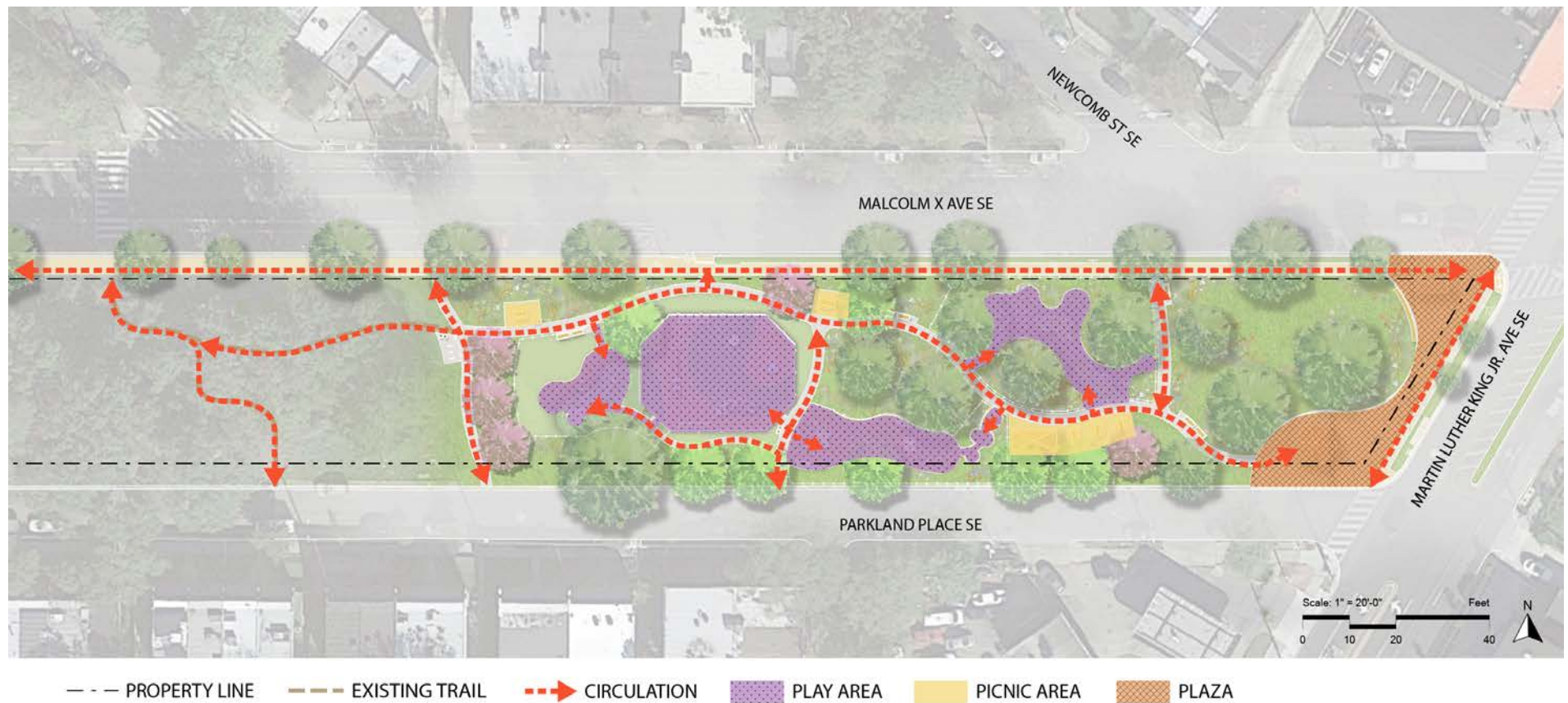
## Proposed New Trees





# Concept B: Neighborhood National Park w/ Playground & Nature Play

## Proposed Activity Locations







# Concept B: Neighborhood National Park w/ Playground & Nature Play

## Picnic and Nature Play







# Concept B: Neighborhood National Park w/ Playground & Nature Play

## Play Area







## Concepts A and B: Option for Plaza Planting Buffer







# Suggested Native Plantings



Swamp White Oak (*Quercus bicolor*)



Red Maple (*Acer rubrum*)



American Hop-Hornbeam (*Ostrya virginiana*)



Rhododendron (*Rhododendron* "Nova Zembla")



Smooth Witherod (*Viburnum nudum*)



Sweet Pepperbush





# Suggested Native Plantings



Hairy Alum Root (*Heuchera villosa*)



Grassland Sedge (*Carex divulsa*)



Blazing Star (*Liatris spicata*)



Coneflower (*Echinacea purpurea*)



White Turtlehead (*Chelone gabra*)



Blue False Indigo (*Baptisia australis*)





# Park Amenities Preferences

Which do you prefer?



A. Group picnic areas



B. Small picnic areas



C. Fitness equipment



D. Grills



E. Education Stations



F. Play





# Play Equipment Preferences- Types

Which do you prefer?



A. Playset



B. Slide



C. Climbing



D. Spin



E. Music



F. Swings



G. Nature Play

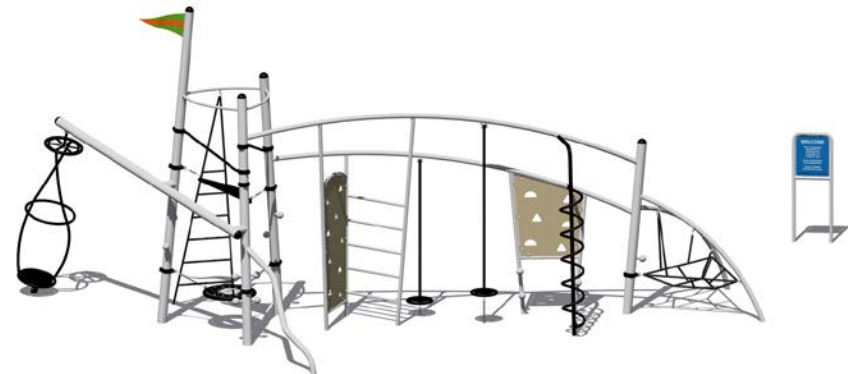


# Playground Equipment Preferences- Playset

Which do you prefer?



A. Traditional Style



B. Modern Style





# Comparing Concepts

**Concept A: Neighborhood National Park w/ Fitness Loop**



**Concept B: Neighborhood National Park w/ Playground & Nature Play**





# How Can You Submit Comments?

- **Online:** Submit written comments by **November 20** at <https://parkplanning.nps.gov/projectHome.cfm?projectId=112091>
- **Written comments can be mailed to:**

Superintendent  
Attn: Parkland Rehabilitation  
National Park Service  
1900 Anacostia Drive SE  
Washington, DC 20020
- **Mailed comments** must be postmarked by **November 20** to receive consideration

**Please Note:** Before including your address, phone number, e-mail address, or other personal identifying information in your comment, you should be aware that your entire comment – including your personal identifying information – may be made publicly available at any time. While you can ask us in your comment to withhold your personal identifying information from public review, we cannot guarantee that we will be able to do so.





## Next Steps

The NPS will take the following next steps at the end of the public comment period:

- Receive and review public comments
- Add lighting to park concepts
- Refine design to incorporate comments
- Return to public with a single design concept



## Questions + Answers

