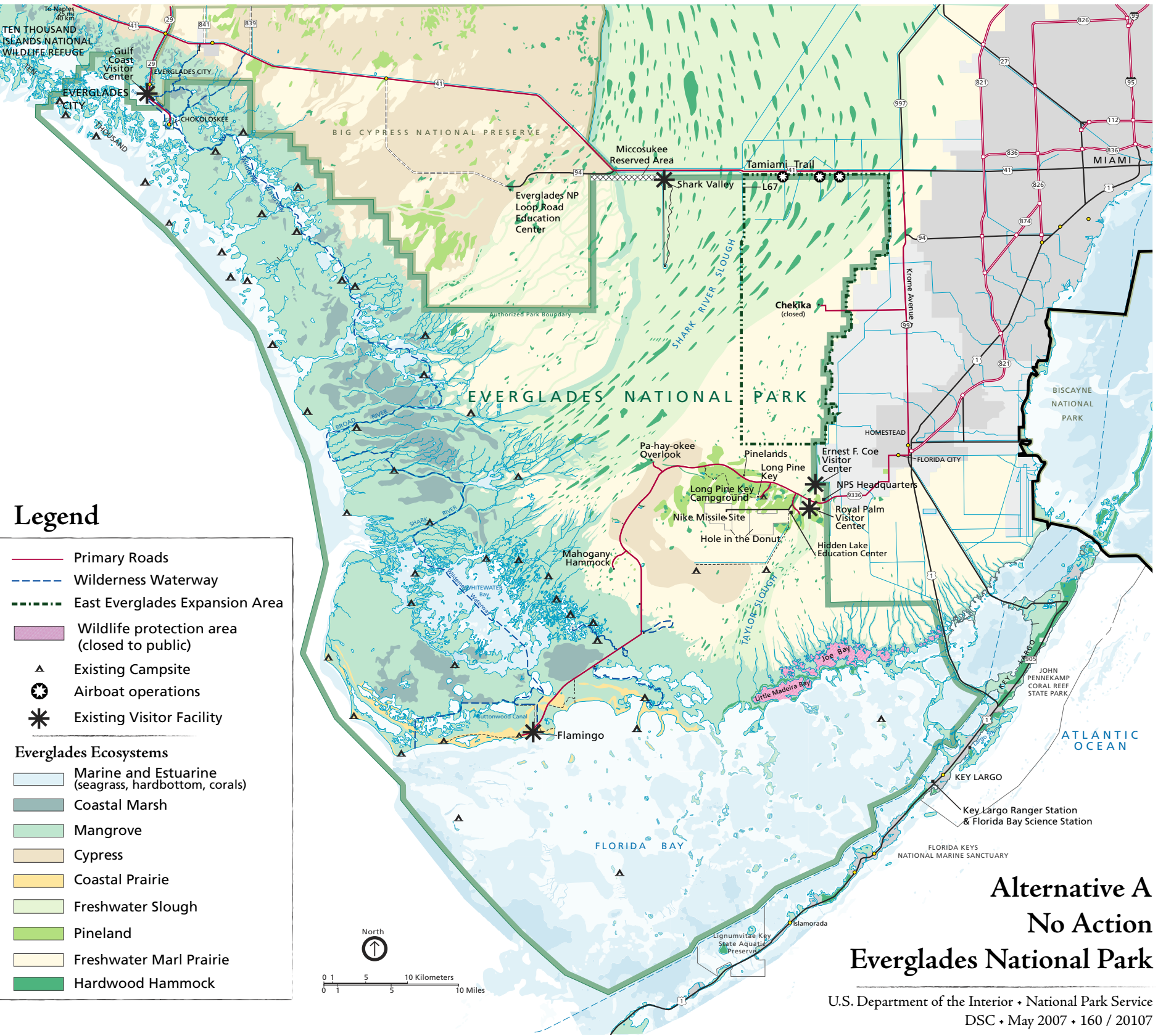


ALTERNATIVE A, No-ACTION (HOW THE PARK IS MANAGED NOW)



ALTERNATIVE A, No-ACTION (HOW THE PARK IS MANAGED NOW)

- Current management trends and strategies would continue.
- Existing facilities would remain and continue to be maintained.
- Ongoing projects would continue.
- Current resource management activities and visitor services would continue.
- No wilderness would be proposed in East Everglades.
- The Flamingo area would be managed according to a separate plan now underway, the Flamingo Commercial Services Plan (CSP). The CSP is expected to be completed later in 2007 and the selected alternative will be incorporated into each of the GMP alternatives, and will be considered as common to all alternatives.

