



# **General Management Plan and Environmental Impact Statement for Buck Island Reef National Monument**

**Public Meetings  
June, 2004**

**Joel A. Tutein, Superintendent  
Zandy Hillis-Starr, Chief Resource Management**



# **Buck Island Reef National Monument**

- **176-acre tropical dry forest island**
- **Most significant coral barrier reef under U. S. jurisdiction**
- **Expanded 2001 adding 18,135 acres of submerged lands**
- **Only fully protected marine area in National Park System**



# Buck Island Reef NM Expansion



 **Original Boundary**  
880 acres

 **Expanded Boundary**  
19015 acres

# **Park Expansion Story**

- **Park Expansion by Presidential Proclamation  
January 2001**
- **Challenged U. S Government Ownership of  
Submerged Lands March 2001**
- **Review by Government Accounting Office  
Findings November 2002**
- **Interim Regulations  
Published April 2003 / Implemented May 2003**



# New Park Regulations

- All extractive uses eliminated
- Boat anchoring allowed only in designated areas
- General Management Plan & Vessel Management Plan in 2 years





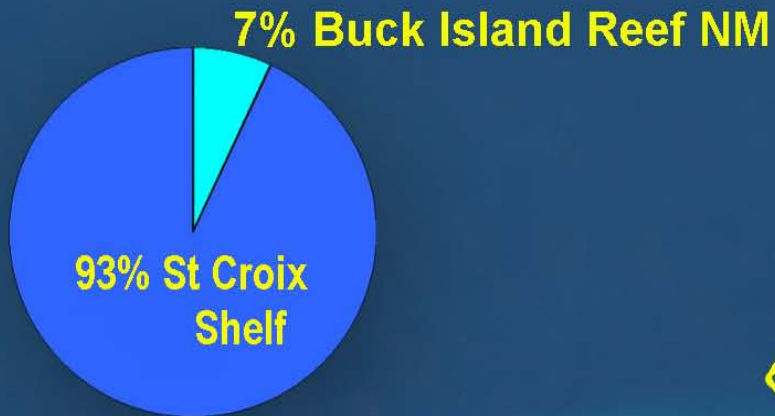
# Benefits to Marine Resources

- Large enough to be biologically relevant containing sufficient interrelated habitats for a healthy ecosystem.
- Improved habitat diversity providing healthy habitats for wildlife to forage, breed, nest, rest, and calve protected from extractive uses.
- Size does not significantly impact available fishing areas.



Photo from Reef Fish Identification

# Buck Island Reef National Monument Percent of St. Croix Shelf



***Overtime, the Monument will improve adjacent fishing areas.***





# National Park Service Organic Act

**”...to promote and regulate the use of the...national parks...which purpose is to conserve the scenery and the natural and historic objects and the wild life therein and to provide for the enjoyment of the same in such manner and by such means as will leave them unimpaired for the enjoyment of future generations.”**



# Stewardship

**National Park Service has an obligation to develop a clear direction for the future stewardship of all parks under its care.**





# **The General Management Plan** **provides parks with a blueprint for stewardship.**



**St. Croix Ground Lizard**



**Flowering Agavi**



**Juvenile French Angelfish**



# **Why Do We Plan?**

**Planning is required by the Law**

**Nat'l Historic Preservation Act 1966**

**Nat'l Environmental Policy Act 1970**

**Nat'l Parks & Recreation Act 1978**

**Gov't Performance & Results Act 1993**

**Benefits**

**Logical, trackable, and a rationale**

**Analysis**

**Public involvement**

**Accountability**



# **What is a General Management Plan?**

- **Creates a clear vision & direction for the future**
- **Broad, conceptual, & goal driven**
- **Defines types of resource conditions, visitor experiences, & management actions that will best preserve the resources**
- **Identifies management strategies, uses, & development that will achieve those conditions**



# **What the GMP does for the park ?**

- **Sets priorities for stewardship, visitor understanding, partnerships, facilities, & operations for the next 15 – 20 years**
- **Guides park programs**
- **Ensures decision making is developed in consultation with stakeholders and the public**
- **GMP is adopted by NPS leadership after analysis of benefits, environmental impacts, & economic costs of alternative courses of action**



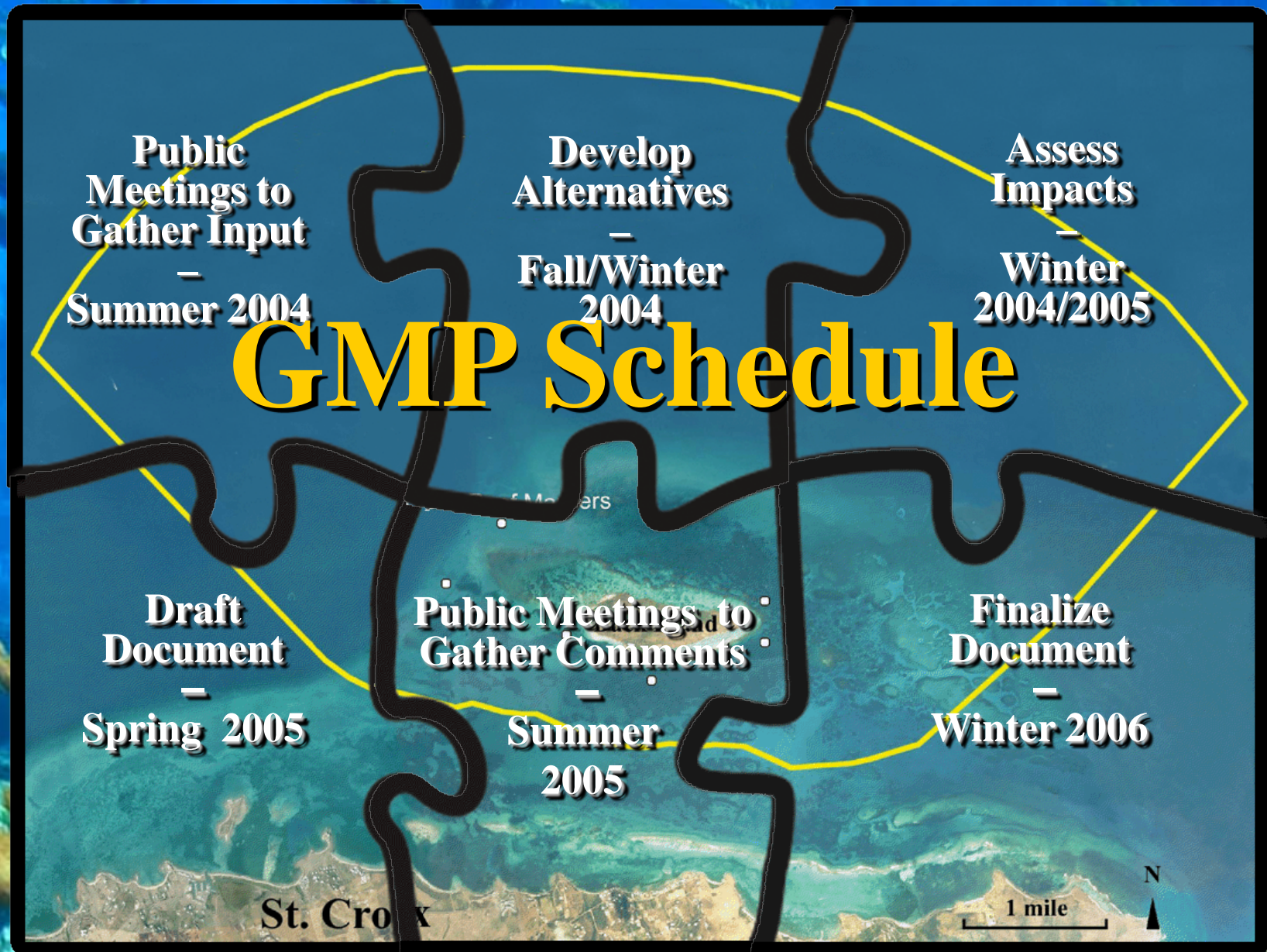
# Planning Process

- **Scoping Meetings with Stakeholders**
- **Public Scoping Meetings**
- **Set Goals and Objectives**
- **Analyze Resources**
- **Develop Alternatives**
- **Draft GMP/EIS**
- **Final GMP/EIS**



**BUIS Concessionaires Meeting**









**The National Park Service  
cares for special places saved  
by the American people so  
that all may experience their  
heritage**







# Park Mission Statement

**Buck Island Reef National Monument's mission is to protect, preserve, manage, and interpret the monument's seascapes, scenic views, and unique natural and cultural resources unimpaired for the education, enjoyment and inspiration of present and future generations.**



# Park Purpose

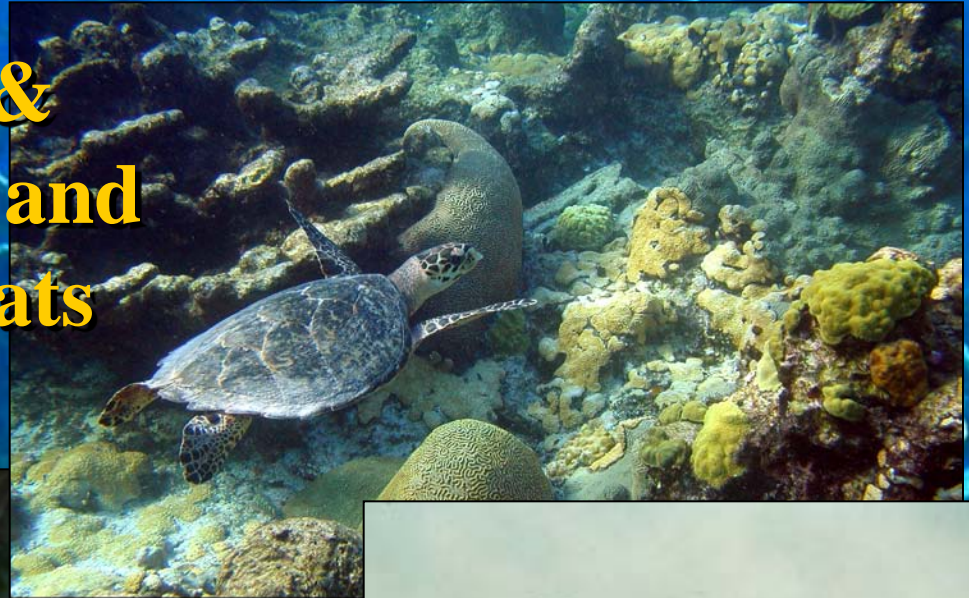
**Preserve and protect  
the island and tropical  
marine ecosystem  
including coral reefs,  
sea grass beds,  
octocoral hardbottom,  
sand communities,  
algal plains, shelf edge,  
and oceanic habitats**





# Park Purpose

**Protect threatened & endangered species and enhance their habitats and survivability**





# Park Purpose

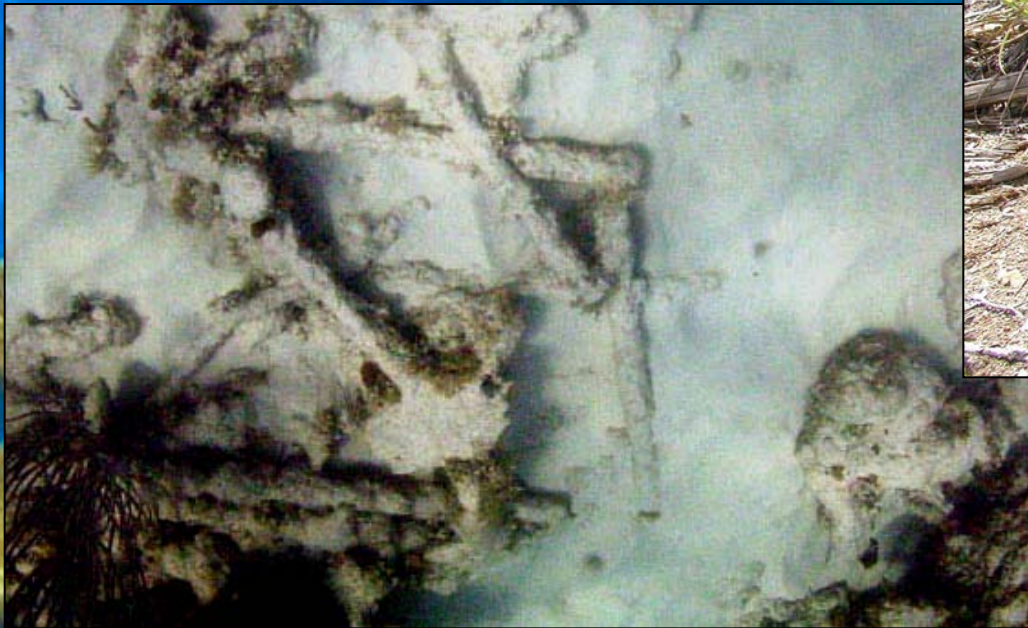
**Enhance the health  
and diversity of  
fisheries resources  
through their protection**





# Park Purpose

**Protect and manage  
terrestrial and submerged  
cultural resources**



**1800's Shipwreck Materials**



**Historic Danish Ruins**



# Park Purpose

**Preserve this area of outstanding scientific, aesthetic, and educational importance for the benefit and enjoyment of the people now and for the future.**





# **Your Input Counts**

- **NPS needs your comments by July 26**
- **Please include your name and address**
- **E-mails, letters, comment cards may be used**



**The National Park Service will use  
your input to prepare  
the General Management Plan**





# **The Buck Island Reef GMP Review Team**

- **NPS Park Staff**

**Superintendent Joel Tutein**

**Chief Resources Zandy Hillis-Starr**

**Chief Interpretation William Cissel**

- **NPS Regional Staff**

**Planning John Barrett**

- **Contractor Parsons**

**Team Leader Alyse Getty**

**Steve Bach, Angie Cook**



A collage of images related to Buck Island Reef National Monument. The central text is overlaid on a background of a beach scene. The collage includes: a white boat docked at a pier; two women in swimwear walking on a sandy beach; a person in a white shirt and dark pants standing on the beach; a diver underwater; a large whale breaching the water; a sailboat on the water; and a map of the island. The background of the entire slide is a vibrant blue and green underwater scene with coral and fish.

# Help Us Plan for the Future of Buck Island Reef NM