

- Ranger Station
- Park Boundary
- National Forest Areas
- Roads
- Designated Area Shown for Alternatives
- Trails
- Water

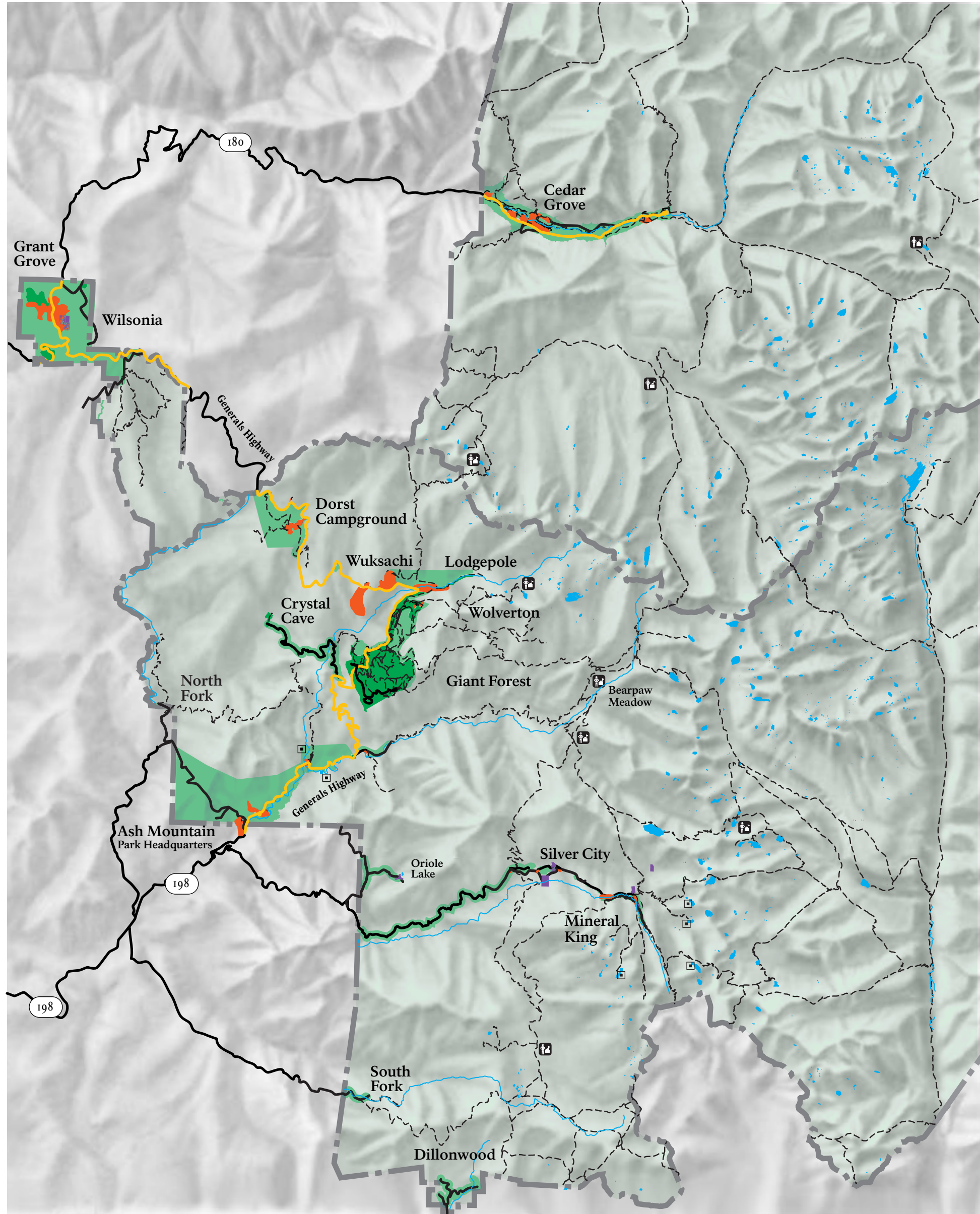
North

0 1 5 Kilometers

0 1 5 Miles

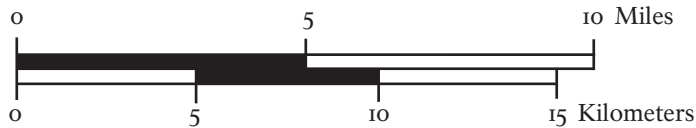
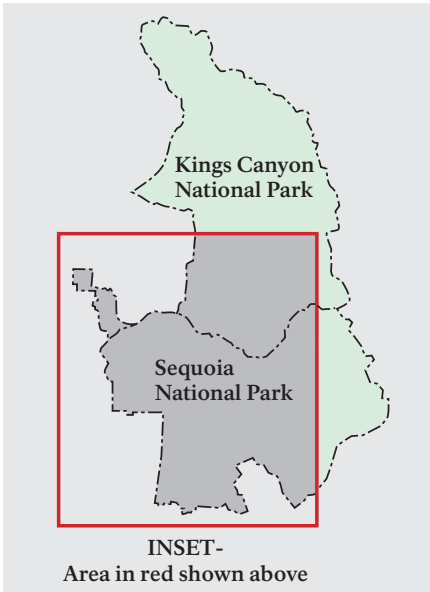
[This page intentionally left blank.]





- Park Boundaries
  - Lakes, Rivers and Streams
  - - - Trails
  - Roads
  - Private Property
  - Backcountry Ranger Stations
  - Hydroelectric Utility Dams
- Management Prescriptions / Zones**
- High Use Scenic Driving (Road corridor)
  - Development
  - High Use Frontcountry
  - Low Use Frontcountry\*
  - Backcountry

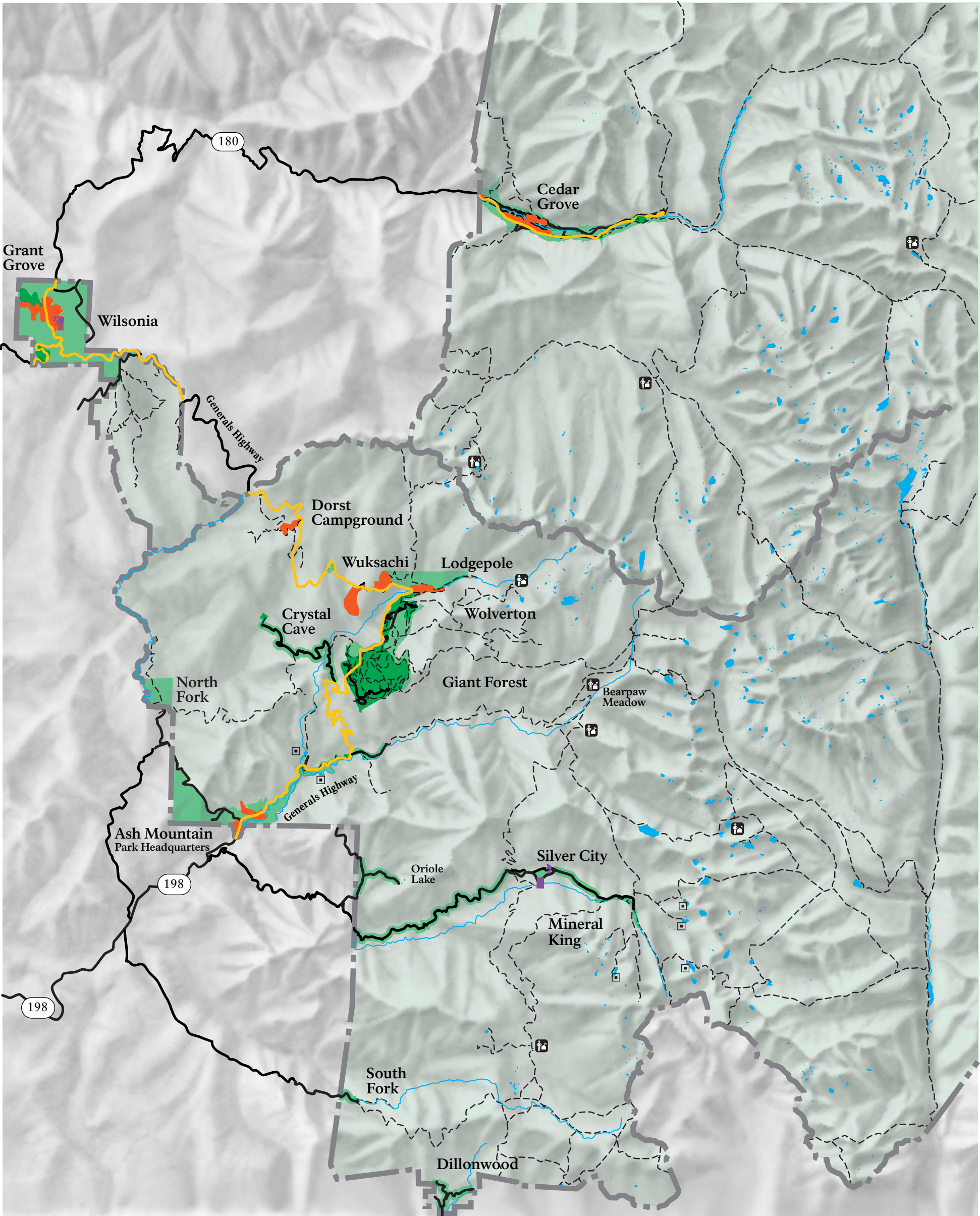
\* Low Use Frontcountry areas adjacent to roads enlarged for visibility



**NO ACTION**  
**Continue Current Management**  
**Sequoia & Kings Canyon National Parks**  
May 2002 • DSC• 102 • 20,129

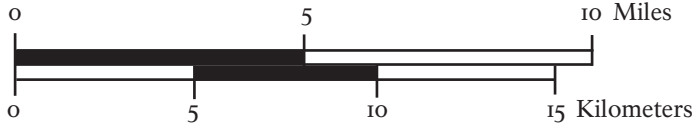
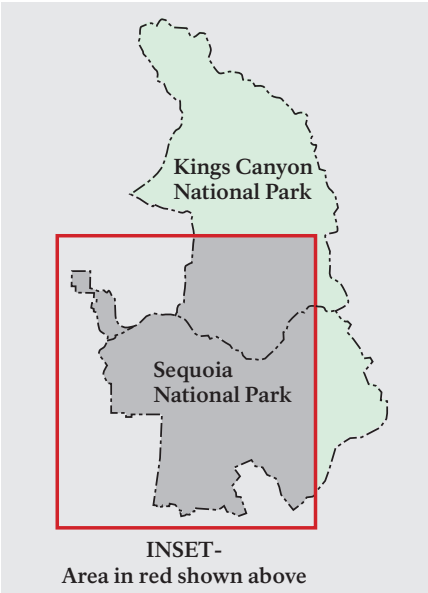
[This page intentionally left blank.]





- Park Boundaries
  - Lakes, Rivers and Streams
  - - - Trails
  - Roads
  - Private Property
  - Backcountry Ranger Stations
  - Hydroelectric Utility Dams
- Management Prescriptions / Zones**
- High Use Scenic Driving (Road corridor)
  - Development
  - High Use Frontcountry
  - Low Use Frontcountry\*
  - Backcountry

\* Low Use Frontcountry areas adjacent to roads enlarged for visibility



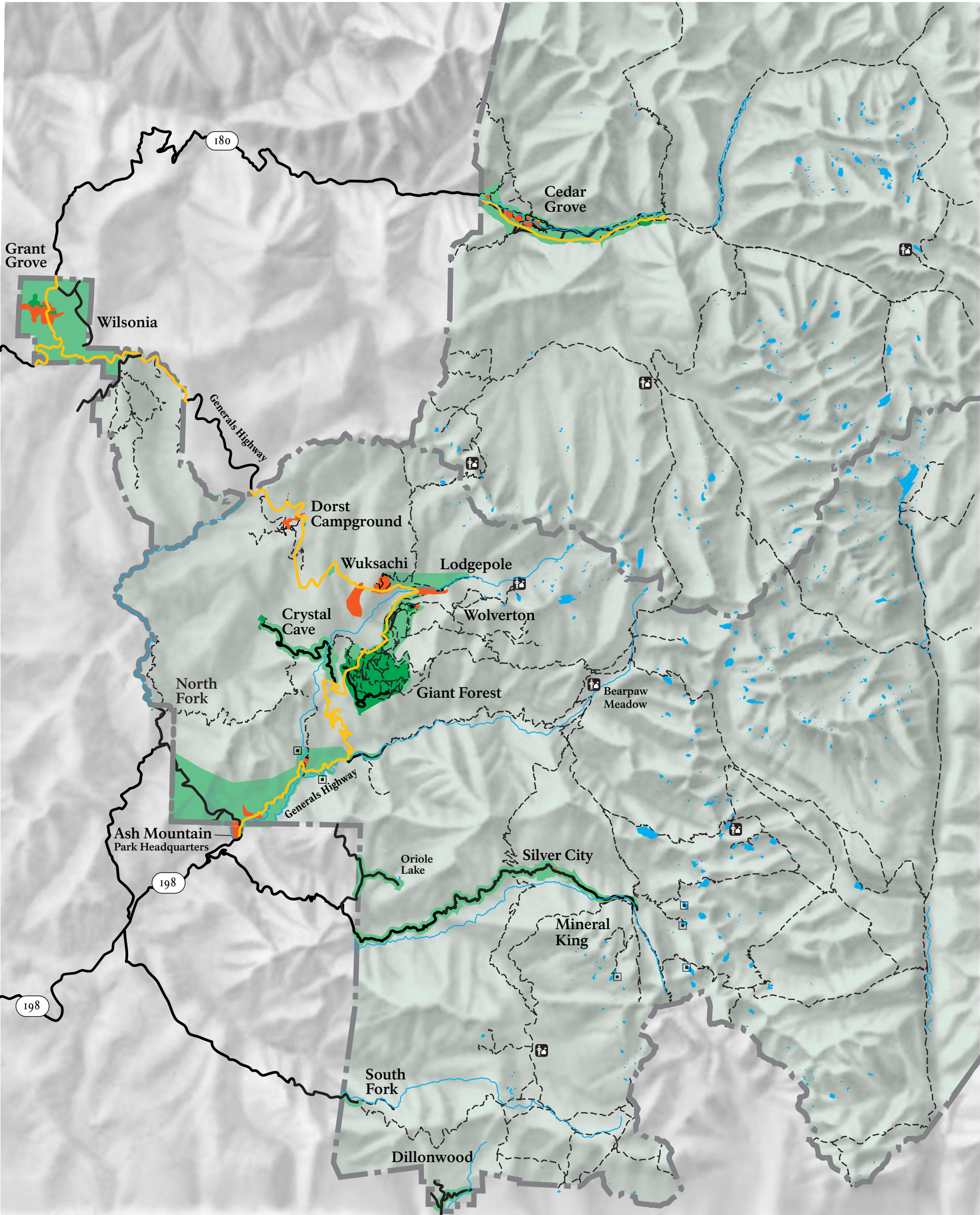
# PREFERRED ALTERNATIVE

## Sequoia & Kings Canyon National Park

May 2002 • DSC • 102 • 20,132

[This page intentionally left blank.]

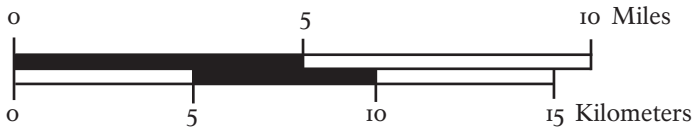
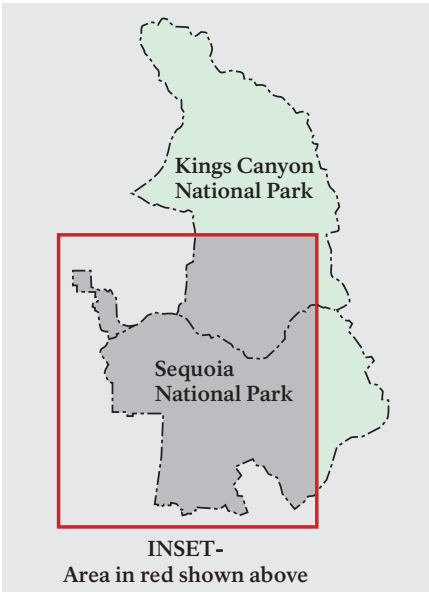




- Park Boundaries
- Lakes, Rivers and Streams
- - - Trails
- Roads
- Private Property
- Backcountry Ranger Stations
- Hydroelectric Utility Dams

- Management Prescriptions / Zones
- High Use Scenic Driving (Road corridor)
  - Development
  - High Use Frontcountry
  - Low Use Frontcountry\*
  - Backcountry

\* Low Use Frontcountry areas adjacent to roads enlarged for visibility

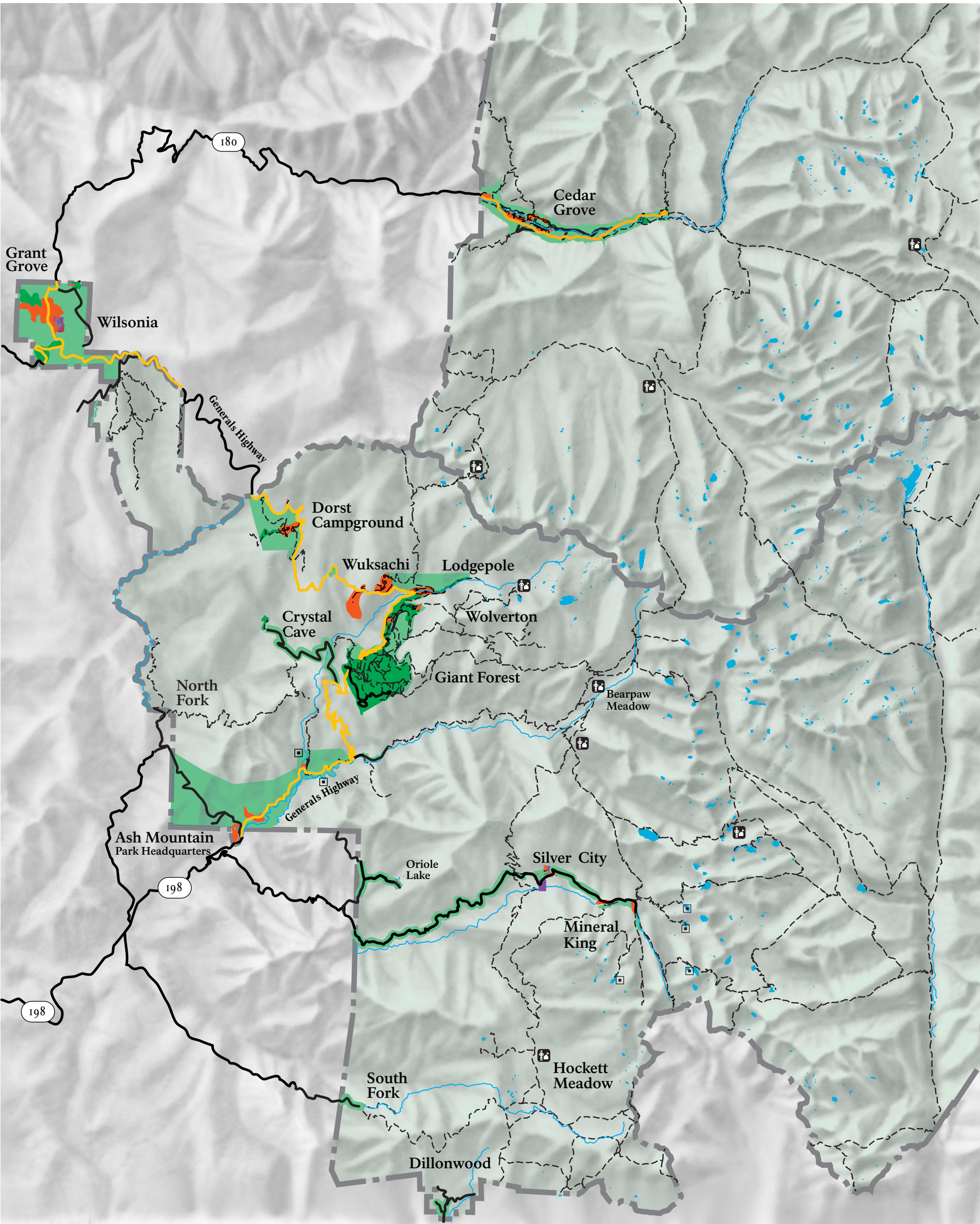


# ALTERNATIVE A

## Sequoia & Kings Canyon National Parks

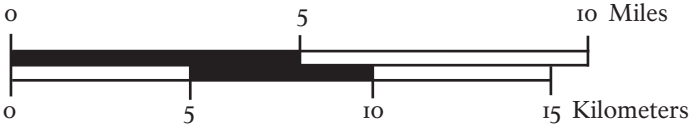
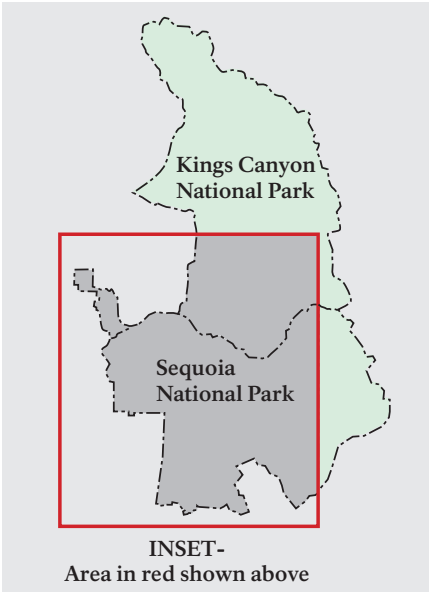
[This page intentionally left blank.]





- Park Boundaries
  - Lakes, Rivers and Streams
  - - - Trails
  - Roads
  - Private Property
  - Backcountry Ranger Stations
  - Hydroelectric Utility Dams
- Management Prescriptions / Zones**
- High Use Scenic Driving (Road corridor)
  - Development
  - High Use Frontcountry
  - Low Use Frontcountry\*
  - Backcountry

\* Low Use Frontcountry areas adjacent to roads enlarged for visibility



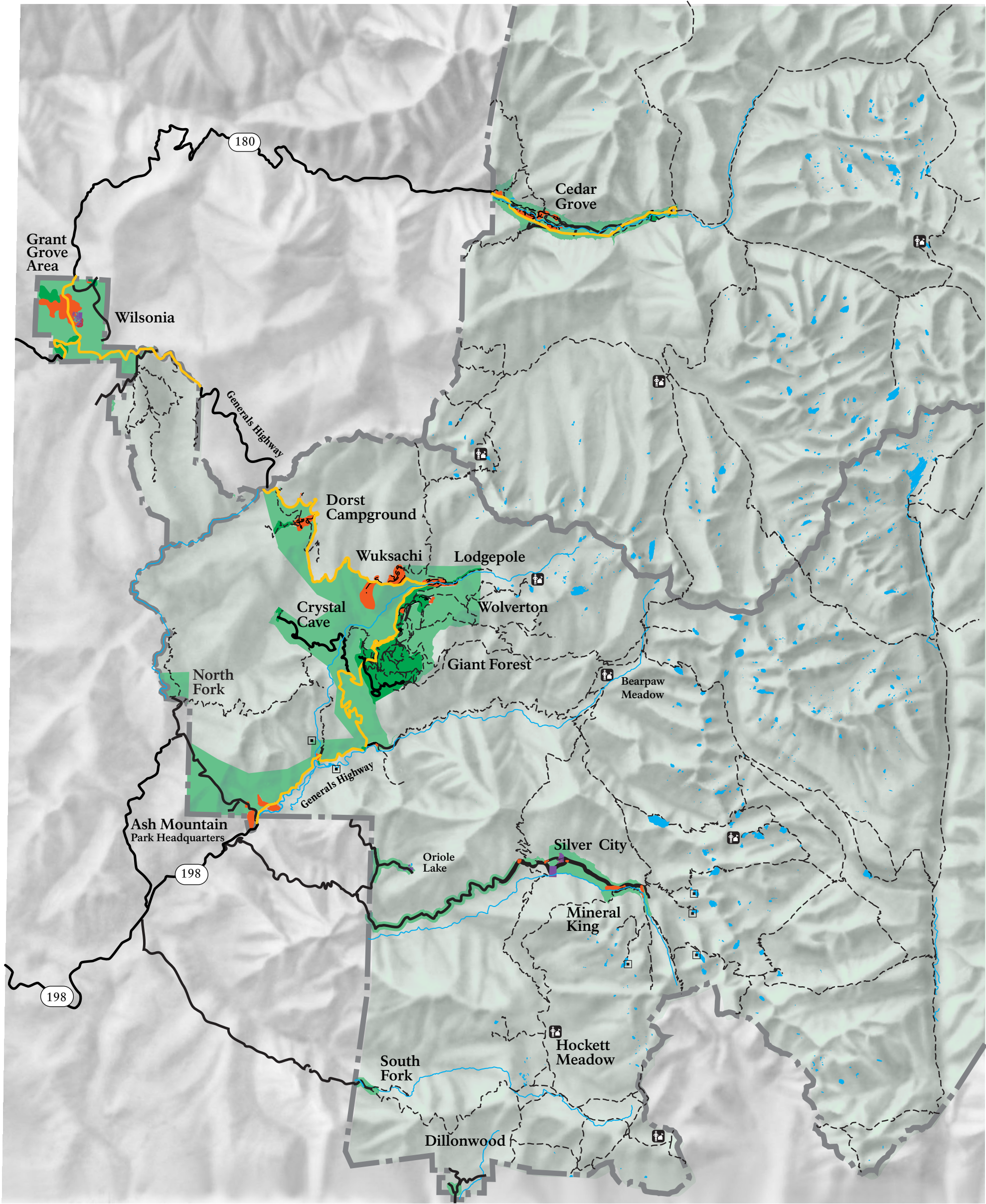
# ALTERNATIVE C

## Sequoia & Kings Canyon National Parks

May 2002 • DSC • 102 • 20,130

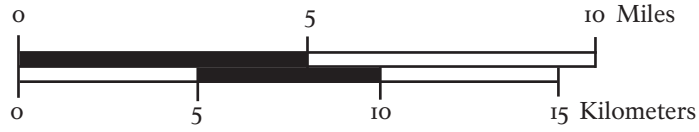
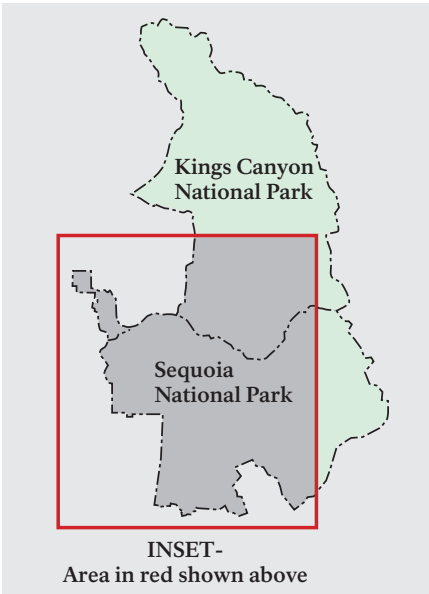
[This page intentionally left blank.]





- Park Boundaries
  - Lakes, Rivers and Streams
  - - - Trails
  - Roads
  - Private Property
  - 🏠 Backcountry Ranger Stations
  - ▣ Hydroelectric Utility Dams
- Management Prescriptions / Zones**
- High Use Scenic Driving (Road corridor)
  - Development
  - High Use Frontcountry
  - Low Use Frontcountry\*
  - Backcountry

\* Low Use Frontcountry areas adjacent to roads enlarged for visibility



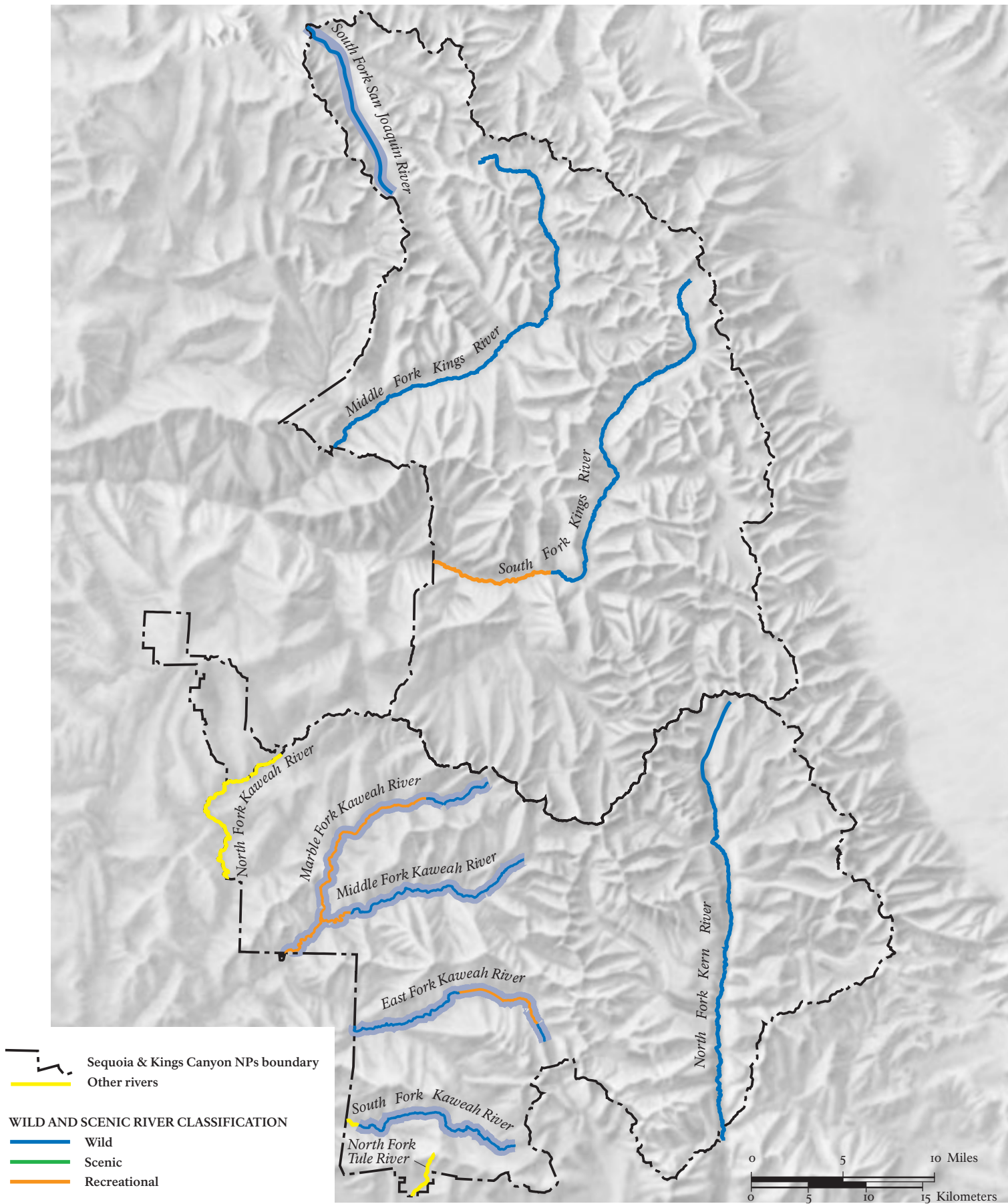
# ALTERNATIVE D

## Sequoia & Kings Canyon National Park

May 2002 • DSC • 102 • 20,131

[This page intentionally left blank.]





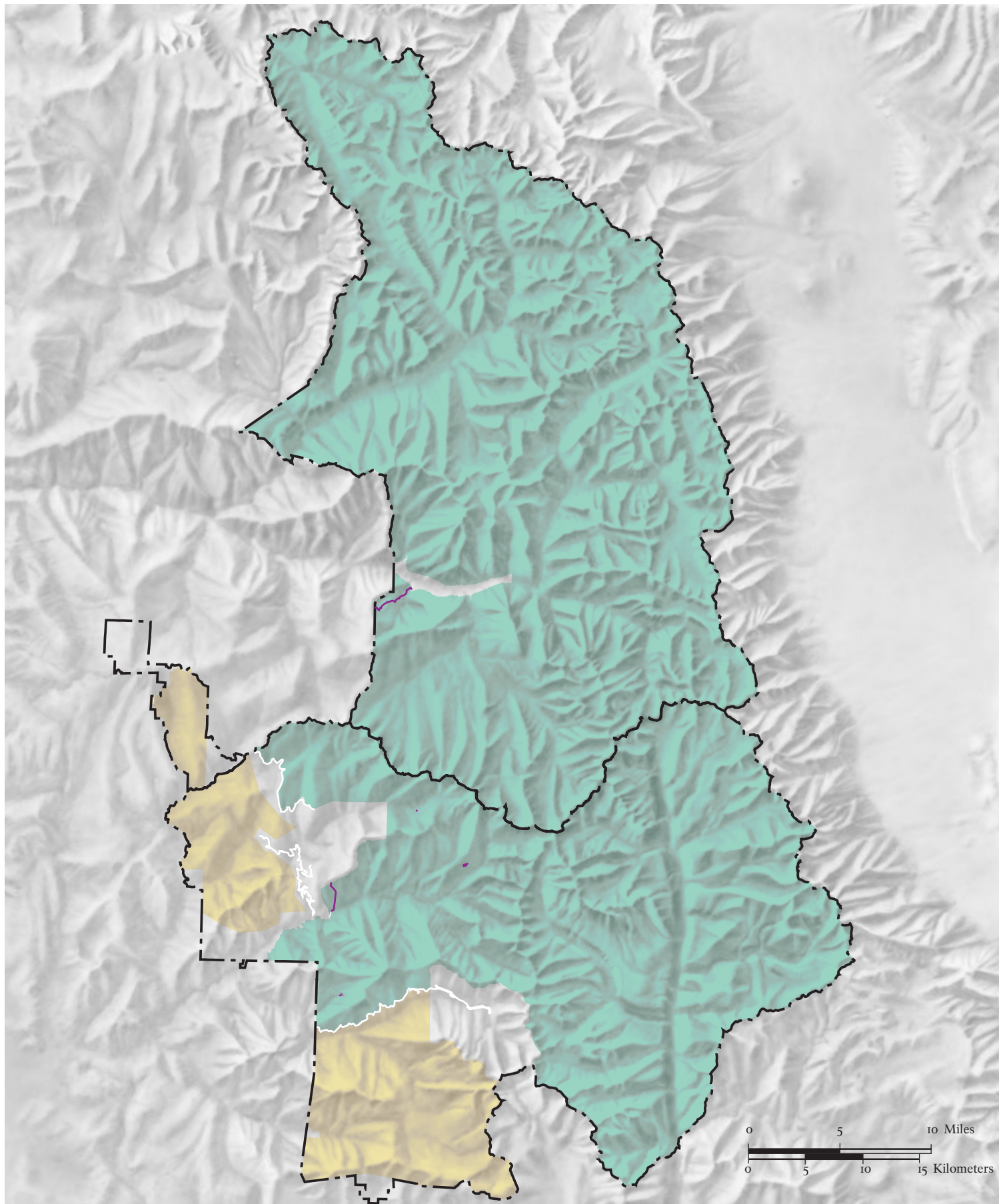
# WILD & SCENIC RIVERS

Sequoia & Kings Canyon National Parks

May 2002 • DSC • 102 • 20,129

[This page intentionally left blank.]





- Sequoia-Kings Canyon Wilderness
- Potential Wilderness
- Recommended Wilderness

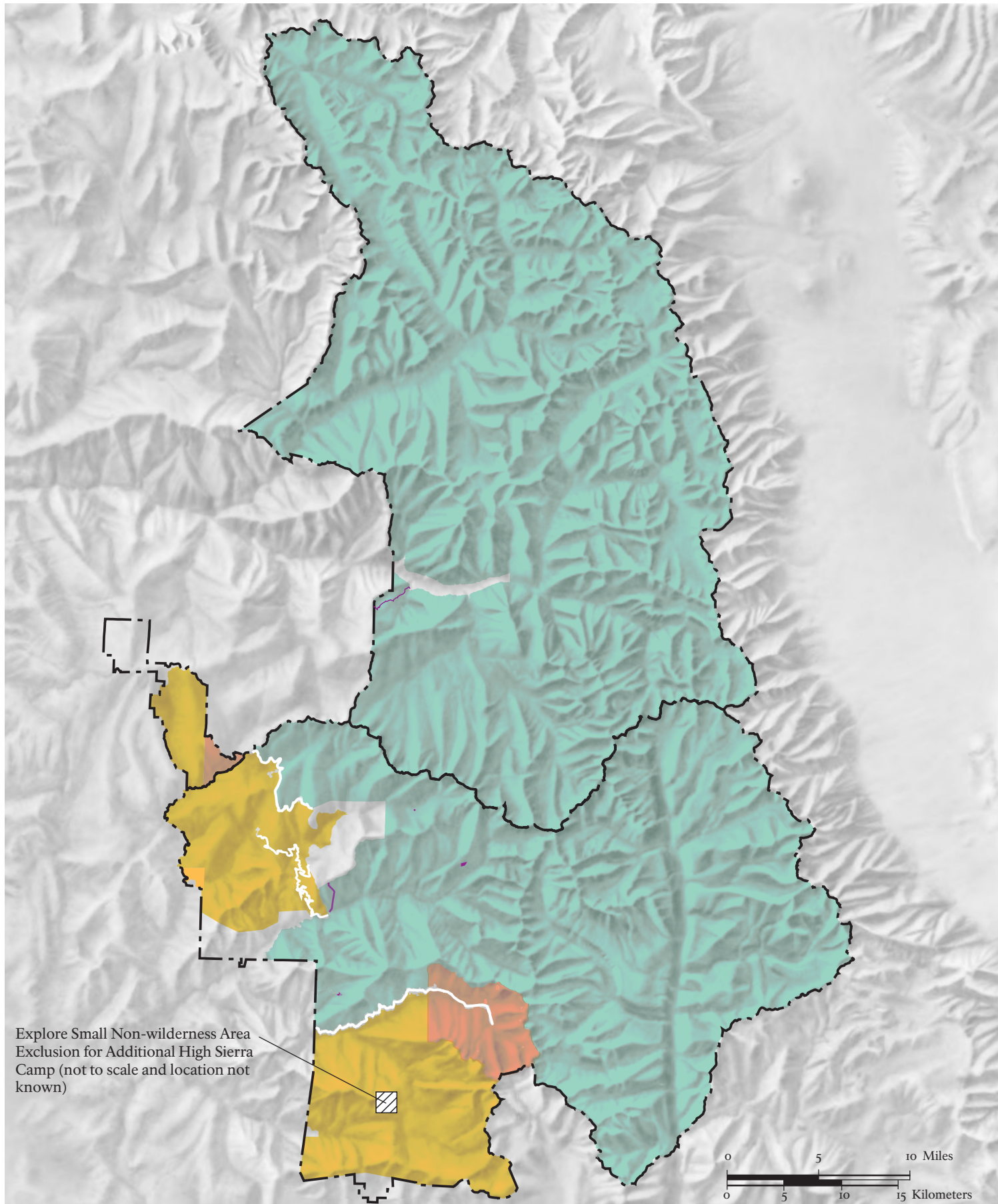
# EXISTING WILDERNESS No Action -Continue Current Management Backcountry/Wilderness

Sequoia & Kings Canyon National Parks

June 2003 • DSC • 102 • 20,129A

[This page intentionally left blank.]





Explore Small Non-wilderness Area  
Exclusion for Additional High Sierra  
Camp (not to scale and location not  
known)

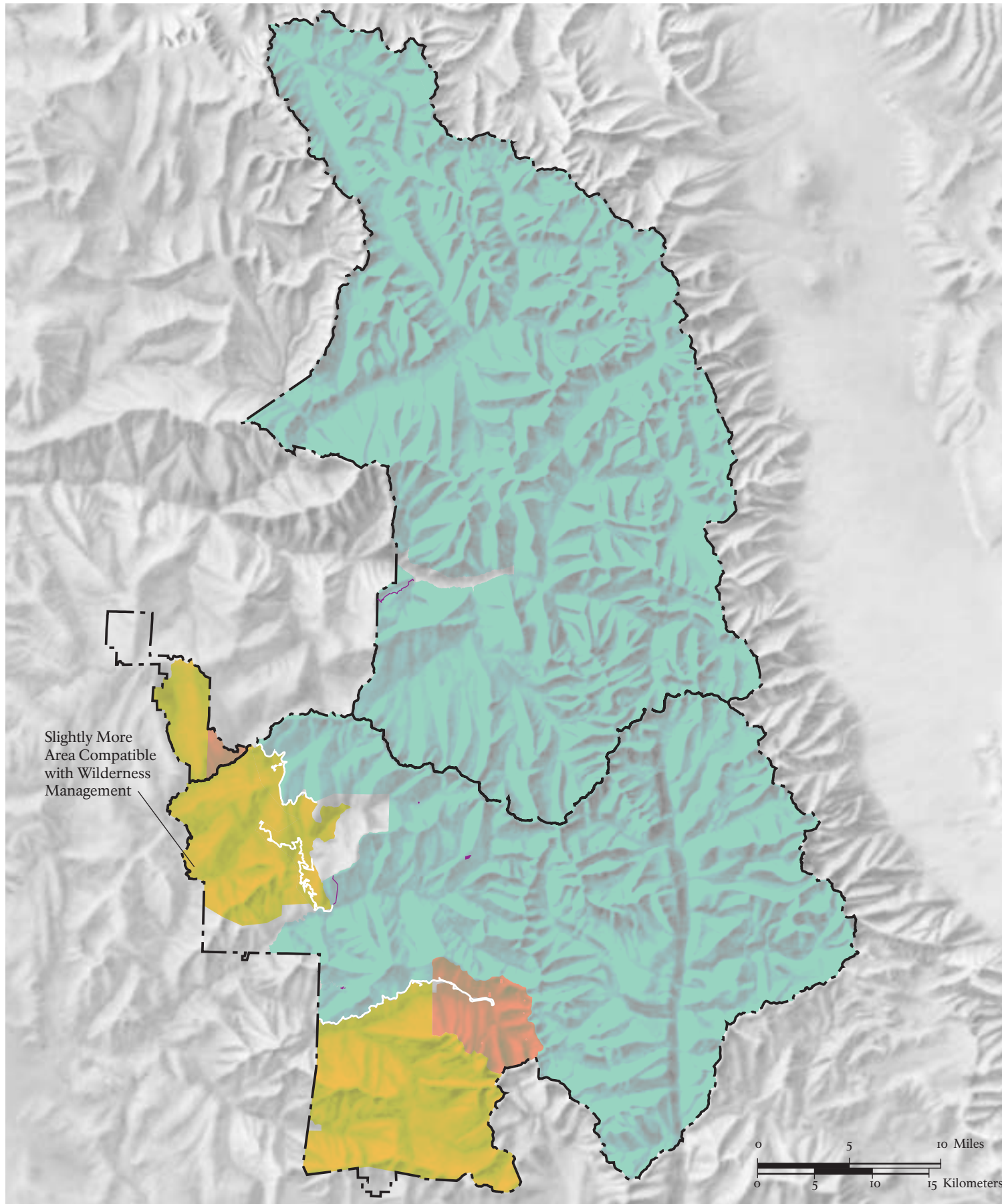
0 5 10 Miles  
0 5 10 15 Kilometers

- Sequoia-Kings Canyon Wilderness
- Potential Wilderness
- Compatible with Wilderness Management
- To Be Studied
- Non-wilderness Backcountry

**PREFERRED ALTERNATIVE**  
**Backcountry/Wilderness**  
Sequoia & Kings Canyon National Parks  
June 2003 • DSC • 102 • 20,129A

[This page intentionally left blank.]



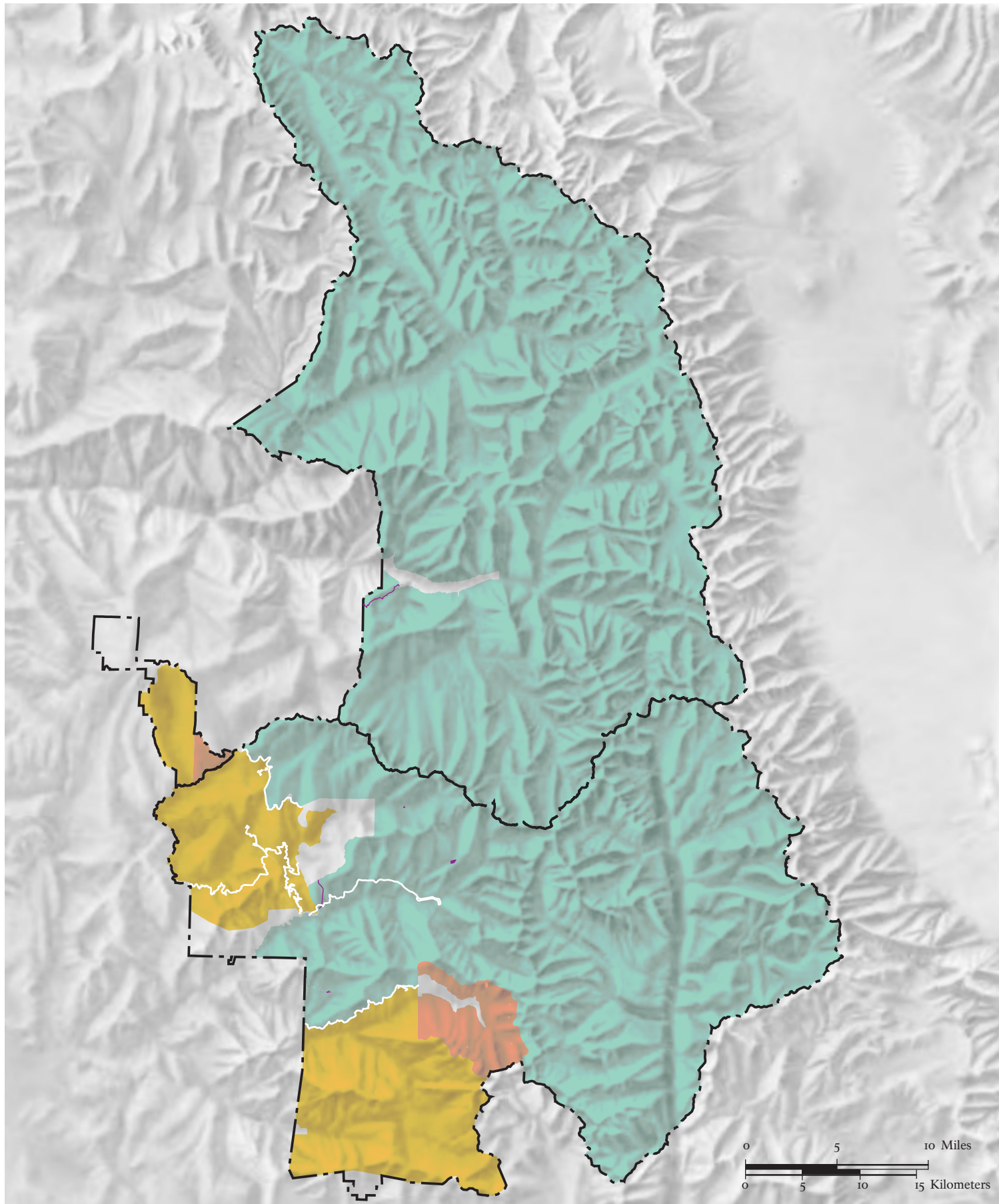


- Sequoia-Kings Canyon Wilderness
- Potential Wilderness
- Compatible with Wilderness Management
- To Be Studied

**ALTERNATIVE A**  
**Backcountry/Wilderness**  
Sequoia & Kings Canyon National Parks  
June 2003 • DSC • 102 • 20,129A

[This page intentionally left blank.]



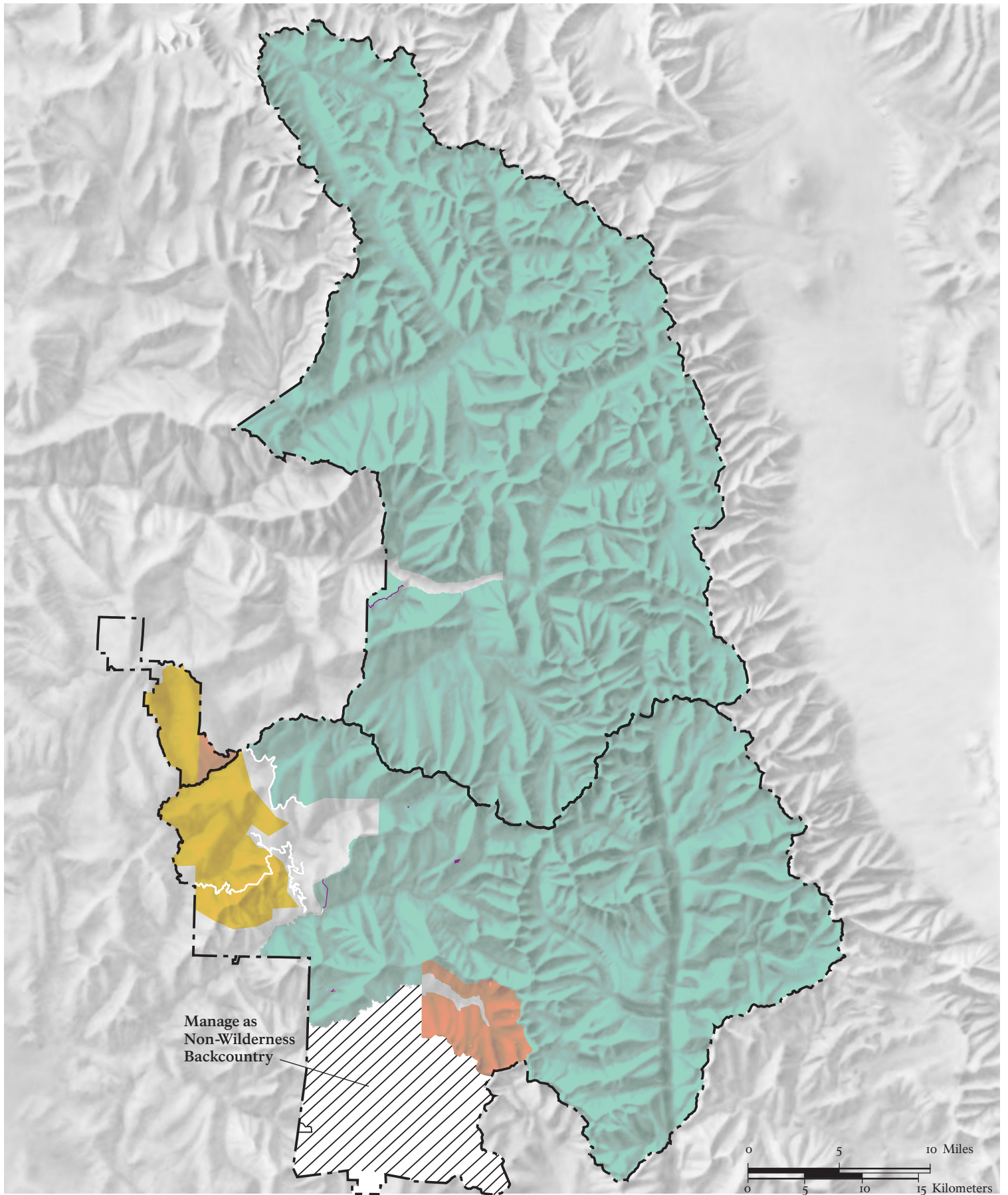







- Sequoia-Kings Canyon Wilderness
- Potential Wilderness
- Compatible with Wilderness Management
- To Be Studied

**ALTERNATIVE C**  
**Backcountry/Wilderness**  
Sequoia & Kings Canyon National Parks  
June 2003 • DSC • 102 • 20,129A

[This page intentionally left blank.]





-  Sequoia-Kings Canyon Wilderness
-  Potential Wilderness
-  Compatible with Wilderness Management
-  To Be Studied
-  Non-Wilderness Backcountry

## ALTERNATIVE D Backcountry/Wilderness

Sequoia & Kings Canyon National Parks  
June 2003 • DSC • 102 • 20,129A

[This page intentionally left blank.]