



White's Ferry Development Concept Plan

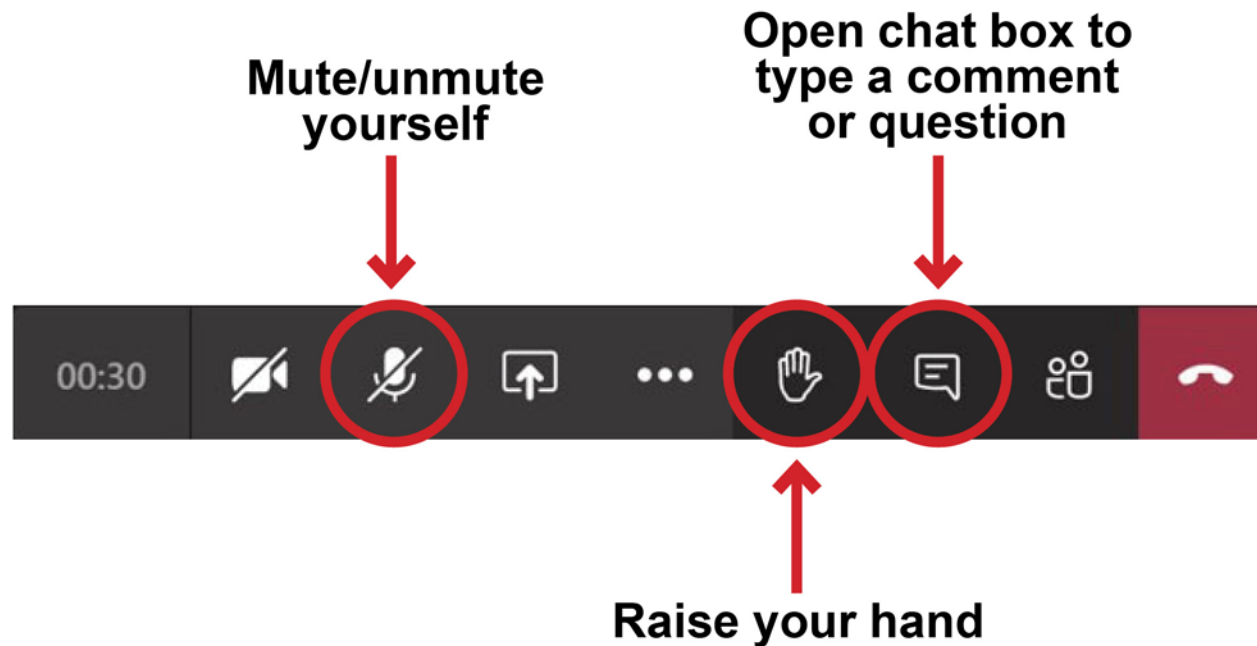
Public Meeting #1

May 11, 2022



Meeting Housekeeping

Please sign in to the meeting using the website link posted in the chat box.





Agenda

Welcome + Introductions

Meeting Purpose

Existing Conditions

Review of Initial Concepts

Questions + Answers

How to Submit Comments



Why is the NPS developing this Plan?

- In 1974, the National Park Service (NPS) acquired Tract 17-101. The White's Ferry Sportsman Club continuously occupied Tract 17-101 from before 1974 to 2021.
- The White's Ferry Sportsman Club has departed from Tract 17-101.
- The NPS now has the opportunity to look at Tract 17-101 and Tract 17-102 holistically and re-envision public use of the site in the future.
- The purpose of the Plan is to evaluate existing conditions and develop potential concepts for the future public use and enjoyment of the project site.
- The NPS will use the Plan, which will be made available to the public, to implement improvements to the area. The Plan is conceptual and is not a decision document.



Meeting Purpose + Goals

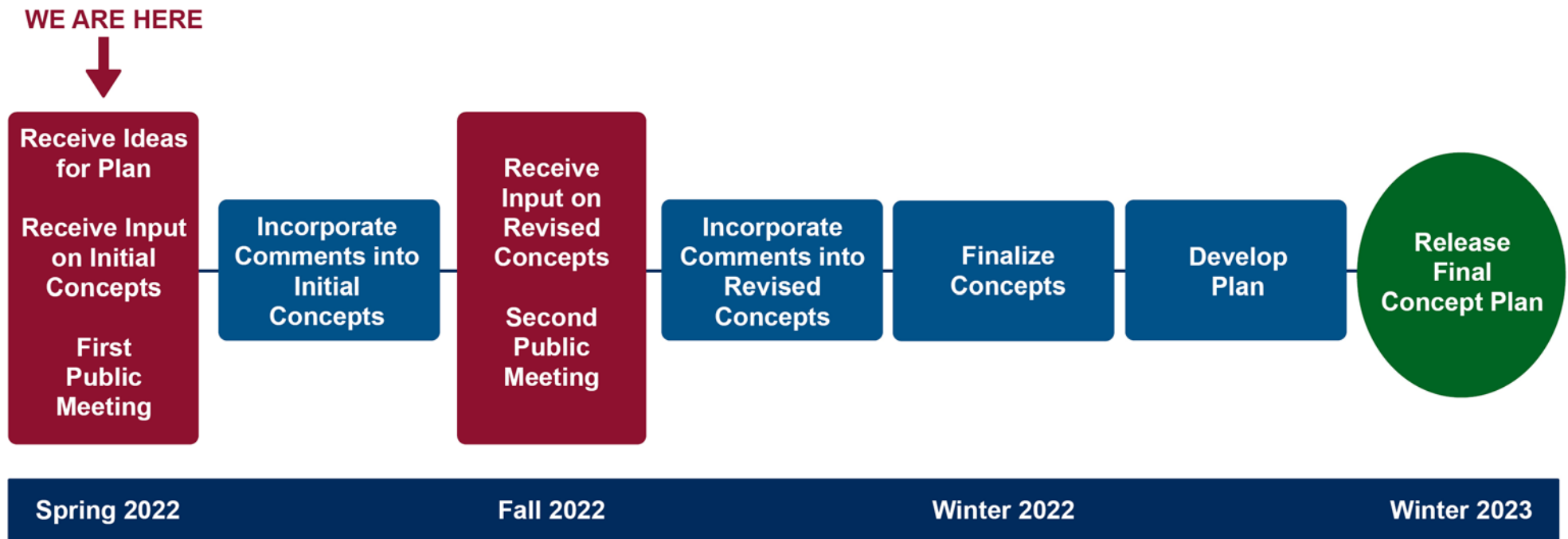
The purpose of this meeting is to provide the public with an opportunity to:

- Share their vision for the White's Ferry area of the park
- Provide feedback on an initial range of concepts
- Identify any issues, concerns, and ideas

After hearing from the public, the NPS will further refine the concepts.



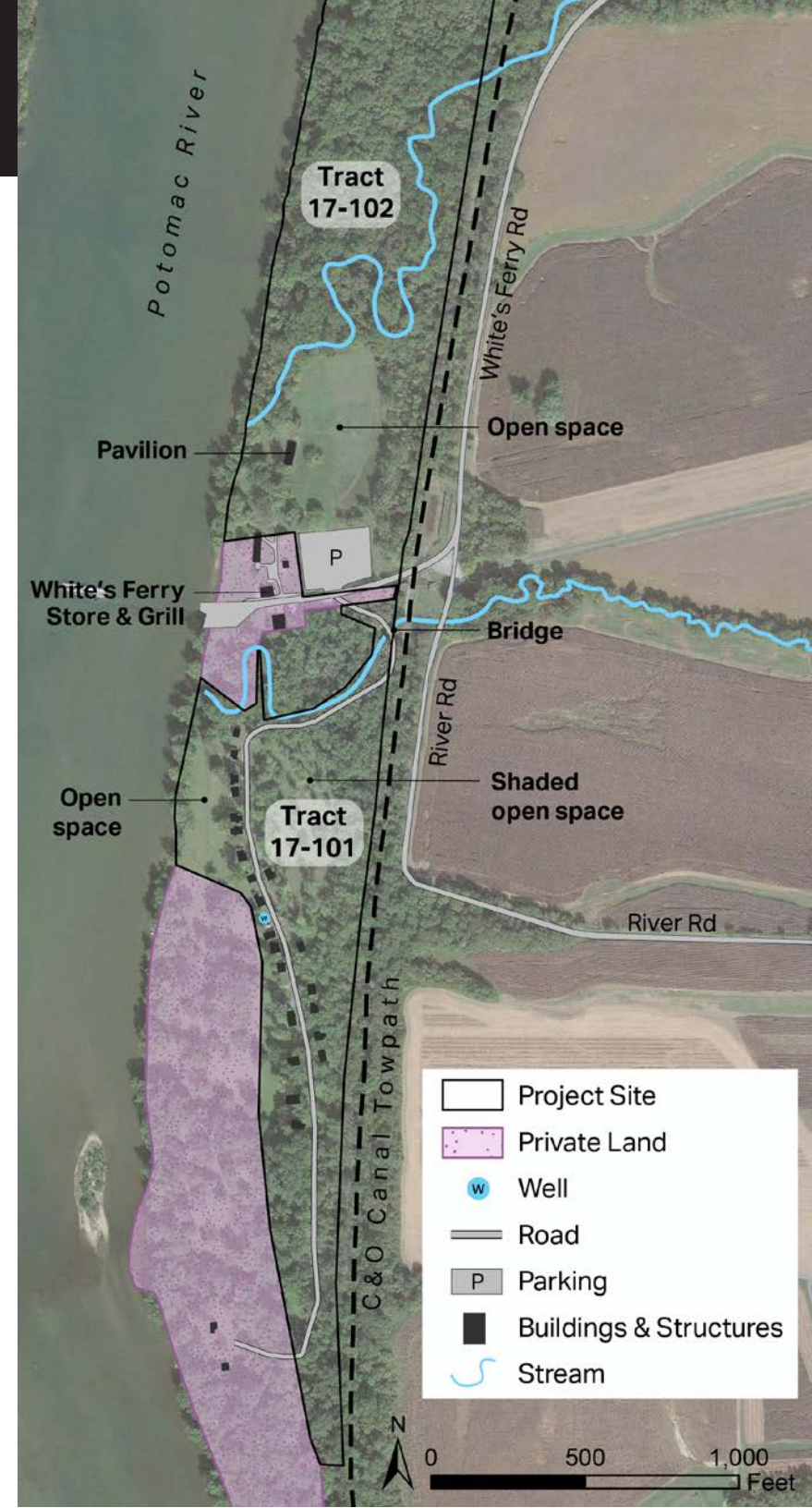
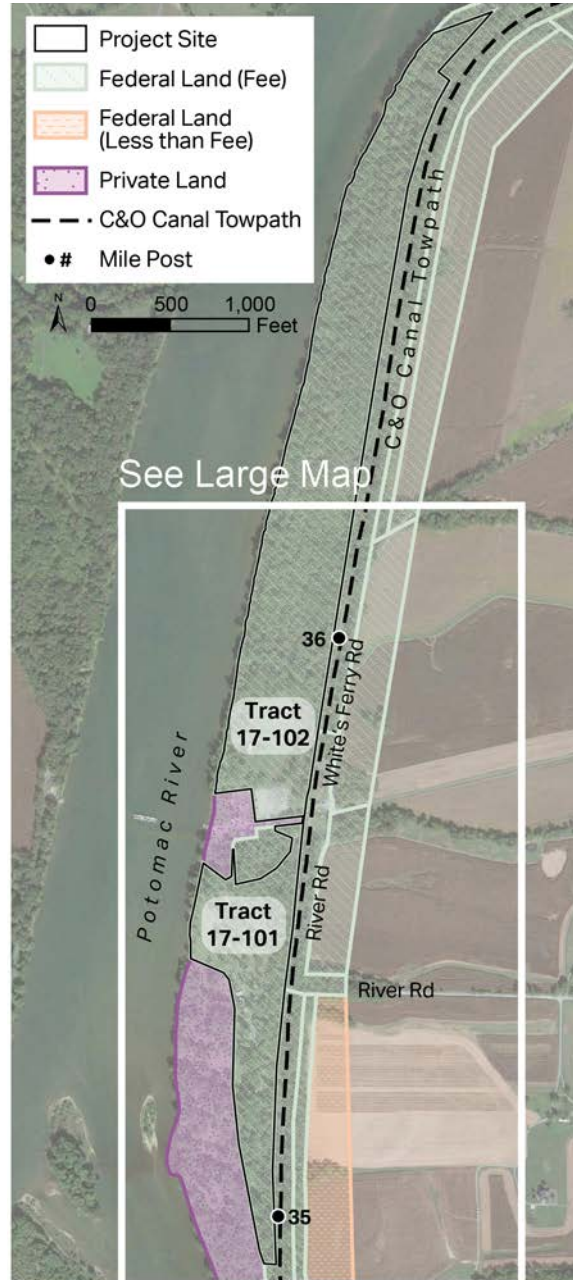
Project Timeline



The Development Concept Plan is conceptual and is not a decision document. The Plan provides recommendations for the NPS to consider when future proposals and decisions are being made. Prior to a decision, the NPS will conduct the National Environmental Policy Act (NEPA) and the National Historic Preservation Act (NHPA) Section 106 review processes as required.

Existing Conditions

- Part of Chesapeake and Ohio Canal National Historical Park
- Northern portion of site is 54 acres (Tract 17-102)
- Includes open space, pavilion, parking lot, and wooded areas
- Southern portion of site is 19 acres (Tract 17-101)
- Includes river access, drive, structures, and access to private lands
- No direct access to Canal towpath





Existing Conditions - North Tract



Pavilion and open space



Pavilion and open space



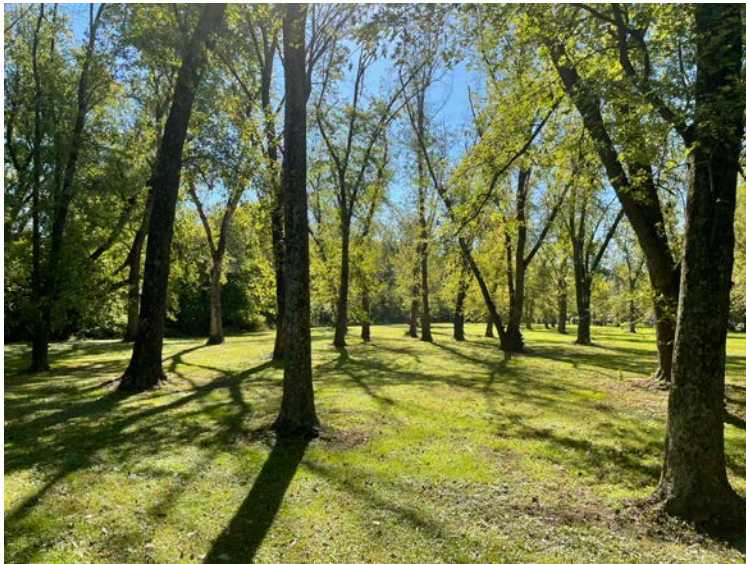
View from pavilion towards the Potomac River



Picnic area and parking lot



Existing Conditions - South Tract



Shaded open space



Access road



Potomac River access



Open space adjacent to the Potomac River

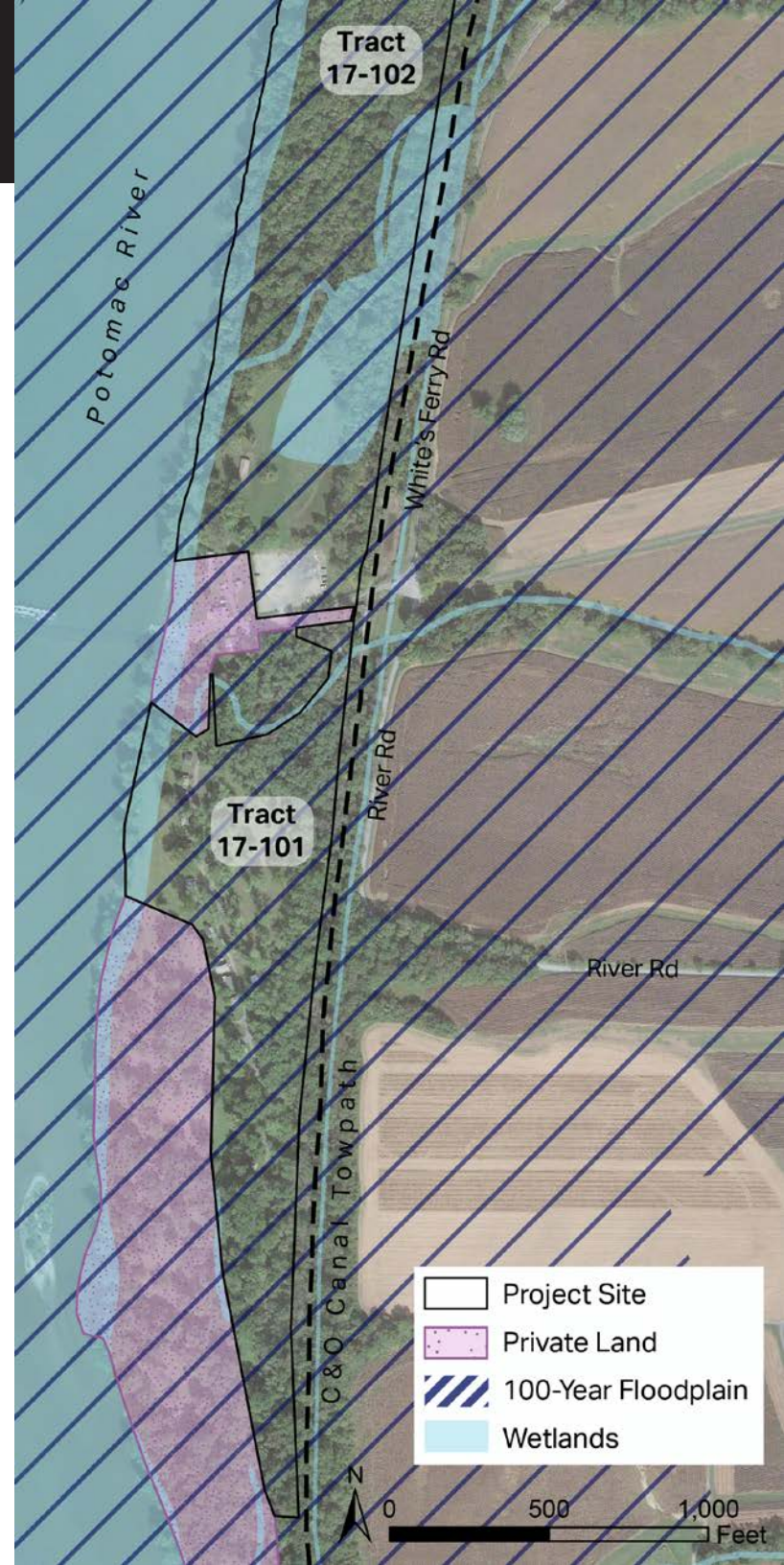
Floodplains and Wetlands



June 2018



White's Ferry Store & Grill





CHOH Foundation Document (2013)

Park Purpose

The purpose of the Chesapeake and Ohio Canal National Historical Park is to preserve and interpret the 19th century transportation canal from Washington, D.C., to Cumberland, Maryland, and its associated scenic, natural, and cultural resources; and to provide opportunities for education and appropriate outdoor recreation.



CHOH Foundation Document (2013)

Park Significance

- The Chesapeake and Ohio Canal National Historical Park **preserves and interprets 19th century canal transportation, civil engineering technology**, and the evolution of a flat water transportation system in support of the industrial growth of the nation.
- The Chesapeake and Ohio Canal National Historical Park contains **more than 1,300 historic structures**, including one of the largest collections of 19th century canal features and buildings in the national park system.
- The Chesapeake and Ohio Canal National Historical Park preserves **archeological evidence of 13,000 years** of human habitation along the Potomac River.
- Through preservation efforts that began in the 1950s, the Chesapeake and Ohio Canal National Historical Park towpath was transformed into **one of the most heavily used recreational trails in the nation** and serves as the backbone for national and regional trail systems.



CHOH Foundation Document (2013)

Park Significance (continued)

- The Chesapeake and Ohio Canal National Historical Park provides **diverse recreational opportunities** for millions of visitors annually, including numerous access points to the Potomac River, ranging from urban to rural settings.
- The 15-mile-long Potomac Gorge, managed in part by the Chesapeake and Ohio Canal National Historical Park, is one of the **most biologically diverse natural areas** in the national park system.
- Paralleling the Potomac River for 184.5 miles and traveling through four physiographic provinces, Chesapeake and Ohio Canal National Historical Park provides a **natural buffer of forest, woodlands, prairies, and barrens and a wildlife corridor** along the second-largest tributary to the Chesapeake Bay.
- Interpretive and educational opportunities **engage a diverse cross section of urban and rural communities** along the length of the Chesapeake and Ohio Canal National Historical Park and were envisioned in the park's enabling legislation.



Nearby Camping

- 35.5 Mile Marker (MM) - White's Ferry

Nearby hiker-biker campsites (shown on map)

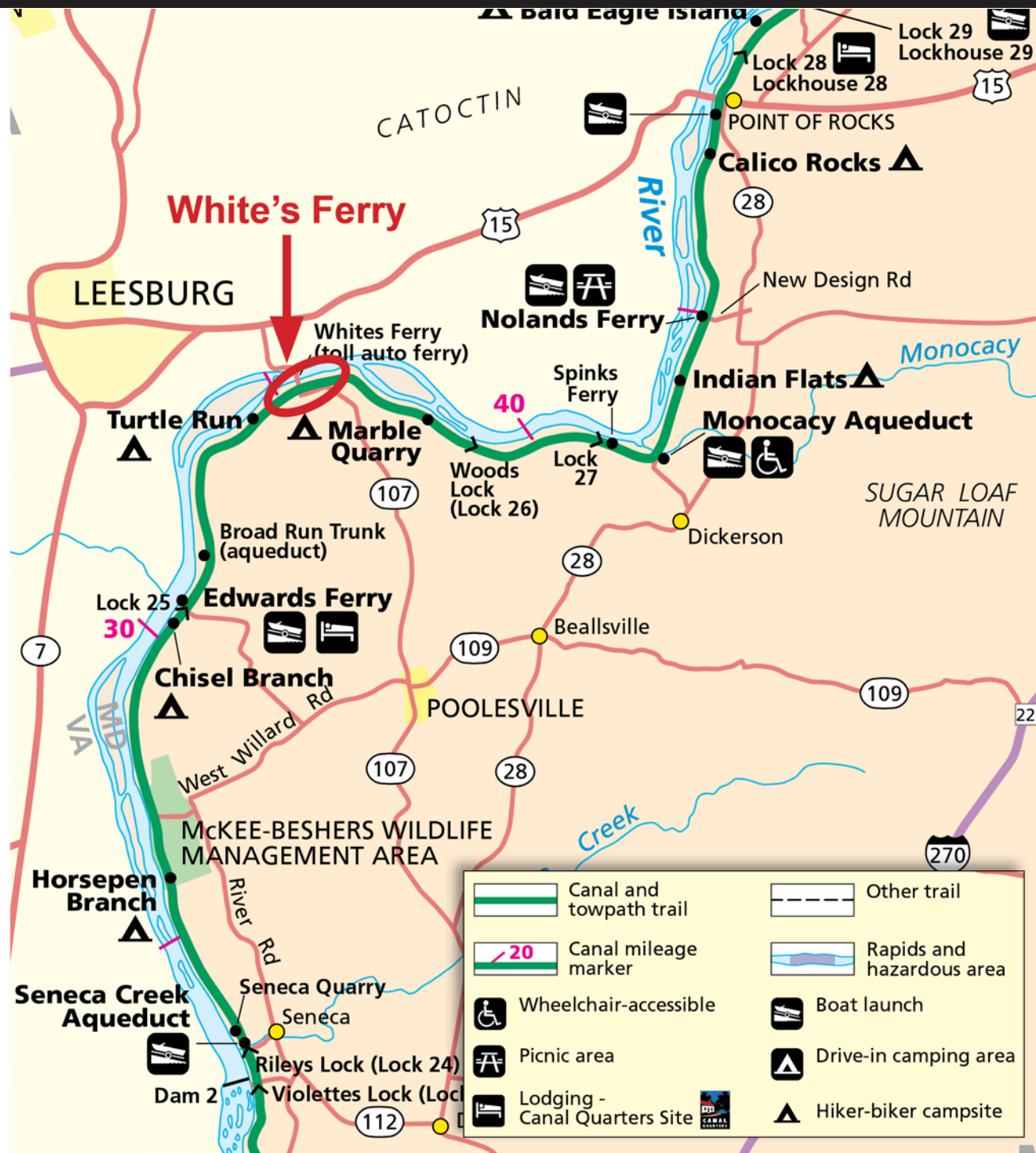
- 47.6 MM - Calico Rocks
- 42.5 MM - Indian Flats
- 38.2 MM - Marble Quarry
- 34.3 MM - Turtle Run
- 30.5 MM - Chisel Branch
- 26.1 MM - Horsepen Branch

Closest drive-in campground (not shown on map)

- 69.6 MM - Antietam Creek

Closest group campground (not shown on map)

- 11 MM - Marsden Tract





North Concepts Overview

All concept options provide:

- Changes to the existing pavilion
- Forest buffer
- Options for the existing open area east of the pavilion, including:
 - Agricultural use
 - Open gathering area for informal recreation
 - Meadow
- Mix and match opportunities



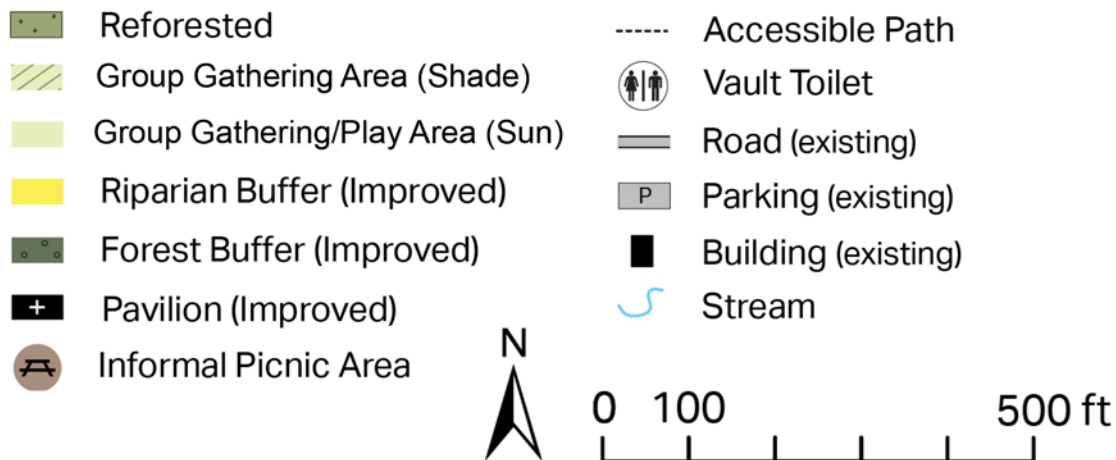
Concept A: Recreational *North*

Facilities

- Repairs and upgrades existing pavilion
- Provides shaded group gathering area
- Provides open group gathering area for informal recreation
- Adds restrooms and informal picnic areas
- Adds reforestation area at northern end of open gathering area
- Improves forest buffer at southwest portion of site
- Improves riparian buffer along Potomac River and stream

Operations

- Generates revenue through pavilion rental
- Requires mowing
- Potential cooperative agreement for restrooms and maintenance





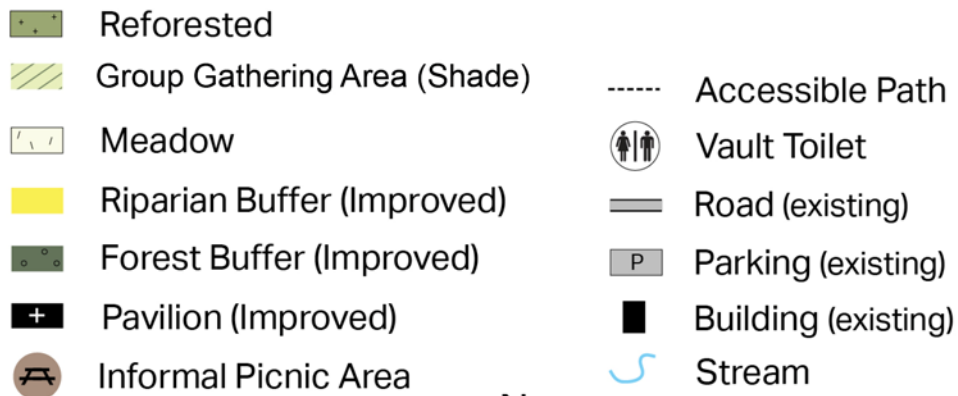
Concept B: Ecological *North*

Facilities

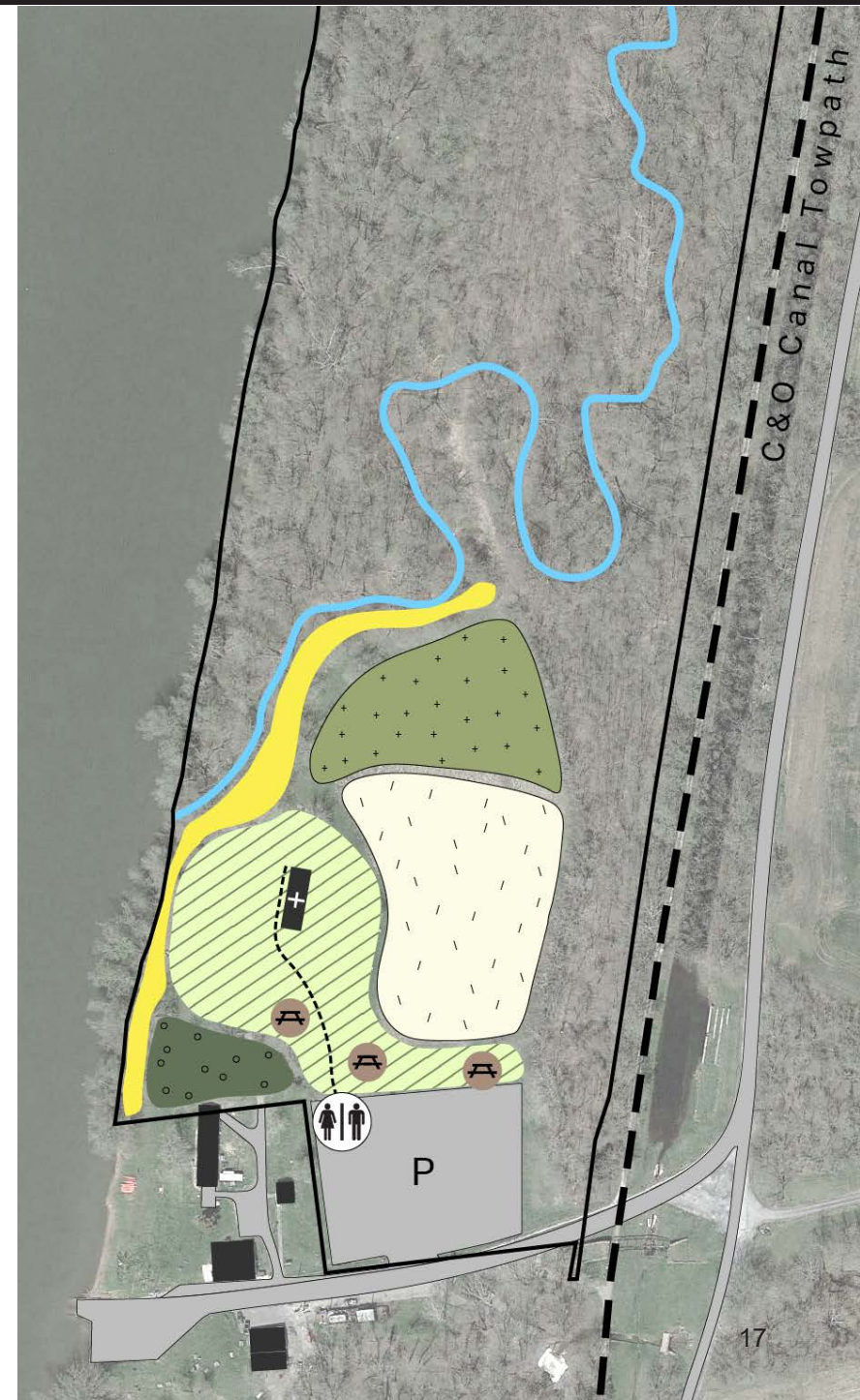
- Repairs and upgrades existing pavilion
- Provides shaded group gathering area
- Converts open turf to meadow
- Installs interpretive signage (e.g., local ecology and history)
- Adds restrooms and informal picnic areas
- Adds reforestation area at northern end of meadow
- Improves forest buffer at southwest portion of site
- Improves riparian buffer along Potomac River and stream

Operations

- Requires biannual mowing
- Potential cooperative agreement for restrooms and maintenance



0 100 500 ft





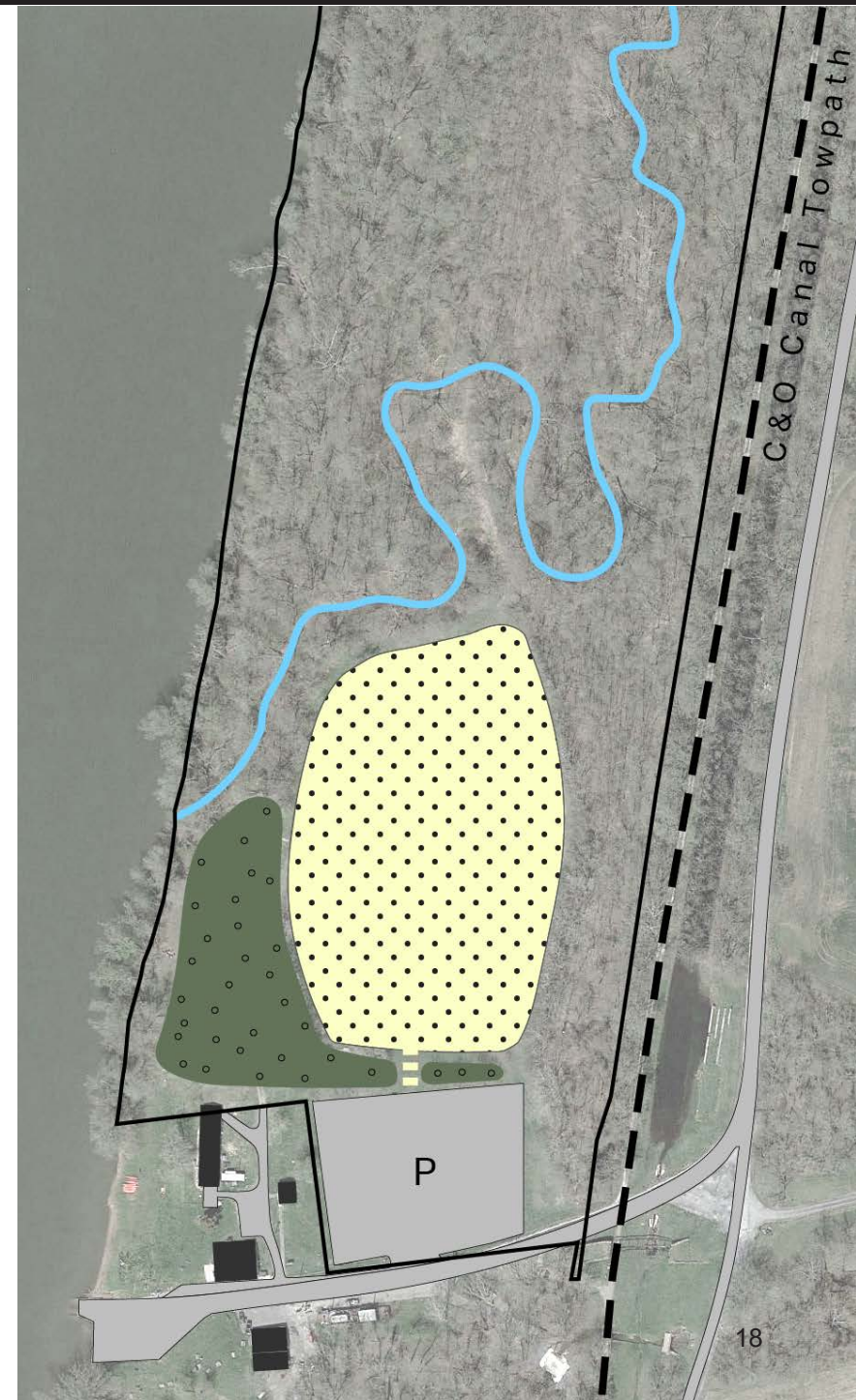
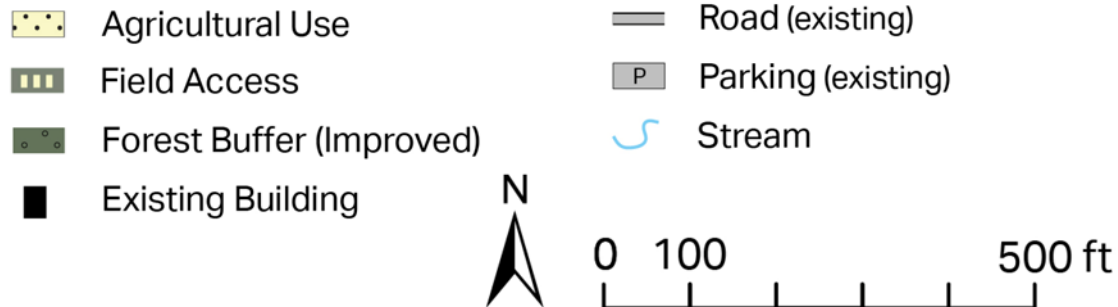
Concept C: Agricultural *North*

Facilities

- Removes existing pavilion
- Converts open turf to agricultural use (~ 3.6 acres)
- Improves forest buffer at southwest portion of site

Operations

- Potential for agricultural leasing program
- Minimizes NPS maintenance responsibility



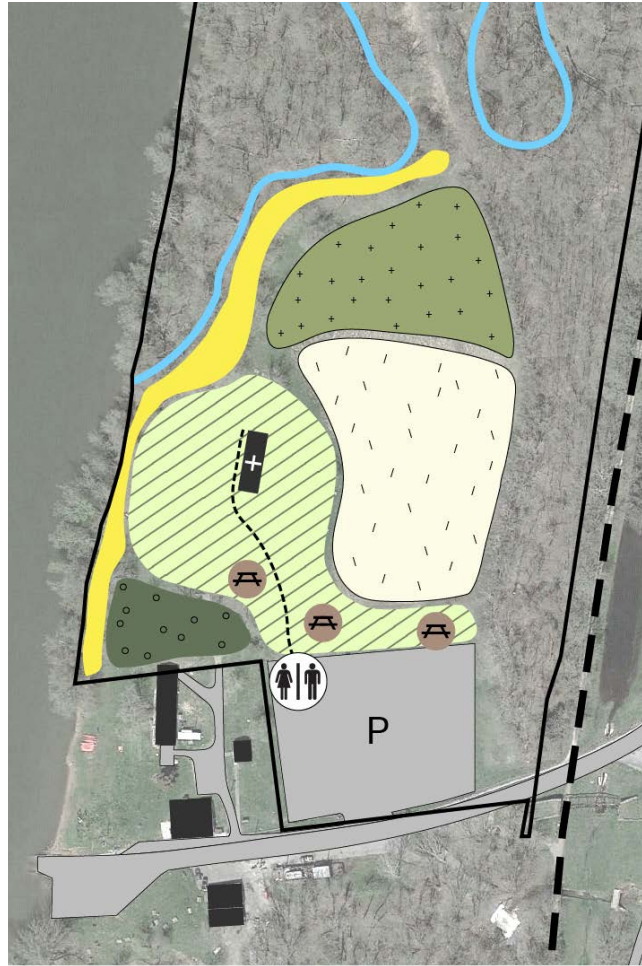


A: Recreational



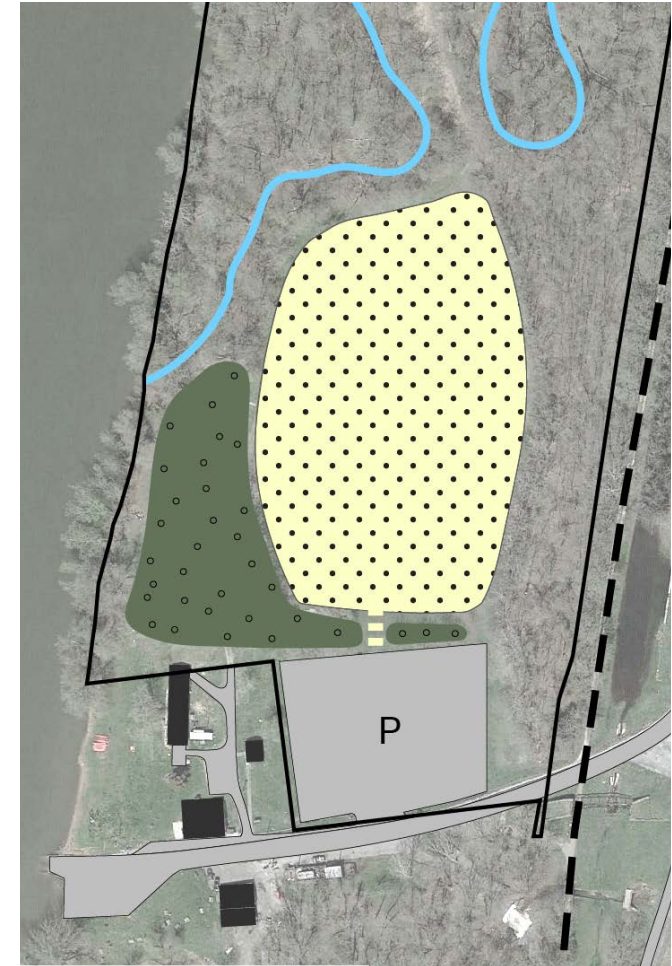
- | | |
|---------------------------------|----------------------|
| Reforested | Informal Picnic Area |
| Group Gathering Area (Shade) | Accessible Path |
| Group Gathering/Play Area (Sun) | Vault Toilet |
| Riparian Buffer (Improved) | Road (existing) |
| Forest Buffer (Improved) | Parking (existing) |
| Pavilion (Improved) | Building (existing) |
| | Stream |

B: Ecological



- | |
|------------------------------|
| Reforested |
| Group Gathering Area (Shade) |
| Meadow |
| Riparian Buffer (Improved) |

C: Agricultural



- | |
|--------------------------|
| Agricultural Use |
| Field Access |
| Forest Buffer (Improved) |



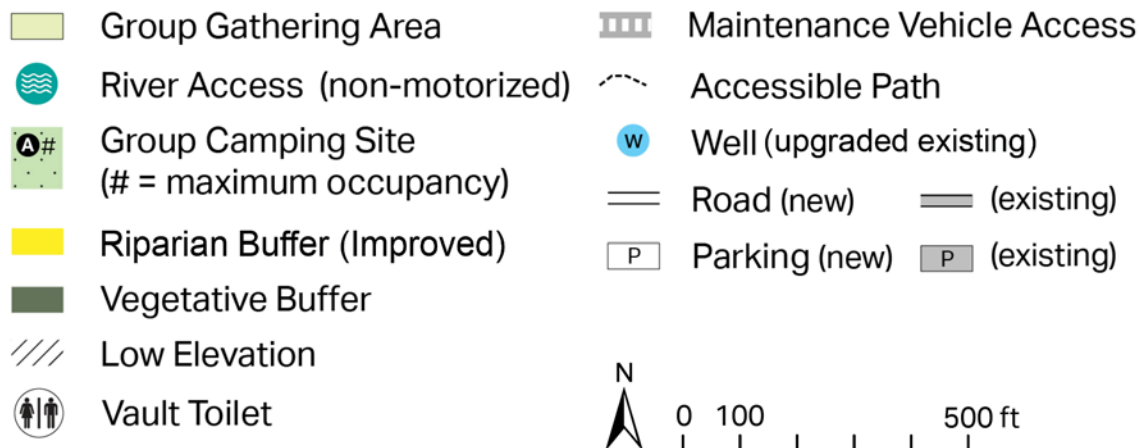
South Concepts Overview

All concepts provide:

- Camping sites, with options for:
 - Tent camping
 - Single large or multiple groups
- Parking
- Pavilion(s) with option to be open-air or an enclosed building
- Vault toilets
- Well access
- Options for open or shaded space for group gathering
- Non-motorized boat launch/fishing pier
- Trail connection to the C&O Canal Towpath
- Mix and match opportunities

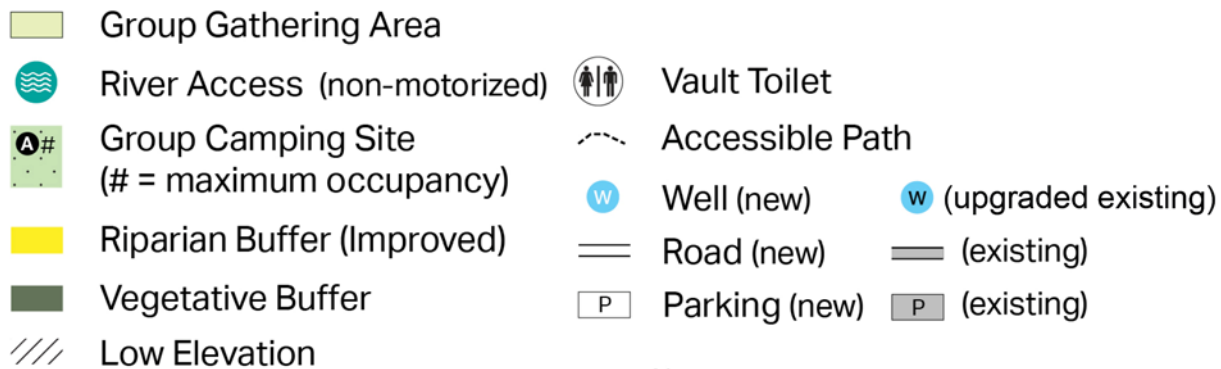
Concept A: Clustered *South*

- Installs tent camping sites for four groups, including one accessible site (Site A)
- Contains one primary parking area and two secondary parking areas
- Provides mown open space for group gathering/informal recreation adjacent to the river
- Provides shaded group gathering area
- Adds non-motorized boat launch/fishing pier
- Uses single existing well
- Includes fire ring, area for tents, and picnic tables at each group camp site
- Adds three vault toilets away from river
- Precludes RV/camper parking

















Concept B: Concentrated *South*

- Adds four group campgrounds, all of which are accessible
- Includes individual parking, restroom, and water facilities for campgrounds
- Adds drive to river access point for non-motorized watercraft
- Includes fire rings, area for tents, and picnic tables at each group camp site
- Precludes RV/camper parking



Concept C: Dispersed *South*

- Installs three group camping sites, including one accessible site (Site B)
- Offers a restroom for each camping site
- Reforests area adjacent to river to provide shaded group gathering area
- Adds non-motorized boat launch/fishing pier
- Includes fire rings, area for tents, and picnic tables at each group camp site
- Precludes RV/camper parking

- | | | | |
|--|---|--|----------------------------|
|  | River Access (non-motorized) |  | Vault Toilet |
|  | Group Camping Site
(# = maximum occupancy) |  | Maintenance Vehicle Access |
|  | Riparian Buffer (Improved) |  | Accessible Path |
|  | Vegetative Buffer |  | Well (upgraded existing) |
|  | Reforested |  | Road (new) |
|  | Low Elevation |  | Road (existing) |
| | |  | Parking (new) |
| | |  | Parking (existing) |





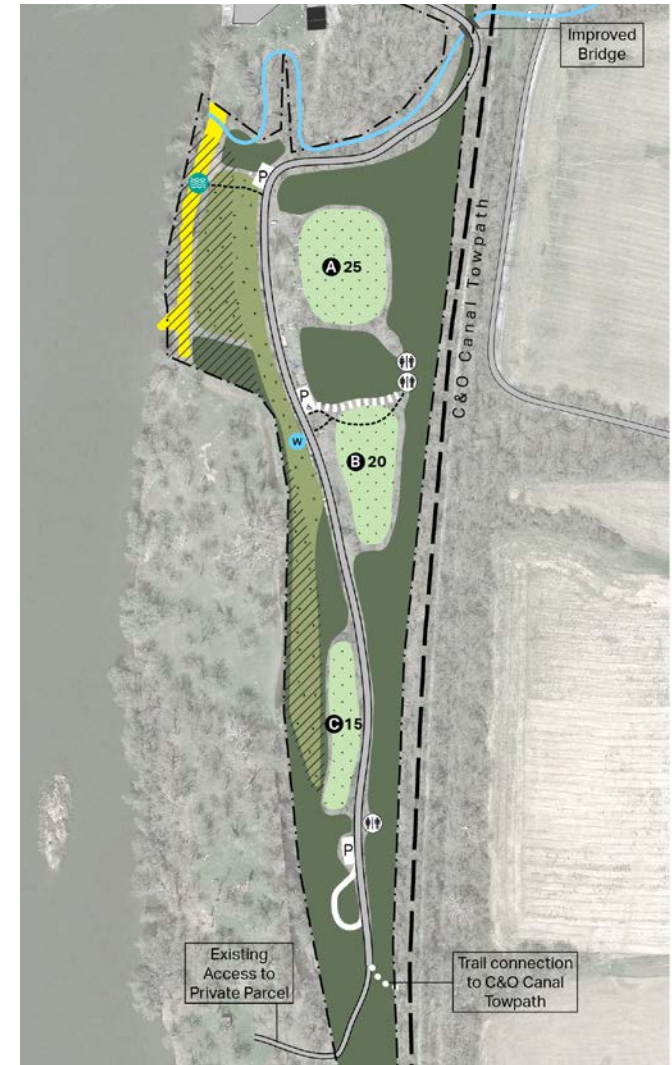
A: Clustered



B: Concentrated



C: Dispersed



- | | |
|---|----------------------------|
| Group Gathering Area | Vault Toilet |
| River Access (non-motorized) | Maintenance Vehicle Access |
| Group Camping Site
(# = maximum occupancy) | Accessible Path |
| Riparian Buffer | Well (upgraded existing) |
| Vegetative Buffer | Road (new) (existing) |
| Low Elevation | Parking (new) (existing) |

Well (new)

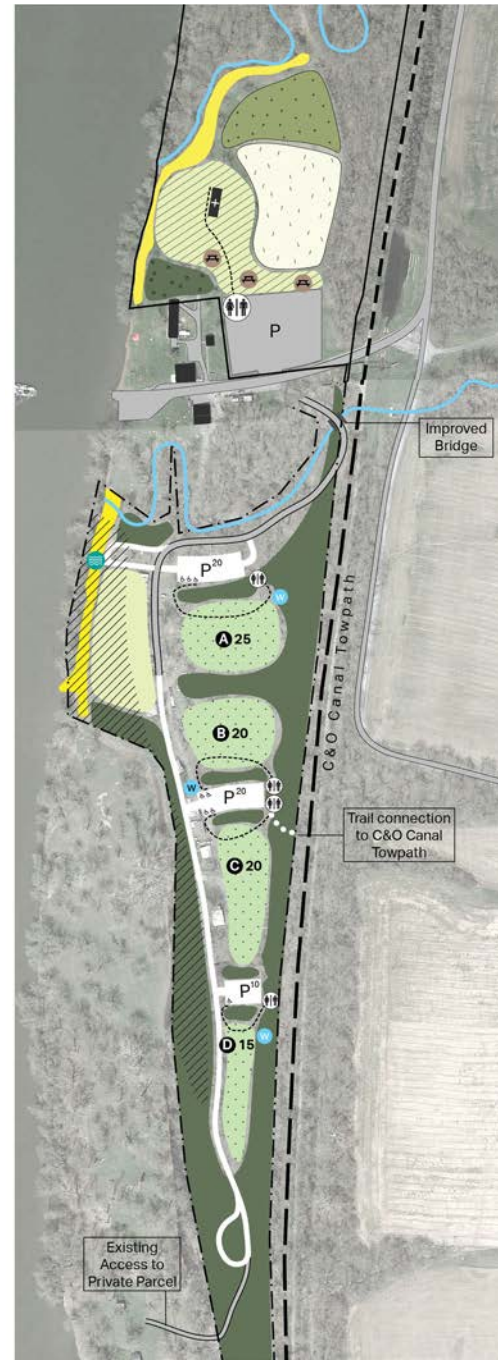
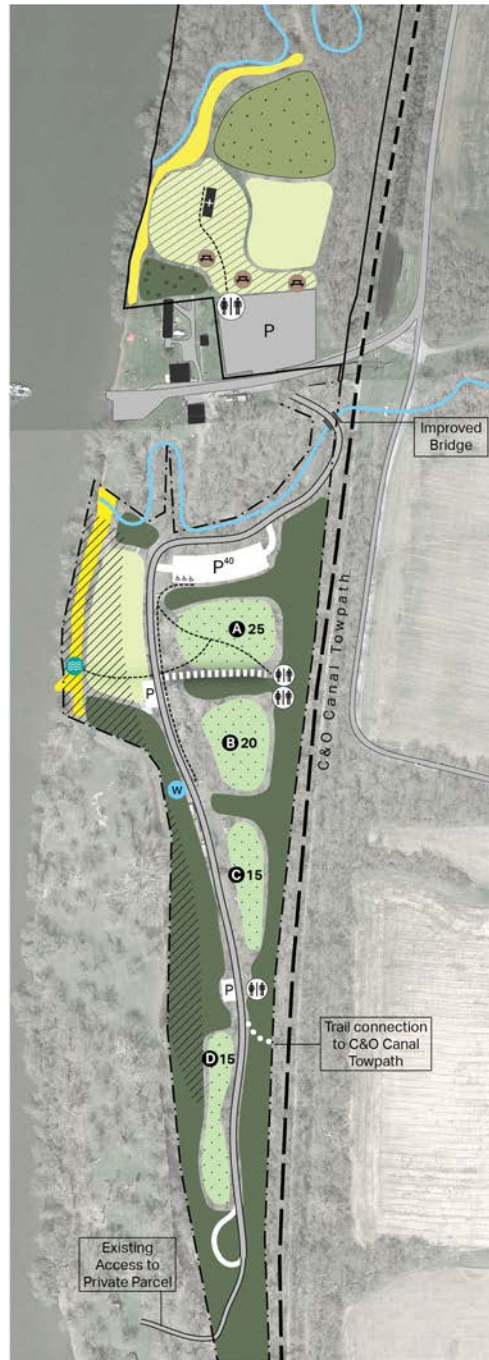
Reforested



A: Recreational + Clustered

B: Ecological + Concentrated

C: Agricultural + Dispersed

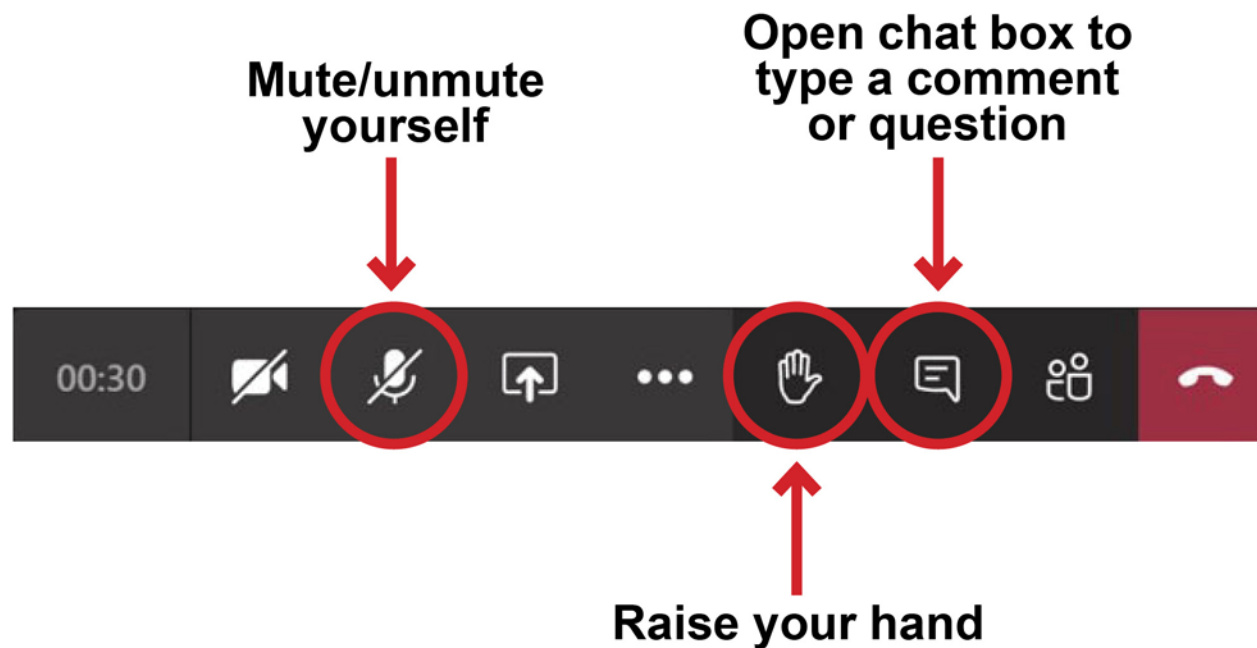


The North and South concepts are interchangeable with one another.

For example, North Concept A could be paired with South Concept C.



Questions + Answers





How Can You Submit Comments?

- **Online:** Submit written comments by **June 11th** at <https://parkplanning.nps.gov/whitesferryconceptplan>
- **Written comments can be mailed to:**

Superintendent
Attn: White's Ferry DCP
National Park Service
Chesapeake and Ohio Canal National Historical Park
142 West Potomac Street
Williamsport, MD 21795
- **Mailed comments** must be postmarked by **June 11th** to receive consideration

Please Note: Before including your address, phone number, e-mail address, or other personal identifying information in your comment, you should be aware that your entire comment – including your personal identifying information – may be made publicly available at any time. While you can ask us in your comment to withhold your personal identifying information from public review, we cannot guarantee that we will be able to do so.