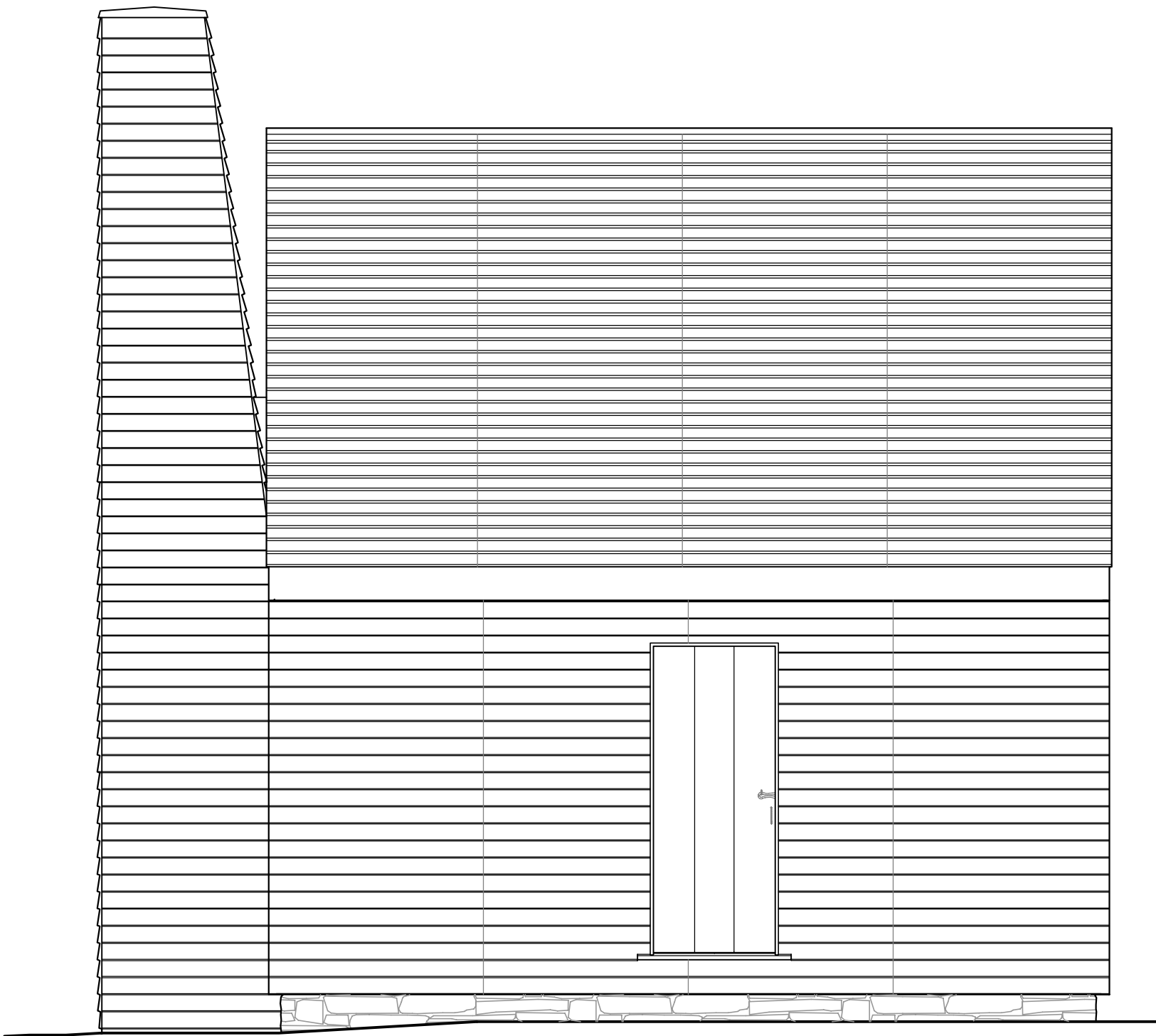


GEORGE WASHINGTON'S FERRY FARM SLAVE QUARTERS EXHIBIT

268 KINGS HIGHWAY, FREDERICKSBURG, VIRGINIA 22405

PROGRESS SET

AUGUST 4, 2020



MESICK ▪ COHEN ▪ WILSON ▪ BAKER ARCHITECTS, L.L.P.

388 BROADWAY
ALBANY, NY 12207
TEL (518) 433-9394
FAX (518) 433-9397

5525 OLDE TOWNE RD, SUITE B
WILLIAMSBURG, VA 23188
TEL (757) 221-0713
FAX (757) 221-0714

ARCHITECTURAL ABBREVIATIONS

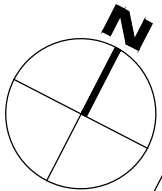
ABBREVIATION	DESCRIPTION
AFF	ABOVE FINISHED FLOOR
ALT	ALTERNATE
APPROX	APPROXIMATE
B/O, BO	BOTTOM OF
BLDG	BUILDING
BLKG	BLOCKING
CH	CEILING HEIGHT
CL	CENTER LINE
CLG	CEILING
CLR	CLEAR
CONT	CONTINUOUS
DET	DETAIL
DWG	DRAWING
EA	EACH
ELEV	ELEVATION
EQ	EQUAL
EXIST	EXISTING
EXT	EXTERIOR
FF	FINISH FLOOR
FIN	FINISH
FLR	FLOOR
F/O	FACE OF
FUR	FURRING
GA	GAUGE
GL	GLASS, GLAZING
HDWR	HARDWARE
HGT, HT	HEIGHT
HORIZ	HORIZONTAL
INSUL	INSULATION
MAX	MAXIMUM
MFR	MANUFACTURER
MIN	MINIMUM
MISC	MISCELLANEOUS
MO	MASONRY OPENING
MTL	METAL
NIC	NOT IN CONTRACT
NTS	NOT TO SCALE
OC	ON CENTER
PLAS	PLASTER
PNT	PAINT
REQ'D	REQUIRED
RM	ROOM
RO	ROUGH OPENING
SECT	SECTION
SIM	SIMILAR
SPEC	SPECIFICATION
SS	STAINLESS STEEL
STL	STEEL
THK	THICK
T/O, TO	TOP OF
TYP	TYPICAL
VERT	VERTICAL
VIF	VERIFY IN FIELD
W/	WITH
W/O	WITHOUT
WD	WOOD

LIST OF DRAWINGS

T-1	TITLE SHEET
SP-1	SITE PLAN
A-1	FRAMING PLAN, SECTIONS, AND ELEVATION
A-2	BUILDING ELEVATIONS
A-3	TIMBER FRAME DETAILS
A-4	DOOR DETAILS
A-5	LADDER STAIR AND WINDOW DETAILS
A-6	HARDWARE
A-7	TRAP DOOR DETAILS AND CONSTRUCTION NOTES



1 SITE PLAN
SP-1 Scale: 1"= 200'-0"



**MESICK
COHEN
WILSON
BAKER
architects**

388 BROADWAY
ALBANY, NY 12207
p. (518)433-9394
f. (518)433-9397

5525 OLD TOWNE RD.
SUITE B
WILLIAMSBURG, VA 23188
p. (757)221-0713
f. (757)221-0714

CONSULTANTS

SITE PLAN

**SLAVE QUARTERS EXHIBIT AT
GEORGE WASHINGTON'S FERRY FARM
GEORGE WASHINGTON FOUNDATION**
268 KINGS HIGHWAY, FREDERICKSBURG, VIRGINIA 22405

**NOT FOR
CONSTRUCTION**

PLOTTED BY:

REVISIONS

SCALE
AS SHOWN

COMMISSION NO.
202006

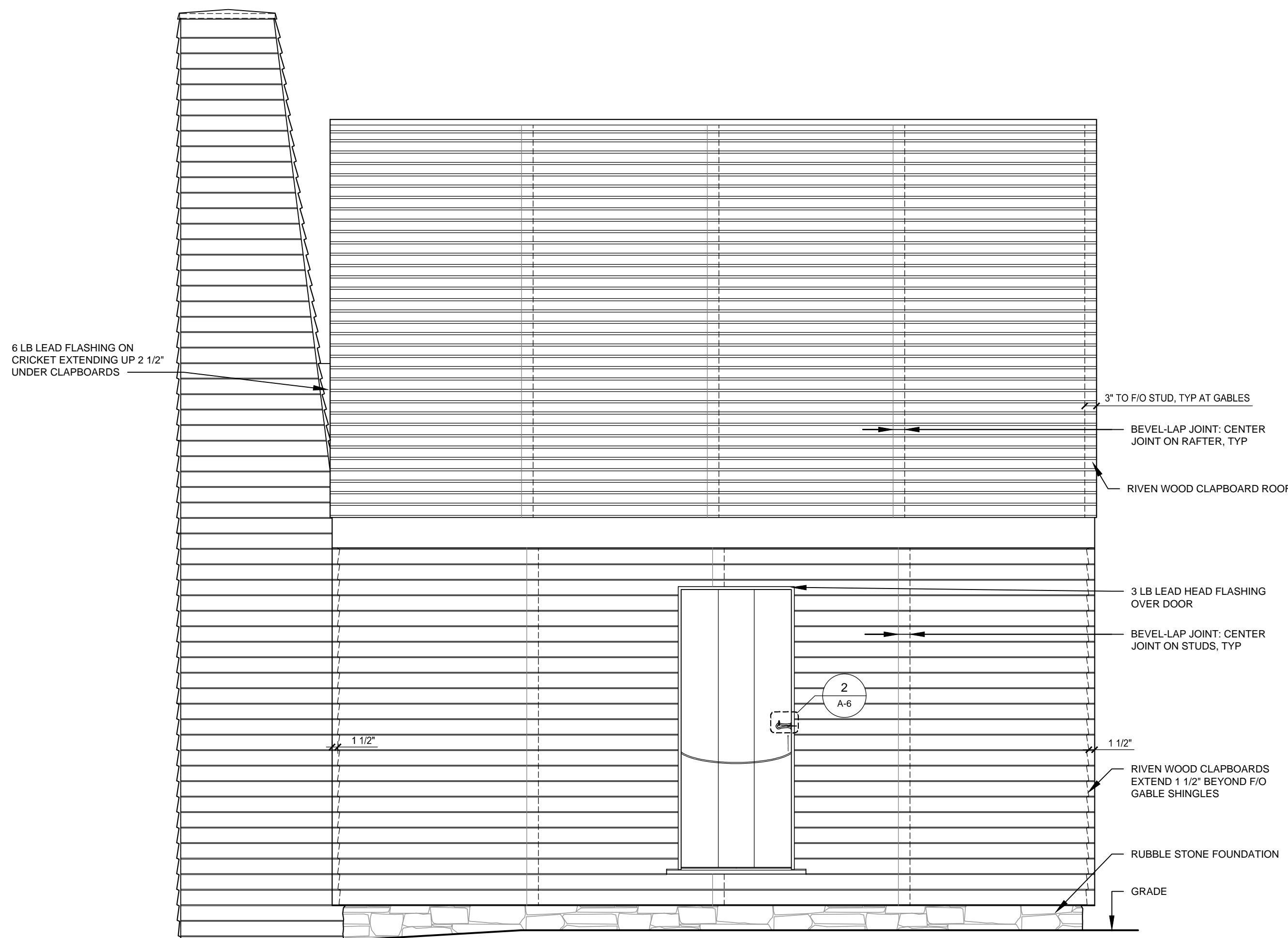
DRAWN BY
JSM

DATE
08-04-2020

SP-1

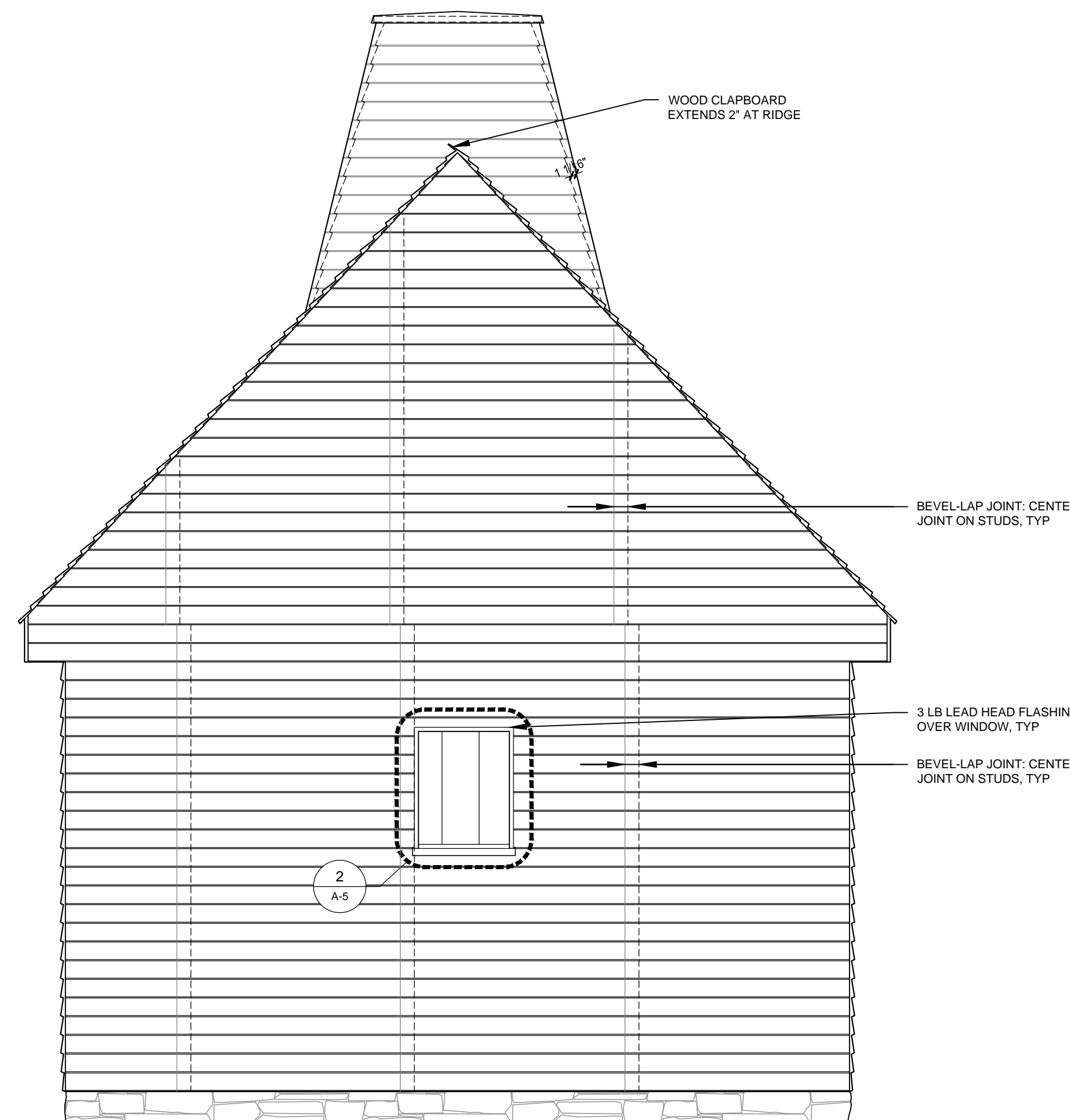
DRAWING NO.



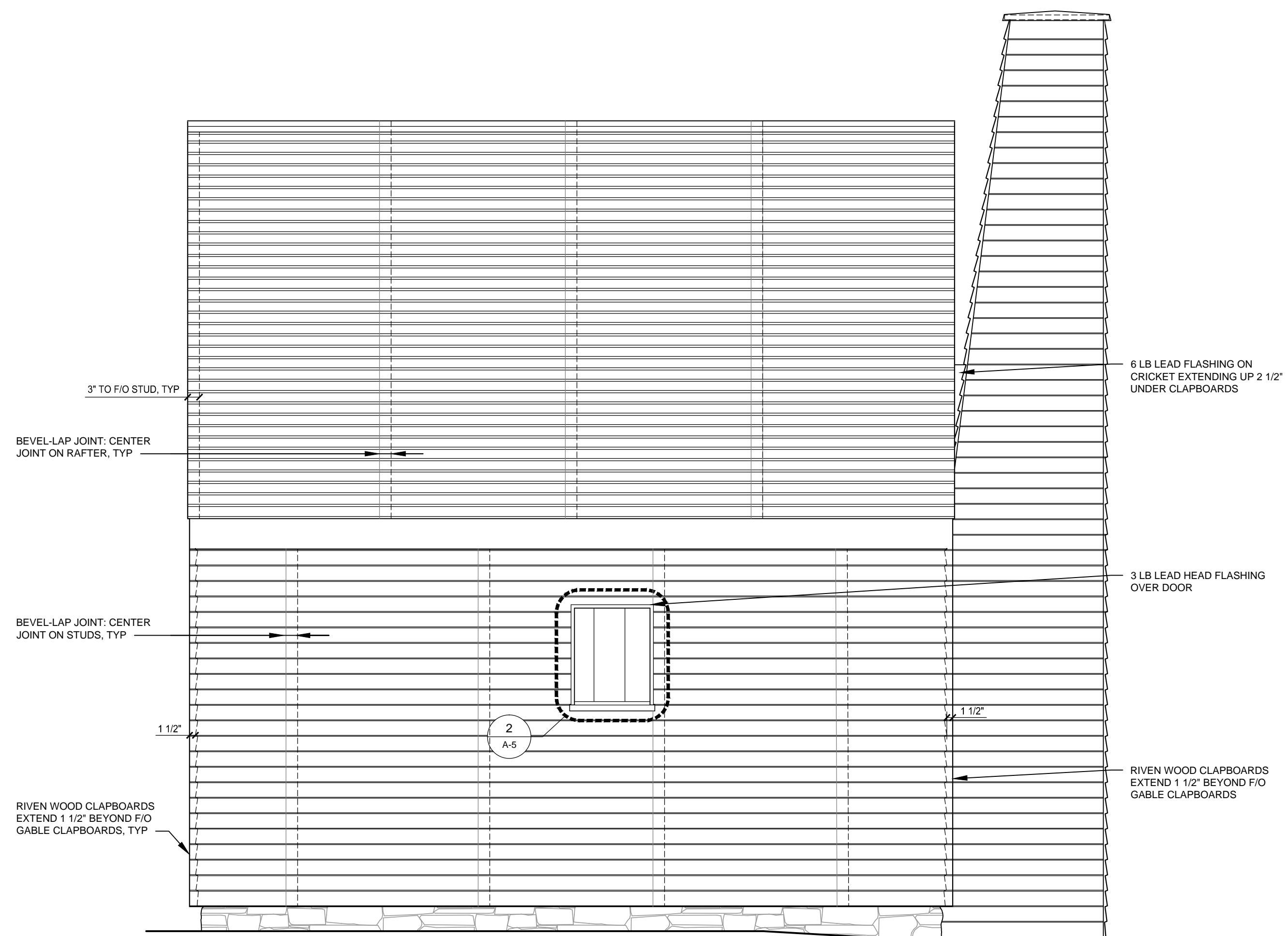


1 SOUTH ELEVATION
A-2 Scale: 1/2" = 1'-0"

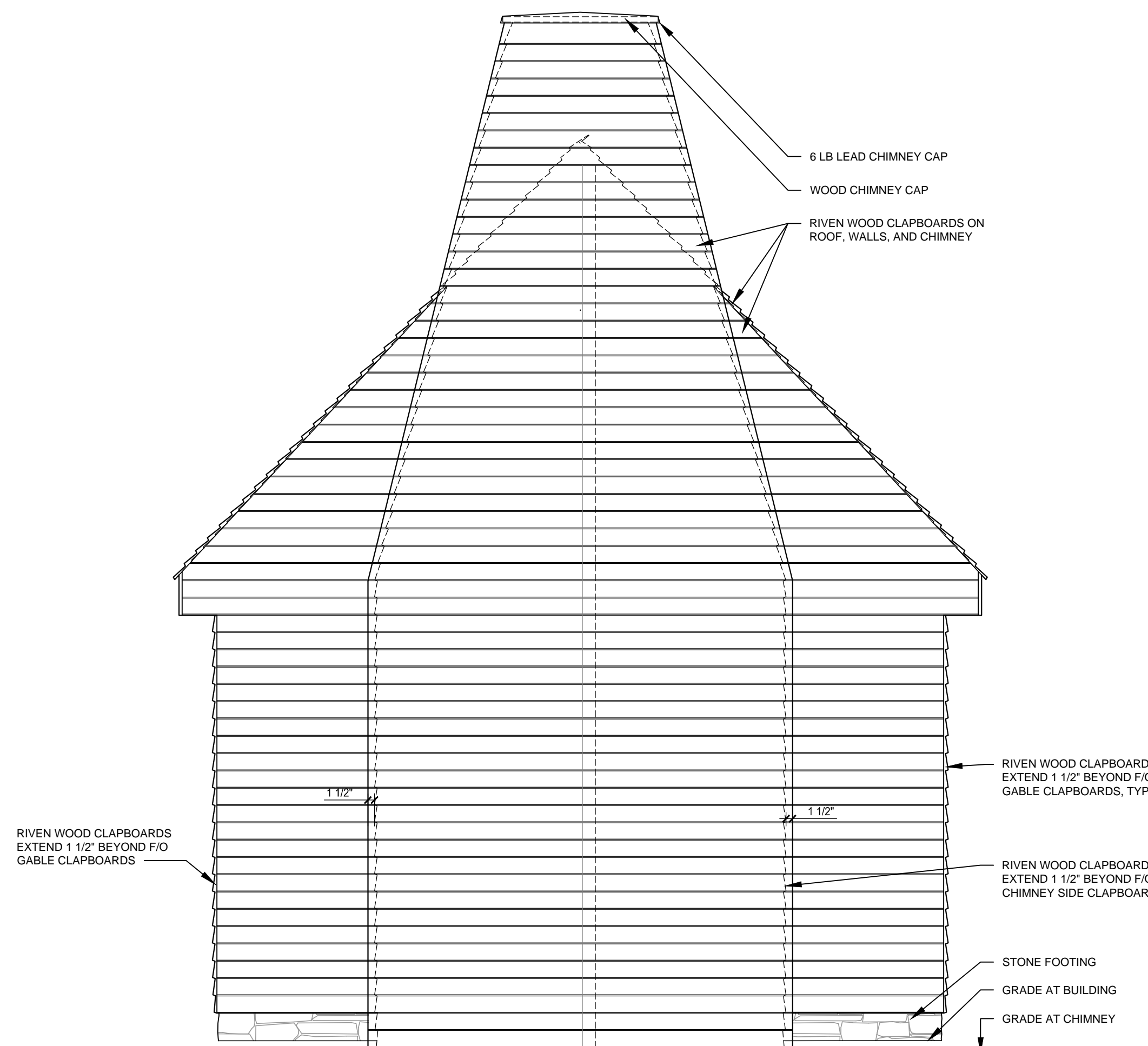
CRICKET EXTENDING UP 2 1/2"



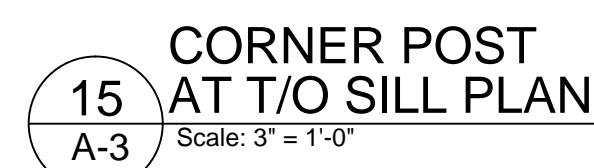
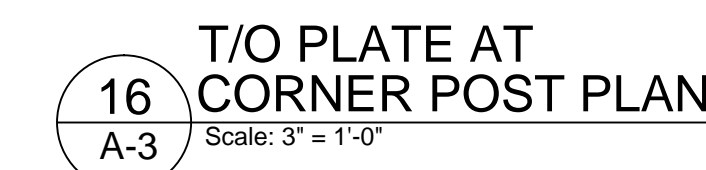
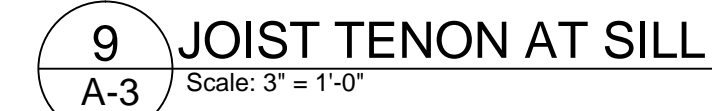
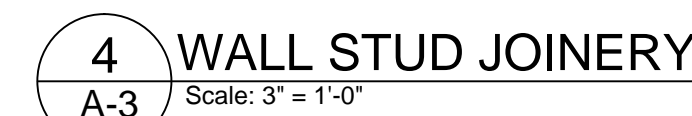
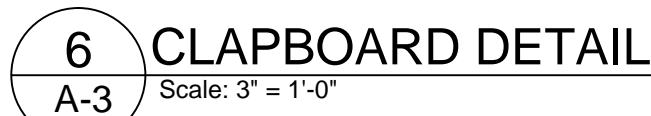
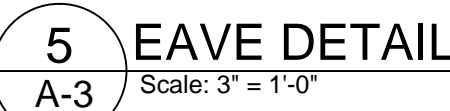
2 EAST ELEVATION
A-2 Scale: 1/2" = 1'-0"



3 NORTH ELEVATION
A-2 Scale: 1/2" = 1'-0"



4 WEST ELEVATION
A-2 Scale: 1/2" = 1'-0"

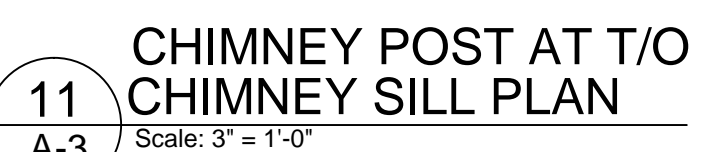
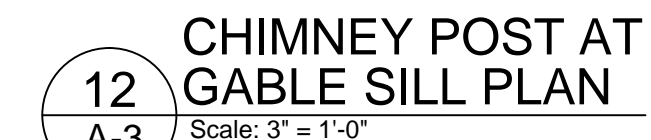


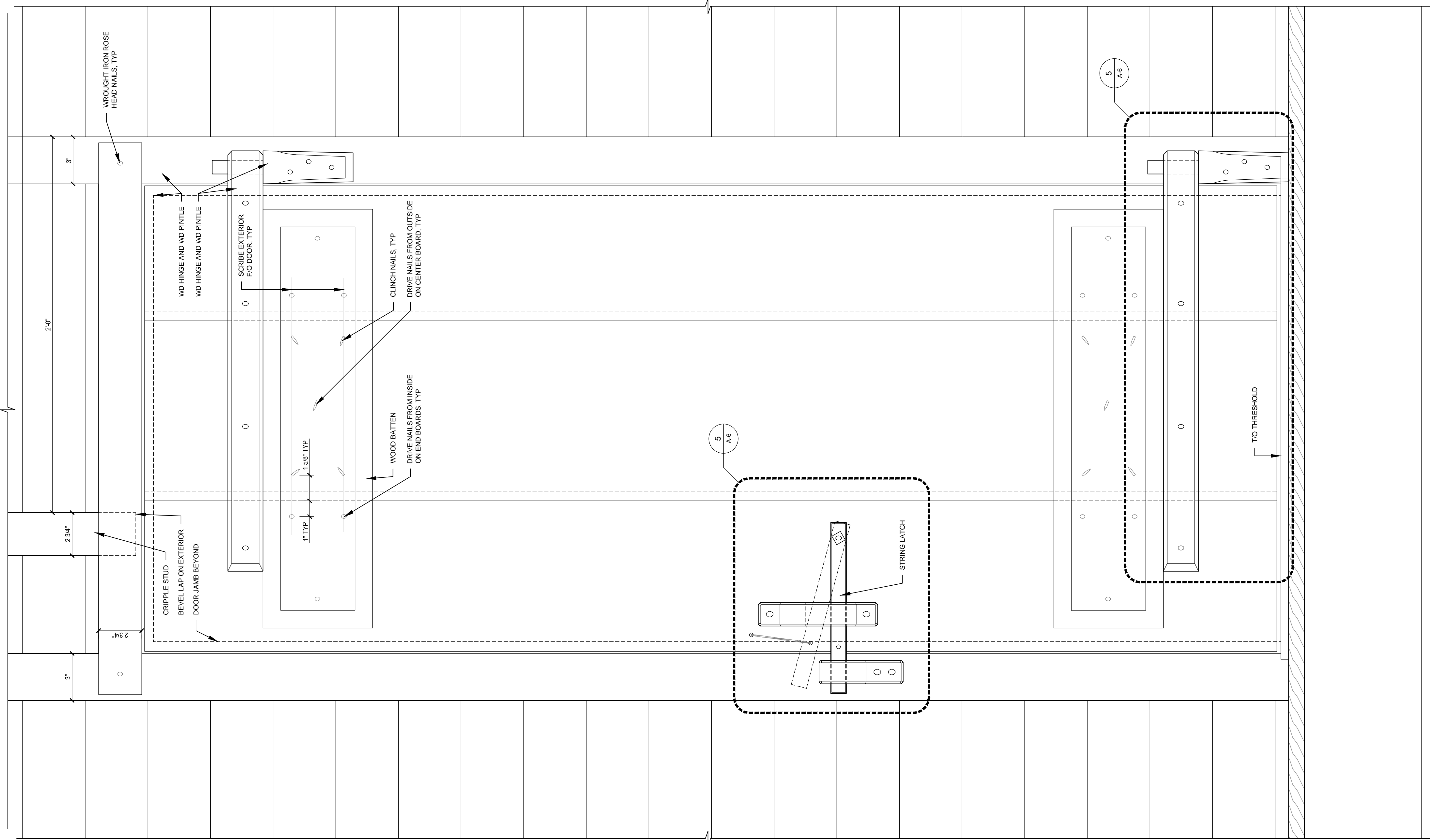
ISOMETRIC

13
A-3

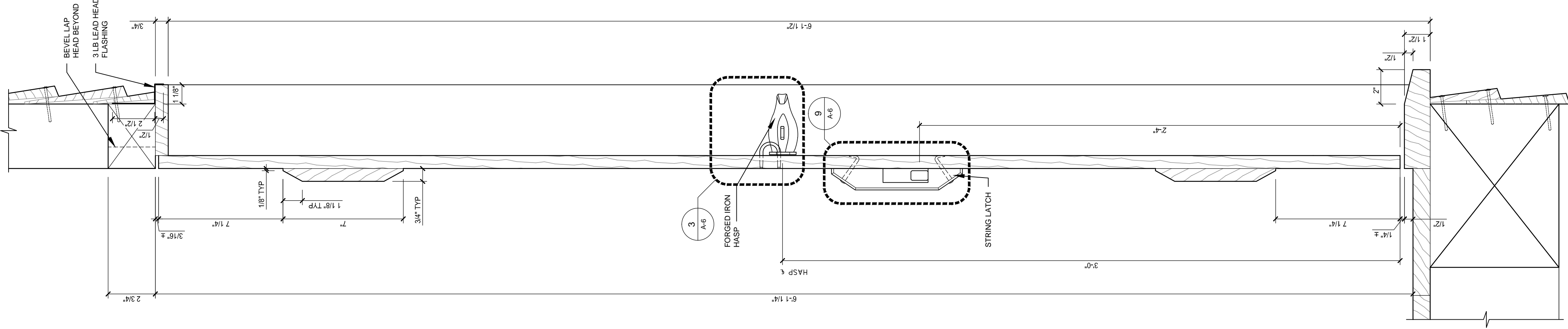
JOINERY DETAILS AT CHIMNEY POST ISOMETRIC

Scale: 3" = 1'-0"

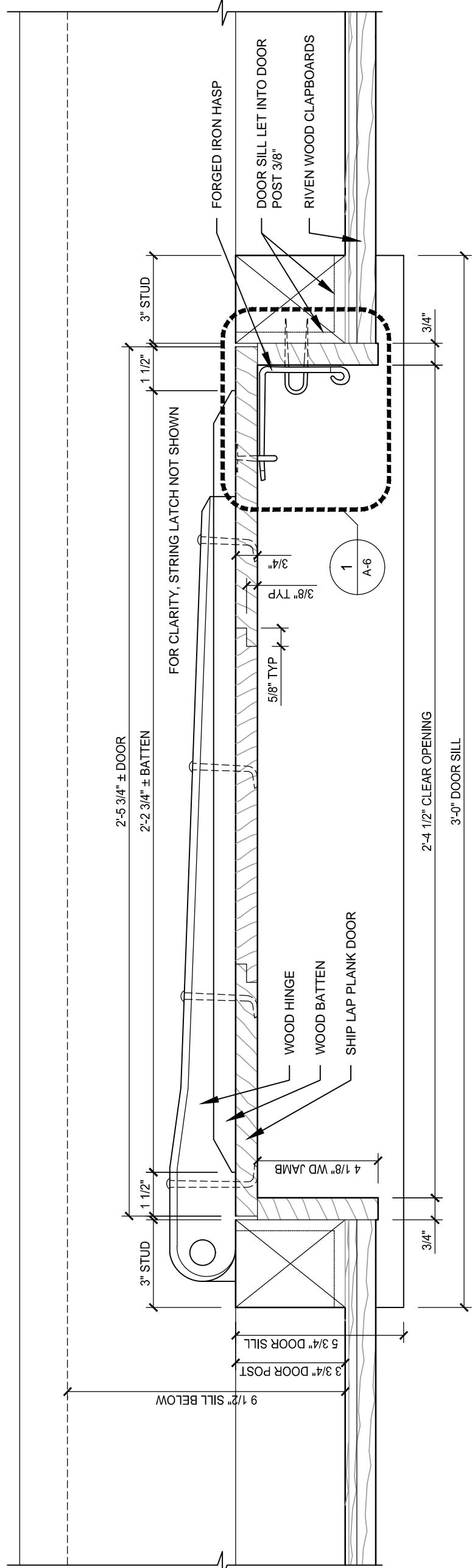




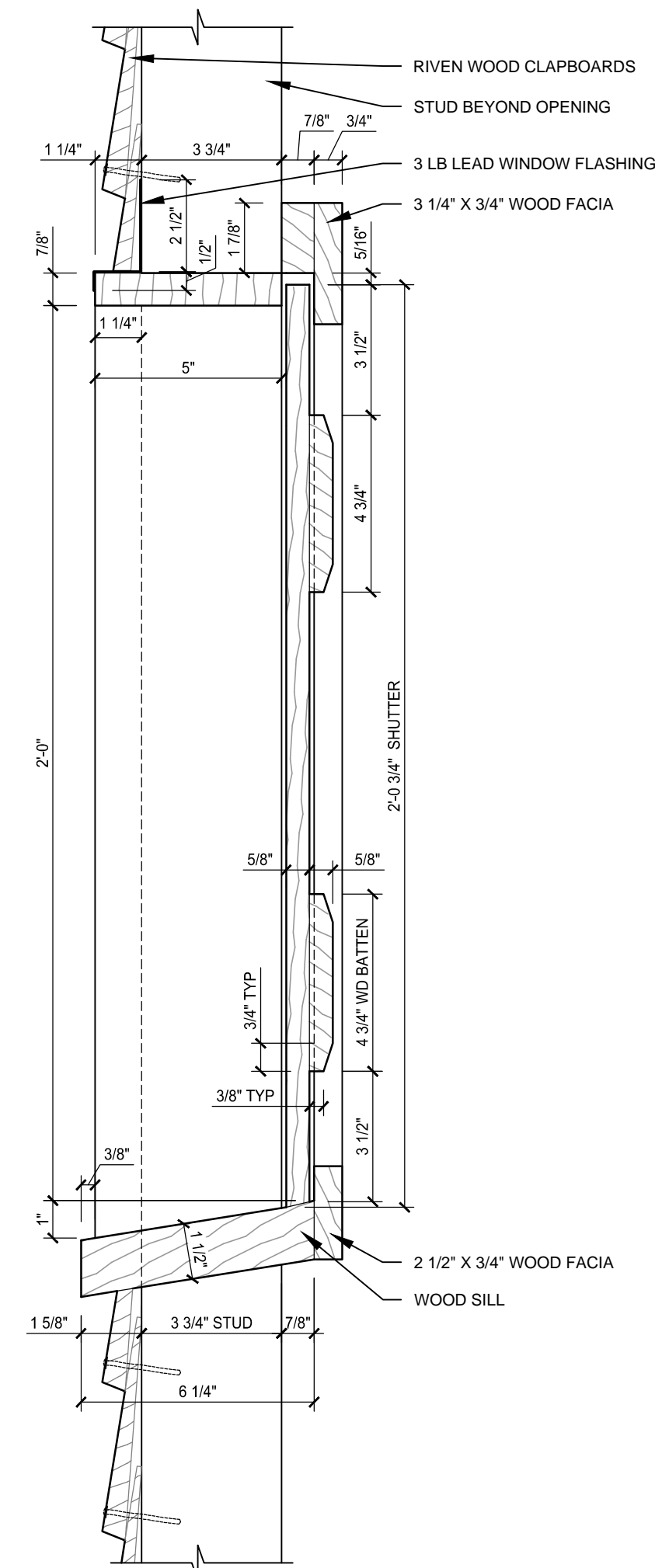
1 DOOR INTERIOR ELEVATION
A-4 Scale: 3" = 1'-0"



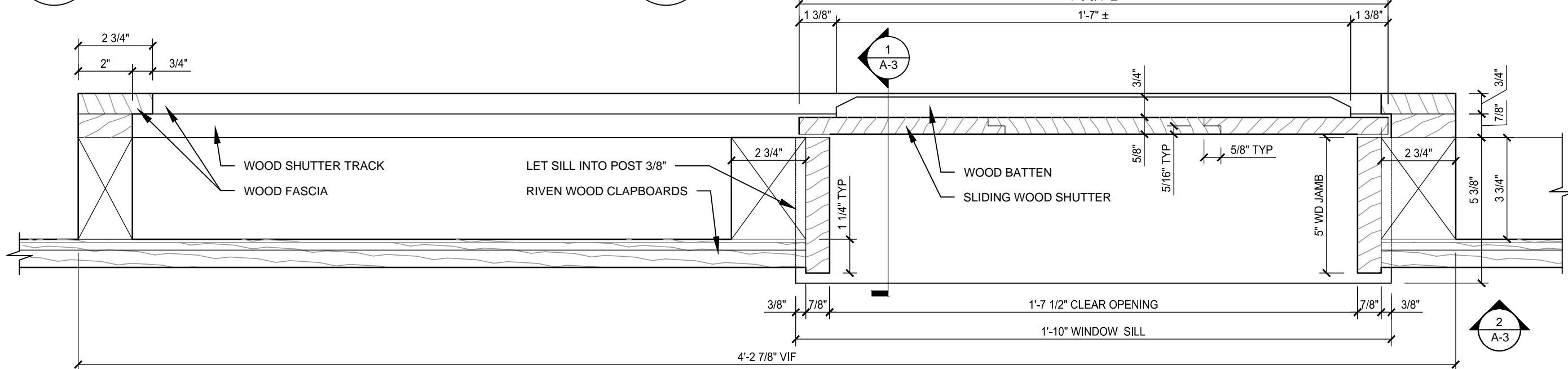
2 DOOR SECTION
A-4 Scale: 3" = 1'-0"



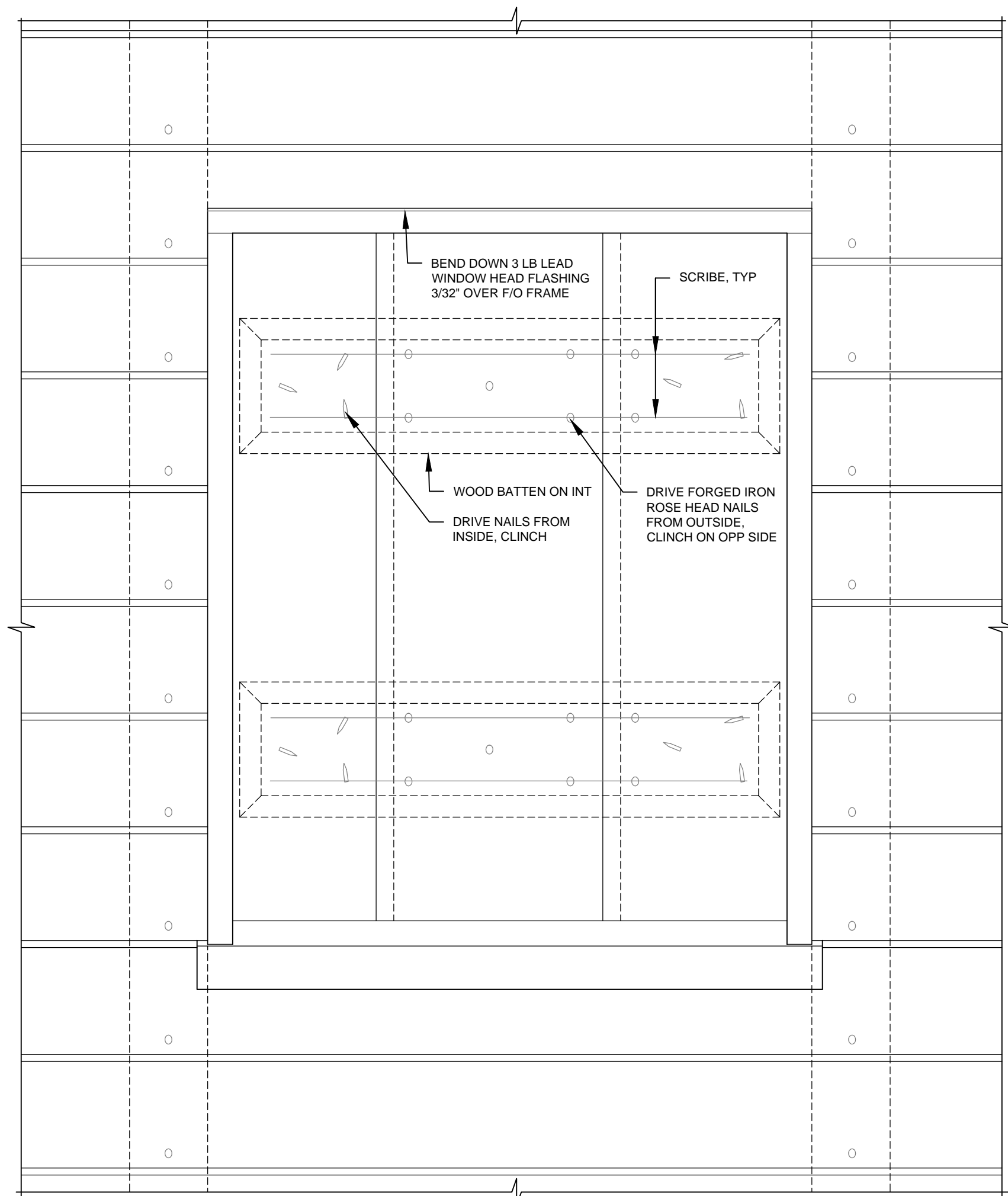
3 DOOR PLAN DETAIL
A-4 Scale: 3" = 1'-0"



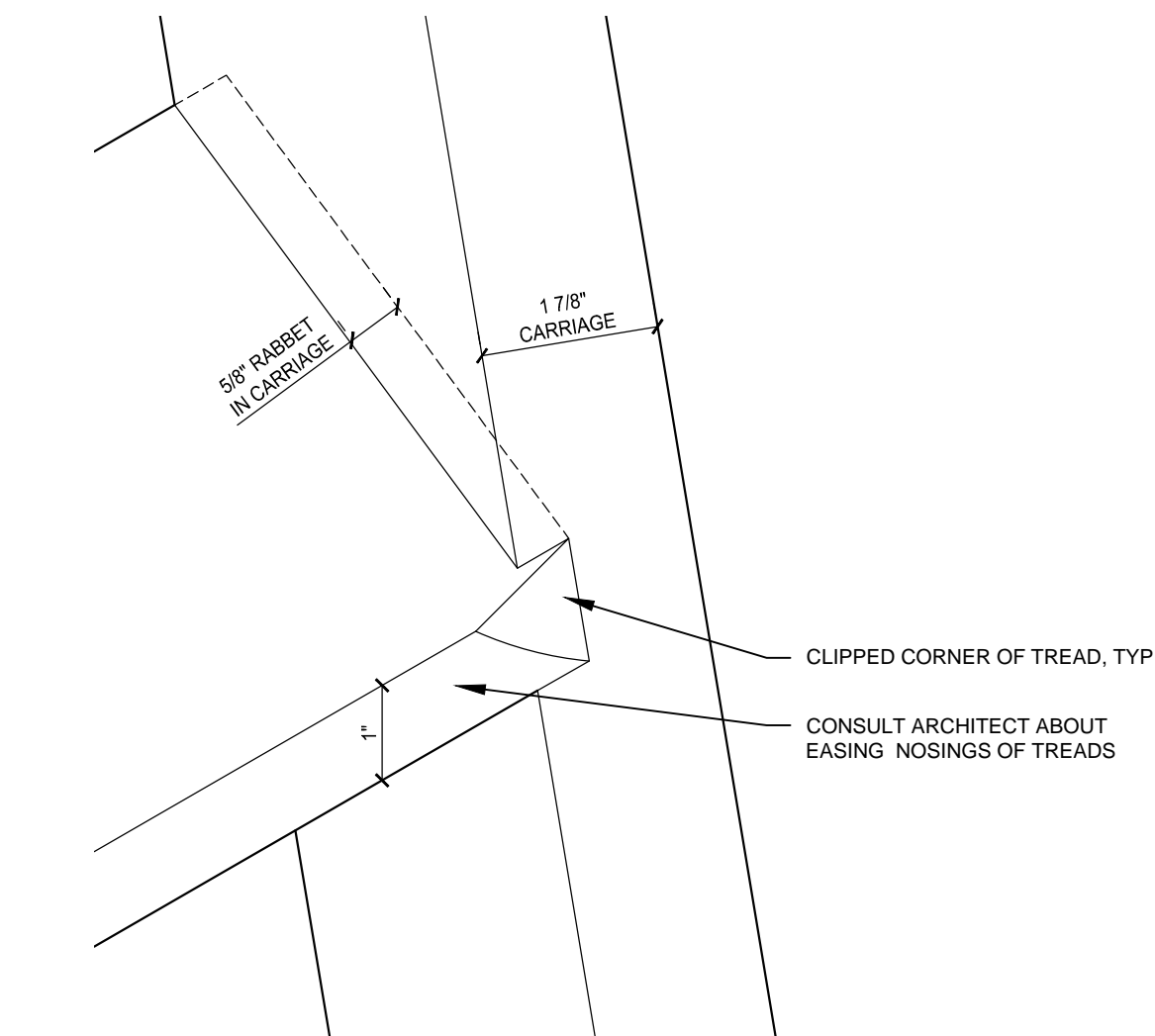
1 WINDOW SECTION
A-5 Scale: 3\" = 1'-0"



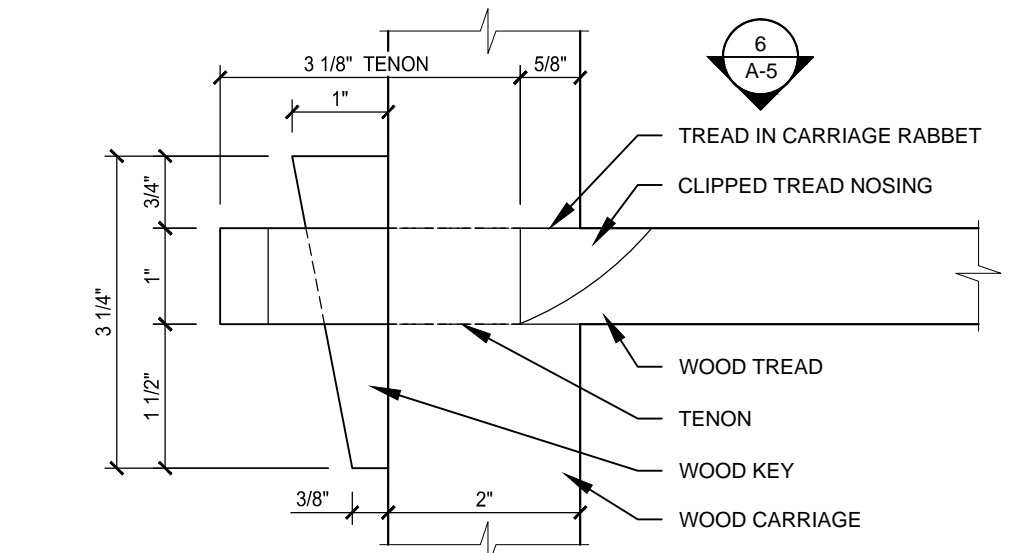
3 WINDOW PLAN DETAIL
A-5 Scale: 3\" = 1'-0"



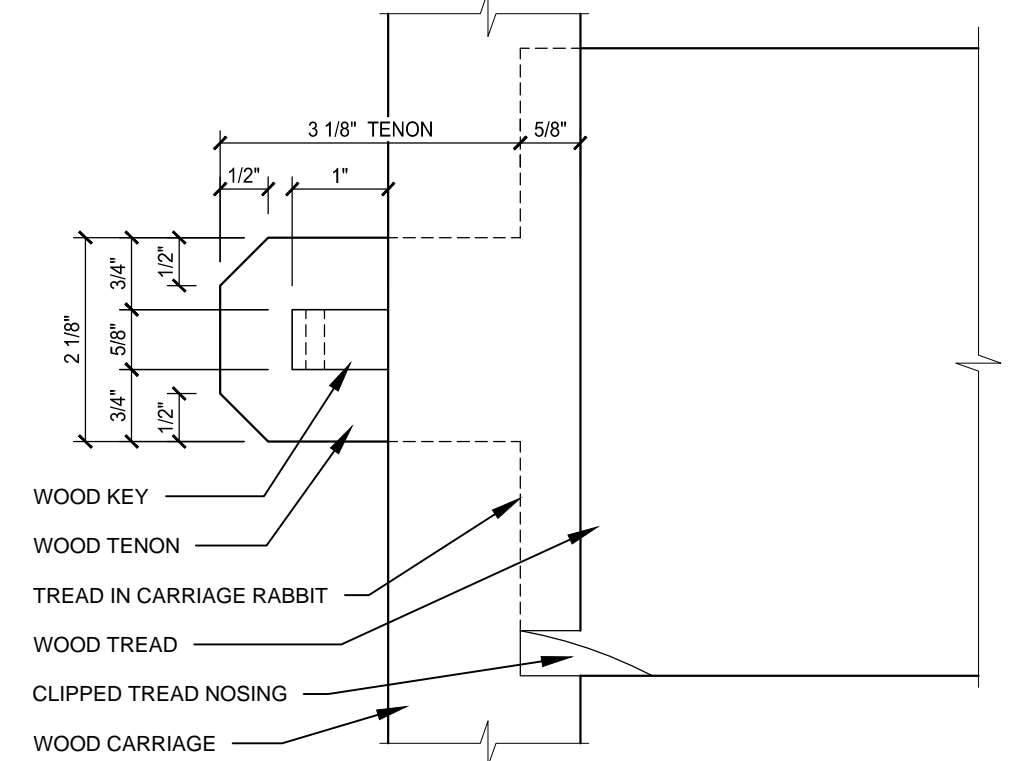
2 WINDOW EXTERIOR ELEVATION
A-5 Scale: 3\" = 1'-0"



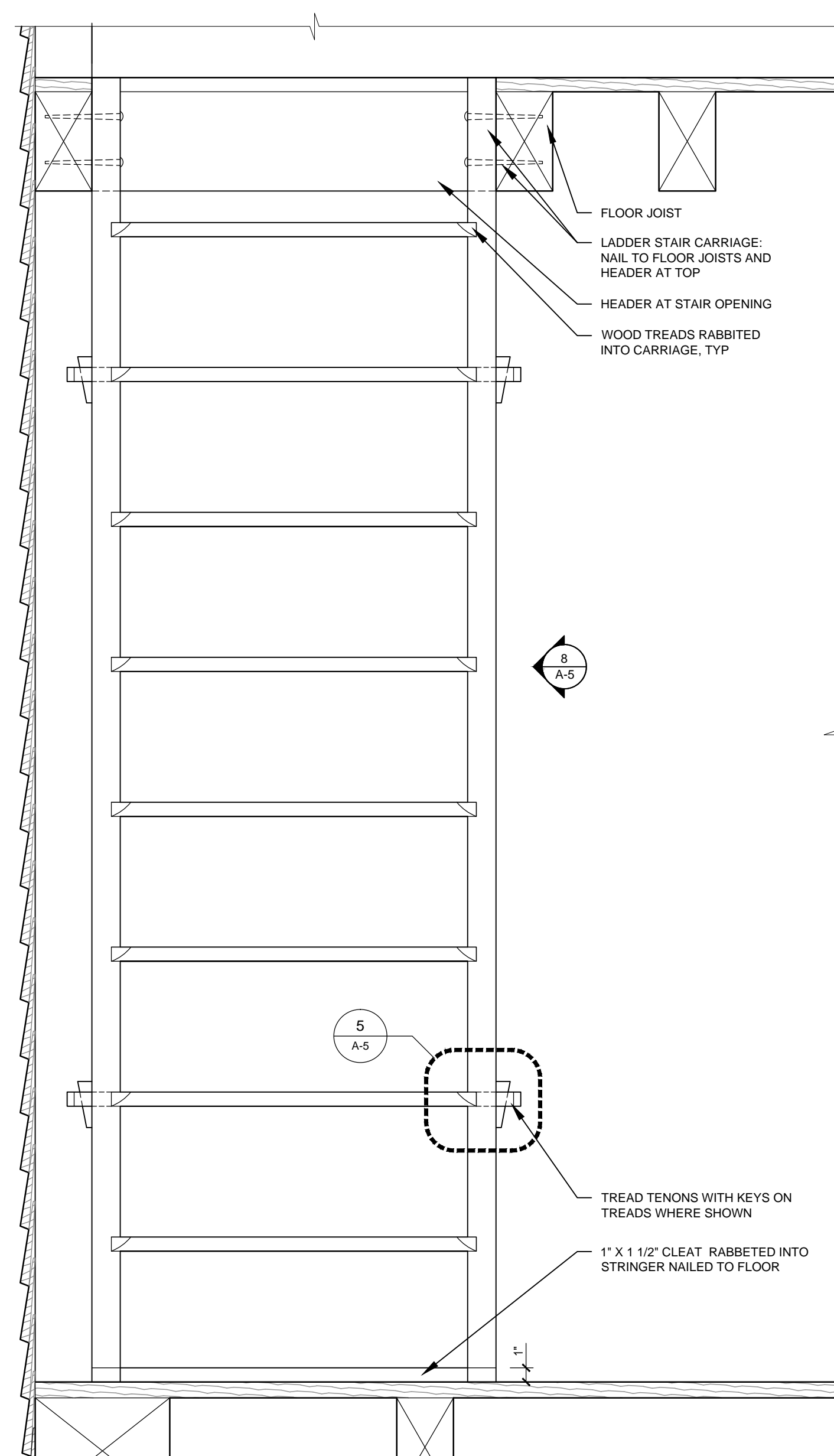
4 TREADS AT CARRIAGE - ISOMETRIC DETAIL
A-5 Scale: 6\" = 1'-0"



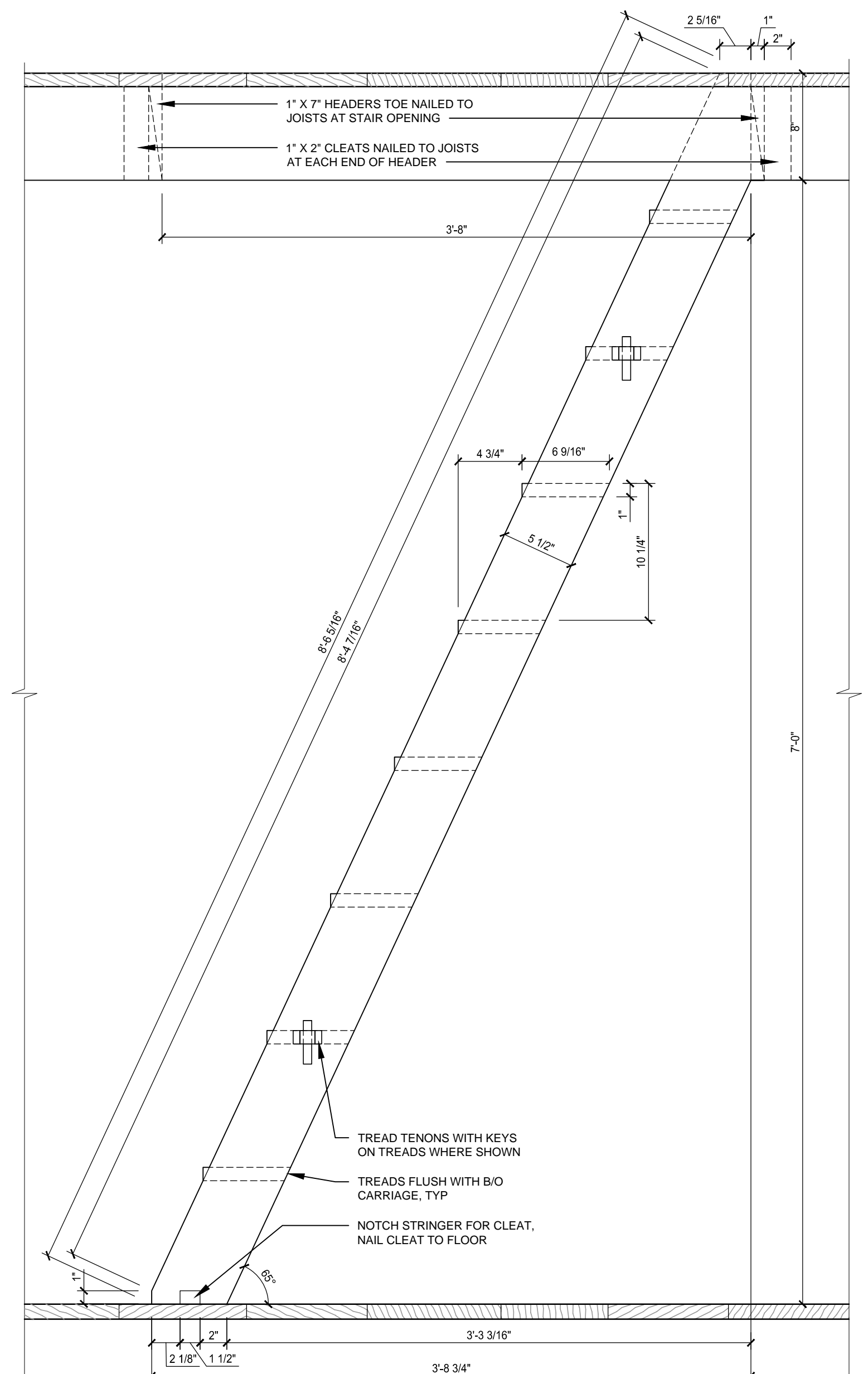
5 TREAD TENON & KEY ELEV DETAIL
A-5 Scale: 6\" = 1'-0"



6 TREAD TENON & KEY PLAN DETAIL
A-5 Scale: 6\" = 1'-0"



7 LADDER STAIR ELEVATION
A-5 Scale: 1 1/2\" = 1'-0"



8 LADDER STAIR ELEVATION
A-5 Scale: 1 1/2\" = 1'-0"

**MESICK
COHEN
WILSON
BAKER
architects**

388 BROADWAY
ALBANY, NY 12207
p. (518)433-9394
f. (518)433-9397

5525 OLD TOWNE RD.
SUITE B
WILLIAMSBURG, VA 23188
p. (757)221-0713
f. (757)221-0714

CONSULTANTS

LADDER STAIR AND WINDOW DETAILS
SLAVE QUARTERS EXHIBIT AT
GEORGE WASHINGTON'S FERRY FARM
GEORGE WASHINGTON FOUNDATION
268 KINGS HIGHWAY, FREDERICKSBURG, VIRGINIA 22405

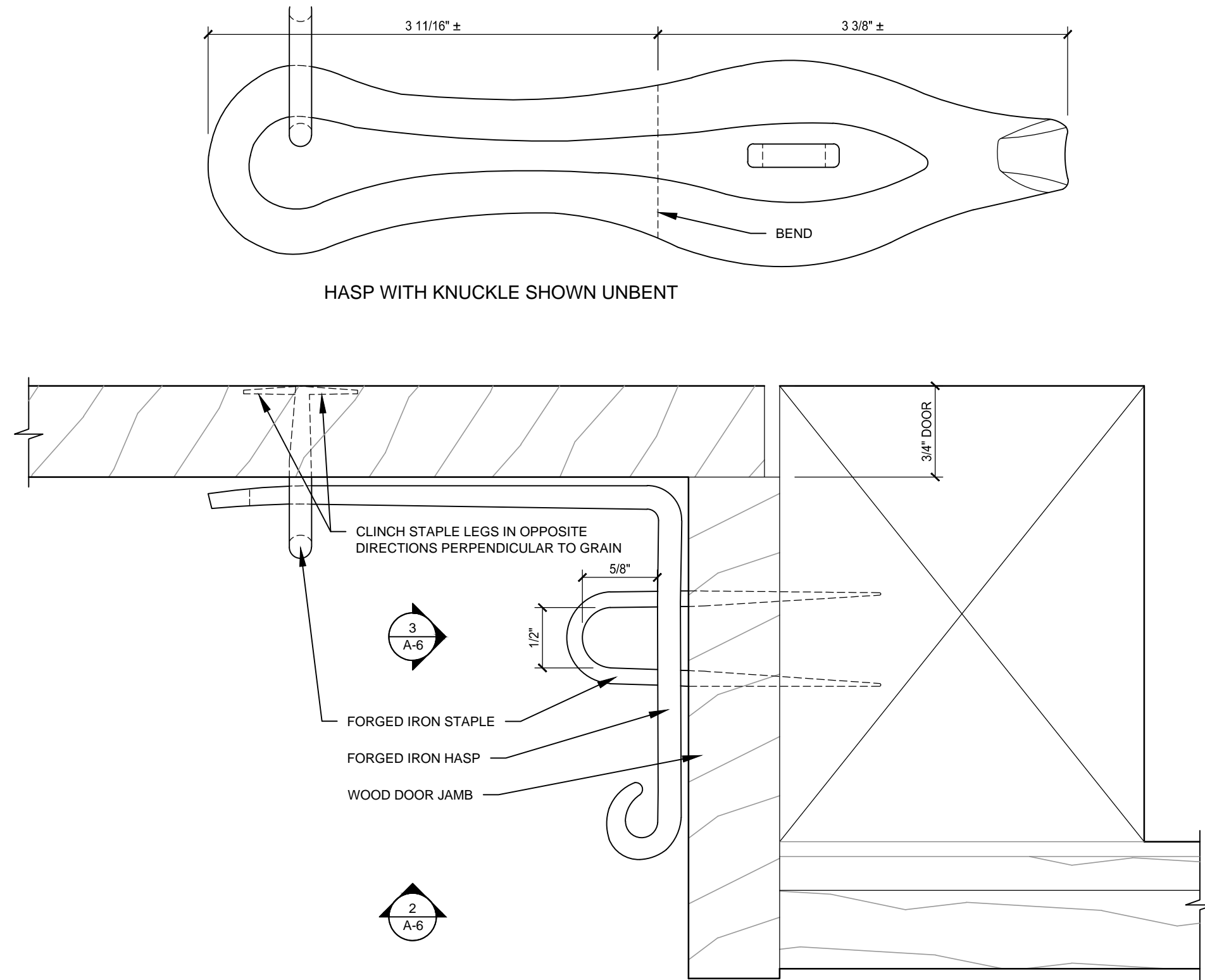
**NOT FOR
CONSTRUCTION**

PLOTTED BY:

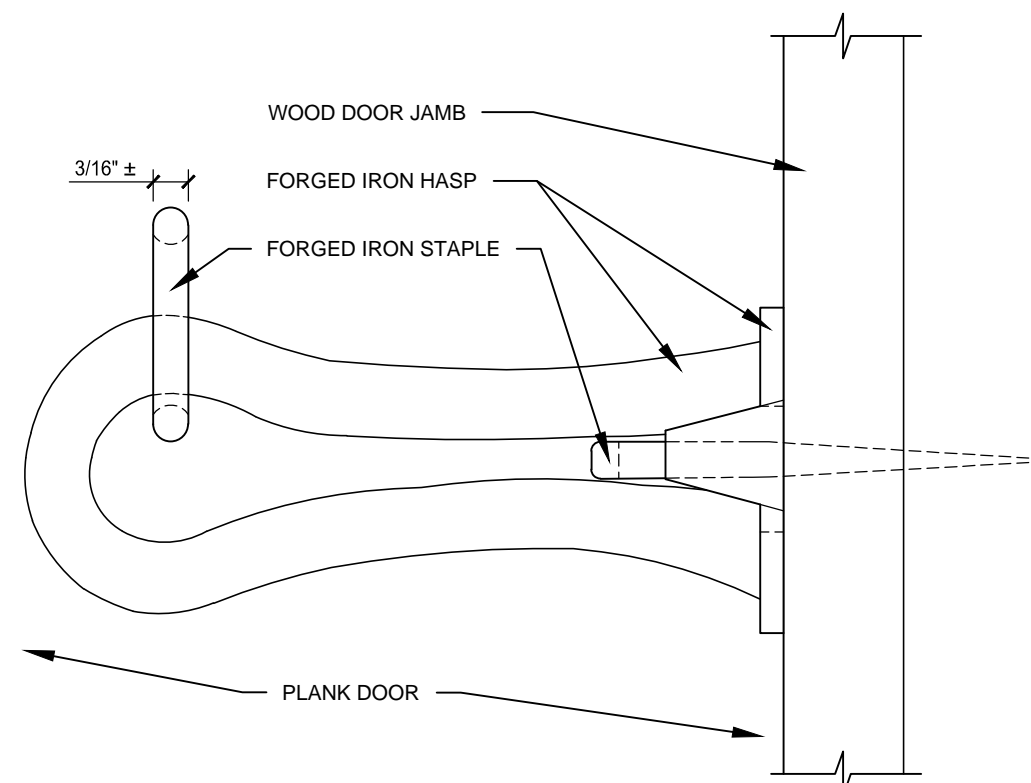
REVISIONS

SCALE
AS SHOWN
COMMISSION NO.
202006
DRAWN BY
JSM
DATE
08-04-2020

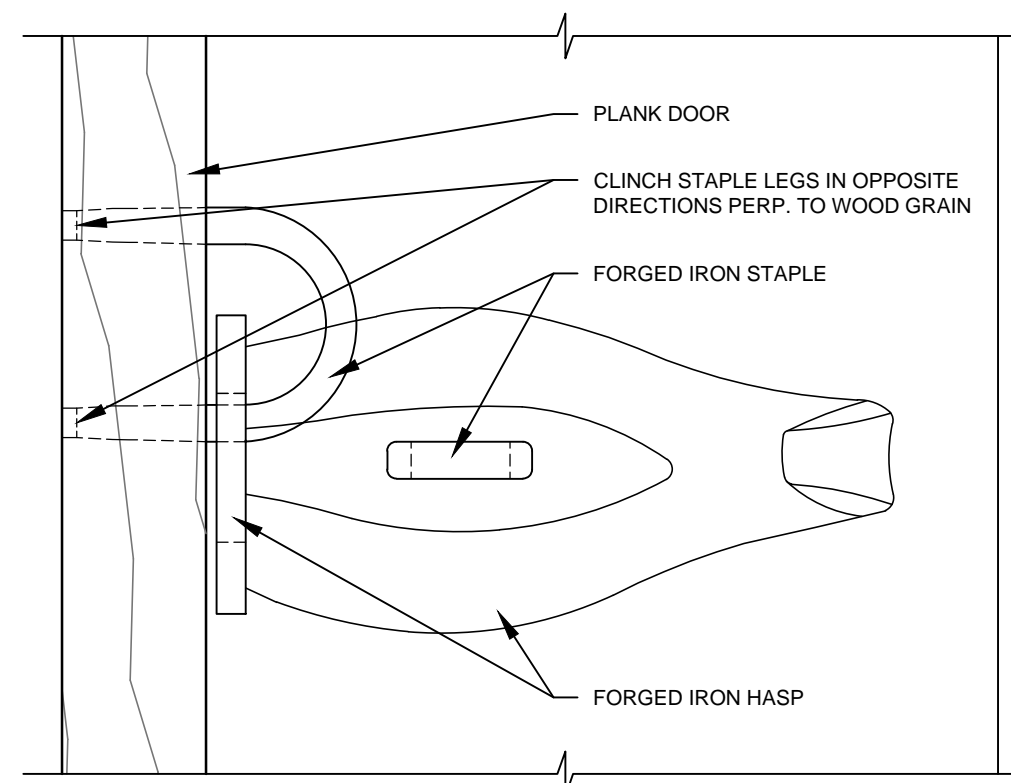
A-5
DRAWING NO.



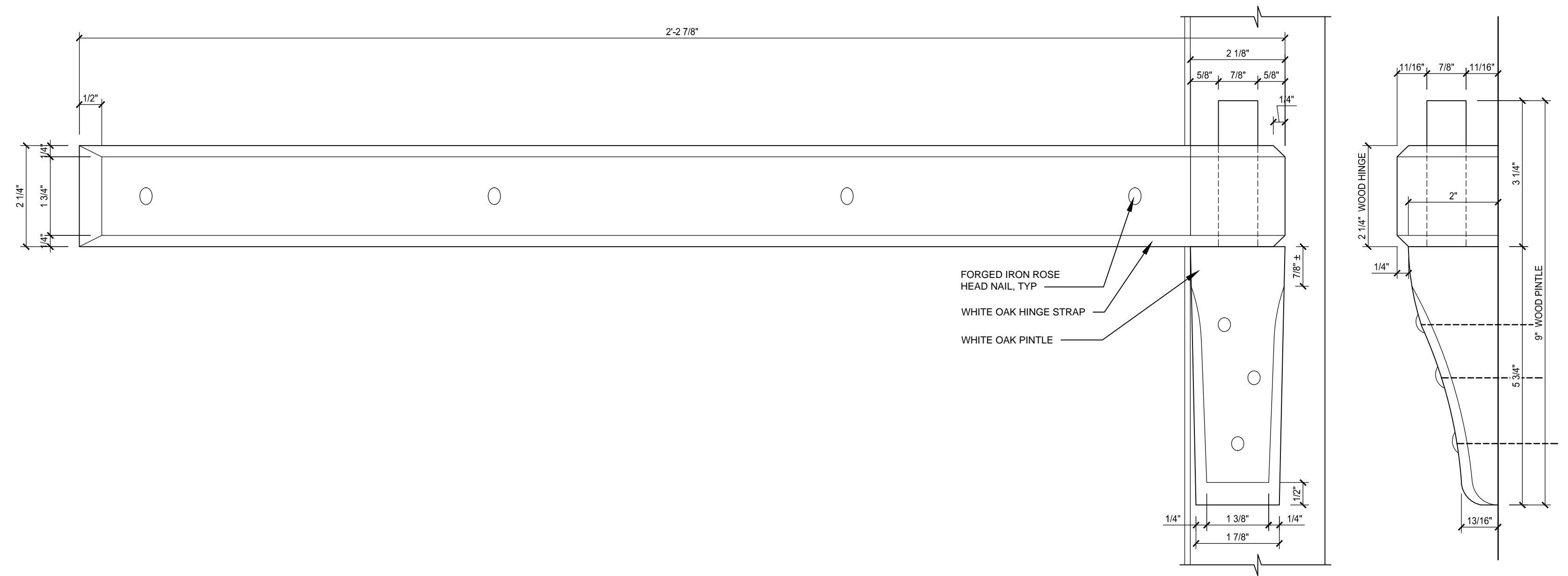
1 DOOR HASP PLAN
A-6 Scale: 1'-0" = 1'-0"



2 DOOR HASP ELEVATION
A-6 Scale: 1'-0" = 1'-0"

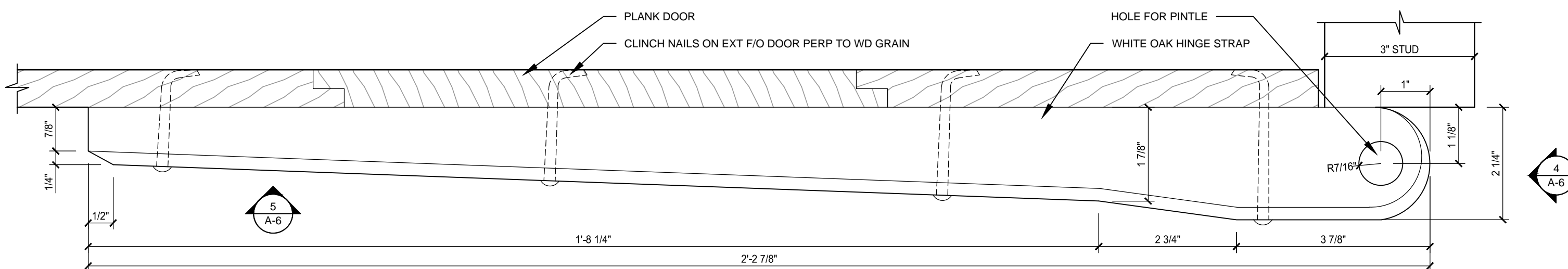


3 DOOR HASP ELEVATION
A-6 Scale: 1'-0" = 1'-0"

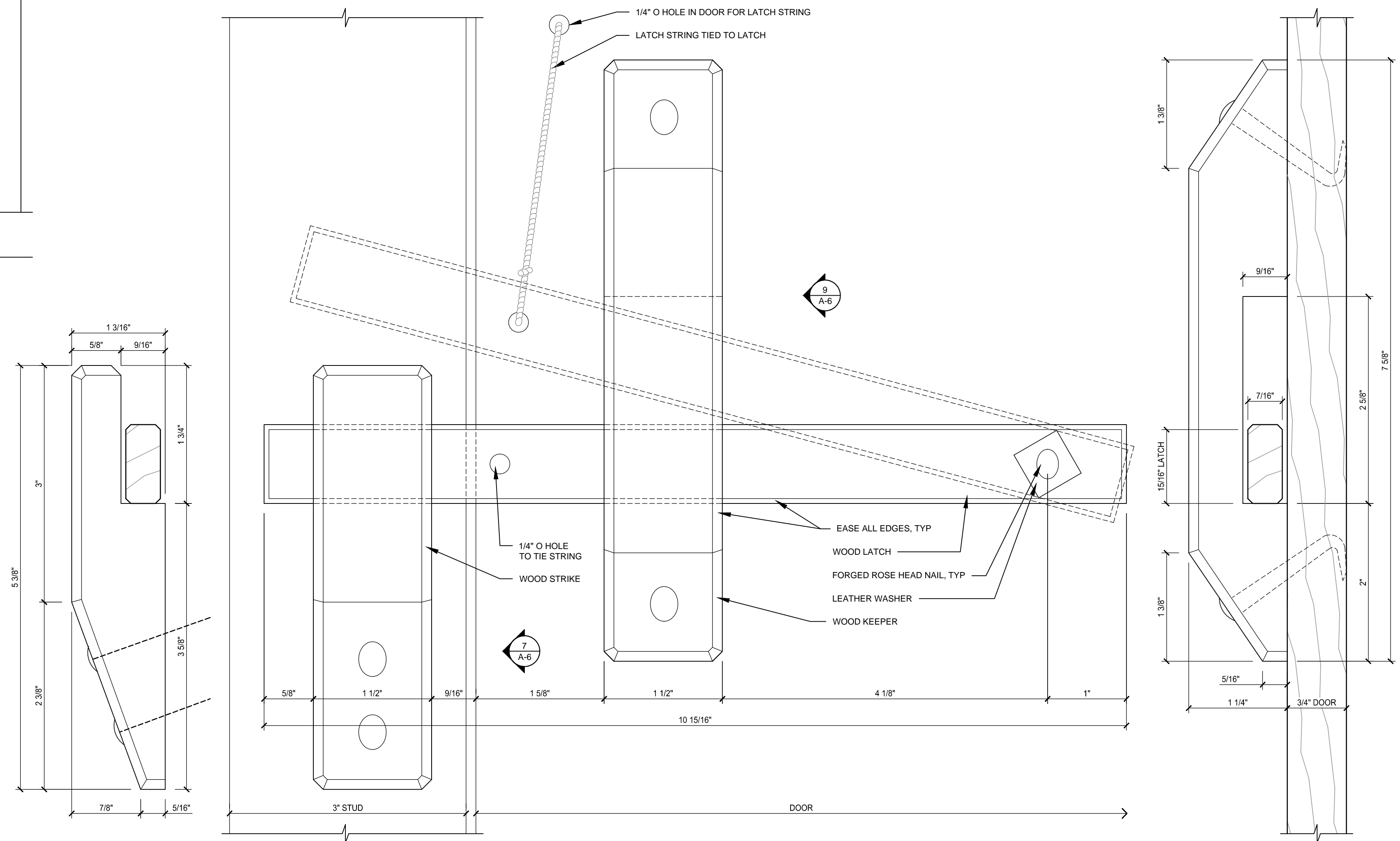


5 WOOD DOOR HINGE ELEVATION
A-6 Scale: 6" = 1'-0"

4 HINGE ELEV
A-6 Scale: 6" = 1'-0"



6 WOOD DOOR HINGE PLAN
A-6 Scale: 6" = 1'-0"



7 STRIKE ELEVATION
A-6 Scale: 1'-0" = 1'-0"

8 STRING LATCH ELEVATION
A-6 Scale: 1'-0" = 1'-0"

9 KEEPER ELEV
A-6 Scale: 1'-0" = 1'-0"

MESICK
COHEN
WILSON
BAKER
architects

388 BROADWAY
ALBANY, NY 12207
p. (518)433-9394
f. (518)433-9397

5525 OLD TOWNE RD.
SUITE B
WILLIAMSBURG, VA 23188
p. (757)221-0713
f. (757)221-0714

CONSULTANTS

HARDWARE
SLAVE QUARTERS EXHIBIT AT
GEORGE WASHINGTON'S FERRY FARM
GEORGE WASHINGTON FOUNDATION
268 KINGS HIGHWAY, FREDERICKSBURG, VIRGINIA 22405

NOT FOR
CONSTRUCTION

PLOTTED BY:

REVISIONS

SCALE

AS SHOWN

COMMISSION NO.

202006

DRAWN BY

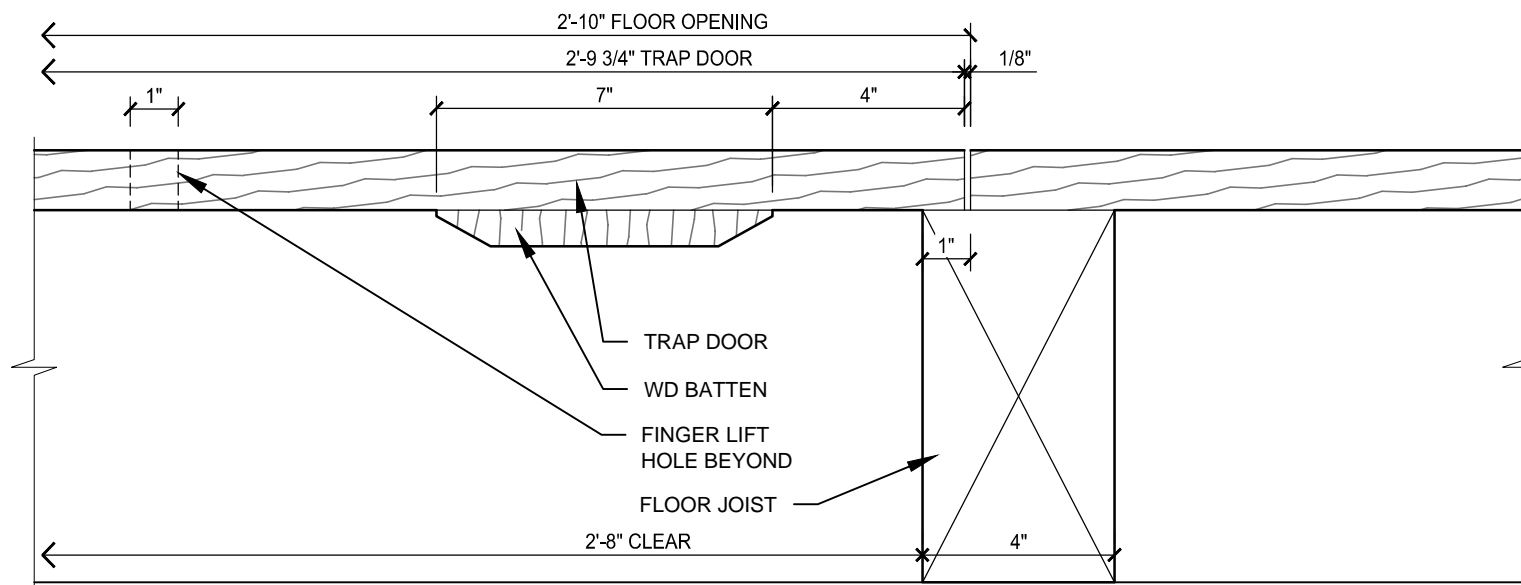
JSM

DATE

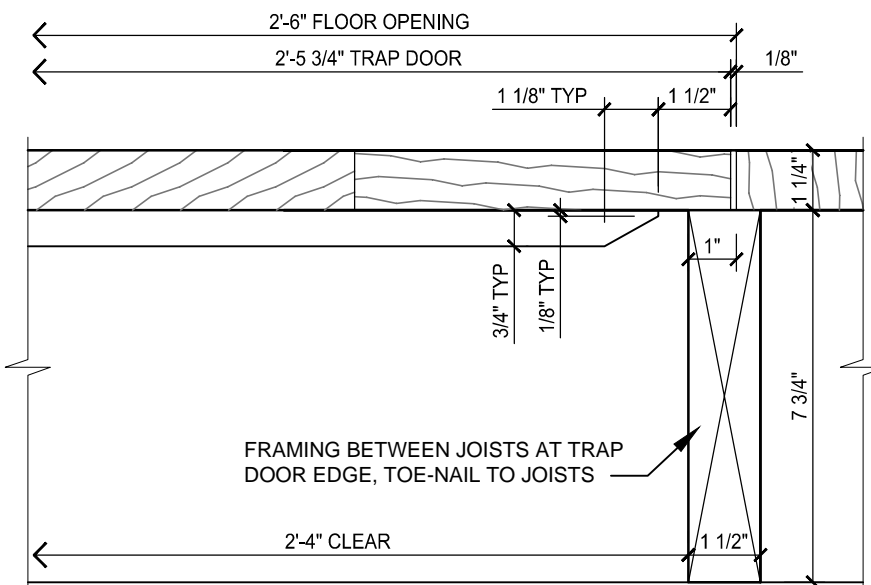
08-04-2020

A-6

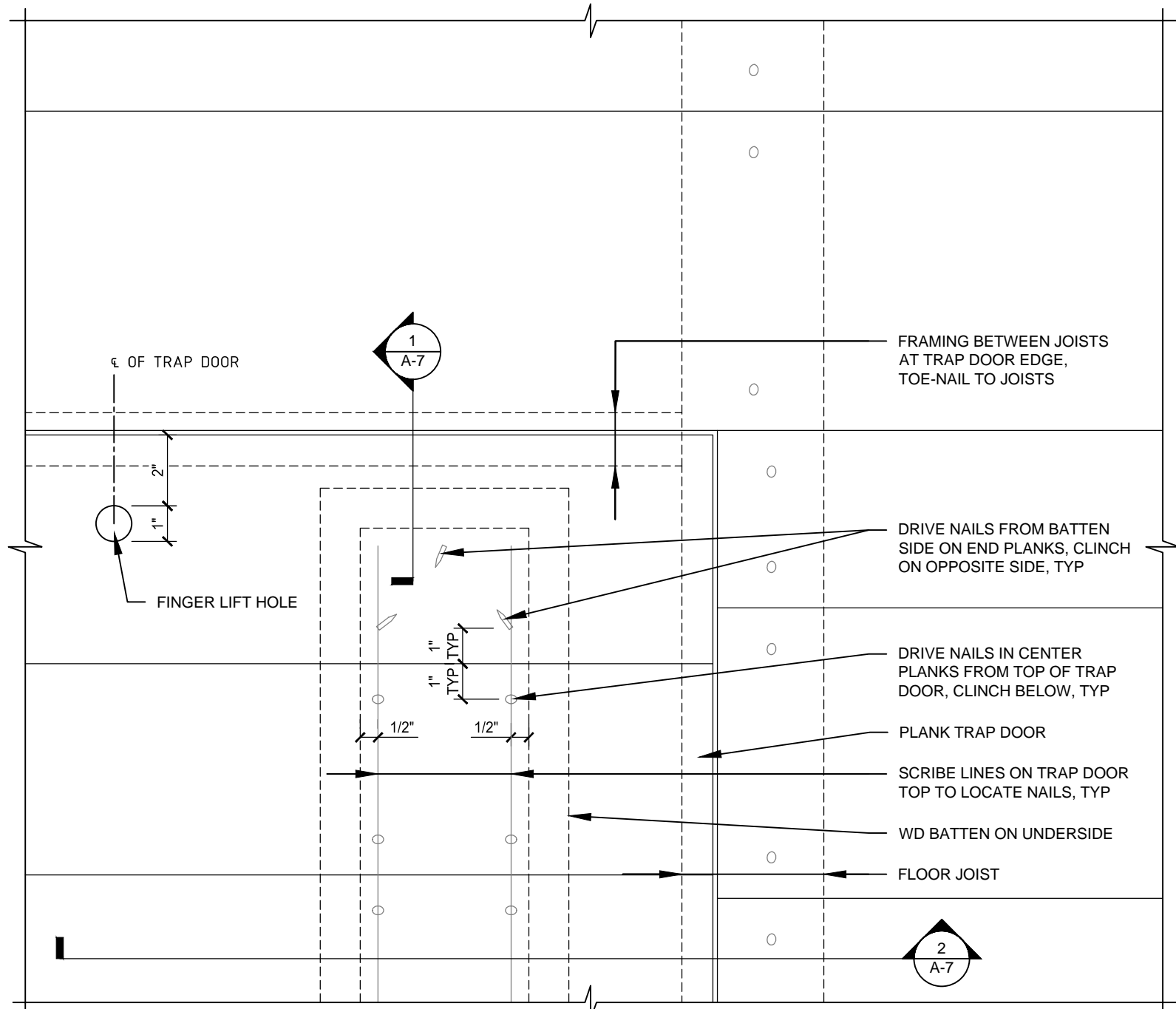
DRAWING NO.



1
A-7 TRAP DOOR SECTION DETAIL
Scale: 3" = 1'-0"



2
A-7 TRAP DOOR SECTION DETAIL
Scale: 3" = 1'-0"



3
A-7 TRAP DOOR PLAN DETAIL
Scale: 3" = 1'-0"

GENERAL NOTES

- COORDINATE LOCATION OF ALL NEW CONSTRUCTION WITH ARCHEOLOGIST.
- THE BUILDING IS BEING CONSTRUCTED OVER ARCHEOLOGICAL REMAINS. DO NOT DISTURB OR DAMAGE UNDERLYING ARCHEOLOGY. ALL NEW CONSTRUCTION SHALL BE LOCATED ABOVE THE DEPTH OF EXISTING ARCHAEOLOGICAL SURFACE.
- VERIFY ALL DIMENSIONS IN FIELD.

STONE FOUNDATION NOTES

- STONE FOUNDATION WALLS AND OTHER WALLS ADJOINING THE STORAGE PIT TO BE CONSTRUCTED OF DRY LAID AQUIA SANDSTONE RUBBLE.
- LEVEL TOP OF STONE FOUNDATION TO PROVIDE FLAT BEARING FOR TIMBER SILL.
- RUBBLE FOUNDATION WALLS TO BE BUILT ON COMPACTED BASE OF CRUSHED STONE HELD AT HIGH ENOUGH ELEVATION TO AVOID IMPINGING ON THE ARCHAEOLOGICAL SURFACE BELOW.

BRICK MASONRY NOTES

- BRICKS: OLD CAROLINA HAND MADE FACE BRICK 2 3/4" X 8 1/2" X 4". COLOR TO BE CHOSEN BY ARCHITECT.
- MORTAR: 1 PART WHITE CEMENT, 2 PARTS HYDRATED LIME, 6 PARTS SAND. USE CLEAN, FINE NATURAL BANK SILICA SAND FREE FROM EXCESSIVE ORGANIC OR DELETERIOUS MATTER AND GRADED IN COMPLIANCE WITH ASTM C 144. DO NOT USE ADMIXTURES, INCLUDING PIGMENTS, AIR-ENTRAINING AGENTS, ACCELERATORS, RETARDERS, WATER-REPELLENT AGENTS, ANTIFREEZE COMPOUNDS, OR OTHER ADMIXTURES, UNLESS OTHERWISE INDICATED. DO NOT USE CALCIUM CHLORIDE IN MORTAR. USE POTABLE WATER FOR MIXING MORTAR.
- MORTAR BEDDING AND JOINTING: LAY SOLID BRICK-SIZE MASONRY UNITS WITH COMPLETELY FILLED BED AND HEAD JOINTS; BUTTER ENDS WITH SUFFICIENT MORTAR TO FILL HEAD JOINTS AND PRESS INTO PLACE. HEAD AND BED JOINTS SHOULD BE APPROXIMATELY 1/2" WIDE, WITH MORTAR JOINTS FLUSH WITH BRICK. SET BRICK UNITS IN FULL BED OF MORTAR. CLEAN SOILED SURFACES WITH FIBER BRUSH AND SOAP POWDER AND RINSE THOROUGHLY WITH CLEAR WATER. WET JOINT SURFACES THOROUGHLY BEFORE APPLYING MORTAR.
- BRICK MASONRY: LAY OUT BRICKWORK IN ADVANCE FOR ACCURATE SPACING OF SURFACE BOND PATTERNS WITH UNIFORM JOINT THICKNESS AND FOR ACCURATE LOCATION OF RETURNS AND OFFSETS. AVOID USING LESS-THAN-HALF-SIZE UNITS, PARTICULARLY AT CORNERS UNLESS OTHERWISE SHOWN IN DRAWINGS, AND, WHERE POSSIBLE, AT OTHER LOCATIONS. BUILD MASONRY CONSTRUCTION TO THE FULL WALL THICKNESS SHOWN ON DRAWINGS TO MATCH ORIGINAL CONSTRUCTION.
- BOND PATTERN FOR EXPOSED BRICK MASONRY FIRE BOX: LAY EXPOSED MASONRY IN THE RUNNING BOND PATTERN WITH FLUSH JOINTS; DO NOT USE UNITS WITH LESS THAN NOMINAL 4-INCH HORIZONTAL FACE DIMENSIONS AT CORNERS, UNLESS OTHERWISE SHOWN ON DRAWINGS. LAY CONCEALED BRICK MASONRY WITH ALL UNITS IN A WYTHE IN RUNNING BOND OR BONDED BY LAPPING NOT LESS THAN 2 INCHES. BOND AND INTERLOCK EACH COURSE OF EACH WYTHE AT CORNERS. DO NOT USE UNITS WITH LESS THAN NOMINAL 4-INCH HORIZONTAL FACE DIMENSIONS AT CORNERS UNLESS OTHERWISE SHOWN ON DRAWINGS.
- CUT BRICK MASONRY UNITS TO PROVIDE CLEAN, SHARP, UN-CHIPPED EDGES. CUT UNITS AS REQUIRED TO PROVIDE A CONTINUOUS PATTERN. WHERE POSSIBLE, USE FULL-SIZE UNITS WITHOUT CUTTING UNLESS OTHERWISE INDICATED ON DRAWINGS. INSTALL CUT UNITS WITH CUT SURFACES AND, WHERE POSSIBLE, CUT EDGES CONCEALED.

TIMBER FRAME NOTES

- TIMBER FOR FRAME: WHITE OAK (*QUERCUS ALBA*). PROVIDE TIMBER WITH 35 PERCENT MAXIMUM MOISTURE CONTENT AT TIME OF DRESSING MEASURED WITHIN THE OUTER 2" TO 3" OF THE WOOD TIMBER SHALL HAVE AN AVERAGE OF 10 ANNUAL RINGS PER INCH. NO FINGER JOINTING SHALL BE ALLOWED.
- PLANE, ADZE, OR PIT SAW TIMBER TO SQUARED CORNERS. DRESSED DIMENSIONS SHALL NOT BE UNDER THE SIZE INDICATED IN THE DRAWINGS.
- WANEY EDGES ARE PERMITTED PROVIDED THEY DO NOT EXCEED 1/10 OF A FACE. REMOVE BARK, BUT DO NOT SPOKESHAVE OR PLANE WANEY EDGES SMOOTH.
- TIMBERS WITH MODERATE BOW ARE PERMITTED WHERE THEIR INTENDED USE WILL STRAIGHTEN THEM. PLACE CROWNS UP FOR SPANNING MEMBERS. DO NOT USE SEVERELY BOWED TIMBERS OR TIMBERS BOWED IN MORE THAN ONE DIRECTION.
- MORTISE AND TENON JOINTS: CUT MORTISE AND TENON JOINTS SO THERE IS 1/4-INCH-MINIMUM CLEARANCE BETWEEN TENON END AND MORTISE BOTTOM TO ALLOW FOR SHRINKAGE. CUT 1/4-INCH CHAMFERS ON TENONS ON END GRAIN EDGES. CUT JOINTS ACCURATELY TO MAKE A NEAT, SNUG FIT. DRILL PEG HOLES TO PRODUCE A TIGHT FIT AT FINAL ASSEMBLY. WHEN THEIR LOCATION IS NOT INDICATED IN DRAWINGS, LOCATE CENTER LINE OF HOLE 2 INCHES FROM FACE OF MORTISE. OFFSET PEG HOLES ON TENON FROM THOSE IN MORTISE, OR DRAWBORE, SO THAT BY DRIVING A TAPERED PEG THROUGH THE OFFSET HOLES, JOINT WILL BE DRAWN TIGHTLY TOGETHER, OR DRAWPINNED. OFFSET WILL BE 1/8-INCH FOR SOFT WOOD TIMBERS, AND 3/32-INCH FOR HARDWOOD TIMBERS. SAW OFF PEGS PROTRUDING ON EXTERIOR OF FRAME. LEAVE INTERIOR PEGS PROTRUDING. CUT OFF PEGS WITH MUSHROOMED HEADS BELOW DAMAGED AREA.
- COAT HIDDEN GROSSCUTS WITH END SEALER. PRODUCTS: NON-PIGMENTED "ANCHORSEAL" BY U-C COATINGS, LLC, PO BOX 1066, BUFFALO, NY 14215. [UCCOATINGS.COM]
- SCRAPE OR PLANE EXPOSED SURFACES OF TIMBERS TO REMOVE MACHINERY MARKS.
- MODERN LAYOUT MARKS AND MODERN IDENTIFICATION MARKS SHALL NOT BE VISIBLE ON COMPLETED FRAME.
- WOOD PEGS USED AS FASTENERS IN CONNECTIONS MAY BE MILLED OR SHAPED BY HAND FROM CLEAR STRAIGHT GRAIN WHITE OAK STOCK (*QUERCUS ALBA*) SUCH THAT THE RESULTING POLYGONAL PEG HAS A SLOPE OF GRAIN NOT GREATER THAN 1:15. WOOD PEGS SHALL BE POLYGONAL IN CROSS SECTION (MINIMUM 6 SIDES). ENDS SHALL BE PARED BY HAND.
- WOOD PRESERVATIVES: WHERE FRAMING MEMBERS ARE TO BE PRESERVATIVE TREATED, APPLY A FIELD-TREATMENT PRESERVATIVE TO COMPLY WITH AWP4 M4. USE INORGANIC BORON (SBX) TREATMENT FOR MEMBERS NOT IN CONTACT WITH THE GROUND AND CONTINUOUSLY PROTECTED FROM LIQUID WATER. USE COPPER NAPHTHENATE TREATMENT FOR MEMBERS IN CONTACT WITH THE GROUND OR NOT CONTINUOUSLY PROTECTED FROM LIQUID WATER, BUT ONLY IN LOCATIONS ENTIRELY HIDDEN FROM VIEW IN THE FINISHED BUILDING.
- INSTALLATION: ERECT HEAVY TIMBER CONSTRUCTION TRUE AND PLUMB. PROVIDE TEMPORARY BRACING TO MAINTAIN LINES AND LEVELS UNTIL PERMANENT SUPPORTING MEMBERS ARE IN PLACE. HANDLE AND TEMPORARILY SUPPORT HEAVY TIMBER CONSTRUCTION TO PREVENT SURFACE DAMAGE, COMPRESSION, AND OTHER EFFECTS THAT MIGHT INTERFERE WITH INDICATED FINISH. TOOLS USED TO DRIVE OR PULL JOINTS TOGETHER SHALL NOT MAR FINISHED SURFACE OF TIMBER. INSTALL HORIZONTAL AND SLOPING MEMBERS WITH CROWN EDGE UP, AND PROVIDE NOT LESS THAN 4 INCHES OF BEARING ON SUPPORTS. FRAMING ADJACENT TO MASONRY: PROVIDE 1 INCH CLEARANCE AT TOPS, SIDES, AND ENDS OF MEMBERS ADJACENT TO MASONRY UNLESS OTHERWISE INDICATED.
- CUTTING: AVOID EXTRA CUTTING AFTER FABRICATION. WHERE FIELD FITTING IS UNAVOIDABLE, COMPLY WITH FINISH AND PRESERVATIVE TREATMENT REQUIREMENTS FOR SHOP FABRICATION.
- NAILS: USE HAND-FORGED ROSE HEAD NAILS OF WROUGHT IRON (NOT PURE IRON, NOT MILD STEEL) WHERE VISIBLE IN FINISHED CONSTRUCTION. USE STAINLESS STEEL FASTENERS WHERE HIDDEN IN FINISHED CONSTRUCTION.

ROOFING AND SIDING NOTES

- SIDING AND ROOFING: WHITE OAK (*QUERCUS ALBA*) RIVEN CLAPBOARDS. MOISTURE CONTENT: 17 PERCENT MAXIMUM. WOOD SHALL HAVE A MINIMUM OF 10 ANNUAL RINGS PER INCH. NO FINGER JOINTING SHALL BE ALLOWED.
- FABRICATION:
- NAILS: USE HAND-FORGED ROSE HEAD NAILS OF WROUGHT IRON (NOT PURE IRON, NOT MILD STEEL) WHERE VISIBLE IN FINISHED CONSTRUCTION. USE STAINLESS STEEL FASTENERS WHERE HIDDEN IN FINISHED CONSTRUCTION.
- INSTALLATION: INSTALL CLAPBOARDS TRUE AND PLUMB.
- FLASHING: 6 LB. LEAD FOR CHIMNEY CAPS AND CHIMNEY CRICKET. 3 LB. LEAD FOR DOOR AND WINDOW CAPS.

MILLWORK NOTES

- FLOORING: LONGLEAF SOUTHERN YELLOW PINE (*PINUS PALUSTRIS*), 5-8 INCH WIDTHS, WITH NO SAP WOOD OR SPIKE KNOTS, HAVING AT LEAST 10 ANNUAL RINGS PER INCH. NO FINGER-JOINTING SHALL BE ALLOWED. MOISTURE CONTENT NOT TO EXCEED 19% AT TIME OF DRESSING.
- DOOR, DOOR FRAME, WINDOWS, WINDOW FRAMES, AND BOARD TRIM: AS ABOVE IN NOTE 1, EXCEPT MOISTURE CONTENT SHALL BE LESS THAN 23% AT TIME OF DRESSING.
- LUMBER SIZES ARE ACTUAL DIMENSIONS AT TIME OF FABRICATION. PLANE, ADZE, OR OTHERWISE DRESS TIMBER TO SQUARE, UNIFORM DIMENSIONS. DRESSED DIMENSIONS SHALL NOT BE UNDER THE SIZE INDICATED IN THE DRAWINGS.
- SCRAPE OR PLANE EXPOSED SURFACES OF LUMBER TO REMOVE MACHINERY MARKS.
- LAYOUT MARKS AND IDENTIFICATION MARKS SHALL NOT BE VISIBLE ON COMPLETED MILLWORK.
- WOOD WEDGES USED TO SECURE THROUGH-TENONS: WOOD WEDGES SHALL BE FABRICATED FROM CLEAR STRAIGHT GRAINED WHITE OAK (*QUERCUS ALBA*) STOCK. WOOD WEDGES SHALL BE FABRICATED TO MINIMIZE SLOPE OF GRAIN. SLOPE OF GRAIN SHALL NOT BE GREATER THAN 1:6 RELATIVE TO THE FACE OF THE WEDGE.
- WOOD PRESERVATIVES: WHERE FRAMING MEMBERS ARE TO BE PRESERVATIVE TREATED, APPLY A FIELD-TREATMENT PRESERVATIVE TO COMPLY WITH AWP4 M4. USE INORGANIC BORON (SBX) TREATMENT FOR MEMBERS NOT IN CONTACT WITH THE GROUND AND CONTINUOUSLY PROTECTED FROM LIQUID WATER. USE COPPER NAPHTHENATE TREATMENT FOR MEMBERS IN CONTACT WITH THE GROUND OR NO CONTINUOUSLY PROTECTED FROM LIQUID WATER.
- INSTALLATION: INSTALL MILLWORK TRUE AND PLUMB. HANDLE MILLWORK TO PREVENT SURFACE DAMAGE, COMPRESSION, AND OTHER EFFECTS THAT MIGHT INTERFERE WITH INDICATED FINISH.
- CUTTING: AVOID EXTRA CUTTING AFTER FABRICATION. WHERE FIELD FITTING IS UNAVOIDABLE, COMPLY WITH FINISH AND PRESERVATIVE TREATMENT REQUIREMENTS FOR SHOP FABRICATION.
- NAILS: USE HAND-FORGED ROSE HEAD NAILS OF WROUGHT IRON (NOT PURE IRON, NOT MILD STEEL) WHERE VISIBLE IN FINISHED CONSTRUCTION. USE STAINLESS STEEL FASTENERS WHERE HIDDEN IN FINISHED CONSTRUCTION.

EXTERIOR WEATHER RESISTANT FINISH NOTES

- CLAPBOARD SIDING, TRIM, WINDOWS, DOOR, AND CLAPBOARD ROOFING: COAT WITH TWO COATS OF TAR (PINE TAR TURPENTINE AND SPANISH BROWN PIGMENT).
- TAR SHALL BE APPLIED HOT, BUT NOT BOILING.
- APPLY ONE ADDITIONAL COAT AFTER SIX MONTHS, AND ANOTHER AFTER ONE YEAR.

MESICK
COHEN
WILSON
BAKER
architects

388 BROADWAY
ALBANY, NY 12207
p. (518)433-9394
f. (518)433-9397

5525 OLD TOWNE RD.
SUITE B
WILLIAMSBURG, VA 23188
p. (757)221-0713
f. (757)221-0714

CONSULTANTS

TRAP DOOR DETAILS AND CONSTRUCTION NOTES

SLAVE QUARTERS EXHIBIT AT
GEORGE WASHINGTON'S FERRY FARM
GEORGE WASHINGTON FOUNDATION
268 KINGS HIGHWAY, FREDERICKSBURG, VIRGINIA 22405

NOT FOR
CONSTRUCTION

PLOTTED BY:

REVISIONS

SCALE

AS SHOWN

COMMISSION NO.

202006

DRAWN BY

JSM

DATE

08-04-2020

A-7

DRAWING NO.