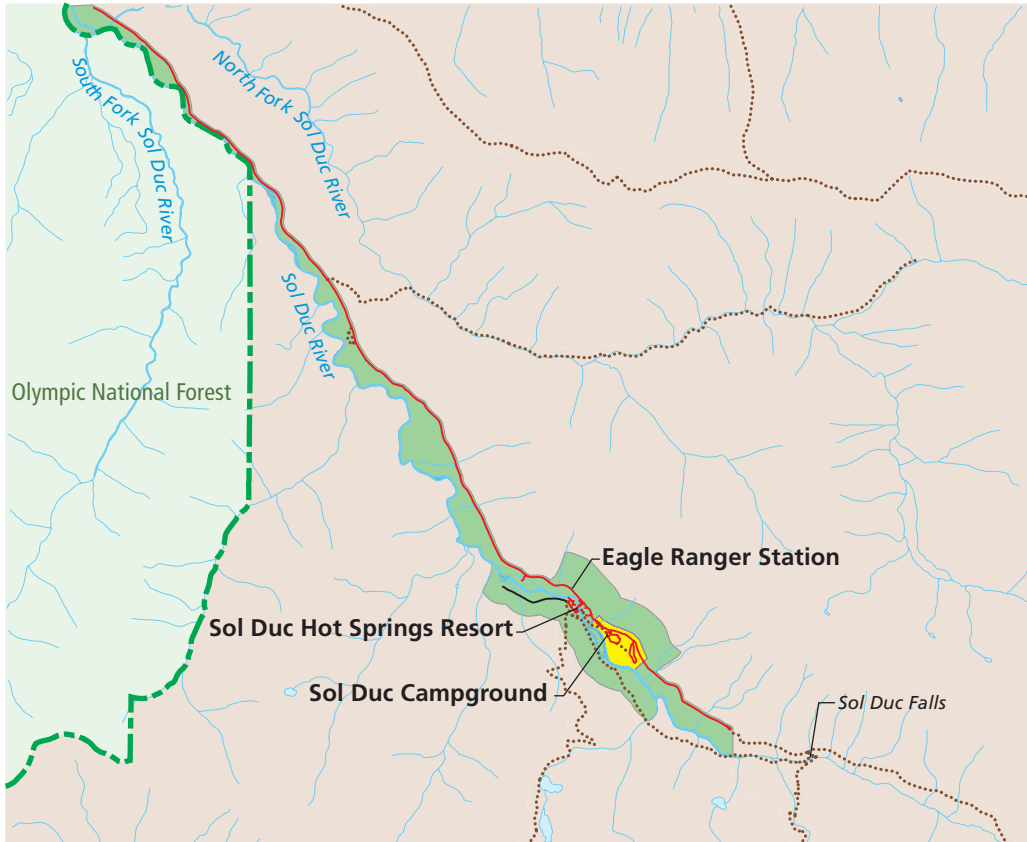


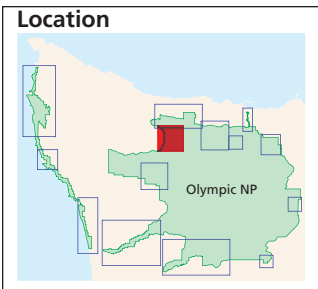
Sol Duc Alternative B - Resource Protection Emphasis



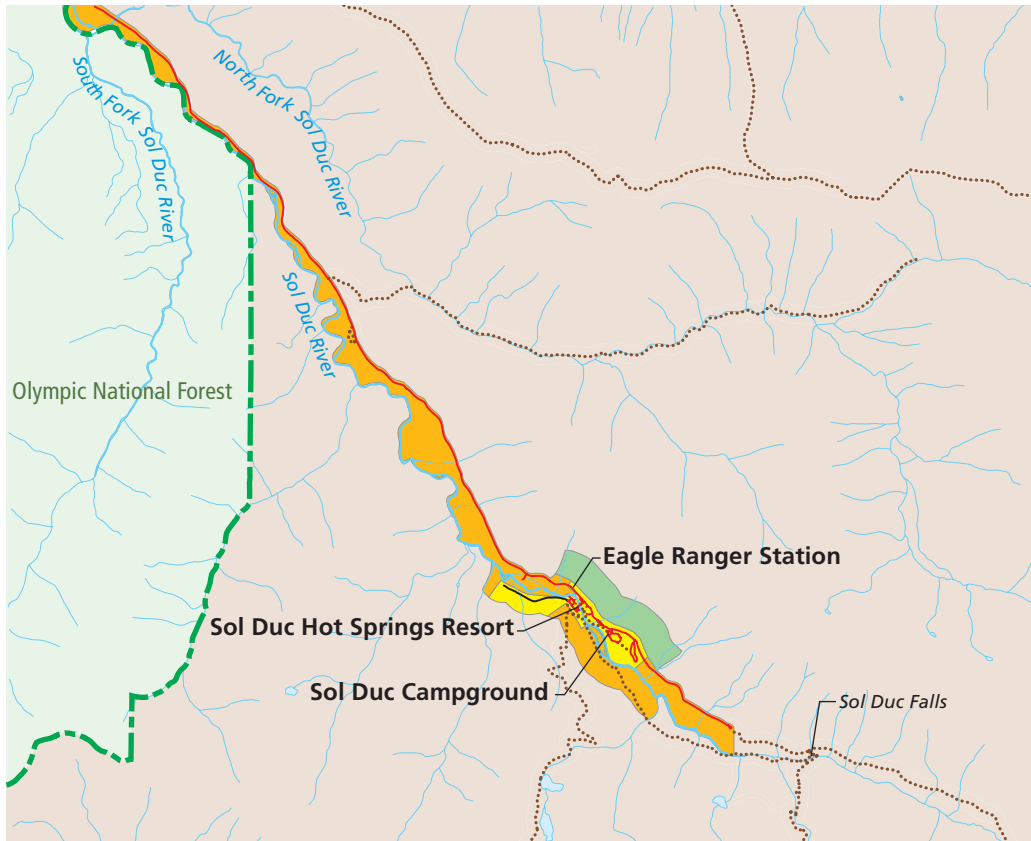
1. The Sol Duc Hot Springs Resort would be closed and the area would be restored.
2. Seasonal road access would be retained unless threatened by river movement, and then options would be explored for alternative access and could include a primitive road, mandatory transit, multipurpose trails, etc.
3. The current size and function of facilities (e.g., campground and park operations areas) would be reduced.
4. Wilderness trail access would be retained.

Legend

- | | |
|--|--|
| Low Use Zone | NPS Boundary |
| Development Zone | Trail |
| NPS Wilderness | Paved road |
| | Unpaved road |
| | USFS |



Sol Duc Alternative C - Visitor Opportunities Emphasis



- 1.** The Sol Duc Hot Springs Resort facilities would be expanded and improved, and the resort season would be extended to year-round operation if economically feasible.
- 2.** Year-round road access would be provided and improved. An optional seasonal transit system would be studied, and implemented if feasible.
- 3.** The current size and function of facilities (e.g., campground and park operations areas) would be redesigned, enlarged, and improved.
- 4.** Wilderness trail access would be retained and the frontcountry trail network would be improved. An existing frontcountry trail would be converted to be universally accessible.

Legend

 Low Use Zone	 NPS Boundary
 Day Use Zone	 Trail
 Development Zone	 Paved road
 NPS Wilderness	 Unpaved road
	 USFS

