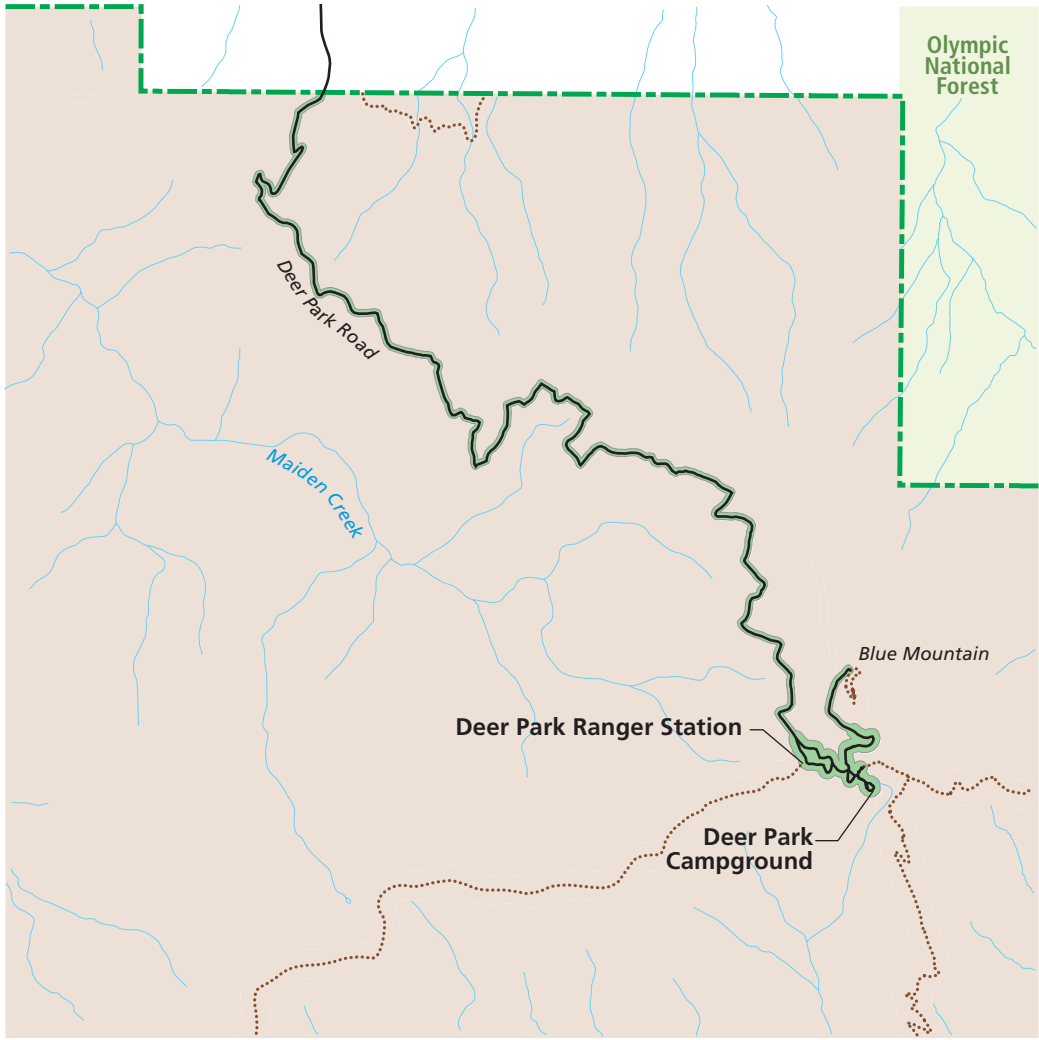


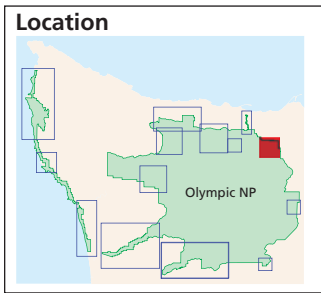
Deer Park Alternative A - Current Management



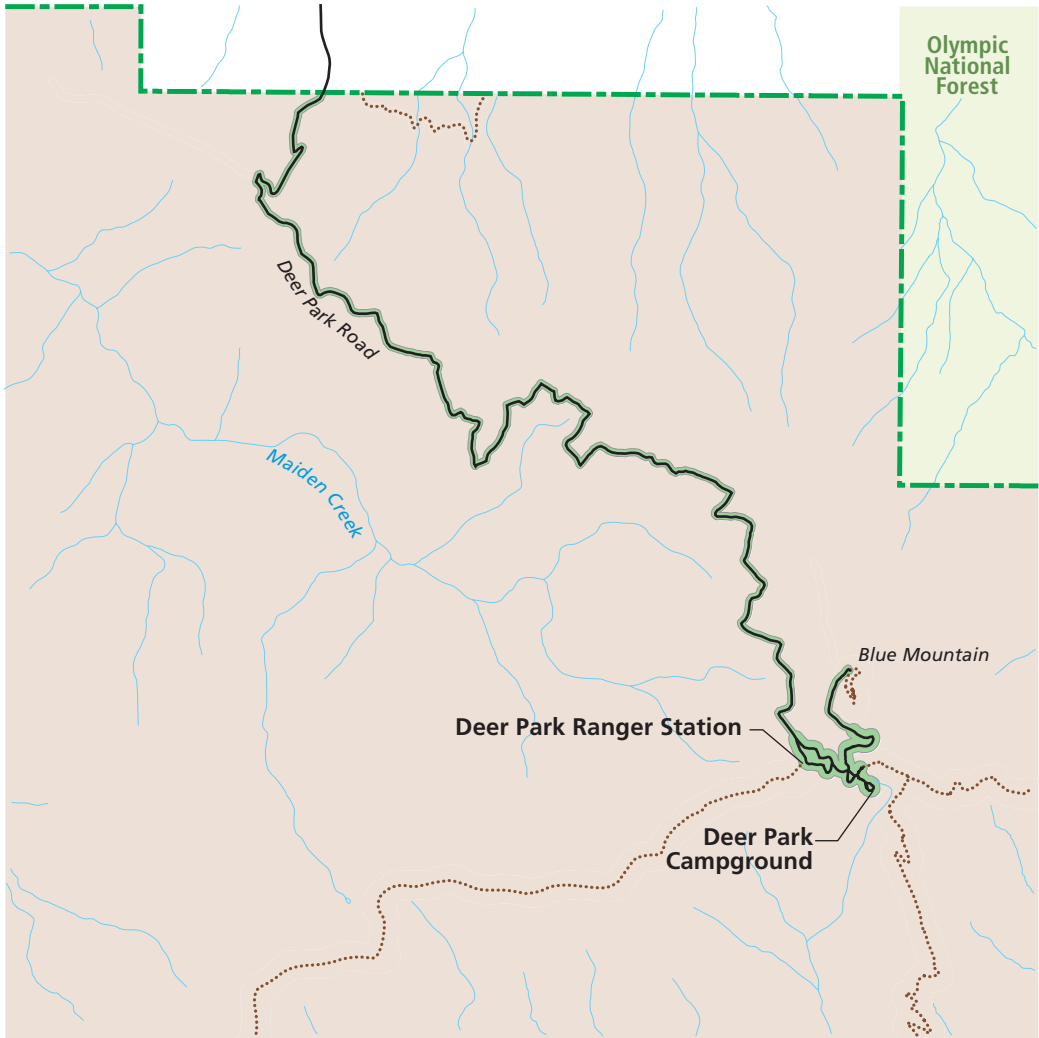
1. The unpaved road would be retained and open seasonally.
2. The ranger station and campground would be open seasonally.

Legend

- Low Use Zone
- NPS Wilderness
- NPS Boundary
- Trail
- Paved road
- Unpaved road
- USFS



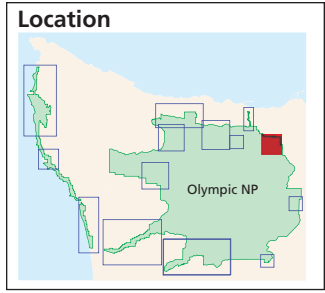
Deer Park Alternative B - Resource Protection Emphasis



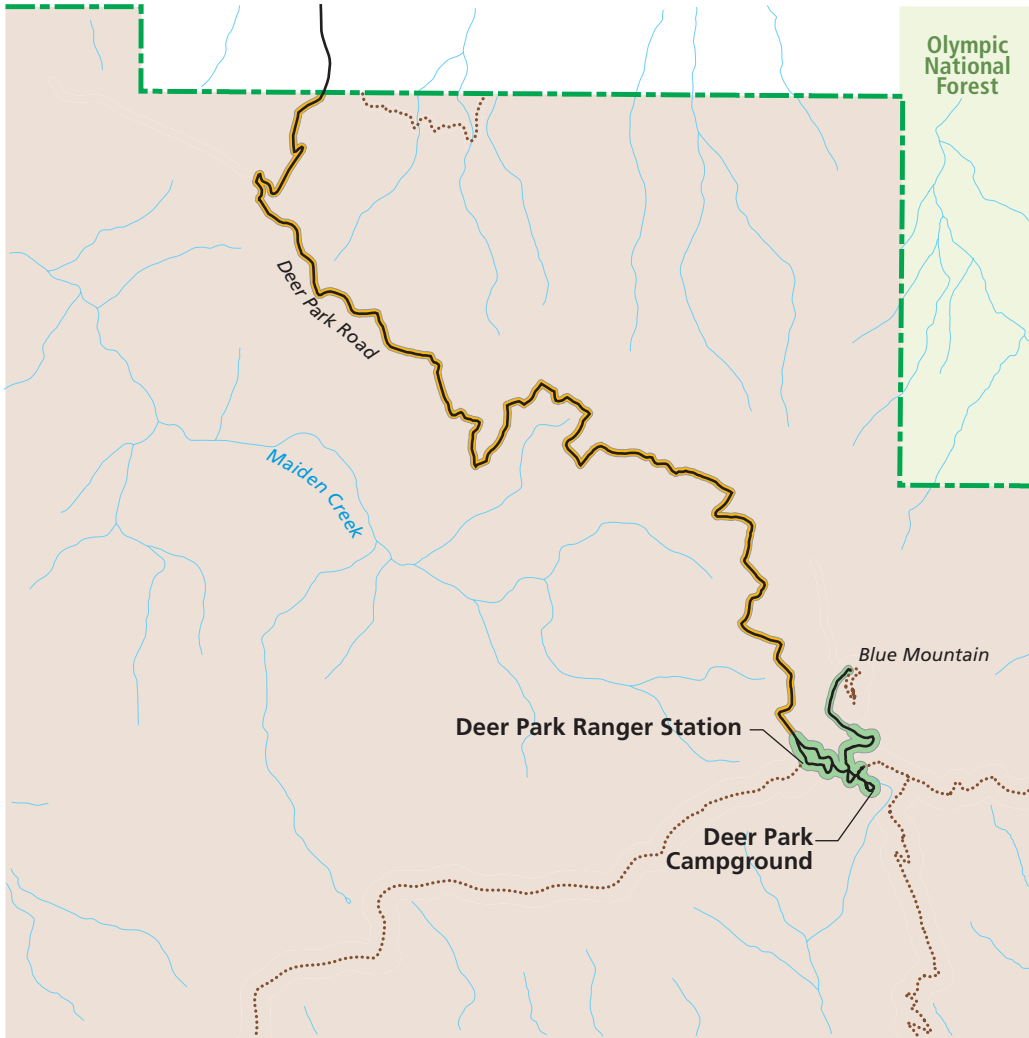
1. The unpaved road would be retained and open seasonally.
2. The ranger station would be eliminated and the campground would be reduced or eliminated.

Legend

- | | |
|--|--|
|  Low Use Zone |  NPS Boundary |
|  NPS Wilderness |  Trail |
| |  Paved road |
| |  Unpaved road |
| |  USFS |



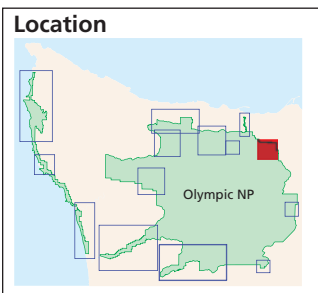
Deer Park Alternative C - Visitor Opportunities Emphasis



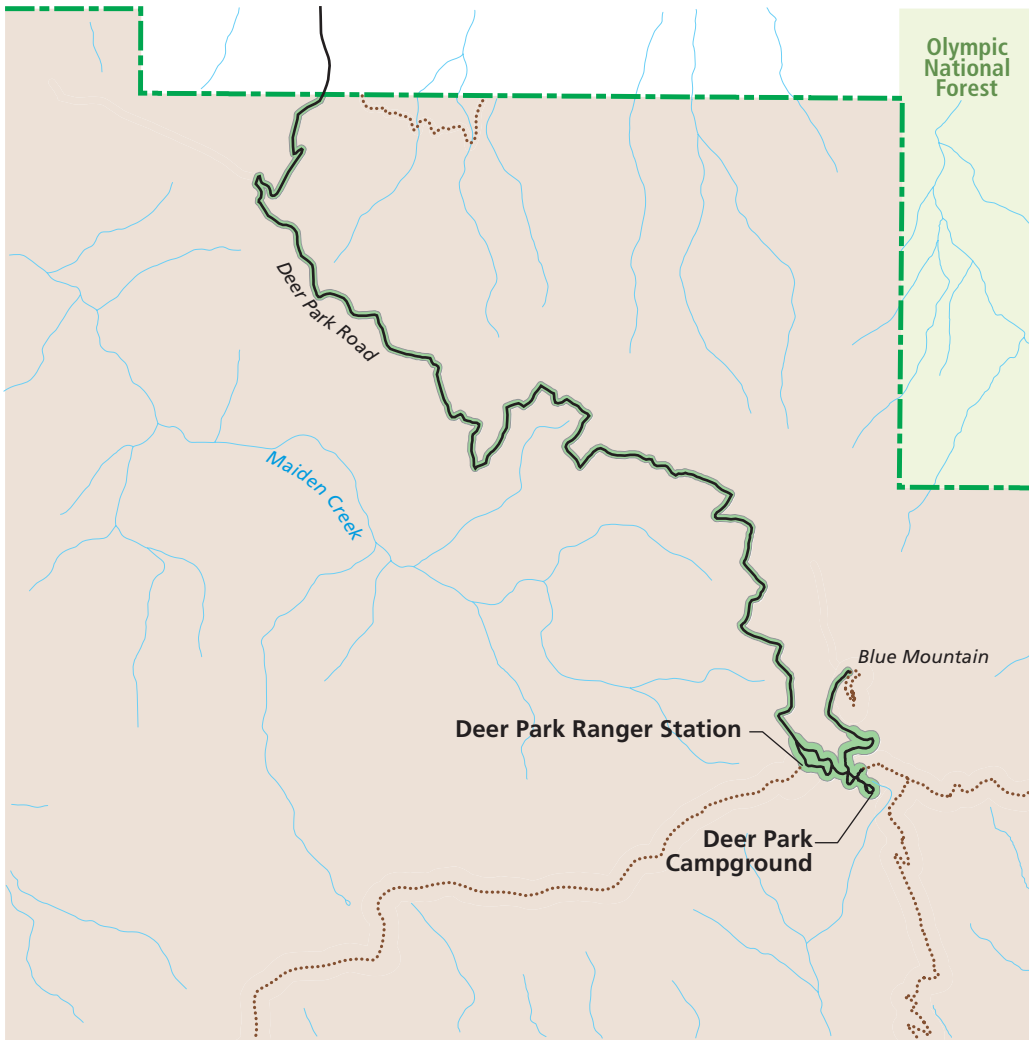
1. The road would be paved and open year-round.
2. The ranger station would be retained and campground would be expanded.

Legend

 Low Use Zone	 NPS Boundary
 Day Use Zone	 Trail
 NPS Wilderness	 Paved road
	 Unpaved road
	 USFS



Deer Park Alternative D - Preferred Alternative



1. The unpaved road would be retained and open seasonally.
2. The ranger station and campground would be open seasonally.

Legend

- | | |
|--|--|
|  Low Use Zone |  NPS Boundary |
|  NPS Wilderness |  Trail |
| |  Paved road |
| |  Unpaved road |
| |  USFS |

