

*

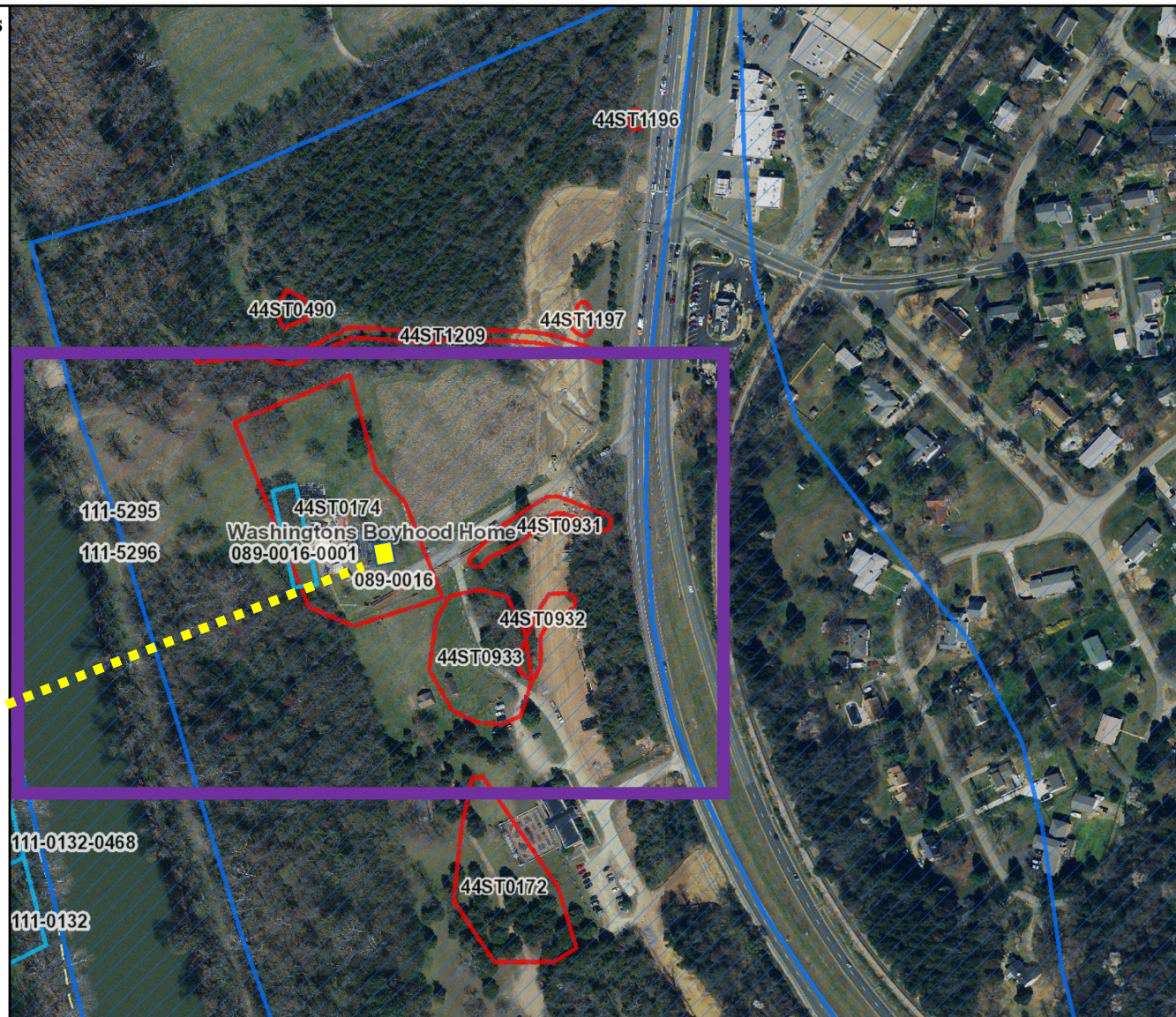
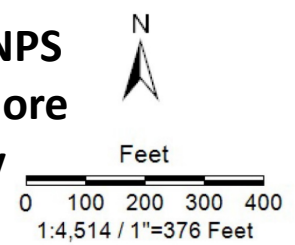
Legend

- Architecture Resources
- Architecture Labels
- Individual Historic District Properties
- Archaeological Resources
- Archaeology Labels
- DHR Easements
- USGS GIS Place names
- County Boundaries

APE (potential viewsheds as well as footprint of investigation)

footprint (approx.) of proposed archeological investigation

*See attached "APE NPS Mapping" map for more recent aerial imagery



Title:	Date: 4/16/2021
<small>DISCLAIMER: Records of the Virginia Department of Historic Resources (DHR) have been gathered over many years from a variety of sources and the representation depicted is a cumulative view of field observations over time and may not reflect current ground conditions. The map is for general information purposes and is not intended for engineering, legal or other site-specific uses. Map may contain errors and is provided "as-is". More information is available in the DHR Archives located at DHR's Richmond office.</small>	
<small>Notice if AE sites: Locations of archaeological sites may be sensitive the National Historic Preservation Act (NHPA), and the Archaeological Resources Protection Act (ARPA) and Code of Virginia §2.2-3705.7 (10). Release of precise locations may threaten archaeological sites and historic resources.</small>	