



# **National Park Service Community Involvement Plan**

---

**Vogelsang Former Waste Disposal Area Site  
Yosemite National Park  
NPS Pacific West Region  
February, 2021**



**Revision Log:**

Revision #	Revision Date	Revision Description
1	2/26/2021	Revise newspaper of record, PAO title per YOSE NPS Public & Legislative Affairs staff comments.





## TABLE OF CONTENTS

<b>Table of Contents .....</b>	<b>i</b>
LIST OF FIGURES .....	i
LIST OF APPENDICES .....	i
<b>List of Abbreviations and Acronyms .....</b>	<b>v</b>
<b>1.0 Introduction.....</b>	<b>1</b>
1.1 Purpose and Objectives of the CIP .....	1
1.2 Comprehensive Environmental Response, Compensation, and Liability Act (CERCLA) .....	2
1.3 Overview of the CIP .....	3
<b>2.0 Project Background.....</b>	<b>4</b>
2.1 Site Description and History .....	4
2.2 Previous Environmental Studies and Response Actions .....	4
2.3 Current and Future Site Activities .....	5
<b>3.0 Community Background.....</b>	<b>6</b>
3.1 Community Profile.....	6
3.2 Community Involvement History .....	7
3.3 Community Concerns and Needs.....	7
3.3.1 Community Awareness of the Site .....	7
3.3.2 Community Concerns and Needs.....	8
3.3.3 Community Preferences for Receiving Site Information.....	9
<b>4.0 Planned Community Involvement Activities.....</b>	<b>11</b>
4.1 Communication Methods and Community Involvement Activities .....	11
4.2 Community Involvement Activity Schedule .....	15
<b>5.0 References.....</b>	<b>17</b>

### LIST OF FIGURES

Figure 1          Site Location Map

### LIST OF APPENDICES

Appendix A	Glossary
Appendix B	Administrative Record File and Information Repository Details
Appendix C	Community Fact Sheets and Community Updates
Appendix D	Community Interview Questionnaire
Appendix E	Contact Information
Appendix F	Community Involvement Requirements





## LIST OF ABBREVIATIONS AND ACRONYMS

BGS	Below ground surface
CERCLA	Comprehensive Environmental Response, Compensation, and Liability Act
CIP	Community Involvement Plan
DTSC	Department of Toxic Substance Control
EE/CA	Engineering Evaluation / Cost Analysis
EPA	U.S. Environmental Protection Agency
ESI	Expanded Site Inspection
FSI	Focused Site Inspection
FWDA	Former Waste Disposal Area
HSC	High Sierra Camp
NCP	National Oil and Hazardous Substances Pollution Contingency Plan
NPS	National Park Service
PAH	polycyclic aromatic hydrocarbons
RFA	RCRA Facility Assessment



## 1.0 INTRODUCTION

The National Park Service (NPS) is issuing this *Community Involvement Plan* (CIP) as a resource to enable meaningful community involvement throughout its investigation, selection, and implementation of cleanup activities at the Vogelsang Former Waste Disposal Area (FWDA) (Site). The NPS is conducting these cleanup activities at the Site pursuant to the *Comprehensive Environmental Response, Compensation, and Liability Act* (CERCLA), 42 U.S.C. §§ 9601, *et seq.* and its implementing regulations under the *National Oil and Hazardous Substances Pollution Contingency Plan* (NCP), 40 C.F.R. Part 300. NPS is committed to encouraging public participation and providing opportunities for communication between the NPS and the affected community, interested stakeholders, and community residents during the environmental investigation and cleanup activities at the Site.

CERCLA-related terms are defined in Appendix A, Glossary.

### 1.1 Purpose and Objectives of the CIP

The CIP has been prepared in accordance with CERCLA and the NCP. The CIP serves as a guide for the NPS to engage and inform community members, environmental groups, government officials, the media, and other interested parties in the environmental investigation and cleanup activities at the Site. The CIP is a “living” document and will be updated or revised, as appropriate, as Site conditions change.

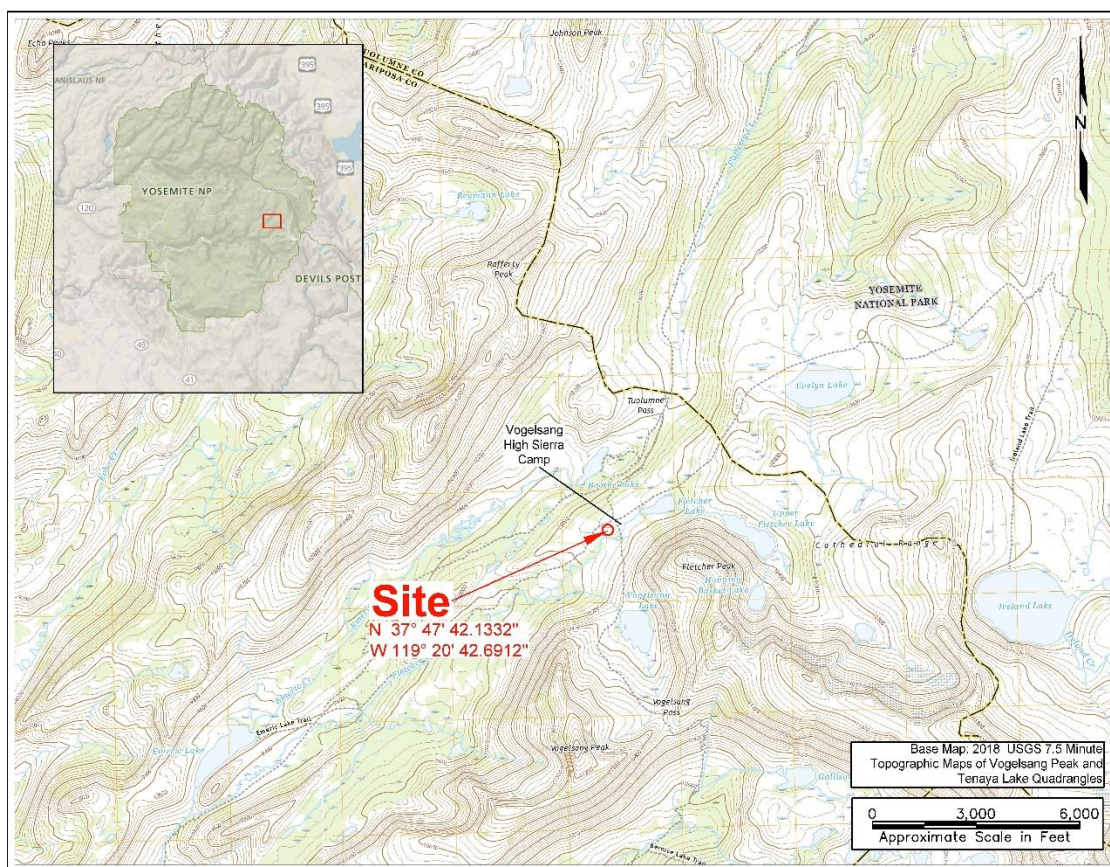
The CIP has two key objectives. The first key objective is to provide for the dissemination of information to the public in a timely, accurate, meaningful, and understandable manner. The second objective is to create opportunities—and ensure the community understands those opportunities—for active public participation, enabling interested persons to provide valuable comments that can be used by the NPS project team for planning and decision making.

The strategies to accomplish these objectives take into consideration the location of the Site and surrounding community. The Site is located Yosemite National Park (the Park), in Mariposa County in the state of California (CA) (Figure 1). The Site is located within the eastern portion of the Park, approximately 100 feet southwest of the Vogelsang High Sierra Camp (HSC), one of the backcountry camping areas in the Park. Vogelsang HSC is located at latitude 37° 47' 42.1332" North and 119° 20' 42.6912" West.





Figure 1. Site Map



## 1.2 Comprehensive Environmental Response, Compensation, and Liability Act (CERCLA)

The NPS is investigating and cleaning up the Site pursuant to CERCLA and the NCP. Congress enacted CERCLA, also known as Superfund, in 1980 to address releases and threatened releases of hazardous substances into the environment. CERCLA gives the President broad powers to respond to hazardous substance releases and threatened releases as the President deems necessary to protect the public health or welfare or the environment, including enforcement authority with respect to parties responsible for the releases. The President has delegated this authority to a number of federal departments and agencies, including the Department of the Interior. The NPS, an agency within the Department of the Interior, is the CERCLA lead agency for the Site.

To implement CERCLA, the U.S. Environmental Protection Agency (EPA) created the NCP, which is a set of regulations that detail how CERCLA cleanups are to be conducted, including requirements for community involvement activities. Different requirements apply to different types of response actions. The NPS has determined that a non-time-critical removal action is appropriate for the Site.





A non-time-critical removal action is being conducted at the Site based on NPS's determination that a planning period of six months or more is available prior to the start of removal activities at the Site because no immediate threat to public health or welfare or the environment is present at the Site. As part of the non-time-critical removal action, NPS is conducting an engineering evaluation and cost analysis to fully characterize the nature and extent of Site contamination, evaluate associated potential risks to human health and safety and the environment, identify relevant cleanup requirements, develop a range of cleanup alternatives, and identify a recommended removal action alternative for the Site. As the lead agency for the Site, NPS must involve the community during the engineering evaluation and cost analysis process in the manner detailed in the NCP, and this CIP is part of that community involvement process.

### **1.3 Overview of the CIP**

The CIP specifies the community involvement activities that the NPS expects to undertake as investigation and cleanup of the Site proceeds. This CIP is organized as follows:

- Section 1.0: Introduction – A description of the purpose of the CIP.
- Section 2.0: Site Background – An overview of Site description and history, previous Site investigations, and current and future Site activities.
- Section 3.0: Community Background – A community profile, history of community involvement at the Site, and summary of community concerns and questions.
- Section 4.0: Community Involvement Activities – A description of planned methods and activities for communicating with the public concerning Site activities, and a general schedule of anticipated community involvement activities.
- Section 5.0: References – A list of references used in developing this CIP.

The appendices include a glossary (Appendix A), administrative record file and information repository details (Appendix B), community fact sheets and community updates (Appendix C), community interview questionnaire (Appendix D), contact information (Appendix E), and tables of minimum community involvement requirements (Appendix F).



## 2.0 PROJECT BACKGROUND

### 2.1 Site Description and History

The preliminary Site boundary encompasses roughly 8,254 ft<sup>2</sup> of subalpine land and is located approximately 350 feet southwest of the Vogelsang High Sierra Camp (HSC) cookhouse, at an elevation of 10,300 feet above sea level. The Site is accessed through an approximately 7.3-mile hike along the Rafferty Creek Trail via the parking lot for John Muir Trail near the Tuolumne Lodge located off of Highway 120 in the Tuolumne Meadows area of the Park. The Vogelsang HSC was established in 1940 as a high elevation camping location for hikers and backpackers within the Park. The Vogelsang HSC consists of 12 total guest cabins for a maximum capacity of 42 guests. Vogelsang HSC is located at latitude 37° 47' 42.1332" North and 119° 20' 42.6912" West.

The Site consists of grassy area of lodgepole pine trees and willow shrubs, located between granite outcrops. The Site itself is located just south of the Vogelsang HSC horse corral area and approximately 350 feet northeast of Fletcher Creek. Topography in the vicinity of the Site slopes gently to the south-southwest, towards Fletcher Creek. Seasonal surface water drainage extends northeast-southwest through the central portion of the Site.

The Site was historically used as a waste disposal area for the Vogelsang HSC, with waste disposal activities reportedly occurring primarily between 1940 and 1965. Waste and debris found at the Site has consisted of crushed and rusted metal cans, metal household objects, broken glass, and broken china. Debris associated with the historical waste disposal activities has primarily been discovered in small discrete piles, extending to depths less than 4 feet below ground surface (bgs), distributed throughout the Site. Surficial evidence of debris including glass, china, and metal debris is also visible throughout the Site. Soil sampling conducted throughout the Site discovered elevated concentrations of metals, petroleum, dioxins, and polycyclic aromatic hydrocarbons (PAHs) in surface and subsurface soils within the Site, associated with the historical waste disposal activities. Due to the location of the Site within the Park and proximity to the Vogelsang HSC, there is the potential for both human and ecological exposure to contaminated surficial and subsurface soils.

### 2.2 Previous Environmental Studies and Response Actions

In 1998, California Department of Toxic Substances Control (DTSC) performed a Resource Conservation and Recovery Act (RCRA) Facility Assessment (RFA) for multiple sites located throughout Yosemite National Park, including the Site.

In 2001, NPS entered into a consent agreement with DTSC and agreed to determine the nature and extent of contamination at various sites throughout Yosemite National Park, including the Site. Under the agreement, NPS is exercising its CERCLA lead agency authority, and DTSC is exercising its RCRA corrective action authority.

In 2002, IT Corporation completed a Focused Site Inspection (FSI) Report for the Site (IT Corporation, 2002). The report investigated the lateral and vertical extent of the surficial and



subsurface debris at the Site. Soil samples were collected from test pits advanced throughout the Site and immediate vicinity and found concentrations of potential contaminants greater than preliminary screening levels. The report recommended that additional investigation be conducted at the Site to better define the nature and extent of potential impacts to soil at the Site.

In 2019, CDM Smith completed an Expanded Site Inspection (ESI) Report for the Site (CDM, 2019). In the report, additional investigation was performed at the Site to delineate the extent of impacts the soil. The 2019 ESI Report concluded that elevated concentrations of metals, petroleum, dioxins, and PAHs, pose a potential risk to human and ecological receptors and appear to be related to historical waste disposal activities at the Site.

### **2.3 Current and Future Site Activities**

The NPS entered into a consent agreement with DTSC and agreed to determine the nature and extent of contamination at the Site. To move forward with addressing contamination at the Site, NPS is conducting an engineering evaluation and cost analysis (EE/CA). The EE/CA will use information from previous environmental investigations to fully characterize the nature and extent of Site contamination and evaluate associated potential risks to human health and safety and the environment. The EE/CA will identify relevant cleanup requirements, develop a range of cleanup alternatives and assess them against the identified cleanup requirements, and identify a recommended removal action alternative for the Site.



### 3.0 COMMUNITY BACKGROUND

#### 3.1 Community Profile

The community profile is intended to help the NPS and its contractors understand local issues and people, which is key to developing a communication strategy tailored to needs and interests of the community near the Site. The focus is on identifying communication opportunities and constraints. This includes identifying languages spoken and whether there is a need for translation; unique cultural patterns, customs, or values reflected in the use of park; and attributes that might inform the selection of methods to facilitate community involvement in site cleanup, and those that could be important in the conduct of the removal action.

The Site is located in a relatively remote area in the eastern portion of Yosemite National Park. Due to the remote nature of the Site, one of the primary characteristics influencing the community profile is tourism. In 2019, a reported 4,422,861 people visited Yosemite National Park (NPS, 2021). According to a 2009 survey of park visitors, 75% of park visitors surveyed were from the United States, and 25% of visitors were international visitors. Of the 75% visitors from the United States, 62% were from the State of California. During the 2009 survey, 92% of respondents stated that they obtained information about the park prior to visiting, with 51% obtaining information from the Park website. 92% of the respondents stated that English was their preferred language of written communication, with German, Spanish, and French being the three most popular languages preferred other than English (NPS, 2009).

Due to the relatively remote location of the Site, only a small portion of those that visit the Park will also visit the Vogelsang HSC, the primary attraction in the vicinity of the Site. Vogelsang HSC is only accessible to foot traffic, with the primary users being hikers, backpackers, guests of the Vogelsang High Sierra Camp, and employees of the Park concessionaire running the High Sierra Camps. According to the 2009 survey, 54% of respondents stated that they participated in day hiking during their visit to the park, and in 2019, only 3.5% of Park visitors participated in backcountry camping (NPS, 2021). According to Aramark, the Park concessionaire who manages the High Sierra camps, more than 13,000 people stay at the High Sierra Camps each year, and several thousand backpackers stop by the camps for meals (Aramark, 2021). In addition to visitors to the area, Vogelsang HSC is also staffed by Aramark employees, and is occasionally visited by NPS staff.

There is no specific trail to the Site itself, and there are no amenities within the Site boundaries. However, the site is located approximately 100 feet southwest of the Vogelsang HSC corral and is approximately 75 feet east-southeast from the trail to Merced Lake.

A number of Indian nations or tribes are stakeholders in the natural resources of Yosemite National Park and the surrounding area. These include: Tuolumne Band of Me-Wuk Indians, Mono Lake Kutzadika, North Fork Rancheria of Mono Indians of California, Bridgeport Indian Colony, Bishop Paiute Tribe, Picayune Rancheria of the Chukchansi Indians, and the American Indian Council of Mariposa (the Southern Sierra Miwuk Nation). With assistance from



Park tribal liaison staff, these groups are being contacted to solicit their participation in the community involvement process.

### **3.2 Community Involvement History**

The NPS has established an information repository in El Portal that houses the administrative record file (see Section 4.1 below for further detail). An information repository is a location open to members of the general public where they may review and make copies of documents (including the administrative record file) relevant to the Site. The administrative record is a file that contains all information used by the lead agency to make its decision on the selection of a response action. The address, contact information, and operating hours for the information repository are provided in Appendix B

### **3.3 Community Concerns and Needs**

Identifying community concerns and issues is a vital step in the CIP's development, and it is important that the public be asked for recommendations on how NPS can most effectively involve and communicate with the community. To identify community concerns and needs and to identify how and when citizens would like to be involved in the cleanup process, in January 2021, NPS conducted community interviews with local officials, community residents, and various environmental and special interest groups who represent a range of opinions and backgrounds. NPS asked interviewees for suggestions of additional groups or individuals the NPS should interview, and NPS contacted those suggested additional groups and individuals before developing this CIP as well. An interview response summary is provided below, and the list of interview questions is provided in Appendix D, Community Interview Questionnaire.

NPS conducted a total of four community interviews with one representative from the following stakeholder groups:

- The Sierra Club California Conservation Committee
- The Tehipite Chapter of the California Sierra Club
- The Merced Group of the Tehipite Chapter of the California Sierra Club
- The Central Sierra Environmental Resource Center

In addition, the Yosemite Conservancy and the Mariposa County Environmental Health Department declined to participate in an interview. The NPS obtained much of the information in Section 3.0, Community Background, from the community interviews.

#### **3.3.1 Community Awareness of the Site**

All of the respondents were aware of the general area of the Site due to the proximity to the Vogelsang HSC, however none of the respondents were previously aware of any environmental issues present at the Site. All of the respondents expressed a moderate to high level of interest and concern regarding the environmental issues present at the Site. On a scale of 1 to 10, with 10 representing the highest level of concern, the average level of concern regarding





the Site was an 8.25. The majority of respondents expressed that the primary driving force behind their level of concern was the potential for both human and ecological exposure due to the Site's location in the backcountry and proximity to Vogelsang HSC. Another listed concern was the potential for soil contamination to adversely impact surface water and migrate off Site.

### **3.3.2 Community Concerns and Needs**

As noted in Section 3.3.1, on a scale of 1 to 10 the average level of concern regarding the current status of the Site was an 8.25. In addition to their concerns regarding the current status of the Site, the interviewees were also asked if they had any concerns about any potential cleanup efforts at the Site in the future. The interviewees all responded that seeing the Site successfully remediated and returned to its natural state were a high priority. Both the Central Sierra Environmental Resource Center and the Merced Group of the Tehipite Chapter of the California Sierra Club expressed concerns regarding the logistics of the cleanup effort at the Site due to the remote nature and accessibility. All of the respondents expressed concerns about potential disruptions to the hiking trails, surrounding natural aesthetic, and to the Vogelsang HSC that any cleanup efforts may have.

Two of the interviewees responded that they had previously engaged with NPS regarding similar clean up sites. The Central Sierra Environmental Resource Center stated that they have engaged with NPS on various projects in the Park over a 30 year period and The Sierra Club California Conservation Committee stated that they had previously been in communication with NPS regarding a cleanup project in Tuolumne Meadows. Both parties stated that in their experience, communication with NPS was effective and their opinions of NPS was positive. The Merced Group of the Tehipite Chapter of the California Sierra Club stated that while they have not specifically worked with NPS on any cleanup sites, they have been actively involved in the Merced River Plan, the Tuolumne River Plan, and various other Park projects. The Tehipite Chapter of the California Sierra Club stated that they have not had any previous interactions with NPS regarding cleanup sites within the Park.

Specific concerns or comments from the various organizations are included below:

#### **3.3.2.1 The Central Sierra Environmental Resource Center**

The Central Sierra Environmental Resource Center expressed concern regarding the potential exposure to humans and due to the location of the Site relative to Vogelsang HSC and stated that they hoped cleanup of the Site would achieve either full containment or removal of all contaminated media. They were adamant that any potential cleanup of the Site appear as natural as possible. The Central Sierra Environmental Resource Center also expressed interest in receiving additional information regarding analytical results, how the consideration of action alternatives is developed, what costs are projected to be for the range of feasible alternatives for the Site, and what rationale the Park decision-maker uses for the final choice of a selected action.



#### 3.3.2.2 The Sierra Club California Conservation Committee

The Sierra Club California Conservation Committee stated that that cleanup of the Site should return the Site to its natural pristine state, as expected in National Park. They also expressed concerns regarding any potential impacts that cleanup activities may have on the surrounding wilderness and the Vogelsang HSC.

#### 3.3.2.3 The Tehipite Chapter of the California Sierra Club

The Tehipite Chapter of the California Sierra Club stated that any potential cleanup should remove contaminated materials with minimal impact to surrounding area and trails. They were also concerned that degradation of the natural state in the area of the Site may be exacerbated by the removal of contaminated soils. They noted that their group needed information about what methods would be used to remediate the contamination at the Site.

#### 3.3.2.4 The Merced Group of the Tehipite Chapter of the California Sierra Club

The Merced Group of the Tehipite Chapter of the California Sierra Club was very concerned with the contaminants present at the Site and the potential exposure to humans and wildlife in the area. The group stated that any cleanup of the Site should achieve safety for staff and visitors in the vicinity and the removal of contaminants that could impact the health of humans and wildlife. They also noted the challenge posed by conducting a cleanup in a remote wilderness area and the potential disruptions to trails that any contractors or workers may create. The Merced Group of the Tehipite Chapter of the California Sierra Club stated that they would like access to details on the previous studies conducted at the Site, insight into the standards that cleanup activities will be conducted under, as well as the proposed techniques for cleanup. The group stated that they wanted to be involved in planning and notified of any future decisions at the Site.

### **3.3.3 Community Preferences for Receiving Site Information**

All of the interviewees expressed interest in being involved in future community involvement activities associated with the Site. Interviewees

Most interviewees expressed an interest in receiving email updates regarding developments at the Site. The Sierra Club California Conservation Committee expressed an interest in an NPS website where documents and other information regarding the Site would be made available. Most interviewees indicated that they would like to receive updates regarding the Site when something significant was planned, and/or when public comment was being requested on Site issues. The interviewees suggested a wide variety of print media publications for dissemination of Site information, including the *Merced County Times* (one vote), the *Sonora Union Democrat* (one vote), and the *Fresno Bee* (one vote). NPS Public and Legislative Affairs staff at Yosemite indicated that the *Mariposa Gazette and Miner* will be the newspaper of record for this project.



All interviewees expressed interest in attending community meetings regarding the Site. Most interviewees acknowledged that community meetings held in the near future would be held virtually due to the ongoing COVID-19 pandemic. Should in-person meetings become a safe option in the future, interviewees suggested a variety of meeting locations (including Groveland, Merced, Mariposa, or Fresno, California), but the location shared among most interviewees was at the Park itself. No preferences were expressed for meeting dates or times.



## 4.0 PLANNED COMMUNITY INVOLVEMENT ACTIVITIES

As noted earlier, the key objectives of the community involvement program are to establish and encourage communication between NPS and the community and provide opportunities for the public to provide input throughout the course of CERCLA response activities at the Site. The following methods and techniques, which are selected based in part on community interview responses, will be used to promote public participation and establish steps to provide timely information to interested citizens, agency staff, government officials, the media, and the community at large. The first part of this section describes each community involvement activity and the second part provides a schedule for when those activities will occur.

*Important: Upon request, NPS will endeavor to meet identified needs for translation, access to electronic communications, disability access, or other accommodations for people with special needs.*

### 4.1 Communication Methods and Community Involvement Activities

- **Site Spokesperson**

Mr. Scott Gediman, Chief of Public & Legislative Affairs, Yosemite National Park, is the designated NPS spokesperson who will inform the community of actions taken, respond to inquiries, provide information concerning the Site, and act as liaison between the NPS and community members, environmental groups, government officials, the media, and other interested parties. See Appendix E for contact information.

- **Administrative Record File and Information Repository**

The administrative record file is housed in both information repositories and contains Site environmental investigations and reports and other information that NPS considers or relies upon in the response action selection process. NPS will update the administrative record file at key points during the response action process, such as when important investigations and reports are completed. See Appendix B for administrative record file and information repository details.

- **Interested Parties Mailing List**

NPS maintains an interested-parties mailing list that includes federal, state, and local elected officials; local school district officials; selected agency staff; community groups; media contacts; and interested community members. This list includes parties listed in Appendix E. NPS notifies the parties on the list whenever key documents are published or the status of the Site changes. In accordance with NPS's sustainability efforts, whenever possible mailings will be sent electronically by email, with hyperlinks to documents posted on the website. However, interested parties can request conventional mail delivery if access to electronic communication is not available. In such cases, the NPS will send a letter informing interested parties of the availability of documents at the information repositories.



Efforts are ongoing to expand the mailing list. Individuals can be added to the mailing list by contacting the Site spokesperson (See Appendix E for contact information). NPS also offers sign-up opportunities at public meetings. The NPS updates the mailing list as appropriate to reflect changes in government representatives and other contacts. Note that contact information for private individuals on the list will be kept confidential to protect the personal information of those individuals.

- **Public Comment Periods**

While NPS accepts comments on ongoing response activities from the public at any time, there will be a 30-day public comment period when the Draft Final EE/CA Report is issued, which will propose specific actions or decisions concerning cleanup of the Site. A public comment period is a formal time period during which the NPS accepts comments from the public on specific proposed actions or decisions. Generally, public comment periods last for 30 days, although they may be longer. Upon timely request (preferably to the Site spokesperson and in writing) during any public comment period, the NPS will extend the public comment period by a minimum of 15 days. In addition, upon request, the NPS will meet identified needs for translation, access to electronic communications, or other accommodations for persons with special needs. (See Public Notices, below).

The NPS will formally notify the community of public comment periods through several means:

- The NPS will publish notice of public comment periods in *Mariposa Gazette* and the *Sonora Union Democrat*.
- The NPS will place notice of public comment periods on the Site website.
- The NPS will notify individuals listed on the Interested Parties Mailing List.

The public comment period for the Draft Final EE/CA Report for the Site is anticipated to take place in the summer of 2021.

Following the close of a formal public comment period, the NPS will prepare written responses to significant public comments *received during the public comment period* (called a “responsiveness summary”); the responsiveness summary will be added to the administrative record file.

- **Public Notices**

The NPS will issue public notices to inform the community and the general public of public events, publication of key documents, and major Site milestones.

Based on identified community preferences and the subject of the announcement, NPS will select from the following methods to distribute public notices about the Site:

- News release.
- Mariposa Gazette To reach as many people as possible, the NPS publishes public notices in main sections of newspapers, not in legal notices sections.
- Site website.





- Notice sent to the Interested Parties Mailing List.
- Park postings as described in Park Visitor Communication.

Upcoming public notices will include the EE/CA Draft Final Report public comment period (summer, 2021). The notice will provide a brief description of the EE/CA report; announce its availability for review; list dates of the 30-day public comment period; identify a contact person; list the locations where the document can be reviewed; and identify where written comments should be sent.

- **Public Meetings**

Public meetings are scheduled to communicate directly with the public about key Site milestones. Public meetings are usually fairly structured forums that are open to the general public, including both affected and unaffected parties. Public meetings typically include an NPS staff presentation followed by a question, answer, and comment session. Based on identified community preferences, public meetings will be held at a location within Yosemite National Park or in the nearby communities of El Portal or Groveland. Any public meetings that are scheduled will be announced as described in the Public Notices section above.

Public meetings held during the formal public comment period will be recorded and transcribed, and the transcript will be made available in the administrative record file. As noted above in the Public Comment Period section, NPS responses to significant oral or written comments made during a public meeting (“responsiveness summary”) will be compiled and placed in the administrative record file.

In addition to the structured public meetings, as appropriate NPS may hold public briefings prior to field work to inform the public of the nature, scheduling, and likely impacts of the upcoming activities, as well as to receive any suggestions on alleviating such impacts.

To date, no requests have been made to provide a translator; however, NPS will take steps to accommodate such requests as well as those for individuals with special needs, as appropriate. Community interviews identified Spanish and Hmong as other languages that may be spoken in the communities near the Site, however, demographic data for these communities indicate that English is widely spoken and understood.

- **Newspaper Contacts/News Releases**

During the CIP interviews, interviewees identified the *Sonora Union Democrat* and *Mariposa Gazette* as their preferred option for receiving newspaper notices. Interviewees stated that this newspaper is widely read and residents generally trust its contents. Because of this, efforts will be made to maintain regular contact with the appropriate



reporter to ensure that factual and consistent project information is available to the newspaper when needed.

Other newspapers identified in the community interviews were the *Merced County Times*, the *Sonora Union Democrat*, and the *Fresno Bee*. Generally, all media outlets regularly contacted by Park staff will be included when news releases are issued. News releases will also be posted on the Park's web page.

News releases will be issued at key milestones to ensure the distribution of accurate and timely information.

- **Community Organization Presentations**

If requested, the NPS will meet with interested community organizations or provide information for community organizations to include in their newsletters. Interested community organizations can discuss community organization presentations by calling or emailing the Site spokesperson at the contact information provided in Appendix E, Contact Information.

- **Park Visitor Communication**

Based on discussions held during the community interviews, the NPS has determined that the most effective ways to provide Site information to Park visitors will be to use the following methods:

- Posted notices located at the Tuolumne Meadows Wilderness Center and at the various trailheads along Tuolumne Meadows Lodge Road which access the Rafferty Creek and Evelyn Lake trails to Vogelsang HSC.
- Posted notices at Park Visitor Centers
- Brief article in the *Yosemite Guide*, the newspaper that is distributed to visitors as they enter the Park
- Park website
- Informed Park staff (with sufficient information to address visitor questions)
- Community Updates

Posted items will briefly explain the purpose of the project, what visitors may see or hear in the area, safety concerns, and sources for additional information. The NPS will also post the following information:

- The Site website address
- Site spokesperson and contact information
- Public notices
- Notices of public meetings
- Site access restrictions

- **Community Updates**

Community Updates are brief documents to inform the community about the Site and the environmental investigation and cleanup process. Community Updates present



information about Site history; the nature and extent of Site contamination; public health and safety issues; investigation and/or cleanup plans, processes, and schedules; and local impacts during cleanup activities. Community Updates also provide contact information for public inquiries.

The NPS will prepare Community Updates upon completion of the Draft Final EE/CA Report, and at other key milestones in the cleanup process. NO updates have been prepared to date.

As noted in the Public Meetings section above, there have been no requests for translation services for community updates to date, and demographic data suggest that English is widely spoken at the Site. However, the NPS shall make accommodations provide translation services or other accommodations that allow interested parties to access Site information, should they be requested.

NPS will distribute Community Updates to the public using the following means:

- Posting Community Updates on the Site website
  - Sending a notice to persons on the Interested Parties Mailing List with either a hyperlink to (for email notices) or a copy (for regular mail notices) of the Community Update
  - Posting Community Updates at or near the Site as described in the Park Visitor Communication section above
  - Making Community Updates available at various Park locations
- **Site Website**  
NPS will post general Site information as well as key cleanup and community involvement documents on a page dedicated to the Site on the Park website ([www.nps.gov/yose](http://www.nps.gov/yose)).
- **Contact Information**  
NPS contact information will be included in Community Updates, public notices, news releases, and on the Site website. Contact information for NPS representatives as well as for other key individuals is provided in Appendix E, Contact Information.
- **Community Involvement Plan Revision**  
To remain flexible and able to respond to the evolving needs of the community and changes to the Site, the CIP will be reviewed and revised as needed, and posted on the website. As the response action progresses, NPS staff may identify and use additional means or activities to inform and engage the community.

## 4.2 Community Involvement Activity Schedule

- The NPS selected the above methods and activities to engage and inform the community regarding the Site and Site activities. This section provides a schedule for when those activities will occur.



Upon completion of the Draft Final EE/CA Report (projected to occur in the summer of 2021), the report will be posted on the NPS website and a public comment period on the findings of the EE/CA report will be conducted. A public meeting may be held during the comment period. A Community Update regarding this report and the public comment period will be prepared and disseminated. The Draft Final EE/CA Report, the public comment period, and any scheduled public meetings will be announced by Public Notice.

- **Ongoing Activities**

- Respond to citizen inquiries and requests
- Maintain the administrative record file and information repositories
- Maintain the Interested Parties Mailing List
- Maintain park visitor communications
- Maintain the Site website



## 5.0 REFERENCES

Aramark. 2021. *High Sierra Camps*. Available at <https://www.travelyosemite.com/lodging/high-sierra-camps/#vogelsang>. Accessed January 18, 2021.

CDM Smith. 2019. *NPS Site Inspection Report, Vogelsang Former Waste Disposal Area, Yosemite National Park, California*, prepared by CDM Smith, February 15, 2009.

IT Corporation. 2002. *Focused Site Inspection, Vogelsang Waste Accumulation Area, Yosemite National Park, California*. September 2002.

National Park Service (NPS). 2014. *Community Involvement Requirements and Best Practices*. 2014. Available at <https://connect.doi.gov/nps/csportal>.

NPS. 2009. *Yosemite National Park Visitor Study*. Summer 2009. Available at: <https://www.nps.gov/yose/learn/nature/upload/Visitor-Use-Summer-2009-Study.pdf>. Accessed January 18, 2021.

NPS. 2014. *Community Involvement Requirements and Best Practices*. 2014. Available at <https://connect.doi.gov/nps/csportal>.

NPS. 2021. *Visitor Use Stats, Yosemite National Park*. Available at <https://irma.nps.gov/STATS/Reports/Park/YOSE>. Accessed January 18, 2021.

United States Department of the Interior (USDOI). Environmental Compliance Memorandum No. ECM 14-2: *Central Hazardous Materials Fund (CHF) Comprehensive Environmental Response, Compensation, and Liability Act (CERCLA) Process for CHF Projects*. May 2014. Available at <http://www.doi.gov/pmb/oepc/upload/ECM-14-2-CERCLA-Process-for-CHF-Projects.pdf>.

United States Environmental Protection Agency (USEPA). *Superfund Community Involvement Handbook*. Apr. 2005. Available at [http://www.epa.gov/superfund/community/cag/pdfs/ci\\_handbook.pdf](http://www.epa.gov/superfund/community/cag/pdfs/ci_handbook.pdf).

USEPA. *Community Involvement Toolkit*. Available at <http://www.epa.gov/superfund/community/toolkit.htm>.







## APPENDIX A: GLOSSARY

**Definitions for CERCLA-related words found throughout the CIP are provided below.**

**Administrative Record File:** A file that contains all information considered or relied upon by the lead agency to make its decision on the selection of a response action under CERCLA. See Appendix B, Administrative Record File and Information Repository Details, for further information on the Site administrative record file.

**CERCLA (Comprehensive Environmental Response, Compensation, and Liability Act):** A federal law, commonly known as “Superfund,” which Congress enacted in 1980 and amended in 1986 and 2002. The law provides broad federal authority to respond directly to releases or threatened releases of hazardous substances that may endanger public health or welfare or the environment; establishes the categories of persons who are liable for such releases; and outlines a framework for investigating and responding to releases and threatened releases of hazardous substances where the lead agency determines it is necessary. CERCLA generally authorizes three types of cleanup actions: emergency response actions, removal actions, and remedial actions.

**Cleanup:** Used in this document to describe actions taken to address a release or threat of a release of hazardous substances, pursuant to CERCLA, that could affect public health or welfare or the environment. The word “cleanup” is sometimes used interchangeably with the terms remedial action, removal action, response action, remedy, remediation, or corrective action.

**Community Interview:** Interviews conducted by the lead agency as part of the process of preparing a Community Involvement Plan. For most response actions, the NCP requires the lead agency to conduct community interviews to determine appropriate activities to ensure public involvement in Site-related decisions.

**Community Involvement Plan (CIP):** A plan that explains how NPS intends to enable meaningful community involvement throughout the cleanup process by specifying planned community involvement activities to address community needs, concerns, and expectations identified through community interviews and other means.

**Consent Decree:** A legally-binding, court-approved negotiated settlement in which a person or company agrees to take specific actions, to end or avoid litigation.

**Feasibility Study:** A CERCLA term for the development and detailed analysis of cleanup alternatives for a contaminated site that will be addressed by a remedial action. The feasibility study follows the remedial investigation.

**Hazardous Substance:** Any one of the more than 800 substances defined under CERCLA and the NCP as potentially posing a threat to human health or the environment. Hazardous substances include materials defined as ignitable, corrosive, reactive, or toxic under the Resource Conservation and Recovery Act (RCRA), as well as additional substances listed under the Clean Water Act and hazardous air pollutants listed under the Clean Air Act.



**Information Repository:** A location open to members of the general public where a collection of documents (including the administrative record file) relevant to a particular CERCLA Site is made available for public review and copying. See Appendix B, Administrative Record File and Information Repository Details, for the locations and addresses of the Vogelsang Former Waste Disposal Area Site information repositories.

**Lead Agency:** The government agency with the primary authority to investigate, plan and implement a response action under CERCLA and the NCP at a particular site.

**National Oil and Hazardous Substances Pollution Contingency Plan (NCP):** More commonly called the National Contingency Plan or NCP, it is the federal government's regulatory blueprint for responding to both oil spills and releases and threatened releases of hazardous substances. The NCP is the result of our country's efforts to develop a national response capability and promote overall coordination among the hierarchy of responders and contingency plans. The regulations, published at 40 C.F.R. Part 300, detail how CERCLA is to be implemented.

**Non-Time-Critical Removal Action:** A removal action conducted when the lead agency determines that there is a planning period of at least six months before on-site activities must be initiated.

**Notice of Availability:** A formal notice announcing the issuance and public availability of a document (e.g., proposed plan) or documents (e.g., the administrative record file or updates thereto). A Notice of Availability is also issued when the information repositories are established. The notice may also announce commencement of a public comment period.

**Proposed Plan:** A document summarizing the cleanup alternatives analyzed in the feasibility study that also describes the lead agency's preferred alternative. This document is made available for public review and comment.

**Public Comment Period:** A period during which the public can formally review and comment on various documents and proposed response actions.

**Record of Decision:** The official decision document determining the remediation goals and remedial action selected for cleanup. The Record of Decision is the culmination of the remedial investigation, feasibility study, and proposed plan processes. The document includes a comprehensive background about the site and prior response activities, as well as the responsiveness summary, which provides the lead agency's responses to the significant comments received during the public comment period on the proposed plan.

**Remedial Action (RA):** A term used to refer to longer-term cleanup actions to address the release or threatened release of hazardous substances typically at larger, more complex CERCLA sites. Under CERCLA, the term refers to the entire process of the remedial investigation, feasibility study, proposed plan, Record of Decision, cleanup, monitoring, and even enforcement; but sometimes it is used to describe just the cleanup phase of the longer-term cleanup action.



**Remedial Design:** Remedial design follows issuance of the Record of Decision and consists of the engineered, technical, and detailed design for the cleanup action phase of a remedial action.

**Remedial Investigation:** The comprehensive study of a contaminated site conducted as part of a remedial action. This investigation includes the collection of data and other information necessary to fully characterize the nature and extent of contamination at the site, and to assess the extent to which the site contamination presents potential risks to human health or welfare or the environment. When the investigation is completed, it is documented in a remedial investigation report. The remedial investigation informs the feasibility study.

**Removal Action:** A type of CERCLA response action with a streamlined planning process. A removal action is conducted to address all or a part of a release or threatened release of hazardous substances when the release requires an expedited, time-critical response, or when the release is of limited size and complexity such that streamlined response planning is appropriate. There are two types of removal actions – time-critical and non-time-critical; sometimes emergency response actions (undertaken by the U.S. Environmental Protection Agency) are referred to as removal actions. The term refers both to the entire removal response action, as well as just the cleanup phase of such an action.

**Response Action:** The most general CERCLA term used to describe any action taken to respond to a release or threatened release of hazardous substances to protect the public health or welfare or the environment. The term includes all phases of the response, from investigation through monitoring and even enforcement activities. There are generally three types of CERCLA response actions that may be undertaken by NPS as the lead agency: time-critical removal actions, non-time-critical removal actions, and remedial actions. The response action at the Vogelsang Former Waste Disposal Area Site is a non-time-critical removal action.

**Responsiveness Summary:** Document summarizing the significant comments received during a public comment period and documenting the lead agency's responses to the comments.

**Site:** The Vogelsang Former Waste Disposal Area Site, which comprises the area contaminated or potentially contaminated by a release or threatened release of hazardous substances.

**Time-Critical Removal Action:** A removal action conducted when the lead agency determines that there is not a planning period of at least six months before on-site activities must be initiated.



## APPENDIX B: ADMINISTRATIVE RECORD FILE AND INFORMATION REPOSITORY DETAILS

The Site administrative record file is maintained at the information repository in El Portal, which may be reviewed at the following information repositories during the hours indicated:

Location	
Location Name:	Project Management Division
Address:	5083 Foresta Rd, El Portal, CA 95318
Days and Hours:	M-F, 8:00 AM to 4:00 PM
For file review appointments, contact:	
Name:	Greg Stock, PhD, PG
Title:	Park Geologist
Organization:	Yosemite National Park
Phone:	(209) 379-1420
Email:	<a href="mailto:greg_stock@nps.gov">greg_stock@nps.gov</a>
Days and Hours:	M-Th, 8:00 AM to 4:00 PM





## APPENDIX C: COMMUNITY FACT SHEETS AND COMMUNITY UPDATES

**No fact sheets or community updates have been prepared for this Site to date.**



## **APPENDIX D: COMMUNITY INTERVIEW QUESTIONNAIRE**

### **Introductory Questions**

1. Were you aware of the environmental issues at these Sites prior to receiving the information provided with this questionnaire? If so, when did you first become aware?
2. On a scale from 1 (lowest interest) to 10 (highest interest), please rate your level of interest in each Site. Why is each Site important (or not important) to you?
3. What is your understanding of the previous investigation activities and environmental issues at these Sites?
4. Do you feel that you, members of your organization, or your community, have been affected by environmental issues or activities at these Sites? If so, please describe how you have been affected.
5. On a scale from 1 (lowest concern) to 10 (highest concern), please rate your level of concern regarding each Site. What are you most concerned about regarding these Sites right now?

### **Cleanup-Related Questions**

6. What are your concerns about the potential cleanup activities at the Sites going forward?
7. What do you hope that potential cleanup activities at these Sites will achieve?

### **Community Characteristics Questions**

8. What organizations or individuals do you consider to be the most credible on environmental issues in your community?
9. Who do you consider to be the leaders in the community that may be concerned with the cleanup of each Site? What are your current concerns about the Site?
10. Is English widely understood in the groups or communities that may be concerned with cleanup of each Site? What other languages will need to be used to communicate with these communities?

### **Community Involvement Questions**

11. Have you or your organization participated in community involvement activities regarding these Sites in the past? If so, what kind of activities?
12. Would you and your organization like to be involved in future community involvement activities regarding these Sites?



13. Have you been engaged with NPS regarding these Sites or similar Park cleanup sites in the past? If so, how effective has communication from NPS been?
14. Do you feel you have been kept adequately informed about these Sites or other similar Park cleanup Sites? If not, what can be done to change this??
15. What kind of information about each Site do you want or need?
16. Where would you look to find information regarding these Sites?
17. Whom would you contact with questions about these Sites?
18. How can we best provide you and your organization with information about the cleanup of each Site? Potential methods that NPS can use to provide information include: mailing lists or email lists, NPS website postings, news media releases, public notices, and community meetings. Which of these would be most effective? Are there other ways that you would like to receive information about each Site? If so, what are they?
19. Would you attend community meetings regarding cleanup activities at these Sites? If so, do you or your organization have a preference for community meeting locations and times?
20. How often do you want to get information about what is going on at these Sites? (Weekly? Monthly? Quarterly? Only when something significant happens?)
21. What local newspapers and other local news media sources would best provide you and other individuals in the community with information about these Sites?
22. Do you think that there are individuals or groups in the community who would not be reached or have their concerns addressed by using the methods of communication that are discussed in the questions above? If so, please identify these individuals/groups, and suggest ways that we might communicate with them.
23. What other individuals or groups should we contact to discuss how best to involve the community in the cleanup process for these Sites?

### **Questions Regarding Perception of the Cleanup Process**

24. What is your opinion of the government's commitment to cleaning up contamination at these Sites or other similar Park cleanup sites?
25. Have you had any interactions with NPS, the state, or any other government agencies or officials regarding the cleanup of these Sites or other similar park cleanup sites? If so, what government groups did you interact with, and how would you describe your experiences?



## APPENDIX E: CONTACT INFORMATION

The NPS will update contact information as necessary.

### Site-Specific Contacts

For information about Site cleanup activities, please contact:

	Site Spokesperson	Park Contact
<b>Name:</b>	Scott Gediman	Greg Stock, PhD, P.G.
<b>Title:</b>	Chief of Public and Legislative Affairs	Park Geologist
<b>Organization:</b>	National Park Service, Yosemite National Park	National Park Service, Yosemite National Park
<b>Address:</b>	PO Box 577 Yosemite National Park, CA 95389	PO Box 700 El Portal, CA 95318
<b>Phone:</b>	(209) 372-0248	(209) 379-1420
<b>Email:</b>	<a href="mailto:scott_gediman@nps.gov">scott_gediman@nps.gov</a>	<a href="mailto:greg_stock@nps.gov">greg_stock@nps.gov</a>

	NPS Region Contact	NPS Headquarters Contact
<b>Name:</b>	Stephen Mitchell, P.E.	Greg Nottingham
<b>Title:</b>	Chief, Operations/Environmental Programs Branch	Contaminated Sites Program Manager
<b>Organization:</b>	National Park Service, Environmental Compliance and Cleanup Division	National Park Service, WASO/PFMD/Environmental Compliance and Cleanup Division
<b>Address:</b>	333 Bush Street, Suite 500, San Francisco, CA 94104	66 S. Van Gordon Street Lakewood, CO 80228
<b>Phone:</b>	(415) 623-2286	(303) 415-1483
<b>Email:</b>	<a href="mailto:steve_mitchell@nps.gov">steve_mitchell@nps.gov</a>	<a href="mailto:greg_nottingham@nps.gov">greg_nottingham@nps.gov</a>



## Elected Official Contacts

### Federal Elected Officials

	Senator	Senator
<b>Name:</b>	Senator Dianne Feinstein	Senator Alex Padilla
<b>Title:</b>	U.S. Senator	U.S. Senator
<b>Address:</b>	2500 Tulare Street, Suite 4290 Fresno, CA 93721	B03 Russell Senate Office Building Washington, DC 20510
<b>Phone:</b>	(559) 485-7430	(202) 224-3553
<b>Email or Webform:</b>	<a href="https://www.feinstein.senate.gov/public/index.cfm/e-mail-me">https://www.feinstein.senate.gov/public/index.cfm/e-mail-me</a>	<a href="https://www.senate.gov/senators/117th/Congress/padilla-alex.htm">https://www.senate.gov/senators/117th/Congress/padilla-alex.htm</a>

	House Representative
<b>Name:</b>	Representative Tom McClintock
<b>Title:</b>	California District 4 U.S. Representative
<b>Address:</b>	2200A Douglas Blvd, Suite 240 Roseville, CA 95661
<b>Phone:</b>	(916) 786-5560
<b>Email or Webform:</b>	<a href="https://mcclintock.house.gov/contact/email-me">https://mcclintock.house.gov/contact/email-me</a>

### California Elected Officials

	Governor	State Senator
<b>Name:</b>	Governor Gavin Newsom	Senator Andrea Borgeas
<b>Title:</b>	California Governor	California State Senator
<b>Address:</b>	1303 10th Street, Suite 1173 Sacramento, CA 95814	567 W. Shaw Avenue, Suite A-3 Fresno, CA 93704
<b>Phone:</b>	(916) 445-2841	(559) 243-8580
<b>Email or Webform:</b>	<a href="https://govapps.gov.ca.gov/gov40mail/">https://govapps.gov.ca.gov/gov40mail/</a>	<a href="https://borgeas.cssrc.us/e-mail-senator">https://borgeas.cssrc.us/e-mail-senator</a>

	State Assembly Representative
<b>Name:</b>	Frank Bigelow
<b>Title:</b>	Assembly Member, District 5 Representative
<b>Address:</b>	730 North I Street Suite #102 Madera, CA 93637
<b>Phone:</b>	(559) 673-0501
<b>Email or Webform:</b>	<a href="https://lcmspubcontact.lc.ca.gov/PublicLCMS/ContactPopup.php?district=AD05&amp;iframe=Y">https://lcmspubcontact.lc.ca.gov/PublicLCMS/ContactPopup.php?district=AD05&amp;iframe=Y</a>



### Mariposa County Elected Officials

	County Supervisor
<b>Name:</b>	Rosemarie Smallcombe
<b>Title:</b>	Supervisor – District 1
<b>Address:</b>	P.O Box 784 Mariposa, CA 9538
<b>Phone:</b>	(209) 966-3222
<b>Email or Webform:</b>	<a href="mailto:rsmallcombe@mariposacounty.org">rsmallcombe@mariposacounty.org</a>

### Federal Agencies

	EPA Region 9	U.S. Fish and Wildlife Service
<b>Name:</b>	John Lyons	
<b>Title:</b>	Chief, California Site Cleanup Branch, Superfund and Emergency Management Division	Division of Natural Resources, Pacific Southwest Region
<b>Organization:</b>	EPA Region 9	U.S. Fish and Wildlife Service
<b>Address:</b>	75 Hawthorne Street Mail Code: SFD-1 San Francisco, CA 94105	2800 Cottage Way Rm W-2605 Sacramento, CA
<b>Phone:</b>	(415) 972-3889	(916) 414-6464
<b>Email:</b>	<a href="mailto:lyons.john@epa.gov">lyons.john@epa.gov</a>	<a href="https://www.fws.gov/duspit/contactus.htm">https://www.fws.gov/duspit/contactus.htm</a>

### California Agencies

	California Department of Toxic Substances Control	California Department of Transportation
<b>Name:</b>	Carolyn Tatoian-Cain	
<b>Title:</b>	Senior Environmental Scientist	District 10 - Stockton
<b>Organization:</b>	Cleanup Program, California Department of Toxic Substances Control	California Department of Transportation
<b>Address:</b>	8800 Cal Center Drive Sacramento, CA 95826-3200	1976 East Dr. Martin Luther King Jr. Blvd. Stockton, CA 95205
<b>Phone:</b>	(916) 255-3771	(209) 948-7543
<b>Email:</b>	<a href="mailto:carolyn.tatoian-cain@dtsc.ca.gov">carolyn.tatoian-cain@dtsc.ca.gov</a>	<a href="mailto:district10publicaffairs@dot.ca.gov">district10publicaffairs@dot.ca.gov</a>





	California Department of Fish and Wildlife	California Office of Historic Preservation
<b>Name:</b>	Elizabeth Vos-Widtfeldt	Julianne Polanco
<b>Title:</b>	Office of Spill Prevention and Response	State Historic Preservation Officer
<b>Organization:</b>	California Department of Fish and Wildlife	California State Parks, Office of Historic Preservation
<b>Address:</b>	P.O. Box 944209 Sacramento, CA 94244-2090	1725 23rd Street, Suite 100 Sacramento, CA 95816
<b>Phone:</b>	(916) 375-8581	(916) 445-7000
<b>Email:</b>	<a href="mailto:Elizabeth.Vos-Widtfeldt@wildlife.ca.gov">Elizabeth.Vos-Widtfeldt@wildlife.ca.gov</a>	<a href="mailto:julianne.polanco@parks.ca.gov">julianne.polanco@parks.ca.gov</a>

### Indian Nations or Tribes

	Tuolumne Band of Me-Wuk Indians	Bridgeport Indian Colony
<b>Name:</b>	Ms. Reba Fuller	Mr. Herbert Glazier
<b>Title:</b>	Governmental Affairs	Chair
<b>Organization:</b>	Tuolumne Band of Me-Wuk Indians	Bridgeport Indian Colony
<b>Address:</b>	P.O. Box 699 Tuolumne, California 95379	P.O. Box 37 Bridgeport, California 93517
<b>Phone:</b>	209-928-5300	
<b>Email:</b>	<a href="mailto:rfuller@mewuk.com">rfuller@mewuk.com</a>	<a href="mailto:chair@bridgeportindiancolony.com">chair@bridgeportindiancolony.com</a>

	Mono Lake Kutzadika <sup>a</sup> Tribe	American Indian Council of Mariposa County, Inc. aka Southern Sierra Miwuk Nation
<b>Name:</b>	Ms. Charlotte Lange	Mr. Gary Harlow
<b>Title:</b>	Chair	Acting Chairperson
<b>Organization:</b>	Mono Lake Kutzadika <sup>a</sup> Tribe	American Indian Council of Mariposa County, Inc., aka Southern Sierra Miwuk Nation
<b>Address:</b>	P.O. Box 117 Big Pine, California 93513	P.O. Box 186 Mariposa, California 95338
<b>Phone:</b>		559-642-8252
<b>Email:</b>	<a href="mailto:char54lange@gmail.com">char54lange@gmail.com</a>	<a href="mailto:southernsierramiwuknation@gmail.com">southernsierramiwuknation@gmail.com</a>



	Picayune Rancheria of the Chukchansi Indians	Bishop Paiute Tribe
<b>Name:</b>	Ms. Claudia Gonzales	Mr. Tilford P. Denver
<b>Title:</b>	Chair	Tribal Chairman
<b>Organization:</b>	Picayune Rancheria of the Chukchansi Indians	Bishop Paiute Tribe
<b>Address:</b>	Attention: Sharol Mcdade P.O. Box 2226 Oakhurst, California 93644	Attention: Monty Bengochia, THPO 50 Tusu Lane Bishop, California 93514
<b>Phone:</b>		
<b>Email:</b>	<a href="mailto:cgonzales@chukchansi-nsn.gov">cgonzales@chukchansi-nsn.gov</a>	<a href="mailto:monty.bengochia@bishoppaiute.org">monty.bengochia@bishoppaiute.org</a>

	North Fork Rancheria of Mono Indians of California
<b>Name:</b>	Ms. Elaine Bethel-Fink
<b>Title:</b>	Chairperson
<b>Organization:</b>	North Fork Rancheria of Mono Indians of California
<b>Address:</b>	P.O. Box 929 North Fork, California 93643
<b>Phone:</b>	
<b>Email:</b>	<a href="mailto:efink@nfr.nsn.gov">efink@nfr.nsn.gov</a>

#### Local School District and Schools

	El Portal School	Mariposa County Unified School District
<b>Name:</b>	James Freeman	Jeff Aranguena
<b>Title:</b>	Principal	Superintendent
<b>Organization:</b>	El Portal School	Mariposa County Unified School District
<b>Address:</b>	P.O. Box 190 El Portal, CA 95318	P.O. Box 8 Mariposa, CA 95338
<b>Phone:</b>	209-379-2382	209-742-0250
<b>Email:</b>		<a href="mailto:jaranguena@mcusd.org">jaranguena@mcusd.org</a>



	<b>Tenaya Elementary School</b>	<b>Tioga High School</b>
<b>Name:</b>	Wynette Hilton	Andrea Fray
<b>Title:</b>	Principal	Principal
<b>Organization:</b>	Tenaya Elementary School	Tioga High School
<b>Address:</b>	19177 State Highway 120 Groveland, CA 95321	19304 Ferretti Road Groveland, CA 95321
<b>Phone:</b>	209-962-7846	209-962-4763
<b>Email:</b>	<a href="mailto:whilton@bofg.org">whilton@bofg.org</a>	<a href="mailto:afay@bofg.org">afay@bofg.org</a>

	<b>Big Oak Flat-Groveland Unified School District</b>
<b>Name:</b>	Wynette Hilton
<b>Title:</b>	Superintendent
<b>Organization:</b>	Big Oak Flat-Groveland Unified School District
<b>Address:</b>	19177 State Highway 120 Groveland, CA 95321
<b>Phone:</b>	209-962-7846
<b>Email:</b>	<a href="mailto:whilton@bofg.org">whilton@bofg.org</a>

### Community Organizations and Environmental Groups

	<b>Sierra Club, Yosemite Committee</b>	<b>Sierra Club, Merced Group of the Tehipite Chapter</b>
<b>Name:</b>	Alan Carlton	Rod Webster
<b>Title:</b>	Chair	Chair
<b>Organization:</b>	Yosemite Committee, California Conservation Committee, Sierra Club	Merced Group, Tehipite Chapter, Sierra Club
<b>Address:</b>		345 E. 20th St. Merced, California 95340
<b>Phone:</b>		209-723-4747
<b>Email:</b>	<a href="mailto:carltonal@yahoo.com">carltonal@yahoo.com</a>	<a href="mailto:rwebster@elite.net">rwebster@elite.net</a>



	Central Sierra Environmental Resource Center	Tuolumne River Trust
<b>Name:</b>	John Buckley	Patrick Koepele
<b>Title:</b>	Executive Director	Executive Director
<b>Organization:</b>	Central Sierra Environmental Resource Center	Tuolumne River Trust
<b>Address:</b>	PO Box 396, Twain Harte, CA 95383	67 Linoberg Street Sonora, CA 95370
<b>Phone:</b>	(209) 586-7440	209-588-8636
<b>Email:</b>	<a href="mailto:info@cserc.org">info@cserc.org</a>	<a href="mailto:staff@tuolumne.org">staff@tuolumne.org</a>

### Yosemite National Park Partners

	Aramark/Yosemite Hospitality, LLC	Yosemite Conservancy
<b>Name:</b>		
<b>Title:</b>		
<b>Organization:</b>	Yosemite Hospitality, LLC <a href="http://www.travelyosemite.com">www.travelyosemite.com</a>	Yosemite Conservancy <a href="http://www.yosemite.org">www.yosemite.org</a>
<b>Address:</b>	PO Box 306 Yosemite, CA 95389	P.O. Box 230 El Portal, CA 95318
<b>Phone:</b>	(888) 304-8993	209-379-2317
<b>Email:</b>	<a href="http://www.travelyosemite.com/contact-us/">www.travelyosemite.com/contact-us/</a>	<a href="mailto:info@yosemite.org">info@yosemite.org</a>

	NatureBridge	The Ansel Adams Gallery
<b>Name:</b>		
<b>Title:</b>		
<b>Organization:</b>	NatureBridge at Yosemite <a href="http://www.naturebridge.org/locations/yosemite">www.naturebridge.org/locations/yosemite</a>	The Ansel Adams Gallery <a href="http://www.anseladams.com">www.anseladams.com</a>
<b>Address:</b>	P.O. Box 487 Yosemite National Park, CA 95389	PO Box 455 Yosemite, CA 95389
<b>Phone:</b>	209-379-9511	(209) 372-4413
<b>Email:</b>	<a href="mailto:yosemite@naturebridge.org">yosemite@naturebridge.org</a>	<a href="mailto:info@anseladams.com">info@anseladams.com</a>



## Media

### Online News

	MyMotherLode.com	Sierra News Online
<b>Title:</b>	myMotherLode.com	SierraNewsOnline.com
<b>Link:</b>	<a href="http://www.mymotherlode.com">www.mymotherlode.com</a>	<a href="http://www.sierranewsonline.com">www.sierranewsonline.com</a>
<b>Contact Name:</b>	BJ Hansen, News Director	
<b>Contact Address:</b>	342 S. Washington Sonora, CA 95370	P. O. Box 333 North Fork, CA 93643
<b>Contact Phone:</b>	(209) 533-1450	(559) 877-3333
<b>Contact Email or Webform:</b>	<a href="http://www.kvml.com/contact">http://www.kvml.com/contact</a>	<a href="mailto:news@sierranewsonline.com">news@sierranewsonline.com</a>

### Newspapers

	Mariposa Gazette	Merced County Times
<b>Title:</b>	Mariposa Gazette and Miner	Merced County Times
<b>Link:</b>	<a href="http://www.mariposagazette.com">www.mariposagazette.com</a>	<a href="http://www.mercedcountytimes.com">www.mercedcountytimes.com</a>
<b>Contact Name:</b>	Greg Little, Editor	
<b>Contact Address:</b>	5108 Highway 140 Suite B P.O. Box 38 Mariposa, CA 95338	2221 K Street, Merced CA, 95340
<b>Contact Phone:</b>	(209) 966-2500	209-358-5311
<b>Contact Email or Webform:</b>	<a href="mailto:greg@mariposagazette.com">greg@mariposagazette.com</a>	<a href="https://mercedcountytimes.com/contact-us/">https://mercedcountytimes.com/contact-us/</a>

	Sonora Union Democrat	Fresno Bee
<b>Title:</b>	Sonora Union Democrat	Fresno Bee
<b>Link:</b>	<a href="http://www.uniondemocrat.com">www.uniondemocrat.com</a>	<a href="http://www.fresnobee.com">www.fresnobee.com</a>
<b>Contact Name:</b>	Alex MacLean, Editor	Joe Kieta, Editor
<b>Contact Address:</b>	84 S. Washington St. Sonora, CA 95370	710 VanNess Avenue, #293 Fresno, CA 93721
<b>Contact Phone:</b>	(209) 532-7151	(559) 441-6307
<b>Contact Email or Webform:</b>	<a href="mailto:editor@uniondemocrat.com">editor@uniondemocrat.com</a>	<a href="mailto:jkieta@fresnobee.com">jkieta@fresnobee.com</a>



### Radio Stations

	Capital Public Radio	KVML
<b>Title:</b>	National Public Radio – Capital Public Radio 91.3 FM Stockton/Modesto	KVML News Talk AM 1450 / FM 102.7
<b>Link:</b>	<a href="http://www.capradio.org">www.capradio.org</a>	<a href="http://www.kvml.com">www.kvml.com</a>
<b>Contact Name:</b>		KVML News Line
<b>Contact Address:</b>	7055 Folsom Boulevard Sacramento, CA 95826-2625	342 S. Washington St. Sonora, CA 95370
<b>Contact Phone:</b>	916-278-8900	(209) 532-6397
<b>Contact Email or Webform:</b>	<a href="https://www.capradio.org/about/contact/contact-form-info">https://www.capradio.org/about/contact/contact-form-info</a>	<a href="http://www.kvml.com/contact">http://www.kvml.com/contact</a>

### Television Stations

	ABC 30	KCRA
<b>Title:</b>	ABC 30 News – Fresno and the Central Valley	KCRA 3 NBC News – Sacramento, Stockton, and Modesto
<b>Link:</b>	<a href="http://www.abc30.com">www.abc30.com</a>	<a href="http://www.kcra.com">www.kcra.com</a>
<b>Contact Name:</b>		
<b>Contact Address:</b>	1777 G Street Fresno CA 93706	3 Television Circle Sacramento, CA 95814-0794
<b>Contact Phone:</b>	(559) 442-1170	916-444-7316
<b>Contact Email or Webform:</b>	<a href="https://abcotv.formstack.com/forms/contact_the_news_director">https://abcotv.formstack.com/forms/contact_the_news_director</a>	<a href="mailto:news@kcra.com">news@kcra.com</a>





## APPENDIX F: NCP COMMUNITY INVOLVEMENT REQUIREMENTS

The NCP specifies the following community involvement requirements for the non-time-critical removal action at this Site:

### Removal Actions

#### Non-Time-Critical Removal Action

Required When	Requirement	Citation– 40 C.F.R.
	Designate a Site spokesperson.	§ 300.415(n)(1)
No later than when the Engineering Evaluation and Cost Analysis Approval Memorandum is signed	Establish two information repositories (one at a central location and one at or near the Site), and establish an administrative record file and place in the information repositories.	§ 300.415(n)(4)(i); § 300.800(a); § 300.805(a)
	Publish notice of availability of the information repositories and the administrative record file in a major local newspaper of general circulation.	§ 300.415(n)(4)(i); § 300.820(a)(1)
Prior to completion of the Engineering Evaluation and Cost Analysis	Conduct community interviews.	§ 300.415(n)(4)(i)
	Prepare and issue a Community Involvement Plan.	§ 300.415(n)(4)(i)
Upon completion of Engineering Evaluation and Cost Analysis and publication of the Engineering Evaluation and Cost Analysis Report	Publish notice of availability and brief description of the Engineering Evaluation and Cost Analysis Report in a major local newspaper of general circulation.	§ 300.415(n)(4)(ii); § 300.820(a)(1)
	Provide a public comment period of at least 30 days for submission of written and oral comments. Upon timely request during the public comment period, extend the public comment period by a minimum of 15 additional days.	§ 300.415(n)(4)(iii); § 300.820(a)(2)
	After the close of the public comment period, prepare a written response to significant comments received during the public comment period; consider and respond to significant comments submitted before the public comment period, as appropriate; place any such responses into the administrative record file.	§ 300.415(n)(4)(iv); § 300.820(a)(2)