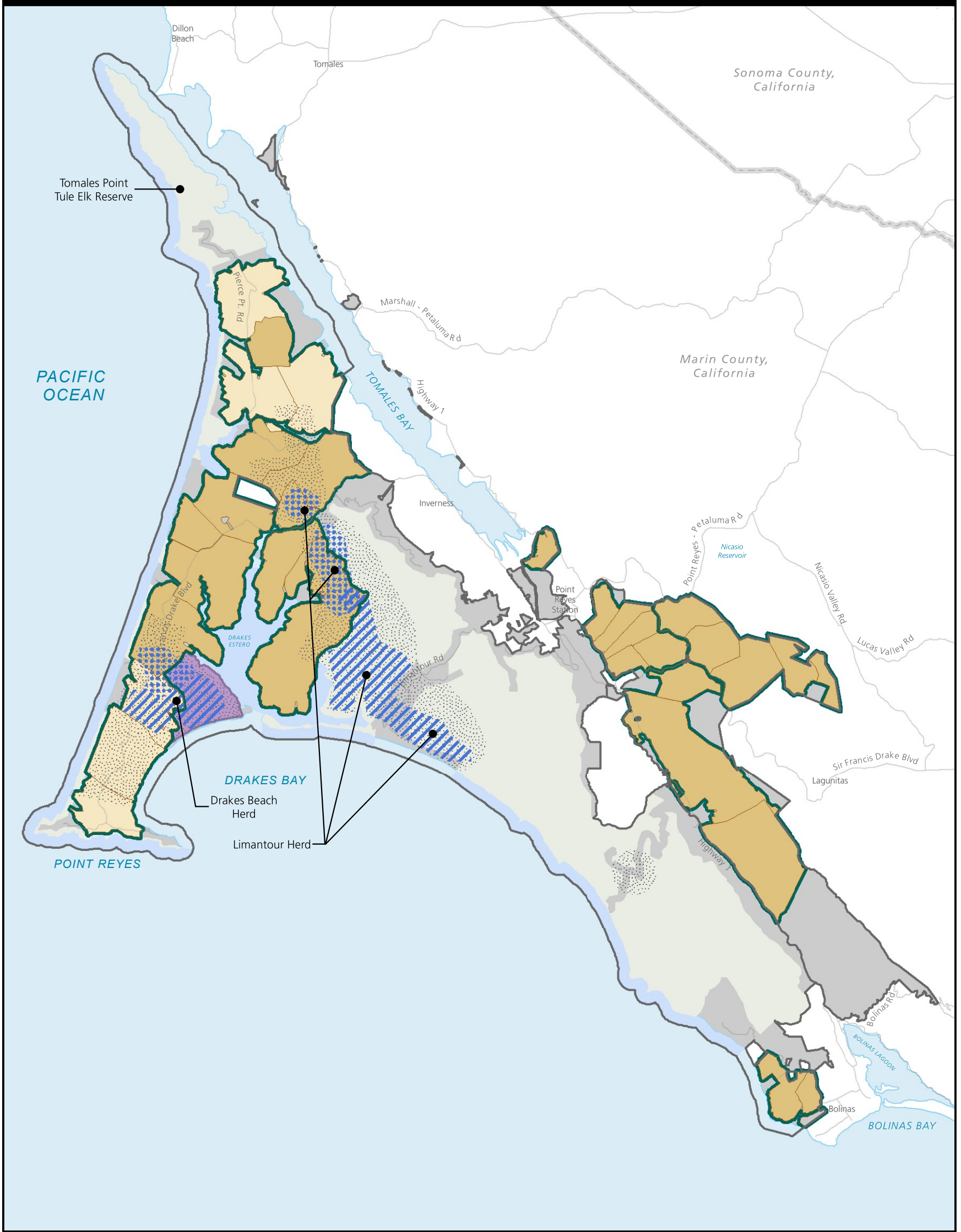


# Point Reyes National Seashore

General Management Plan Amendment  
Environmental Impact Statement

National Park Service  
U.S. Department of the Interior

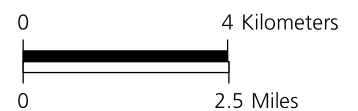


## Legend

- |                                     |                          |                                                             |
|-------------------------------------|--------------------------|-------------------------------------------------------------|
| — Point Reyes Administered Land     | ▭ Ranchland Zone         | ▨ Elk Cow Group Regular Use                                 |
| ▭ NPS Lands Outside Planning Area   | ▭ Scenic Landscape Zone  | ▨ Elk Bull Group Regular Use                                |
| ▭ Phillip Burton Wilderness (Land)  | ▭ Beef Cattle Operations | ▨ Elk Seasonal or Transitory Use (groups of 12 elk or less) |
| ▭ Phillip Burton Wilderness (Water) | ▭ Dairy Operations       |                                                             |
| — Major Road                        |                          |                                                             |
| — County Boundary                   |                          |                                                             |



Sources:  
NPS 2016-2020

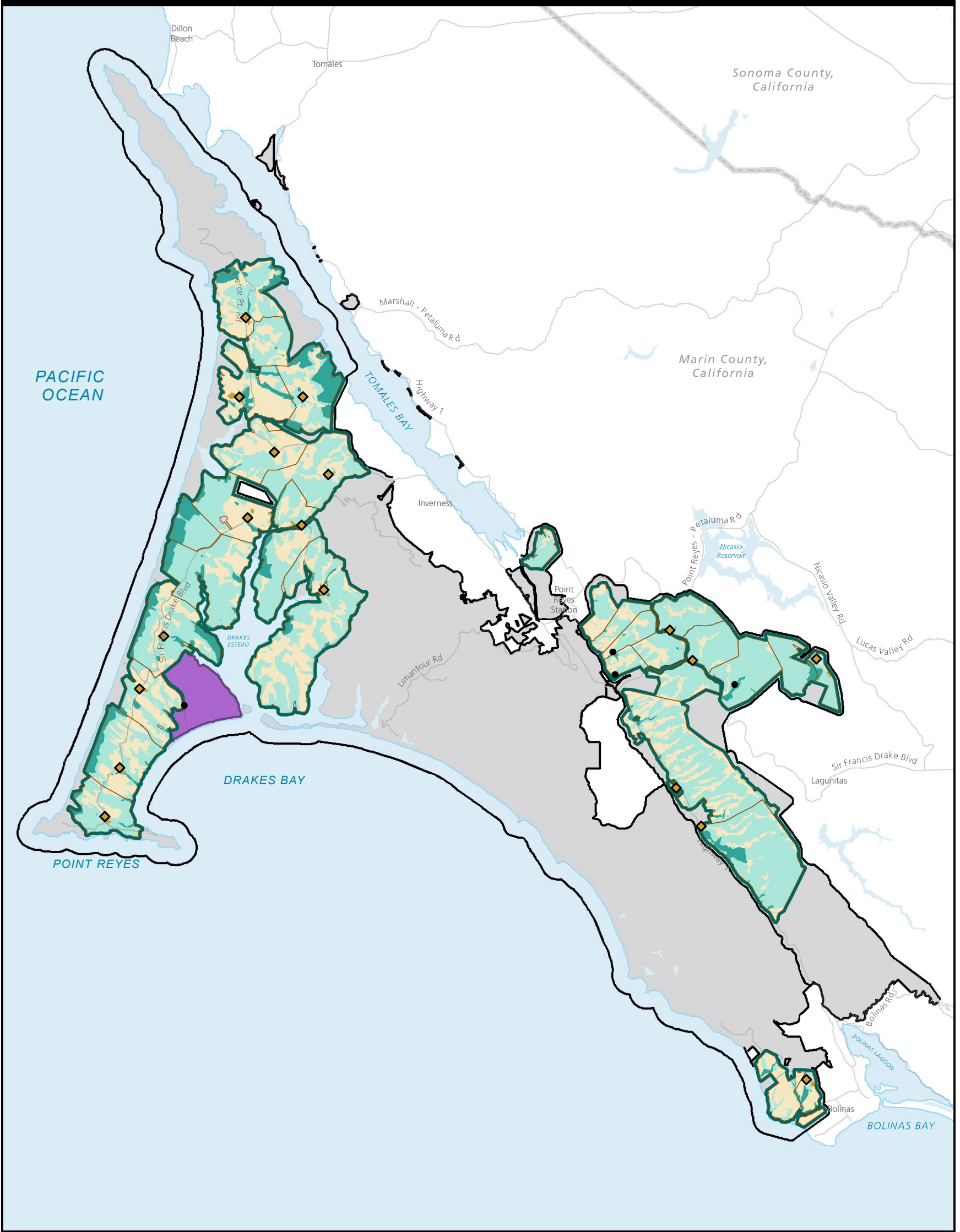


**FIGURE R-1: TULE ELK RANGE IN POINT REYES**

# Point Reyes National Seashore

General Management Plan Amendment  
Environmental Impact Statement

National Park Service  
U.S. Department of the Interior

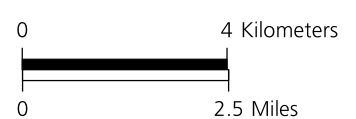


## Legend

- |                                 |                             |
|---------------------------------|-----------------------------|
| Ranch Boundary                  | Ranchland Zone              |
| Point Reyes Administered Land   | Ranch Core Subzone          |
| Major Road                      | Pasture Subzone             |
| County Boundary                 | Range Subzone               |
| NPS Lands Outside Planning Area | Resource Protection Subzone |
| Unoccupied Complex              | Scenic Landscape Zone       |



Sources:  
NPS 2016-2019, ESRI 2017

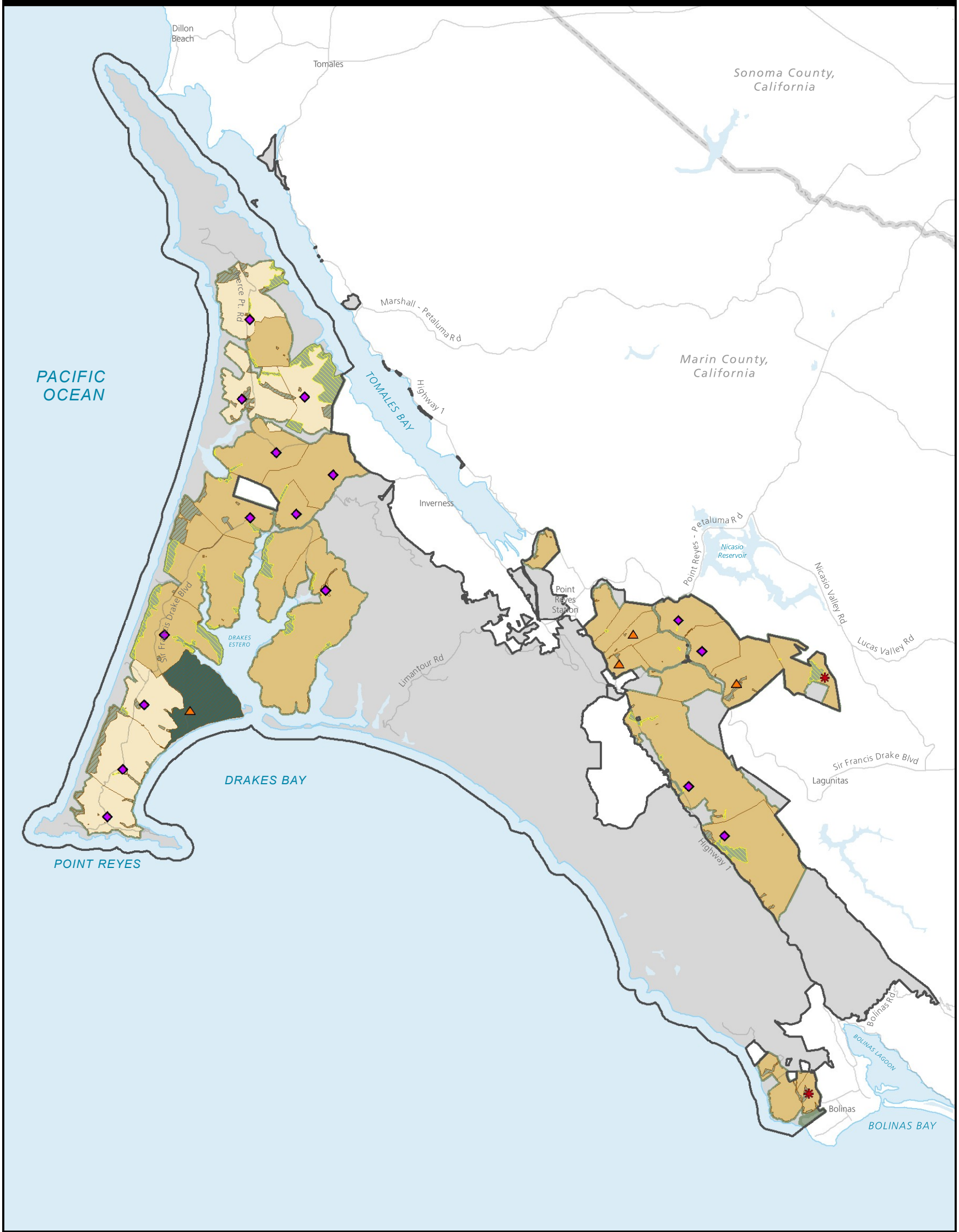


**FIGURE R-2: MODIFIED ALTERNATIVE B ZONING MAP**

# Point Reyes National Seashore

General Management Plan Amendment  
Environmental Impact Statement

National Park Service  
U.S. Department of the Interior

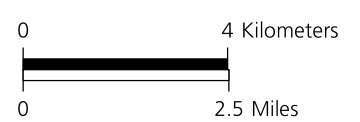


## Legend

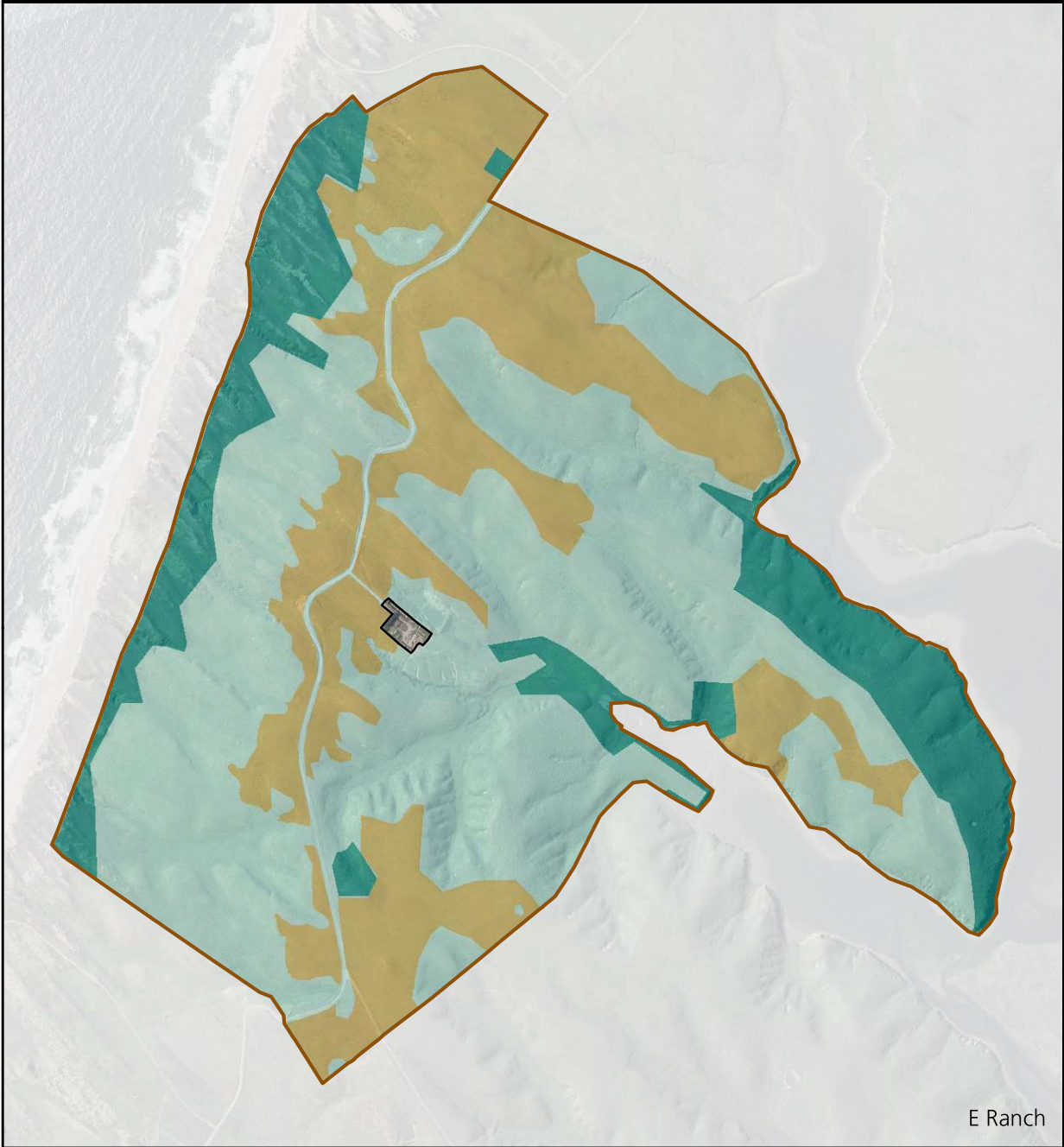
- |                                 |                                       |
|---------------------------------|---------------------------------------|
| Point Reyes Administered Land   | No Current Authorized Residential Use |
| GMP Amendment Planning Area     | Current Residential Use Authorized    |
| NPS Lands Outside Planning Area | Reserved Life Estate                  |
| County Boundary                 | Beef Cattle Operations                |
| Major Road                      | Dairy Operations                      |
|                                 | Existing Resource Protection Buffer   |
|                                 | Proposed Resource Protection Buffer   |
|                                 | Lands Not Under Lease/Permit          |



Sources:  
NPS 2016-2019, ESRI 2017



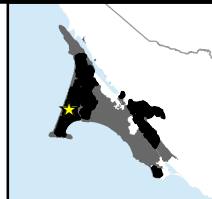
**FIGURE R-3: MODIFIED ALTERNATIVE B**



E Ranch

**Legend**

- Developed Complex
- Pasture Subzone
- Range Subzone
- Resource Protection Subzone
- Ranch Boundary



North

Sources:  
NPS 2016-2019  
NAIP Imagery 2020

0 0.3 Kilometers  
0 0.25 Miles

**FIGURE R-4: E RANCH ZONING MAP**

# Point Reyes National Seashore

General Management Plan Amendment  
Environmental Impact Statement

National Park Service  
U.S. Department of the Interior

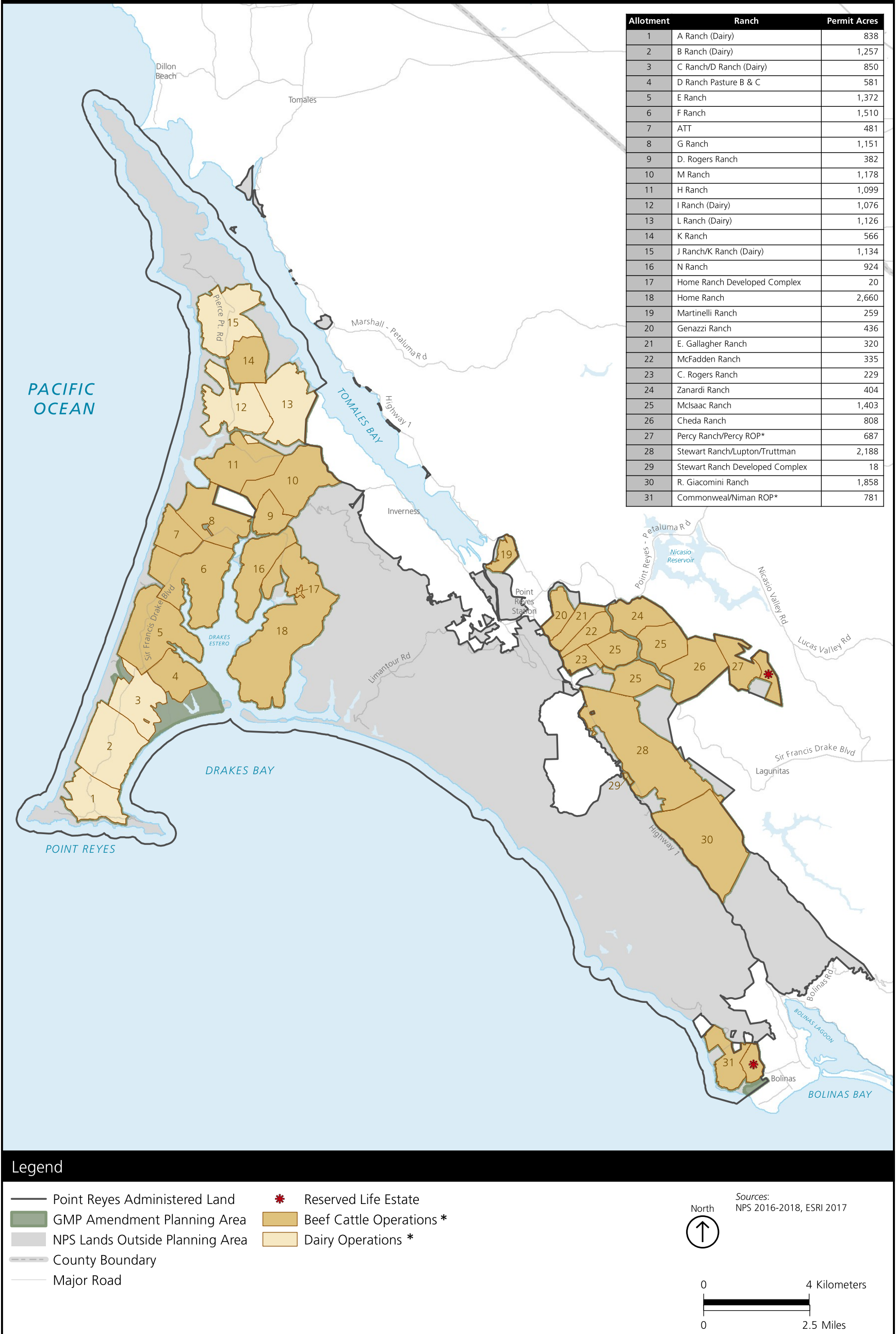


FIGURE R-5: RANCH KEY MAP

\*Reflects existing use